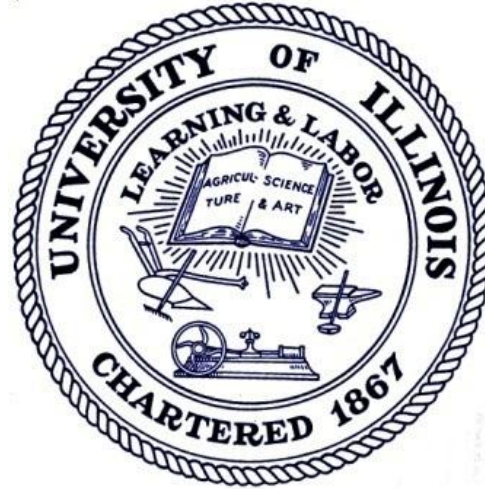


DASHBOARD INDICATORS



UNIVERSITY OF ILLINOIS

URBANA-CHAMPAIGN • CHICAGO • SPRINGFIELD

Update Presentation to
BOARD OF TRUSTEES
December 2, 2011

Dashboards

Visual display of key metrics to summarize performance in implementing strategic priorities and fulfilling mission.

Project Timeline

- Concept Presentation BOT June 2011
- Update BOT December 2011
- Review and Discussion BOT January 2012
- Update BOT July 2012

Three Campus Dashboards

University of Illinois at Urbana-Champaign

Dashboard Indicators

PREPARED BY:

UNIVERSITY OFFICE FOR PLANNING AND BUDGETING
NOVEMBER 14, 2011

University of Illinois at Chicago

Dashboard Indicators

PREPARED BY:

UNIVERSITY OFFICE FOR PLANNING AND BUDGETING
NOVEMBER 14, 2011

University of Illinois at Springfield

Dashboard Indicators

PREPARED BY:

UNIVERSITY OFFICE FOR PLANNING AND BUDGETING
NOVEMBER 14, 2011

Strategic Priorities

- Student Access and Enrollment
- Student Outcomes
- Tuition and Financial Aid
- Faculty and Scholarship
- Research Performance
- Financial Indicators
- Hospital and Clinical Practice

Diversity

Metrics

- Student Access and Enrollment
 - Fall Term Enrollment by Level
 - First-Time Freshmen Enrollment
 - % First-Time Freshmen Applicants Admitted
 - % First-Time Freshmen Admissions Yield
 - % Enrolled Students from Underrepresented Groups
 - ACT Composite Scores 25th and 75th Percentile
 - ACT English, Math Scores 25th and 75th Percentile
 - Number of Enrolled First-Time Transfers
 - % Enrolled Transfers from Underrepresented Groups
- Student Outcomes
 - Freshmen to Sophomore One-Year Retention Rates
 - First-Time Freshmen Four-Year Graduation Rates
 - % First-Time Freshmen from Underrepresented Groups Four-Year Graduation Rates
 - First-Time Freshmen Six-Year Graduation Rates
 - % First-Time Freshmen from Underrepresented Groups Six-Year Graduation Rates
 - Number of Degrees Granted in STEM Fields
 - Number of Health Related Degrees Granted
 - Number of Degrees Granted
 - % Degrees Granted to Students from Underrepresented Groups
 - Graduate Education
- Tuition and Financial Aid
 - Undergraduate In-State Tuition and Fees
 - % Undergraduates Receiving Need or Merit Aid
 - % Undergraduates Receiving Pell Grants
 - % Undergraduates Awarded Aid Where Need Fully Met
 - % Need Met for Undergraduates Awarded Need-Based Aid
 - Average Per-Undergraduate-Borrower Cumulative Principal Borrowed
 - % Full-Time Undergraduates Paying Less than \$3,000 Per Semester
- Faculty and Scholarship
 - Number of Tenure System Faculty
 - % Tenure System Faculty from Underrepresented Groups
 - National Academy Memberships
 - Student to Faculty Ratios
 - % Undergraduate Class Sections With Less Than 20 Students
 - % Undergraduate Class Sections With More Than 50 Students
 - Faculty Salary Difference from Peer Median
- Research Performance
 - Science and Engineering R&D Expenditures
 - Total Federal Research Funding
 - Health and Human Services Funded Research
 - National Science Foundation Funded Research
 - Patents Received
 - Licensing Revenues
 - New Start-up Companies Formed
- Financial Indicators
 - State Appropriations per FTE Enrollment
 - Instructional Expenses per FTE Enrollment
 - Gift Income - Total Gifts
 - Annual Giving Rate
 - Endowment Assets per FTE Enrollment
- Hospital and Clinical Practice
 - Average Daily Hospital Census
 - Total Hospital and Health Science System Covered Lives
 - Patients Rating of Hospital Services

Dashboard Facilitates Peer Comparisons

A group of peer institutions selected for each campus based on similarities in mission, profile and reputation.

Peer Groups: Urbana-Champaign

University of California - Berkeley

University of California - Los Angeles

University of California - San Diego

University of Michigan - Ann Arbor

University of North Carolina - Chapel Hill

University of Texas - Austin

University of Washington

University of Wisconsin - Madison

University of Virginia

Peer Groups: Chicago

Florida State University
Indiana University/Purdue University
at Indianapolis (IUPUI)
Stony Brook University
Temple University
University at Buffalo
University of Alabama at Birmingham
University of Arizona at Tucson
University of California - Irvine
University of Cincinnati
University of Colorado Denver*
University of Louisville

University of Minnesota - Twin Cities
University of Missouri - Kansas City
University of New Mexico - Albuquerque
University of Pittsburgh*
University of South Florida -Tampa
University of Toledo
Virginia Commonwealth University
Wayne State University

* State Related Research Institution

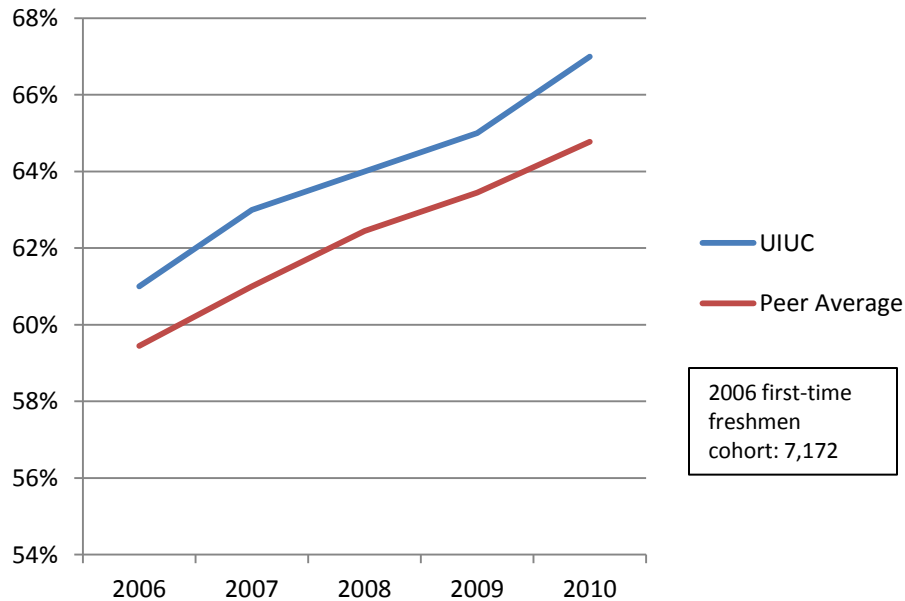
Peer Groups: Springfield

Auburn University - Montgomery
Clark University*
College of Charleston
Georgia College and State University
Iona College*
Lake Superior State University
Marist College*
Northern Michigan University
Shippensburg University of Pennsylvania
The College at Brockport
Trinity University (San Antonio, TX)*
Union College (Schenectady, NY)*
University of South Dakota
University of Wisconsin - Green Bay

* Private Institution

First-Time Freshmen Four-Year Graduation Rates Fall 2006 – Fall 2010

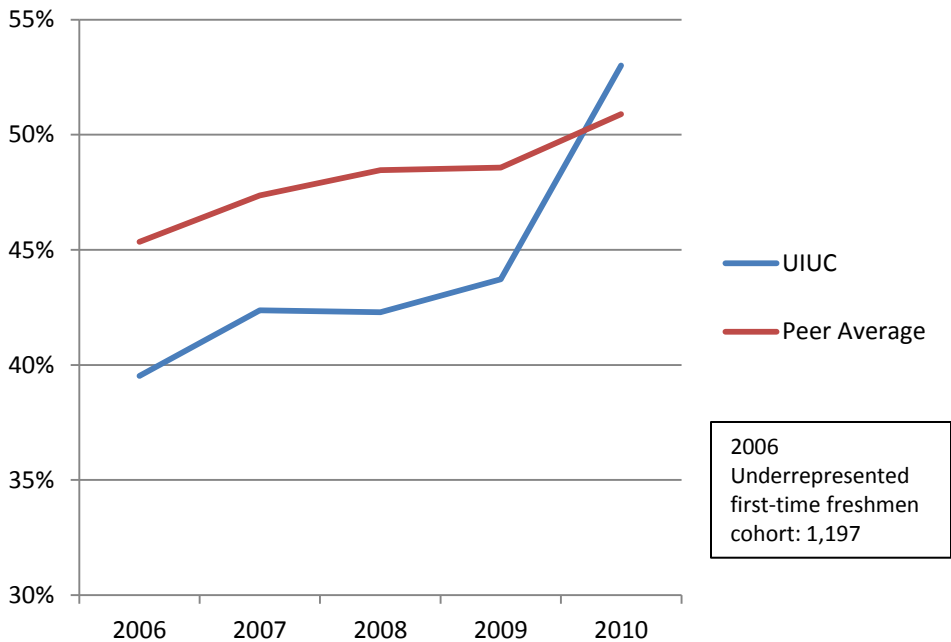
University of Illinois at Urbana-Champaign



Compared to its peer average, the University of Illinois at Urbana-Champaign graduates a higher percent of students within four years.

Percent First-Time Freshmen from Underrepresented* Groups Four-Year Graduation Rates Fall 2006 – Fall 2010

University of Illinois at Urbana-Champaign



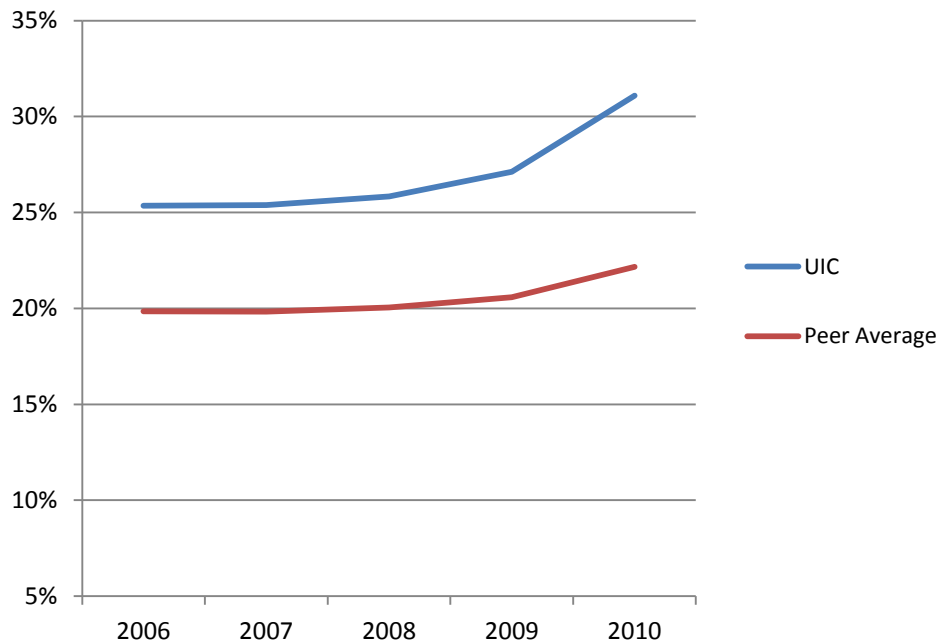
In 2010 the University of Illinois at Urbana-Champaign graduated a higher percent of students from underrepresented groups within four years compared to its peer average.

* Includes Black, Hispanic, American Indian, Native Hawaiian/Other Pacific Islander, and multi-racial students.

Dashboard Allows Focus on Key Priorities

Percent Enrolled Undergraduate Students from Underrepresented* Groups Fall 2006 – Fall 2010

University of Illinois at Chicago

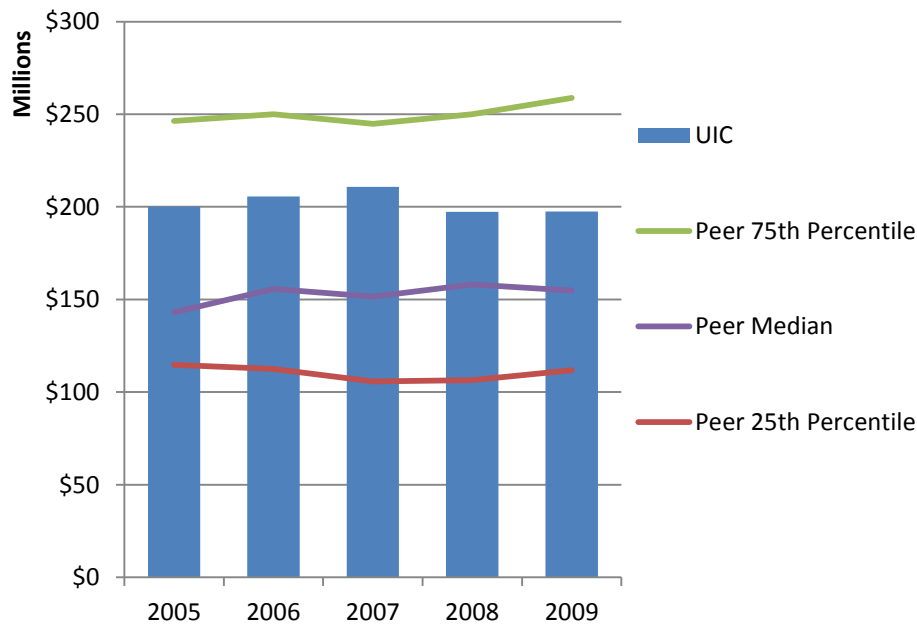


The percent of undergraduate students from underrepresented groups at the University of Illinois at Chicago is higher than the peer average.

* Includes Black, Hispanic, American Indian, Native Hawaiian/Other Pacific Islander, and multi-racial students.

Total Federal Research Funding* FY 2005 - FY 2009

University of Illinois at Chicago



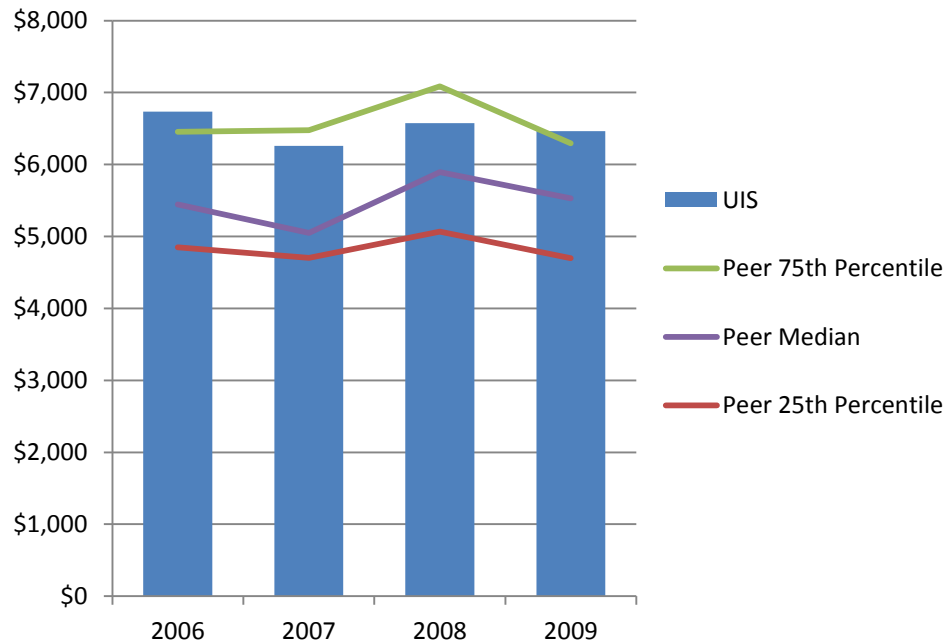
Total federal research funding at the University of Illinois at Chicago is higher than its peer median.

* As reported to the NSF Survey of Research and Development Expenditures.

Dashboard Supports Decision Making

State Appropriations per FTE Enrollment FY 2006 - FY 2009

University of Illinois at Springfield



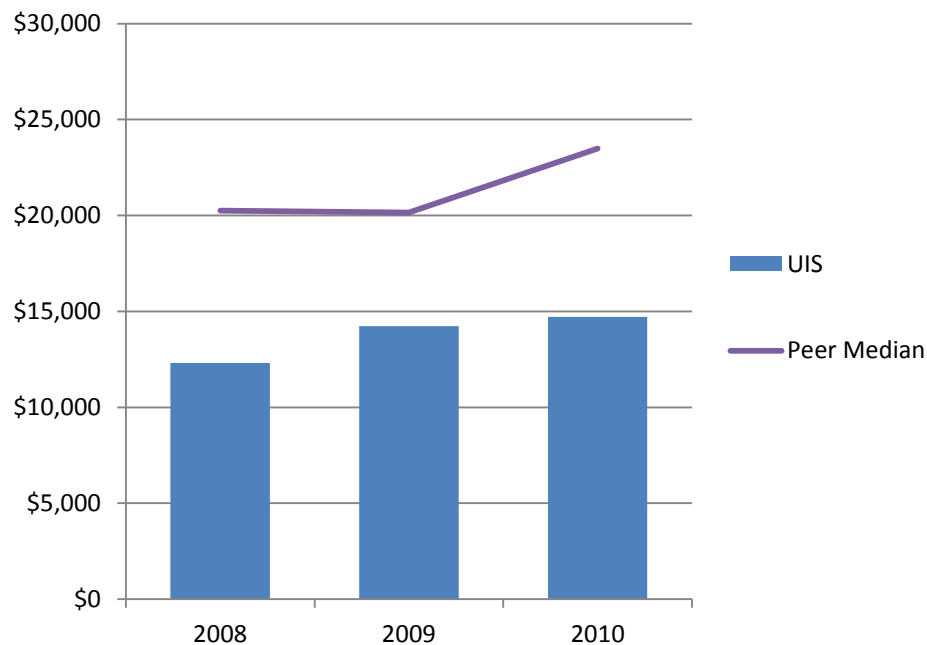
University of Illinois at Springfield receives more state support per student than the median amount for its public university peers.

Note: Does not include any allocation of University Administration expenses.

Average Per Undergraduate-Borrower Cumulative Principal Borrowed AY 2008 - AY 2010

(excludes any aid awarded in excess of need as well as any that were awarded to replace EFC: PLUS, unsubsidized and private alternative loans)

University of Illinois at Springfield



University of Illinois at Springfield students borrow less on average than students at peer institutions.

Note: Excludes Clark University, College of Charleston, Georgia College and State University, Iona College, Lake Superior State University, Marist College, Union College, Trinity College, and University of South Dakota due to lack of available data.

A Comprehensive Picture

- Tuition
- State Appropriation
- Financial Aid/Grants
- Actual Payments
- Student Borrowing

Dashboard Highlights Trends

Examples

- Number of tenure system faculty
- Student to faculty ratios
- Percent freshmen applicants admitted
- Freshman applicant yield
- Graduation rates
- Degrees granted in STEM disciplines
- Instructional expenses per FTE
- New start-up companies formed
- Average daily hospital census

Next Steps

Review and Discussion

January BOT



**Goal Setting &
Resource Allocation**

Unit Level Dashboards