

University of Illinois at Springfield

College of Liberal Arts & Sciences



UNIVERSITY OF ILLINOIS
URBANA-CHAMPAIGN • CHICAGO • SPRINGFIELD

College Overview - Mission

- The mission of the College of Liberal Arts and Sciences (CLAS) at UIS is to prepare students for the future by providing a broad education for success. We teach students how to participate effectively in an interdependent, diverse, and rapidly changing world, offering education in a transformative environment that stimulates engagement with ideas, each other, and the globe.



College Overview – Educational Objectives

- Intellectually and technologically sophisticated thinkers
- Aesthetically aware citizens
- Socially responsible contributors to life in the 21st century



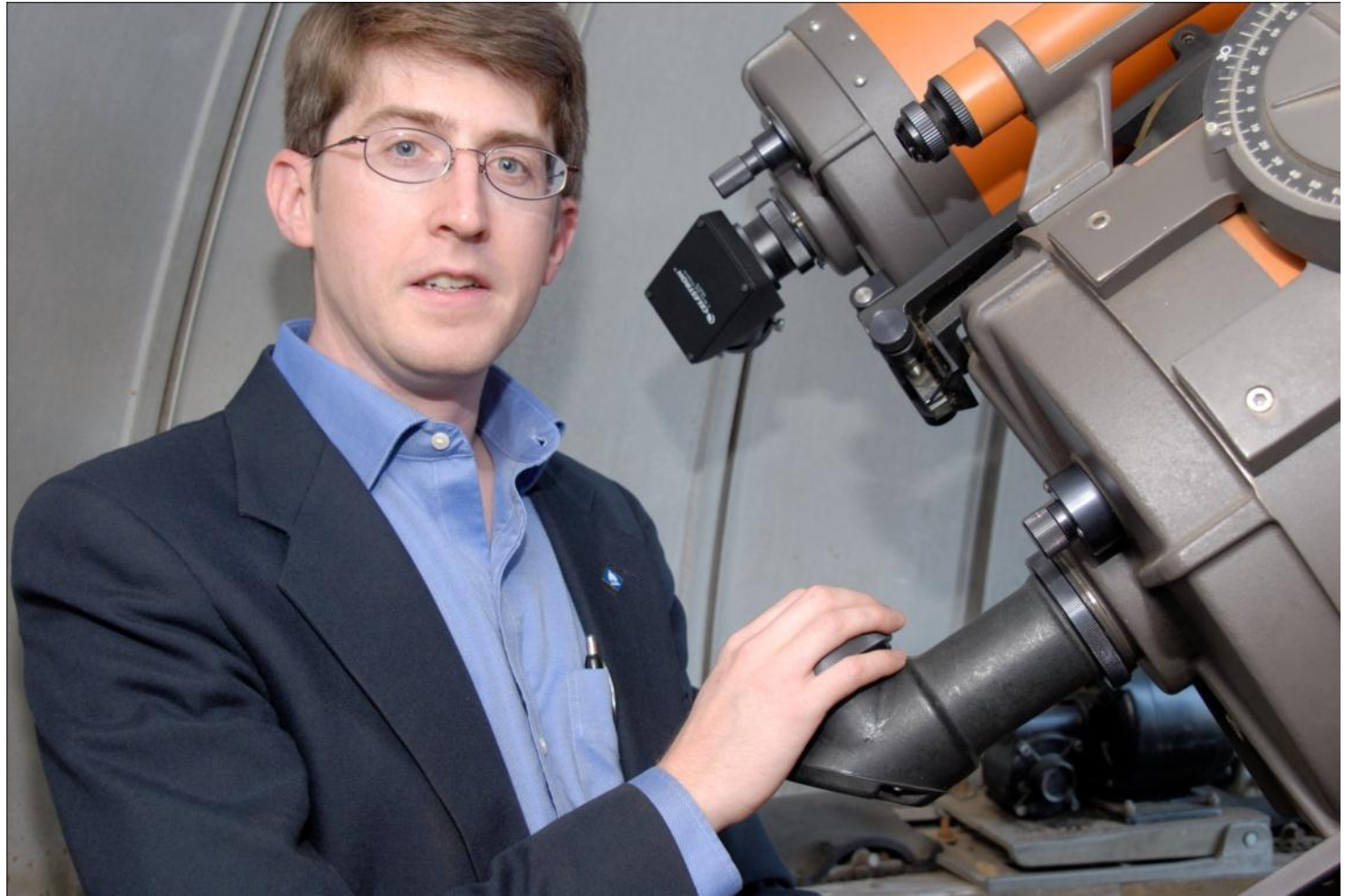
College Overview – Degree Programs

- Biology
- Chemistry
- Clinical Laboratory Science
- Communication
- Computer Science
- English
- History
- Liberal & Integrative Studies
- Math
- Philosophy
- Psychology
- Sociology/Anthropology
- Visual Arts



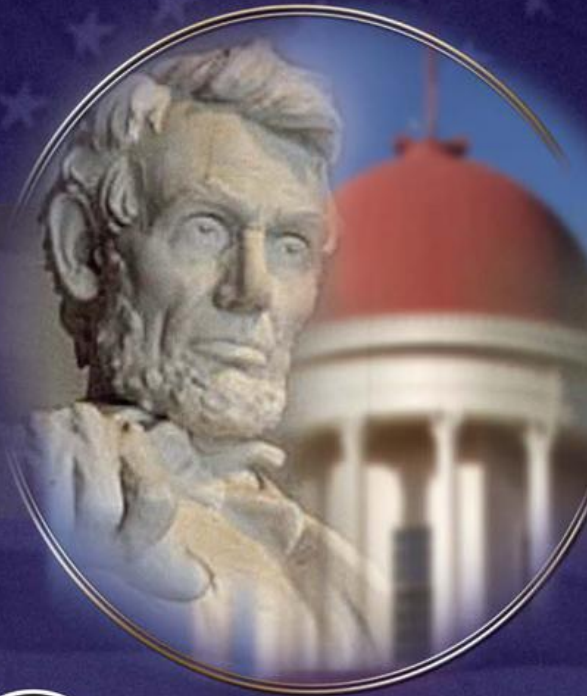
College Overview – CLAS Points of Pride







2010 LINCOLN LEGACY LECTURE SERIES • *University of Illinois Springfield*



Lincoln & Race

October 7, 2010 • 7 p.m.

Presented by the Center for State Policy and Leadership

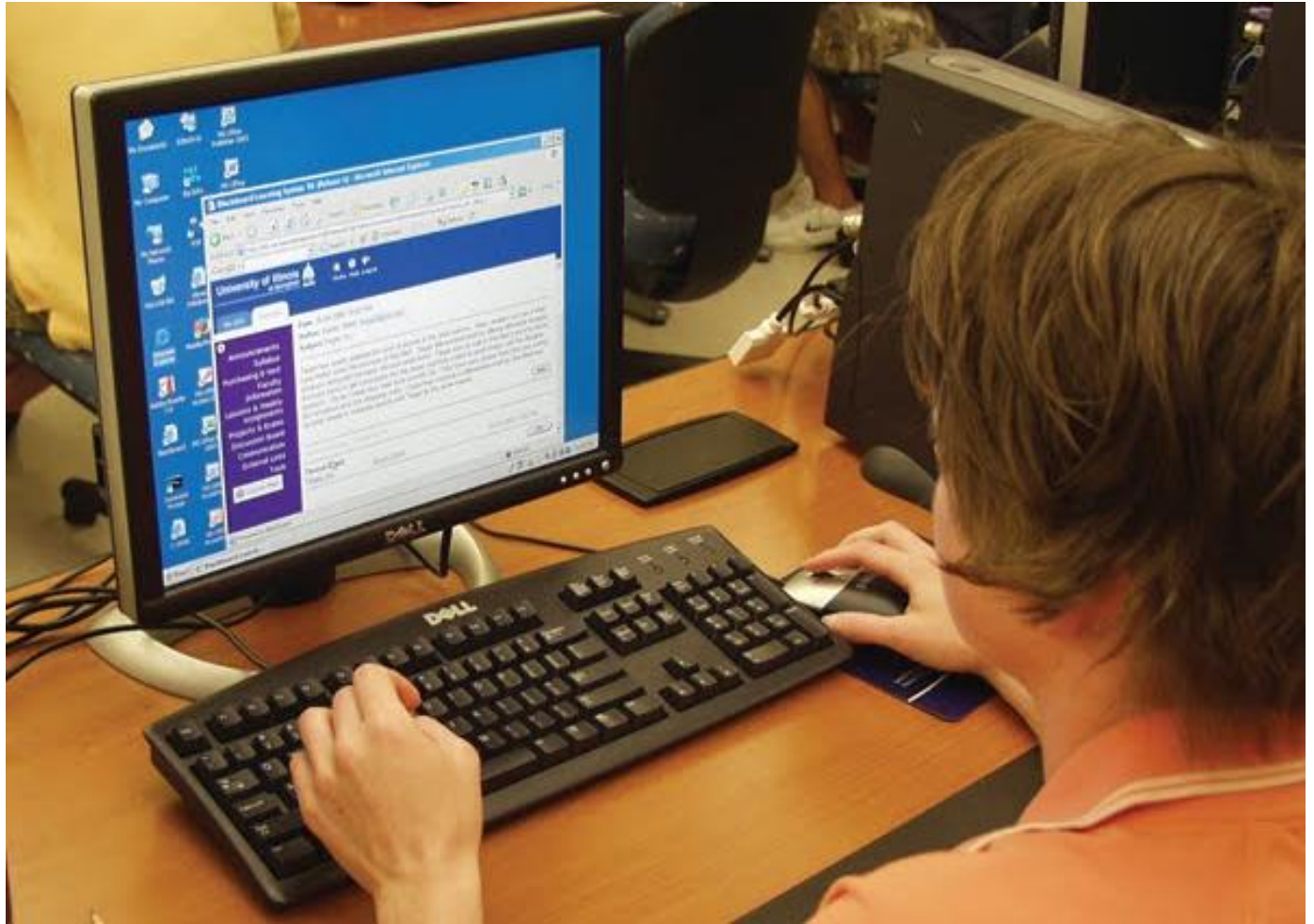


40 Years
UNIVERSITY OF ILLINOIS
SPRINGFIELD
1970 2010











Student Diversity



Total Student Headcount

Fall 2011

	<i>Head Count</i>	<i>Percent of Total Campus</i>
All Majors	2,172	42.3%
CLAS Undergraduate Majors	1,711	55.0%
CLAS Graduate Majors	461	22.8%



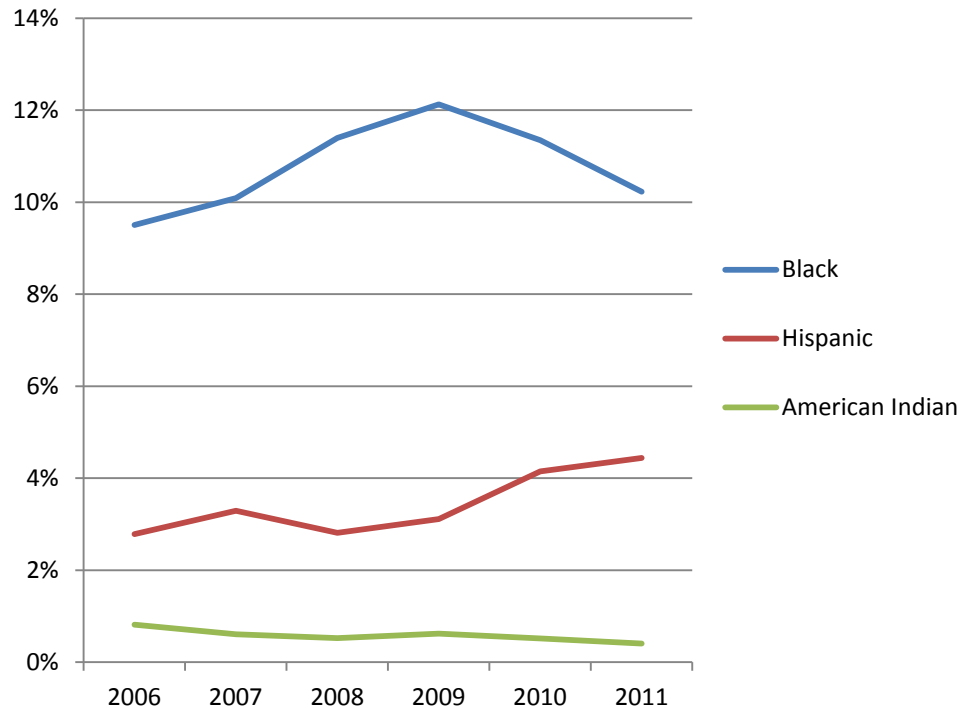
Gender

Fall 2011

	<i>Male</i>	<i>Female</i>
All Majors	1,118 (51%)	1,054 (49%)
CLAS Undergraduate Majors	812 (47%)	899 (53%)
CLAS Graduate Majors	306 (66%)	155 (34%)



Percent of Undergraduate Majors from Underrepresented Groups Fall 2006 – Fall 2011



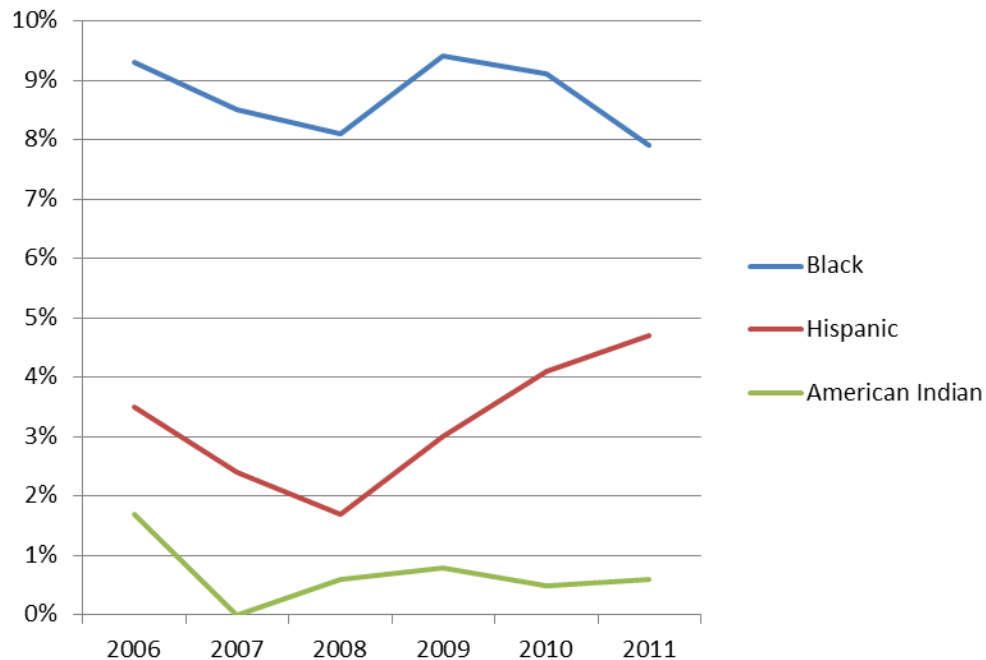
The percentage of undergraduate majors from underrepresented groups increased from 13.1% in Fall 2006 to 17.5% in Fall 2011.



* Includes Black, American-Indian/Alaskan Native, Hispanic, and Multi-race students.

Percent of New First Time Transfers from Underrepresented Groups

Fall 2006 – Fall 2011

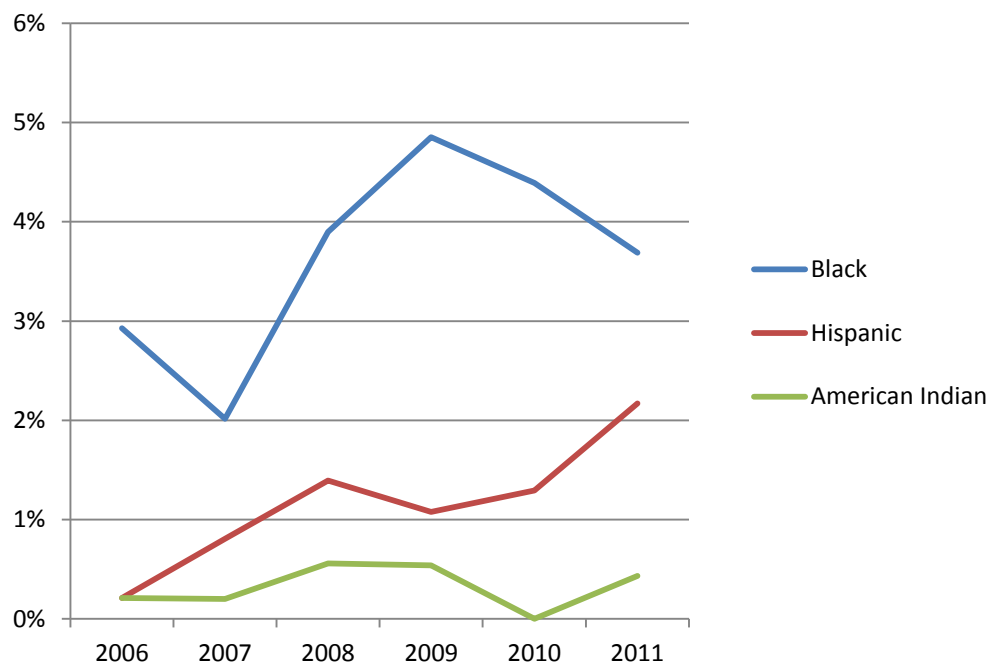


Between 10% and 15% of new first time transfers in the College of Liberal Arts & Sciences are from underrepresented groups.



* Includes Black, American-Indian/Alaskan Native, Hispanic, and Multi-race students.

Percent of Graduate Majors from Underrepresented Groups Fall 2006 – Fall 2011



The percentage of CLAS master's level students from underrepresented groups increased from 3.3% in Fall 2006, to 5.8% in fall 2008, to 6.9% in fall 2011.



* Includes Black, American-Indian/Alaskan Native, Hispanic, and Multi-race students.

* Despite the appearance of fluctuations in the enrollment of Black master's level students within the College, the number of students ranges from a low of 10 in 2007 to a high of 18 in 2009. The fluctuations are more driven by a change in total headcount (high of 498 in 2007 and a low of 359 in 2008).

Financial Aid to Students

- The percentage of undergraduate students from CLAS receiving financial aid for the 2010-2011 (FY11) academic year is approximately **74%**.
- Over the past nine years **47** CLAS students have received the PAP Scholarship.



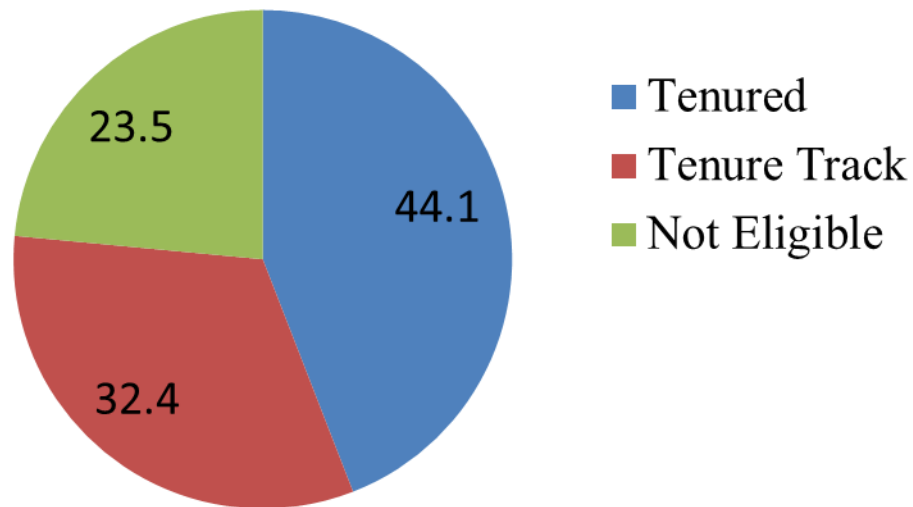
CLAS Faculty



Tenure Status of Full Time Faculty Members

Fall 2011

Tenure Status (HC: 102)

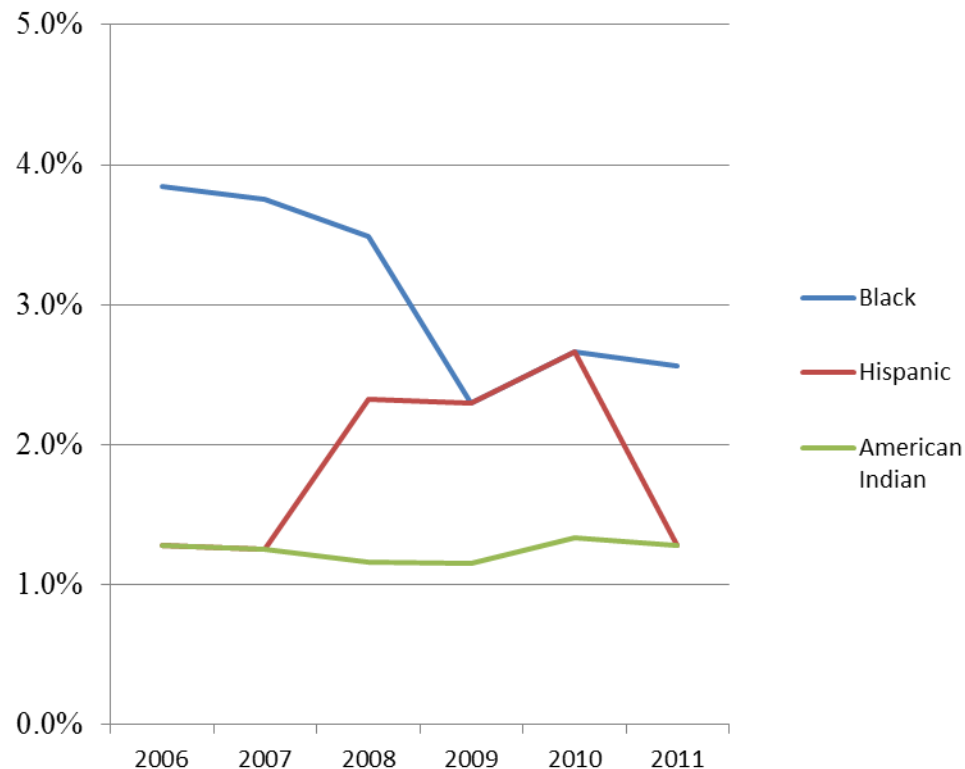


Median Age of Full-time Faculty Members, by Tenure Status Fall 2011

<u>All Faculty</u>	<u>45 years old</u>
– Tenured:	49 years old
– Tenure-Track:	38 years old
– Other (not eligible):	40 years old



Percentage of Tenured/Tenure-Track Faculty from Underrepresented Groups Fall 2006 – Fall 2011



Since fall 2006, the percentage of tenured/tenure track faculty from underrepresented groups* has ranged from a low of 5.1% (fall 2011), to a high of 7.0% in fall 2008. In terms of headcount, the College currently has four tenured/tenure-track faculty from underrepresented groups.



* Includes Black, American-Indian/Alaskan Native, Hispanic, and Multi-race faculty.

Program Review & Resource Allocation

- IBHE-mandated program review
- Instructional Resource Metrics
- Reallocation of vacated positions



Instructional Resource Metrics

- Metric 1: Utilization
- Metric 2: Seatcount per Faculty FTE
- Metric 3: Tuition Revenue for each Dollar of Faculty Salary
- Metric 4: Credit Hours per Faculty FTE



CLAS Strategic Directions

- Internationalization
- Student-faculty research
- Pre-professional programs
- Visual and performing arts



University of Illinois at Springfield
College of Liberal Arts & Sciences



UNIVERSITY OF ILLINOIS
URBANA-CHAMPAIGN • CHICAGO • SPRINGFIELD