

University of Illinois at Chicago



Dashboard Indicators

**TUITION AND FEES AND FINANCIAL AID UPDATES BY:
UNIVERSITY OFFICE FOR PLANNING AND BUDGETING
DECEMBER 6, 2016**

**PRESENTED BY:
CHANCELLOR MICHAEL D. AMIRIDIS
JANUARY 19, 2017**

Reported to the Board of Trustees
January 19, 2017

PEER GROUPS

Peer Group

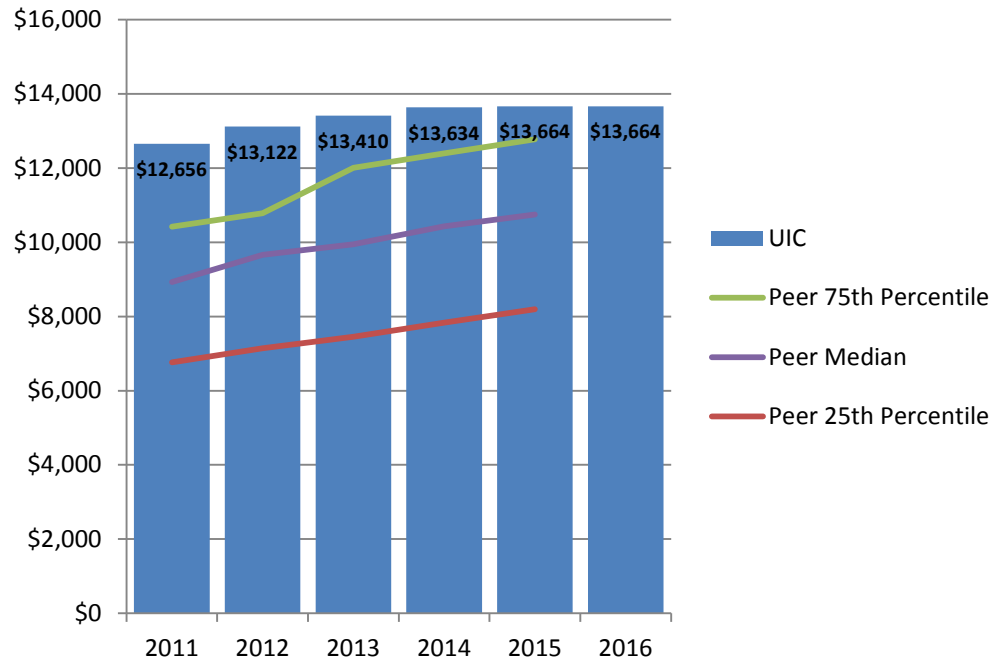
SUNY, University at Buffalo
University of Alabama at Birmingham
University of Cincinnati
University of Connecticut
University of Louisville
University of South Florida - Tampa
University of Utah
Virginia Commonwealth University

TUITION AND FINANCIAL AID



FULL-TIME, FIRST-TIME UNDERGRADUATE IN-STATE TUITION AND FEES PER ACADEMIC YEAR, 2011 – 2016

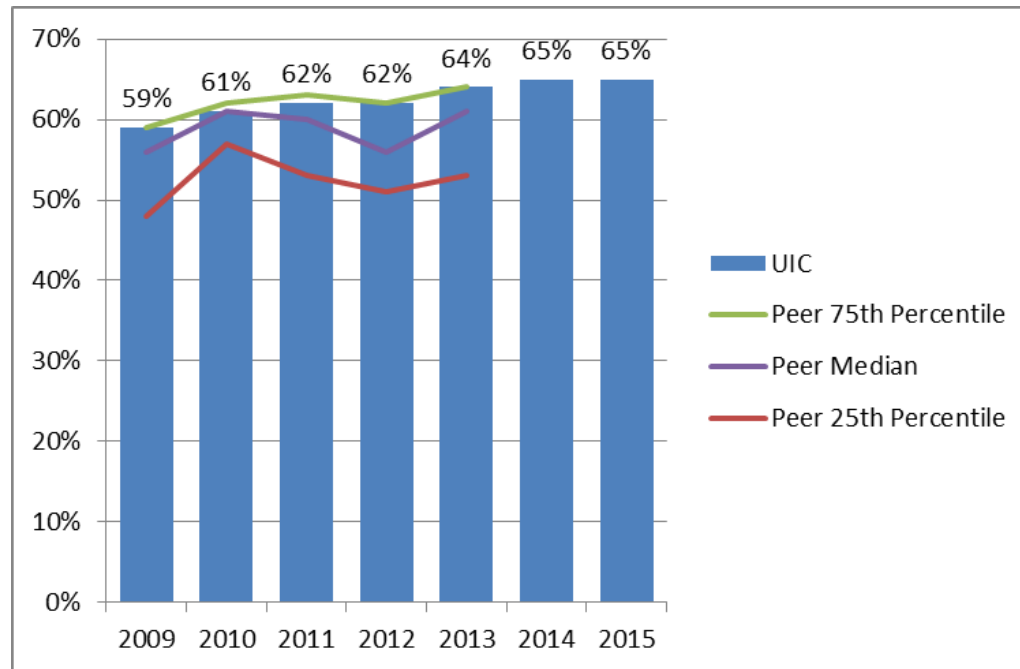
Full-time, first-time undergraduate tuition and fees at UIC are 2nd highest among its peer group.



Source: The Integrated Postsecondary Education Data System (IPEDS).

PERCENT UNDERGRADUATE STUDENTS RECEIVING FEDERAL, STATE, OR LOCAL INSTITUTIONAL OR OTHER SOURCES OF NEED OR MERIT GRANT AID*: AY 2009 – AY 2015

The percent of undergraduate students at UIC receiving financial aid is at the 75th percentile of its peer median.



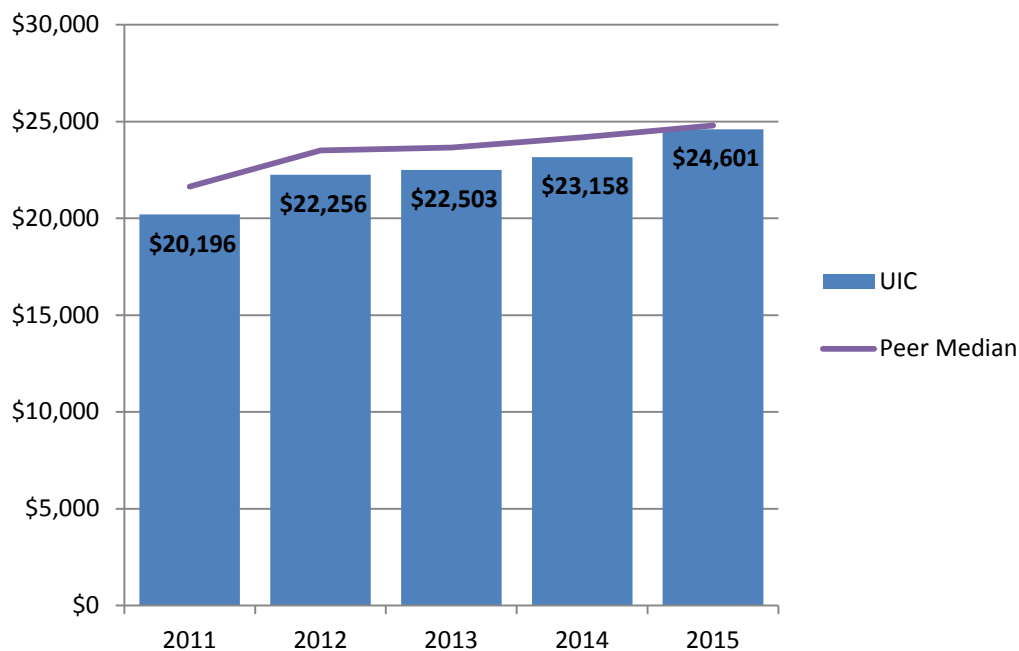
Source: The Integrated Postsecondary Education Data System (IPEDS).

* Excludes PLUS loans, unsubsidized, and private alternative loans.



AVERAGE PER UNDERGRADUATE-BORROWER CUMULATIVE PRINCIPAL BORROWED AY 2011 – AY 2015

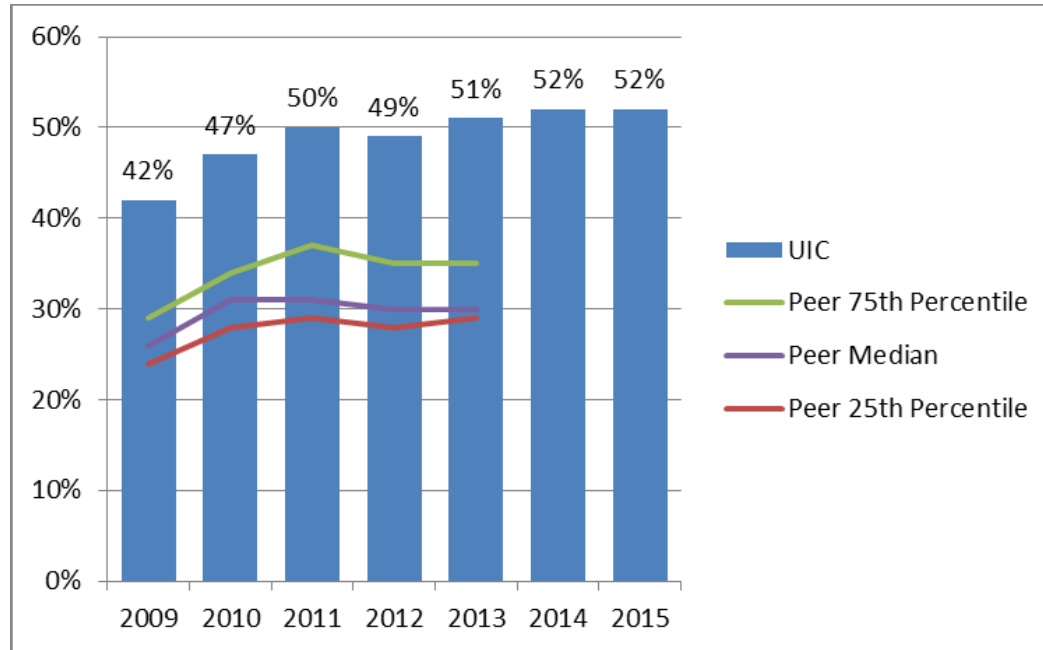
UIC students borrow slightly less on average than students at peer institutions.



Source: Common Data Set (CDS)

PERCENT UNDERGRADUATE STUDENTS RECEIVING PELL GRANTS AY 2009 – AY 2015

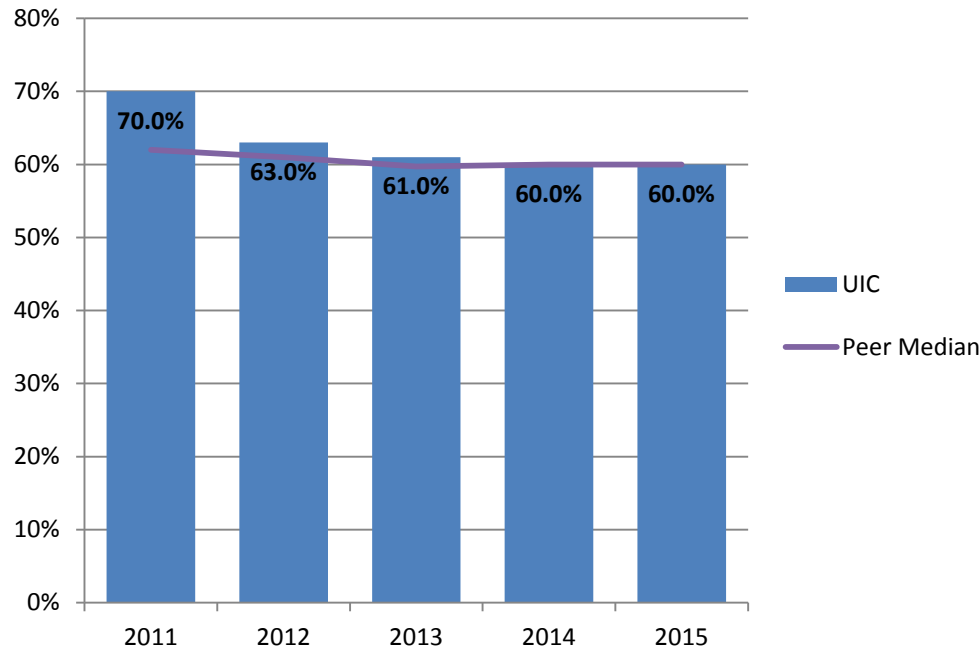
UIC has the highest percent of Pell grant recipients of its peer group.



Source: The Integrated Postsecondary Education Data System (IPEDS).

PERCENT NEED MET OF FULL-TIME UNDERGRADUATES AWARDED ANY NEED-BASED AID* AY 2011 – AY 2015

The average percentage of need met for UIC undergraduates receiving need-based aid is 60%; the same as the peer median in 2015.



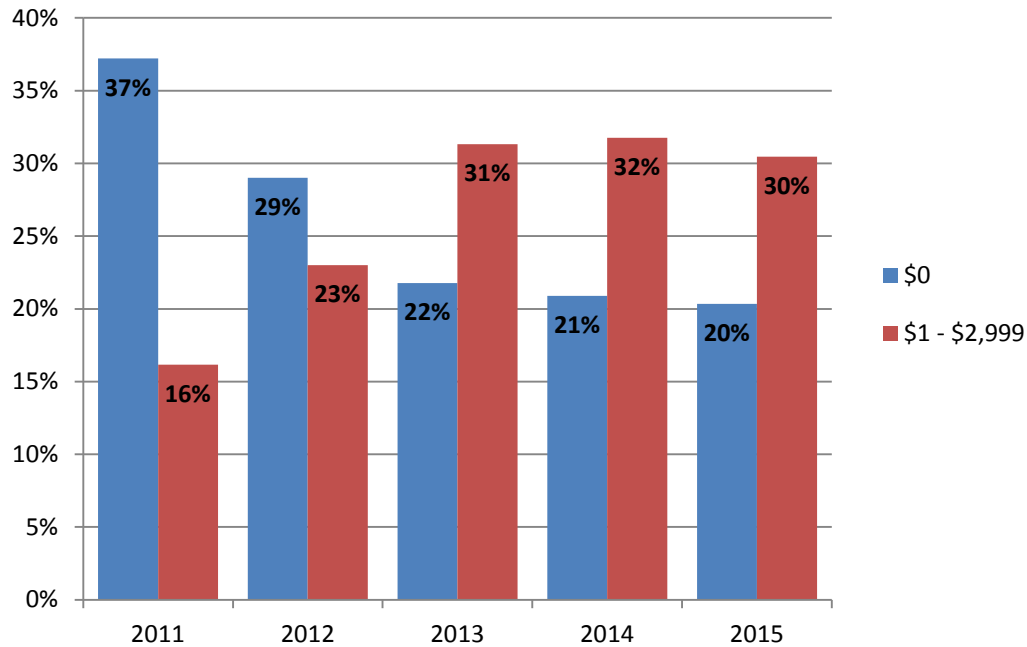
Source: Common Data Set (CDS).

* Excludes any aid awarded in excess of need as well as any that were awarded to replace EFC: PLUS, unsubsidized and private alternative loans.



PERCENT FULL-TIME UNDERGRADUATES PAYING LESS THAN \$3,000 PER SEMESTER FALL 2011 – FALL 2015

Half of undergraduates at UIC pay less than \$3,000 per semester for tuition.



Source: UI Office of Planning and Budgeting and UIC Office of Institutional Research.

Note: Includes all forms of financial aid and tuition waivers. Excludes loans and employment.



ACCOMPLISHMENTS

Total Enrollment

- Set total enrollment record of 29,120 in Fall 2016
- Largest student population in the Chicago area
- Undergraduate enrollment (17,959) increased by 2.2% in Fall 2016

New Undergraduates

- Total of 5,265 and an increase of 4% in Fall 2016
- Increase of 25% in new undergraduate transfers, with a decrease of 5% in first-time full-time freshmen

First-Generation Students

- Increase in undergraduates who are first-generation students (one-third overall and 39% of Fall 2016 entering freshmen)

ACCOMPLISHMENTS

Transfer Students

- Participant in the Illinois Articulation Initiative (IAI), a statewide transfer agreement among more than 100 universities and colleges in Illinois
- Agreement Includes “Transferology”, a statewide tool to assist students in finding courses that transfer between institutions

International Students

- Contracted with Shorelight Education, a revenue generating partnership, to bring qualified undergraduate students to begin in January 2017
- First cohort of mid-year starting freshmen is projected to be 40 students from a variety of countries including India, Vietnam, China, Brazil, United Arab Emirates and Saudi Arabia

ACCOMPLISHMENTS

Pell Recipients

- 52% of undergraduate students were Pell recipients in Fall 2015 and the preliminary figure for Fall 2016 is similar

Scholarships

- Second year of the Chicago Star Scholarship program that funds 250 star scholars annually who transfer from a City Colleges of Chicago
- Star Scholars receive a \$5,000 award over two years

ACCOMPLISHMENTS

New Degree Programs

New bachelor degree programs have been added in the past two years in response to changing labor markets and demand, including:

- BS in Disability and Human Development
- BA in Human Development and Learning
- BS in Integrated Health Studies
- BS in Rehabilitation Sciences
- BA in Public Policy
- BA in Integrated Design and Arts
- BA in Music Business

AREAS OF STRENGTH

Student Debt

- \$24,601 is the average per-undergraduate student debt burden for the 2014-15 graduating class (national average for public and private nonprofit colleges is \$28,950)
- 50% of undergraduate students pay less than \$3,000 per semester for tuition and fees
 - Of those, 20% of undergraduate students pay no tuition and fees, down from a high of 37% in 2011 and trending downward since 2011

3-Year Cohort Default Rates

- Default rates at UIC is below the state and national averages:
 - UIC 3.2%
 - Illinois Universities 9.4%
 - National Public Average, 4 year 7.3%



AREAS OF IMPROVEMENT

Student Success Initiative Programs:

- **Academic Advising**
 - Integrated Planning and Advising System (IPAS)
 - Increasing collaboration/communication among campus advisors
 - Launched the Advising Leadership Council
- **Transition Coaching**
- **Research on Student Success**
 - Student Exit Survey
 - Study Retention and Graduation Factors
 - First-Year Seminars
 - Non-Cognitive Student Indexes
 - Early Alerts
- **Finish line/Degree Completion Program**
 - Finish in Four
- **Co-requisite Remediation**

STRATEGY FOR IMPROVEMENT

Tuition and Financial Aid

- Increase tuition revenue through broader geographic diversity and on-line degree programs
- Seek additional merit scholarship funding to enhance recruitment and prioritize development efforts
- Increase scholarships and awards via UIC SnAP, centralized scholarship application system

Recruitment and Retention

- Continue implementation of Student Success Initiative
- Implement recommendations of Progression and Success of African-American Students Task Force

AREAS TO WATCH

Institutional Financial Aid Policy

- Optimize institutionally funded financial aid by linking awards to student outcomes
- Streamline scholarship award process
- Evaluate financial aid policies and recommend cost saving changes that have minimal impact on access and diversity

MAP Funding

- Impact of State reimbursement of MAP grants for FY2017