

# UIC HEALTH SCIENCE COLLEGES

## Academic Mission Report: Board of Trustees Hospital Committee January 20, 2010

Joseph A. Flaherty, MD  
Dean, College of Medicine

**INNOVATION**

**EXCELLENCE**

**SERVICE**



## Brief History

- 1858 Illinois Eye and Ear Infirmary opens
- 1859 College of Pharmacy founded
- 1909 Institute of Juvenile Research opens
- 1913 University charters Colleges of Dentistry and Medicine
- 1955 1<sup>st</sup> class of students in the School of Nursing
- 1961 College of Applied Health Sciences begins as the School of Associated Medical Sciences in the College of Medicine.
- 1970 School of Public Health established
- 1970 HSC expands to Peoria
- 1971 HSC expands to Rockford & Urbana-Champaign
- 1980 new UIC Hospital opens & Nursing expands to Quad Cities
- 1986 Nursing: WHO Collaborating Center for Nursing & Midwifery
- 2005 College of Medicine Research Building opens

## Mission

To produce new knowledge in the medical sciences, to develop best practices in health care delivery and to educate the next generation of healthcare professionals and scientists committed to serving the needs

## Vision

A world class research intensive and innovative academic center deeply connected to the fabric of a thriving multicultural city and state and driven towards finding solutions to urban and rural disease and prevention, and to the biomedical adaptations needed to pursue optimal health and well being.

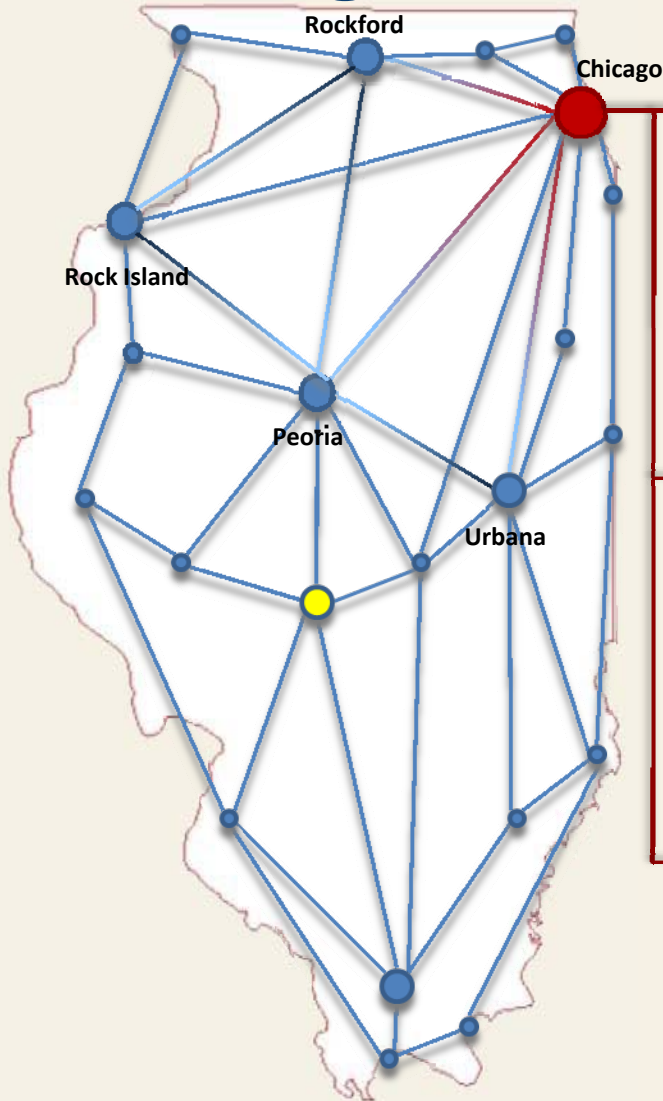
# UIC HEALTH SCIENCE COLLEGES

## Student Enrollment Demographics

ACADEMIC YEAR 2009	APPLIED HEALTH SCIENCES	DENTISTRY	MEDICINE	NURSING	PHARMACY	PUBLIC HEALTH	TOTAL
UNDERGRADUATE	730			284			1014
GRADUATE (MS, PHD, DNP)	487	13	241	788	135	718	2382
PROFESSIONAL (DDS, DPT, MD, PHARMD)	125	318	1382		654		2479
TRAINEES (RESIDENTS & FELLOWS)		81	820		29		930
<b>TOTAL</b>	<b>1342</b>	<b>412</b>	<b>2443</b>	<b>1072</b>	<b>818</b>	<b>718</b>	<b>6805</b>

# UIC HEALTH SCIENCE COLLEGES

## Guiding Values

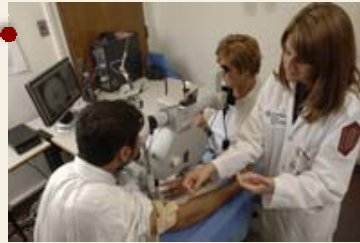


### DIVERSITY & PUBLIC SERVICE



- Institute on Urban Medicine
- National Center for Rural Health
- International Programs & Affiliations
- NIH Center of Excellence in Women's Health

### PATIENT SAFETY



- Public private research partnerships
- M.S. in Patient Safety Leadership
- Graduate Certificates
  - Patient Safety Organizations
  - Patient Safety, Error Science, & Full Disclosure

### STATEWIDE RESOURCE



- Only major public academic medical center in Illinois
- Educational & Clinical services reach every county in Illinois

## Who We Are

- **Education:**

- 4 campuses: Chicago, Peoria, Rockford, Urbana
- Largest U.S. College of Medicine
- 30+ Affiliated Hospitals statewide
- Trains 1 of 6 Illinois physicians
- 70% of the minority physicians in Chicago
- 60% of the minority physicians in Illinois
- 44% of the state's dentists
- 33% of the state's pharmacists

- **Research:**

- FY2009: \$224 million in total research expenditures
- New CCTS Grant: \$20 million/5 yrs
- Medicine: \$125 million in annual research expenditures
- AHS: ranks in Top 3 in NIH funding
- Nursing: ranks in Top 3 in NIH funding
- Pharmacy: ranks in Top 4 in NIH funding
- Public Health: ranks in Top 10 in NIH funding

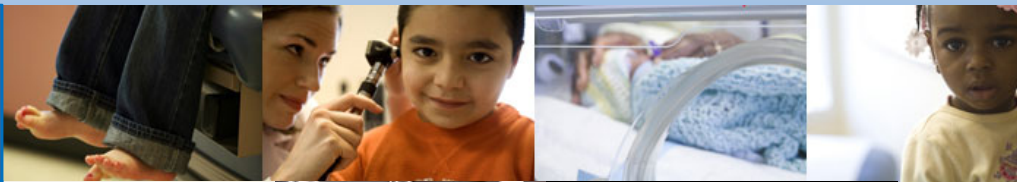

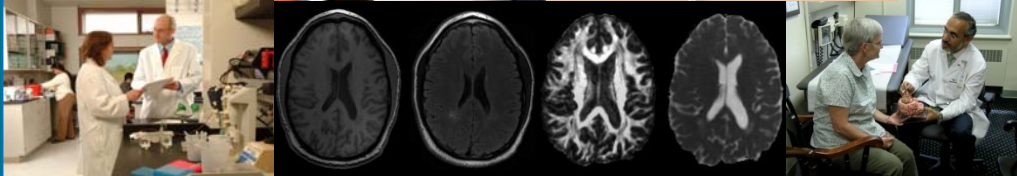
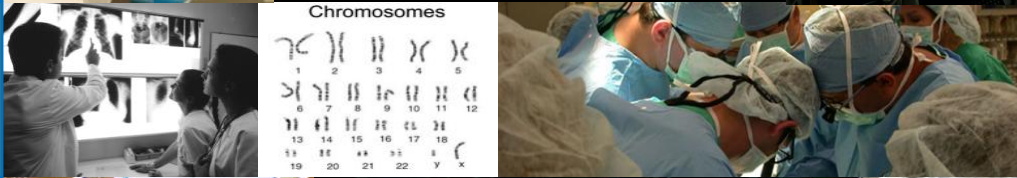
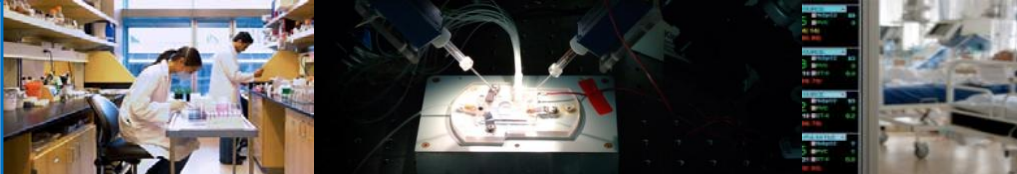
- **Clinical:**

- 600,000 visits
- State's #1 Public Aid provider
- 119,000 patients



# UIC HEALTH SCIENCE COLLEGES

## Unique Identity & Focus on Five

<p>Women &amp; Children</p>	
<p>Surgical Transplant &amp; Robotics</p>	
<p>Neurosciences</p>	
<p>Cancer</p>	
<p>Clinical Translational Research</p>	

## Developing Clinical Research Infrastructure

- **Funded CTSA and CTO (NIH)**
- **Funded Comprehensive Cancer Center (NCI)**
- **Develop junior faculty in clinical research(K30)**
- **Integrate IS with hospital, HSC, research**



## Clinical Goals 2010

- **Strategic Satellites  
(Ambulatory Surgery Center?)**
- **Primary Care Referral Strategy  
with Community Physicians/Groups**
- **Optimally Managed Outpatient Care Center**
- **Improved Customer Service**
- **Reduced Medical Malpractice Costs**
- **Maximizing Our 6 Health Science Advantage**