

# FINANCIAL REPORT



# UNIVERSITY OF ILLINOIS

URBANA-CHAMPAIGN • CHICAGO • SPRINGFIELD

BOARD OF TRUSTEES

January 21, 2016

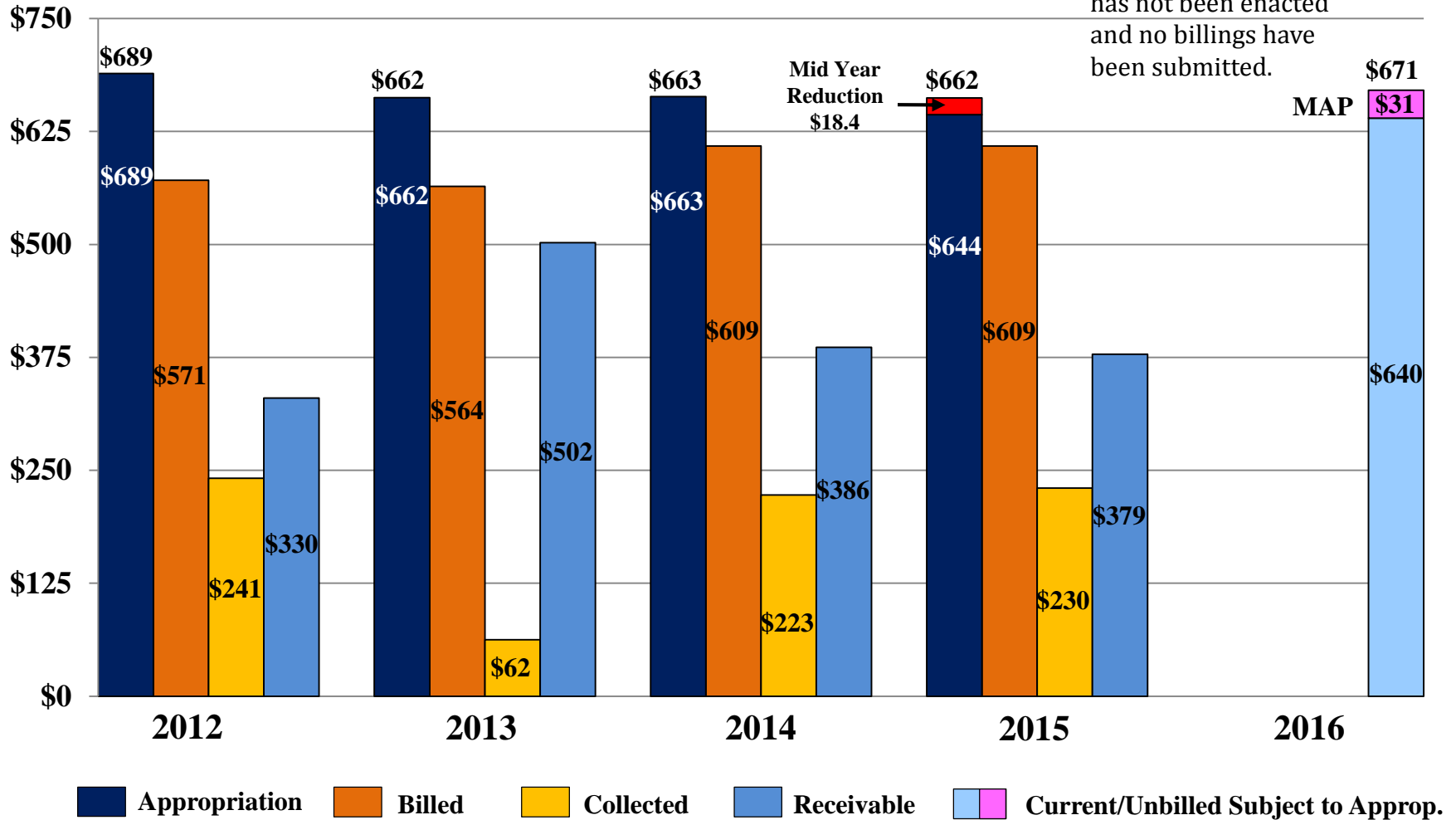
# Since November BOT Meeting

- State budget remains at impasse with no FY 2016 University operating, capital or Monetary Award Program appropriations – budget timing and amounts remain uncertain
- FY 2016 unbilled State reimbursement vouchers now exceed \$500 million
- State had \$7 billion in unpaid vouchers at January 1, 2016; no payments to State pension funds in November and December
- State payments for managed care Medicaid claims have slowed, enhanced Medicaid payments and future deposits to the Medicaid Trust Fund are in question
- Institute of Government & Public Affairs reported the State's economic growth slowed considerably at end of calendar 2015
- Fire Training Institute received special revenue funding from the State
- FY 2015 Financial Audit to be released by the Illinois Auditor General with clean (unmodified) opinion – report to Board in March
- Standard & Poor's affirmed A rating with stable outlook for the medical center
- Ratings for the AFS financing expected to be affirmed by Moody's Investors Service (Aa3 rating with negative outlook) and Standard & Poor's (AA- rating with negative outlook)

# State Appropriation Revenue

## Billings and Collections through January 19, 2016

Dollars in Millions

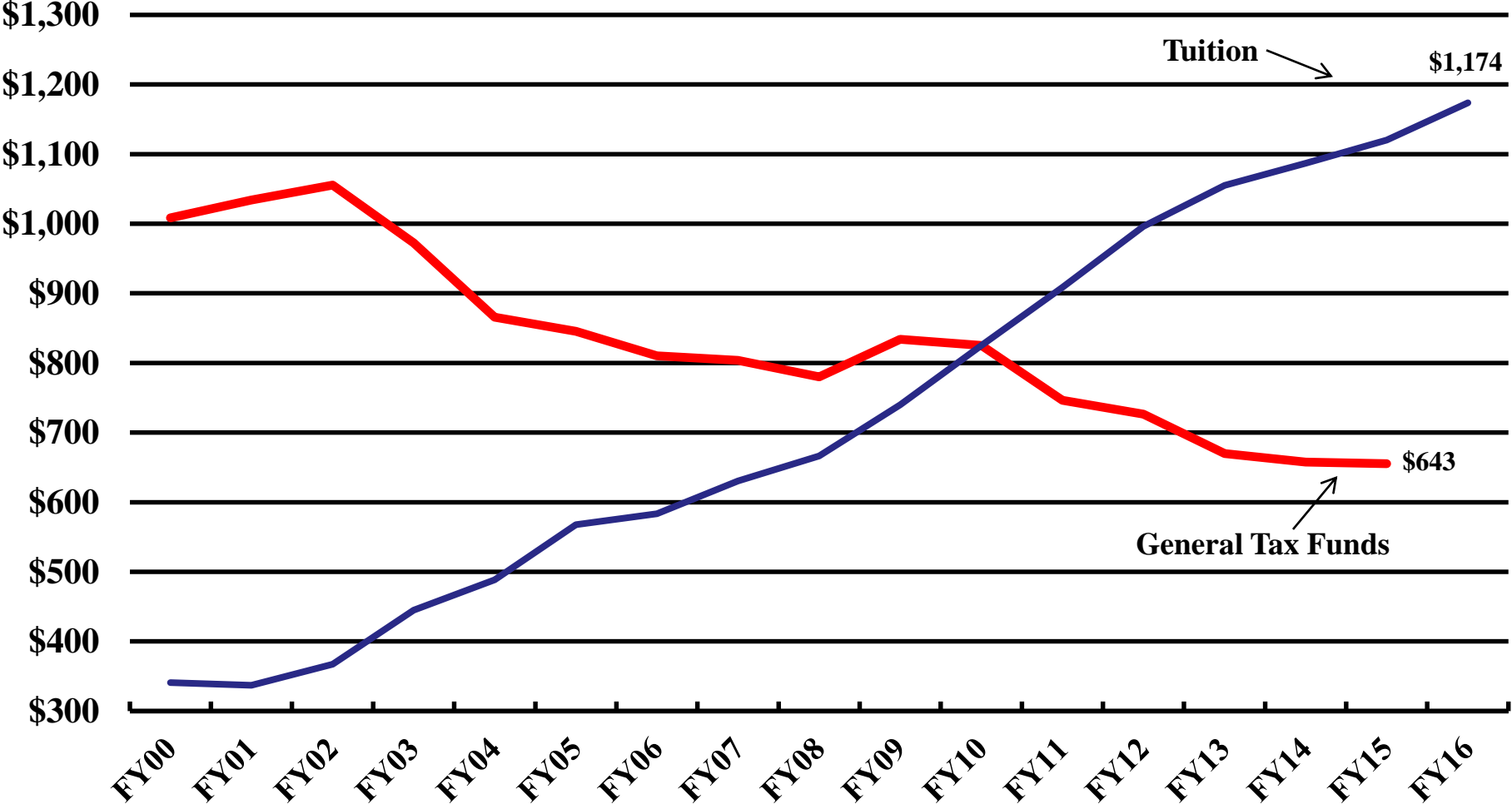


# State and Tuition FY 2000 – FY 2016

- **Total Enrollment FY 2000 over 67,000**
- **Total Enrollment FY 2016 over 80,200**

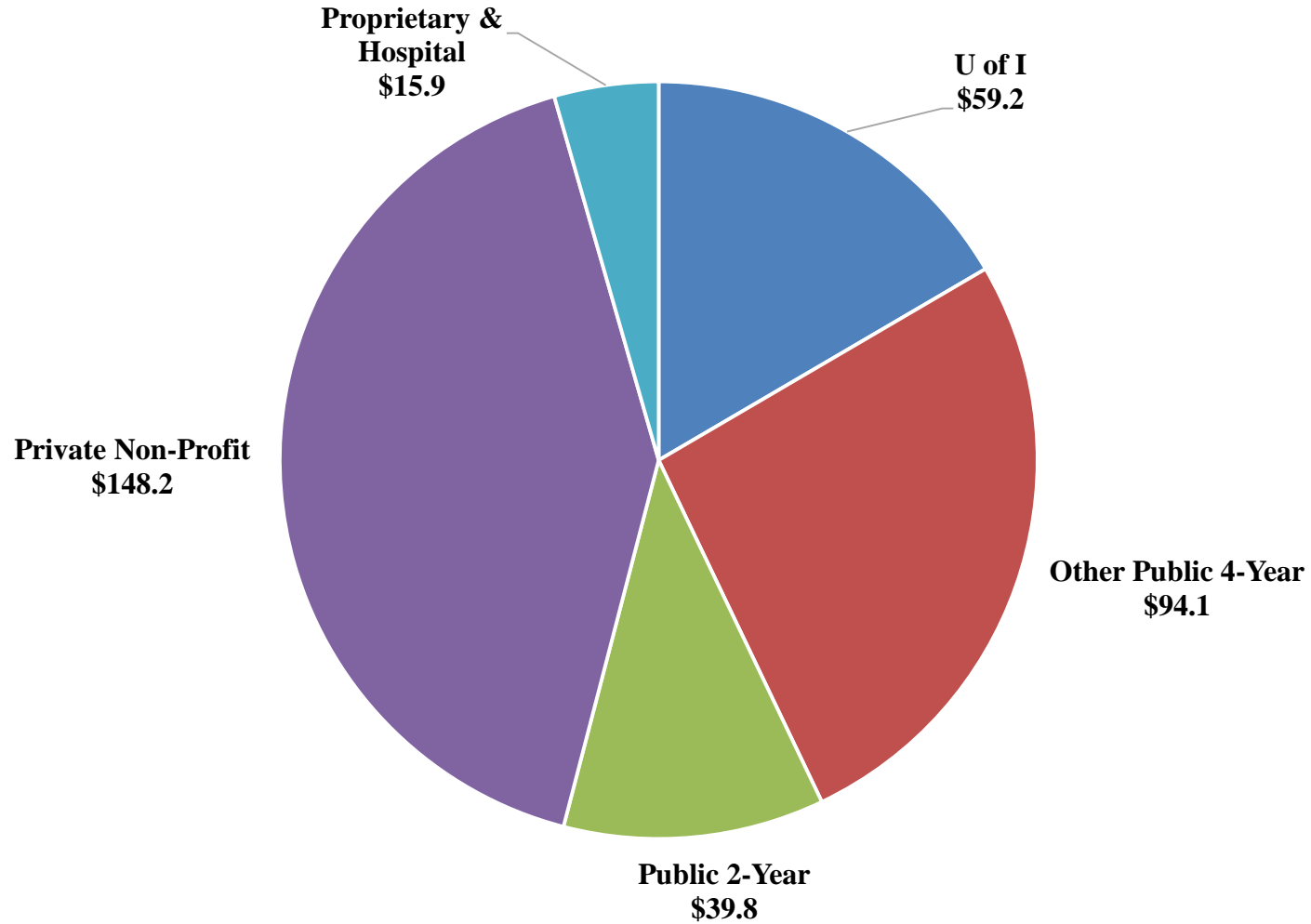
In Millions

In Constant estimated 2016 CPI Dollars



Sources: Budget Summary for Operations. State include GRF and all other state fund appropriations. State for FY02 – FY16 exclude \$24.9 million for Health Insurance. State Surveys are included in State beginning in FY09. Assumes 2.0% inflation in FY2016.

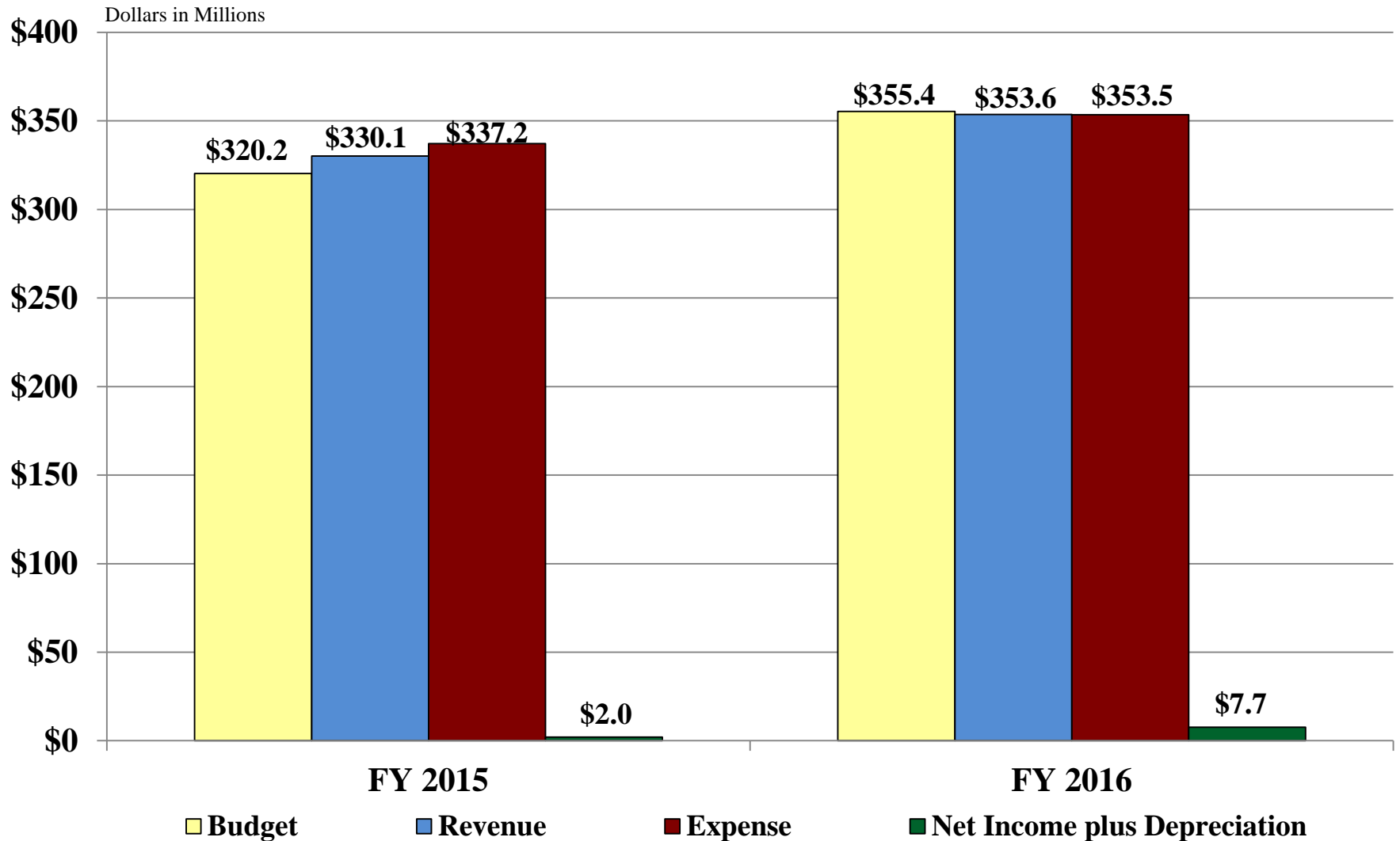
# FY 2015 MAP Awards



**\$357.2 Million**

# Hospital Revenue/Expense/Net Income

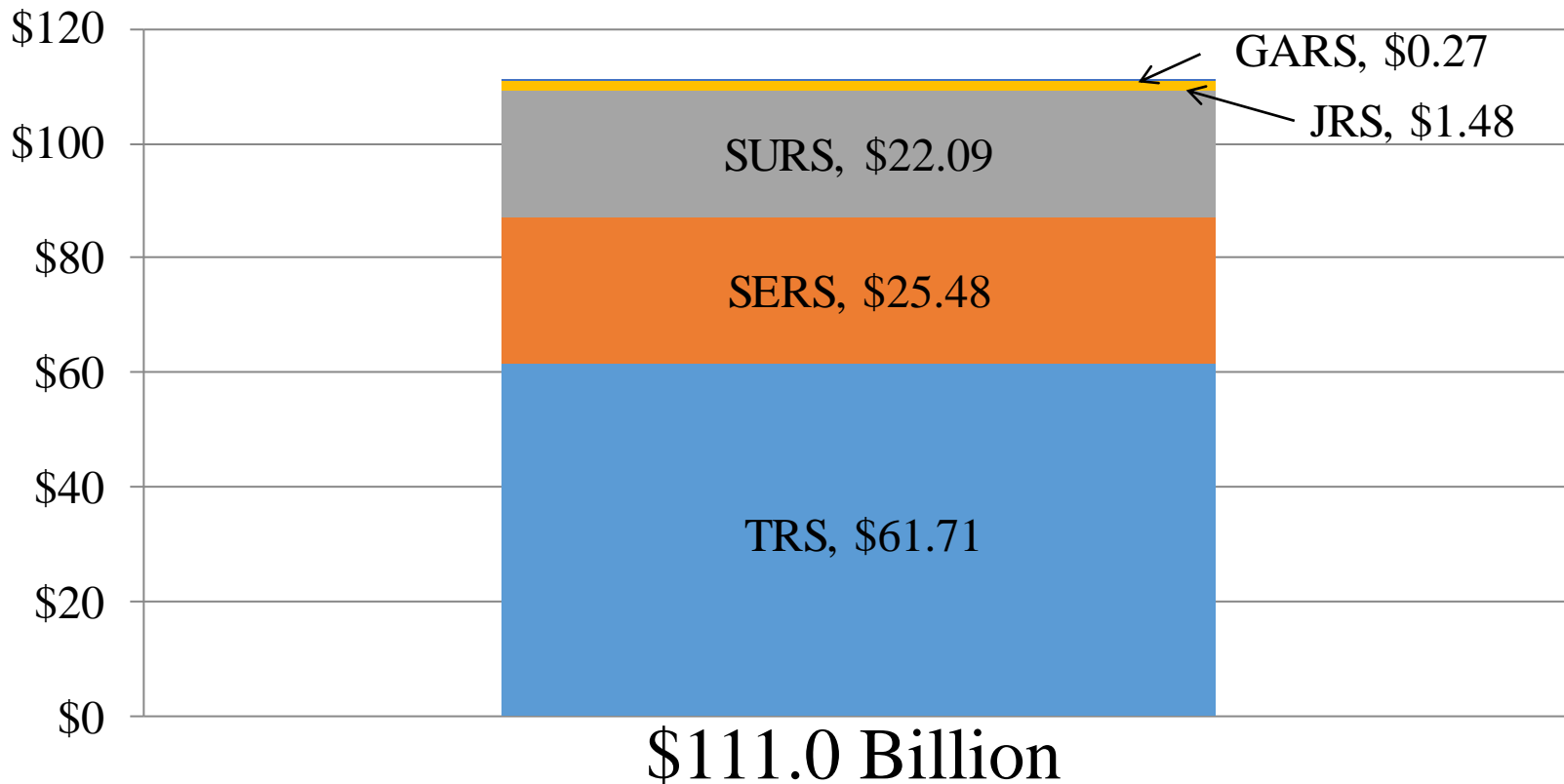
## Fiscal Year 2015 and 2016 through November 30th



# State of Illinois Unfunded Pension Liability

As of June 30, 2015

(Dollars in Billions)



Asset/Liability Ratio 41.9%

# Academic Achievement/Student Demand

Undergraduate student academic achievement at all three campuses

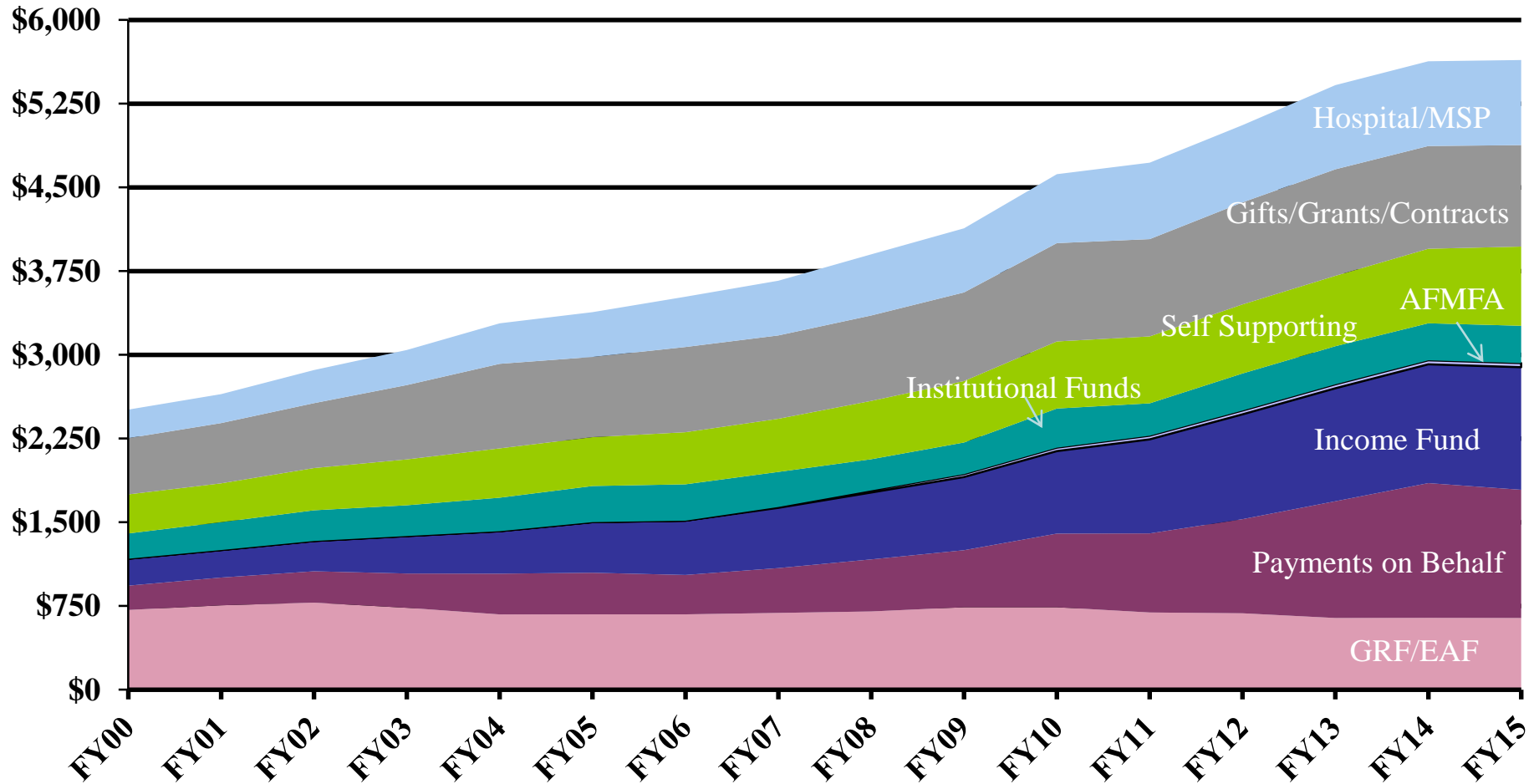
- UIC had record enrollment in the current year and 6 year graduation rate improved over 20% over the last 10 years and nearly doubled in the last 25 years
- UIS undergraduate enrollment has increased over 62% since Fall 2000, leader in on-line programs
- UIUC had 6<sup>th</sup> consecutive year of record enrollment and 6 year graduation rate of 85%, Average ACT score over 29 for freshman class
- Over 4 applicants for each freshman slot
- The 3 campuses of the U of I received over 51,400 applications for First-Time Freshmen
- Graduation rates and other achievement indicators improving at all three campuses
- Student loan and default rates below national averages



# Diversity of Revenues

## All Sources of Funds FY 2000 – FY 2015

(Dollars in millions)

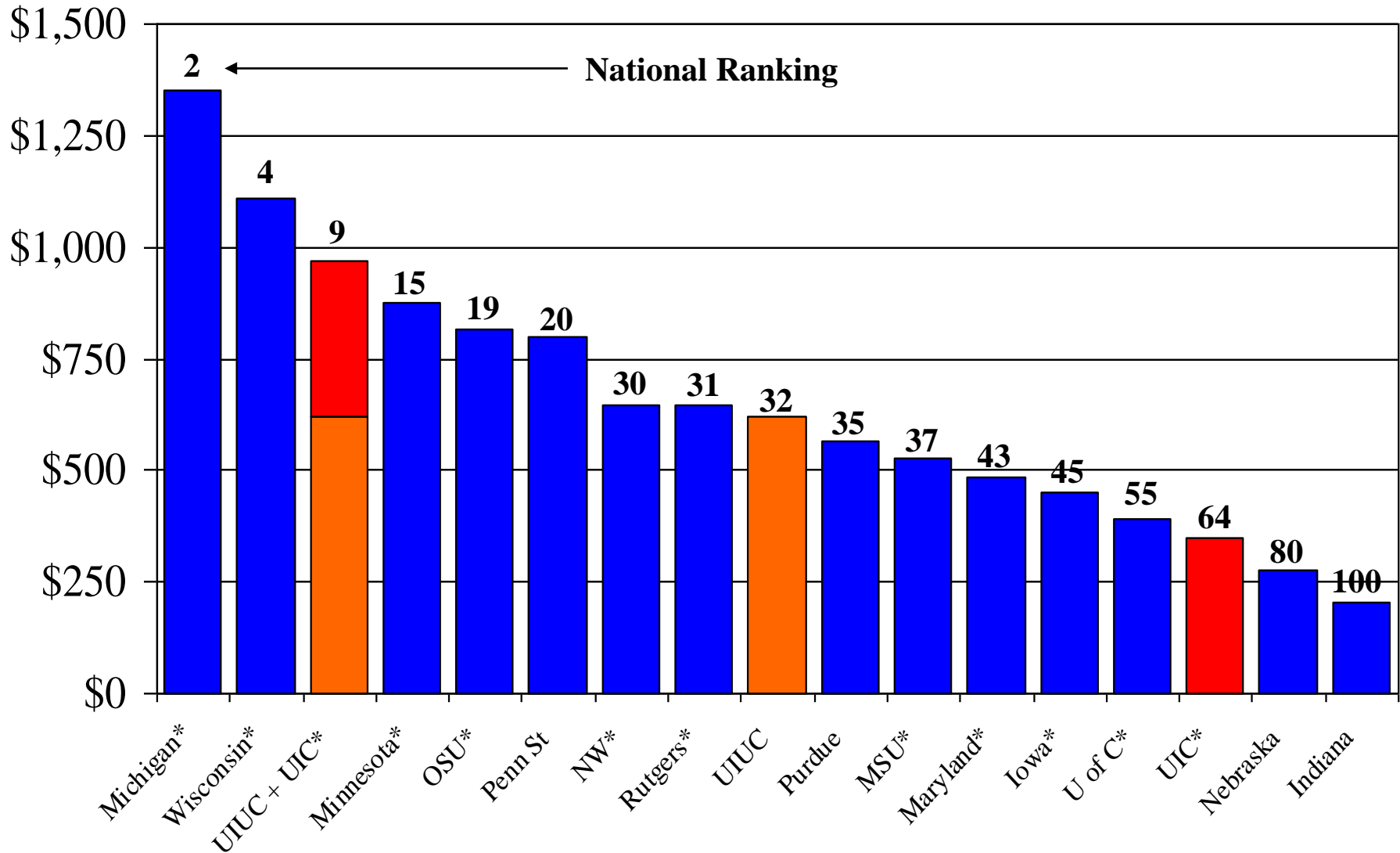


Sources: Budget Summary for Operations, state payments on behalf, and RAMP. Waivers excluded. FY04 Payments on Behalf excludes one time proceeds from bond sale.

GRF for FY02 – FY15 exclude \$24.9 million for Health Insurance, Payments on Behalf adjusted to include the \$24.9 million.

# Total R & D Expenditures FY 2014

(Dollars in Millions)



Source: NSF; All Fields.

\* Have medical colleges.

# Federal Omnibus Budget Impact on Budget/Research

In December, Congress passed an omnibus appropriation package that carries positive news for higher education and research. Below is a recap of some of the major outcomes.

Federal Agency/Program	FY 2016 Omnibus	FY 2016 Omnibus vs. FY 2015
National Science Foundation (NSF)	\$7.46 billion	+1.6%
National Institutes of Health (NIH)	\$32.1 billion	+6.6%
Department of Energy (DOE) Office of Science	\$5.35 billion	+5.5%
United States Department of Agriculture (USDA) National Institute of Food and Agriculture (NIFA) Agriculture and Food Research Initiative (AFRI)	\$350 million	+7.7%