

Reported to the Board of Trustees  
January 31, 2019

# University of Illinois at Springfield

## Performance Metrics

**TUITION AND FEES AND FINANCIAL AID UPDATES BY:  
UNIVERSITY OFFICE FOR PLANNING AND BUDGETING  
DECEMBER 19, 2018**

**REPORTED BY:  
CHANCELLOR SUSAN J. KOCH  
JANUARY 31, 2019**

# Peer Groups



## **University of Illinois at Springfield**

Clarion University of Pennsylvania

Emporia State University

Farmingham State University

Georgia College and State University

Rutgers University - Camden

University of Baltimore

University of Michigan - Flint

University of Nebraska at Kearney

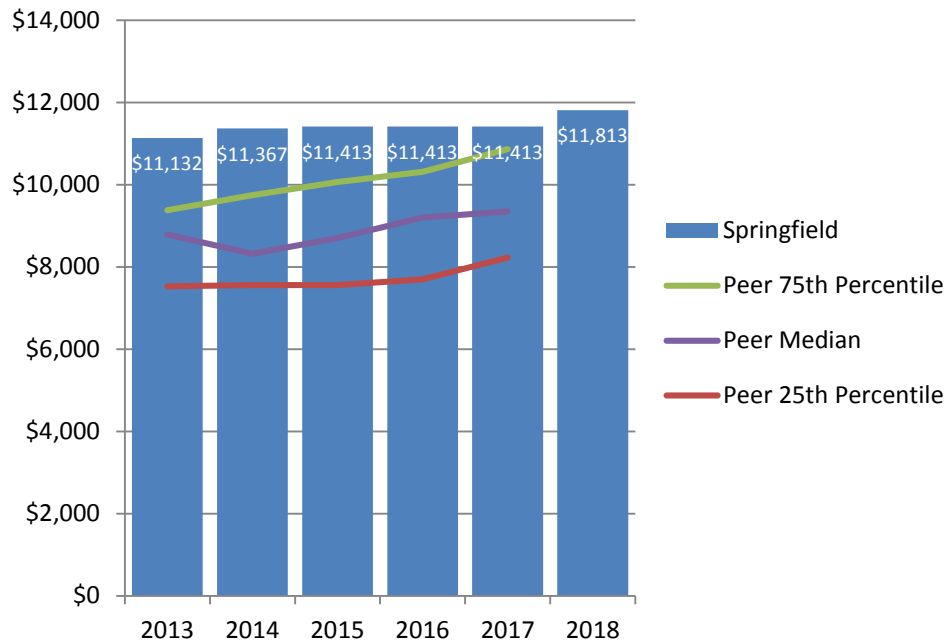
University of Southern Maine

University of Texas at Tyler

# Tuition and Financial Aid

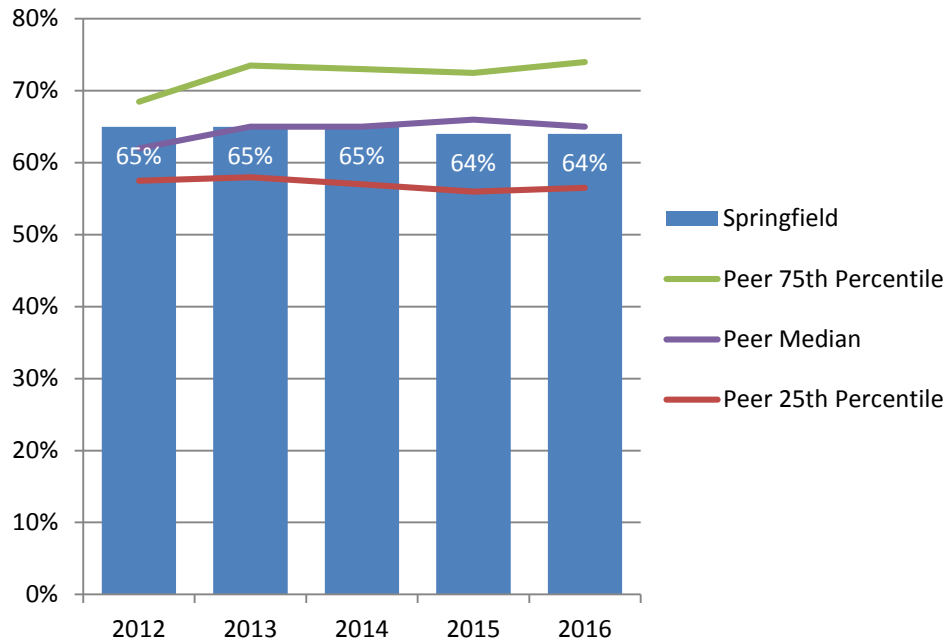


# Full-Time First-Time Undergraduate In-State Tuition and Fees Per Academic Year AY 2013 – AY 2018



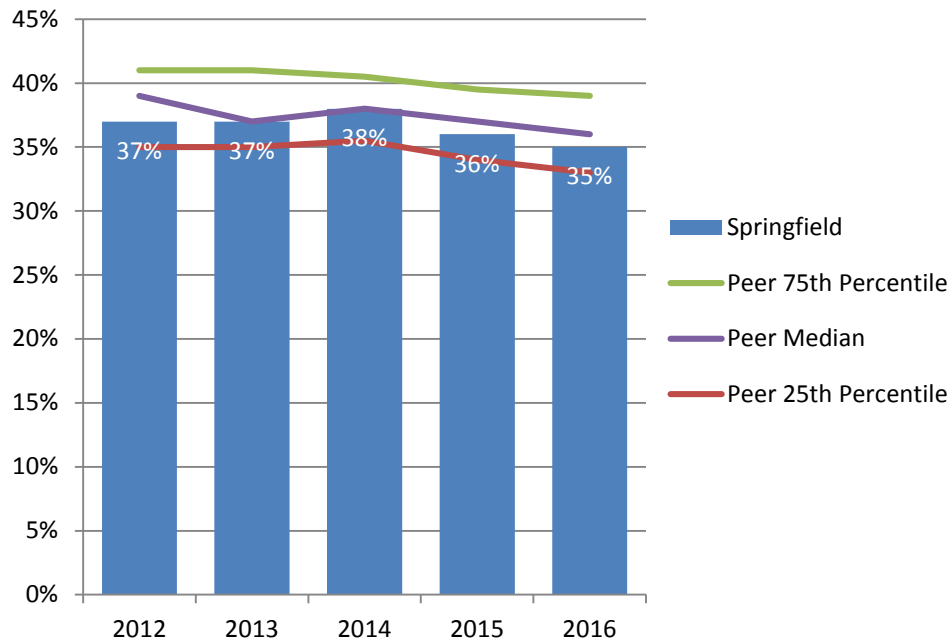
Full-time first-time undergraduate tuition and fees at the University of Illinois at Springfield are higher than the peer median.

# Percent of Undergraduate Students Receiving Federal, State, or Local Institutional or Other Sources of Need or Merit Grant Aid: AY 2012 – AY 2016



The percent of undergraduate students at the University of Illinois at Springfield who receive financial aid is on par with the peer median.

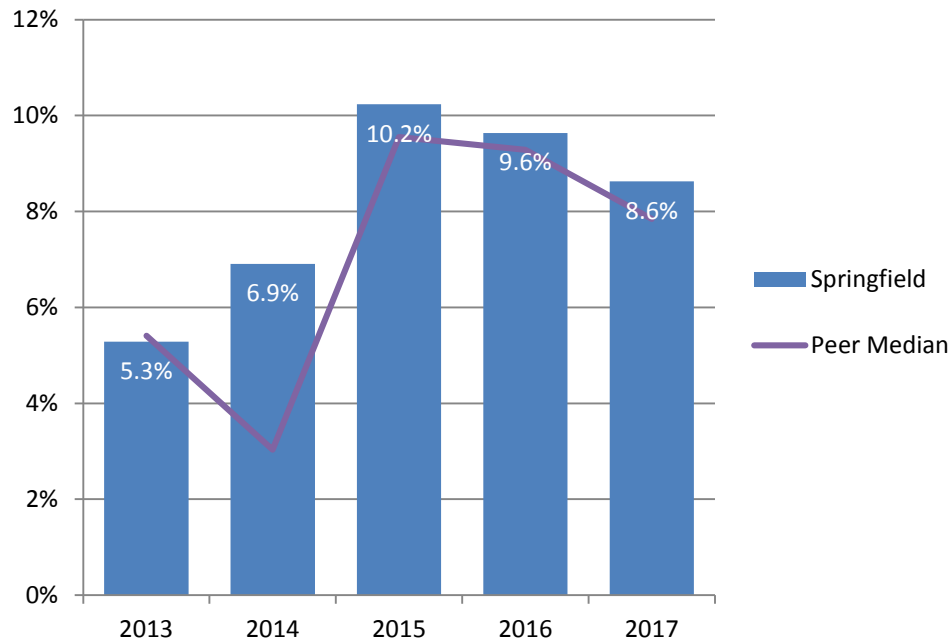
# Percent of Undergraduate Students Receiving Pell Grants AY 2012 – AY 2016



The percent of Pell grant recipients at the University of Illinois at Springfield is on par with the peer median.

# Percent of Full-Time Undergraduates Awarded Any Need-Based Scholarship/Grant Aid Where Need Was Fully Met: AY 2013 – AY 2017

(Exclude PLUS loans, unsubsidized, and private alternative loans)

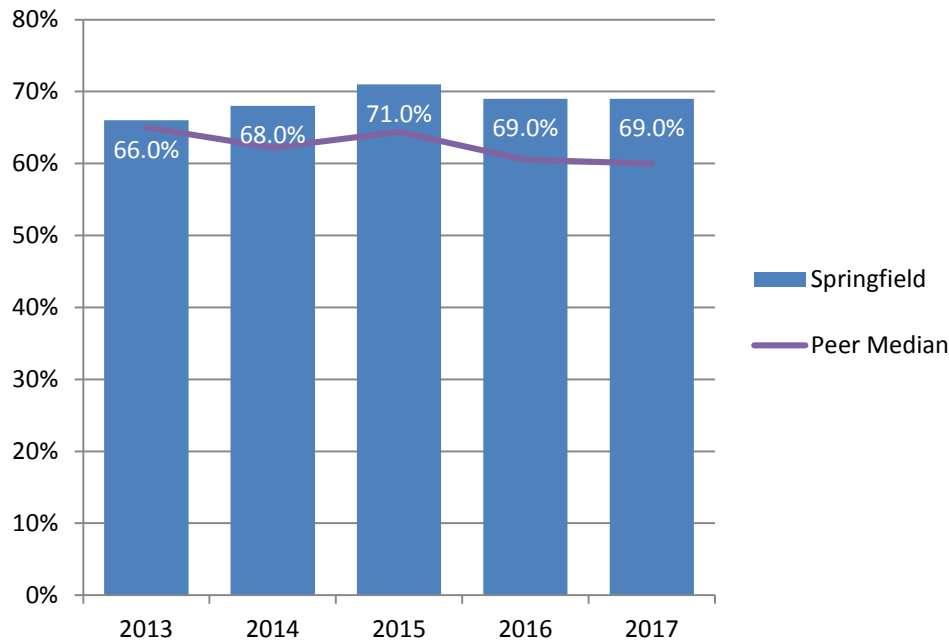


Compared to its peer median, a higher percentage of need-based aid recipients at the University of Illinois at Springfield have their need fully met.

Note: Exclude University of Baltimore due to lack of available data.

# Percent of Need Met of Full-Time Undergraduates Awarded Any Need-Based Aid AY 2013 – AY 2017

(Exclude any aid awarded in excess of need as well as any that were awarded to replace EFC: PLUS, unsubsidized and private alternative loans)



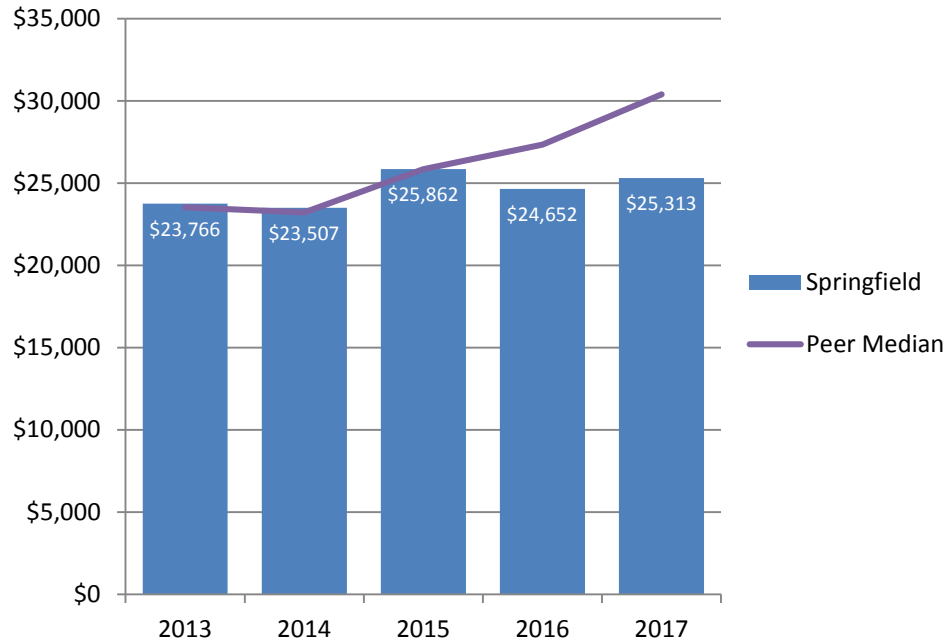
The percent of University of Illinois at Springfield students whose financial needs were completely met is higher than the peer median.

Note: Exclude University of Baltimore due to lack of available data.



# Average Per-Undergraduate-Borrower Cumulative Principal Borrowed AY 2013 – AY 2017

(Exclude students who transferred in, money borrowed at other institutions, parent loans, and students who did not graduate with a bachelor's degree)

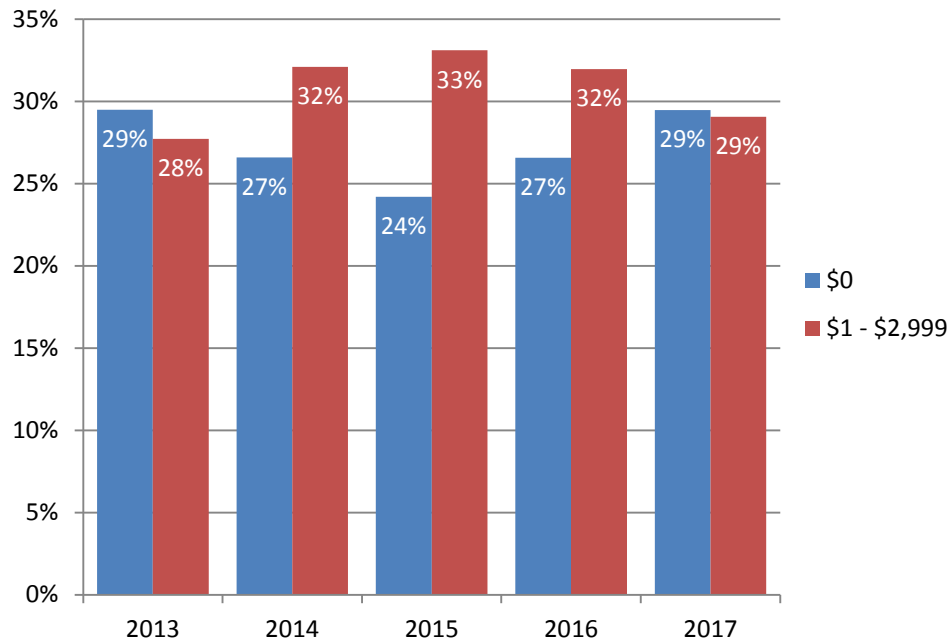


Since AY 2016, the average debt of University of Illinois at Springfield students is lower than the peer median.

Note: Exclude University of Baltimore and University of Southern Maine due to lack of available data.

# Percent of Full-Time Undergraduates Paying Less than \$3,000 Per Semester Fall 2013 – Fall 2017

(Include all forms of financial aid and tuition waivers. Exclude loans and employment)



More than one-half of undergraduates at the University of Illinois at Springfield pay less than \$3,000 per semester for tuition and mandatory fees.

# **University of Illinois at Springfield**

## **Performance Metrics Analysis**

**TUITION AND FEES AND FINANCIAL AID UPDATES**

**REPORTED BY:**

**CHANCELLOR SUSAN J. KOCH**

**JANUARY 31, 2019**

# Areas Meeting or Exceeding Expectations

- UIS is attracting an economically diverse student body
- Average debt of UIS students is lower than students at its peer institutions
- UIS financial assistance has kept pace with increased educational costs
- UIS has increased scholarship awards

# Accomplishments

- UIS continues to increase the enrollment of students from under-represented groups many of whom are first generation and economically disadvantaged
- Strategic packaging of financial aid continues to enhance affordability and accessibility
- UIS tuition remains highly competitive compared to private and public university peers
- UIS offers a student financial literacy training program for undergraduate and graduate students

# Areas Needing Improvement

- Staffing in the Office of Financial Assistance
- Need-based scholarships

# Strategy to improve Staffing in the Office of Financial Assistance

- Actions:
  - Attract and hire qualified individuals for staff positions

# Strategy to improve **Need-based Scholarships**

- Actions:
  - Continue strategically awarding need-based financial aid to meet the needs of qualified students
  - Scholarships are the top priority for the university’s “Reaching Stellar” fund-raising campaign



# Areas we are watching

- Tuition and fees compared to other public universities in Illinois and peer private institutions
- Student debt and fees compared to other public universities in Illinois
- Federal and state legislation related to financial aid