

University of Illinois at Urbana-Champaign

Dashboard Indicators

ADMISSIONS, STUDENT QUALIFICATIONS, TRANSFER ENROLLMENTS UPDATES BY:
UNIVERSITY OFFICE FOR PLANNING AND BUDGETING
MAY 20, 2014

PRESENTED BY:
CHANCELLOR PHYLLIS WISE
JULY 24, 2014

Reported to the Board of Trustees
July 24, 2014

Peer Groups



University of Illinois at Urbana-Champaign*

University of California - Berkeley*

University of California - Los Angeles

University of California - San Diego

University of Michigan - Ann Arbor

University of North Carolina - Chapel Hill*

University of Texas - Austin*

University of Washington

University of Wisconsin - Madison

University of Virginia

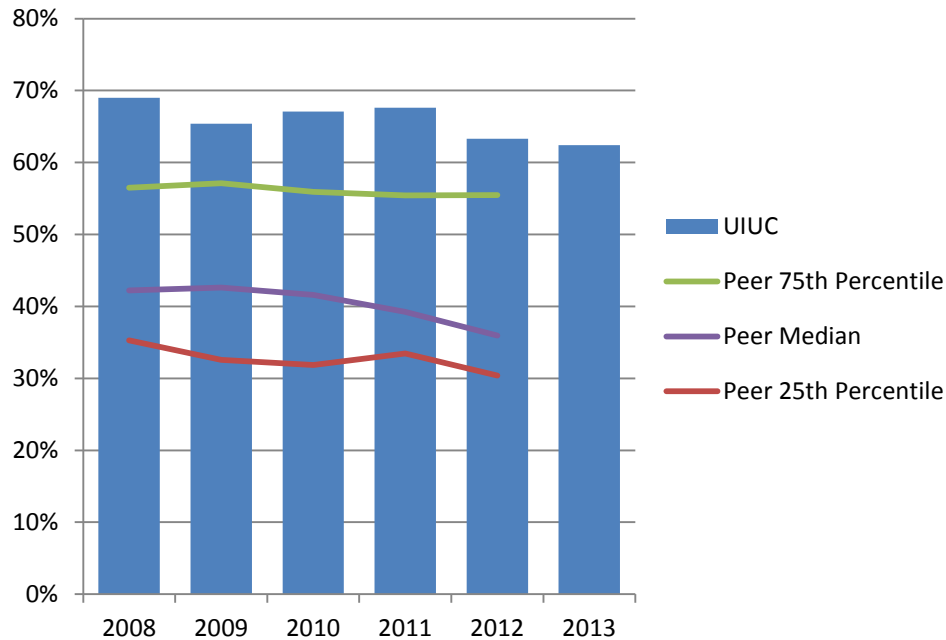
* No medical center.

Admissions, Student Qualifications and Transfer Enrollments



Percent First-Time Freshmen Applicants Admitted*

Fall 2008 – Fall 2013

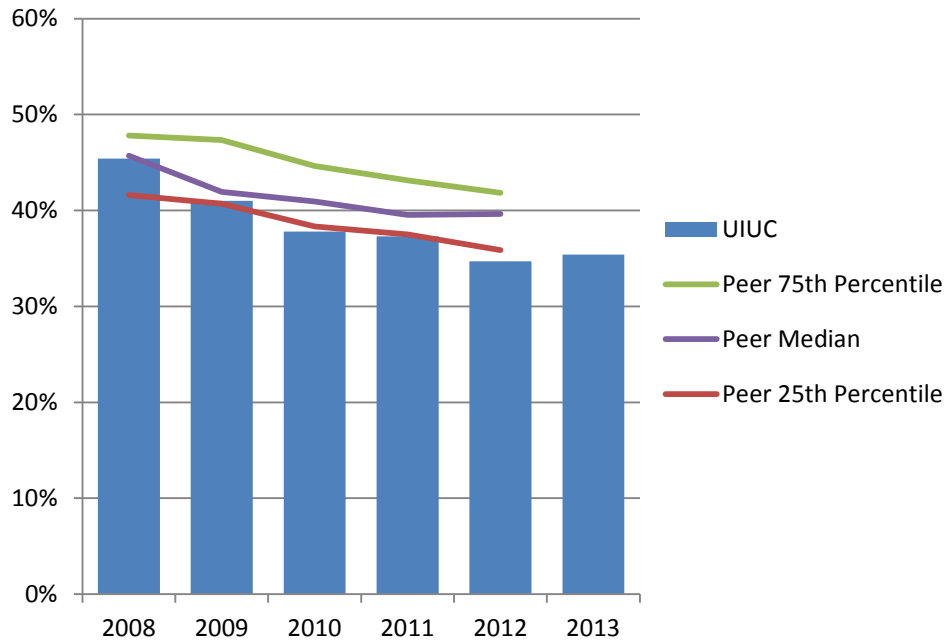


University of Illinois at Urbana-Champaign admits a higher percent of freshman applicants compared to the peer median.

* Percent Admitted = Percent of (total admits divided by total applicants). Fall 2012 peer data not available.

Percent First-Time Freshmen Admissions Yield*

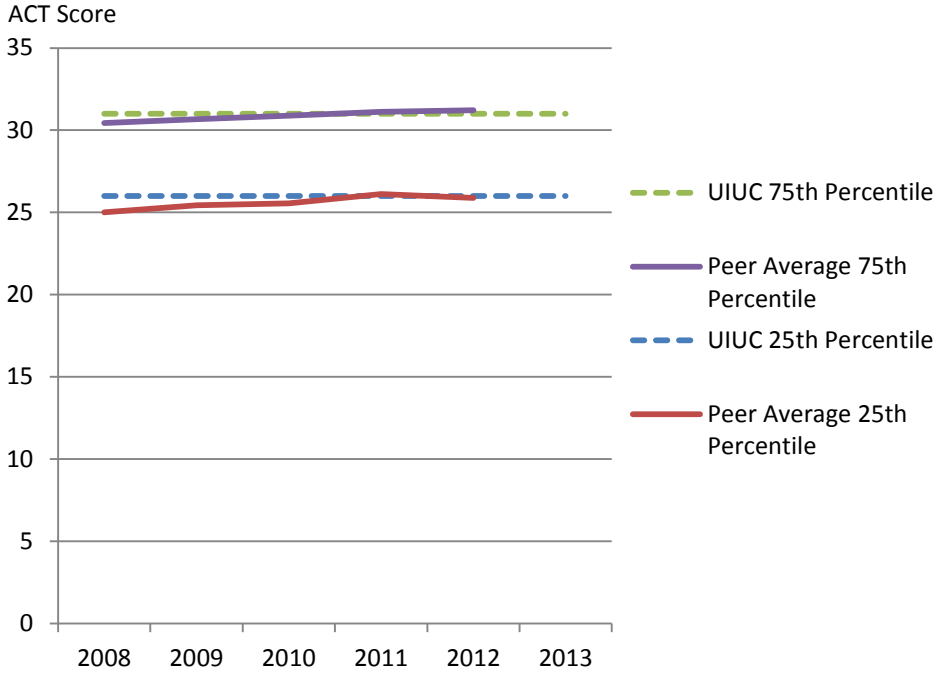
Fall 2008 – Fall 2013



Admissions yield at the University of Illinois at Urbana-Champaign has fallen below the peer median.

* Admissions Yield = Percent of (total enrolled divided by total admits).

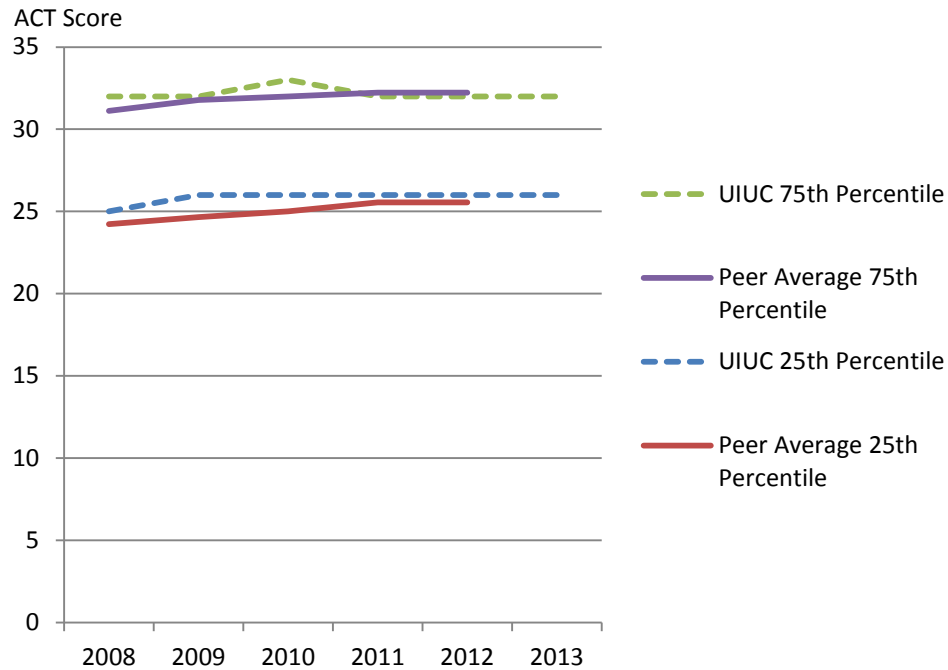
Entering Freshmen ACT Composite Scores 25th and 75th Percentile Fall 2008 – Fall 2013



ACT scores of incoming freshmen at the University of Illinois at Urbana-Champaign are on par with peers.

Note: Fewer students at peer institutions submit ACT scores.

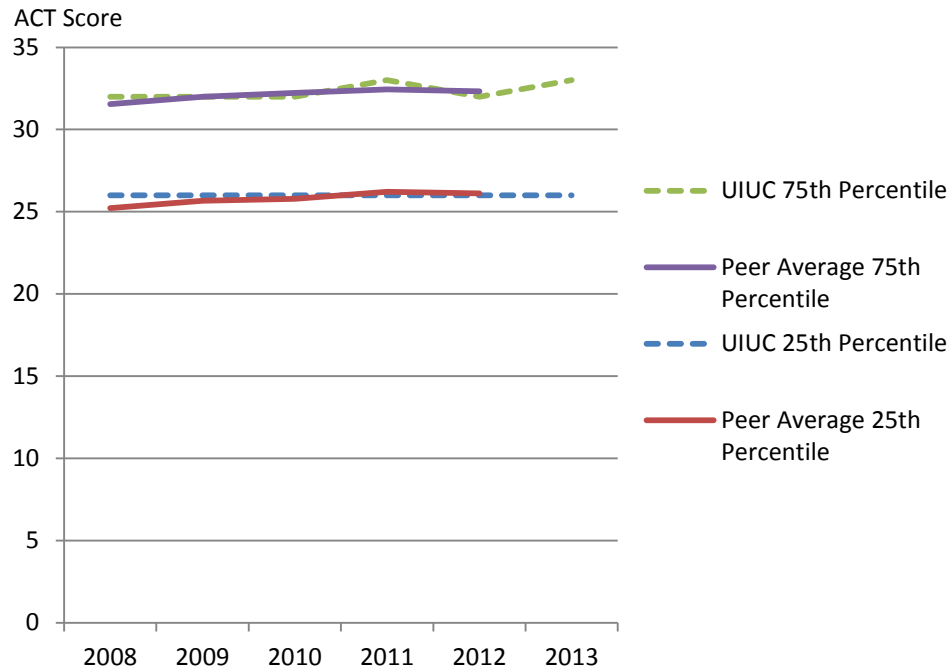
Entering Freshmen ACT English Score 25th and 75th Percentile Fall 2008 – Fall 2013



ACT English scores of incoming freshmen at the University of Illinois at Urbana-Champaign are on par with peers.

Note: Fewer students at peer institutions submit ACT scores.

Entering Freshmen ACT Math Score 25th and 75th Percentile Fall 2008 – Fall 2013



ACT Math scores of entering freshmen at the University of Illinois at Urbana-Champaign are on par with peers.

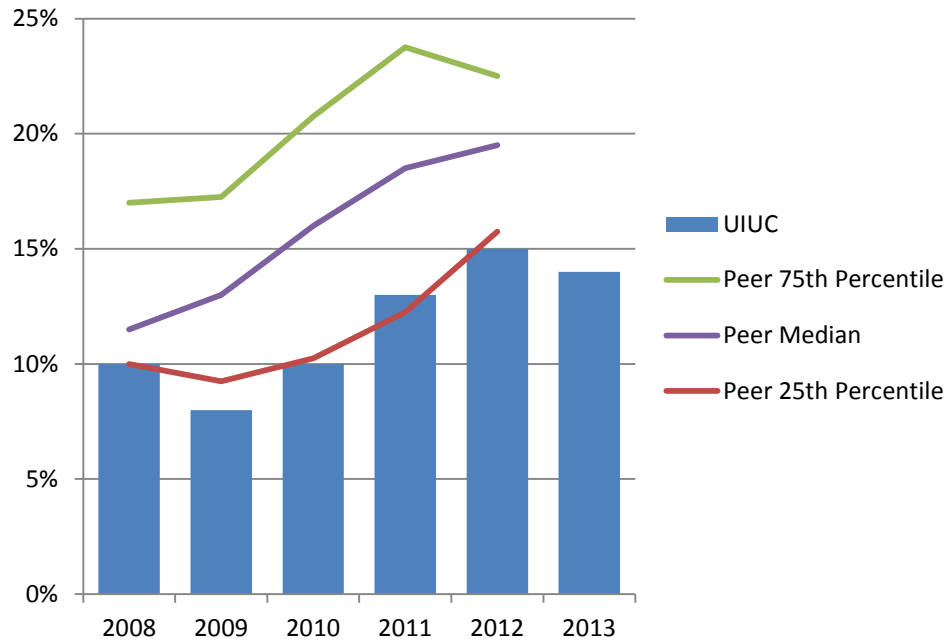
Note: Fewer students at peer institutions submit ACT scores.

University of Illinois at Urbana-Champaign and Peer Institutions First-Time Transfers Enrollment Fall 2008 – Fall 2013

Institution	2008	2009	2010	2011	2012	2013
University of Illinois at Urbana-Champaign	1,183	1,195	1,168	1,398	1,350	1,343
University of California - Berkeley	2,012	2,199	2,195	2,336	2,182	
University of California - Los Angeles	3,219	3,234	3,228	3,116	3,173	
University of California - San Diego	1,858	1,931	2,567	2,795	2,228	
University of Michigan - Ann Arbor	759	870	928	874	905	
University of North Carolina - Chapel Hill	783	778	922	791	845	
University of Texas - Austin	2,270	2,457	2,452	2,492	2,579	
University of Virginia	588	641	631	621	599	
University of Washington	1,492	1,677	1,623	2,001	1,774	
University of Wisconsin-Madison	1,238	1,187	1,304	1,326	1,227	

Data Source: IPEDS Data Center.

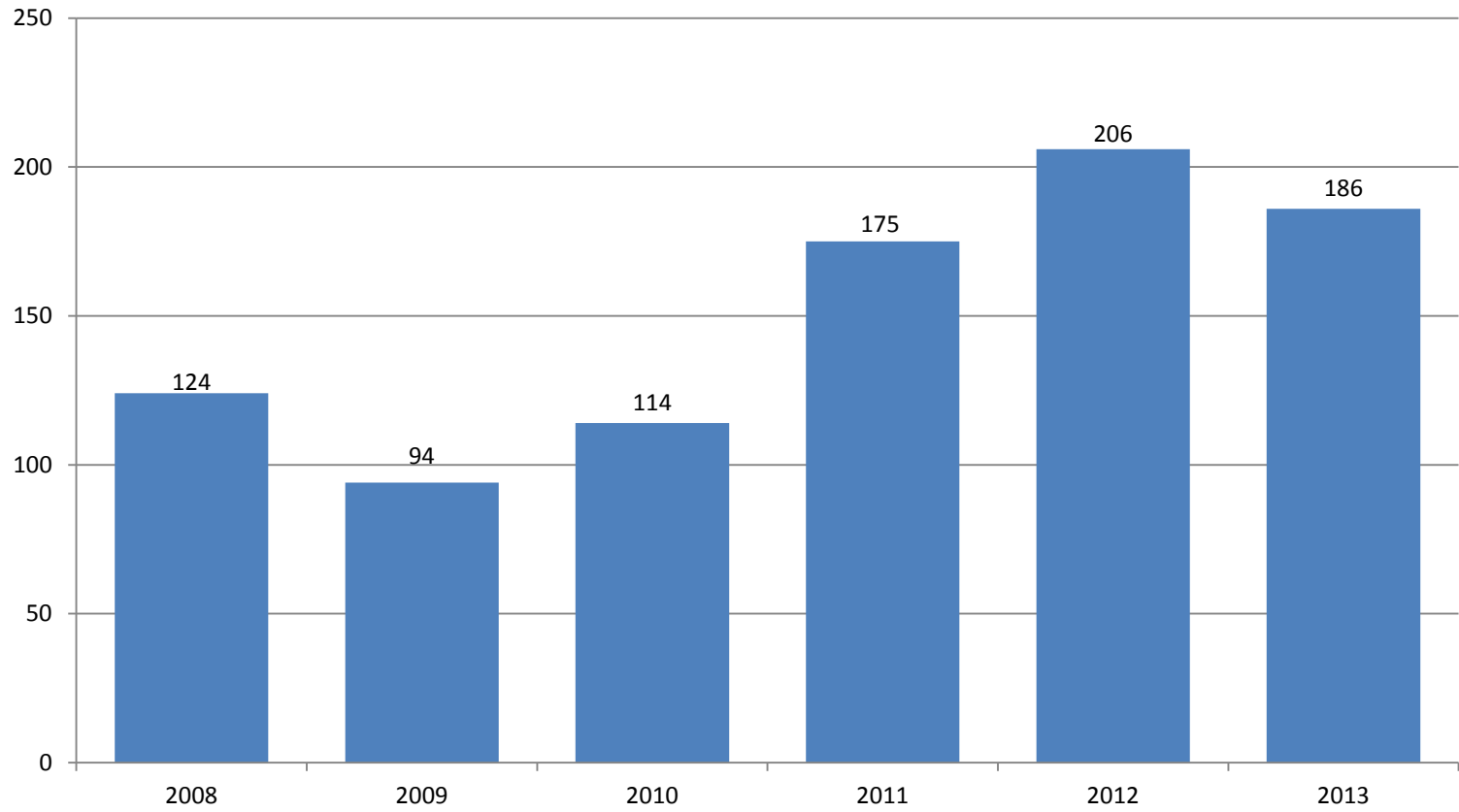
Percent First-Time Transfers from Underrepresented* Groups Fall 2008 – Fall 2013



The percent of first-time transfers from underrepresented groups at the University of Illinois at Urbana-Champaign is lower than its peer median.

* Includes Black, Hispanic, American Indian, Native Hawaiian/Other Pacific Islander, and multi-racial students. Fall 2012 peer data not available.

Number of First-Time Transfers from Underrepresented* Groups Fall 2008 – Fall 2013



* Includes Black, Hispanic, American Indian, Native Hawaiian/Other Pacific Islander, and multi-racial students.

Admissions, Student Qualifications and Transfer Enrollments: Goals



- Campus Goal
- Campus Goal

Action Items



- Campus action item
- ★ Campus action item

- time-frame (1-2 year)
- ★ time-frame (3-5 year)

Questions?

