

# **University of Illinois at Springfield**

## **Dashboard Indicators**

**FINANCIAL INDICATORS AND ADVANCEMENT UPDATES BY:  
UNIVERSITY OFFICE FOR PLANNING AND BUDGETING  
FEBRUARY 10, 2015**

**PRESENTED BY:  
CHANCELLOR SUSAN J. KOCH  
MARCH 12, 2015**

# Peer Group



## **University of Illinois at Springfield**

Auburn University-Montgomery (AL)

Clark University\* (Worcester, MA)

College of Charleston (SC)

Georgia College and State University (Milledgeville, GA)

Iona College\* (New Rochelle, NY)

Lake Superior State University (Sault Ste. Marie, MI)

Marist College\* (Poughkeepsie, NY)

Northern Michigan University (Marquette, MI)

Shippensburg University of Pennsylvania

State University of New York at Brockport

Trinity University (San Antonio, TX)\*

Union College (Schenectady, NY)\*

University of South Dakota

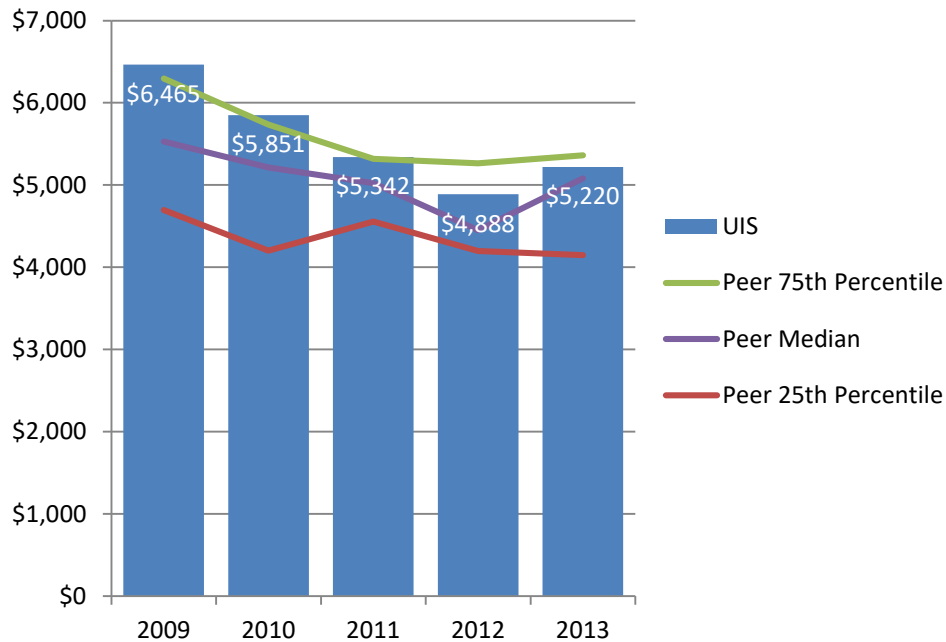
University of Wisconsin-Green Bay

\* Private Institution

# Financial Indicators



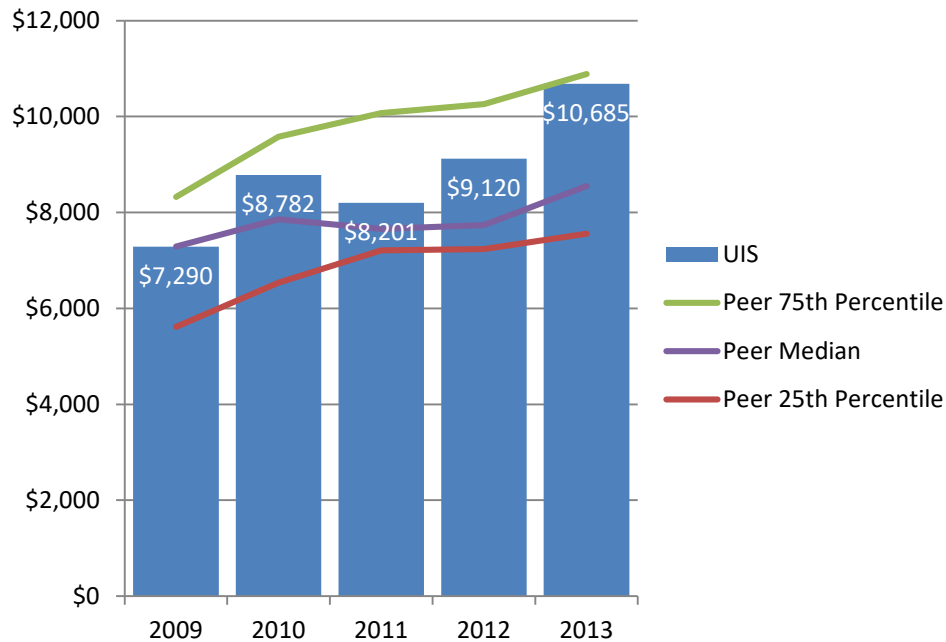
# State Appropriations per FTE Enrollment FY 2009 – FY 2013



University of Illinois at Springfield receives more state support per student than the median amount for its public university peers.

Note: Does not include any allocation of University Administration expenses. Excludes Clark University, Iona College, Marist College, Trinity University, and Union College due to lack of available data.

# Instructional Expenses per FTE Enrollment FY 2009 – FY 2013



Instructional expenses per student at the University of Illinois at Springfield is higher than its peer median.

Note: Does not include any allocation of University Administration expenses.

# Financial Indicators: Goals



- Campus goal
- Campus goal

# Action Items



- Campus action item
- ★ Campus action item

- time-frame (1-2 year)
- ★ time-frame (3-5 year)

# Advancement Peer Group



## **University of Illinois at Springfield**

Georgia College and State University (Milledgeville, GA)

Northern Michigan University (Marquette, MI)

Shippensburg University of Pennsylvania

State University of New York at Brockport

Truman State University

University of Nebraska at Kearney

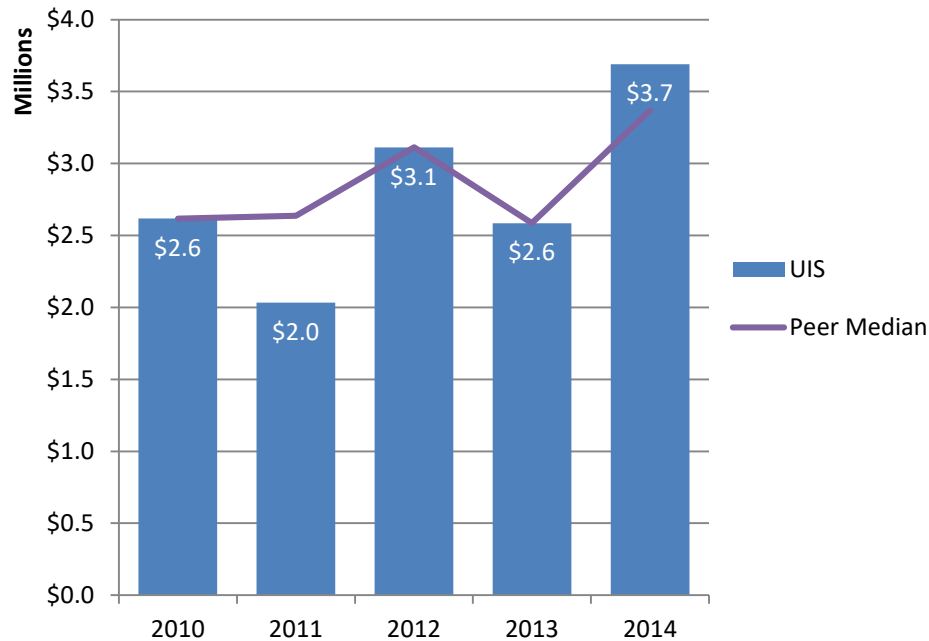
University of Wisconsin-Stevens Point



# Advancement



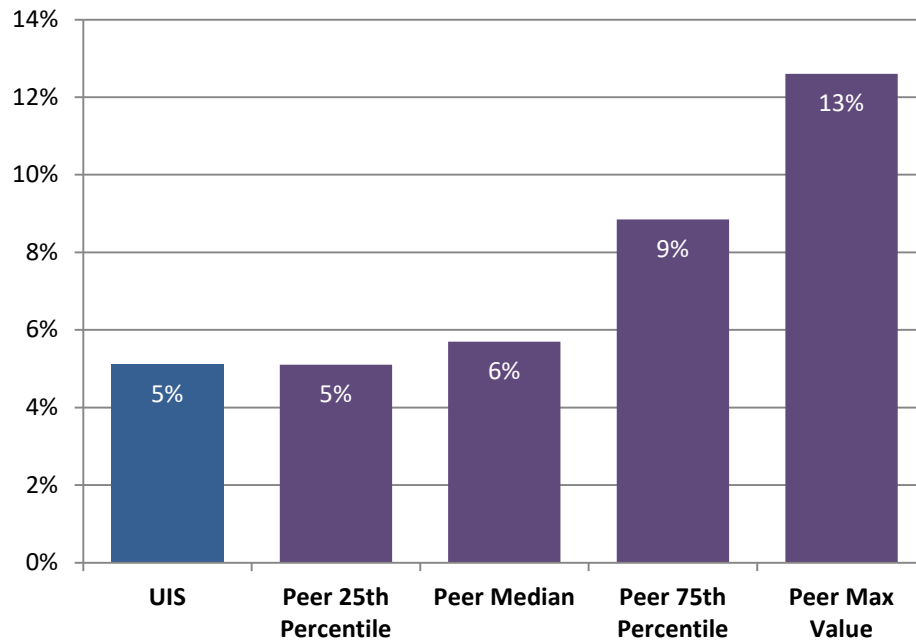
# Gift Deferred at Face Value FY 2010 – FY 2014



Gift income at the University of Illinois at Springfield is at par or below the peer median.

Note: UIS Advancement Peer Group. Excludes Northern Michigan University-Marquette, University of Nebraska at Kearney, and University of Wisconsin-Stevens Point due to lack of available data.

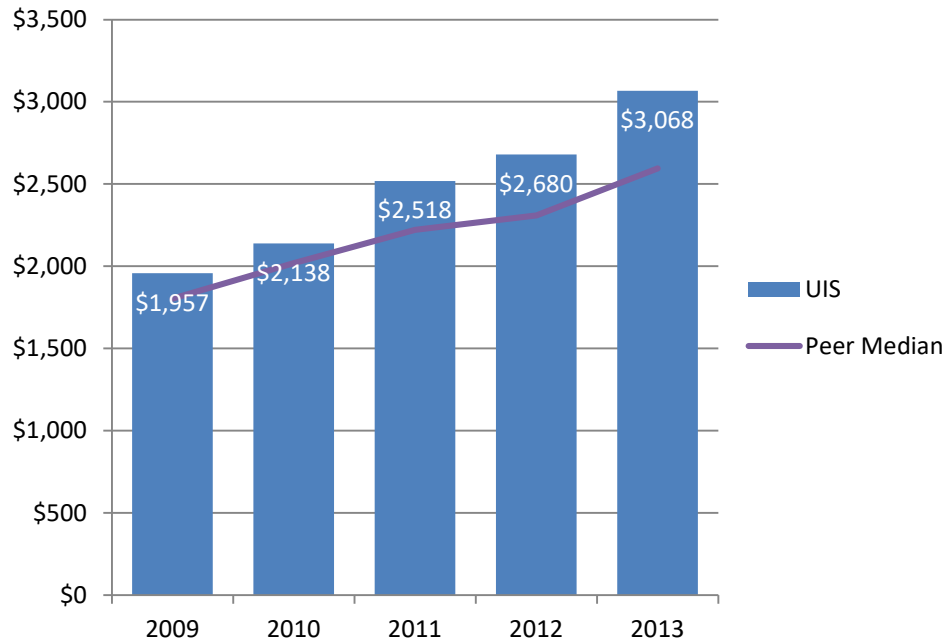
# Annual Giving Rate AY 2011 – AY 2012



University of Illinois at Springfield has a lower percent of alumni donating money than its peer median.

Note: Peer data from US News & World Report, 2015 Edition. Annual giving rate is a two year average.

# Endowment Assets per FTE Enrollment FY 2009 – FY 2013



University of Illinois at Springfield has a higher endowment per student than its peer median.

Note: UIS Advancement Peer Group.

# Advancement: Goals



- Campus goal
- Campus goal

# Action Items



- Campus action item
- ★ Campus action item

- time-frame (1-2 year)
- ★ time-frame (3-5 year)

# Questions?

