

# FINANCIAL INDICATORS



**UNIVERSITY OF ILLINOIS**

**URBANA-CHAMPAIGN • CHICAGO • SPRINGFIELD**

**BOARD OF TRUSTEES**

**March 7, 2013**

# Federal and State Update

- Federal Budget Sequestration
- Rating Agency Meetings
- FY2012 Compliance Audit Release
- Update on State Legislature
  - Appropriation Hearings
  - Subject Matter Hearings (February 27<sup>th</sup>)
- Pensions
- Search Firm Policy
- Governor's Budget Recommendation

# Governor's FY2014 Budget

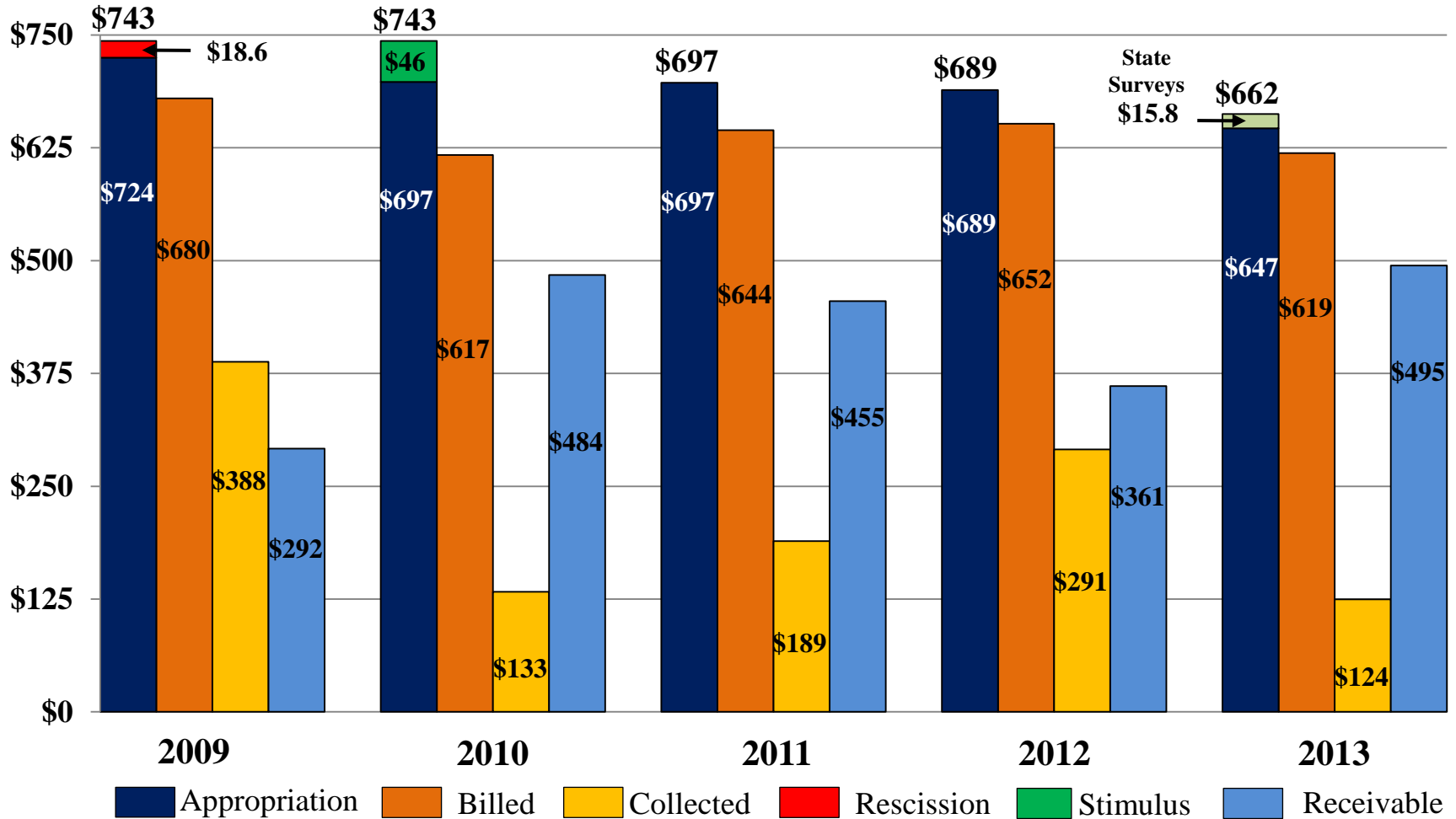
- U of I General Funds **reduced \$32.7M, -4.9%** to \$629.7M
- COGFA/House revenue estimates \$500M lower than the Governor's estimates
- SURS funding at certified amount \$1.51B, \$107M increase
- GOMB recommended no new capital statewide for FY2014  
All continuing projects reappropriated
- COM Rockford (\$500 thousand in FY2013) from the General Professions Dedicated Fund has been eliminated
- MAP recommended at FY2013 level of \$371.3M

# State Appropriation Revenue

## Unrestricted Funds

Billings and Collections through February 28, 2013

Dollars in Millions



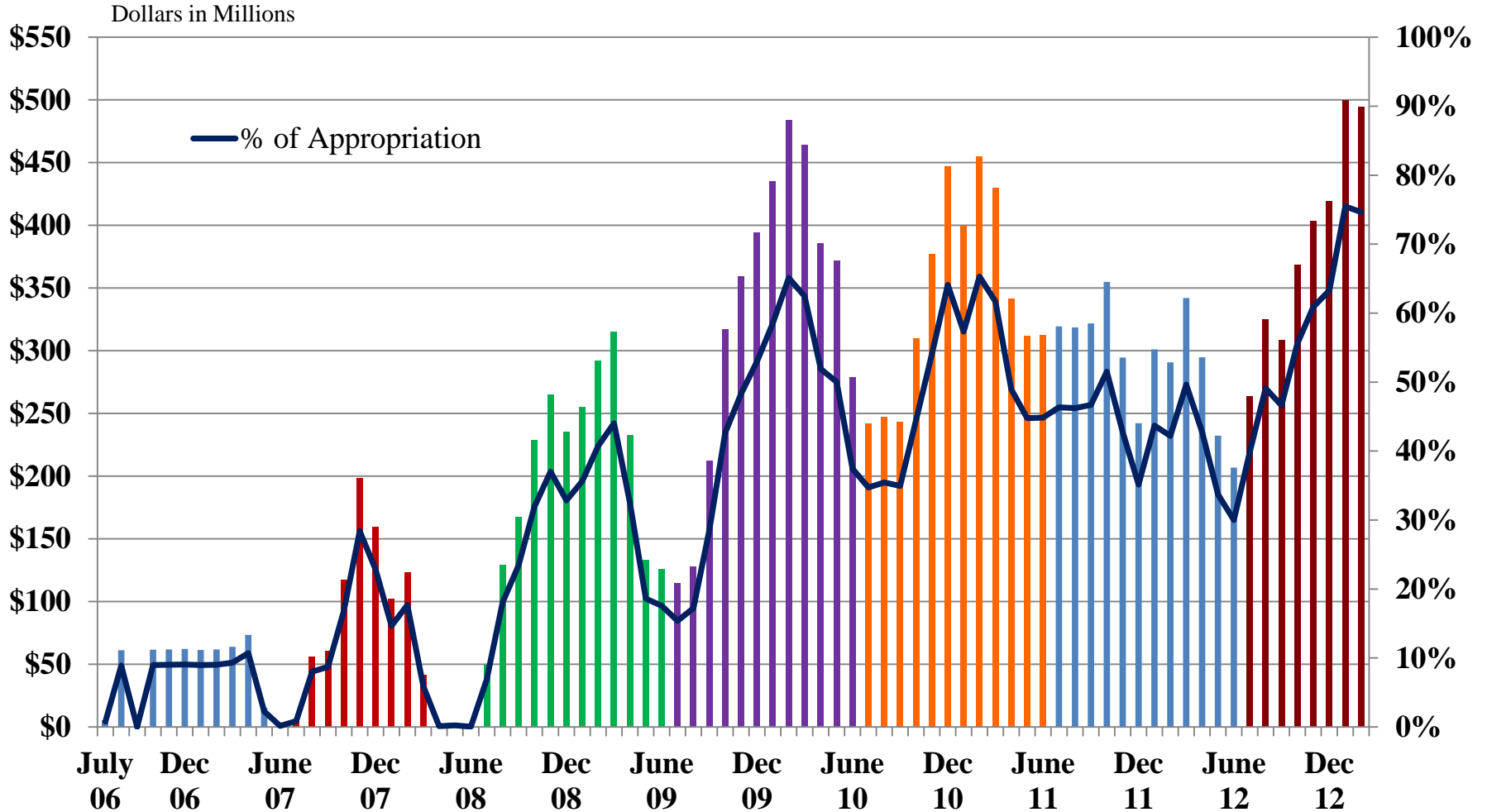
*FY09 appropriation includes \$18.6 million rescission.*

*FY10 appropriation includes \$45.5 million of federal stimulus funding and restoration of FY09 rescission.*

# UI Month End GRF Receivable & Percent of State Budget

Fiscal Year 2007 through Fiscal Year 2013

As of February 28, 2013



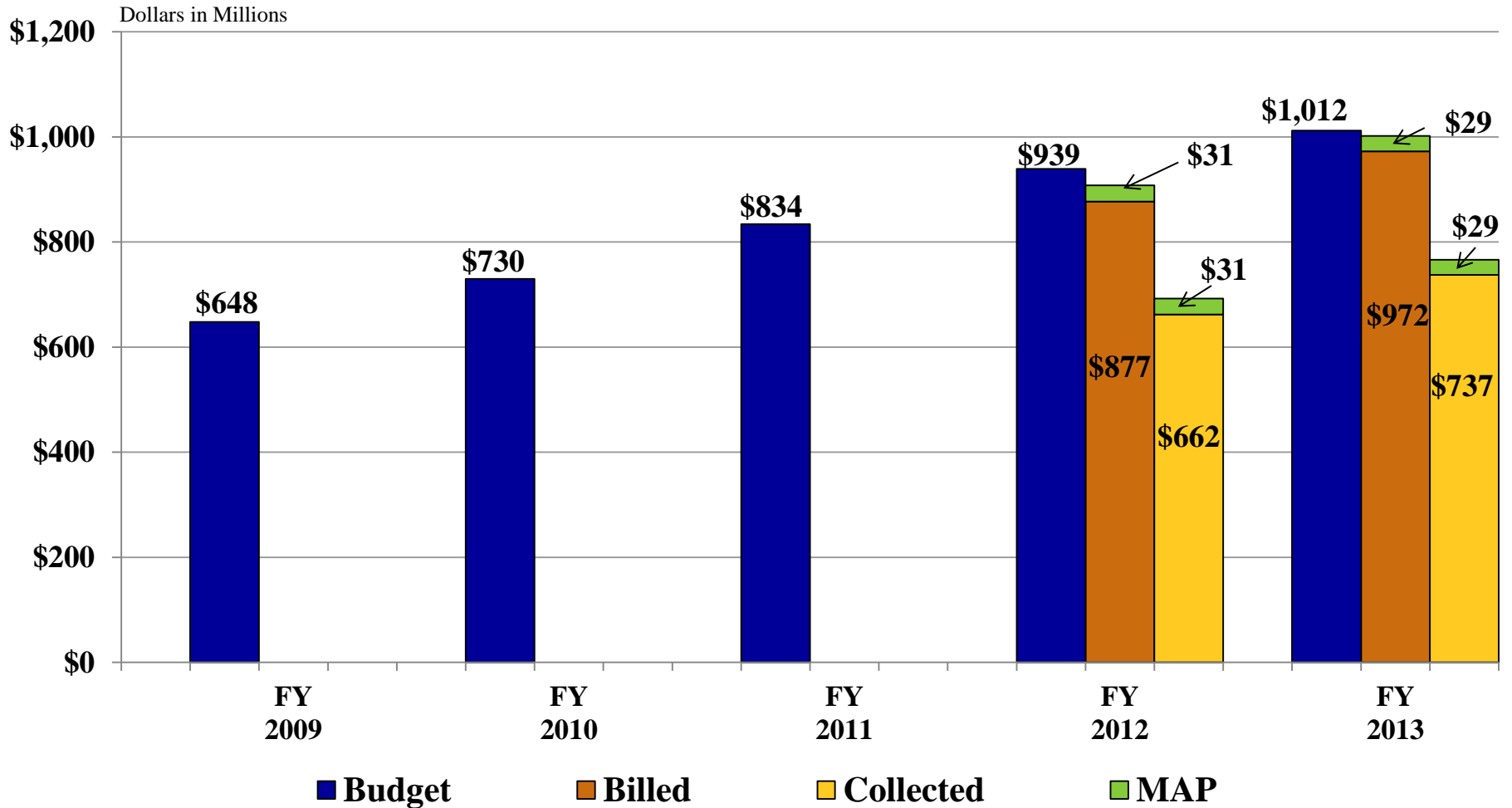
Receivables as of June 30<sup>th</sup> for each of the following fiscal years were: 2009 (\$125.9M), 2010 (\$278.5M), 2011 (\$312.7M), 2012 (\$206.7M).

# Income Fund (Tuition) Revenue

## Unrestricted Funds

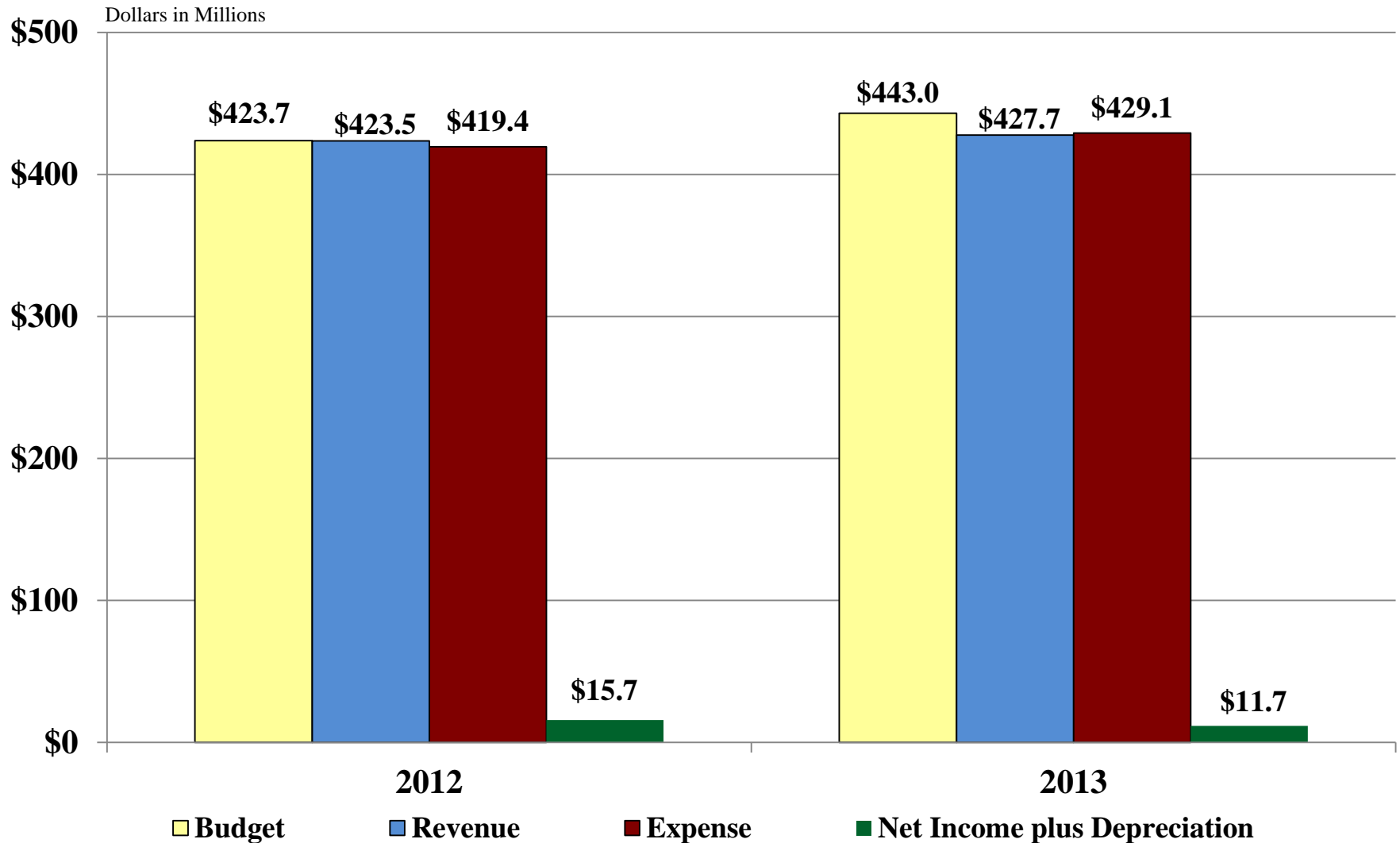
Fiscal Years 2009 – 2013

Collections and Billed through January 31<sup>th</sup> of Fiscal Years 2012 & 2013



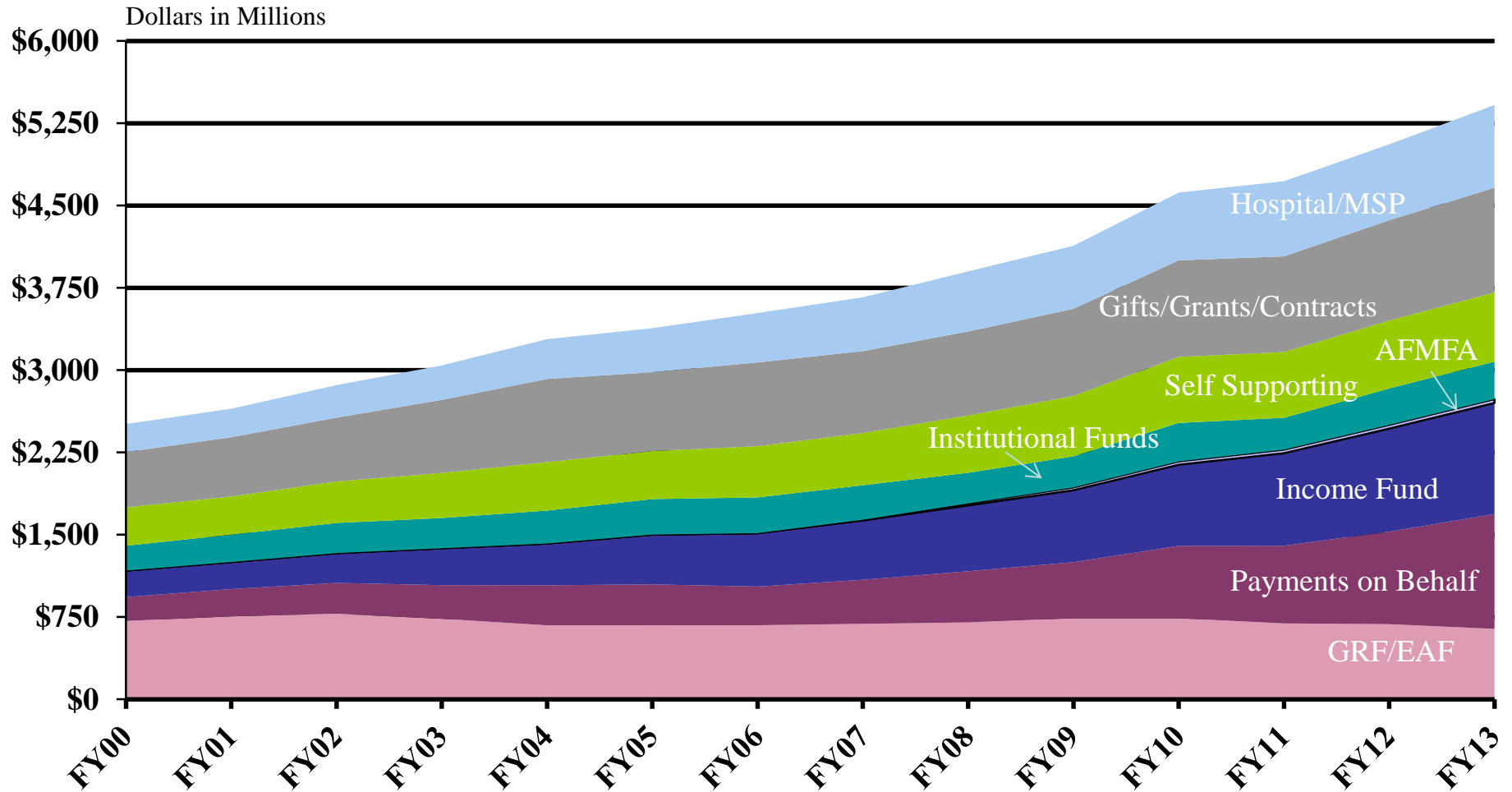
# Hospital Revenue/Expense/Net Income

Fiscal Year 2012 vs. Fiscal Year 2013 through January 31, 2013



# Diversity of Revenue

## FY 2000 – FY 2013

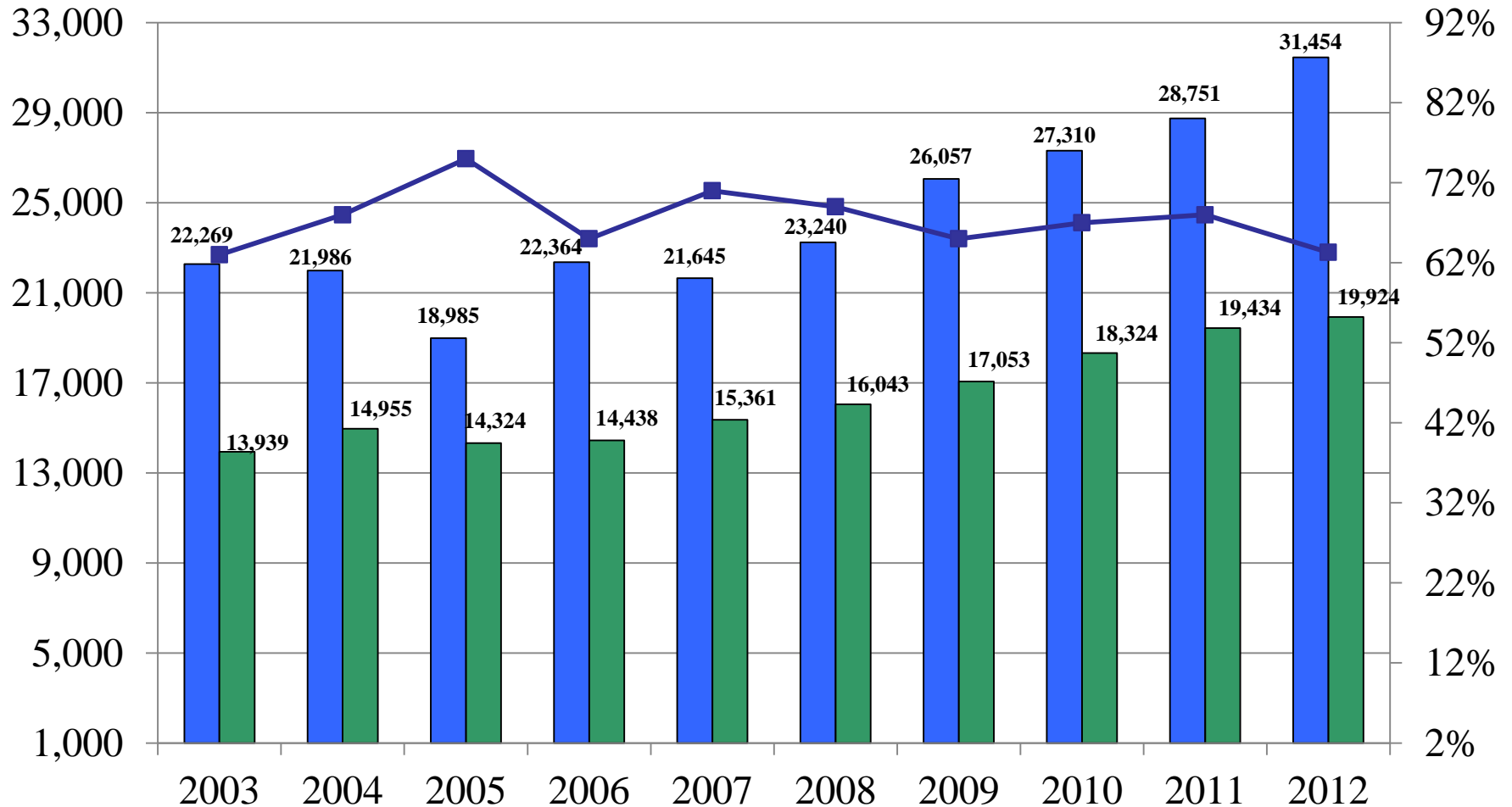


Sources: Budget Summary for Operations, state payments on behalf, and RAMP. Waivers excluded. FY04 Payments on Behalf excludes one time proceeds from bond sale.

GRF for FY02 – FY13 exclude \$24.9 million for Health Insurance, Payments on Behalf adjusted to include the \$24.9 million.



# Urbana First-time Freshmen Demand Trends

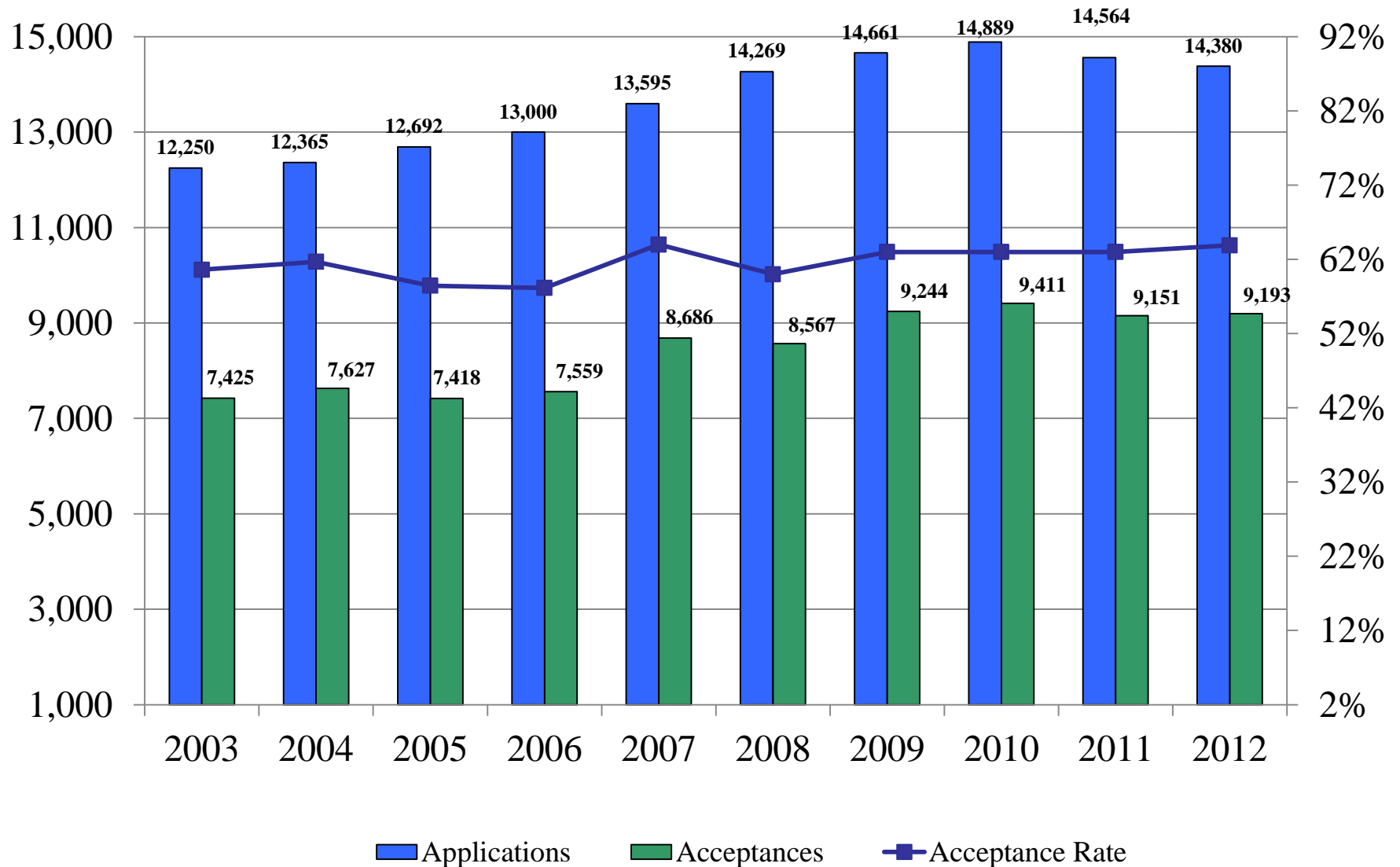


■ Applications   
 ■ Acceptances   
 ■ Acceptance Rate

Note: Beginning in Fall 2004, UIC and UIUC counted multiple applications from one applicant as one application.

Source: The University Office for Planning and Budgeting

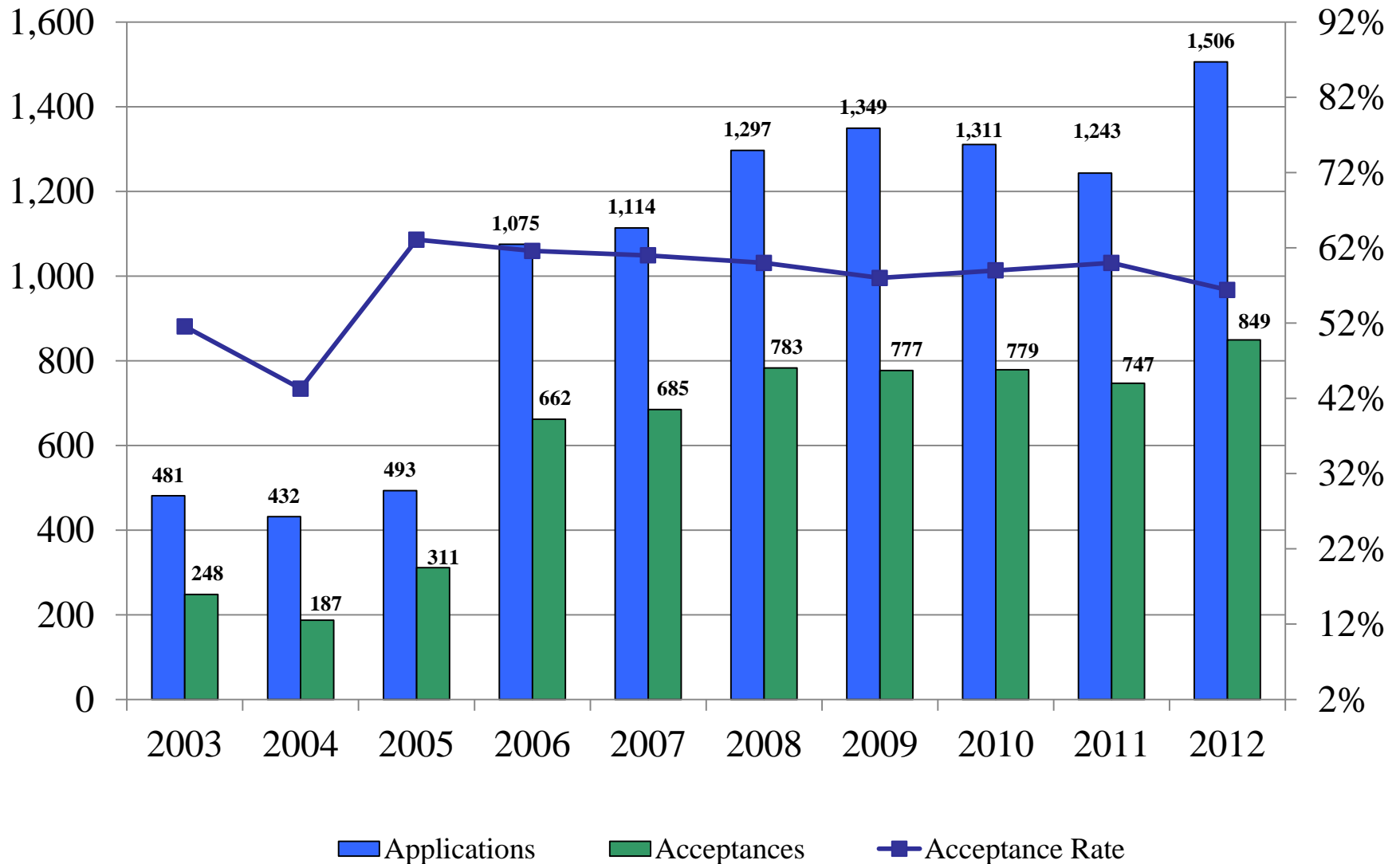
# Chicago First-time Freshmen Demand Trends



Note: Beginning in Fall 2004, UIC and UIUC counted multiple applications from one applicant as one application.

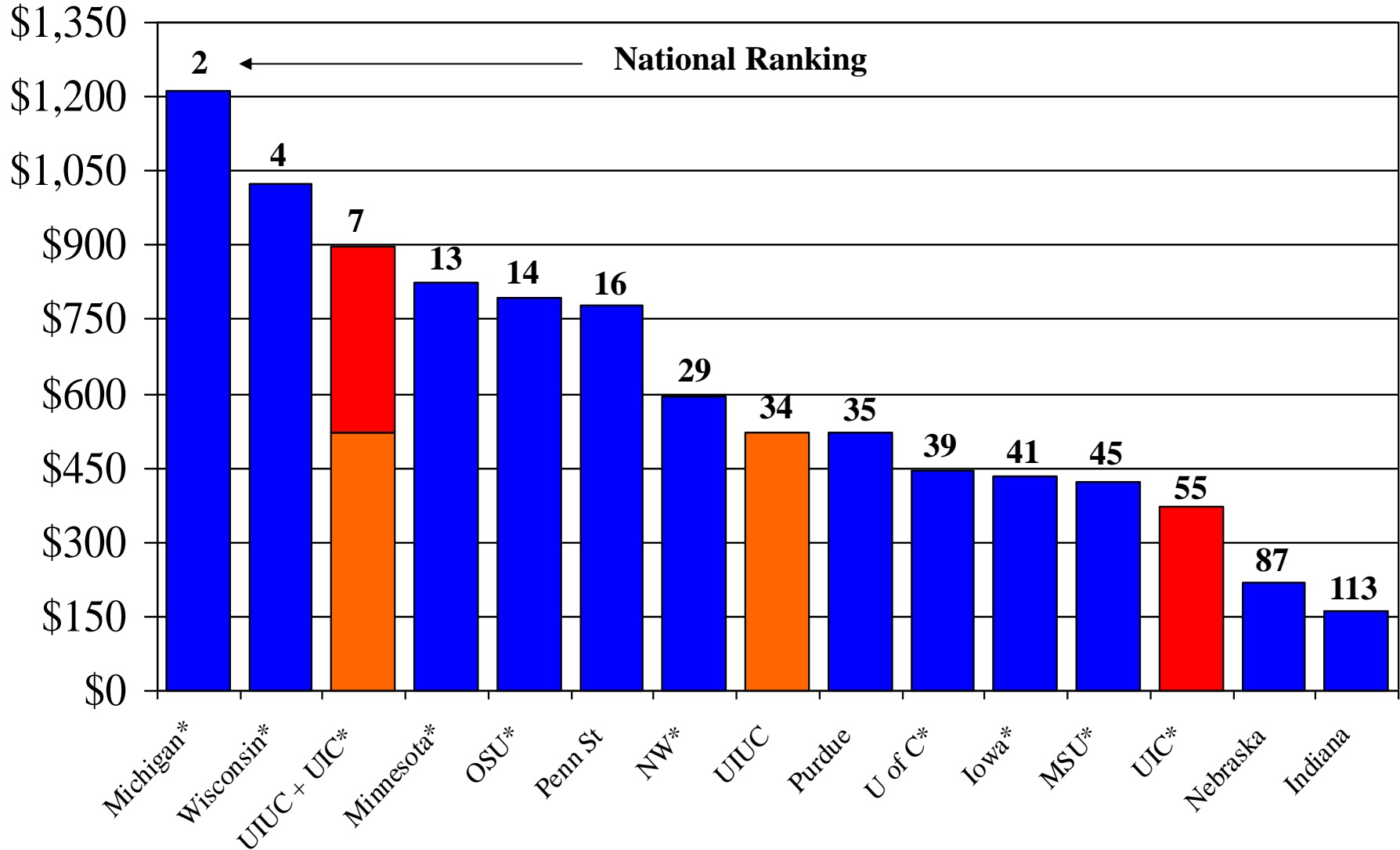
Source: The University Office for Planning and Budgeting

# Springfield First-time Freshmen Demand Trends



# Total R & D Expenditures FY 2011

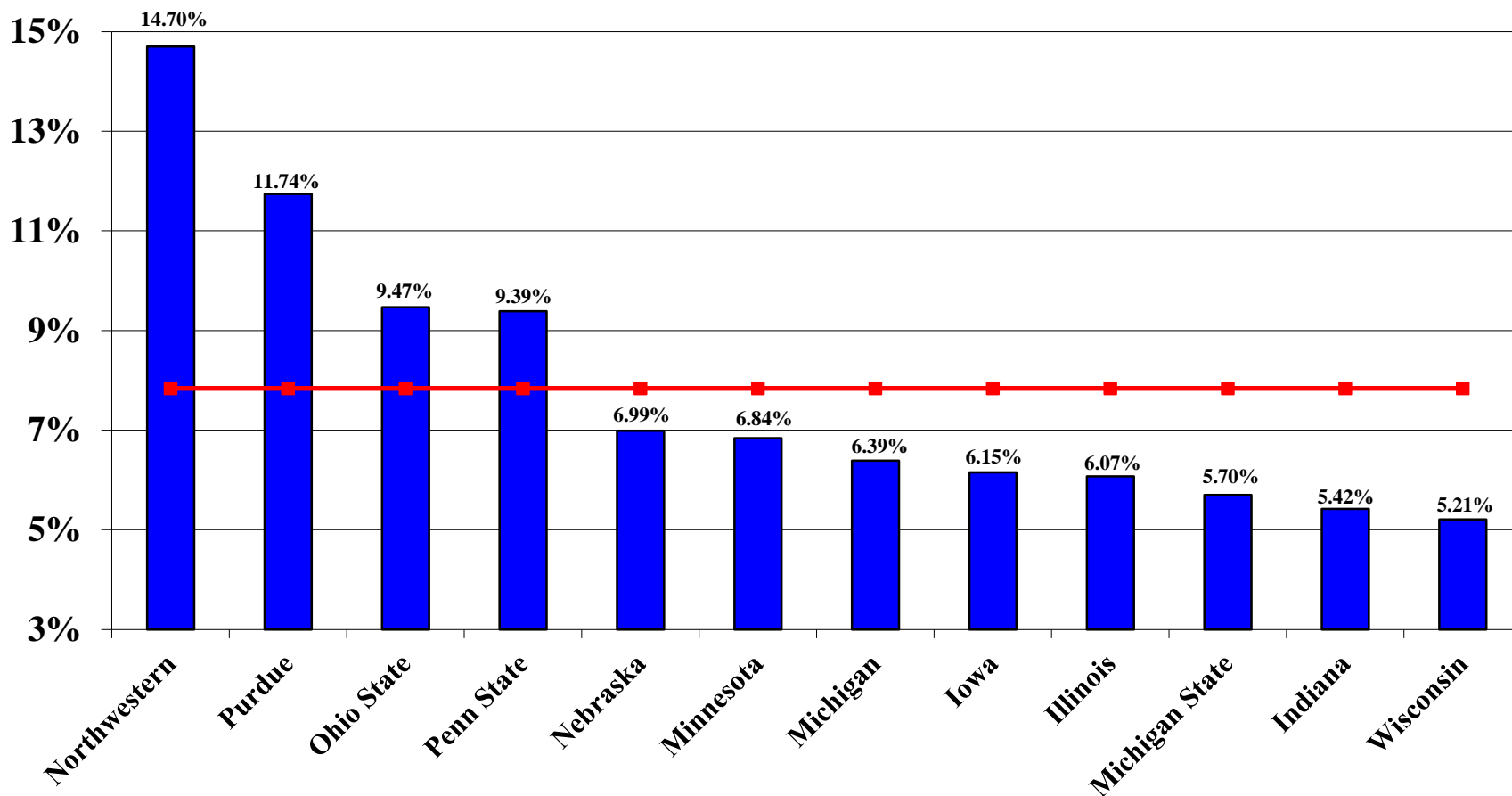
(Dollars in Millions)



Source: NSF; S&E Fields Only.

\* Have medical colleges.

# Big Ten Universities Total Systems Institutional Support as a % of Total Expenditures FY 2012 Excluding Hospital Enterprises

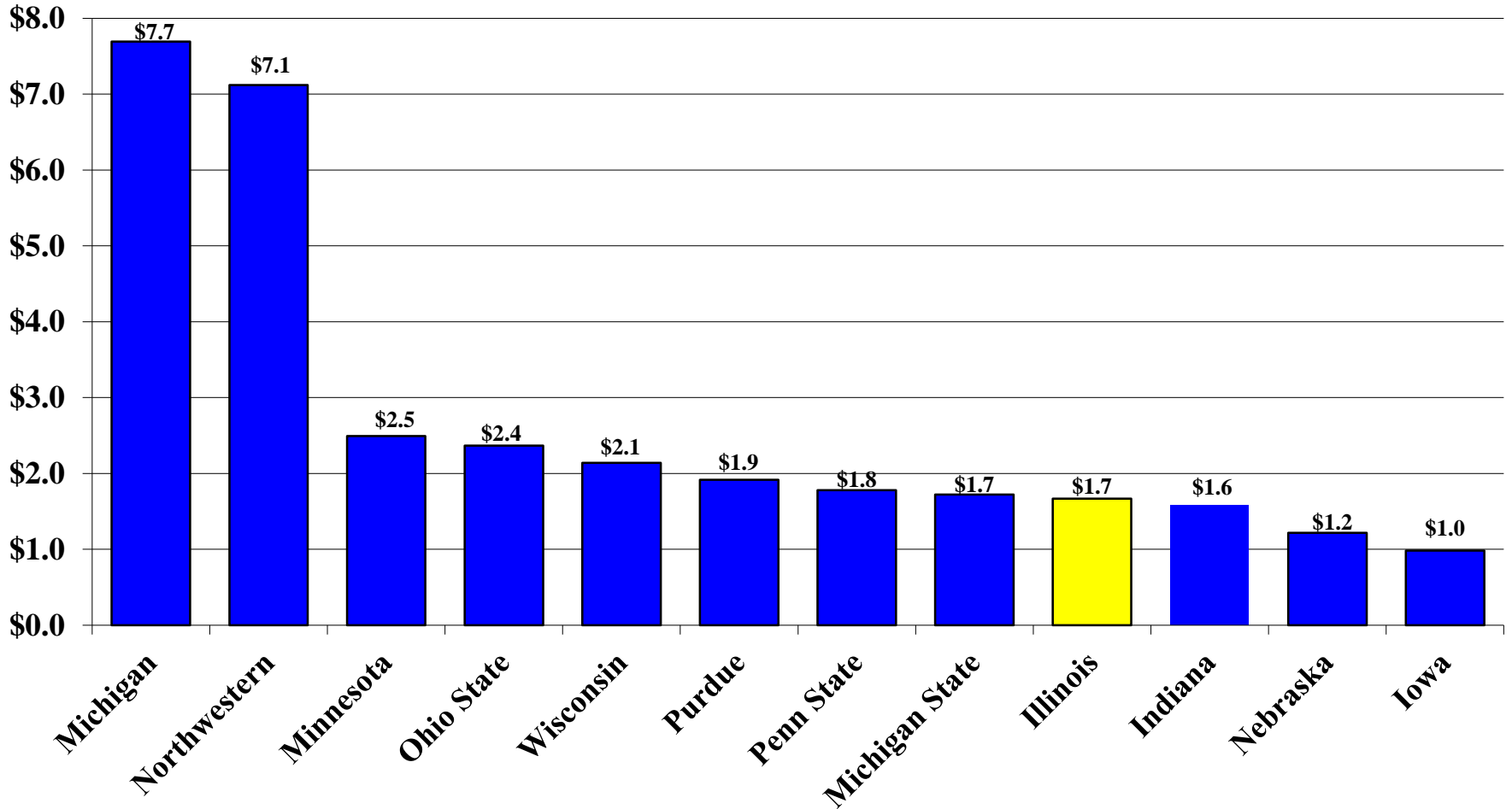


Note: Total Expenditures are Operating Expenditures less Depreciation and Hospital/Medical  
Source: FY 2012 Annual Financial Reports

# Big Ten University Endowments

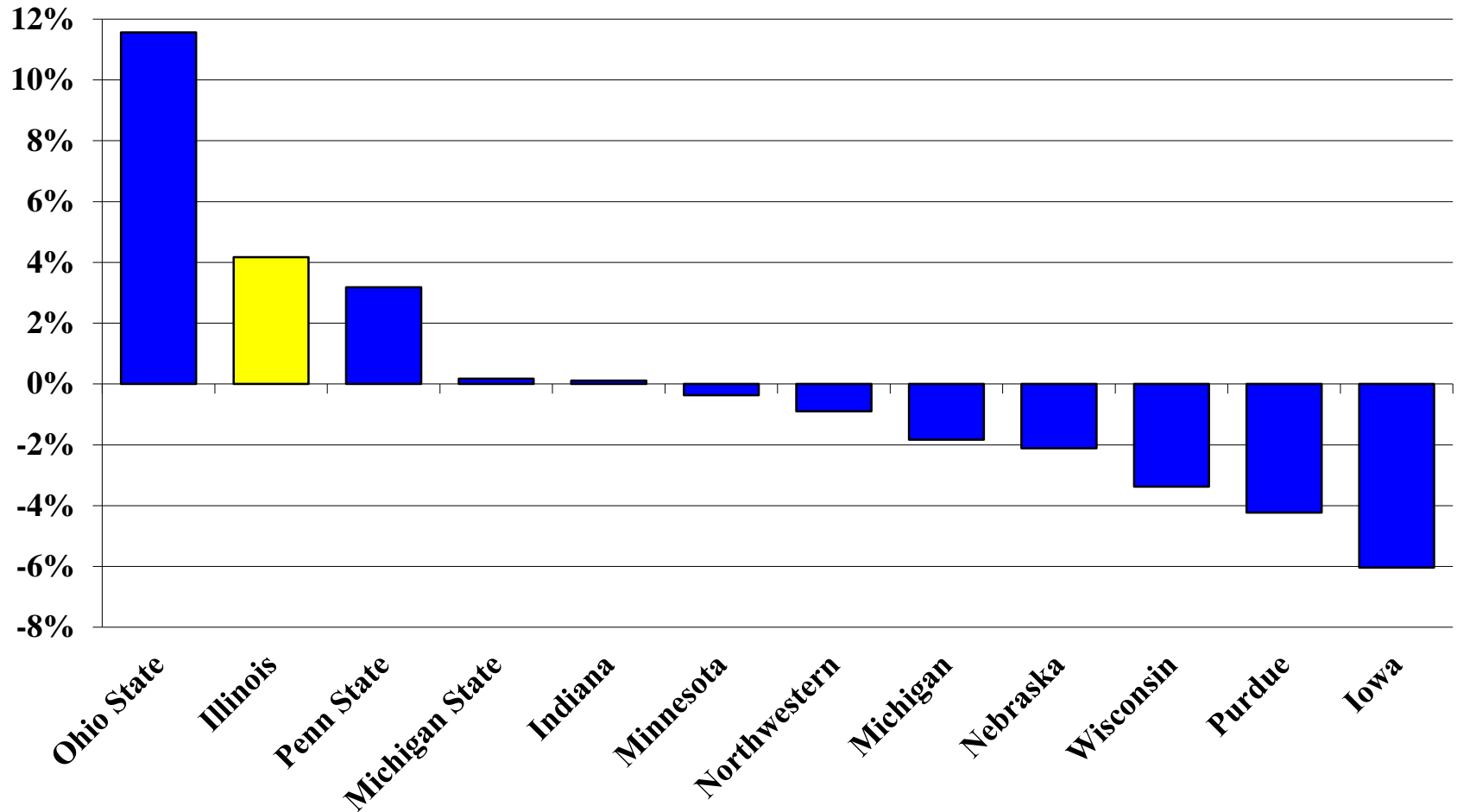
## FY 2012

(Dollars in Billions)



Source: NACUBO-Commonfund Study of Endowments FY 2012.

# Big Ten University Endowments Percentage Growth from 2011 – 2012



Source: NACUBO-Commonfund Study of Endowments FY 2012.



