

University of Illinois at Springfield

Performance Metrics

**ADMISSIONS, STUDENT QUALIFICATIONS, AND TRANSFER ENROLLMENTS
UPDATES BY:**

**UNIVERSITY OFFICE FOR PLANNING AND BUDGETING
APRIL 5, 2019**

**REPORTED BY:
CHANCELLOR SUSAN J. KOCH
MAY 16, 2019**

Reported to the Board of Trustees
May 16, 2019

Peer Groups



University of Illinois at Springfield

Clarion University of Pennsylvania

Emporia State University

Framingham State University

Georgia College and State University

Rutgers University-Camden

University of Baltimore

University of Michigan-Flint

University of Nebraska at Kearney

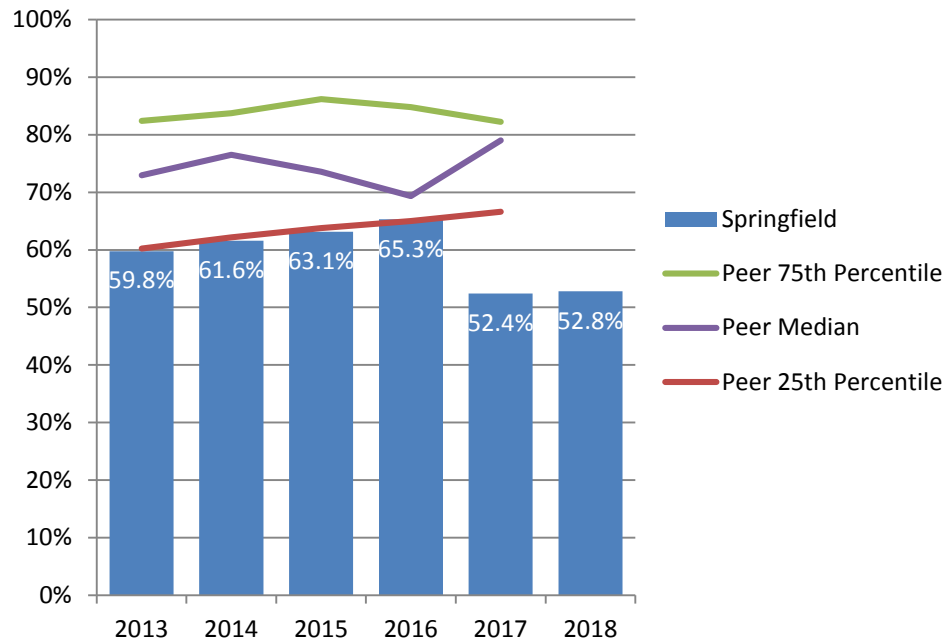
University of Southern Maine

University of Texas at Tyler

Admissions, Student Qualifications, and Transfer Enrollments



Percent of First-Time Freshmen Applicants Admitted* Fall 2013 – Fall 2018

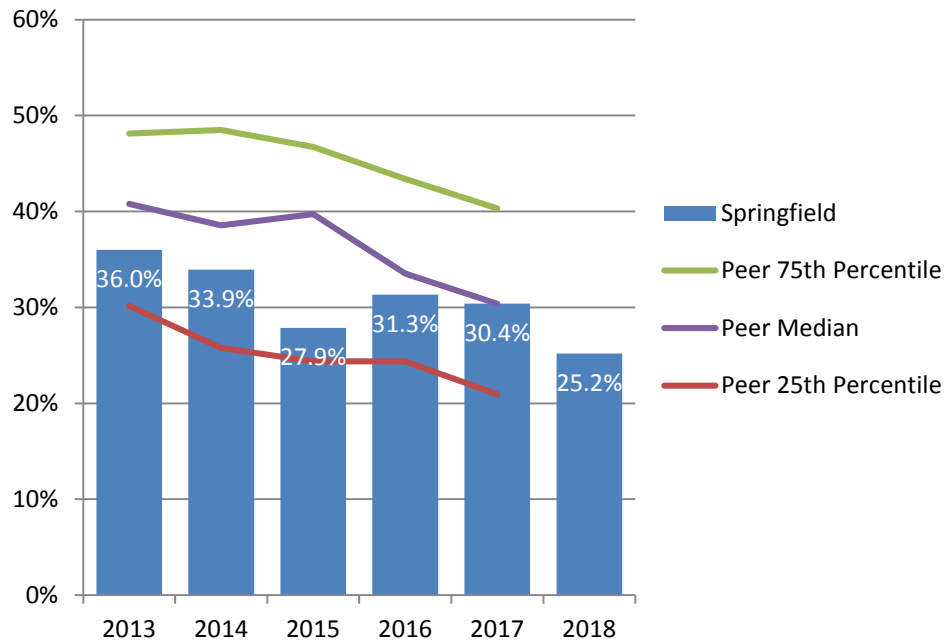


University of Illinois at Springfield admits a lower percent of freshmen applicants compared to the peer median.

* Percent Admitted = Percent of (total admits divided by total applicants).

Percent of First-Time Freshmen Admissions Yield*

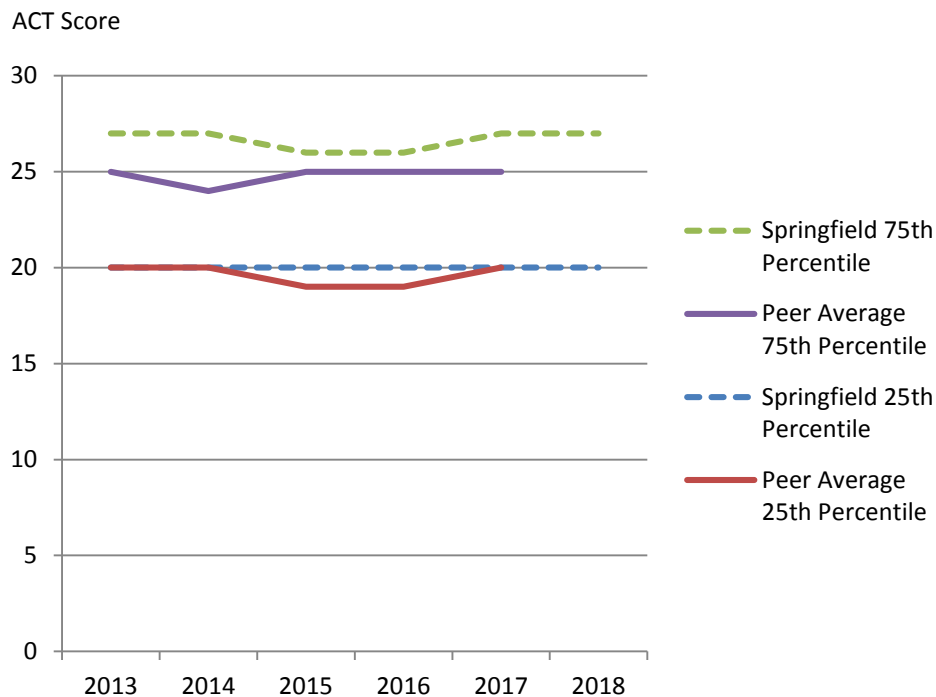
Fall 2013 – Fall 2018



Prior to Fall 2017, University of Illinois at Springfield had an admissions yield lower than its peer median.

* Admissions Yield = Percent of (total enrolled divided by total admits).

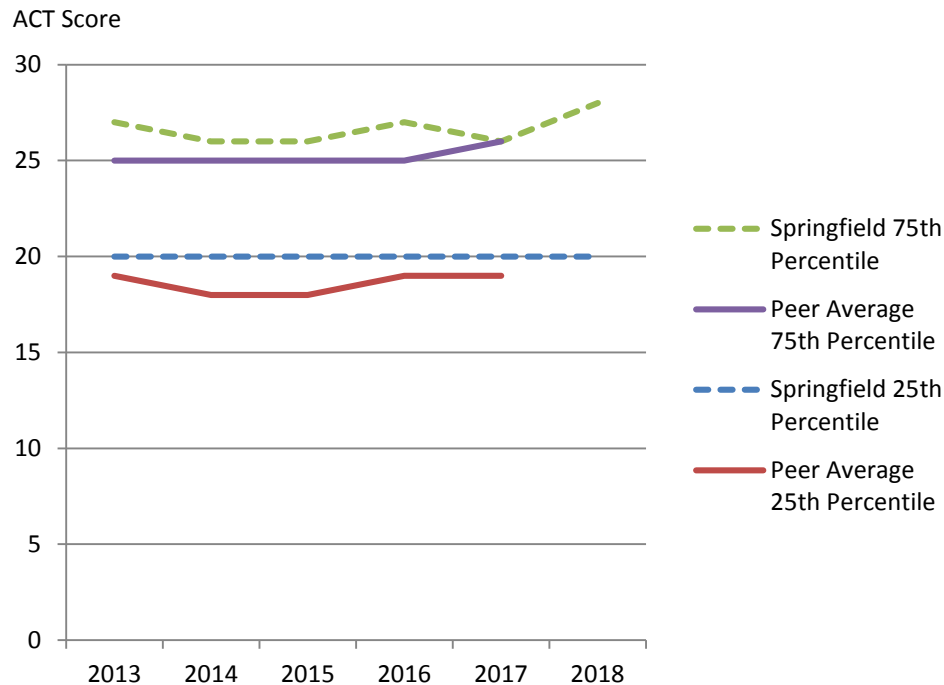
Entering Freshmen ACT Composite Scores 25th and 75th Percentile Fall 2013 – Fall 2018



The 75th percentile ACT composite scores of entering freshmen at the University of Illinois at Springfield are higher than the peer averages; the 25th percentile ACT composite scores are on par with the peer averages.

Note: Fewer students at peer institutions submit ACT scores. Excludes Rutgers University-Camden and University of Baltimore due to lack of available data. The State of Illinois provides funding to Illinois public high schools to administer college entrance exams. In 2016, the State of Illinois changed contractors from ACT to the College Board. This resulted in many more applicants reporting SAT scores to the University of Illinois and less reporting ACT scores. Since many high schools had already paid for students to take the ACT that spring, the transition occurred over several years and was evident in both Fall 2017 and Fall 2018 applications.

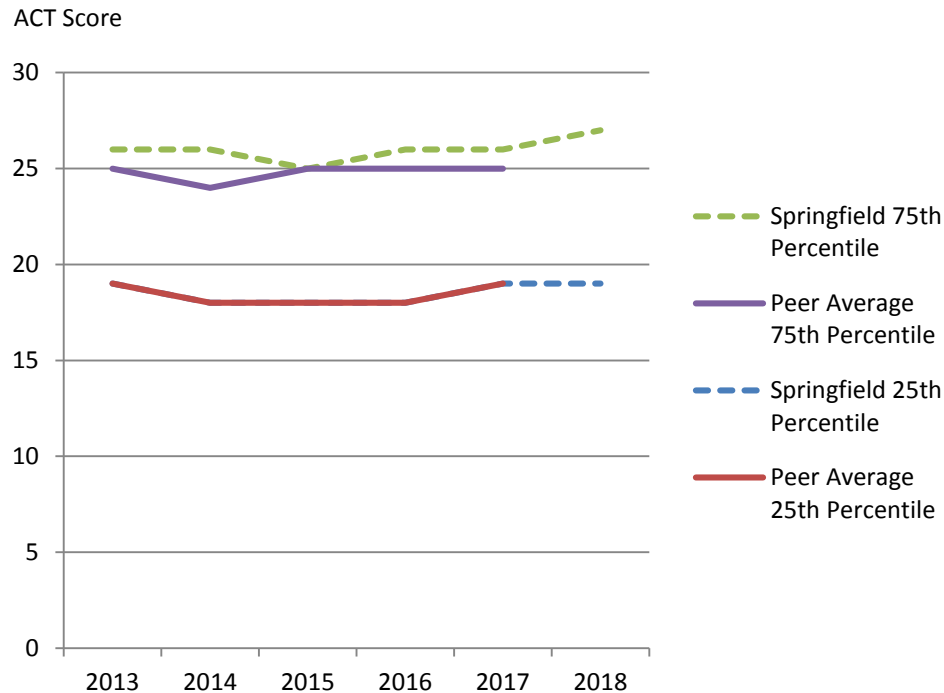
Entering Freshmen ACT English Scores 25th and 75th Percentile Fall 2013 – Fall 2018



ACT English scores of entering freshmen at the University of Illinois at Springfield are higher than the peer averages.

Note: Fewer students at peer institutions submit ACT scores. Excludes Framingham State University, Rutgers University-Camden, and University of Baltimore due to lack of available data. The State of Illinois provides funding to Illinois public high schools to administer college entrance exams. In 2016, the State of Illinois changed contractors from ACT to the College Board. This resulted in many more applicants reporting SAT scores to the University of Illinois and less reporting ACT scores. Since many high schools had already paid for students to take the ACT that spring, the transition occurred over several years and was evident in both Fall 2017 and Fall 2018 applications.

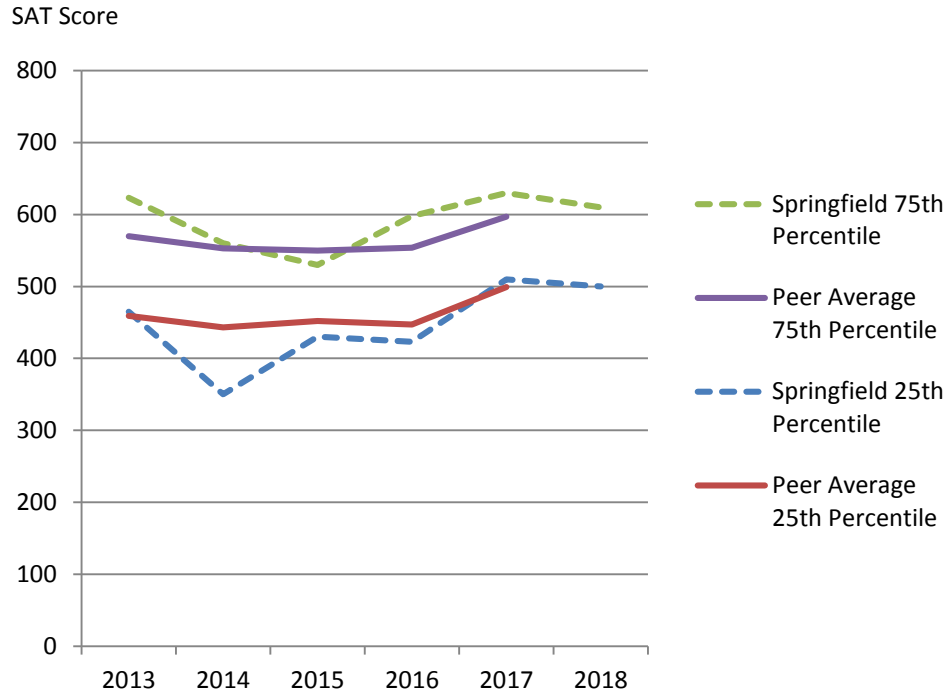
Entering Freshmen ACT Math Scores 25th and 75th Percentile Fall 2013 – Fall 2018



ACT Math scores of entering freshmen at the University of Illinois at Springfield are on par with the peer averages.

Note: Fewer students at peer institutions submit ACT scores. Excludes Framingham State University, Rutgers University-Camden, and University of Baltimore due to lack of available data. The State of Illinois provides funding to Illinois public high schools to administer college entrance exams. In 2016, the State of Illinois changed contractors from ACT to the College Board. This resulted in many more applicants reporting SAT scores to the University of Illinois and less reporting ACT scores. Since many high schools had already paid for students to take the ACT that spring, the transition occurred over several years and was evident in both Fall 2017 and Fall 2018 applications.

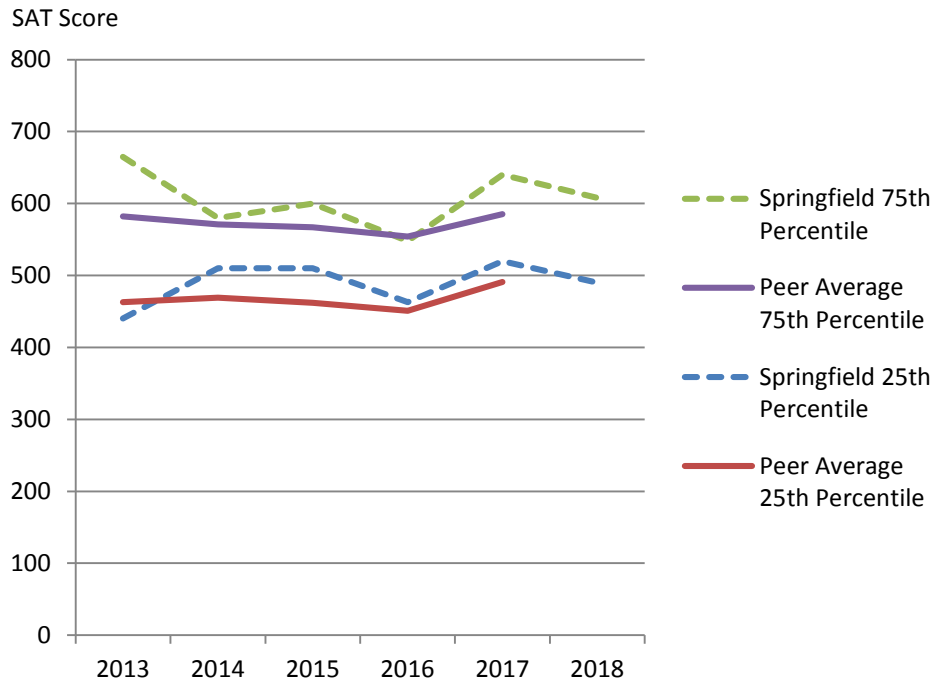
Entering Freshmen SAT Evidence-Based Reading and Writing Scores 25th and 75th Percentile Fall 2013 – Fall 2018



The 75th percentile SAT Critical Reading scores of entering freshmen at the University of Illinois at Springfield are higher than the peer averages; the 25th percentile SAT Critical Reading scores are below the peer averages.

Note: Fewer students at peer institutions submit ACT scores. Excludes Emporia State University due to lack of available data. The State of Illinois provides funding to Illinois public high schools to administer college entrance exams. In 2016, the State of Illinois changed contractors from ACT to the College Board. This resulted in many more applicants reporting SAT scores to the University of Illinois and less reporting ACT scores. Since many high schools had already paid for students to take the ACT that spring, the transition occurred over several years and was evident in both Fall 2017 and Fall 2018 applications. Critical Reading test name was changed to the Evidence-based Reading and Writing test after 2017.

Entering Freshmen SAT Math Scores 25th and 75th Percentile Fall 2013 – Fall 2018



SAT Math scores of entering freshmen at the University of Illinois at Springfield are higher than the peer averages.

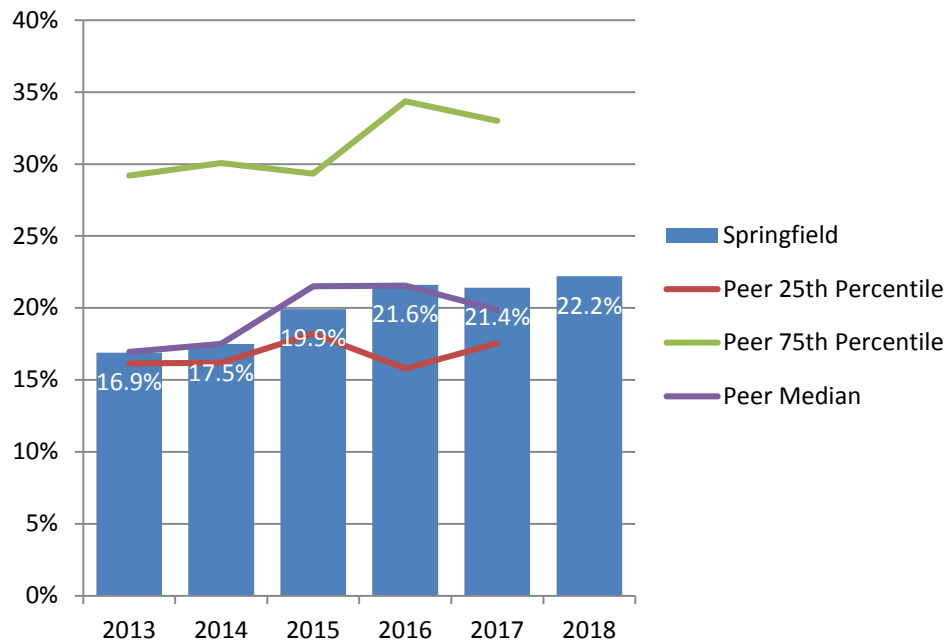
Note: Fewer students at peer institutions submit ACT scores. Excludes Emporia State University due to lack of available data. The State of Illinois provides funding to Illinois public high schools to administer college entrance exams. In 2016, the State of Illinois changed contractors from ACT to the College Board. This resulted in many more applicants reporting SAT scores to the University of Illinois and less reporting ACT scores. Since many high schools had already paid for students to take the ACT that spring, the transition occurred over several years and was evident in both Fall 2017 and Fall 2018 applications.

First-Time Transfers Enrolled Fall 2013 – Fall 2018

Institution	2013	2014	2015	2016	2017	2018
University of Illinois at Springfield	620	594	547	588	528	483
Clarion University of Pennsylvania	475	433	362	312	350	
Emporia State University	387	387	357	350	349	
Framingham State University	413	414	384	379	423	
Georgia College and State University	355	349	307	345	313	
Rutgers University-Camden	837	866	927	823	866	
University of Baltimore	592	645	642	558	489	
University of Michigan-Flint	810	796	752	696	678	
University of Nebraska at Kearney	342	307	330	306	282	
University of Southern Maine	817	792	820	768	748	
University of Texas at Tyler	820	807	983	1,031	1,137	

Data Source: IPEDS Data Center.

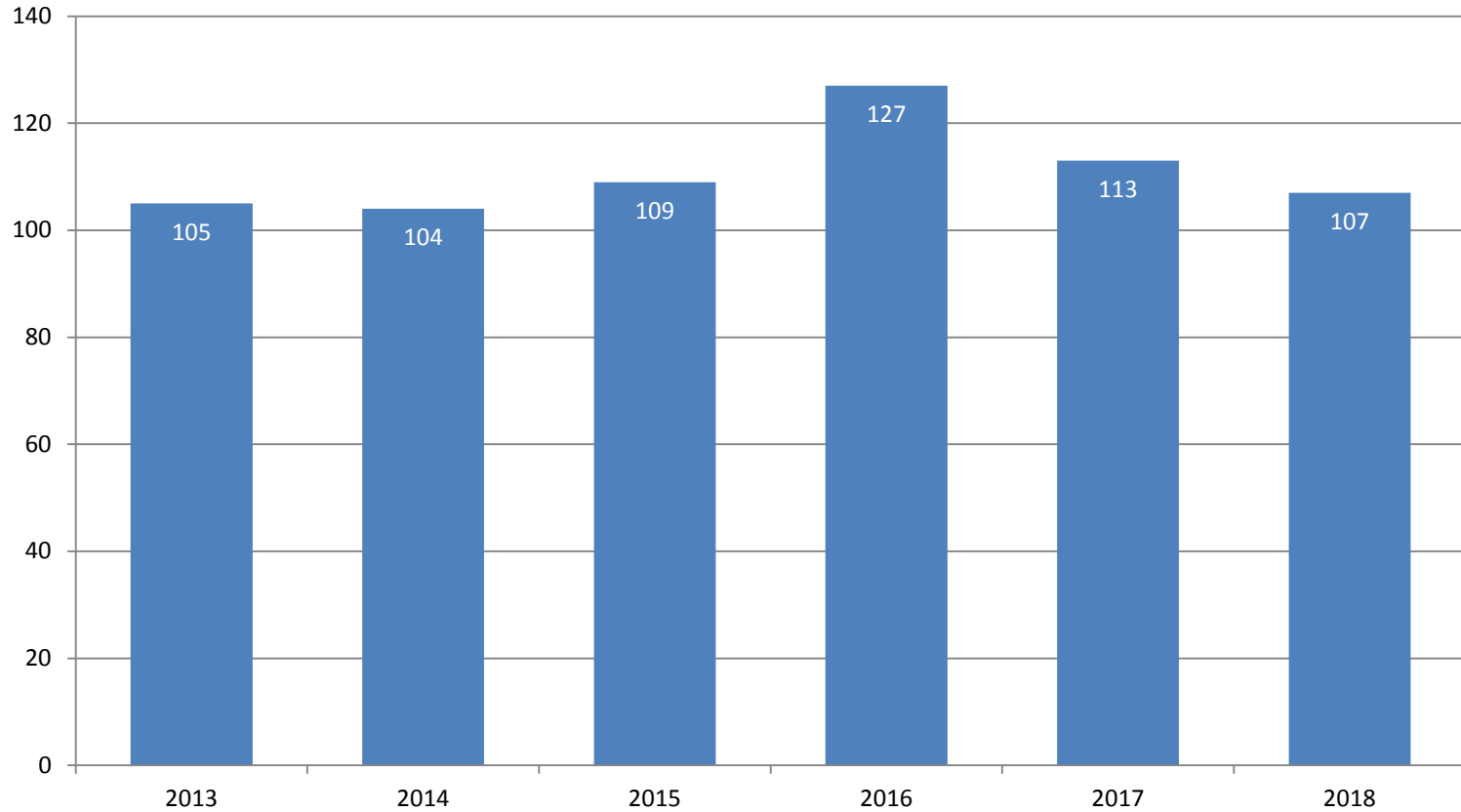
Percent of First-Time Transfers from Underrepresented* Groups Fall 2013 – Fall 2018



The percent of first-time transfers from underrepresented groups at the University of Illinois at Springfield is on par with the peer median.

* Includes American Indian, Black, Hispanic, Native Hawaiian/Other Pacific Islander, and multi-racial students.

Number of First-Time Transfers from Underrepresented* Groups Fall 2013 – Fall 2018



* Includes American Indian, Black, Hispanic, Native Hawaiian/Other Pacific Islander, and multi-racial students.

**University of Illinois
at Springfield
Performance Metric Report
Analysis of Indicators**

**ADMISSIONS, STUDENT QUALIFICATIONS, TRANSFER ENROLLMENTS
UPDATES**

**REPORTED BY:
CHANCELLOR SUSAN J. KOCH
MAY 16, 2019**

Analysis



Areas Meeting or Exceeding Expectations



- Test score data presented here suggests UIS is fulfilling its mission of being an institution that can support students of potential and challenge students of achievement in the same right-sized community.
 - We remain aware of the shifts between ACT and SAT in the state and our Admissions Office works with both organizations to stay at the forefront of all college admission testing across the state.
- Black, Latino and students identifying with two or more races/ethnicities are at an eight-year high (overall).
- Asian and Black first-time transfer students are at a seven year high.

Areas Needing Improvement



- Though it's important to UIS to remain a place of access and our selectivity rate (as shown on page 4) has inched up a bit, our goal remains to stabilize and grow enrollment.
- Freshman yield, though in keeping with the overall downward trend of our peer group, is something we continue to prioritize.
 - We have partnered with a consultant to help us analyze our admits' concerns, prioritize them and focus our work to maximize excitement early and extend engagement throughout the summer.

Strategies for Improvement



- Reorganization of enrollment management (EM) unit
 - Tying roles to goals under new leadership
 - Refocus on transfer and adult students, as we've focused on freshman
 - Bring honors program recruitment under larger enrollment management umbrella to aid in attracting more high achieving students
- Expand consultancy partnership to include transfer and other student populations
- Increased use of standard practice options like transfer student search
- Positioning UIS Admissions & Financial Aid as a resource, especially in our community and other key geographic areas

Areas We Are Watching



- Ways to be present off-campus in our community
- Integrated Enrollment Management Marketing
 - Search
 - Web
 - E-communication
 - Social
 - Digital
 - Event
- Pipeline building
- Stewarding constituencies of note