

University of Illinois Medical Center



Medical Center Performance
Presented to the
University of Illinois Board of Trustees
May 19, 2005

Volume Indicators

(9 months thru March 31st)

	FY05		FY04
	Actual	Budget	Actual
Discharges	13,566	13,138	13,696
Patient Days	87,540	83,603	86,808
Outpatient Visits	324,538	312,377	311,013

Summary of Financial Performance

(9 months thru March 31st)

	FY05		FY04
	Actual	Budget	Actual
REVENUES	<u>\$ 366.8</u>	<u>\$ 355.5</u>	<u>\$ 334.1</u>
TOTAL EXPENSES	<u>363.9</u>	<u>354.0</u>	<u>338.6</u>
OPERATING INCOME	2.9	1.5	(4.5)
NET NONOPERATING	<u>1.9</u>	<u>1.7</u>	<u>2.0</u>
INCREASE IN NET ASSETS	<u><u>\$ 4.8</u></u>	<u><u>\$ 3.2</u></u>	<u><u>\$ (2.5)</u></u>

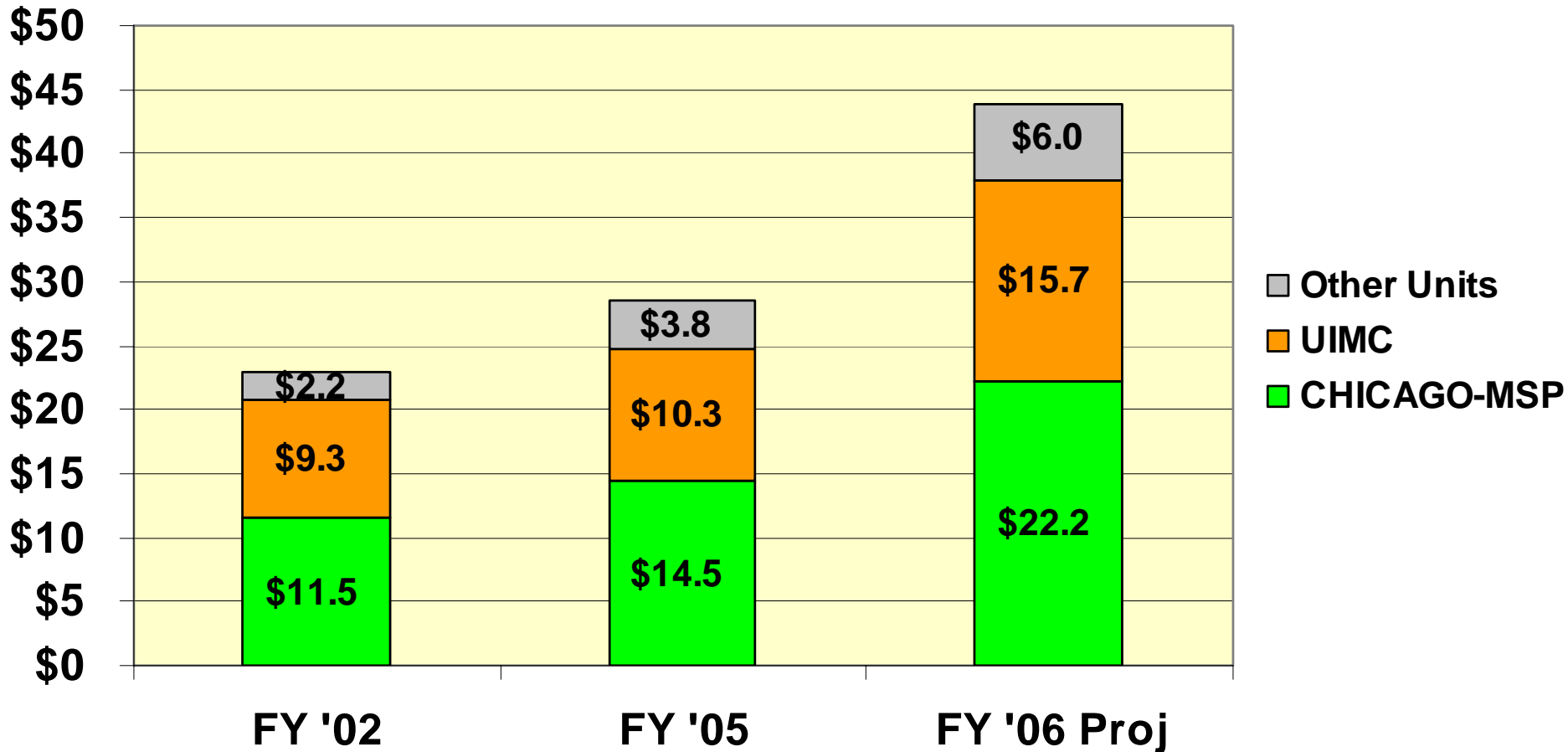
Challenges

- Increase volume
- Control expenses
- Respond to self insurance crisis

MEDICAL MALPRACTICE:

The College of Medicine @ Chicago and UIMC have borne the brunt of the Cost of Self Insurance

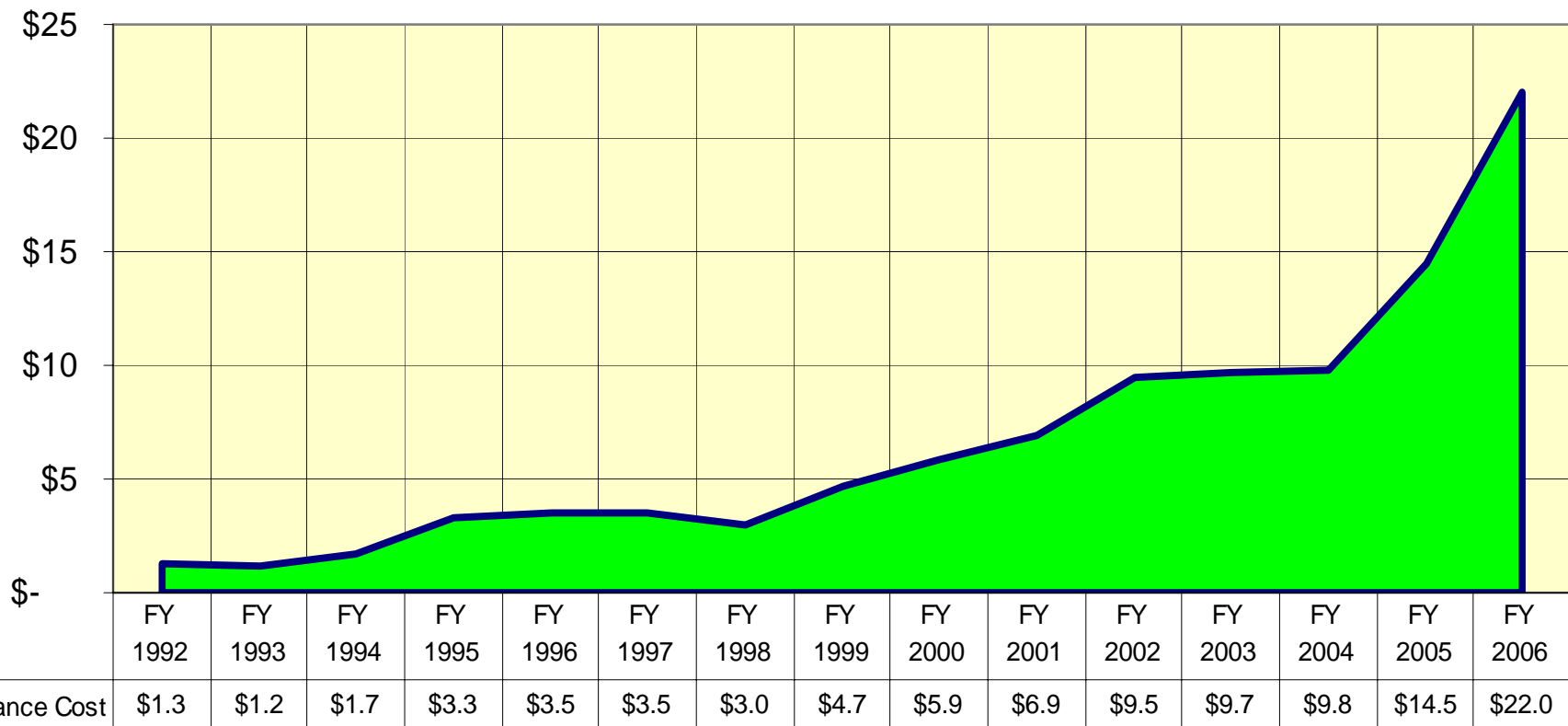
(Data in \$ Millions)



The Growth in the Cost of Self Insurance between FY '04 and FY '06 will exceed the growth from FY '92 to FY '04

(318-325 CFTE's from FY '00 thru FY '05)

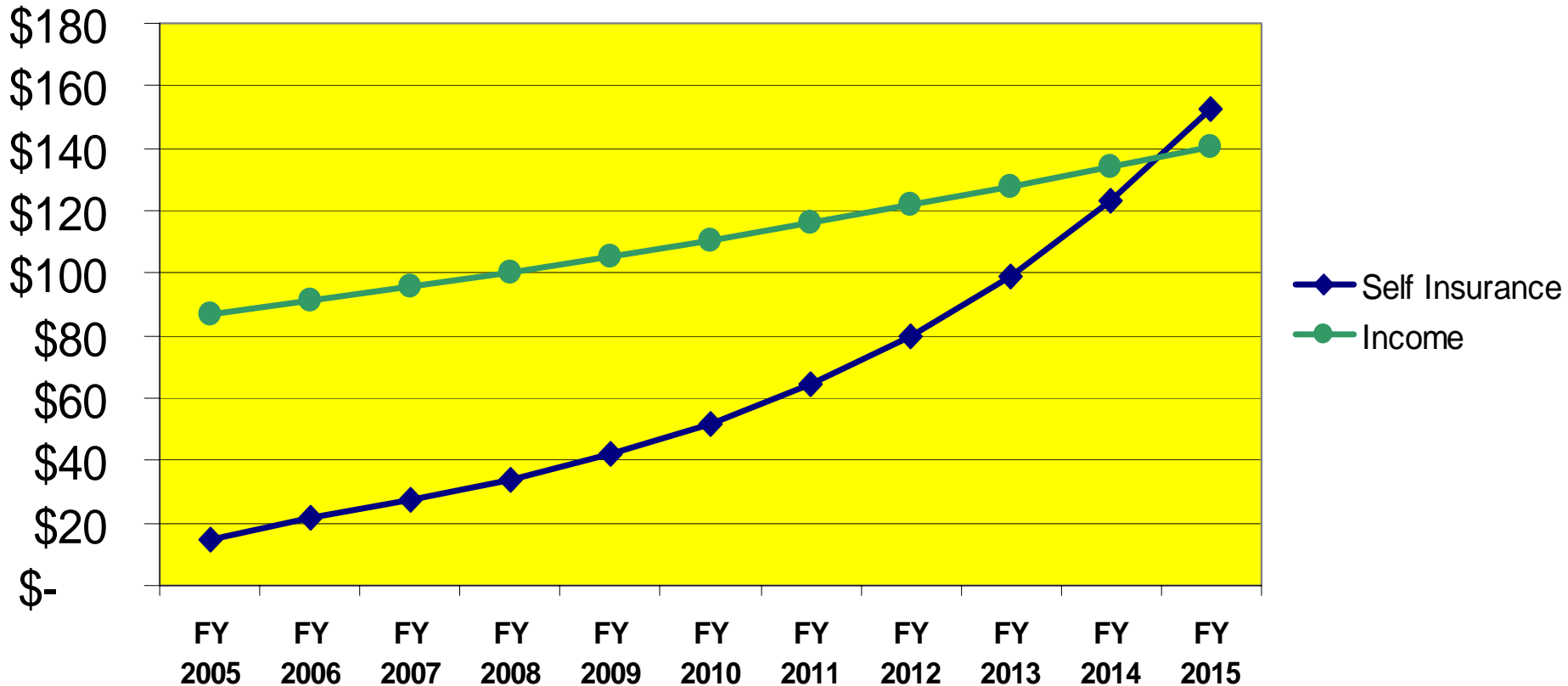
Chicago MSP Self Insurance Cost (Data in \$ Millions)



Within the decade the Cost of Self Insurance will exceed the Group's Total Income

The Chicago MSP

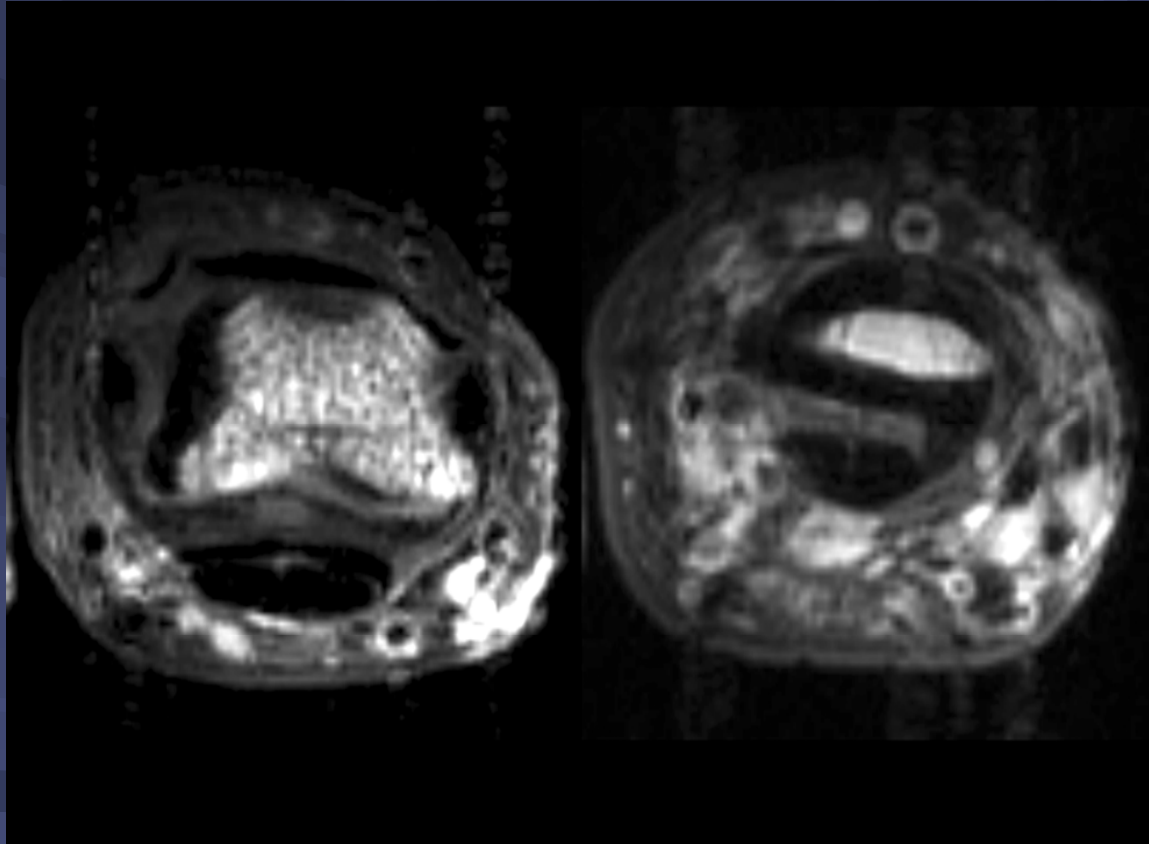
(Income in \$ millions)



UIMC has Reduced Malpractice Risk

- Risk associated with moderate sedation
- Obstructive sleep apnea and elective procedures
- Free flow pumps replaced
- Retained sponge x-ray strategy
- Prophylaxis for venous thrombosis
- Anesthesia pre-surgical evaluation clinic
- 87%(vs 45%) of cases now reported to risk management at time of incident
- Apology with amnesty program being developed

First 9.4T Human Image



Functional Imaging of Human Thought

