

University of Illinois at Chicago

Dashboard Indicators

**ADMISSIONS, STUDENT QUALIFICATIONS, TRANSFER ENROLLMENTS UPDATES BY:
UNIVERSITY OFFICE FOR PLANNING AND BUDGETING
AS OF APRIL 10, 2013**

**PRESENTED BY:
CHANCELLOR PAULA ALLEN-MEARES
MAY 29, 2013**

Standard Peer Group



University of Illinois at Chicago

Florida State University

Temple University*

University of Alabama at Birmingham

University of Arizona - Tucson

University of California - Irvine

University of Cincinnati

University of Colorado Denver*

University of New Mexico - Albuquerque

University of South Florida - Tampa

Virginia Commonwealth University

Wayne State University

* State-related research institution.

Chicago-area Comparison Group



University of Illinois at Chicago

Chicago State University

Columbia College, Chicago*

DePaul University*

Illinois Institute of Technology*

Loyola University, Chicago*

North Park University*

Northeastern Illinois University

Northwestern University*

Roosevelt University*

Saint Xavier University*

University of Chicago*

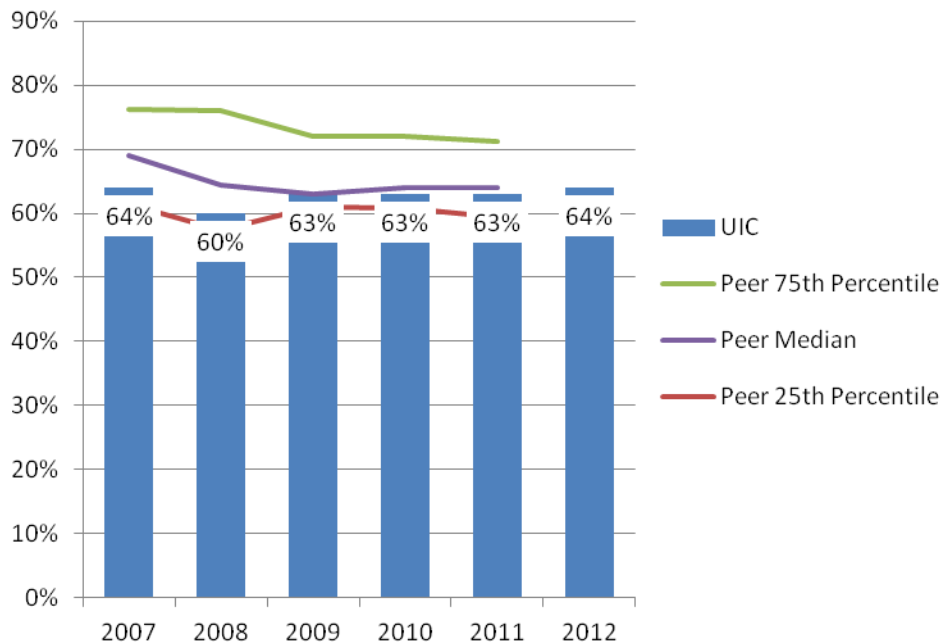
* Private institution

Admissions, Student Qualifications and Transfer Enrollments



UIC and Standard Peer Group

Percent First-Time Freshmen Applicants Admitted* Fall 2007 – Fall 2012



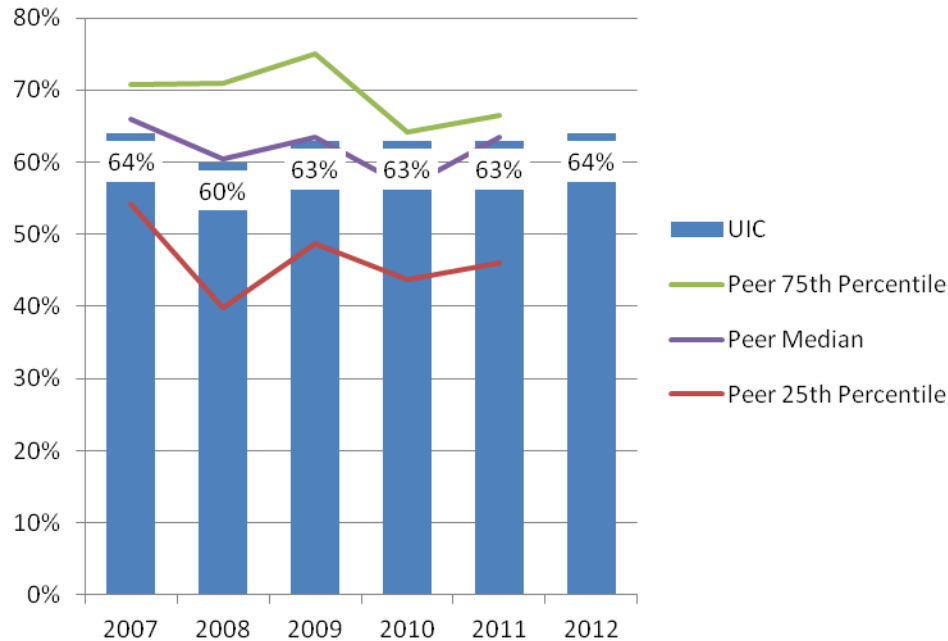
The percent of freshmen applicants admitted to University of Illinois at Chicago is currently on par with its peer median.

TASK: Expand and focus recruitment efforts to achieve a diverse and successful student body. Through participation in the Common Application process and implementation of our Strategic Recruitment Plan, it is anticipated that UIC will see a rise in the number and quality of national and international applicants, while remaining true to our mission.

* Percent Admitted = Percent of (total admits divided by total applicants).

UIC and Chicago-area Comparison Group

Percent First-Time Freshmen Applicants Admitted* Fall 2007 – Fall 2012



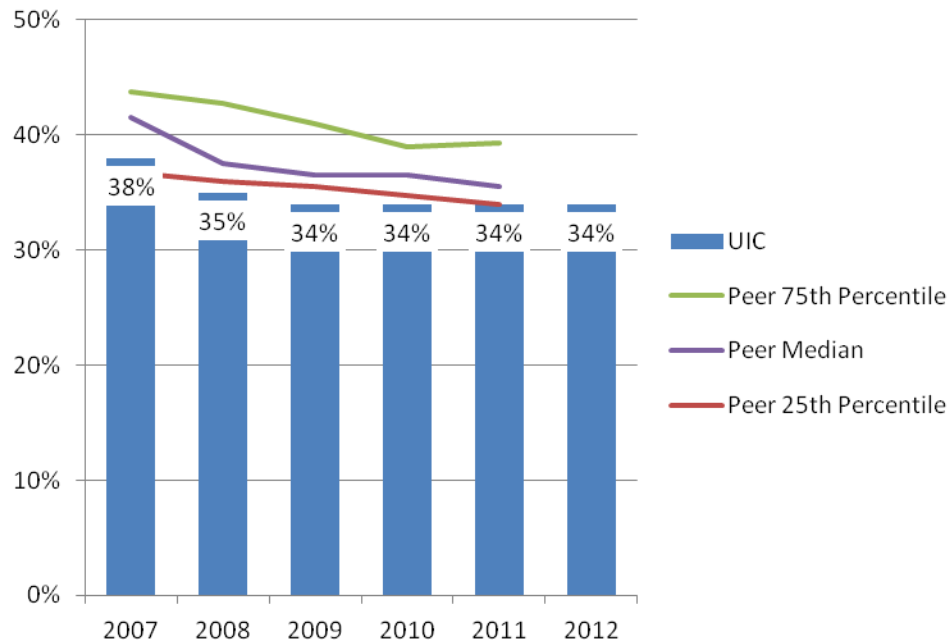
The percent of freshmen applicants admitted to University of Illinois at Chicago is currently on par with its peer median.

TASK: Continue to monitor and adjust Freshmen admissions rates as necessary to reflect strategic recruitment goals and achieve target enrollments.

* Percent Admitted = Percent of (total admits divided by total applicants).

UIC and Standard Peer Group

Percent First-Time Freshmen Admissions Yield* Fall 2007 – Fall 2012



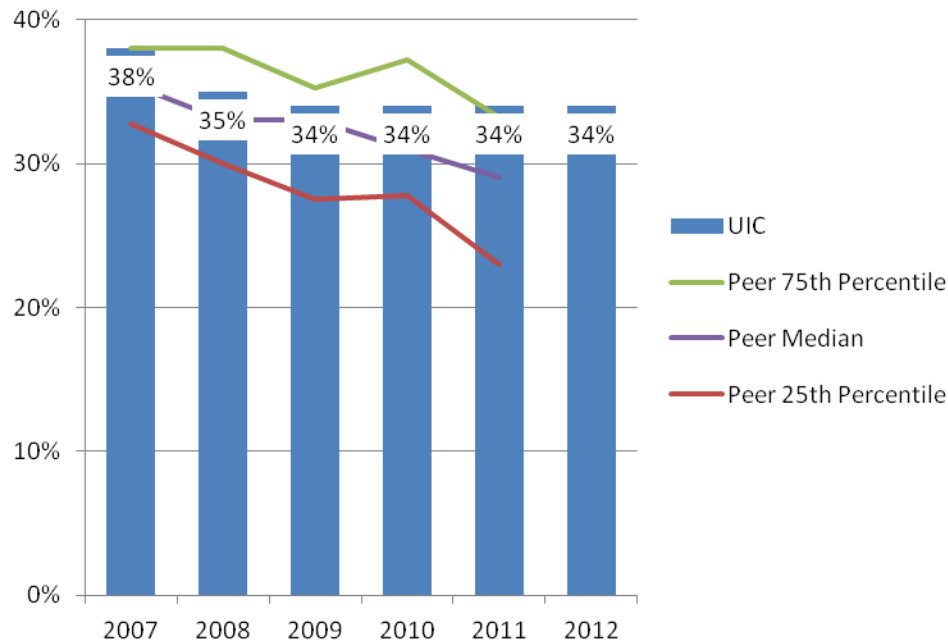
Admissions yield at the University of Illinois at Chicago, while lower than its peer median, has remained stable since 2009.

TASK: Expand and focus recruitment efforts to ensure a strong yield rate to meet our target enrollment and achieve a diverse and successful student body.

* Admissions Yield = Percent of (total enrolled divided by total admits).

UIC and Chicago-area Comparison Group

Percent First-Time Freshmen Admissions Yield* Fall 2007 – Fall 2012



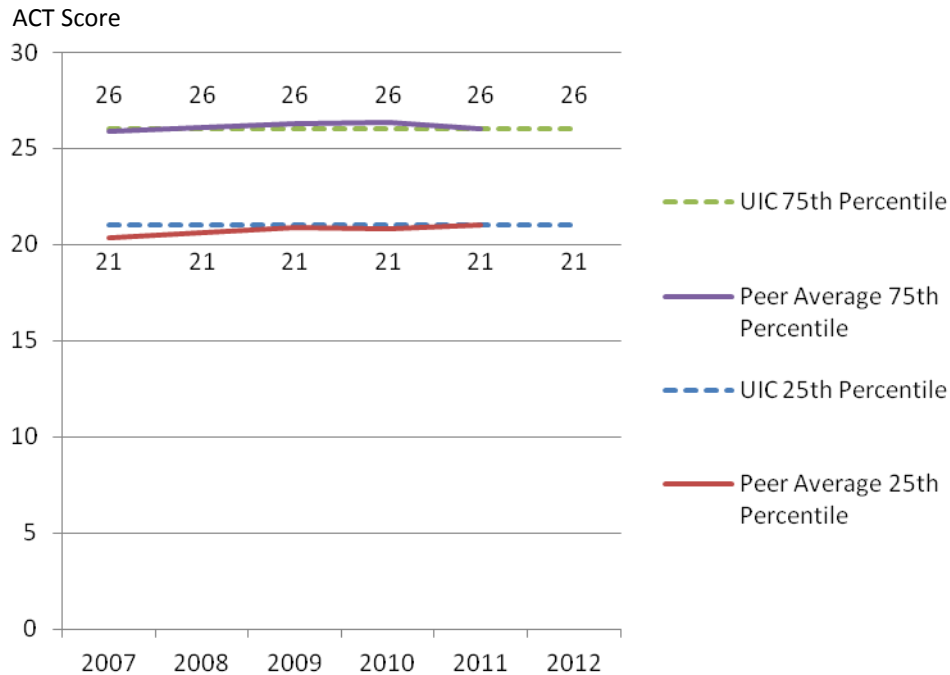
Admissions yield at the University of Illinois at Chicago is higher than its peer median.

TASK: Expand and focus recruitment efforts to ensure a strong yield rate to meet our target enrollment and remain a strong draw for Chicago-area residents.

* Admissions Yield = Percent of (total enrolled divided by total admits).

UIC and Standard Peer Group

Entering Freshmen ACT Composite Scores 25th and 75th Percentile: Fall 2007 – Fall 2012



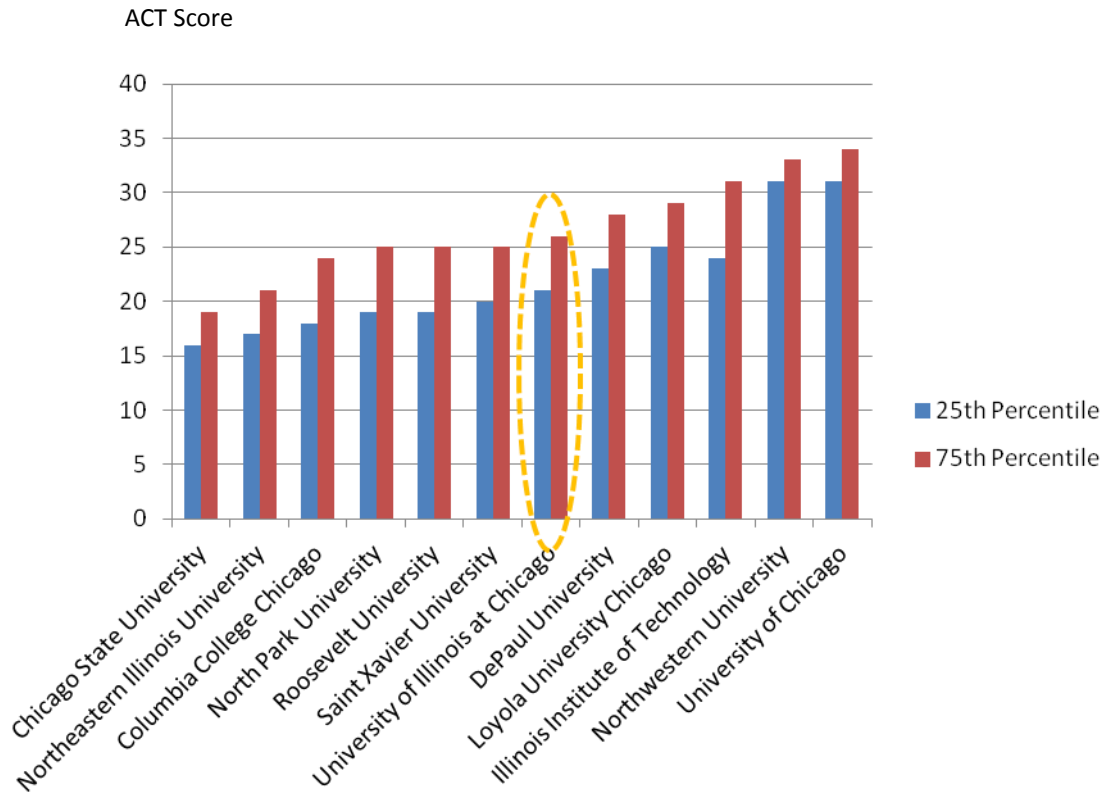
ACT scores of freshmen entering the University of Illinois at Chicago are on par with those at peer institutions.

TASK: Intensify our strategic recruiting efforts and increase our student support through scholarships, private giving, President's Award Program, the Honors program and paid internships.

Note: Fewer students at peer institutions submit ACT scores.

UIC and Chicago-area Comparison Group

Fall 2011 Entering Freshmen ACT Composite Scores 25th and 75th Percentile



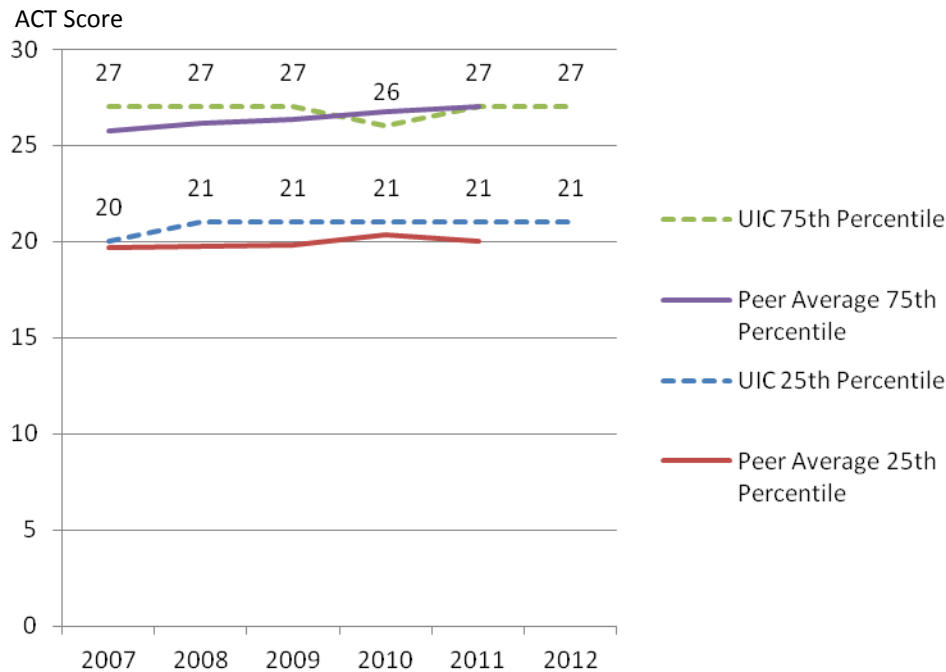
ACT scores of freshmen entering the University of Illinois at Chicago are at the midpoint for the Chicago-area comparison group.

TASK: Continue to refine and adapt the ACCESS admissions process to promote the optimal yield of high-achieving students who wish to pursue higher learning in the Chicago area.

Note: Fewer students at Chicago-area comparison institutions submit ACT scores.

UIC and Standard Peer Group

Entering Freshmen ACT English Score 25th and 75th Percentile: Fall 2007 – Fall 2012



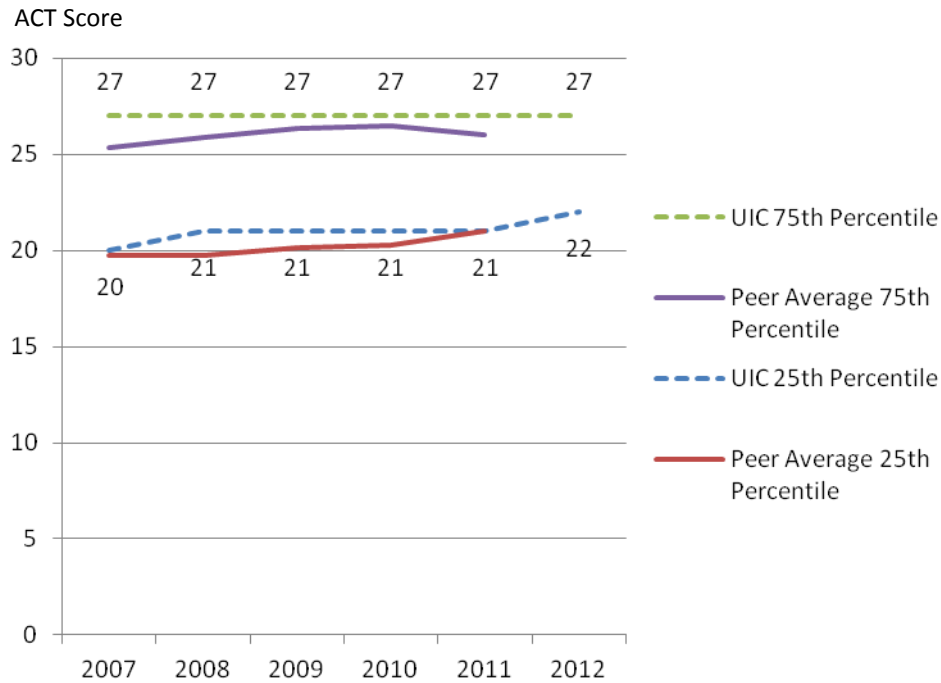
ACT English scores of freshmen entering the University of Illinois at Chicago are on par with those at peer institutions.

TASK: Continue to strategically focus our recruiting efforts and increase scholarship support to enhance our ability to recruit high-achieving students from underrepresented groups.

Note: Fewer students at peer institutions submit ACT scores.

UIC and Standard Peer Group

Entering Freshmen ACT Math Score 25th and 75th Percentile: Fall 2007 – Fall 2012



ACT Math scores of freshmen entering the University of Illinois at Chicago are higher than those at peer institutions.

TASK: Build on our strengths in STEM and health care programs to continue to attract more high-achieving students through scholarship support and undergraduate research opportunities.

Note: Fewer students at peer institutions submit ACT scores.

UIC and Standard Peer Group

First-Time Transfers Enrollment: Fall 2007 – Fall 2012

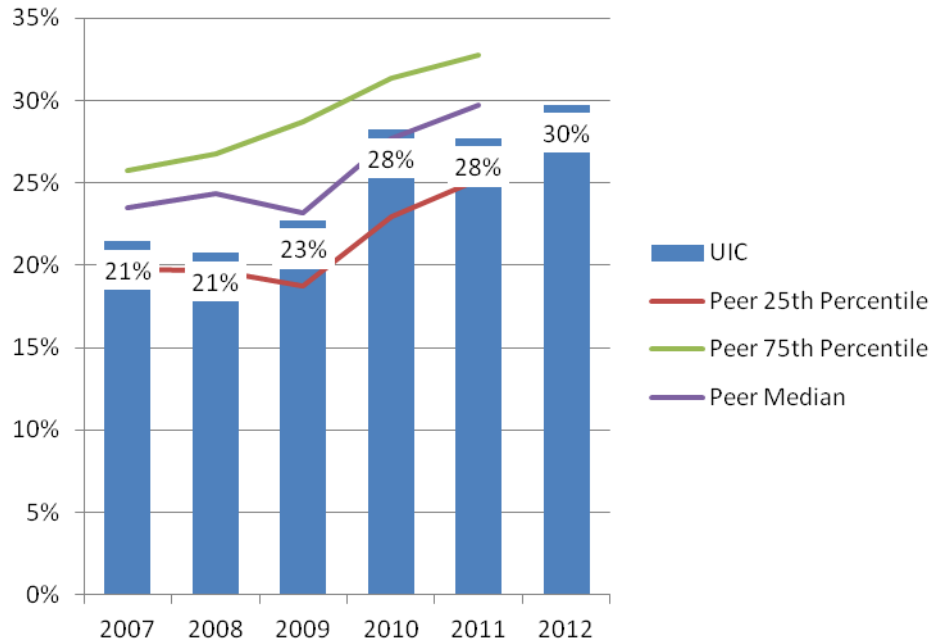
	2007	2008	2009	2010	2011	2012
University of Illinois at Chicago	1,651	1,447	1,453	1,656	1,522	1,452
Florida State University	2,090	1,708	2,485	2,461	2,502	
Temple University	2,494	2,767	2,890	2,808	2,692	
University of Alabama at Birmingham	1,068	936	1,064	1,276	1,266	
University of Arizona - Tucson	1,913	1,903	1,912	1,875	1,843	
University of California - Irvine	1,435	1,346	1,733	1,861	1,728	
University of Cincinnati	830	1,026	1,083	1,086	1,071	
University of Colorado Denver	1,535	1,450	1,552	1,723	1,801	
University of New Mexico - Albuquerque	1,077	992	1,294	1,351	1,297	
University of South Florida - Tampa	4,006	3,886	2,951	2,948	3,125	
Virginia Commonwealth University	1,729	1,891	2,044	2,008	2,145	
Wayne State University	2,403	1,744	1,889	1,900	2,080	

Data Source: IPEDS Data Center.

TASK: Continue to provide access and opportunities for students coming from the City Colleges of Chicago, and expand our transfer programs to include community colleges throughout the State.

UIC and Standard Peer Group

Percent First-Time Transfers from Underrepresented* Groups: Fall 2007 – Fall 2012



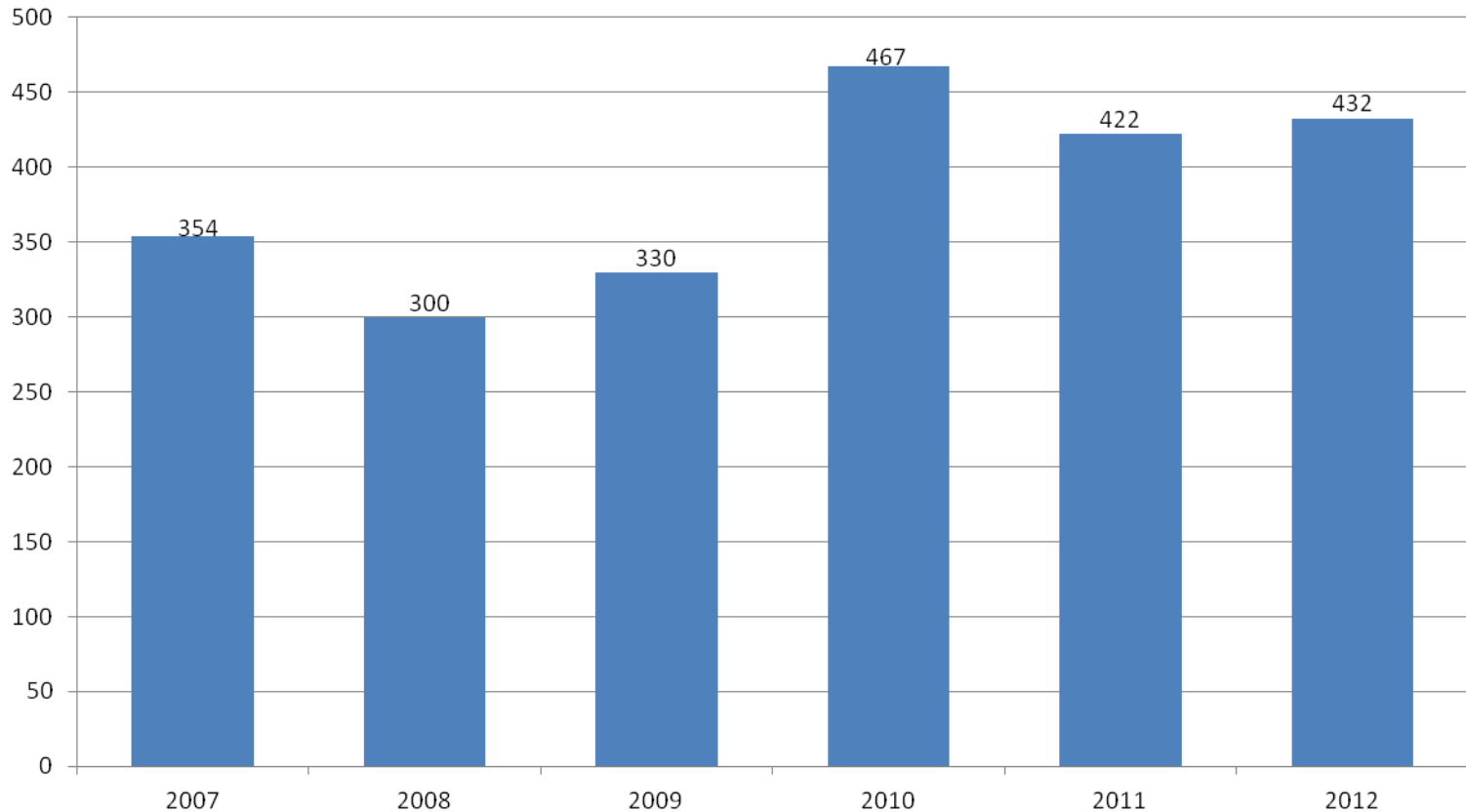
The percent of first-time transfers from underrepresented groups at the University of Illinois at Chicago is on par with its peer median.

TASK: Continue to grow successful programs for Hispanic and African American transfer students to reach the peer 75th percentile by 2015.

* Includes Black, Hispanic, American Indian, Native Hawaiian/Other Pacific Islander, and multi-racial students.

Note: During the same period, Asian students comprised an additional 12 to 15% of first-time transfers.

Number of First-Time Transfers from Underrepresented* Groups Fall 2007 – Fall 2012



TASK: Continue to grow successful programs and develop new programs for Latino and African American transfer students, including the expansion of partnerships with the City Colleges of Chicago, and further develop opportunities with Illinois community colleges over the next two years.

* Includes Black, Hispanic, American Indian, Native Hawaiian/Other Pacific Islander, and multi-racial students.

Admissions, Student Qualifications and Transfer Enrollments



SUCCESS AND HIGHLIGHTS

Attracting a High Achieving and Diverse Entering Class



- UIC transitioned to the online Common Application in Fall 2013 with the number of admits increasing by 13% over Fall 2012.
- The number of admits from underrepresented minorities (URM) increased 8%. African American Intend-To-Enroll numbers are well ahead of last year's enrollment yield.
- The proportion of URM admits with an ACT score of 30 or better increased 86% .
- Domestic non-resident students increased 60% and international admits are up 68%.
- Admissions hosted 15 targeted yield events and 8 admitted student tour programs in the spring 2013.
- Recruitment visits to local high schools increased by 12% (to 260 schools).

Admissions, Student Qualifications and Transfer Enrollments: Goals



- Increase the percentage of out-of-state undergraduate students to broaden geographical diversity of the student body.
- Increase the number of academically qualified African American first -year and transfer applications to improve the yield of newly-enrolled undergraduates.
- Achieve formally-recognized status as a Hispanic-serving institution.

Action Items



- ❖ Expand partnerships with feeder high schools and community colleges to determine and remove application and enrollment barriers.
- ❖ Complete an analysis of out-of-state markets to identify the greatest potential to recruit and enroll students.
- ❑ Expand and target pre-matriculation support activities to augment yield, strengthen student engagement and improve undergraduate retention.
- ❑ Seek more merit scholarship funding to enhance recruitment of high-achieving minority students.

- ❖ time-frame (1-2 year)
- ❑ time-frame (3-5 year)

Questions?

