

University of Illinois at Urbana-Champaign

Dashboard Indicators

ADMISSIONS, STUDENT QUALIFICATIONS, TRANSFER ENROLLMENTS UPDATES BY:
UNIVERSITY OFFICE FOR PLANNING AND BUDGETING
APRIL 10, 2013

PRESENTED BY:
CHANCELLOR PHYLLIS WISE
MAY 29, 2013

Peer Groups



University of Illinois at Urbana-Champaign*

University of California - Berkeley*

University of California - Los Angeles

University of California - San Diego

University of Michigan - Ann Arbor

University of North Carolina - Chapel Hill*

University of Texas - Austin*

University of Washington

University of Wisconsin - Madison

University of Virginia

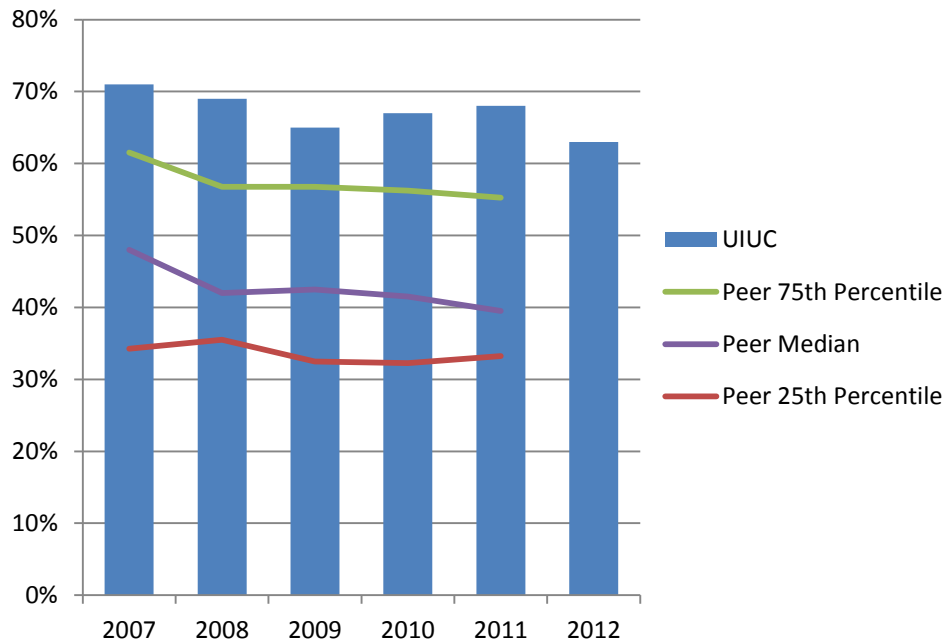
* No medical center.

Admissions, Student Qualifications and Transfer Enrollments



Percent First-Time Freshmen Applicants Admitted*

Fall 2007 – Fall 2012

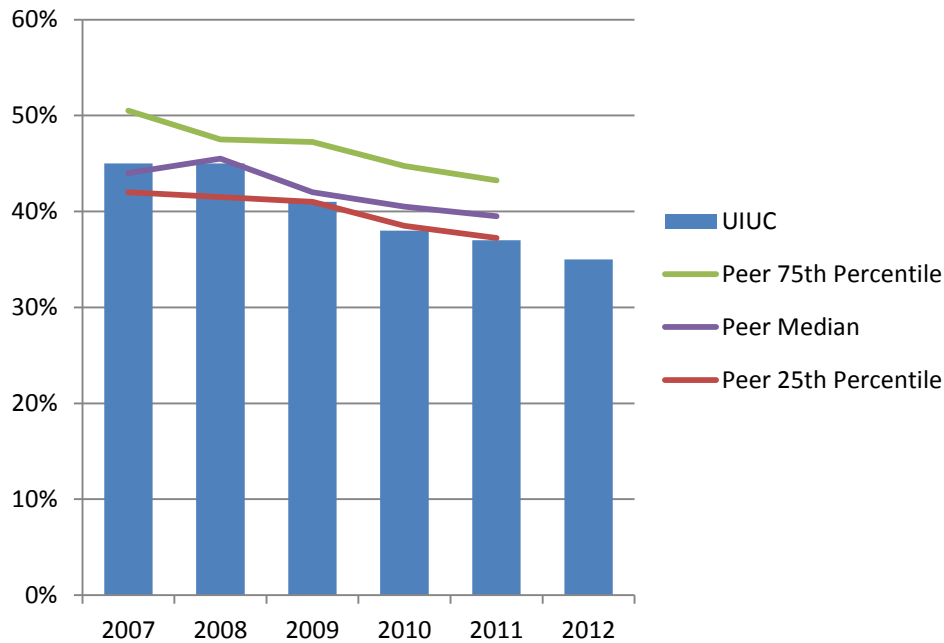


University of Illinois at Urbana-Champaign admits a higher percent of freshman applicants compared to the peer median.

* Percent Admitted = Percent of (total admits divided by total applicants). Fall 2012 peer data not available.

Percent First-Time Freshmen Admissions Yield*

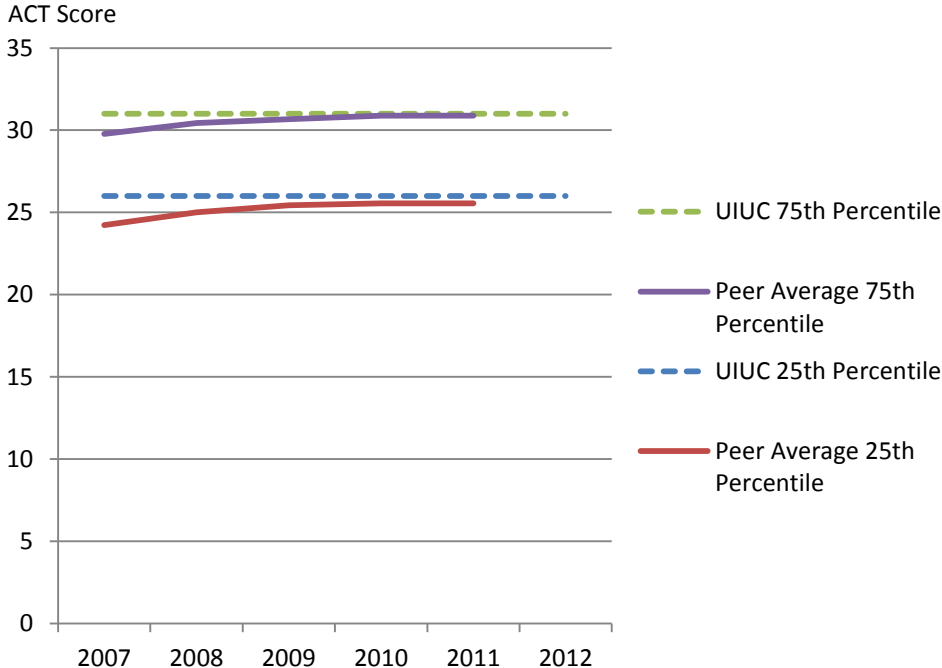
Fall 2007 – Fall 2012



Admissions yield at the University of Illinois at Urbana-Champaign has fallen below the peer median.

* Admissions Yield = Percent of (total enrolled divided by total admits). Fall 2012 peer data not available.

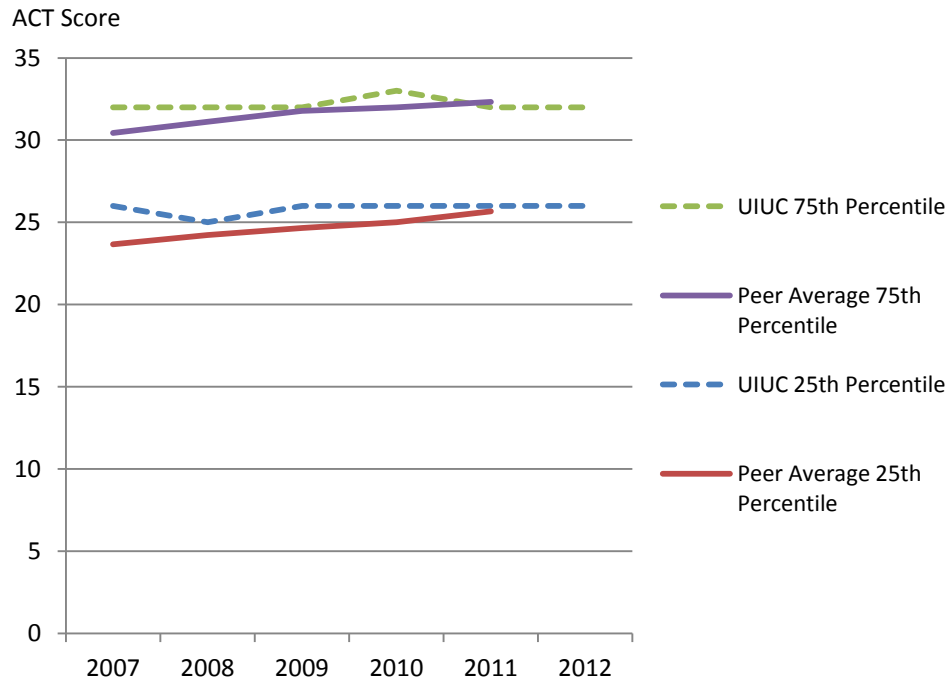
Entering Freshmen ACT Composite Scores 25th and 75th Percentile Fall 2007 – Fall 2012



ACT scores of incoming freshmen at the University of Illinois at Urbana-Champaign are on par with peers.

Note: Fewer students at peer institutions submit ACT scores. Fall 2012 peer data not available.

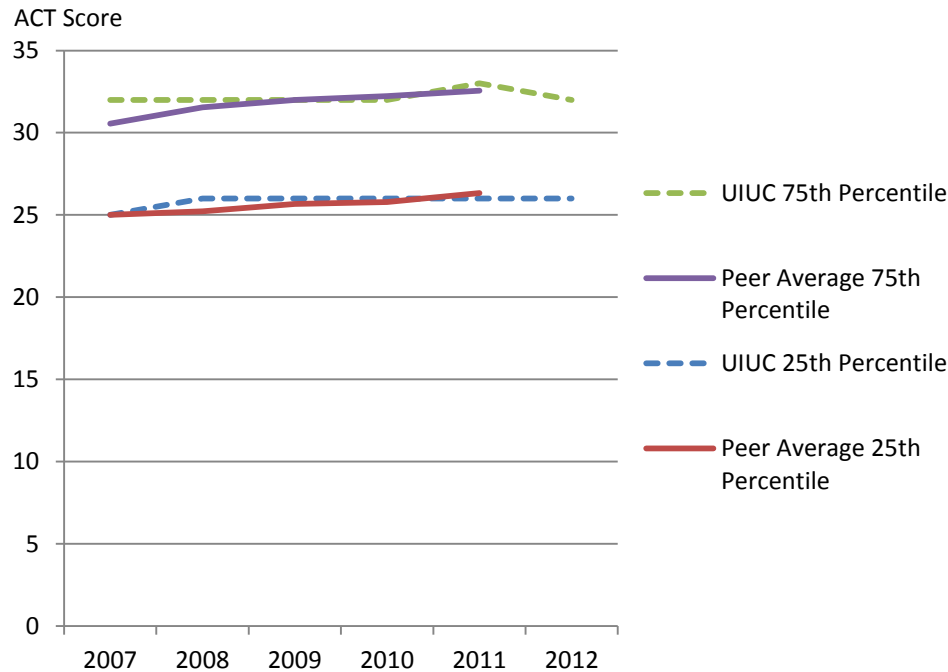
Entering Freshmen ACT English Score 25th and 75th Percentile Fall 2007 – Fall 2012



ACT English scores of incoming freshmen at the University of Illinois at Urbana-Champaign are on par with peers.

Note: Fewer students at peer institutions submit ACT scores. Fall 2012 peer data not available.

Entering Freshmen ACT Math Score 25th and 75th Percentile Fall 2007 – Fall 2012



ACT Math scores of entering freshmen at the University of Illinois at Urbana-Champaign are on par with peers.

Note: Fewer students at peer institutions submit ACT scores. Fall 2012 peer data not available.

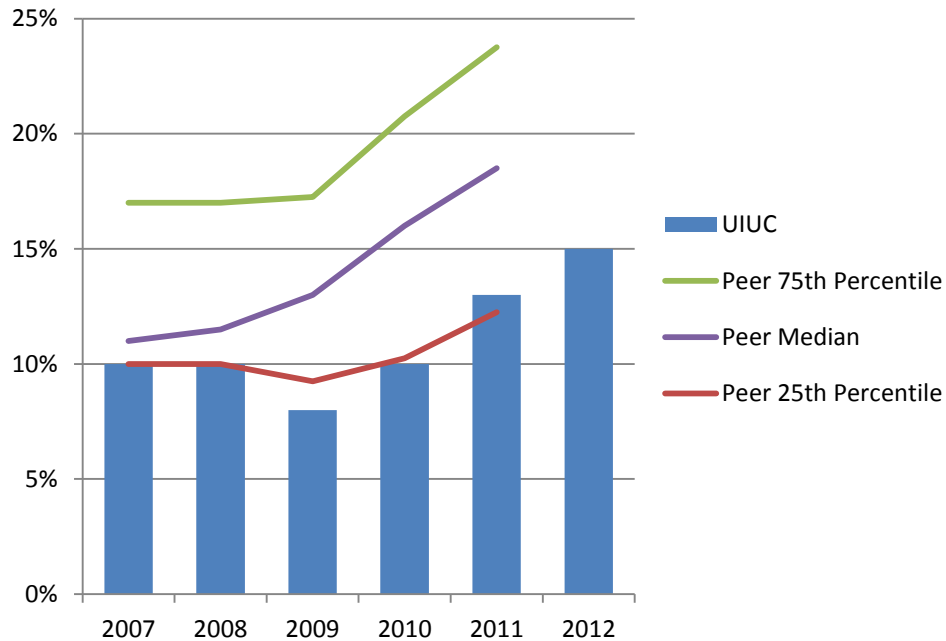
University of Illinois at Urbana-Champaign and Peer Institutions First-Time Transfers Enrollment Fall 2007 – Fall 2012

Institution	2007	2008	2009	2010	2011	2012
University of Illinois at Urbana-Champaign	858	1,183	1,195	1,168	1,398	1,350
University of California - Berkeley	2,034	2,012	2,199	2,195	2,336	
University of California - Los Angeles	3,317	3,219	3,234	3,228	3,116	
University of California - San Diego	1,723	1,858	1,931	2,567	2,795	
University of Michigan - Ann Arbor	755	759	870	928	874	
University of North Carolina - Chapel Hill	793	783	778	922	791	
University of Texas - Austin	2,297	2,270	2,457	2,452	2,492	
University of Virginia	590	588	641	631	621	
University of Washington	1,483	1,492	1,677	1,623	2,001	
University of Wisconsin-Madison	1,292	1,238	1,187	1,304	1,326	

Note: Fall 2012 peer data not available.

Data Source: IPEDS Data Center.

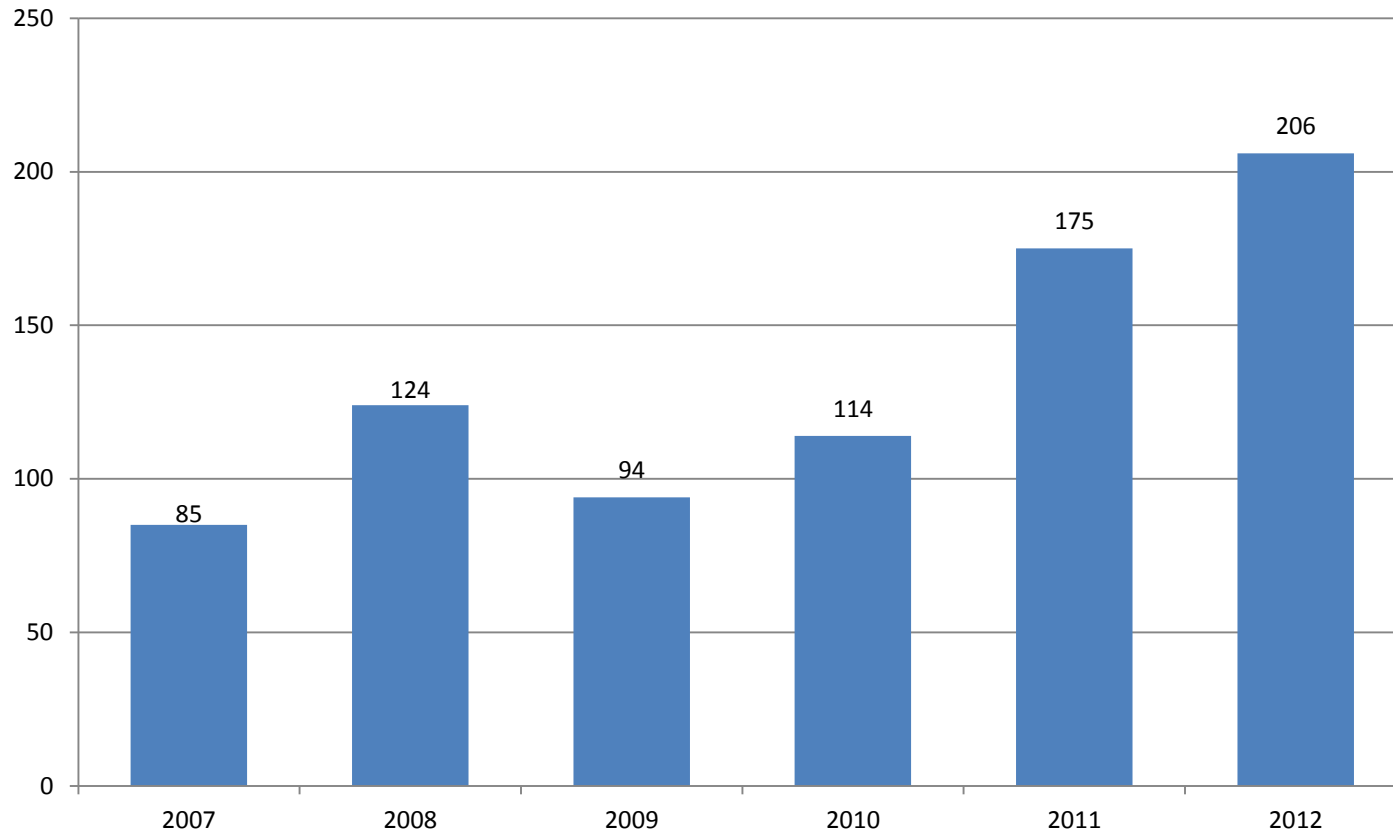
Percent First-Time Transfers from Underrepresented* Groups Fall 2007 – Fall 2012



The percent of first-time transfers from underrepresented groups at the University of Illinois at Urbana-Champaign is lower than its peer median.

* Includes Black, Hispanic, American Indian, Native Hawaiian/Other Pacific Islander, and multi-racial students. Fall 2012 peer data not available.

Number of First-Time Transfers from Underrepresented* Groups Fall 2007 – Fall 2012



* Includes Black, Hispanic, American Indian, Native Hawaiian/Other Pacific Islander, and multi-racial students.

Admissions, Student Qualifications and Transfer Enrollments

SUCCESS AND HIGHLIGHTS

Attracting High Achieving Students

33,181 applications in 2013, **all-time record**, up over **5%** from prior year

6% increase in overall students of color applications

35,000 campus visitors hosted for recruiting and summer registration events

800 high schools visited in 2012-13, an **increase of 250** over past 3 years

53% of our entering freshman in 2012 scored in the **top 5%** of all ACT test takers

36% of our admitted freshman for 2013 scored in the **top 2%** of all ACT test takers

Resources for Transfer Candidates

The screenshot shows the University of Illinois Admissions website. The header includes the 'Admissions' logo, navigation links for 'Contact Us', 'FAQ', and 'Get On Our List', and a search bar. A blue navigation bar contains links for 'Early Planning', 'Academic Life', 'Campus Life', 'Blogs', 'Visits', 'Cost', 'Apply' (highlighted), 'Admitted', 'Parents', and 'Counselors'. Below this is a breadcrumb trail: 'Home > Apply > Application Review Process > Transfer Application Review Process'. The date 'Thursday, April 25, 2013' is shown in the top right. On the left, there is a sidebar with 'Apply Online' links and 'Related Blog Posts' featuring three articles with author photos. The main content area has a large orange heading 'Transfer Application Review Process' with social media icons. Below it is a sub-heading 'Learn about the various requirements and factors involved with transferring to the University of Illinois.' A grey box contains the section 'Helpful Tools for Transferring to Illinois' with a list of resources. Below that is the section 'Admission Decision Factors' with a paragraph and a list of factors.

OFFICE OF UNDERGRADUATE ADMISSIONS · UNIVERSITY OF ILLINOIS AT URBANA-CHAMPAIGN

Admissions Contact Us | FAQ | Get On Our List Search Admissions

Early Planning Academic Life Campus Life Blogs Visits Cost **Apply** Admitted Parents Counselors

Home > Apply > Application Review Process > Transfer Application Review Process Thursday, April 25, 2013

Apply Online
Application Review Process
Dates & Deadlines
Application Procedures
Check Application Status

Related Blog Posts

Summer Registration Sign-Up
This is just a friendly reminder that Summer...
by Jan

Applying to the University of Illinois this Fall? Send us your ACT or SAT test scores!
To be considered for admission into Illinois, you...
by Beth

Can't Decide Where to Go? Top 5 Questions to Ask Yourself When Deciding!
Where do you want to end up?—The whole...
by Samantha

Read more blogs

Transfer Application Review Process

Learn about the various requirements and factors involved with transferring to the University of Illinois.

Helpful Tools for Transferring to Illinois

Requirements vary depending on your credit level and your intended program of study. The following tools will assist you in determining your specific requirements.

- [Transfer Requirement Directory](#) – Course and GPA requirements
- [Transfer Handbook](#) – Course and GPA requirements with additional recommendations
- [Transfer Articulation Guides](#) – Course and GPA requirements for students attending community colleges in Illinois
- [Transfer Grade Point Average \(GPA\) Guidelines](#)
- [Transfer Credit](#)

Admission Decision Factors

Admission of transfer applicants is based on a combination of the hours and content of transferable credit and the transfer GPA. Admission of sophomore applicants is based on a combination of college and high school credentials, including ACT/SAT scores.

The following factors are considered in an admission decision:

- Course prerequisites for specific program
- Transferable cumulative GPA and sometimes a technical GPA
- Number of transferable credit hours required for specific program

Articulation agreements exist with all community colleges in Illinois

A community college advisory board meets regularly with Admissions

Admissions, Student Qualifications and Transfer Enrollments: Goals



- Improve the overall yield
- Increase the number of transfer student applications and enrollment
- Increase the diversity of transfer students

Action Items



- ❖ Increase engagement of faculty and alumni in recruitment of students
- ❖ Expand outreach in rural IL communities
- ❖ Build relationships with key high schools and other organizations
- ❖ Continue to increase presence and recruitment activities out-of-state
- ❖ Pilot a pathway program with Danville Area Community College (DACC) to increase transfer applications
- ❖ Improve funding opportunities for transfers

- ❑ Implement a modeling tool to better understand likelihood of attracting top candidates through scholarships and financial aid
- ❑ Expand the DACC pilot program to additional community colleges in the state
 - ❖ time-frame (e.g. 1-2 year)
 - ❑ time-frame (e.g. 3-5 year)

Questions?

