

# University of Illinois at Springfield

## Analysis of Dashboard Indicators

ENROLLMENTS, GRADUATION AND RETENTION RATES,  
AND DEGREES AWARDED UPDATES:

PRESENTED BY:  
CHANCELLOR SUSAN J. KOCH  
NOVEMBER 12, 2015

Reported to the Board of Trustees  
November 12, 2015

# Areas Meeting or Exceeding Expectations

- Graduate enrollment
- Diversity of student body
- Undergraduate and graduate STEM degrees
- Undergraduate and graduate degrees granted to students from underrepresented groups

# Accomplishments

- Established Second Year Retention Initiative (SYRI)
- Ranked best most affordable online degree option in Illinois
- Number of graduate and professional degrees well above peer median
- Percent of degrees awarded to students in underrepresented groups increasing
- Increase in private need-based scholarships
- Merged Development and Alumni Relations into integrated Office of Advancement

# Areas Needing Improvement

- Enrollment
- Freshman retention and graduation rates
- Need-based scholarships

# Strategy to improve **enrollment**

- **Actions:**
  - Increase number of academic programs in high-demand areas
  - Continue to implement innovative online programs
  - Enhance competitive marketing strategies to increase institutional visibility
  - Implement new retention and completion programming

# Strategy to improve freshman retention and graduation rates

- **Actions:**
  - Focus on recruiting highly qualified freshmen
  - Enhance recruitment in targeted markets
  - Make retention an institution-wide priority
  - Implement enhanced orientation, My Degree Matters and sophomore bridge programming

# Strategy to improve **need-based scholarships**

- **Actions:**
  - Increase availability of need-based financial aid
  - Make scholarships a top priority of the Office of Advancement
  - Educate donors about scholarships and increase number of scholarships

# Areas we are watching

- Size of freshman class
- Tuition and fees compared to other public universities in Illinois
- Student debt
- Retention and graduation rates



# University of Illinois at Springfield

## Dashboard Indicators

ENROLLMENTS, GRADUATION AND RETENTION RATES,  
AND DEGREES AWARDED UPDATES BY:  
UNIVERSITY OFFICE FOR PLANNING AND BUDGETING  
OCTOBER 12, 2015

PRESENTED BY:  
CHANCELLOR SUSAN J. KOCH

Page 9/43  
NOVEMBER 12, 2015

# Peer Groups



## **University of Illinois at Springfield**

Auburn University-Montgomery (AL)

Clark University\* (Worcester, MA)

College of Charleston (SC)

Georgia College and State University (Milledgeville, GA)

Iona College\* (New Rochelle, NY)

Lake Superior State University (Sault Ste. Marie, MI)

Marist College\* (Poughkeepsie, NY)

Northern Michigan University (Marquette, MI)

Shippensburg University of Pennsylvania

State University of New York at Brockport

Trinity University (San Antonio, TX)\*

Union College (Schenectady, NY)\*

University of South Dakota

University of Wisconsin-Green Bay

\* Private Institution

# Enrollments



# University of Illinois at Springfield and Peer Institutions Fall Term Enrollment Fall 2009 – Fall 2015

Institution	All Student Total						Undergraduate						Graduate and Professional					
	2009	2010	2011	2012	2013	2014	2009	2010	2011	2012	2013	2014	2009	2010	2011	2012	2013	2014
<b>University of Illinois at Springfield</b>	<b>4,977</b>	<b>5,174</b>	<b>5,137</b>	<b>5,048</b>	<b>5,137</b>	<b>5,431</b>	<b>3,027</b>	<b>3,197</b>	<b>3,112</b>	<b>3,054</b>	<b>3,039</b>	<b>3,038</b>	<b>1,950</b>	<b>1,977</b>	<b>2,025</b>	<b>1,994</b>	<b>2,098</b>	<b>2,393</b>
Auburn University - Montgomery	5,567	5,817	5,305	5,005	5,084		4,695	4,829	4,403	4,240	4,322		872	988	902	765	762	
Clark University	3,416	3,451	3,462	3,503	3,551		2,333	2,317	2,311	2,352	2,380		1,083	1,134	1,151	1,151	1,171	
College of Charleston	11,772	11,532	11,649	11,723	11,619		10,147	10,121	10,461	10,506	10,488		1,625	1,411	1,188	1,217	1,131	
Georgia College and State University	6,633	6,737	6,636	6,444	6,551		5,644	5,715	5,635	5,568	5,729		989	1,022	1,001	876	822	
Iona College	4,248	4,123	4,065	4,241	4,241		3,344	3,256	3,189	3,462	3,539		904	867	876	779	702	
Lake Superior State University	2,588	2,662	2,805	2,590	2,435		2,568	2,588	2,727	2,582	2,429		20	74	78	8	6	
Marist College	6,179	6,140	6,303	6,377	6,365		5,330	5,189	5,442	5,560	5,566		849	951	861	817	799	
Northern Michigan University	9,428	9,417	9,405	9,159	8,918		8,684	8,719	8,712	8,474	8,221		744	698	693	685	697	
Shippensburg University of Pennsylvania	8,253	8,326	8,183	7,724	7,548		6,942	7,143	7,132	6,712	6,550		1,311	1,183	1,051	1,012	998	
SUNY College at Brockport	8,490	8,589	8,413	8,271	8,128		7,119	7,297	7,166	7,133	7,090		1,371	1,292	1,247	1,138	1,038	
Trinity University	2,693	2,498	2,535	2,458	2,358		2,487	2,296	2,331	2,286	2,161		206	202	204	172	197	
Union College	2,194	2,197	2,220	2,241	2,246		2,194	2,197	2,220	2,241	2,246		--	--	--	--	--	
University of South Dakota	9,617	10,151	9,970	10,284	10,235		7,098	7,220	7,473	7,690	7,633		2,519	2,931	2,497	2,594	2,602	
University of Wisconsin - Green Bay	6,638	6,636	6,671	6,801	6,668		6,369	6,389	6,451	6,622	6,445		269	247	220	179	223	

UIS Fall 2015 Total Enrollments

All Student Total: 5,402

Undergraduate: 2,937

Graduate: 2,465

Data Source: IPEDS Data Center. Includes on- and off-campus enrollments.

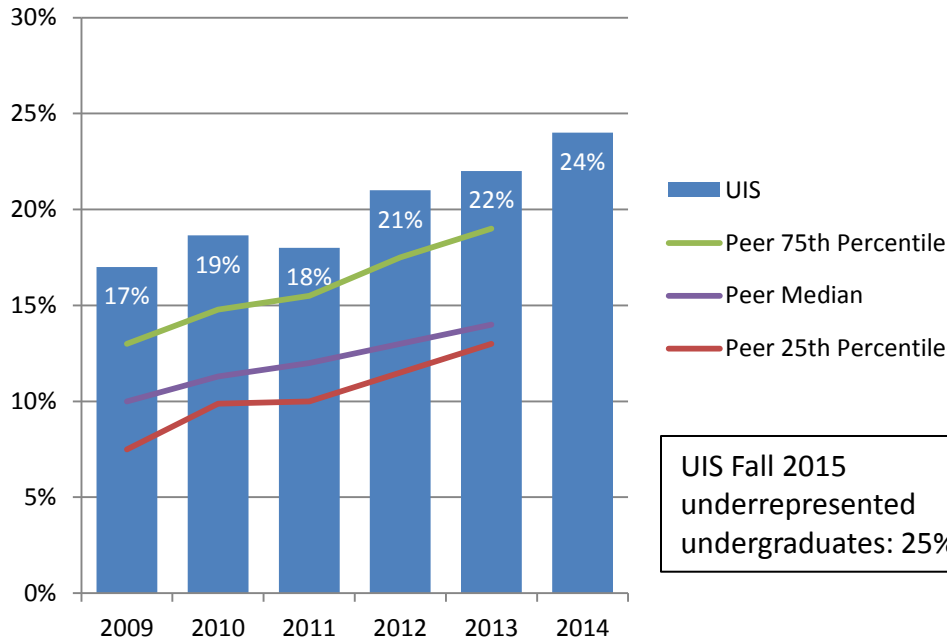
# University of Illinois at Springfield and Peer Institutions First-Time Freshmen Enrollment Fall 2009 – Fall 2015

	2009	2010	2011	2012	2013	2014
<b>University of Illinois at Springfield</b>	<b>288</b>	<b>294</b>	<b>241</b>	<b>270</b>	<b>316</b>	<b>305</b>
Auburn University - Montgomery	877	930	831	679	671	
Clark University	550	578	546	594	621	
College of Charleston	2,143	2,010	2,334	2,138	2,116	
Georgia College and State University	1,206	1,203	1,209	1,311	1,395	
Iona College	792	871	812	722	922	
Lake Superior State University	457	514	499	439	409	
Marist College	1,041	1,088	1,174	1,098	1,149	
Northern Michigan University	1,757	1,659	1,745	1,638	1,665	
Shippensburg University of Pennsylvania	1,679	1,712	1,752	1,485	1,522	
The College at Brockport	1,090	1,048	1,050	1,085	1,080	
Trinity University (San Antonio, TX)	640	587	636	596	534	
Union College (Schenectady, NY)	520	554	572	591	559	
University of South Dakota	1,125	1,175	1,248	1,353	1,342	
University of Wisconsin - Green Bay	1,049	906	910	921	809	

UIS Fall 2015 first-time freshmen: 268

Data Source: IPEDS Data Center. Includes on- and off-campus enrollments.

# Percent Enrolled Undergraduate Students from Underrepresented\* Groups Fall 2009 – Fall 2015

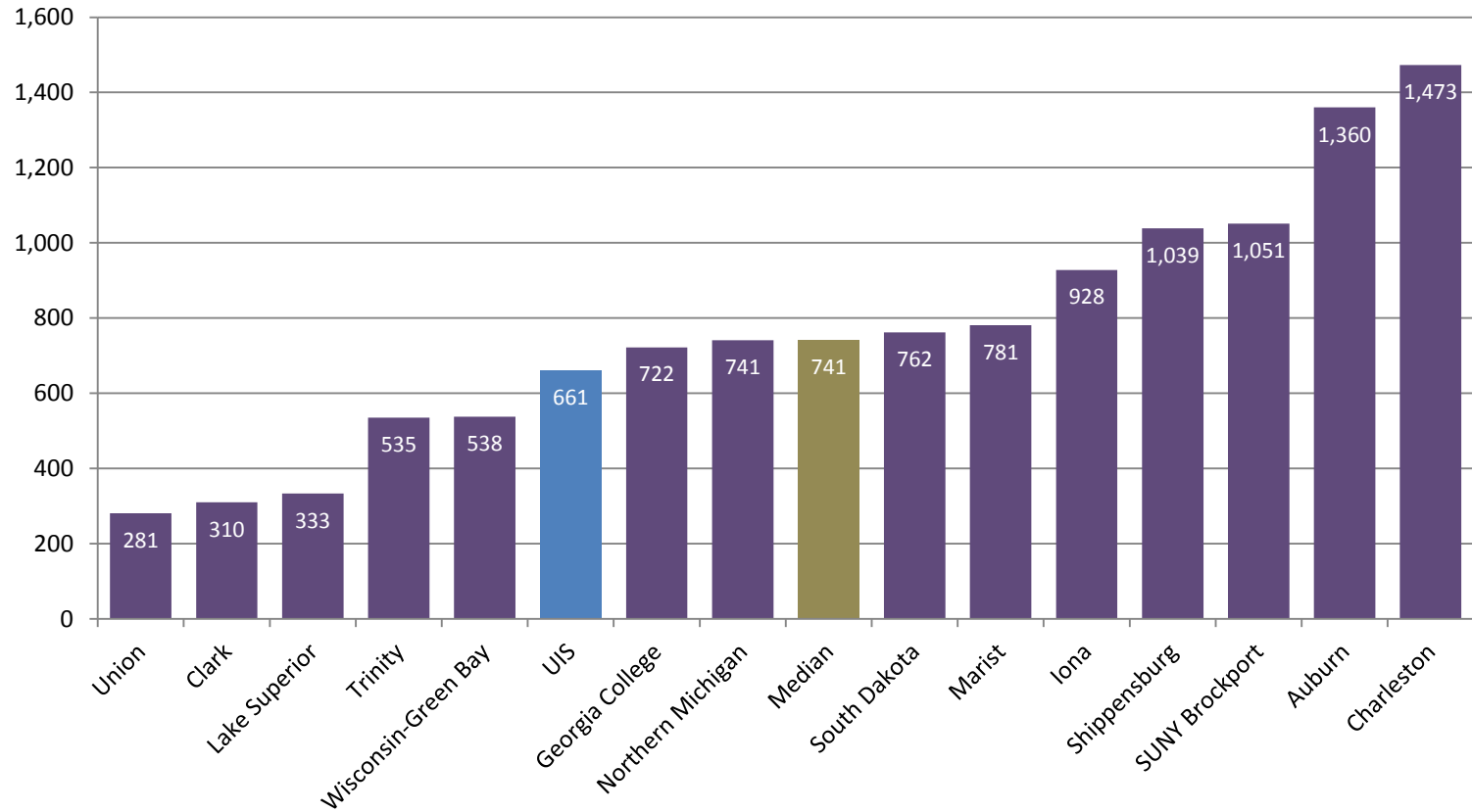


The percent of undergraduate students from underrepresented groups at the University of Illinois at Springfield is higher than the peer median.

UIS Fall 2015  
underrepresented  
undergraduates: 25%

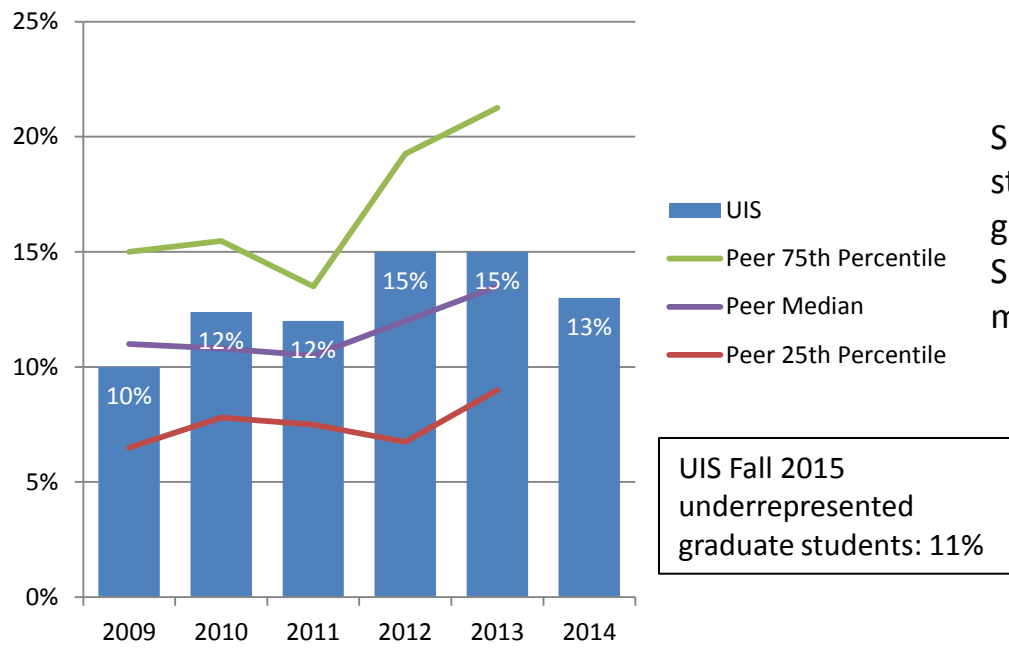
\* Includes Black, Hispanic, American Indian, Native Hawaiian/Other Pacific Islander, and multi-racial students.

# Enrolled Undergraduate Students from Underrepresented\* Groups Fall 2013



\* Includes Black, Hispanic, American Indian, Native Hawaiian/Other Pacific Islander, and multi-racial students.

# Percent Enrolled Graduate and Professional Students from Underrepresented\* Groups Fall 2009 – Fall 2015

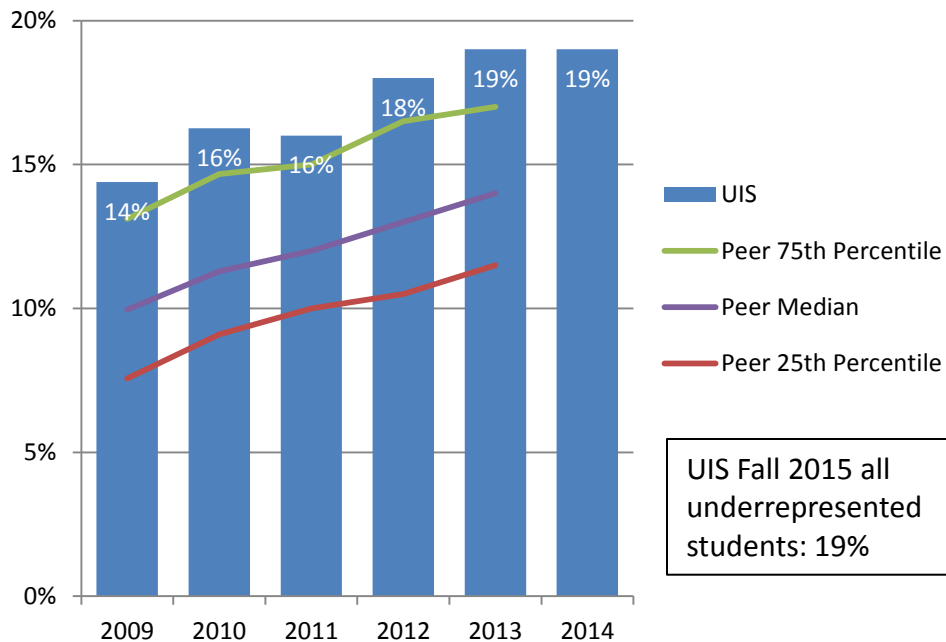


Since 2010, the percent of graduate students from underrepresented groups at the University of Illinois at Springfield was higher than its peer median.

\* Includes Black, Hispanic, American Indian, Native Hawaiian/Other Pacific Islander, and multi-racial students.



# Percent All Enrolled Students from Underrepresented\* Groups Fall 2009 – Fall 2015



The percent of total students from underrepresented groups at the University of Illinois at Springfield has been consistently higher than its peer median.

\* Includes Black, Hispanic, American Indian, Native Hawaiian/Other Pacific Islander, and multi-racial students.

# Enrollments: Goals



- Campus goal
- Campus goal

# Action Items



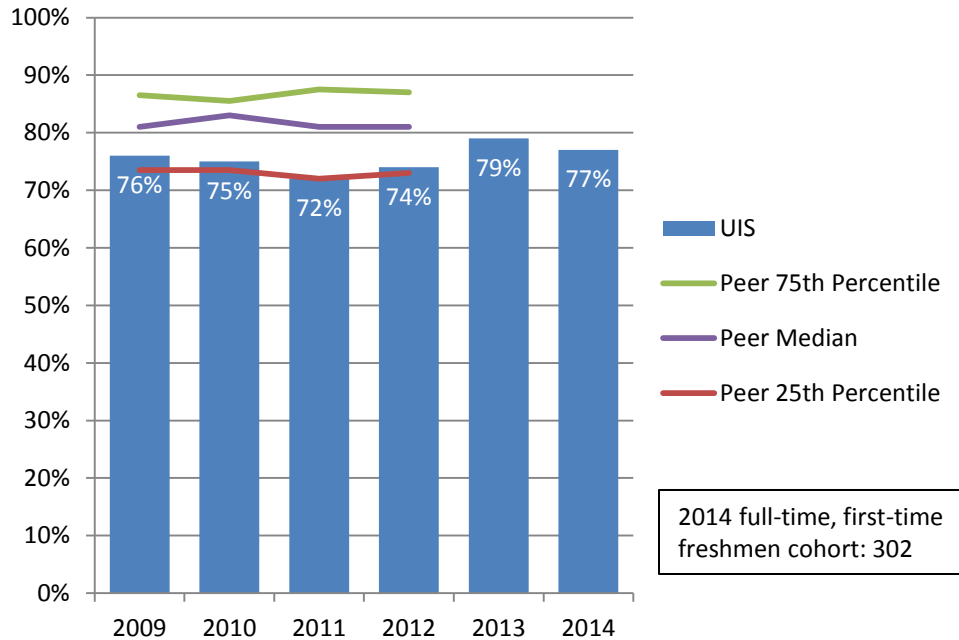
- Campus action item
- ★ Campus action item

- time-frame (1-2 year)
- ★ time-frame (3-5 year)

# Graduation and Retention Rates

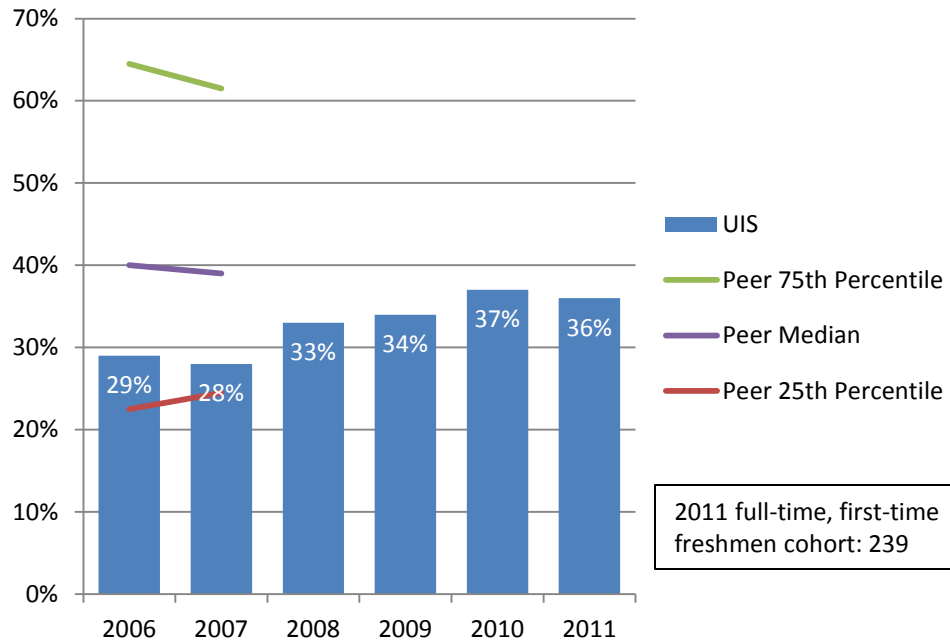


# Freshman to Sophomore One-Year Retention Rates 2009 – 2014 Cohorts



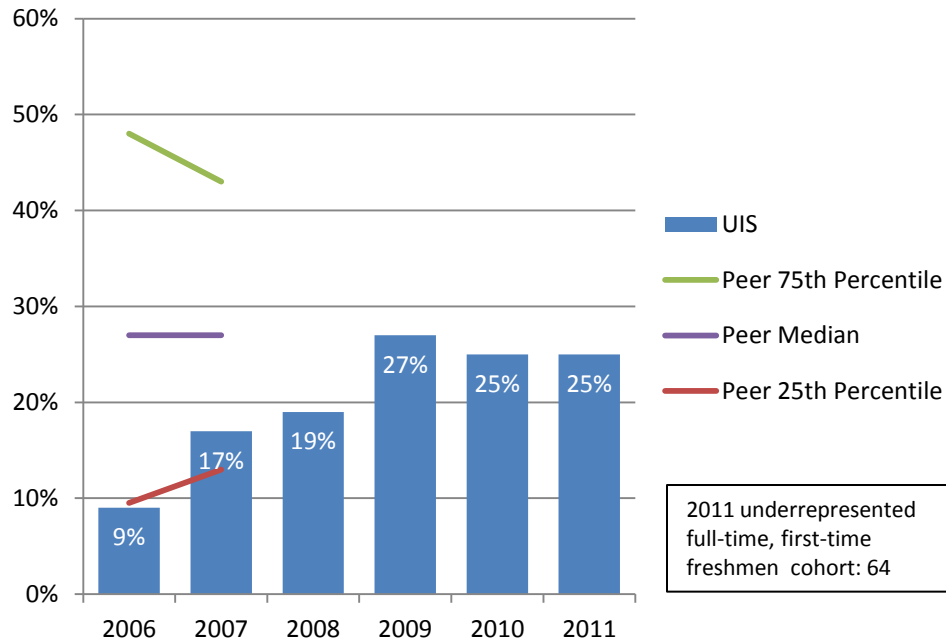
The freshmen retention rate at University of Illinois at Springfield is lower than the peer median.

# First-Time Freshmen Four-Year Graduation Rates 2006 – 2011 Cohorts



University of Illinois at Springfield graduates a lower percent of undergraduate students within four years compared to its peer median.

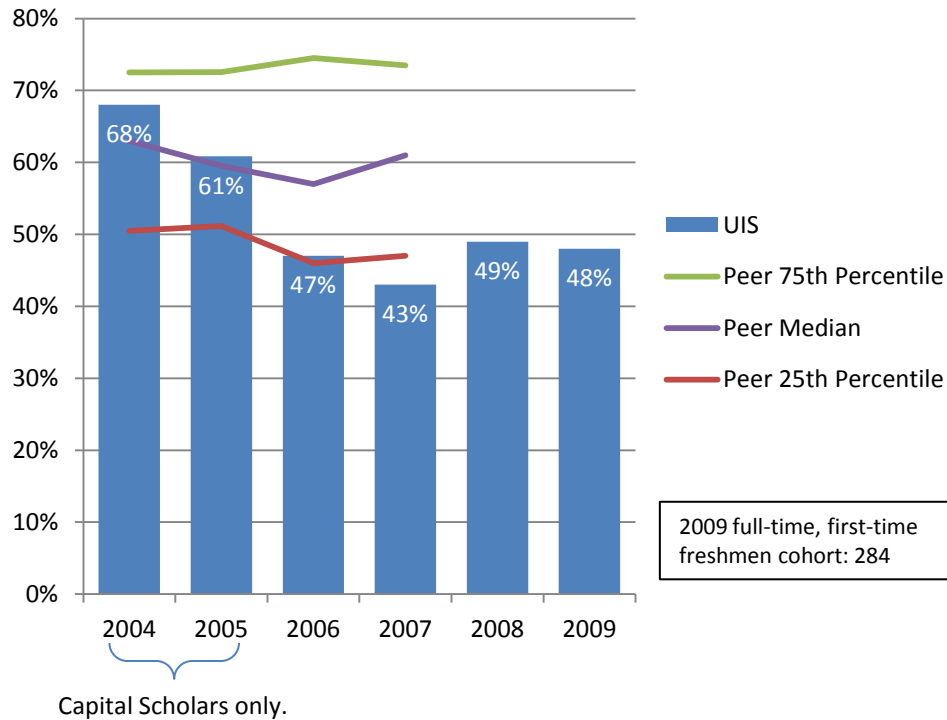
# Percent First-Time Freshmen from Underrepresented\* Groups Four-Year Graduation Rates 2006 – 2011 Cohorts



Compared to the peer median, the University of Illinois at Springfield graduates a lower percent of students from underrepresented groups within four years.

\* Includes Black, Hispanic, American Indian, Native Hawaiian/Other Pacific Islander, and multi-racial students.

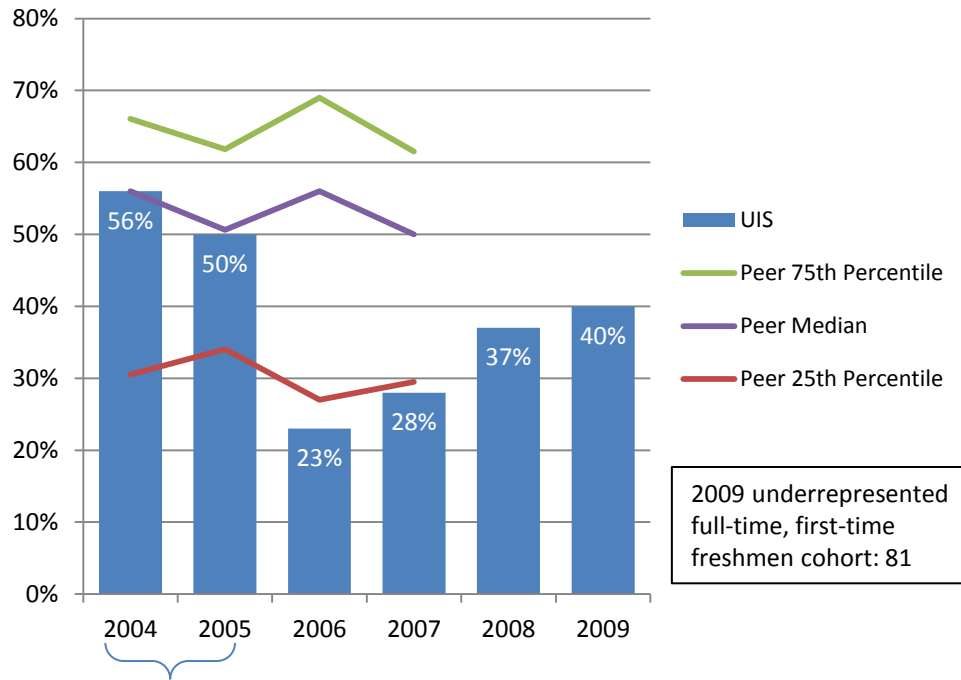
# First-Time Freshmen Six-Year Graduation Rates 2004 – 2009 Cohorts



University of Illinois at Springfield graduates a lower percent of students within six years compared to its peer median.



# Percent First-Time Freshmen from Underrepresented\* Groups Six-Year Graduation Rates 2004 – 2009 Cohorts



Compared to the peer median, the University of Illinois at Springfield graduates a lower percent of students from underrepresented groups within six years.

2009 underrepresented full-time, first-time freshmen cohort: 81

Capital Scholars only.

\* Includes Black, Hispanic, American Indian, Native Hawaiian/Other Pacific Islander, and multi-racial students.

# Graduation and Retention Rates: Goals



- Campus goal
- Campus goal

# Action Items



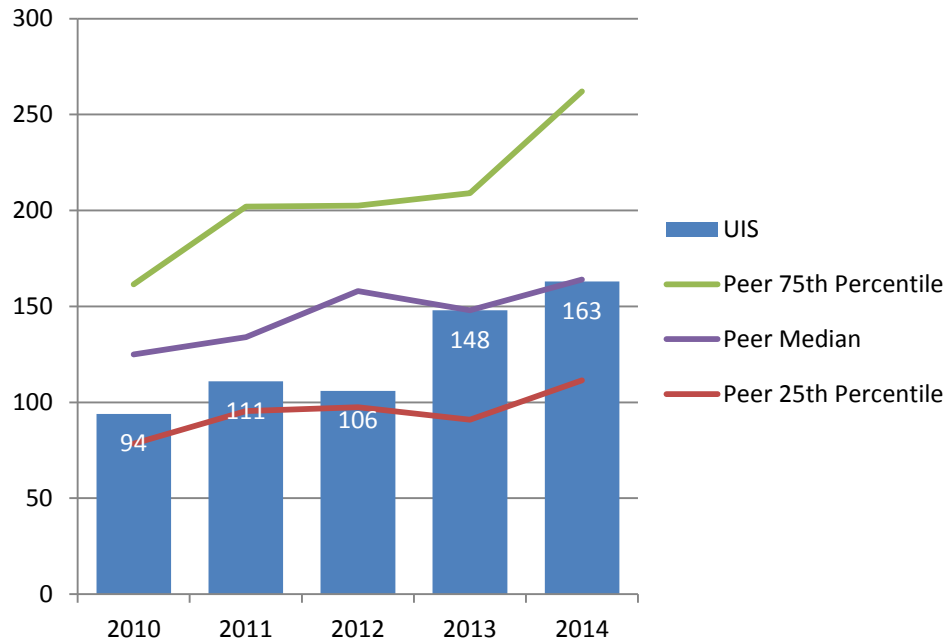
- Campus action item
- ★ Campus action item

- time-frame (1-2 year)
- ★ time-frame (3-5 year)

# Degrees Awarded



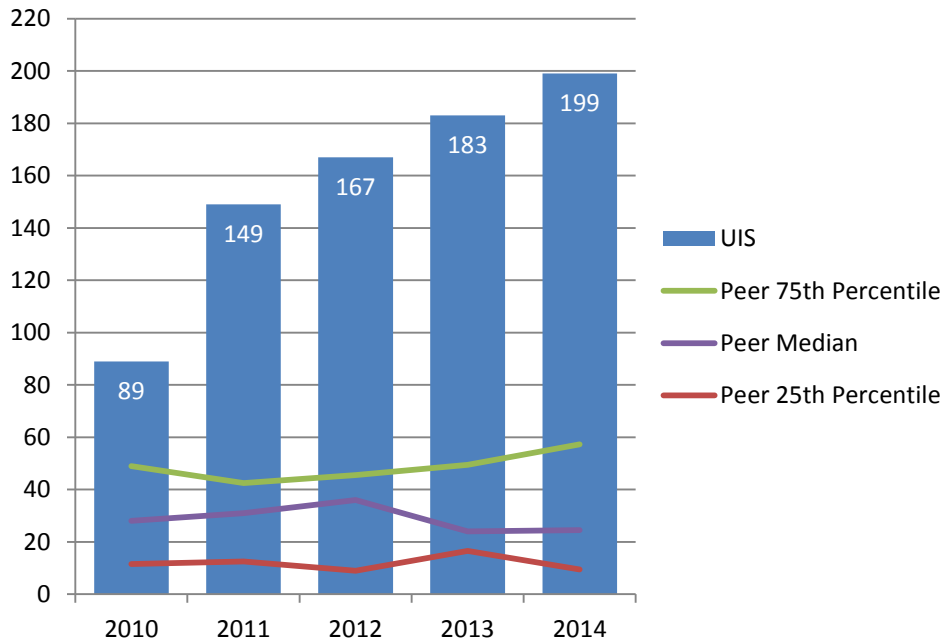
# Number of Degrees Granted in STEM\* Fields - Bachelor's FY 2010 – FY 2014



Since FY 2013, University of Illinois at Springfield granted a similar number of undergraduate degrees in STEM fields as its peer median.

\* Science, Technology, Engineering, and Mathematics.

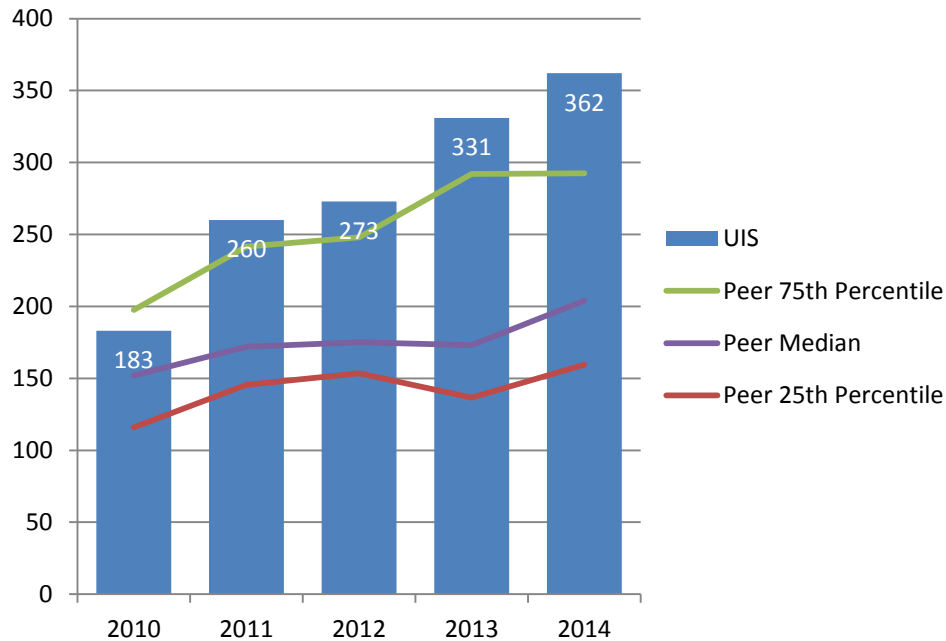
# Number of Degrees Granted in STEM\* Fields - Master's and Doctorate FY 2010 – FY 2014



University of Illinois at Springfield grants more graduate degrees in STEM fields than its peer median.

\* Science, Technology, Engineering, and Mathematics.

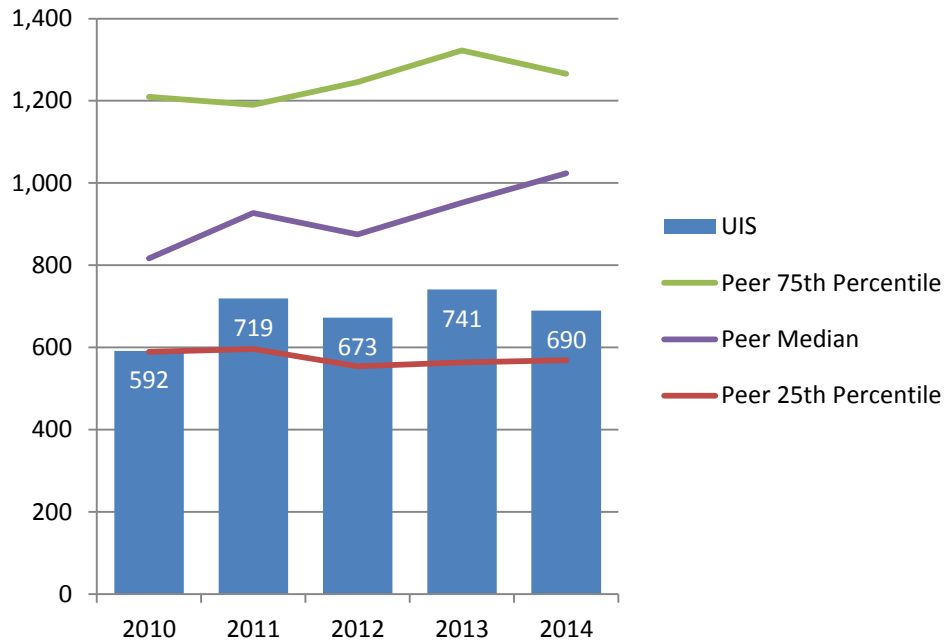
# Number of Degrees Granted in STEM\* Fields - Total Degrees FY 2010 – FY 2014



University of Illinois at Springfield grants more degrees in STEM fields than its peer median.

\* Science, Technology, Engineering, and Mathematics.

# Number of Degrees Granted – Bachelor's FY 2010 – FY 2014

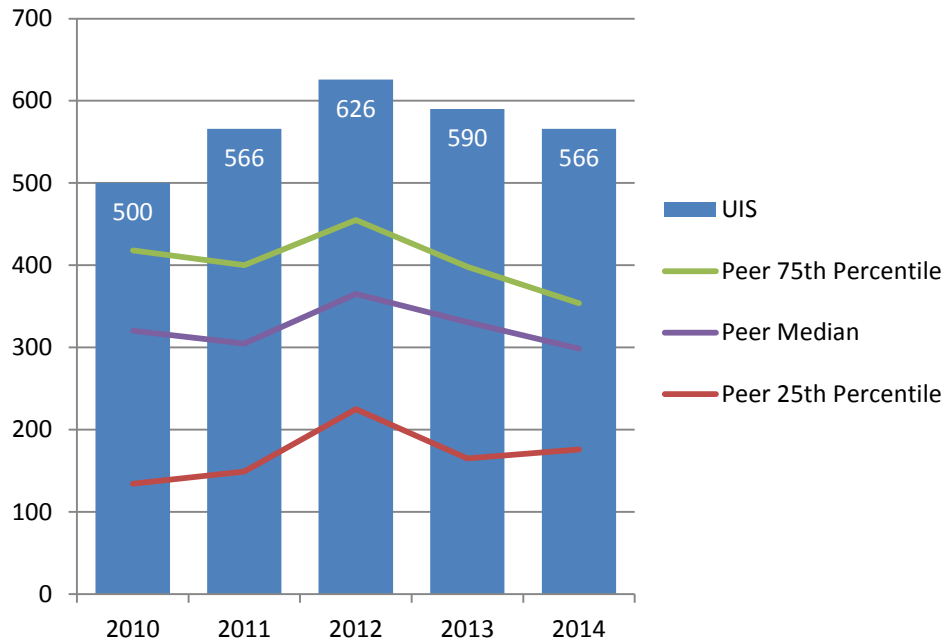


University of Illinois at Springfield grants fewer undergraduate degrees than its peer median.

Note: Only includes bachelor's degrees, excludes associate degrees and certificates. Degrees awarded from July 1 to June 30 of each fiscal year.



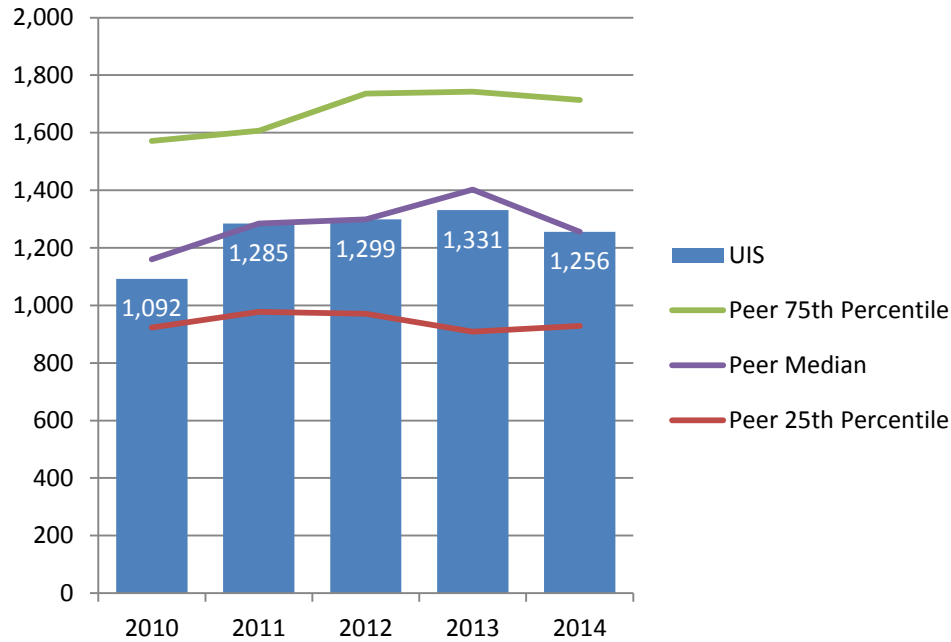
# Number of Degrees Granted – Graduate and Professional FY 2010 – FY 2014



University of Illinois at Springfield grants more graduate degrees than its peer median.

Note: Only includes master's and doctoral degrees, excludes certificates. Degrees awarded from July 1 to June 30 of each fiscal year.

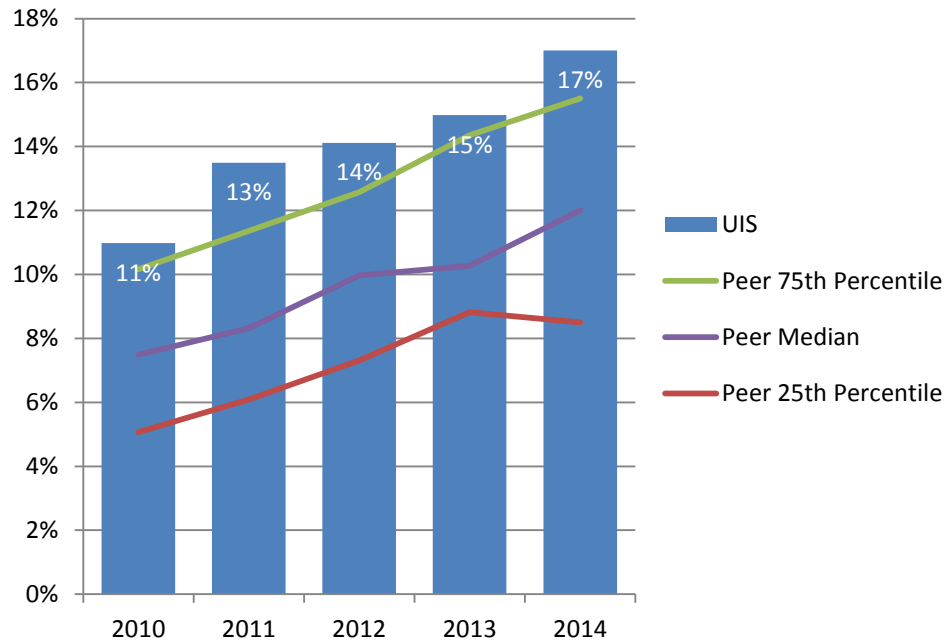
# Number of Degrees Granted – Total Degrees FY 2010 – FY 2014



In FY 2014, University of Illinois at Springfield granted a similar number of degrees as its peer median.

Note: Only includes bachelor's, master's and doctoral degrees; excludes associate degrees and certificates. Degrees awarded from July 1 to June 30 of each fiscal year.

# Percent Bachelor's Degrees Granted to Students from Underrepresented\* Groups FY 2010 – FY 2014

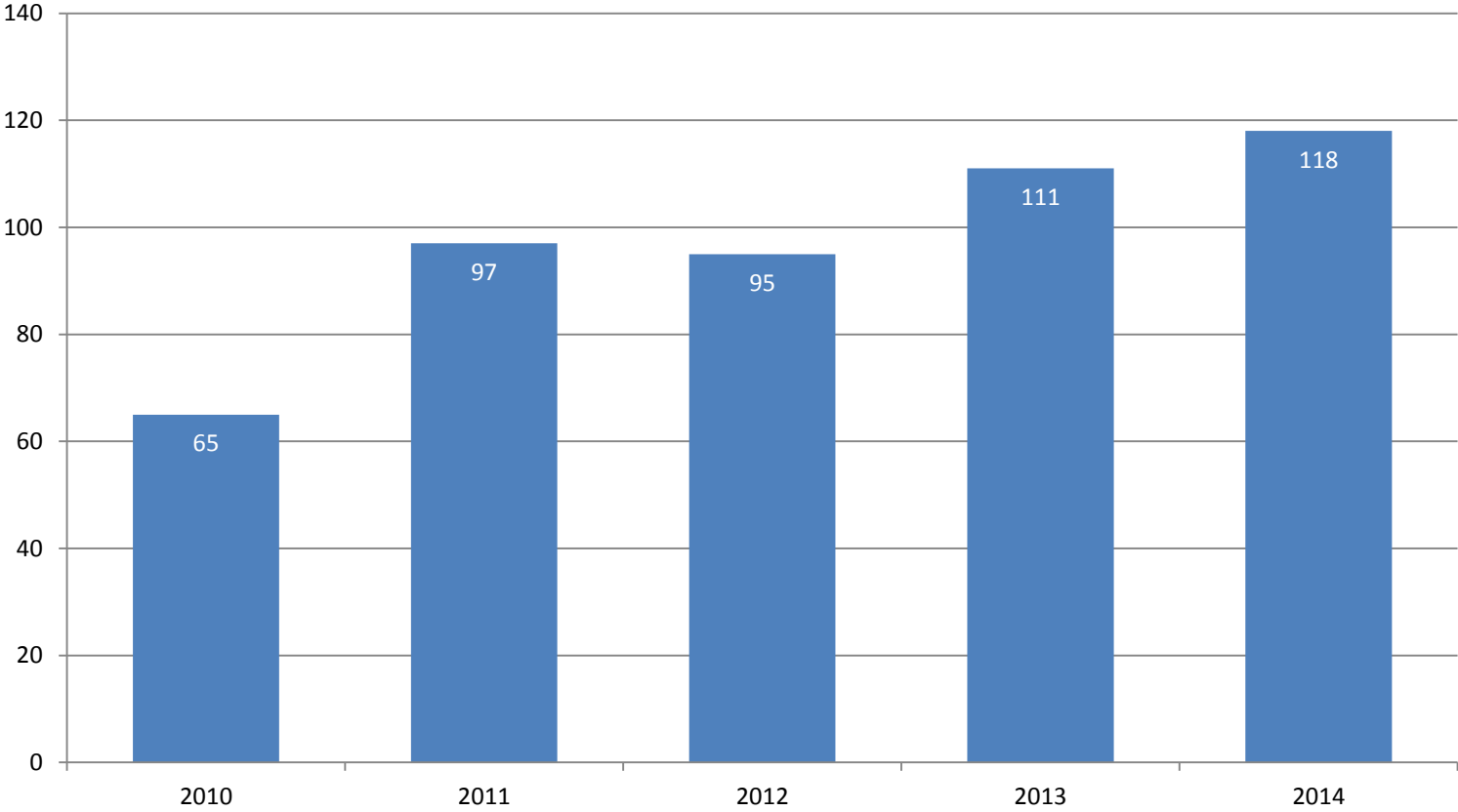


The percent of undergraduate degrees awarded to students from underrepresented groups at the University of Illinois at Springfield is higher than its peer median.

\* Includes Black, Hispanic, American Indian, Native Hawaiian/Other Pacific Islander, and multi-racial students.

Note: Only includes bachelor's degrees, excludes associate degrees and certificates. Degrees awarded from July 1 to June 30 of each fiscal year.

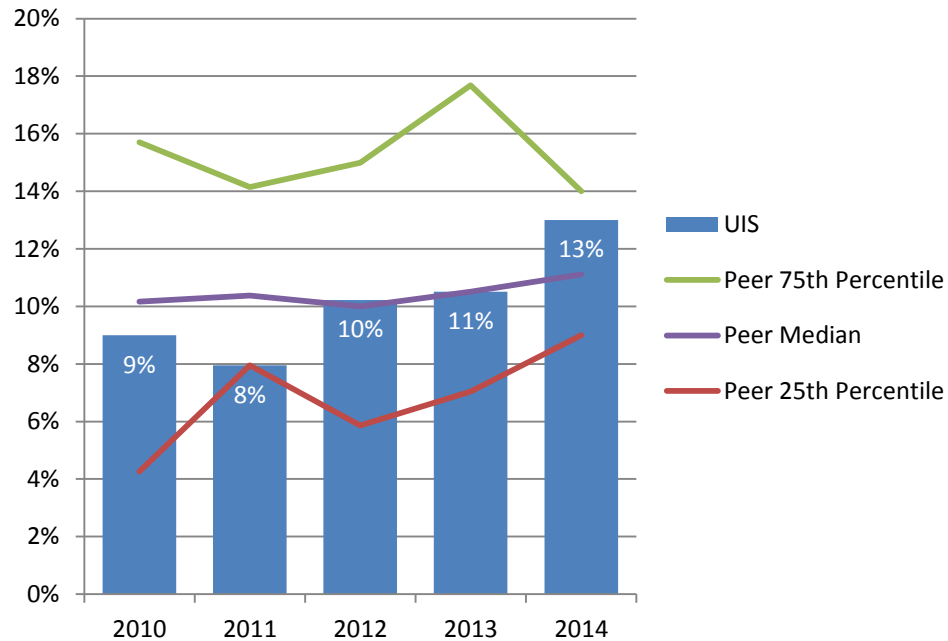
# Number of Bachelor's Degrees Granted to Students from Underrepresented\* Groups FY 2010 – FY 2014



\* Includes Black, Hispanic, American Indian, Native Hawaiian/Other Pacific Islander, and multi-racial students.

Note: Only includes bachelor's degrees, excludes associate degrees and certificates. Degrees awarded from July 1 to June 30 of each fiscal year.

# Percent Graduate and Professional Degrees Granted to Students from Underrepresented\* Groups FY 2010 – FY 2014

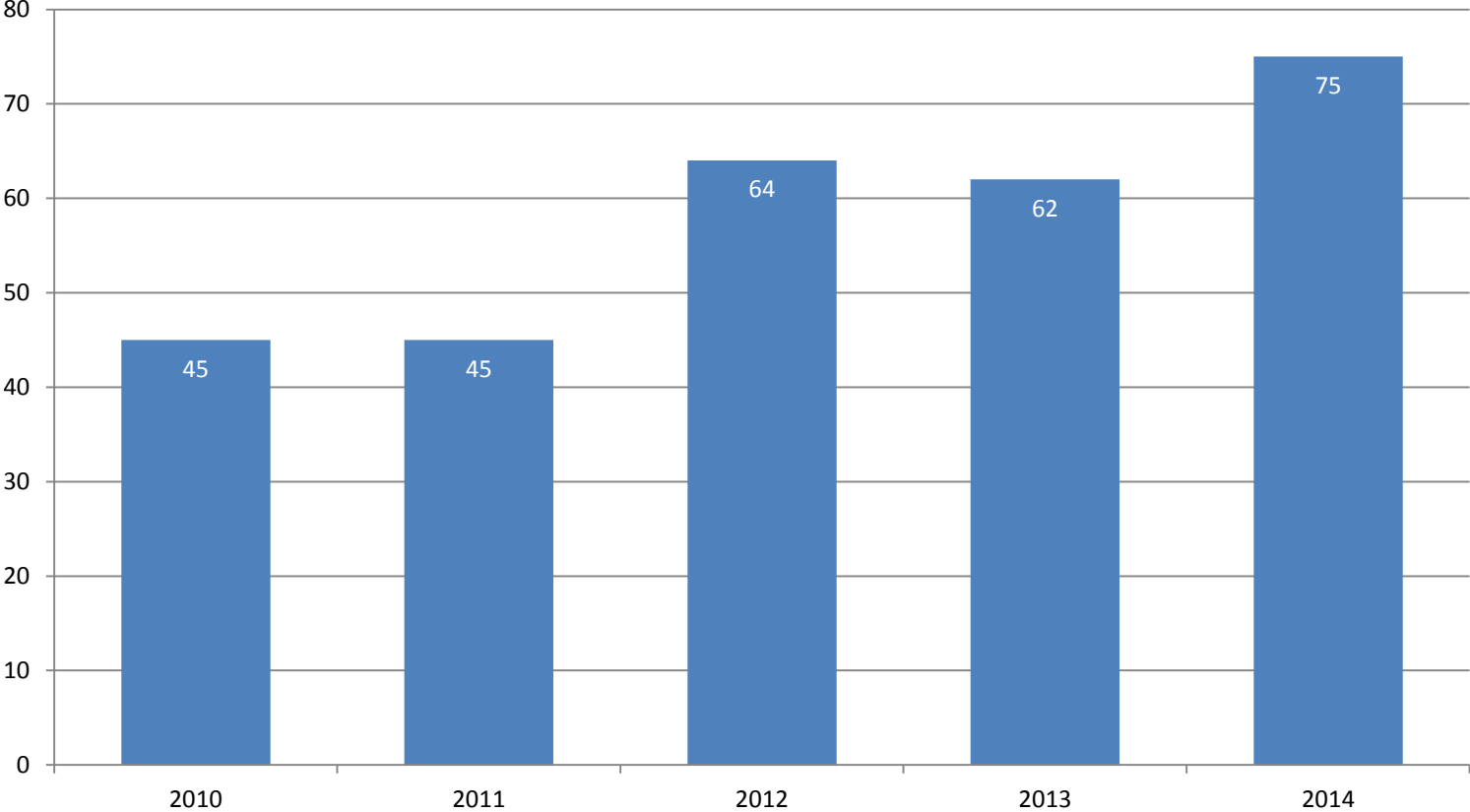


In FY 2014, the percent of graduate degrees awarded to students from underrepresented groups at the University of Illinois at Springfield is higher than its peer median.

\* Includes Black, Hispanic, American Indian, Native Hawaiian/Other Pacific Islander, and multi-racial students.

Note: Only includes master's and doctoral degrees, excludes certificates. Degrees awarded from July 1 to June 30 of each fiscal year.

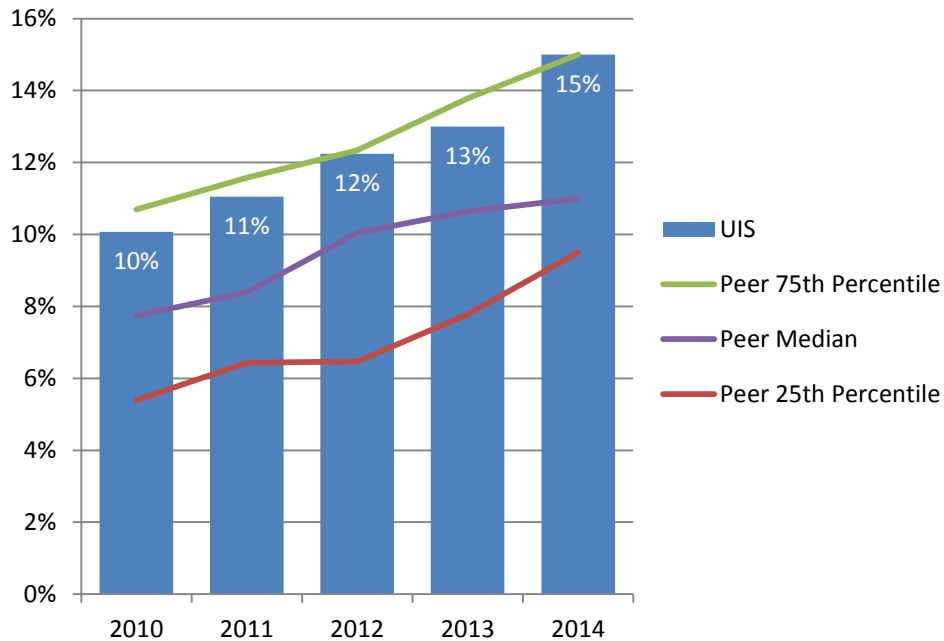
# Number of Graduate and Professional Degrees Granted to Students from Underrepresented\* Groups FY 2010 – FY 2014



\* Includes Black, Hispanic, American Indian, Native Hawaiian/Other Pacific Islander, and multi-racial students.

Note: Only includes master's and doctoral degrees, excludes certificates. Degrees awarded from July 1 to June 30 of each fiscal year.

# Percent Total Degrees Granted to Students from Underrepresented\* Groups FY 2010 – FY 2014

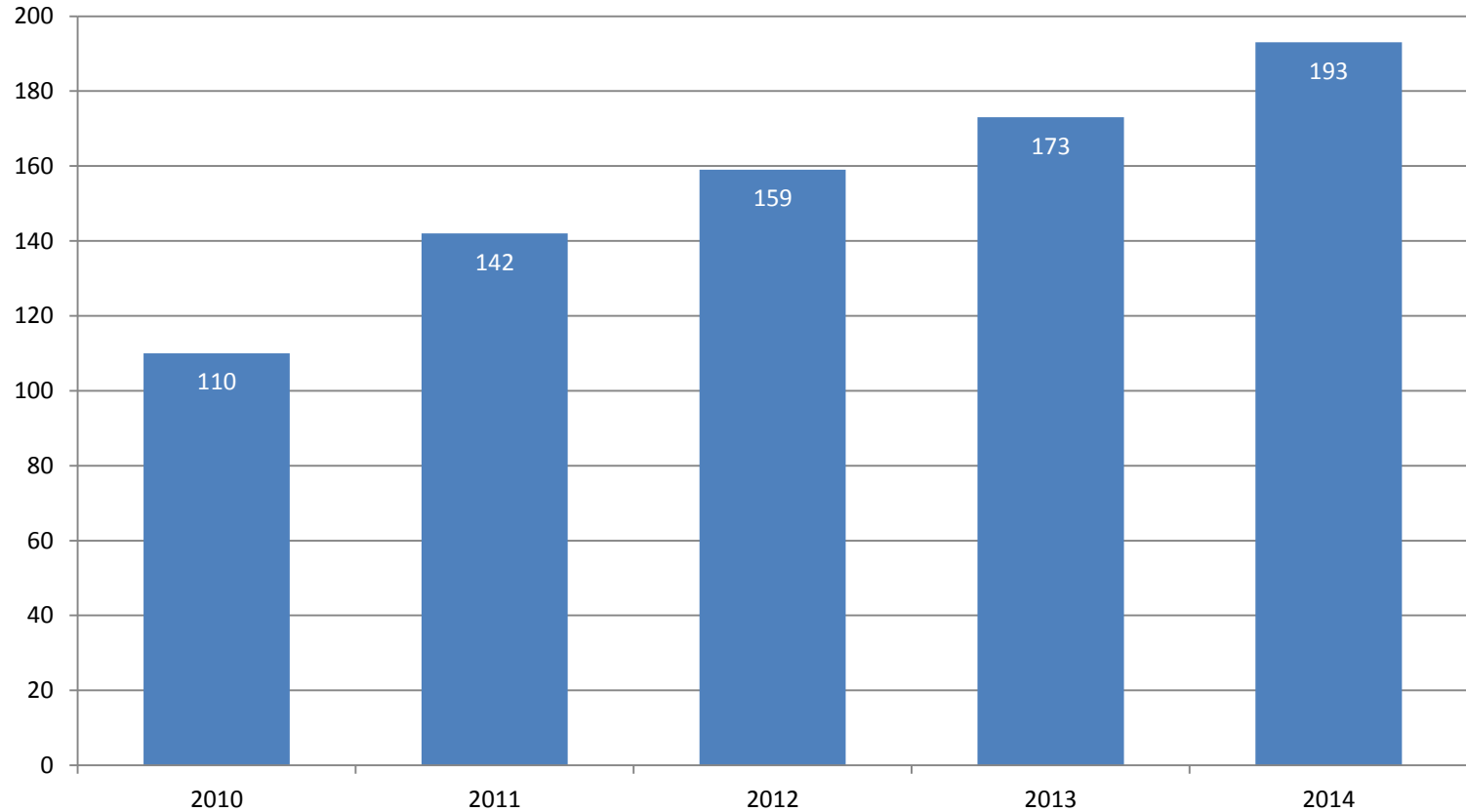


The percent of all degrees awarded to students from underrepresented groups at the University of Illinois is higher than its peer median.

\* Includes Black, Hispanic, American Indian, Native Hawaiian/Other Pacific Islander, and multi-racial students.

Note: Only includes bachelor's, master's and doctoral degrees; excludes associate degrees and certificates. Degrees awarded from July 1 to June 30 of each fiscal year.

# Number of Total Degrees Granted to Students from Underrepresented\* Groups FY 2010 – FY 2014



\* Includes Black, Hispanic, American Indian, Native Hawaiian/Other Pacific Islander, and multi-racial students.

Note: Only includes bachelor's, master's and doctoral degrees; excludes associate degrees and certificates. Degrees awarded from July 1 to June 30 of each fiscal year.



# Degrees Awarded: Goals



- Campus goal
- Campus goal

# Action Items



- Campus action item
- ★ Campus action item

- time-frame (1-2 year)
- ★ time-frame (3-5 year)

# Questions?

