

University of Illinois at Springfield

Dashboard Indicators

**ENROLLMENTS, GRADUATION AND RETENTION RATES,
AND DEGREES AWARDED UPDATES BY:
UNIVERSITY OFFICE FOR PLANNING AND BUDGETING
OCTOBER 1, 2014**

**PRESENTED BY:
CHANCELLOR SUSAN J. KOCH
NOVEMBER 13, 2014**

Peer Groups



University of Illinois at Springfield

Auburn University-Montgomery (AL)

Clark University* (Worcester, MA)

College of Charleston (SC)

Georgia College and State University (Milledgeville, GA)

Iona College* (New Rochelle, NY)

Lake Superior State University (Sault Ste. Marie, MI)

Marist College* (Poughkeepsie, NY)

Northern Michigan University (Marquette, MI)

Shippensburg University of Pennsylvania

State University of New York at Brockport

Trinity University (San Antonio, TX)*

Union College (Schenectady, NY)*

University of South Dakota

University of Wisconsin-Green Bay

* Private Institution

Enrollments



University of Illinois at Springfield and Peer Institutions Fall Term Enrollment

Fall 2008 – Fall 2014

Institution	All Student Total						Undergraduate						Graduate and Professional					
	2008	2009	2010	2011	2012	2013	2008	2009	2010	2011	2012	2013	2008	2009	2010	2011	2012	2013
University of Illinois at Springfield	4,711	4,977	5,174	5,137	5,048	5,137	2,889	3,027	3,197	3,112	3,054	3,039	1,822	1,950	1,977	2,025	1,994	2,098
Auburn University - Montgomery	5,296	5,567	5,817	5,305	5,005		4,469	4,695	4,829	4,403	4,240		827	872	988	902	765	
Clark University	3,330	3,416	3,451	3,462	3,503		2,380	2,333	2,317	2,311	2,352		950	1,083	1,134	1,151	1,151	
College of Charleston	11,367	11,772	11,532	11,649	11,723		9,784	10,147	10,121	10,461	10,506		1,583	1,625	1,411	1,188	1,217	
Georgia College and State University	6,506	6,633	6,737	6,636	6,444		5,490	5,644	5,715	5,635	5,568		1,016	989	1,022	1,001	876	
Iona College	4,375	4,248	4,123	4,065	4,241		3,460	3,344	3,256	3,189	3,462		915	904	867	876	779	
Lake Superior State University	2,575	2,588	2,662	2,805	2,590		2,557	2,568	2,588	2,727	2,582		18	20	74	78	8	
Marist College	5,828	6,179	6,140	6,303	6,377		5,031	5,330	5,189	5,442	5,560		797	849	951	861	817	
Northern Michigan University	9,347	9,428	9,417	9,405	9,159		8,598	8,684	8,719	8,712	8,474		749	744	698	693	685	
Shippensburg University of Pennsylvania	7,942	8,253	8,326	8,183	7,724		6,733	6,942	7,143	7,132	6,712		1,209	1,311	1,183	1,051	1,012	
SUNY College at Brockport	8,275	8,490	8,589	8,413	8,271		6,970	7,119	7,297	7,166	7,133		1,305	1,371	1,292	1,247	1,138	
Trinity University	2,703	2,693	2,498	2,535	2,458		2,489	2,487	2,296	2,331	2,286		214	206	202	204	172	
Union College	2,240	2,194	2,197	2,220	2,241		2,240	2,194	2,197	2,220	2,241		--	--	--	--	--	
University of South Dakota	9,291	9,617	10,151	9,970	10,284		6,958	7,098	7,220	7,473	7,690		2,333	2,519	2,931	2,497	2,594	
University of Wisconsin - Green Bay	6,286	6,638	6,636	6,671	6,801		6,088	6,369	6,389	6,451	6,622		198	269	247	220	179	

UIS Fall 2014 Total Count

All Student Total 5,431

Undergraduate 3,038

Graduate 2,393

Data Source: IPEDS Data Center. Includes on-and off-campus enrollments.

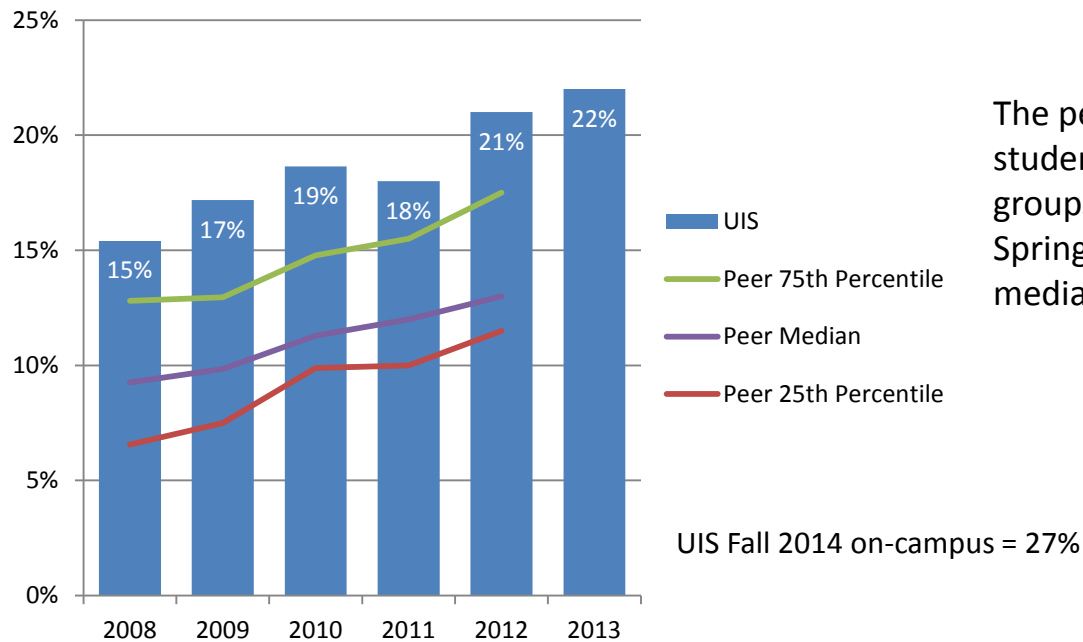
University of Illinois at Springfield and Peer Institutions First-Time Freshmen Enrollment Fall 2008 – Fall 2013

	2008	2009	2010	2011	2012	2013
University of Illinois at Springfield	309	288	294	241	270	316
Auburn University - Montgomery	821	877	930	831	679	
Clark University	591	550	578	546	594	
College of Charleston	1,956	2,143	2,010	2,334	2,138	
Georgia College and State University	1,179	1,206	1,203	1,209	1,311	
Iona College	923	792	871	812	722	
Lake Superior State University	519	457	514	499	439	
Marist College	1,022	1,041	1,088	1,174	1,098	
Northern Michigan University	1,810	1,757	1,659	1,745	1,638	
Shippensburg University of Pennsylvania	1,724	1,679	1,712	1,752	1,485	
The College at Brockport	994	1,090	1,048	1,050	1,085	
Trinity University (San Antonio, TX)	655	640	587	636	596	
Union College (Schenectady, NY)	580	520	554	572	591	
University of South Dakota	1,162	1,125	1,175	1,248	1,353	
University of Wisconsin - Green Bay	1,017	1,049	906	910	921	

UIS Fall 2014 on-campus first-time freshmen = 305

Data Source: IPEDS Data Center.

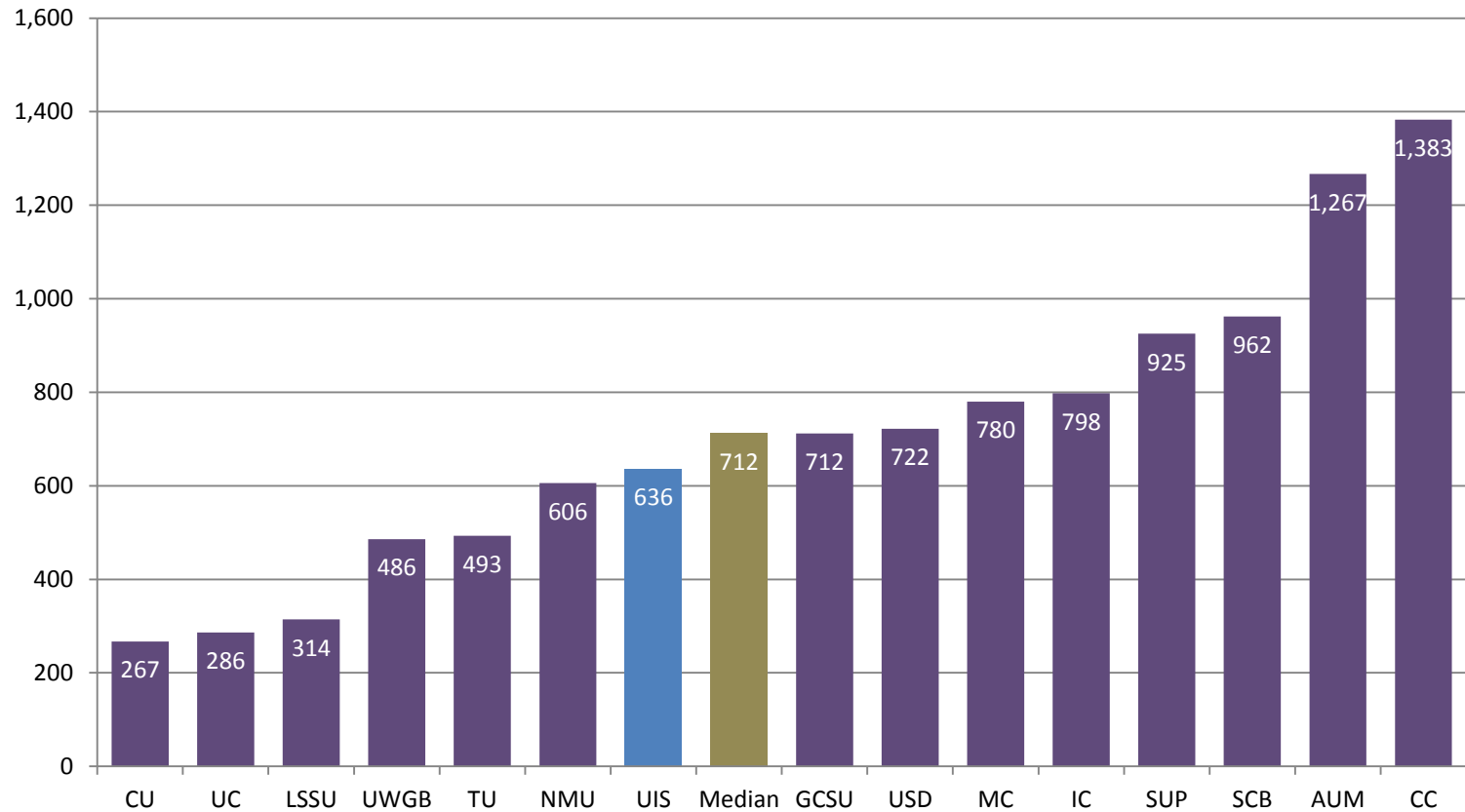
Percent Enrolled Undergraduate Students from Underrepresented* Groups Fall 2008 – Fall 2013



The percent of undergraduate students from underrepresented groups at the University of Illinois at Springfield is higher than the peer median.

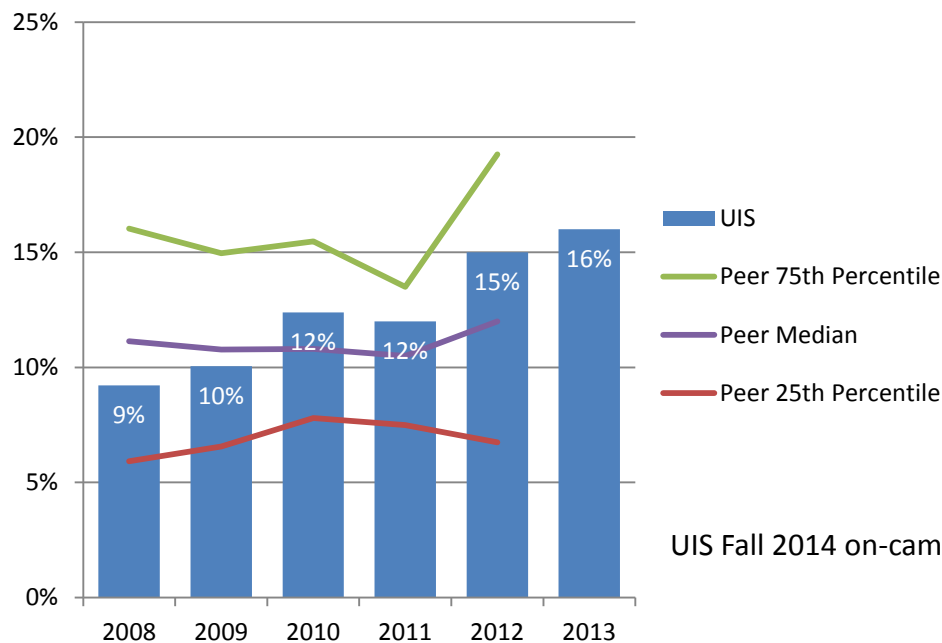
* Includes Black, Hispanic, American Indian, Native Hawaiian/Other Pacific Islander, and multi-racial students.

Enrolled Undergraduate Students from Underrepresented* Groups Fall 2012



* Includes Black, Hispanic, American Indian, Native Hawaiian/Other Pacific Islander, and multi-racial students.

Percent Enrolled Graduate and Professional Students from Underrepresented* Groups Fall 2008 – Fall 2013

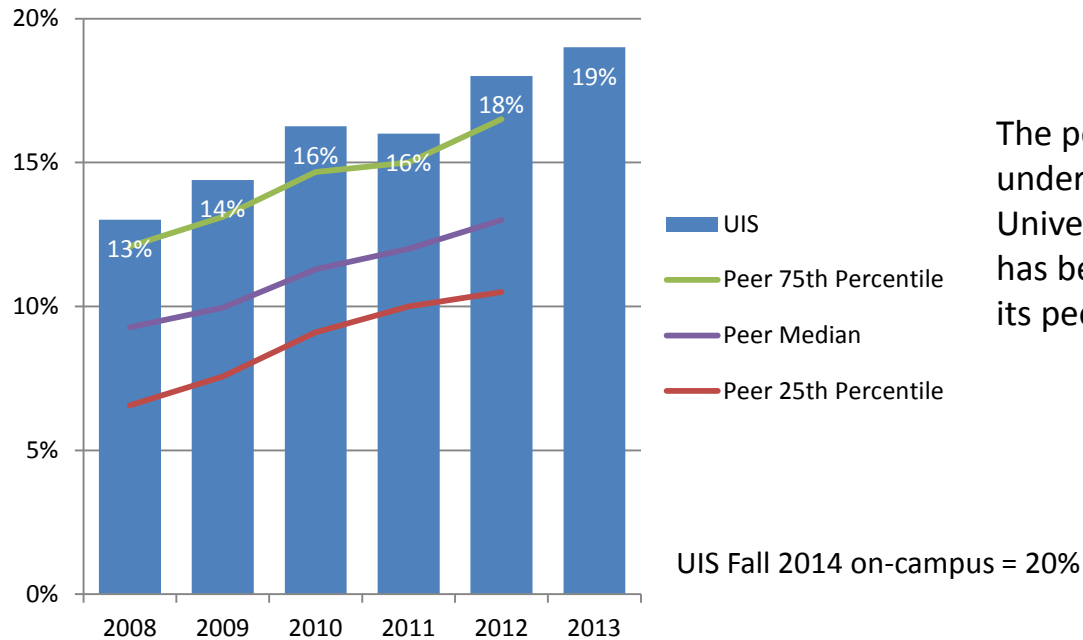


Since 2010, the percent of graduate and professional students from underrepresented groups at the University of Illinois at Springfield was higher than its peer median.

UIS Fall 2014 on-campus = 9%

* Includes Black, Hispanic, American Indian, Native Hawaiian/Other Pacific Islander, and multi-racial students.

Percent All Enrolled Students from Underrepresented* Groups Fall 2008 – Fall 2013



The percent of total students from underrepresented groups at the University of Illinois at Springfield has been consistently higher than its peer median.

* Includes Black, Hispanic, American Indian, Native Hawaiian/Other Pacific Islander, and multi-racial students.

Enrollments: Goals



- Campus goal
- Campus goal

Action Items



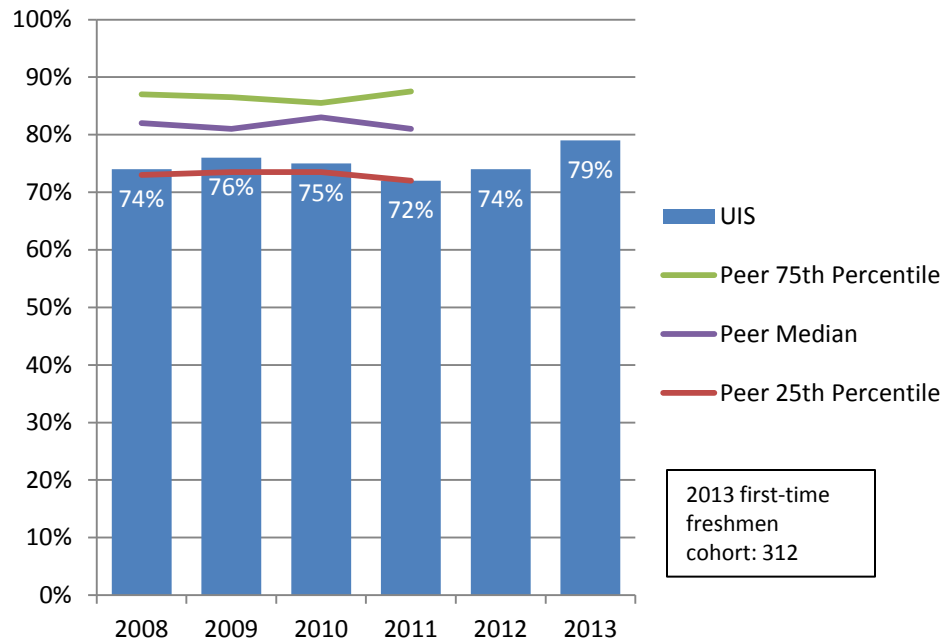
- Campus action item
- ★ Campus action item

- time-frame (1-2 year)
- ★ time-frame (3-5 year)

Graduation and Retention Rates

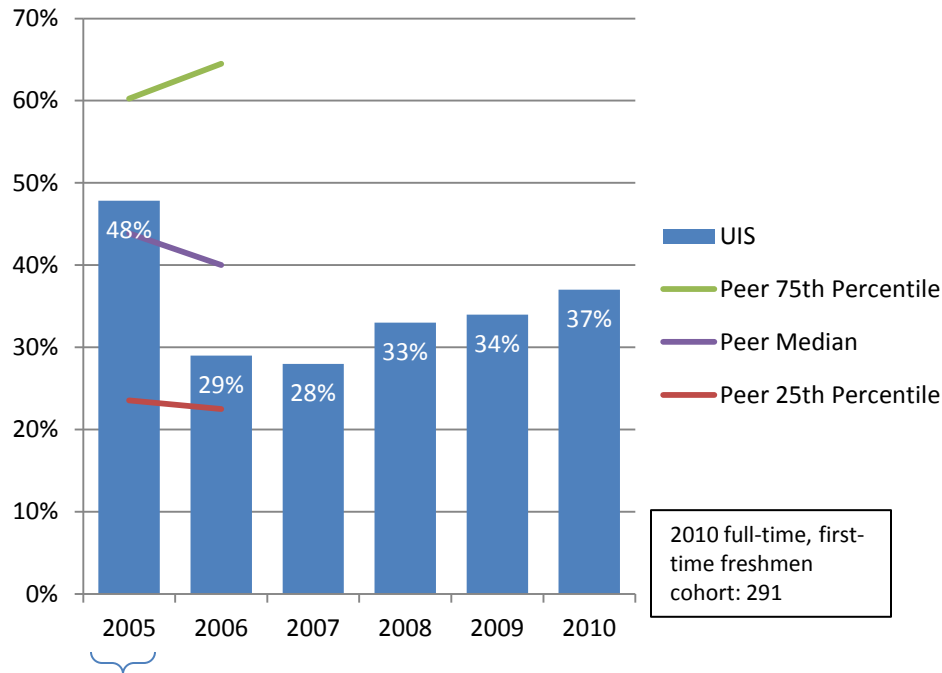


Freshman to Sophomore One-Year Retention Rates 2008 – 2013 Cohorts



Although improving since 2007, freshmen retention rate at University of Illinois at Springfield is lower than the peer median.

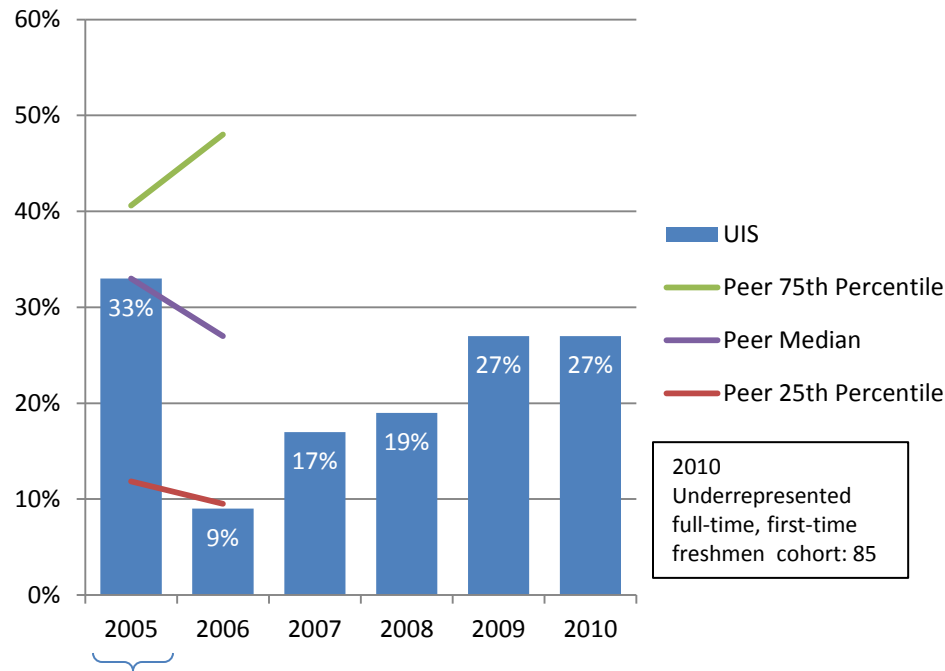
First-Time Freshmen Four-Year Graduation Rates 2005 – 2010 Cohorts



Capital Scholars only.

University of Illinois at Springfield graduates a lower percent of undergraduate students within four years compared to its peer median.

Percent First-Time Freshmen from Underrepresented* Groups Four-Year Graduation Rates 2005 – 2010 Cohorts

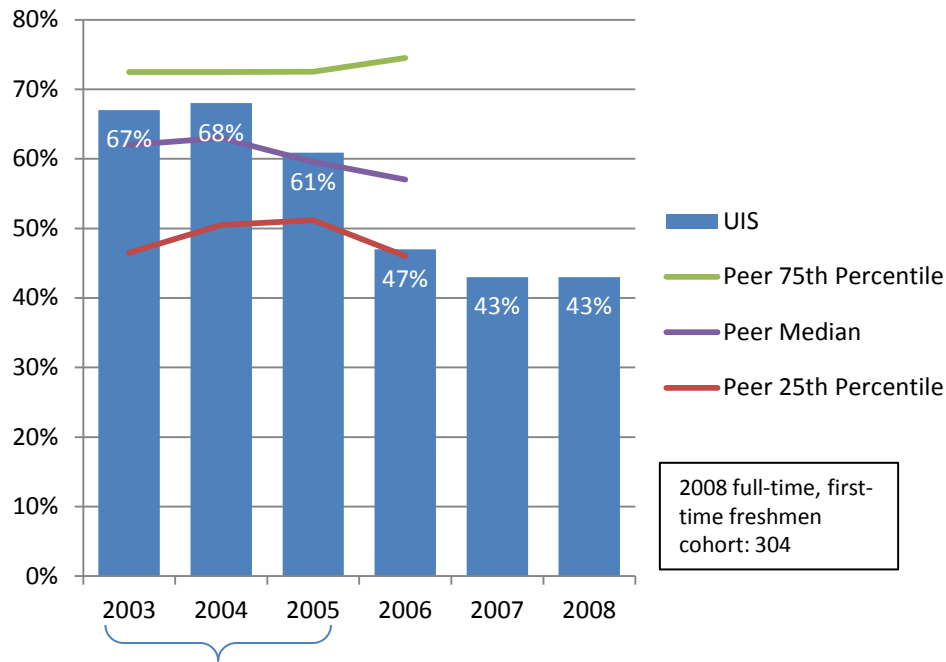


Compared to the peer median, the University of Illinois at Springfield graduates a lower percent of students from underrepresented groups within four years.

Capital Scholars only.

* Includes Black, Hispanic, American Indian, Native Hawaiian/Other Pacific Islander, and multi-racial students.

First-Time Freshmen Six-Year Graduation Rates 2003 – 2008 Cohorts



Capital Scholars only.

2008 full-time, first-time freshmen cohort: 304

University of Illinois at Springfield graduates a lower percent of students within six years compared to its peer median.

Graduation and Retention Rates: Goals



- Campus goal
- Campus goal

Action Items



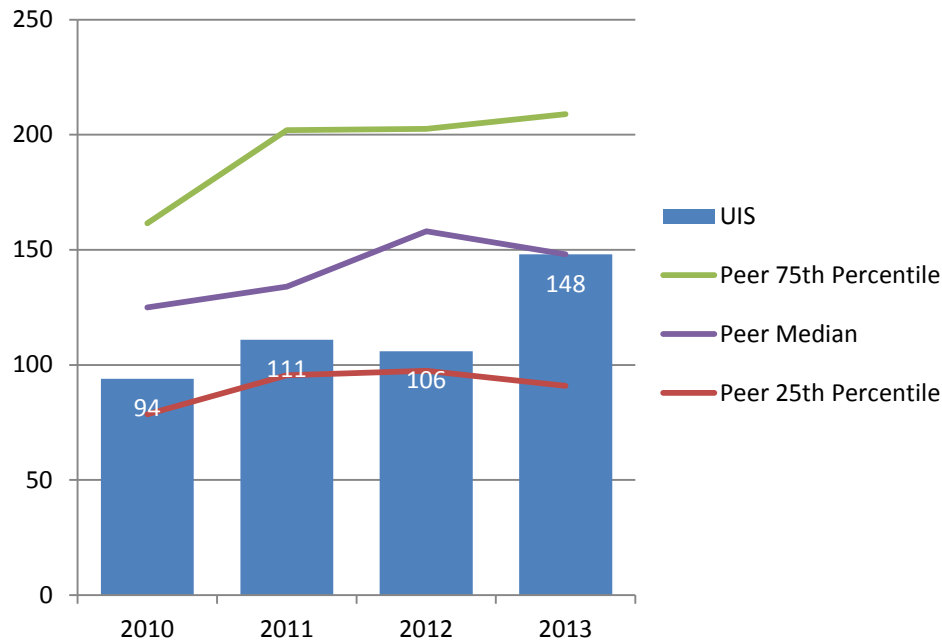
- Campus action item
- ★ Campus action item

- time-frame (1-2 year)
- ★ time-frame (3-5 year)

Degrees Awarded



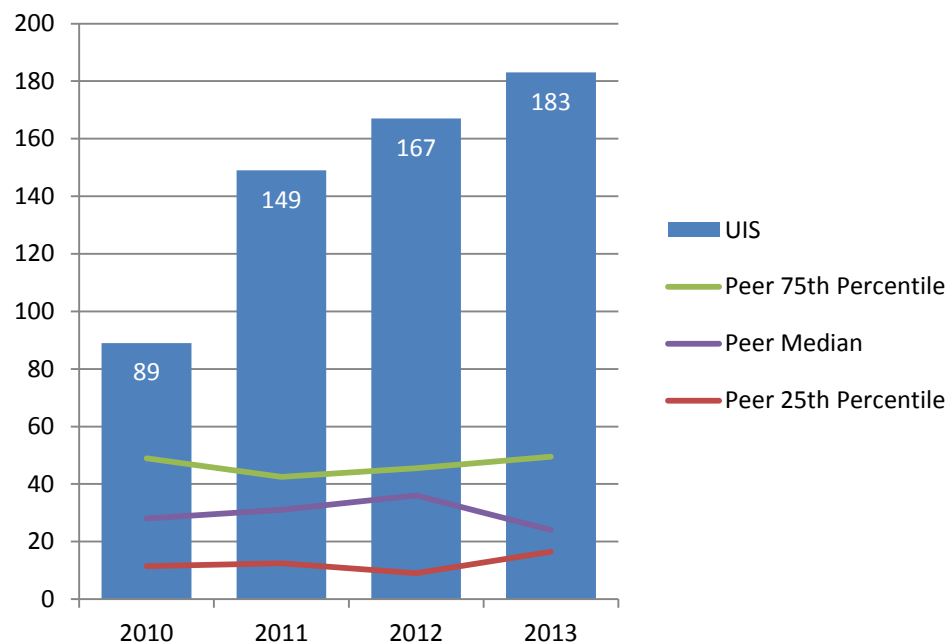
Number of Degrees Granted in STEM* Fields - Bachelor's FY 2010 – FY 2013



In FY 2013, University of Illinois at Springfield granted a similar number of undergraduate degrees in STEM fields as its peer median.

* Science, Technology, Engineering, and Mathematics.

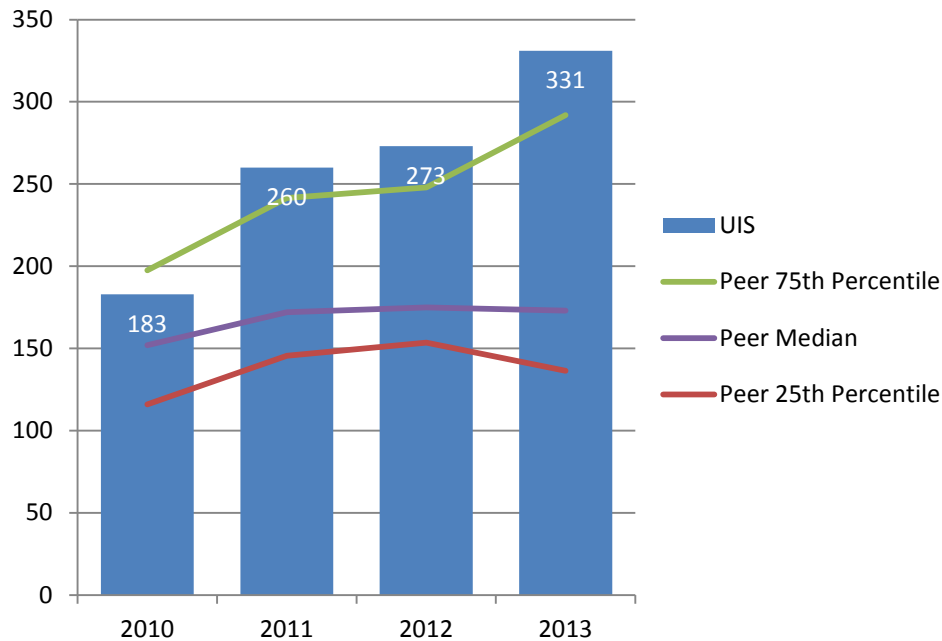
Number of Degrees Granted in STEM* Fields - Master's and Doctorate FY 2010 – FY 2013



University of Illinois at Springfield grants more graduate degrees in STEM fields than its peer median.

* Science, Technology, Engineering, and Mathematics.

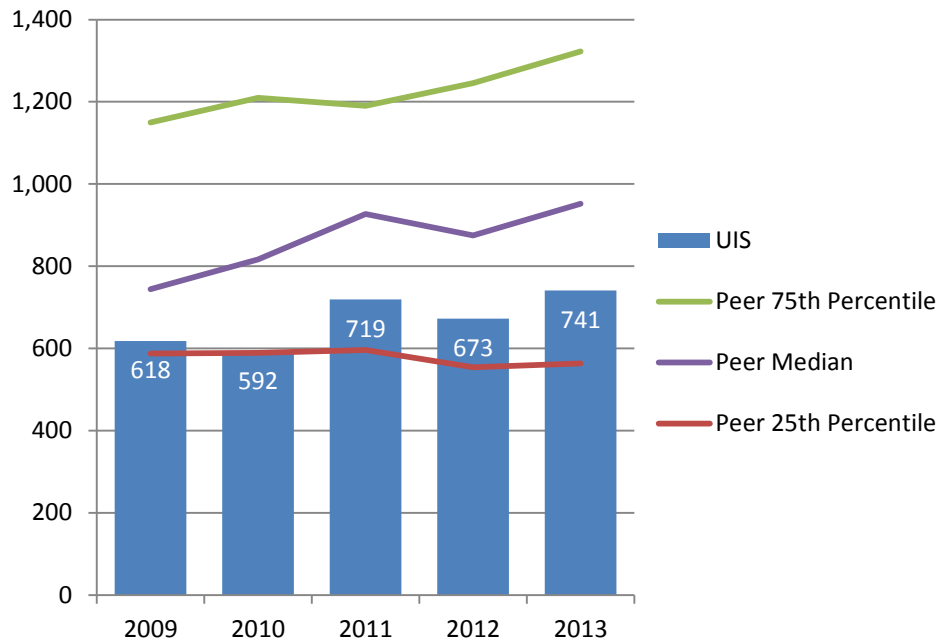
Number of Degrees Granted in STEM* Fields - Total Degrees FY 2010 – FY 2013



University of Illinois at Springfield grants more degrees in STEM fields than its peer median.

* Science, Technology, Engineering, and Mathematics.

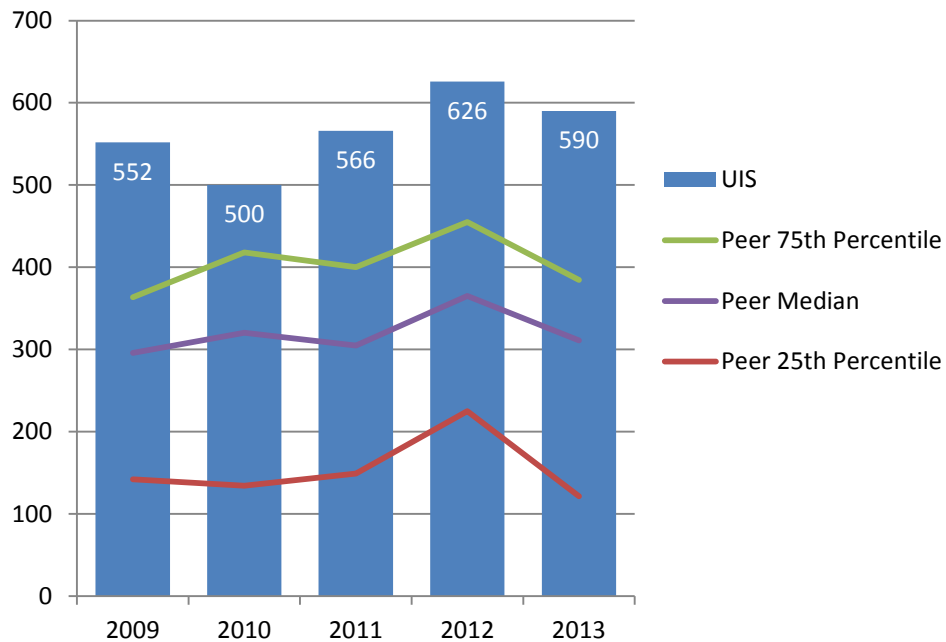
Number of Degrees Granted – Bachelor's FY 2008 – FY 2013



University of Illinois at Springfield grants fewer undergraduate degrees than its peer median.

Note: Only includes bachelor's degrees, excludes associate degrees and certificates. Degrees awarded from July 1 to June 30 of each fiscal year.

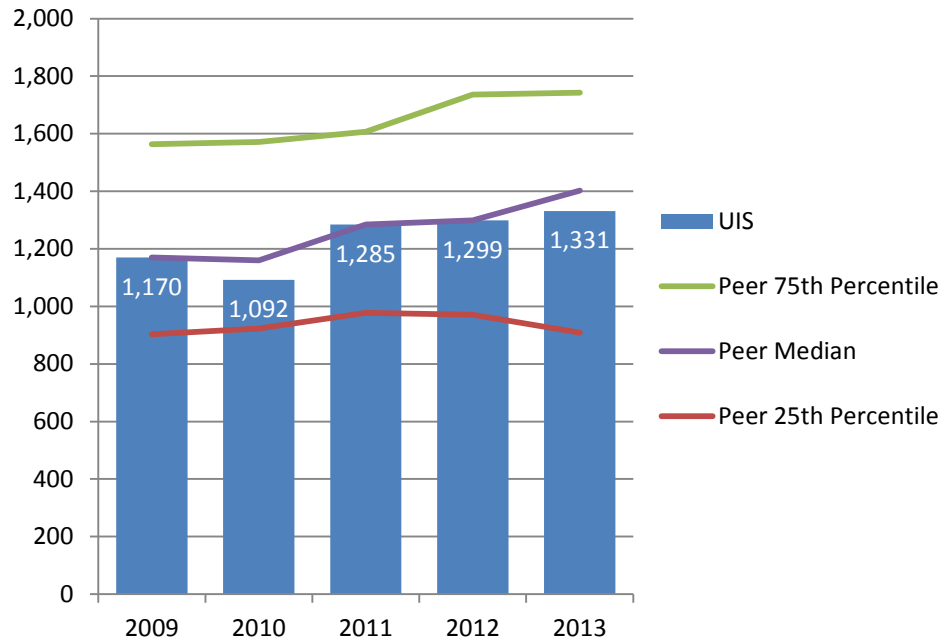
Number of Degrees Granted – Graduate and Professional FY 2008 – FY 2013



University of Illinois at Springfield grants more graduate degrees than its peer median.

Note: Only includes master's and doctoral degrees, excludes certificates. Degrees awarded from July 1 to June 30 of each fiscal year.

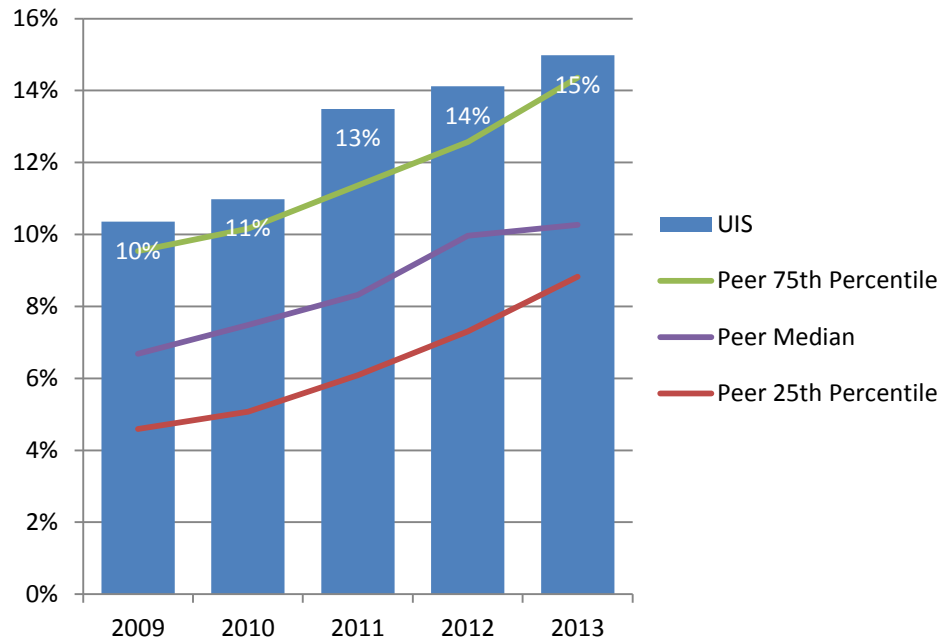
Number of Degrees Granted – Total Degrees FY 2008 – FY 2013



The number of degrees granted at University of Illinois at Springfield is on par with its peer median.

Note: Only includes bachelor's, master's and doctoral degrees; excludes associate degrees and certificates. Degrees awarded from July 1 to June 30 of each fiscal year.

Percent Bachelor's Degrees Granted to Students from Underrepresented* Groups FY 2009 – FY 2013

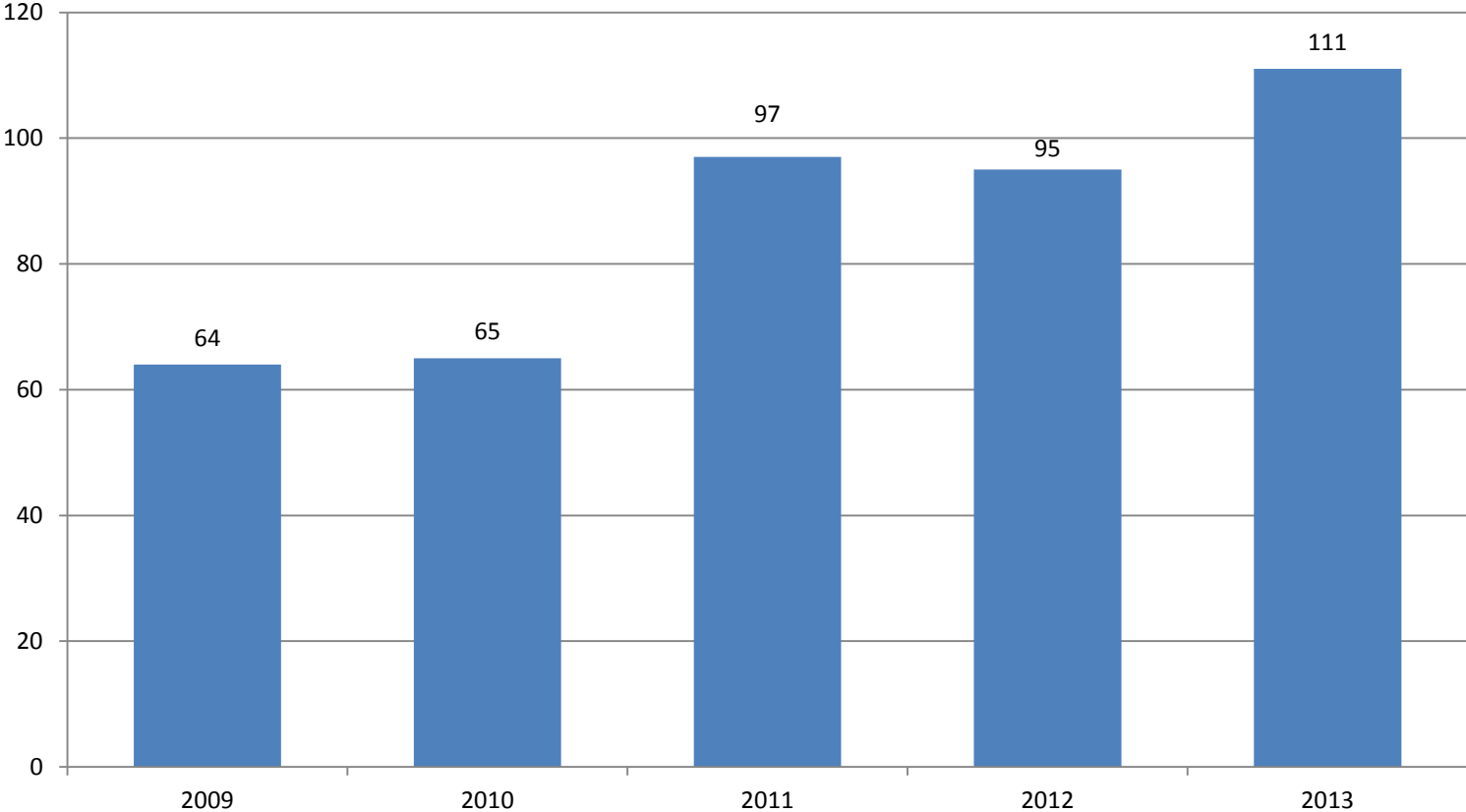


The percent of undergraduate degrees awarded to students from underrepresented groups at the University of Illinois at Springfield is higher than its peer median.

* Includes Black, Hispanic, American Indian, Native Hawaiian/Other Pacific Islander, and multi-racial students.

Note: Only includes bachelor's degrees, excludes associate degrees and certificates. Degrees awarded from July 1 to June 30 of each fiscal year.

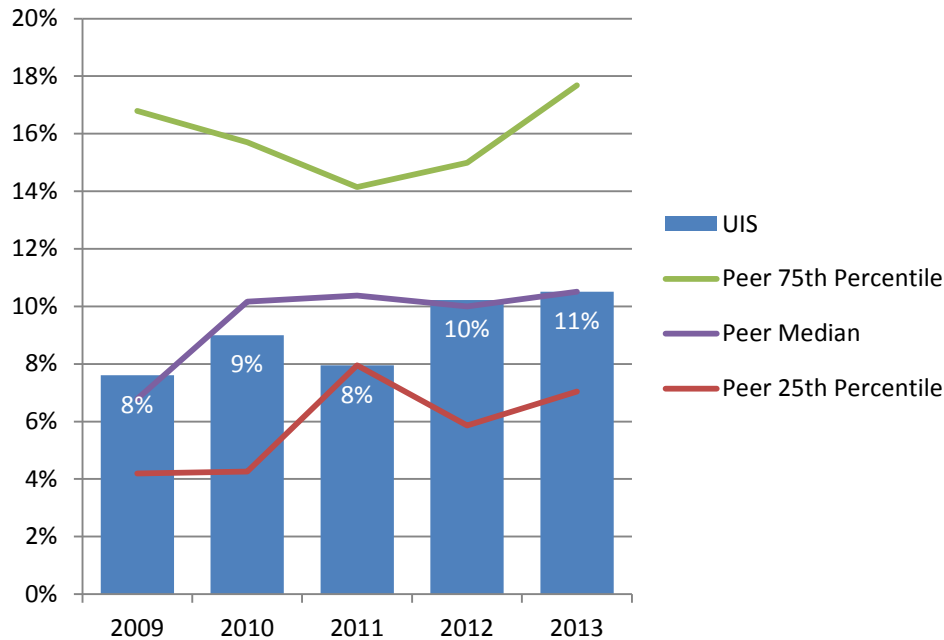
Number of Bachelor's Degrees Granted to Students from Underrepresented* Groups FY 2009 – FY 2013



* Includes Black, Hispanic, American Indian, Native Hawaiian/Other Pacific Islander, and multi-racial students.

Note: Only includes bachelor's degrees, excludes associate degrees and certificates. Degrees awarded from July 1 to June 30 of each fiscal year.

Percent Graduate and Professional Degrees Granted to Students from Underrepresented* Groups FY 2009 – FY 2013

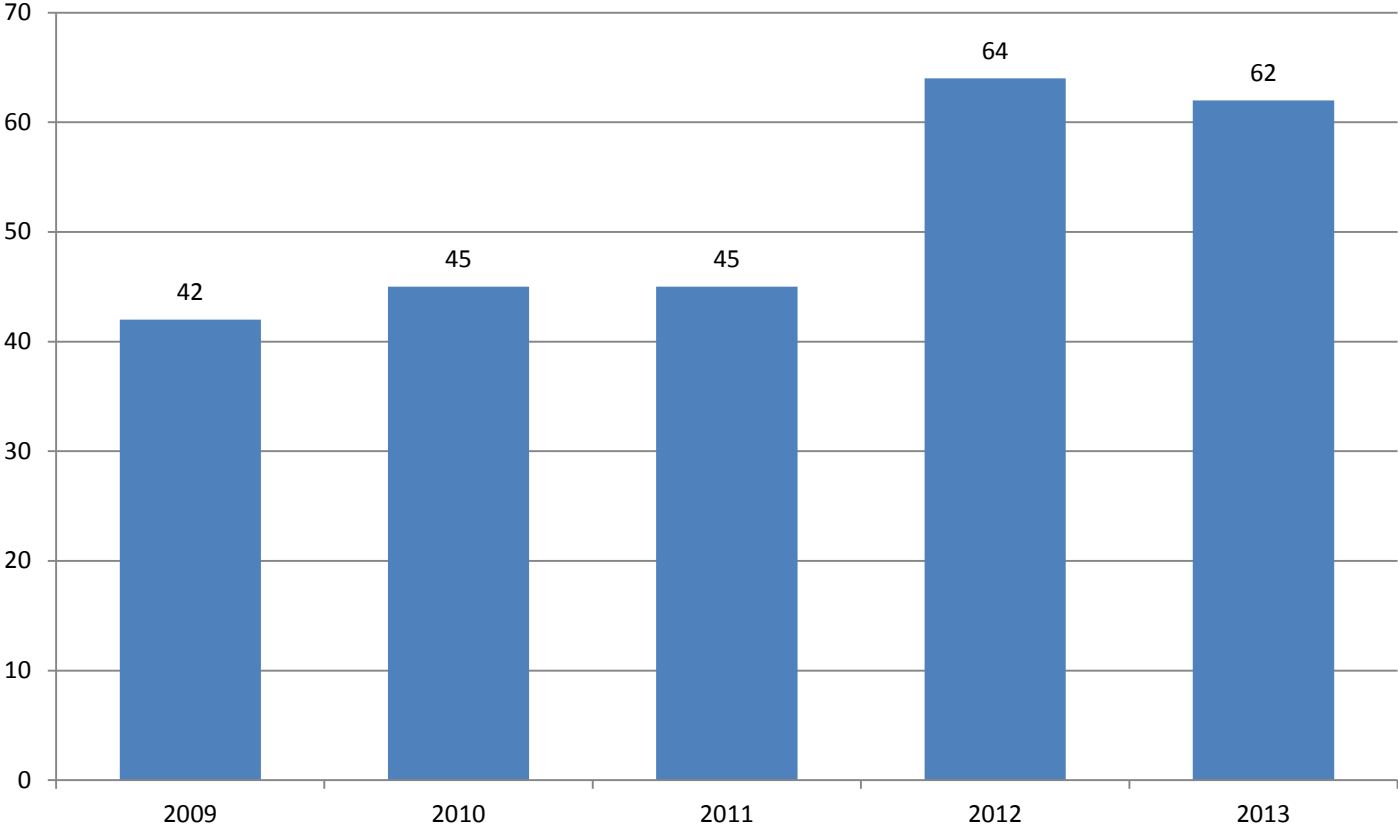


The percent of graduate degrees awarded to students from underrepresented groups at the University of Illinois at Springfield is on par with its peer median.

* Includes Black, Hispanic, American Indian, Native Hawaiian/Other Pacific Islander, and multi-racial students.

Note: Only includes master's and doctoral degrees, excludes certificates. Degrees awarded from July 1 to June 30 of each fiscal year.

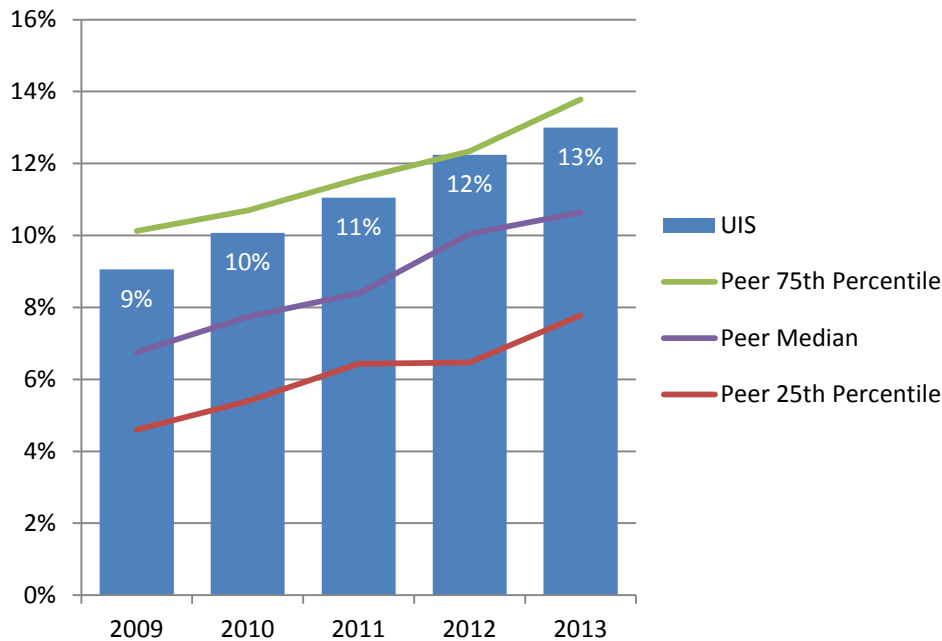
Number of Graduate and Professional Degrees Granted to Students from Underrepresented* Groups FY 2009 – FY 2013



* Includes Black, Hispanic, American Indian, Native Hawaiian/Other Pacific Islander, and multi-racial students.

Note: Only includes master's and doctoral degrees, excludes certificates. Degrees awarded from July 1 to June 30 of each fiscal year.

Percent Total Degrees Granted to Students from Underrepresented* Groups FY 2009 – FY 2013

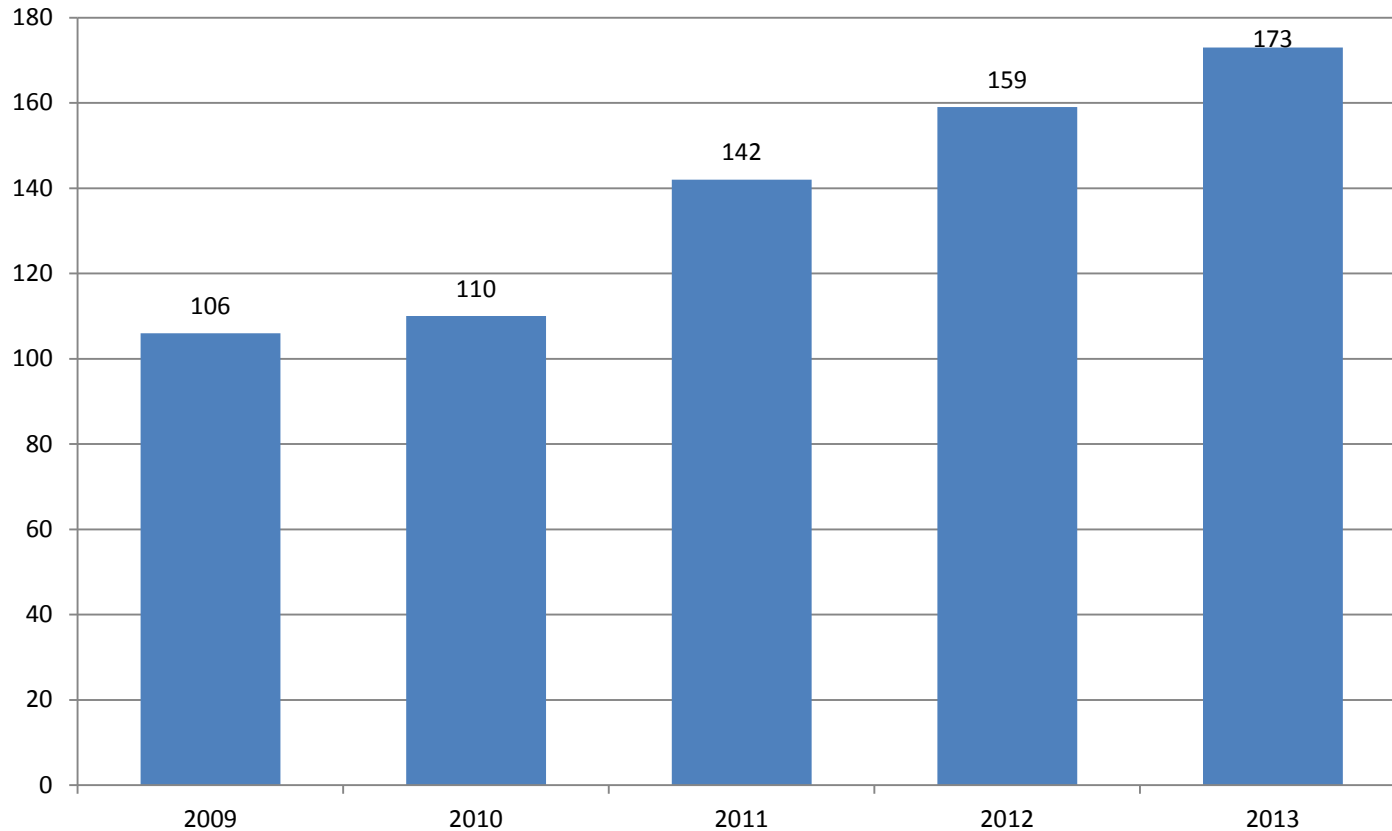


The percent of all degrees awarded to students from underrepresented groups at the University of Illinois is higher than its peer median.

* Includes Black, Hispanic, American Indian, Native Hawaiian/Other Pacific Islander, and multi-racial students.

Note: Only includes bachelor's, master's and doctoral degrees; excludes associate degrees and certificates. Degrees awarded from July 1 to June 30 of each fiscal year.

Number of Total Degrees Granted to Students from Underrepresented* Groups FY 2009 – FY 2013



* Includes Black, Hispanic, American Indian, Native Hawaiian/Other Pacific Islander, and multi-racial students.

Note: Only includes bachelor's, master's and doctoral degrees; excludes associate degrees and certificates. Degrees awarded from July 1 to June 30 of each fiscal year.

Degrees Awarded: Goals



- Campus goal
- Campus goal

Action Items



- Campus action item
- ★ Campus action item

- time-frame (1-2 year)
- ★ time-frame (3-5 year)

Questions?

