

Reported to the Board of Trustees  
November 15, 2018

# University of Illinois at Chicago



## Performance Metrics

ENROLLMENTS, GRADUATION AND RETENTION RATES,  
DEGREES AWARDED, AND GRADUATE EDUCATION UPDATES BY:

UNIVERSITY OFFICE FOR PLANNING AND BUDGETING

OCTOBER 16, 2018

REPORTED BY:  
CHANCELLOR MICHAEL D. AMIRIDIS  
NOVEMBER 15, 2018

# PEER GROUPS

University at Buffalo

University of Alabama at Birmingham

University of Cincinnati

University of Connecticut

University of Kentucky

University of New Mexico

University of South Florida

University of Utah

Virginia Commonwealth University

Note: All peer institutions have a medical school and a hospital or an affiliated hospital and/or a medical center.

# PEER DATA SOURCES

## **NCES IPEDS Surveys**

The US Department of Education's National Center for Education Statistics (NCES) Integrated Postsecondary Education System (IPEDS) consists of a system of interrelated surveys conducted annually. IPEDS gathers information from every higher education institution in the United States covering a variety of topics ranging from enrollments, retention rates, graduation rates, financial aid, finances, faculty and staff, and student costs.

## **NSF Survey of Earned Doctorates (SED)**

The Survey of Earned Doctorates (SED) is a federal survey conducted by the National Opinion Research Center (NORC) for the National Science Foundation (NSF). The SED gathers information annually from U.S. research doctorate graduates about their educational histories, funding sources, and post-doctoral plans.

# ENROLLMENTS

# AREAS OF EXCELLENCE

- Ranked in 251 to 300 range in *The Times Higher Education World University Ranking 2019*, among more than 1,250 international institutions
- Most diverse university among its peers, with 44% of undergraduates from underrepresented groups and 35% of total student body
- Highest among the 115 top research universities (Carnegie classification) on percent of first-year students that were Pell grant recipients (58%) in Fall 2016
- Climbed to 61<sup>st</sup> from 73<sup>rd</sup> ranked public university in *US News and World Reports Best Colleges* rankings
- Ranked among top 15 Most Diverse University in *US News and World Reports 2018*
- Ranked among top 10 by *Wall Street Journal*, *Times Higher Education*, and *Forbes* on Best Value

# AREAS OF EXCELLENCE

- **Fall 2018 first year applications were a record high of 22,404, surpassing 20,000 for the first time, an increase of 5% over fall 2017**
- **Fall 2018 census of 31,683 students was highest 10<sup>th</sup> day enrollment ever:**
  - **Undergraduate enrollment increased by 6.9% (20,783) from last year**
- **Fall 2018 applications from Hispanic students increasing 18% from fall 2017, and applications from African-American students increased 24%**
- **Increased enrollment of new first-year African American students by 14%, from 310 in Fall 2017 to 354 in Fall 2018**
- **International students represent 6.4% of undergraduates in Fall 2018, up from 4.8% in Fall 2017. They were only 2.5% of undergraduates in Fall 2014**

# STRATEGIES FOR SUCCESS

- Completed year 2 of undergraduate/year 1 of graduate-professional implementation of a state-of-the-art Customer (Student) Service Management software suite, Slate
- Implemented counselor portal for high school and community college counselors
- Improved marketing and communication efforts to prospects, applicants and admitted students:
  - Increased emphasis on conversion from admitted student status to enrolled status
  - More than 5,000,000 emails sent to recruits and applicants
  - More than 220,000 recruits managed in Slate management system
  - Completed over 13,500 tele-counseling sessions
  - Hosted 30,000+ visitors at the UIC Visitor Center for daily information sessions, transfer information sessions and campus tours. Continue to bring record number of visitors
  - Held bilingual (Spanish) Saturday Admitted Student Sessions and tours, complimenting LARES sponsored events
  - Altered mix of print and electronic communication to better inform parents and guardians
  - Expanded admissions website microsite translations to 10 different languages



# STRATEGIES FOR SUCCESS

- **Continue UIC Merit Tuition Rate (Chicago Grant) program**
  - **Enrolled 167 new first-year and 51 new transfer recipients in Fall 2018**
  - **Out-of-state student enrollment increased 39% (179 to 248) from 2014 to 2018**
- **Expand “Admission via Excellence” program to automatically admit Illinois residents in the top 4% of graduating high school class**
  - **Program enrolled 27 students who would have otherwise not been admitted, Fall 2018**
- **Launch the Chancellor’s Fellows Program in Fall 2019, through matching funds from the AIM HIGH state-wide initiative, to provide a free college education to high achieving high school students who meet the criteria set forth in the AIM HIGH legislation**



# STRATEGIES FOR SUCCESS

- Continue target 30 Illinois high schools historically known for high number of well-qualified African American Applicants
- Implement previously piloted ACCESS program (augmented admission review)
  - Enrolled 34 students through non-cognitive assessment interviews, Fall 2018
- Continue membership in "I'm First" college search engine and College Greenlight for first generation college students
- Expanded regional recruitment model to include California

# UIC and Peer Institutions Fall Term Enrollment

## Fall 2012 – Fall 2018

Institution	All Student Total								Undergraduate								Graduate and Professional						
	2012	2013	2014	2015	2016	2017	2018		2012	2013	2014	2015	2016	2017	2018		2012	2013	2014	2015	2016	2017	2018
<b>University of Illinois at Chicago</b>	<b>27,875</b>	<b>28,038</b>	<b>27,969</b>	<b>29,048</b>	<b>29,120</b>	<b>30,539</b>	<b>31,683</b>		<b>16,678</b>	<b>16,671</b>	<b>16,718</b>	<b>17,575</b>	<b>17,959</b>	<b>19,448</b>	<b>20,783</b>		<b>11,197</b>	<b>11,367</b>	<b>11,251</b>	<b>11,473</b>	<b>11,161</b>	<b>11,091</b>	<b>10,900</b>
University at Buffalo	28,952	29,850	29,995	29,796	30,184				19,514	19,831	19,882	19,953	20,412				9,438	10,019	10,113	9,843	9,772		
University of Alabama at Birmingham	17,999	18,568	18,698	18,333	19,535				11,291	11,502	11,679	11,511	12,369				6,708	7,066	7,019	6,822	7,166		
University of Cincinnati	33,347	34,379	35,313	36,042	36,596				23,096	23,706	24,300	25,009	25,820				10,251	10,673	11,013	11,033	10,776		
University of Connecticut	25,483	25,911	26,541	27,043	27,721				17,528	18,032	18,395	18,826	19,324				7,955	7,879	8,146	8,217	8,397		
University of Kentucky	28,034	28,435	29,203	29,727	29,781				20,827	21,441	22,223	22,705	22,621				7,207	6,994	6,980	7,022	7,160		
University of New Mexico	29,033	28,592	27,844	27,285	26,999				22,773	22,416	21,792	21,347	21,023				6,260	6,176	6,052	5,938	5,976		
University of South Florida	41,116	41,428	41,938	42,067	42,861				31,125	31,100	31,067	31,111	31,461				9,991	10,328	10,871	10,956	11,400		
University of Utah	32,388	32,077	31,515	31,592	31,860				24,840	24,492	23,907	23,794	23,789				7,548	7,585	7,608	7,798	8,071		
Virginia Commonwealth University	31,445	30,974	30,848	30,918	30,872				23,661	23,356	23,661	23,741	23,865				7,784	7,618	7,187	7,177	7,007		

Data Source: IPEDS Data Center. Includes on- and off-campus enrollments.



# UIC and Peer Institutions First-Time Freshmen Enrollment

## Fall 2012 – Fall 2018

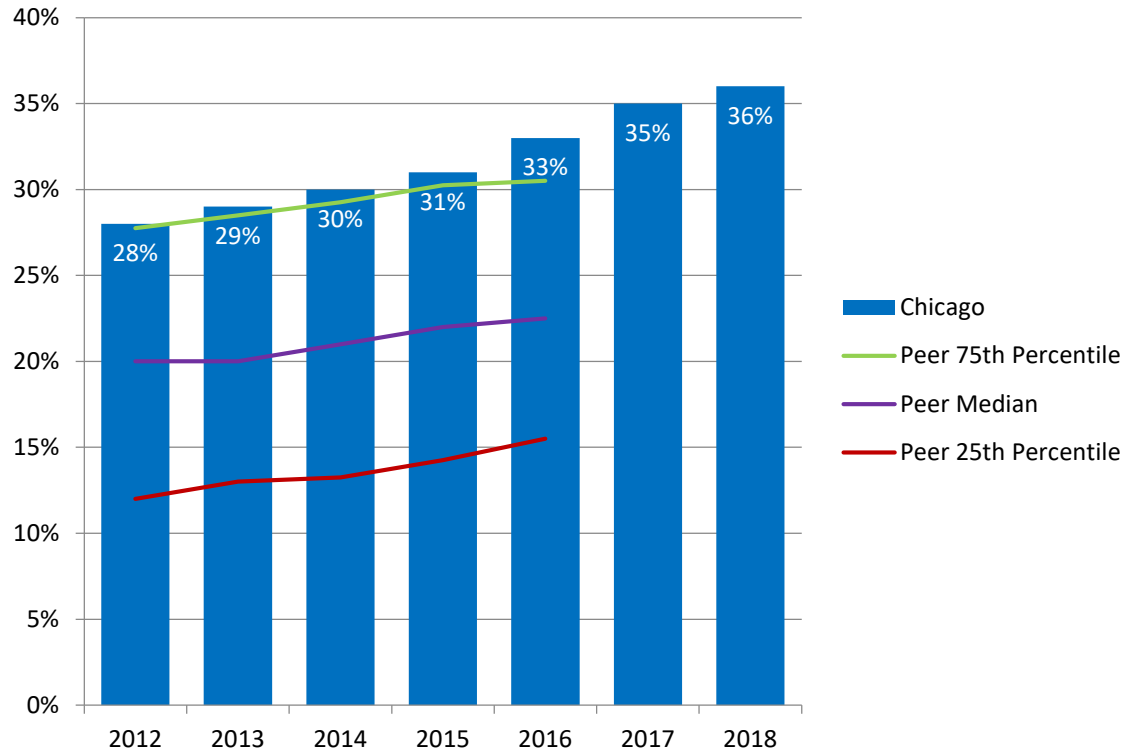
	2012	2013	2014	2015	2016	2017	2018
<b>University of Illinois at Chicago</b>	<b>3,123</b>	<b>3,104</b>	<b>3,030</b>	<b>3,485</b>	<b>3,307</b>	<b>4,051</b>	<b>4,159</b>
University at Buffalo	3,647	3,653	3,517	3,621	4,103		
University of Alabama at Birmingham	1,676	1,773	1,748	1,621	2,021		
University of Cincinnati	4,160	4,486	4,618	4,435	5,011		
University of Connecticut	3,114	3,755	3,588	3,774	3,822		
University of Kentucky	4,647	4,684	5,185	5,211	5,117		
University of New Mexico	3,424	3,517	3,132	3,327	3,402		
University of South Florida	3,750	3,856	4,116	4,133	4,049		
University of Utah	3,494	3,124	3,151	3,410	3,601		
Virginia Commonwealth University	3,554	3,526	3,531	3,997	4,150		

Data Source: IPEDS Data Center. Includes on- and off-campus enrollments.



# PERCENT OF ALL STUDENTS FROM UNDERREPRESENTED\* GROUPS FALL 2012 – FALL 2018

The percent of all students from underrepresented groups at UIC is second highest among its peer group.

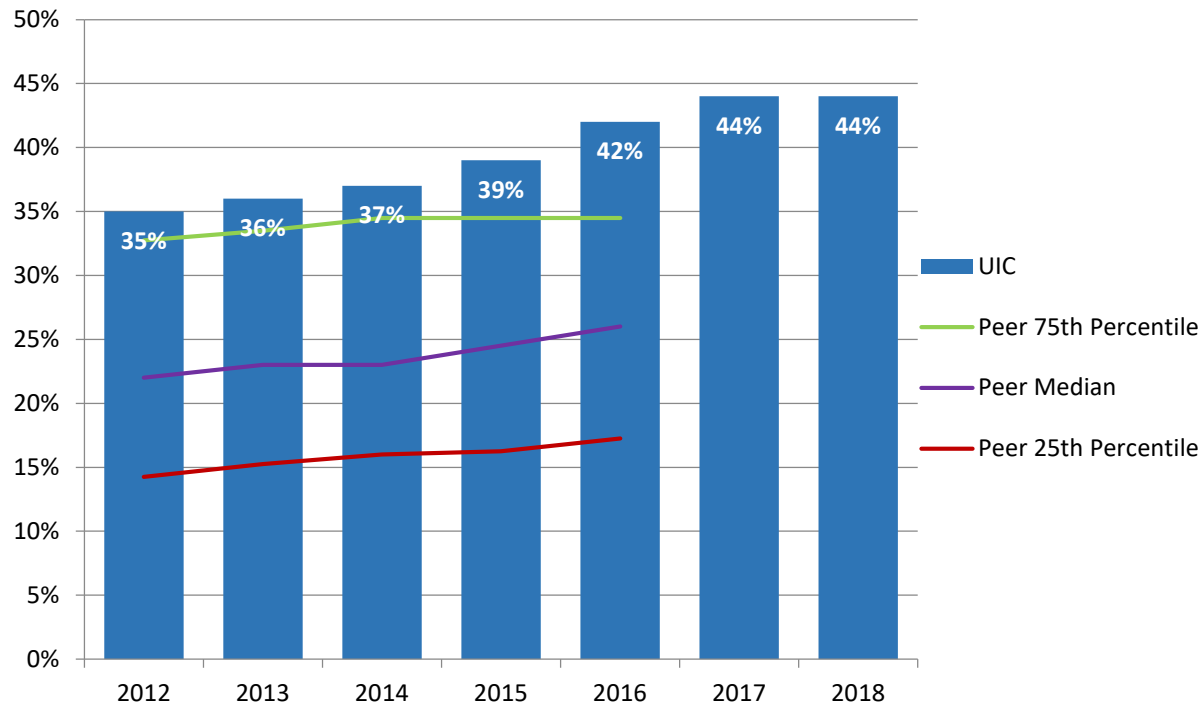


\* Includes Black, Hispanic, American Indian, Native Hawaiian/Other Pacific Islander, and multi-racial students.



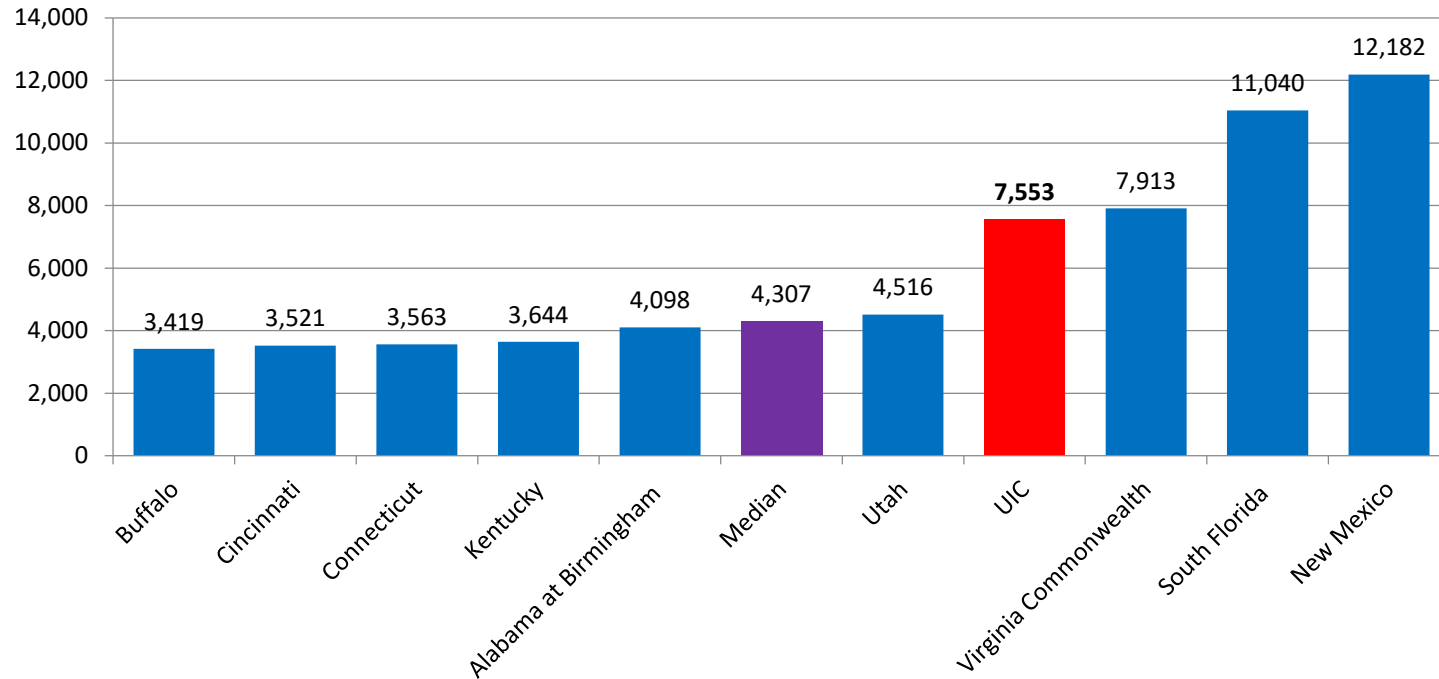
# PERCENT OF UNDERGRADUATE STUDENTS FROM UNDERREPRESENTED\* GROUPS FALL 2012 – FALL 2018

The percent of undergraduate students from underrepresented groups at UIC is highest among its peer group.



\* Includes Black, Hispanic, American Indian, Native Hawaiian/Other Pacific Islander, and multi-racial students.

# NUMBER OF UNDERGRADUATE STUDENTS FROM UNDERREPRESENTED\* GROUPS FALL 2016

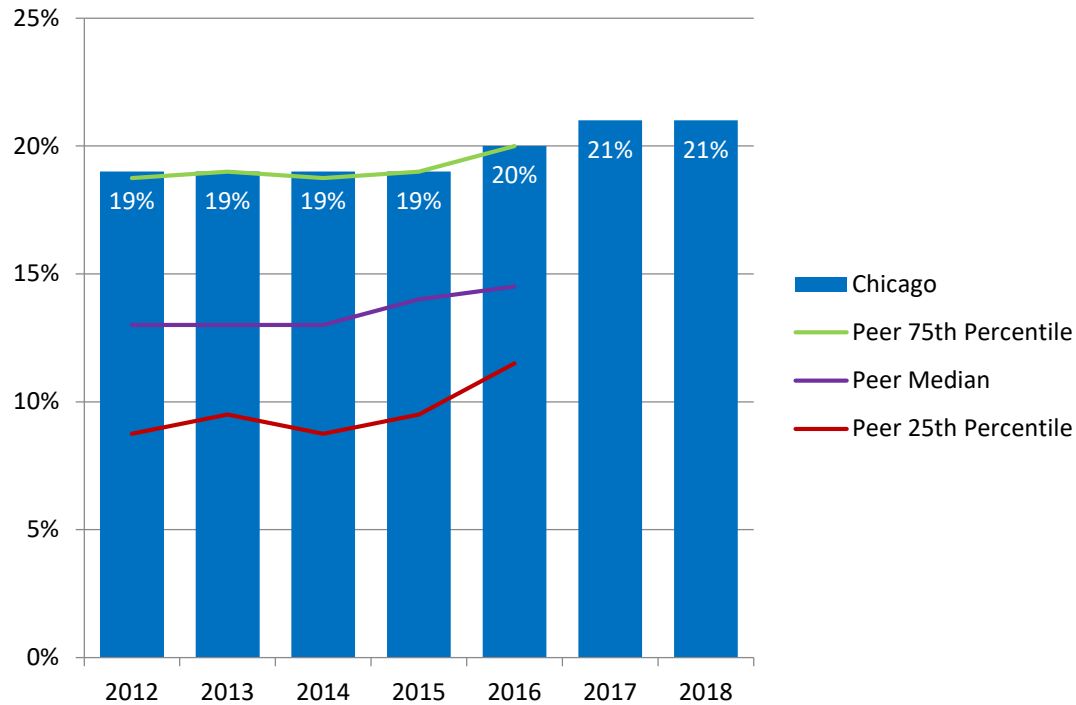


\* Includes Black, Hispanic, American Indian, Native Hawaiian/Other Pacific Islander, and multi-racial students.



# PERCENT ENROLLED GRADUATE AND PROFESSIONAL STUDENTS FROM UNDERREPRESENTED\* GROUPS, FALL 2012 – FALL 2018

The percent of graduate and professional students from underrepresented groups at UIC is second highest among its peer group.



\* Includes Black, Hispanic, American Indian, Native Hawaiian/Other Pacific Islander, and multi-racial students.



# GRADUATION AND RETENTION RATES



# CURRENT TRENDS

- **One-year retention rate is 80% for the Fall 2017 freshmen entering class**
- **Six-year graduation rate is 59% for the Fall 2012 freshmen entering class, which is within the range for the last five entering classes (Fall 2007 through Fall 2011 ranged from 57% to 60%)**
- **Five-year graduation rate for Fall 2013 transfers is 76%, which is within the range for the last five entering classes (Fall 2008 through Fall 2012 ranged from 74% to 78%)**
- **Four-year graduation rate is 37% for the Fall 2014 freshmen entering class, which is the highest that has ever been (from Fall 2011 through Fall 2014 increased from 30% to 37%)**

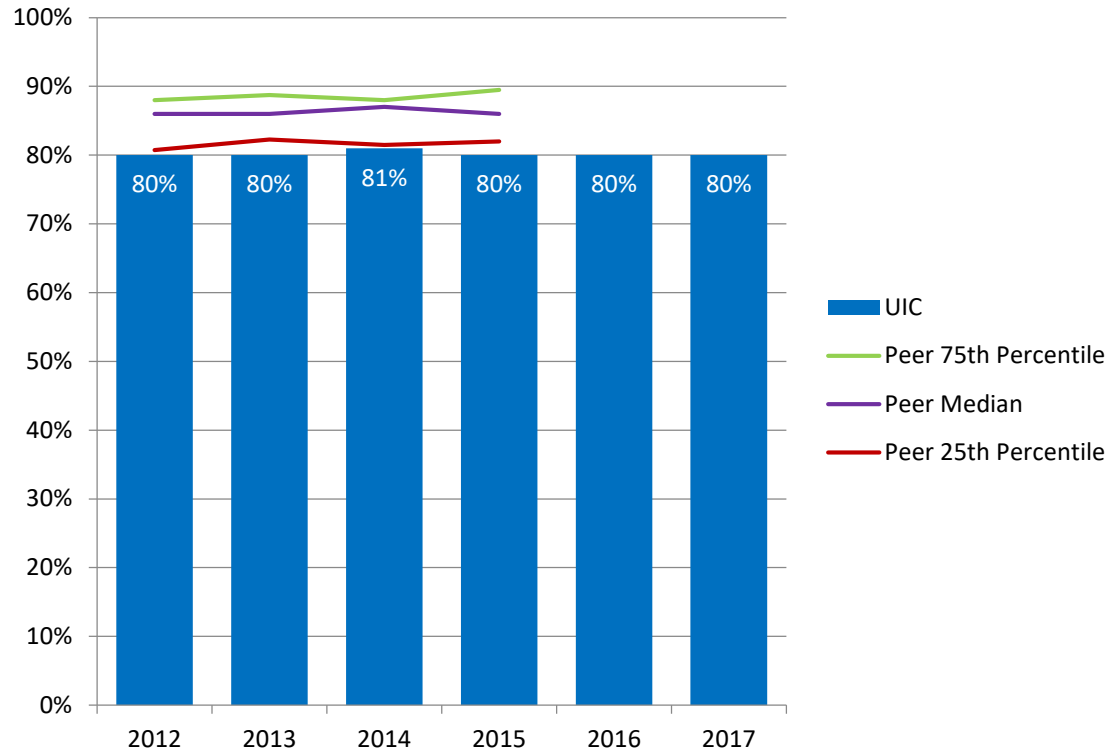
# STRATEGIES FOR STUDENT SUCCESS

- **Completed the first year of the Flames Leadership Network Program**
  - Retention increased by 14 percentage points compared to eligible non-participating students
  - Doubled the size of the FLN cohort for 2018
- **Integrated non-cognitive strength factors in advising for all units**
- **Procured an Integrated Planning and Advising System to integrate advising across campus**
- **Launched a social belonging program to students in first year seminars**
- **Launched a Degree Completion Grant Program in collaboration with APLU**
- **Initiated a summer sophomore success program**
  - Qualified students nearing sophomore status have the opportunity to take two summer session courses but only pay for one
- **Launched an internal grant competition to support innovative approaches to enhancing student success**
- **Recruited the first research cohort of the L@SGANAS program**



# FRESHMAN TO SOPHOMORE ONE-YEAR RETENTION RATES 2012 – 2017 COHORTS

The one-year retention rate at UIC is below the 25<sup>th</sup> percentile of its peer group.

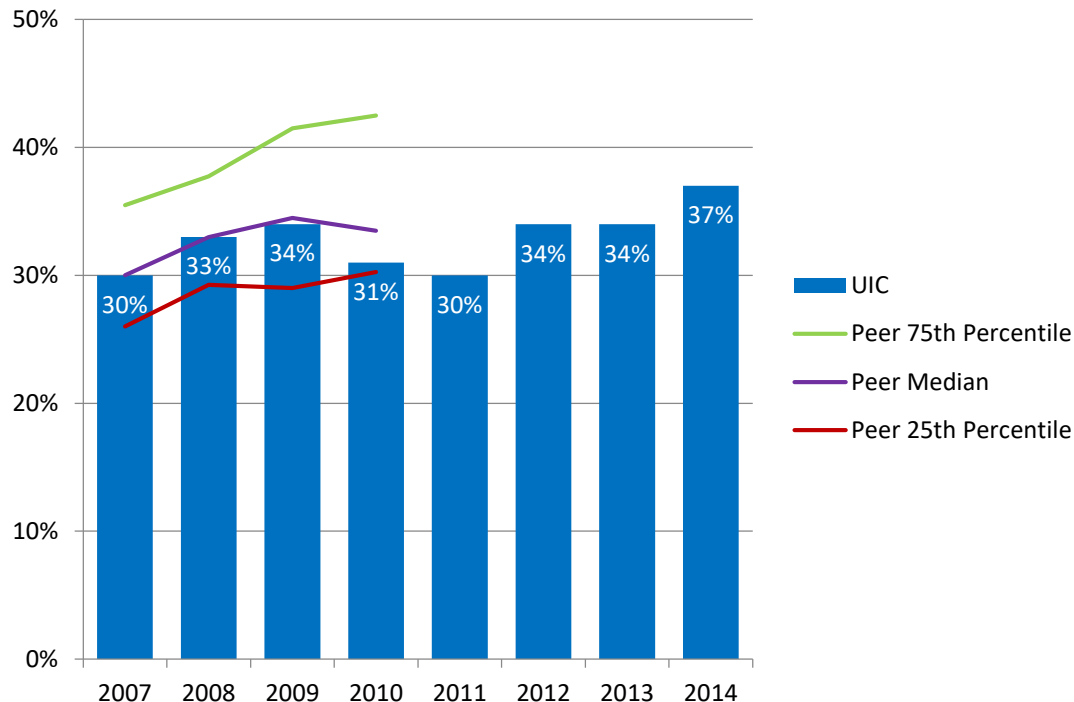


\* Year represent year of entering cohort (e.g., 2016 is fall 2016 entering freshmen returning in fall 2017).



# FIRST-TIME FRESHMEN FOUR-YEAR GRADUATION RATES 2007 – 2014 COHORTS

The four year graduation rate at UIC was near the peer group 25<sup>th</sup> percentile for the 2010 cohort at 31%. It has since risen to 34% for the 2012 and 2013 cohorts and to 37% for the 2014 cohort and is likely near or above the peer group median (peer group data not available yet for those cohorts).

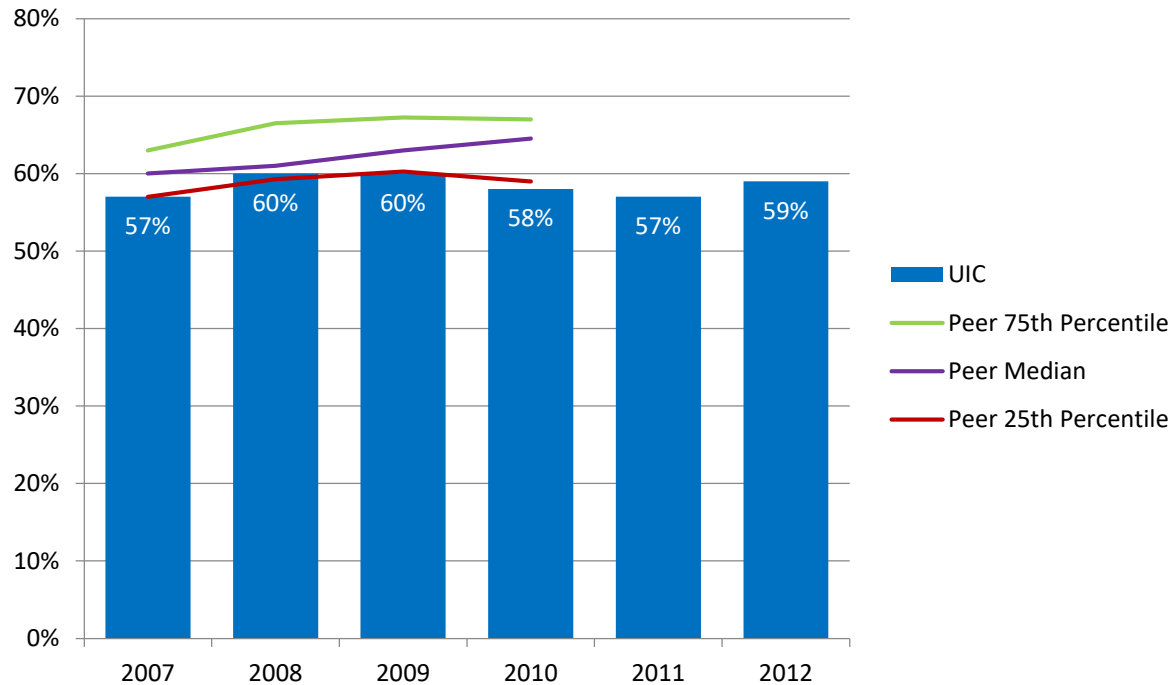


\* Year represent year of entering cohort (e.g., 2011 is fall 2011 entering freshmen graduating by summer 2017).



# FIRST-TIME FRESHMEN SIX-YEAR GRADUATION RATES 2007 – 2012 COHORTS

The six year graduation rate at UIC is below the median and near the 25<sup>th</sup> percentile of its peer group.



\* Year represent year of entering cohort (e.g., 2011 is fall 2011 entering freshmen graduating by summer 2017).



# DEGREES AWARDED



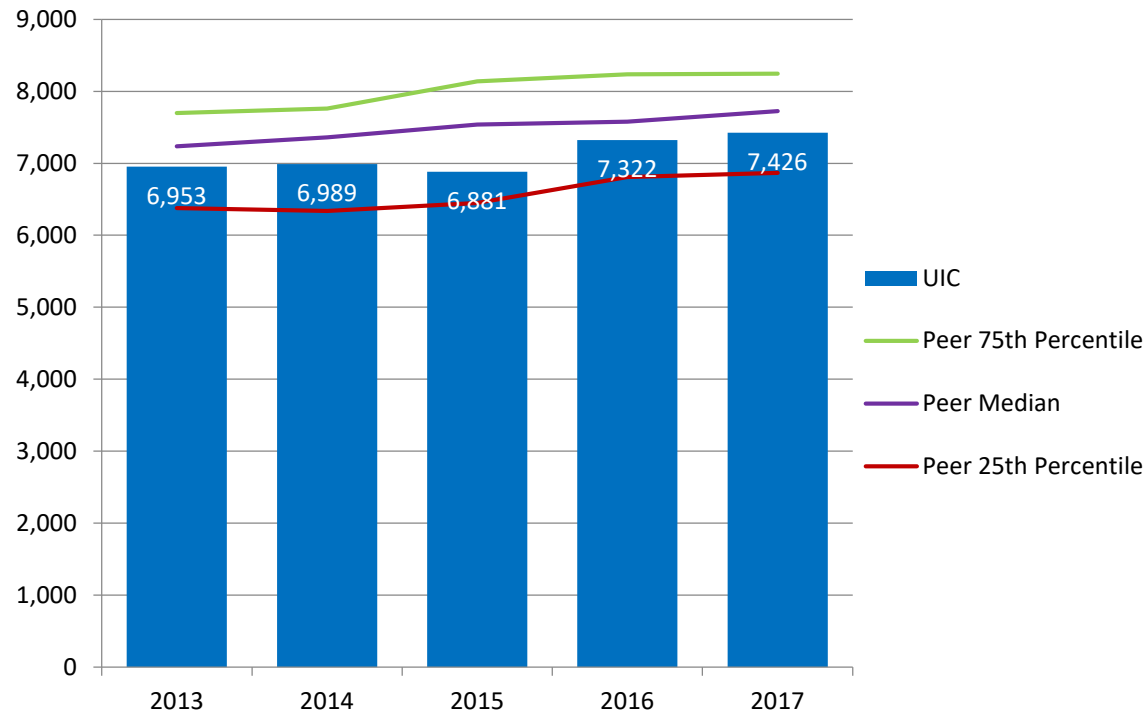
# AREAS OF EXCELLENCE

**UIC awards more degrees in the following areas than peers:**

- **Total graduate and professional degrees**
- **Bachelor's degrees, graduate degrees, and total degrees in STEM fields**
- **Health related degrees**
- **Degrees to underrepresented groups at all levels**

# NUMBER OF TOTAL DEGREES GRANTED FY 2013 – FY 2017

The total number of degrees granted by the UIC is below the median of its peer group.



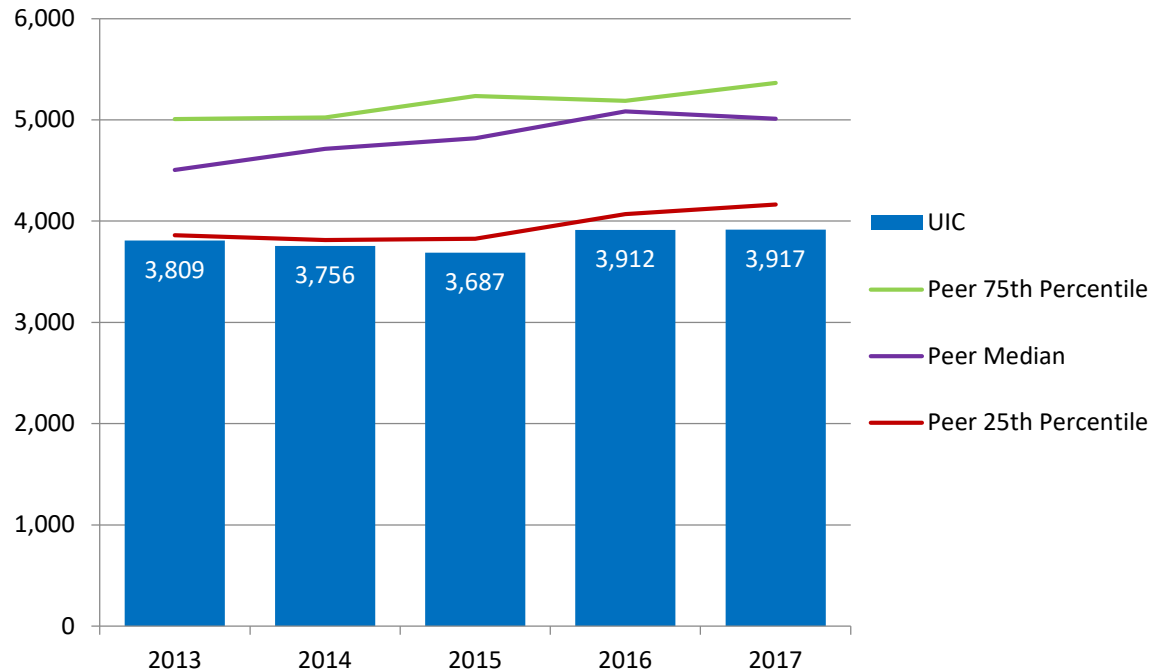
Note: Only includes bachelor, master, doctoral, and professional degrees; excludes associate degrees and certificates. Degrees awarded from July 1 to June 30 of each fiscal year.





# NUMBER OF BACHELOR DEGREES GRANTED FY 2012 – FY 2016

The number of bachelor's degrees granted by UIC is below the 25<sup>th</sup> percentile of its peer median.

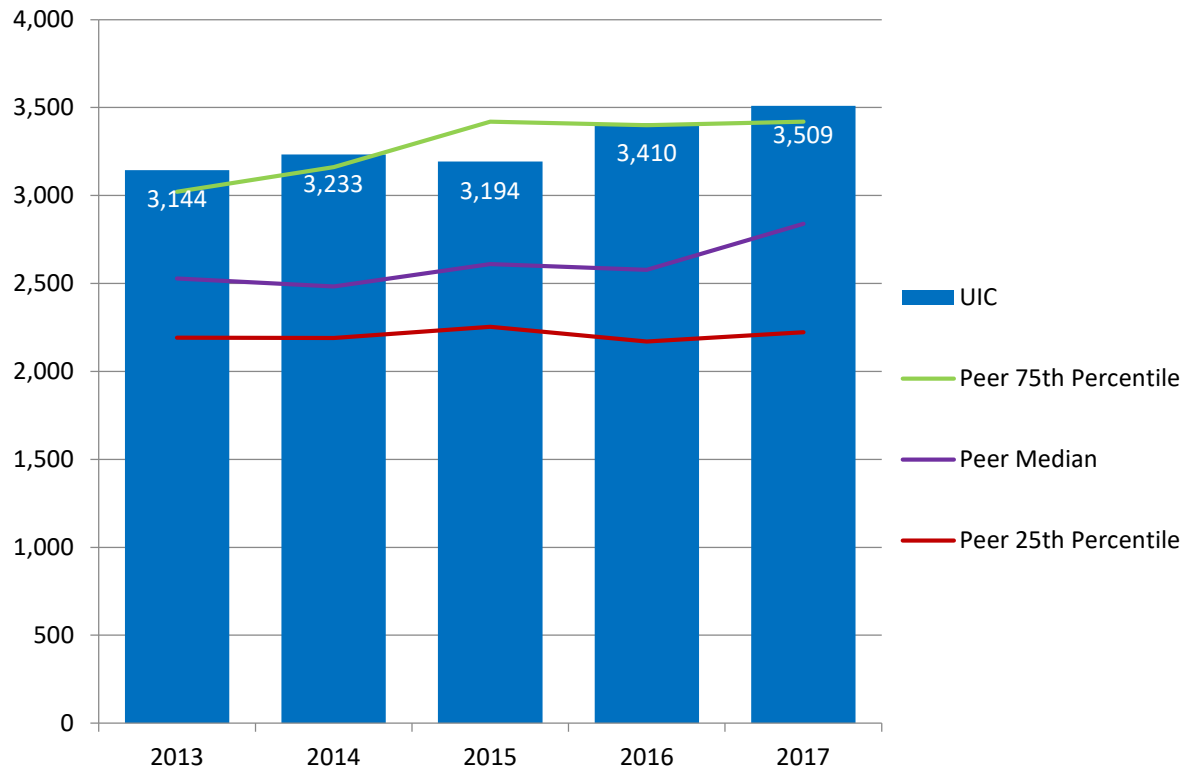


Note: Only includes bachelor degrees, excludes associate degrees and certificates. Degrees awarded from July 1 to June 30 of each fiscal year.



# NUMBER OF GRADUATE AND PROFESSIONAL DEGREES GRANTED FY 2012 – FY 2016

**UIC grants more graduate and professional degrees than its peer median.**

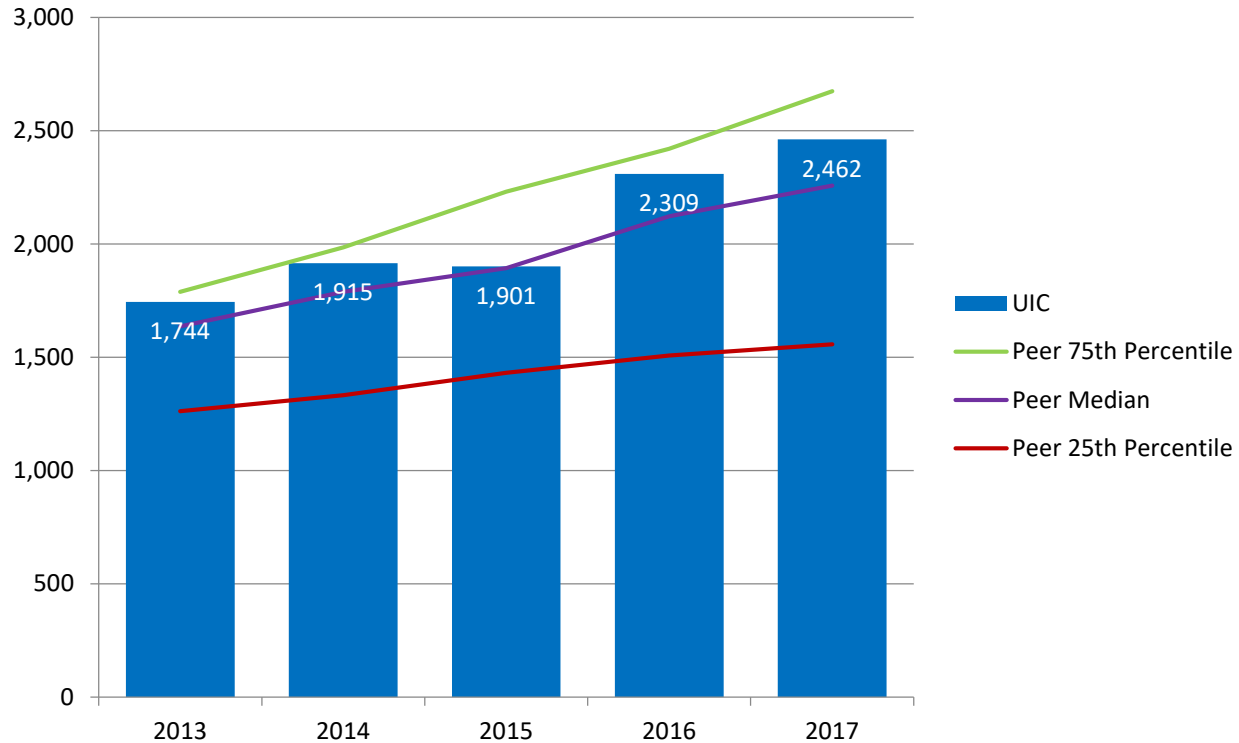


Note: Only includes master, doctoral, and professional degrees; excludes certificates. Degrees awarded from July 1 to June 30 of each fiscal year.



# NUMBER OF TOTAL DEGREES GRANTED IN STEM\* FIELDS FY 2013 – FY 2017

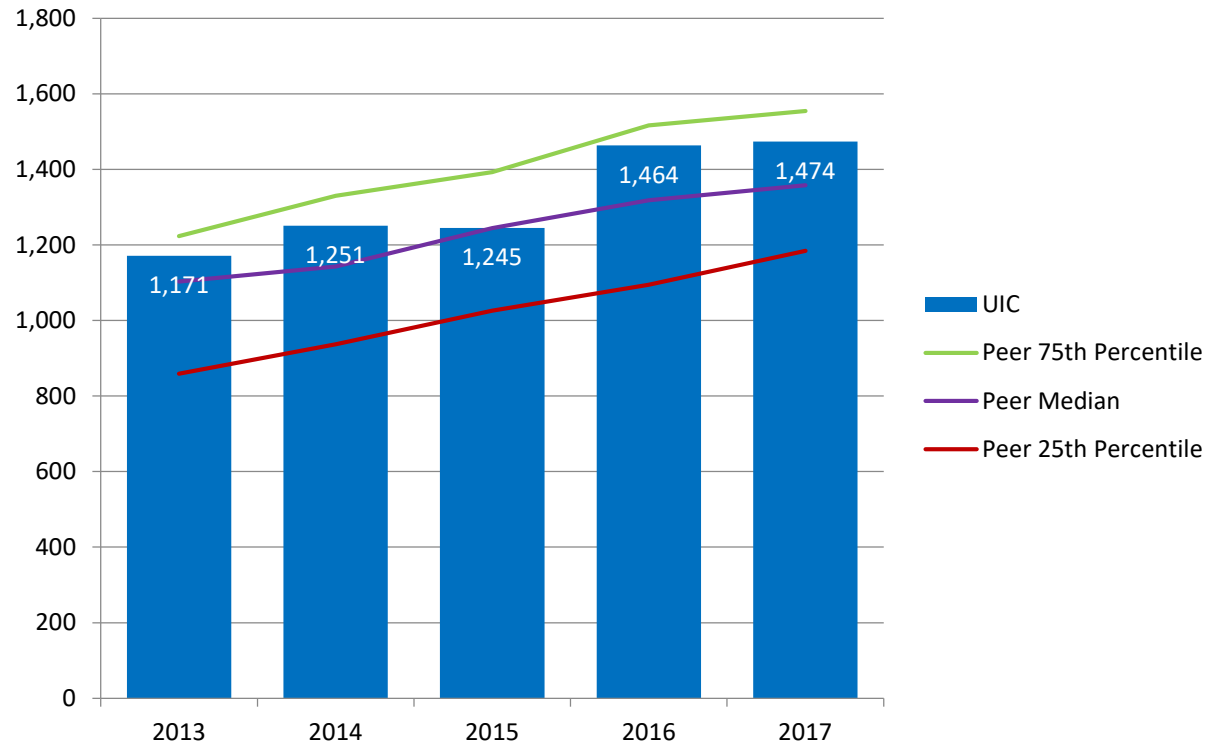
The total number of degrees granted in STEM fields at the UIC is above the peer median.



\* Science, Technology, Engineering, and Mathematics.

# NUMBER OF BACHELOR DEGREES GRANTED IN STEM\* FIELDS FY 2013 – FY 2017

The number of bachelor degrees granted in STEM fields at UIC is above the median of its peer group.

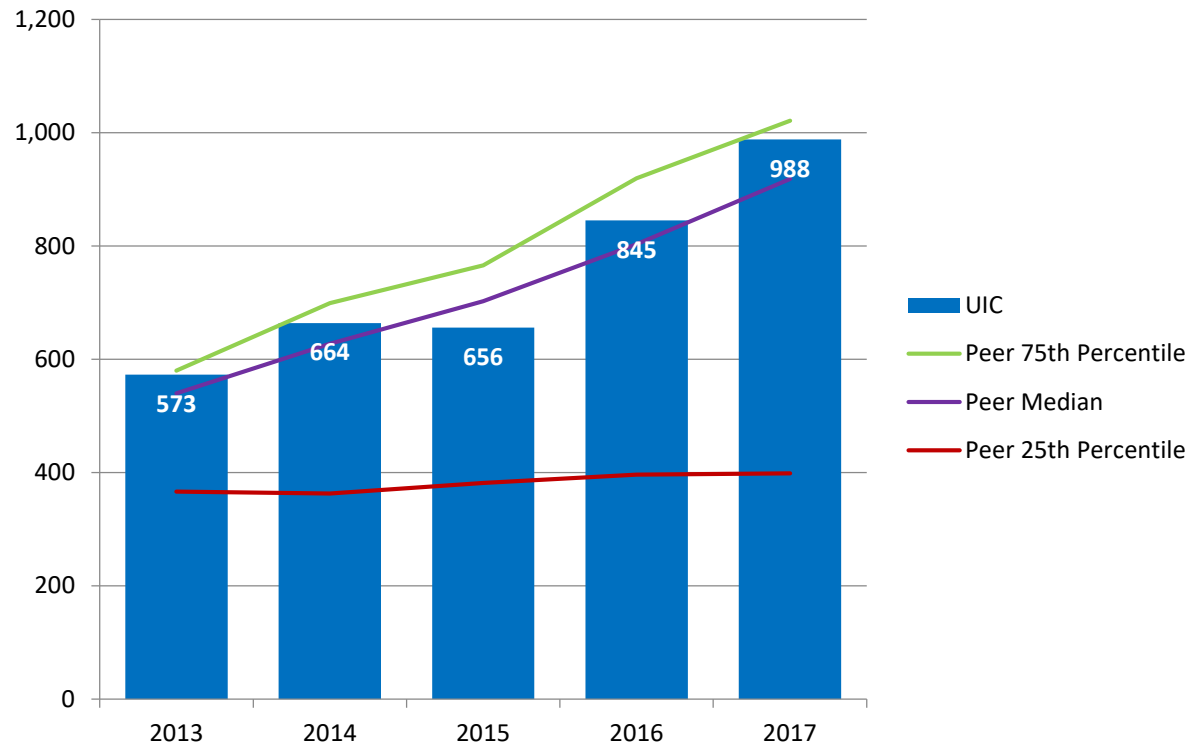


\* Science, Technology, Engineering, and Mathematics.



# NUMBER OF MASTER AND DOCTORAL DEGREES GRANTED IN STEM\* FIELDS FY 2013 – FY 2017

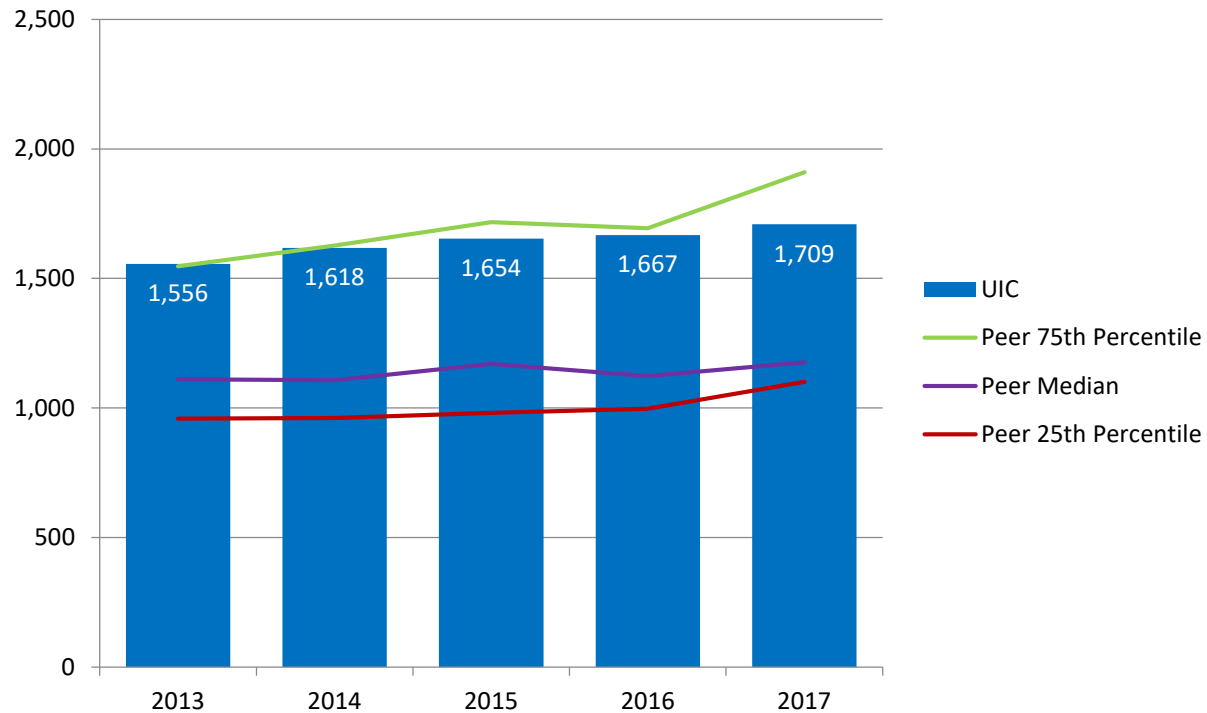
The number of graduate degrees granted in STEM fields at the UIC is above the median of its peer group.



\* Science, Technology, Engineering, and Mathematics.

# NUMBER OF TOTAL HEALTH-RELATED DEGREES GRANTED FY 2013 – FY 2017

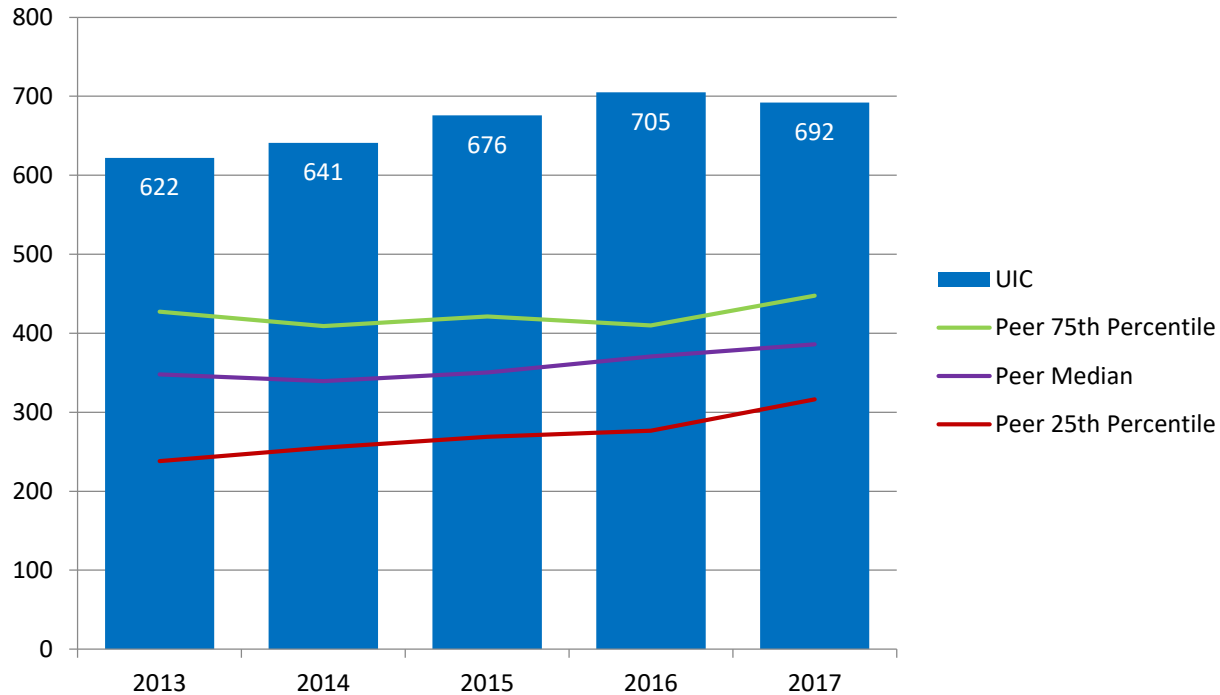
The total number of health-related degrees granted at UIC is near the 75<sup>th</sup> percentile of its peer group.



Note: Includes all degrees reported under the Classification of Instructional Programs (CIP) two digit code 51 (health sciences and related clinical sciences).

# NUMBER OF PROFESSIONAL HEALTH-RELATED DEGREES GRANTED FY 2013 – FY 2017

The number of first-professional health-related degrees granted at UIC is the highest of its peer group.

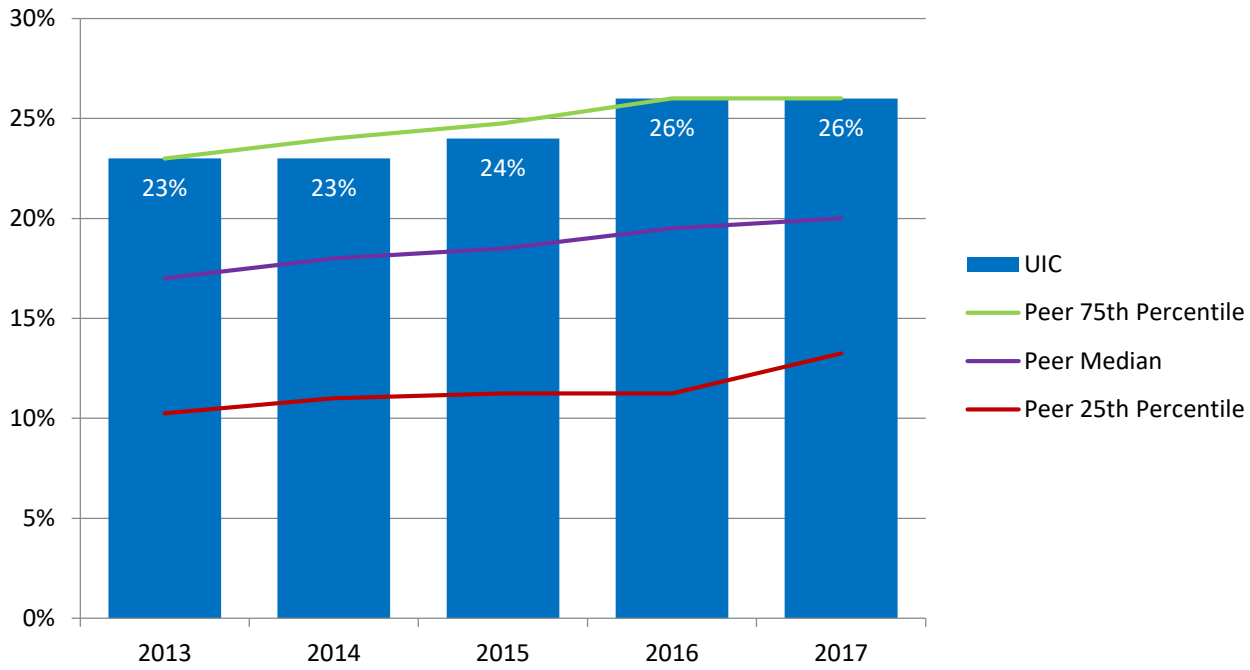


Note: Includes all first-professional degrees reported under the Classification of Instructional Programs (CIP) two digit code 51 (health sciences and related clinical sciences).



# PERCENT TOTAL DEGREES GRANTED TO STUDENTS FROM UNDERREPRESENTED\* GROUPS FY 2013 – FY 2017

The percent of total degrees awarded to students from underrepresented groups at the UIC is near the peer 75<sup>th</sup> percentile.



\* Includes Black, Hispanic, American Indian, Native Hawaiian/Other Pacific Islander, and multi-racial students.

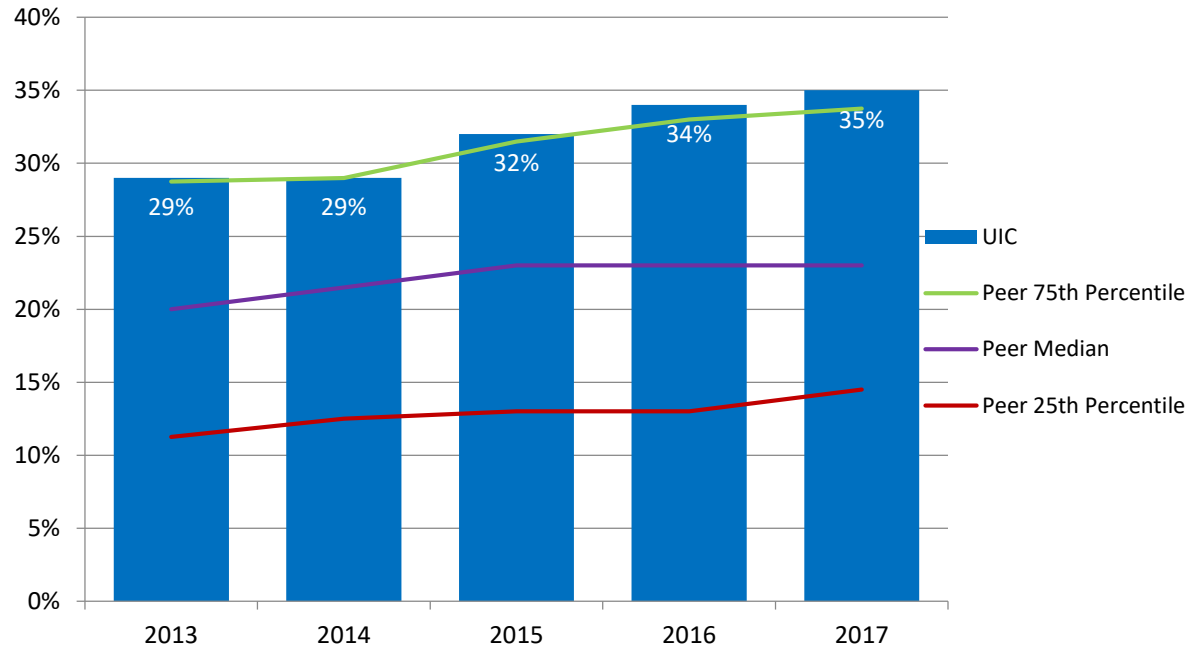
Note: Only includes bachelor, master, doctoral, and professional degrees; excludes associate degrees and certificates. Degrees awarded from July 1 to June 30 of each fiscal year.





# PERCENT BACHELOR DEGREES GRANTED TO STUDENTS FROM UNDERREPRESENTED\* GROUPS, FY 2013 – FY 2017

The percent of bachelor degrees granted at UIC to students from underrepresented groups is 2<sup>nd</sup> highest of its peer group members.



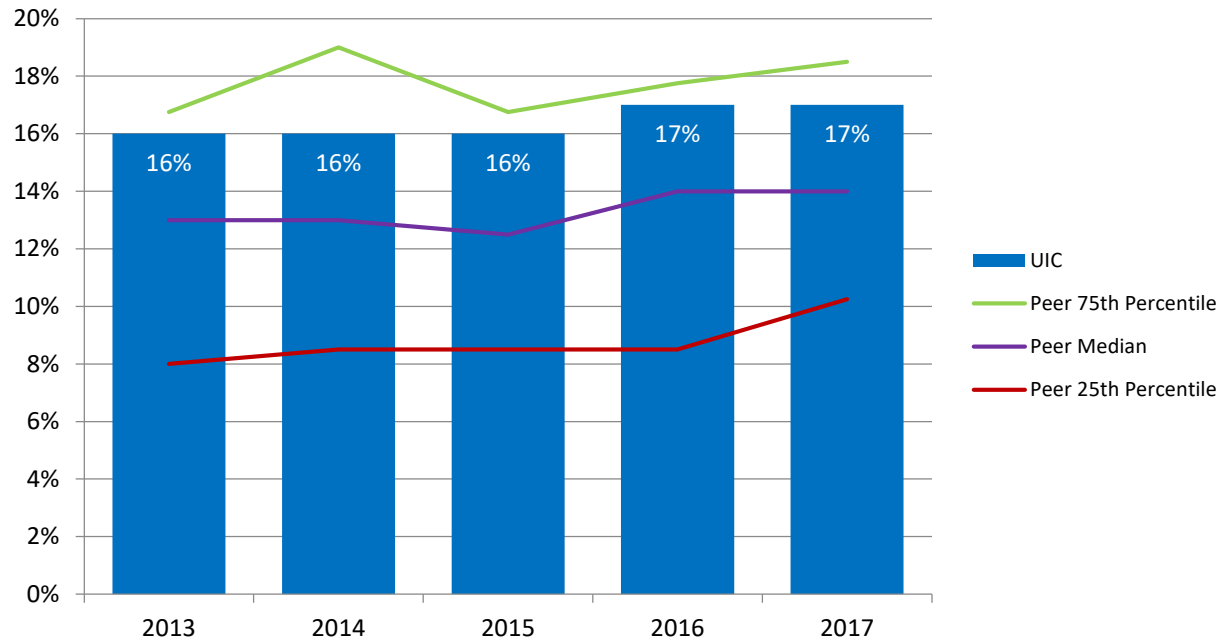
\* Includes Black, Hispanic, American Indian, Native Hawaiian/Other Pacific Islander, and multi-racial students.

Note: Only includes bachelor degrees, excludes associate degrees and certificates. Degrees awarded from July 1 to June 30 of each fiscal year.



# PERCENT GRADUATE AND PROFESSIONAL DEGREES GRANTED TO STUDENTS FROM UNDERREPRESENTED\* GROUPS, FY 2013 – FY 2017

The percent of graduate and professional degrees granted at UIC to students from underrepresented groups is near the 75<sup>th</sup> percentile of its peer group.



\* Includes Black, Hispanic, American Indian, Native Hawaiian/Other Pacific Islander, and multi-racial students.

Note: Only includes master, doctoral, and professional degrees; excludes certificates. Degrees awarded from July 1 to June 30 of each fiscal year.



# GRADUATE EDUCATION



# AREAS OF EXCELLENCE

- Graduate and professional programs with top 50 national rankings:
  - #4 Occupational Therapy
  - #6 Pharmacy
  - #6 Urban Policy
  - #12 Doctor of Nursing Practice
  - #14 Education Administration and Supervision
  - #15 Physical Therapy
  - #17 Public Health
  - #24 Social Work
  - #27 Criminology
  - #35 English Ph.D. Program
  - #41 Clinical Psychology
  - #45 Biomedical Engineering
  - #47 Part-Time MBA Program

# AREAS OF EXCELLENCE

- ***UIC Pipeline to an Inclusive Faculty*** program recruits outstanding underrepresented PhD students and supports them into academic careers
- ***UIC Portal to Biomedical Research Careers*** is a new NIH funded R25 Post-baccalaureate Research Education Program (PREP) that supports the research and professional development of underrepresented scholars seeking to pursue biomedical graduate degrees
- ***UIC Summer Research Opportunities Program (SROP)*** introduces underrepresented undergraduates from UIC and around the country to research and graduate school opportunities at UIC
- Professional development opportunities including academic and life skills workshops and courses in college level teaching, writing and communication skills and the responsible conduct of research are offered to all graduate students
- Fellowship and research funding opportunities focused on interdisciplinary research, external proposal development, degree completion are offered to graduate students in all disciplines

# STRATEGIES FOR SUCCESS

- **Improve graduate student progress to degree:**
  - Mandate that programs track students and provide annual progress reports
  - Work with programs to optimize requirements and shorten time-to-degree
  - Reduce financial stop-outs by increasing fellowship funding through external grants and philanthropic giving
- **Enhance recruitment, retention and graduation of underrepresented graduate students as a first step in diversifying faculty at UIC and around the country:**
  - Identify and recruit promising underrepresented students who are interested in pursuing academic careers
  - Increase targeted fellowships, participation in undergraduate-to-graduate research transition programs and mentoring programs
- **Address student job preparation and placement upon degree completion:**
  - Continue to develop and offer professional development workshops
  - Incentivize workshop participation by connecting attendance to fellowship funding
  - Encourage students to find summer internships through new funding opportunities
  - Improve career services for graduate students

# UIC NUMBER OF DOCTORAL PROGRAMS, FALL 2017

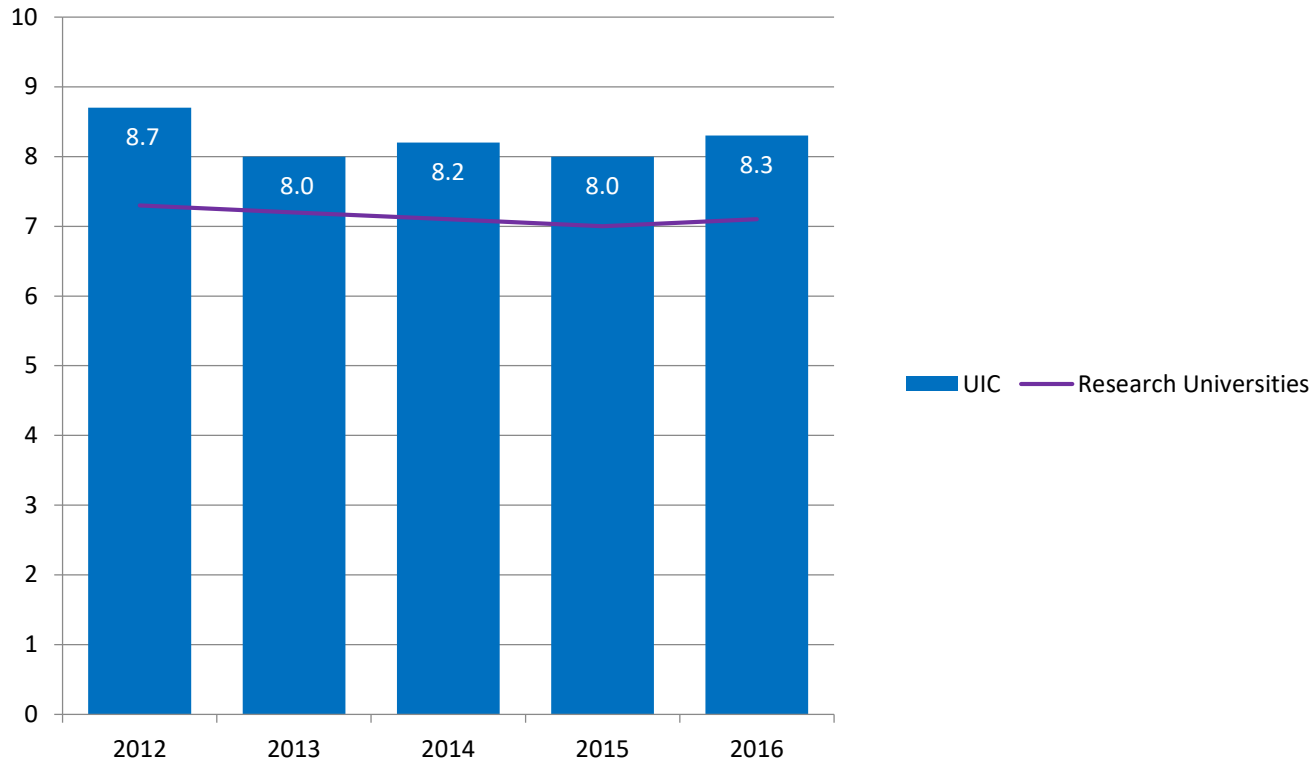
<u>Field of Study</u>	<u>Number</u>
Education	4
Engineering	9
Humanities	8
Life Sciences	19
Other Non-Science and Engineering	4
Physical Sciences	6
Social Sciences	11
	<hr/>
	61

Note: List includes programs with enrollment in Fall 2017, including those programs in phase down. Fields of study at concentration level have been excluded.



# DOCTORAL MEDIAN TIME TO DEGREE SINCE STARTING GRADUATE SCHOOL (NUMBER OF YEARS), AY 2012 – AY 2016

The time to complete a doctoral degree at UIC is higher than the average for research universities.

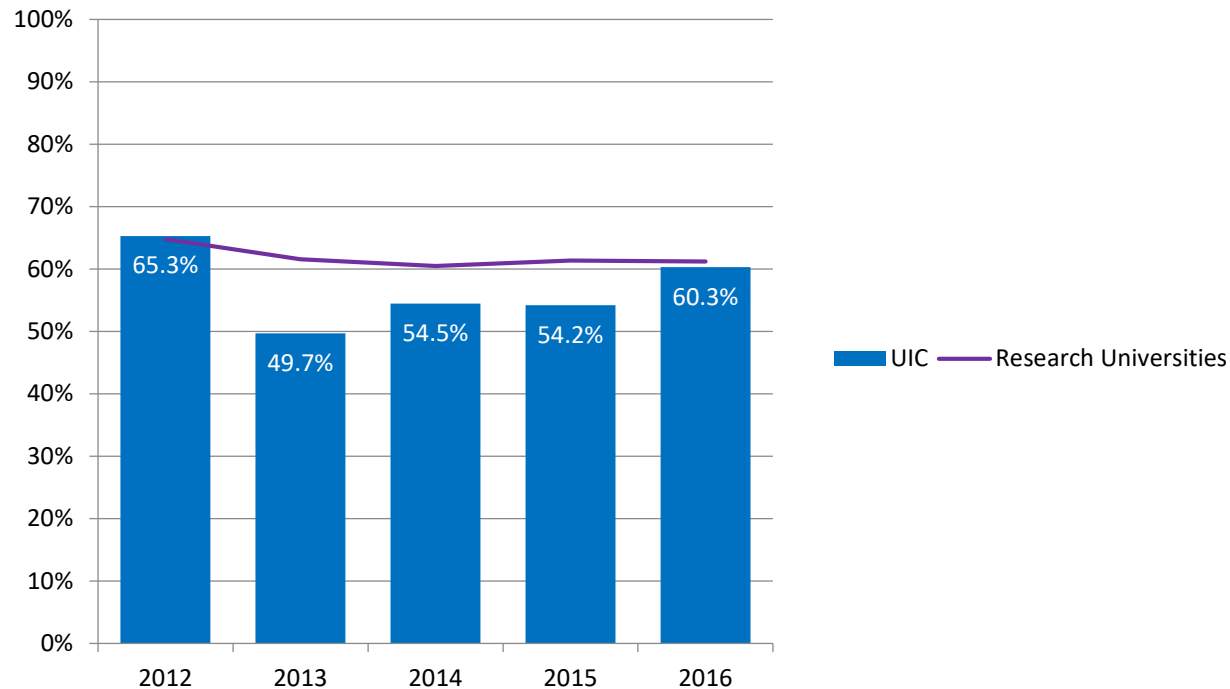


Data Source: Institutional Profile from the Survey of Earned Doctorates.



# PERCENT DOCTORATES WITH EMPLOYMENT OR POSTDOCTORAL RESEARCH TRAINING COMMITMENTS, AY 2012 – AY 2016

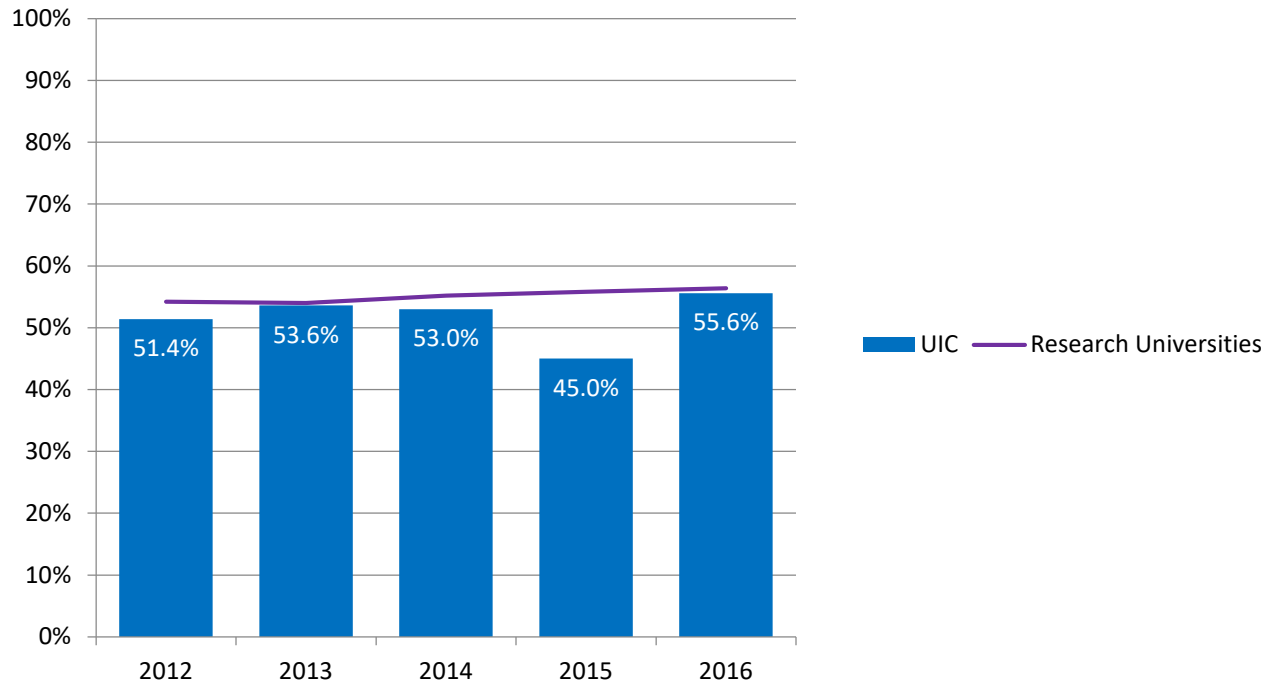
The percent of research doctorate recipients at UIC who have definite commitments for employment or postdoctoral research training is similar to the average for research universities.



Data Source: Institutional Profile from the Survey of Earned Doctorates.

# PERCENT DOCTORATES HAVING NO GRADUATE OR UNDERGRADUATE EDUCATION-RELATED DEBT, AY 2012 – AY 2016

The percent of research doctorate recipients at UIC who had no debt related to undergraduate or graduate education is similar to the average for research universities.



Data Source: Institutional Profile from the Survey of Earned Doctorates.