

Reported to the Board of Trustees
November 15, 2018

University of Illinois at Springfield

Performance Metrics

ENROLLMENTS, GRADUATION AND RETENTION RATES,
DEGREE AWARDED, AND GRADUATE EDUCATION UPDATES BY:
UNIVERSITY OFFICE FOR PLANNING AND BUDGETING
OCTOBER 16, 2018

REPORTED BY:
CHANCELLOR SUSAN J. KOCH
NOVEMBER 15, 2018

Peer Groups



University of Illinois at Springfield

Clarion University of Pennsylvania

Emporia State University

Farmingham State University

Georgia College and State University

Rutgers University - Camden

University of Baltimore

University of Michigan - Flint

University of Nebraska at Kearney

University of Southern Maine

University of Texas at Tyler

Enrollments



University of Illinois at Springfield and Peer Institutions Fall Term Enrollment

Fall 2012 – Fall 2018

Institution	All Student Total							Undergraduate							Graduate and Professional						
	2012	2013	2014	2015	2016	2017		2012	2013	2014	2015	2016	2017		2012	2013	2014	2015	2016	2017	
University of Illinois at Springfield	5,048	5,137	5,431	5,402	5,428	4,956		3,054	3,039	3,038	2,937	2,959	2,932		1,994	2,098	2,393	2,465	2,469	2,024	
Clarion University of Pennsylvania	6,520	6,080	5,712	5,368	5,224			5,518	5,199	4,911	4,555	4,330			1,002	881	801	813	894		
Emporia State University	5,867	6,033	6,114	6,094	5,887			3,773	3,873	3,924	3,864	3,702			2,094	2,160	2,190	2,230	2,185		
Framingham State University	6,506	6,429	6,499	6,398	5,977			4,489	4,584	4,609	4,478	4,337			2,017	1,845	1,890	1,920	1,640		
Georgia College & State University	6,444	6,551	6,772	6,889	6,915			5,568	5,729	5,927	6,036	6,047			876	822	845	853	868		
Rutgers University - Camden	6,343	6,264	6,321	6,408	6,475			4,708	4,842	4,857	4,894	5,003			1,635	1,422	1,464	1,514	1,472		
University of Baltimore	6,558	6,518	6,422	6,229	5,983			3,426	3,526	3,485	3,344	3,222			3,132	2,992	2,937	2,885	2,761		
University of Michigan - Flint	8,289	8,555	8,574	8,470	8,044			6,984	7,143	7,078	6,868	6,585			1,305	1,412	1,496	1,602	1,459		
University of Nebraska at Kearney	7,199	7,052	6,902	6,747	6,788			5,648	5,502	5,274	5,108	5,056			1,551	1,550	1,628	1,639	1,732		
University of Southern Maine	9,382	8,923	8,428	7,739	7,855			7,407	7,098	6,628	6,126	6,189			1,975	1,825	1,800	1,613	1,666		
University of Texas at Tyler	6,858	7,476	8,036	8,785	9,835			5,239	5,591	5,849	6,318	7,032			1,619	1,885	2,187	2,467	2,803		

Springfield Fall 2018 Total Enrollments

All Student Total: 4,575

Undergraduate: 2,814

Graduate: 1,761

Data Source: IPEDS Data Center. Includes on- and off-campus enrollments.

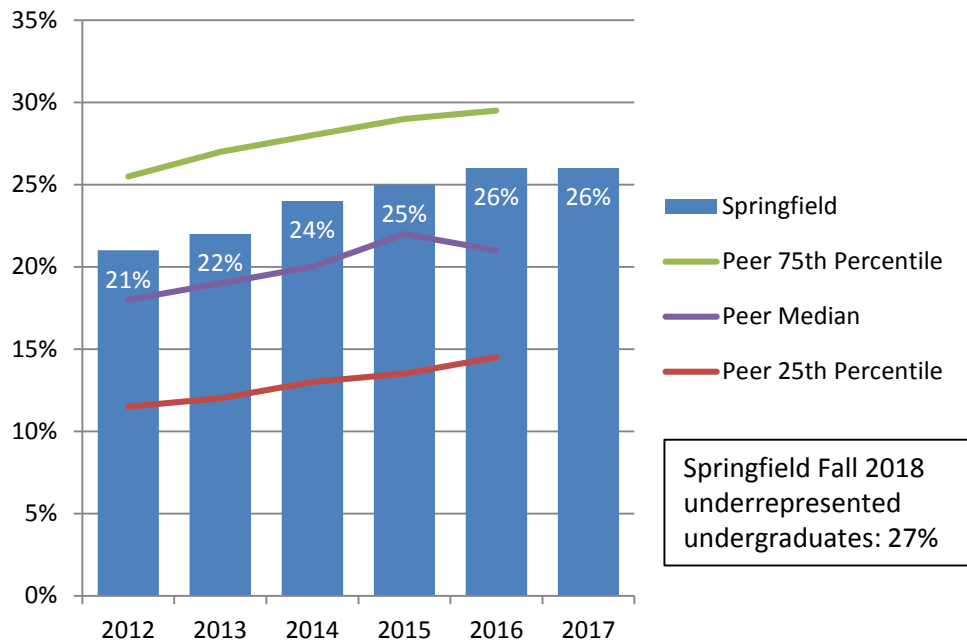
University of Illinois at Springfield and Peer Institutions First-Time Freshmen Enrollment Fall 2012 – Fall 2018

	<u>2012</u>	<u>2013</u>	<u>2014</u>	<u>2015</u>	<u>2016</u>	<u>2017</u>
University of Illinois at Springfield	270	316	305	268	300	278
Clarion University of Pennsylvania	1,132	996	984	942	941	
Emporia State University	623	696	755	735	665	
Framingham State University	826	809	808	855	749	
Georgia College & State University	1,311	1,395	1,465	1,475	1,381	
Rutgers University - Camden	485	496	431	424	657	
University of Baltimore	222	241	234	141	176	
University of Michigan - Flint	626	724	662	642	640	
University of Nebraska at Kearney	1,136	1,022	990	938	1,008	
University of Southern Maine	865	780	737	705	805	
University of Texas at Tyler	632	707	692	780	825	

Springfield Fall 2018 first-time freshmen: 316

Data Source: IPEDS Data Center. Includes on- and off-campus enrollments.

Percent of Undergraduate Students from Underrepresented* Groups Fall 2012 – Fall 2018

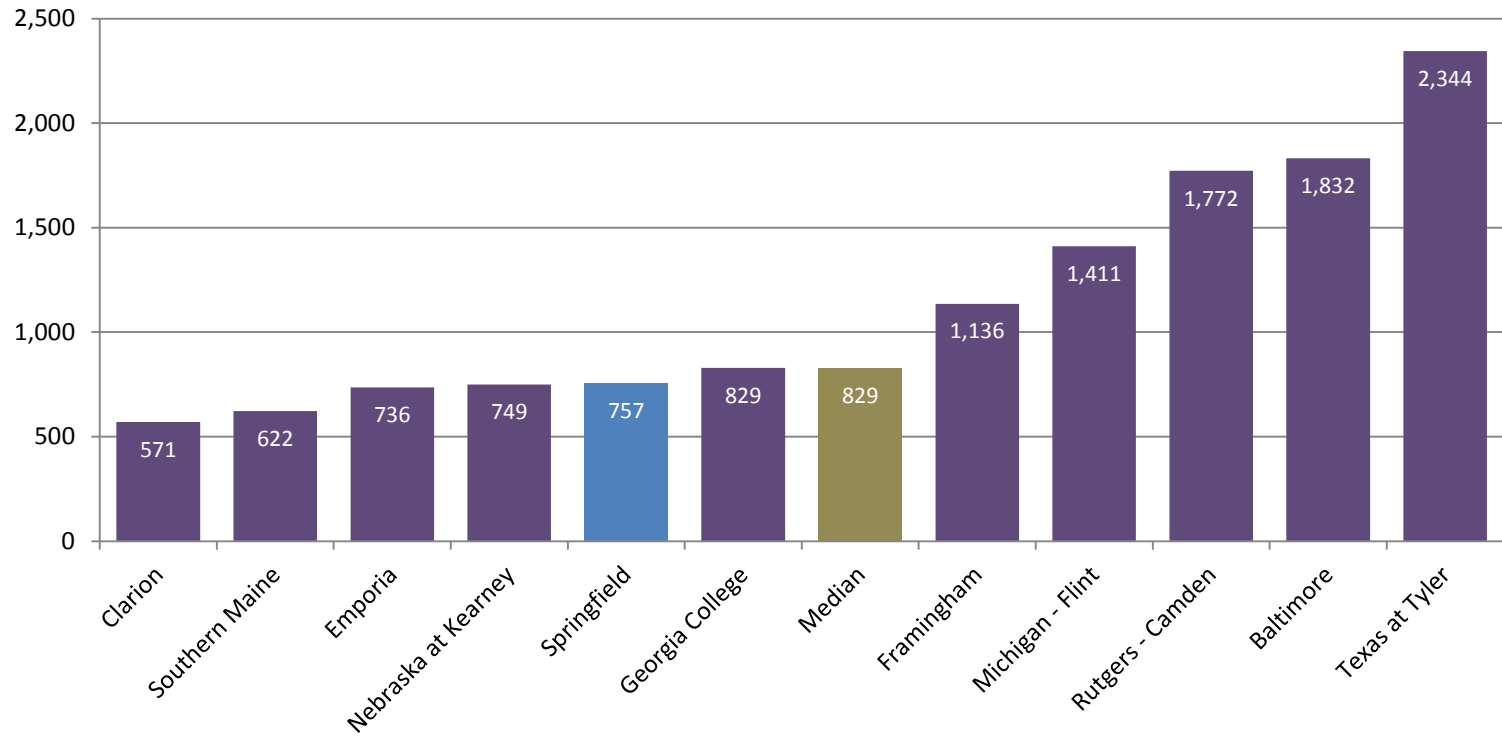


The percent of undergraduate students from underrepresented groups at the University of Illinois at Springfield is higher than the peer median.

Springfield Fall 2018 underrepresented undergraduates: 27%

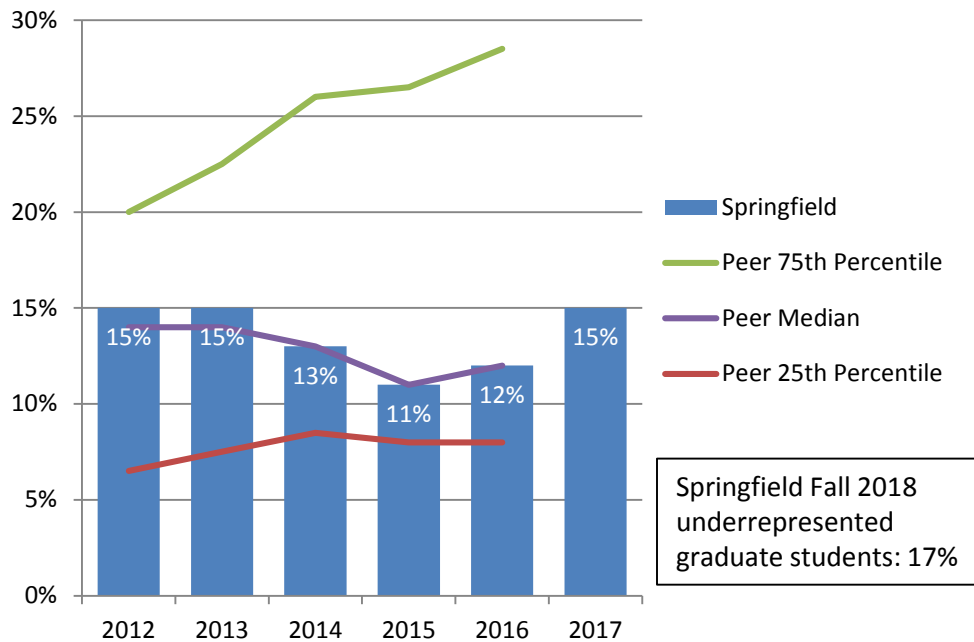
* Includes Black, Hispanic, American Indian, Native Hawaiian/Other Pacific Islander, and multi-racial students.

Number of Undergraduate Students from Underrepresented* Groups Fall 2016



* Includes Black, Hispanic, American Indian, Native Hawaiian/Other Pacific Islander, and multi-racial students.

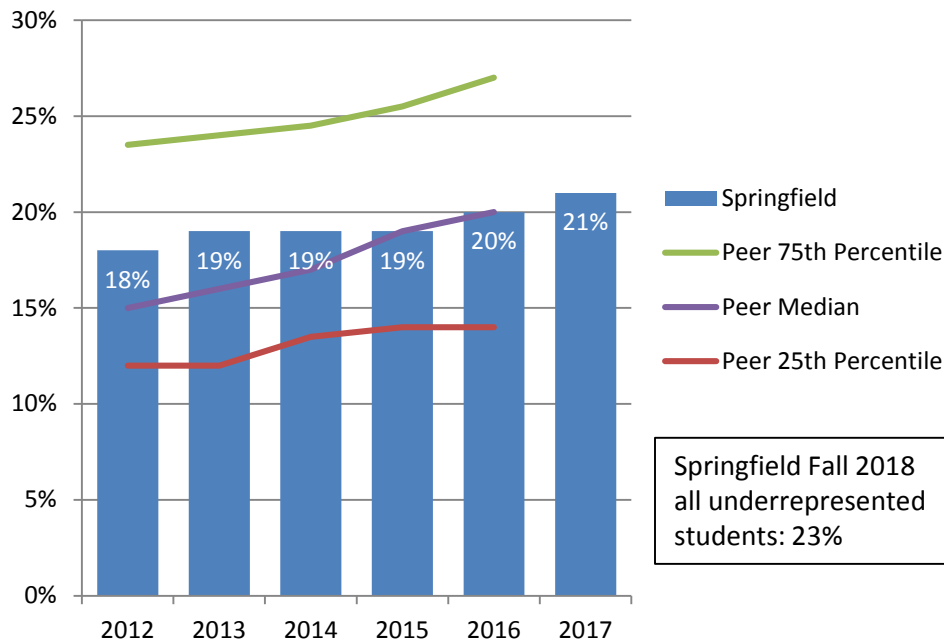
Percent of Graduate and Professional Students from Underrepresented* Groups Fall 2012 – Fall 2018



The percent of graduate students from underrepresented groups at the University of Illinois at Springfield is on par with the peer median.

* Includes Black, Hispanic, American Indian, Native Hawaiian/Other Pacific Islander, and multi-racial students.

Percent of All Students from Underrepresented* Groups Fall 2012 – Fall 2018



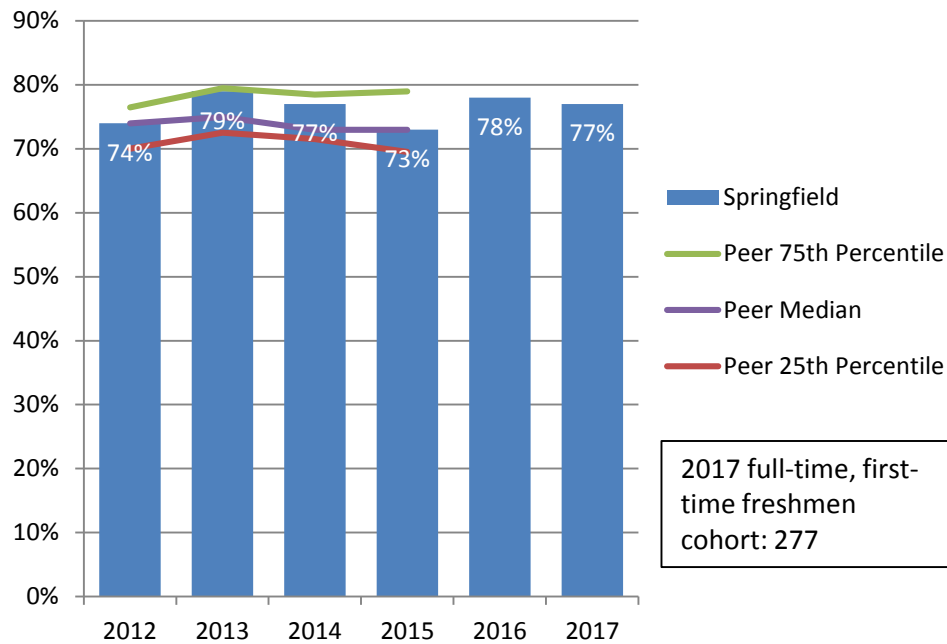
Since Fall 2015, the percent of total students from underrepresented groups at the University of Illinois at Springfield is on par with the peer median.

* Includes Black, Hispanic, American Indian, Native Hawaiian/Other Pacific Islander, and multi-racial students.

Graduation and Retention Rates

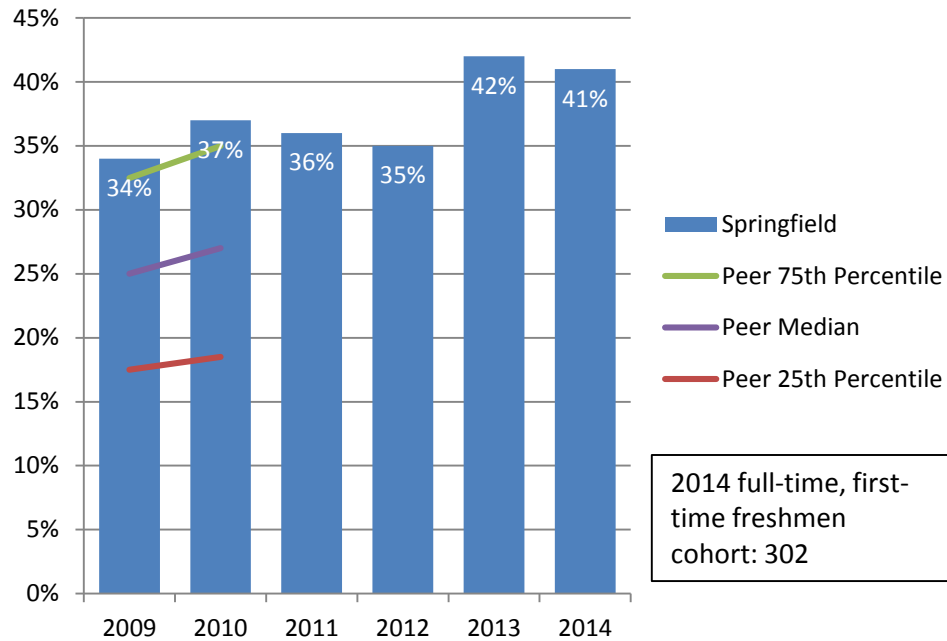


Freshman to Sophomore One-Year Retention Rates 2012 – 2017 Cohorts



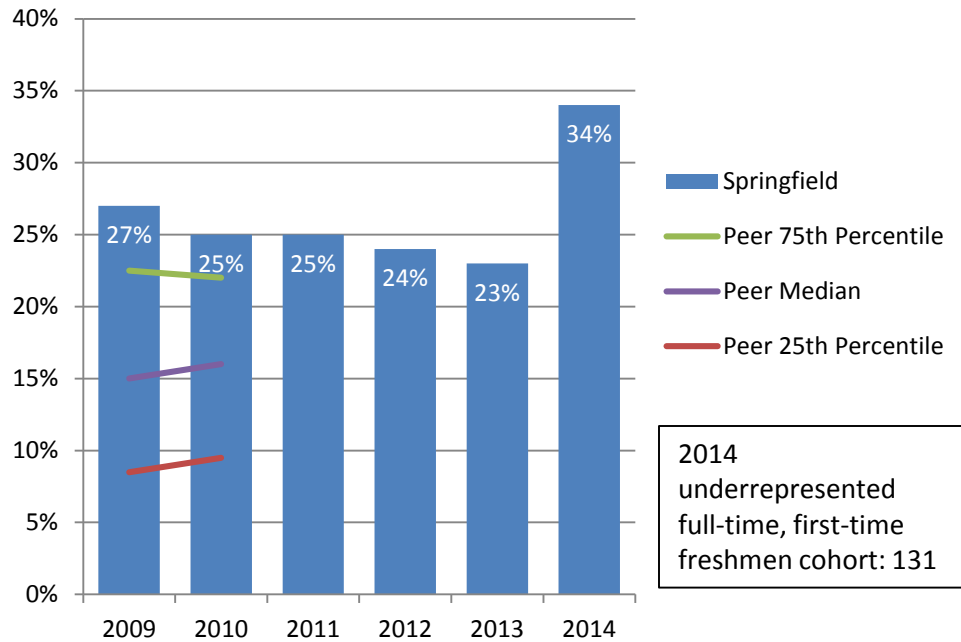
The freshmen retention rate at University of Illinois at Springfield is on par with the peer median.

First-Time Freshmen Four-Year Graduation Rates 2009 – 2014 Cohorts



University of Illinois at Springfield graduates a higher percent of undergraduate students within four years compared to its peer median.

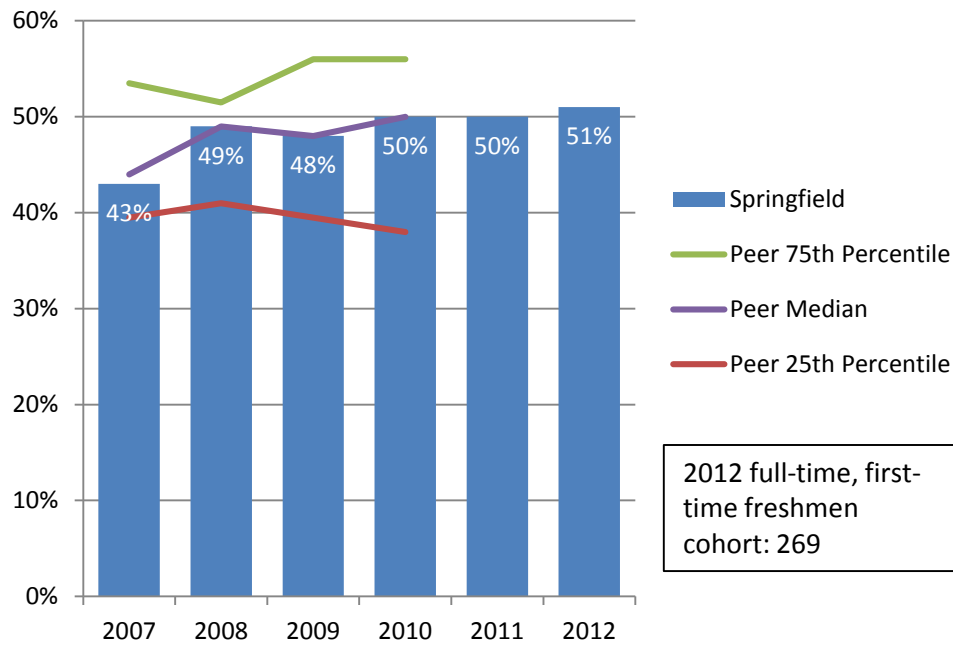
Percent First-Time Freshmen from Underrepresented* Groups Four-Year Graduation Rates 2009 – 2014 Cohorts



Compared to the peer median, the University of Illinois at Springfield graduates a higher percent of students from underrepresented groups within four years.

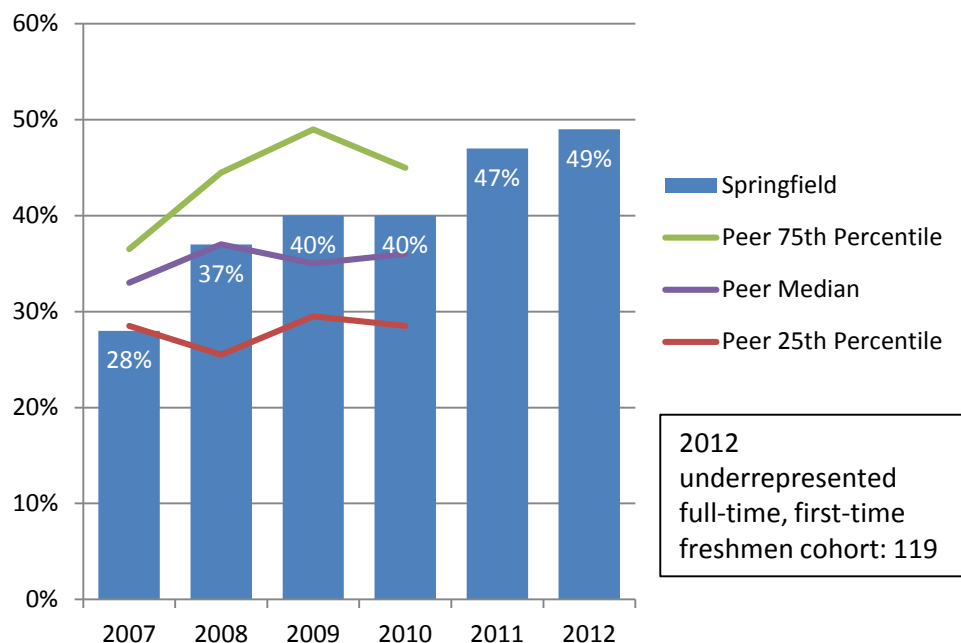
* Includes Black, Hispanic, American Indian, Native Hawaiian/Other Pacific Islander, and multi-racial students.

First-Time Freshmen Six-Year Graduation Rates 2007 – 2012 Cohorts



The six year graduation rate for undergraduates at the University of Illinois at Springfield is on par with its peer median.

Percent First-Time Freshmen from Underrepresented* Groups Six-Year Graduation Rates 2007 – 2012 Cohorts



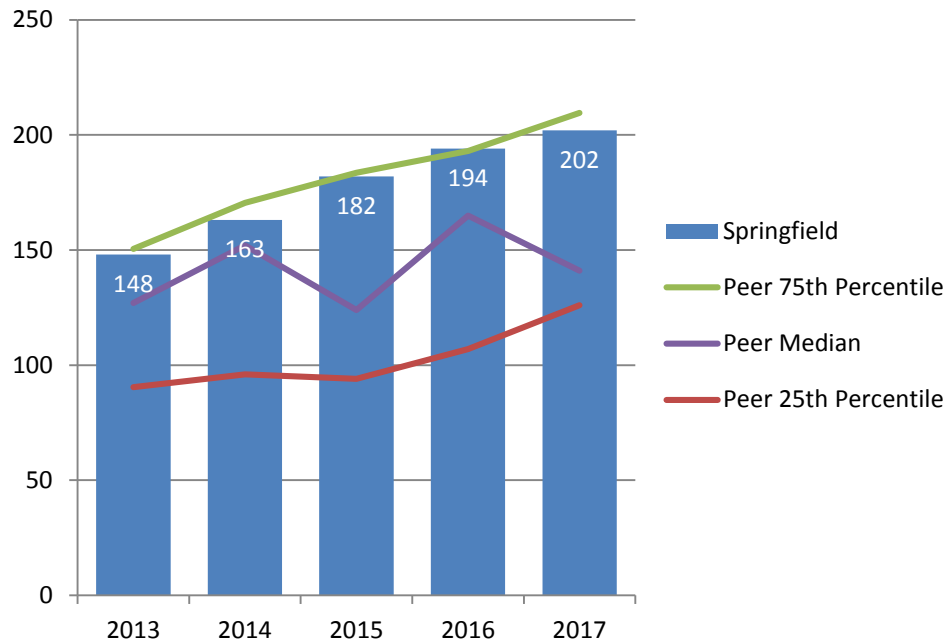
Beginning with the Fall 2009 cohort, the University of Illinois at Springfield graduates a higher percent of students from underrepresented groups within six years than its peer median.

* Includes Black, Hispanic, American Indian, Native Hawaiian/Other Pacific Islander, and multi-racial students.

Degrees Awarded



Number of Bachelor Degrees Granted in STEM* Fields FY 2013 – FY 2017

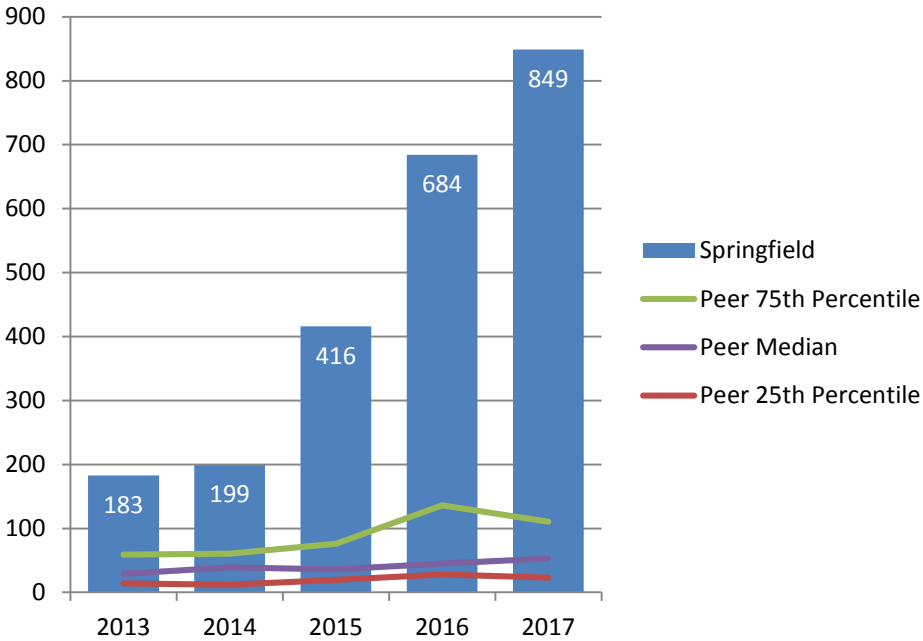


University of Illinois at Springfield granted more undergraduate degrees in STEM fields than its peer median.

* Science, Technology, Engineering, and Mathematics.

Note: Only includes bachelor degrees, excludes associate degrees and certificates. Degrees awarded from July 1 to June 30 of each fiscal year.

Number of Master and Doctoral Degrees Granted in STEM* Fields FY 2013 – FY 2017

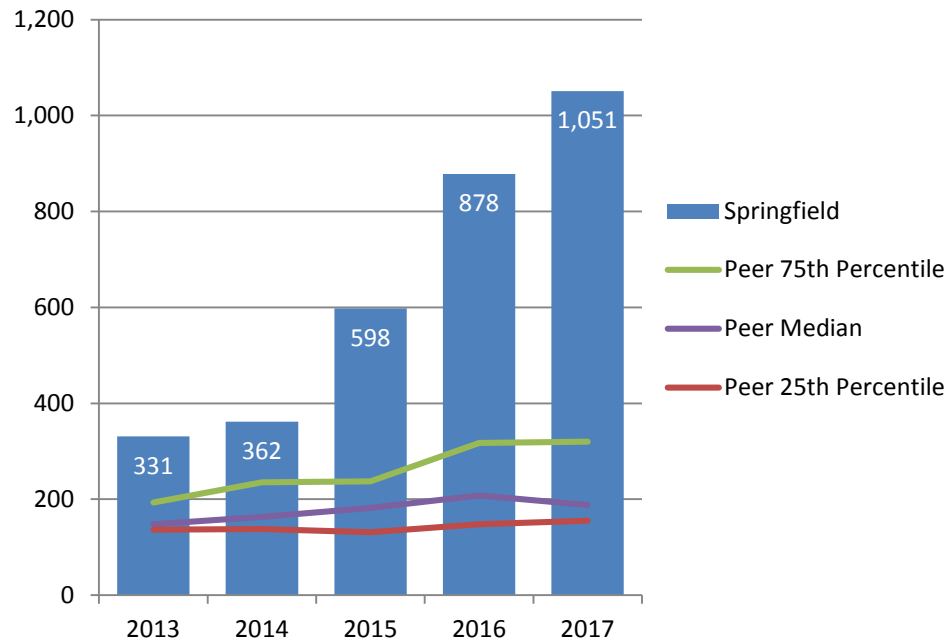


University of Illinois at Springfield grants more graduate degrees in STEM fields than its peer median.

* Science, Technology, Engineering, and Mathematics.

Note: Only includes master and doctoral degrees, excludes certificates. Degrees awarded from July 1 to June 30 of each fiscal year.

Number of Total Degrees Granted in STEM* Fields FY 2013 – FY 2017

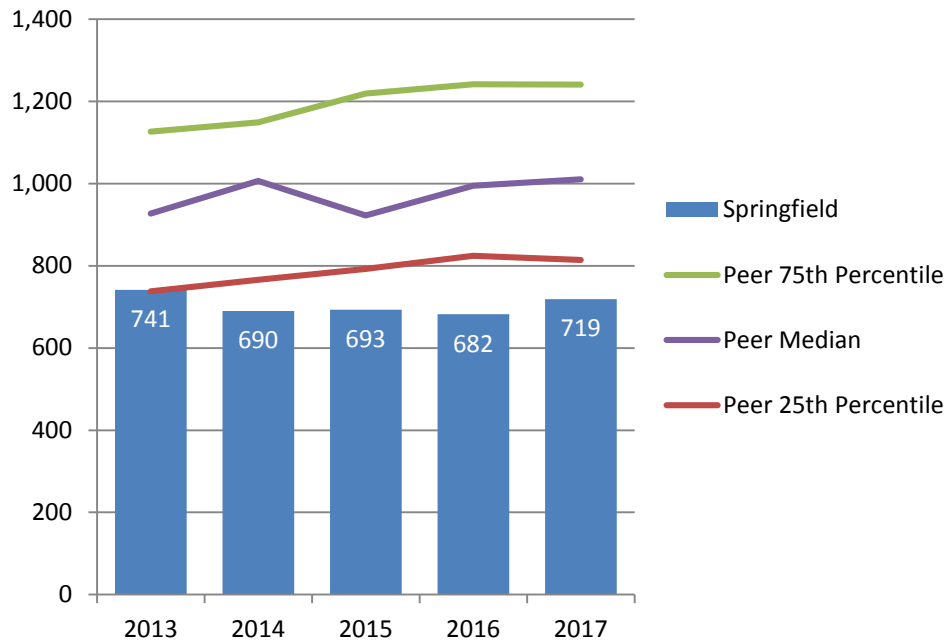


In total, the University of Illinois at Springfield grants more degrees in STEM fields than its peer median.

* Science, Technology, Engineering, and Mathematics.

Note: Only includes bachelor, master and doctoral degrees; excludes associate degrees and certificates. Degrees awarded from July 1 to June 30 of each fiscal year.

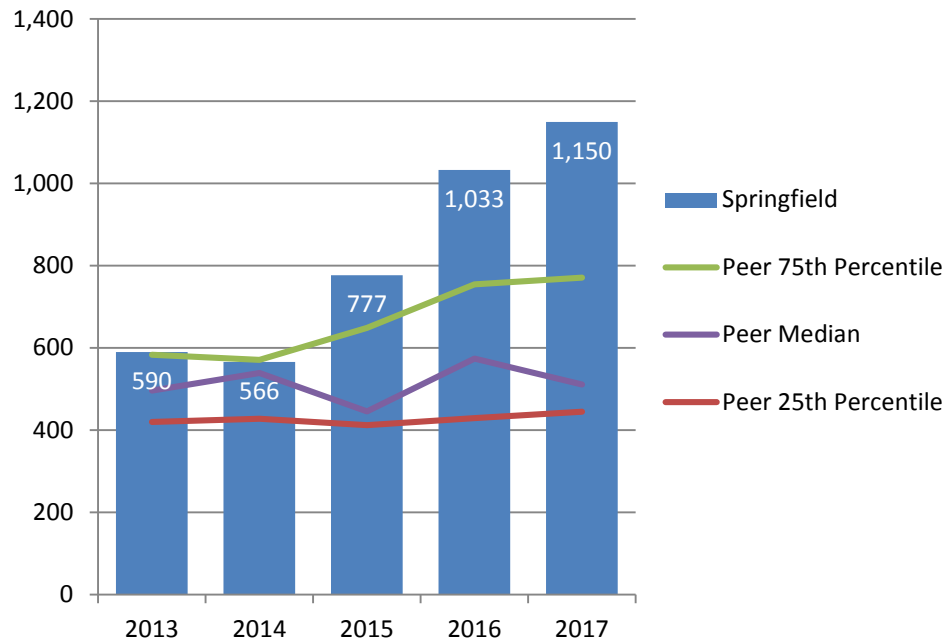
Number of Bachelor Degrees Granted FY 2013 – FY 2017



University of Illinois at Springfield grants fewer undergraduate degrees than its peer median.

Note: Only includes bachelor degrees, excludes associate degrees and certificates. Degrees awarded from July 1 to June 30 of each fiscal year.

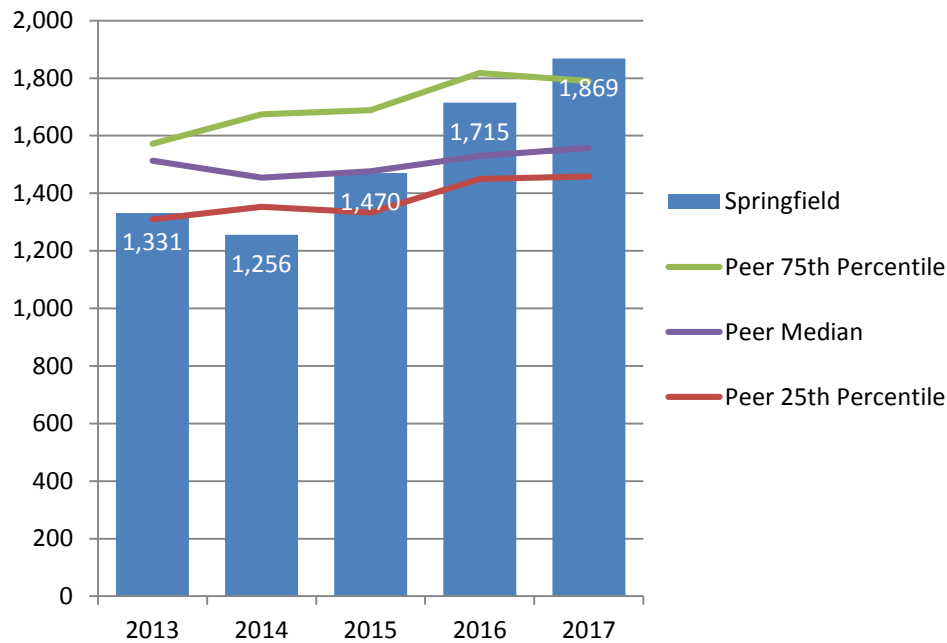
Number of Graduate and Professional Degrees Granted FY 2013 – FY 2017



University of Illinois at Springfield grants more graduate degrees than its peer median.

Note: Only includes master, doctoral, and professional degrees; excludes certificates. Degrees awarded from July 1 to June 30 of each fiscal year.

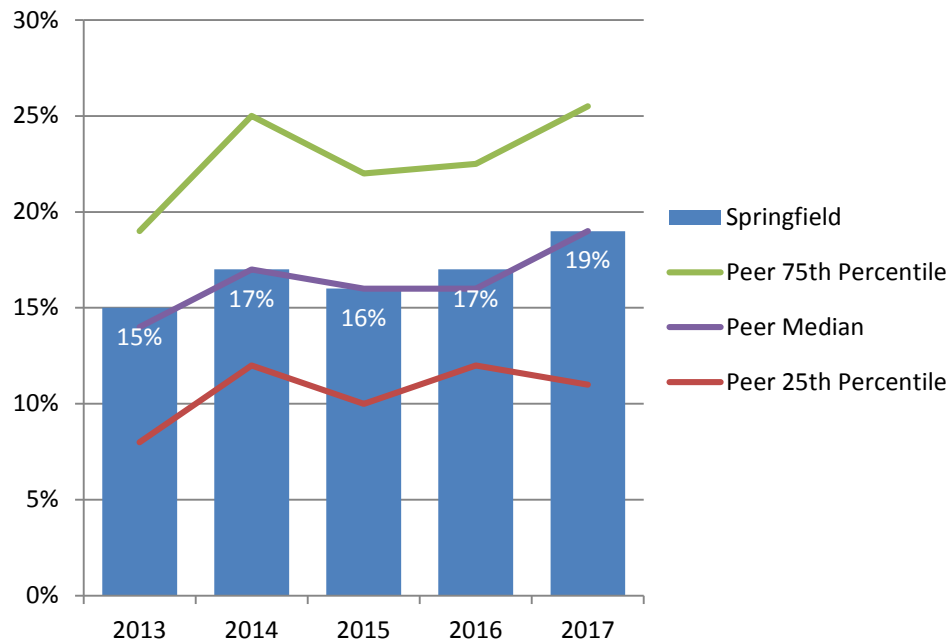
Number of Total Degrees Granted FY 2013 – FY 2017



Since FY 2016, the University of Illinois at Springfield granted more total degrees than its peer median.

Note: Only includes bachelor, master, doctoral, and professional degrees; excludes associate degrees and certificates. Degrees awarded from July 1 to June 30 of each fiscal year.

Percent Bachelor Degrees Granted to Students from Underrepresented* Groups FY 2013 – FY 2017

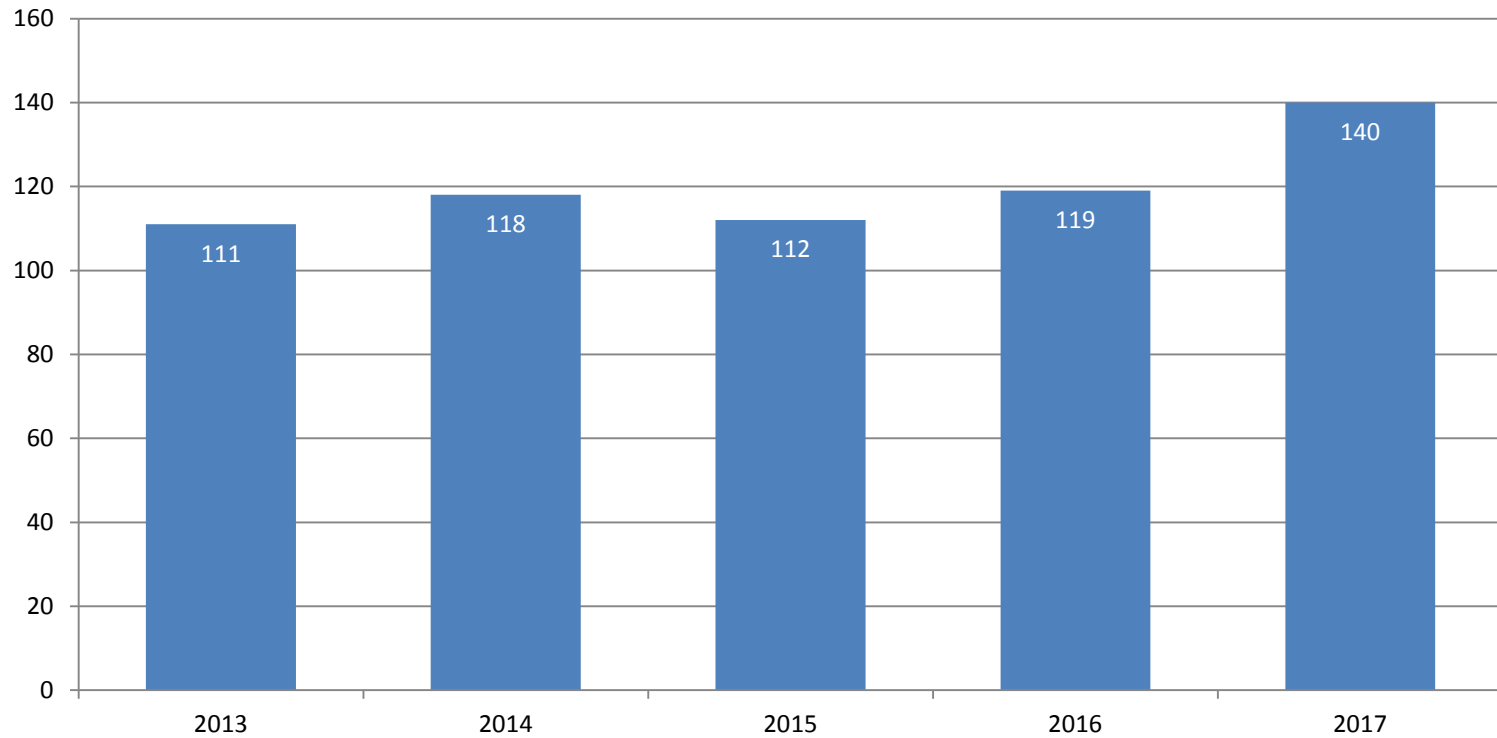


The percent of undergraduate degrees awarded to students from underrepresented groups at the University of Illinois at Springfield is on par with the peer median.

* Includes Black, Hispanic, American Indian, Native Hawaiian/Other Pacific Islander, and multi-racial students.

Note: Only includes bachelor degrees, excludes associate degrees and certificates. Degrees awarded from July 1 to June 30 of each fiscal year.

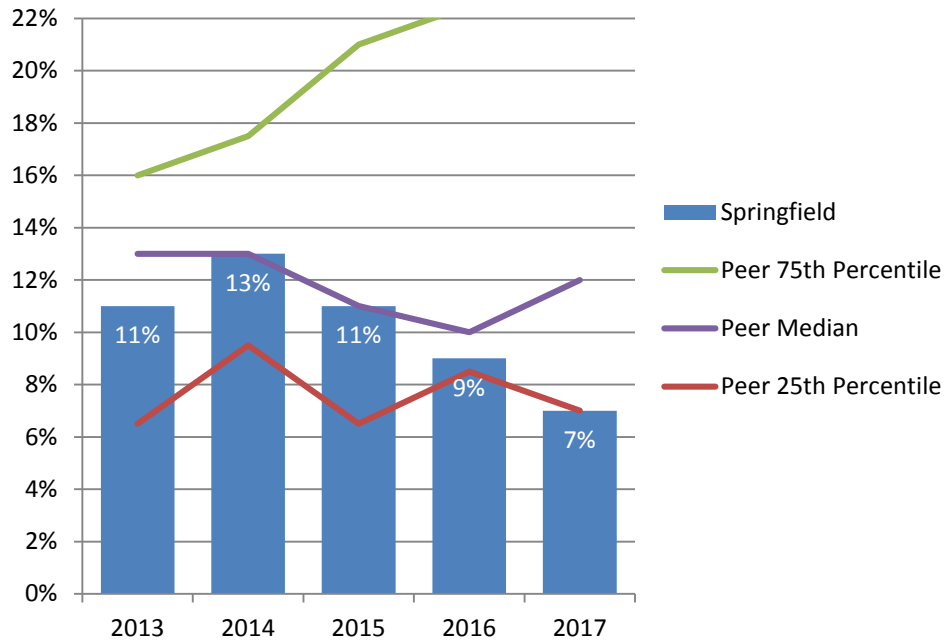
Number of Bachelor Degrees Granted to Students from Underrepresented* Groups FY 2013 – FY 2017



* Includes Black, Hispanic, American Indian, Native Hawaiian/Other Pacific Islander, and multi-racial students.

Note: Only includes bachelor degrees, excludes associate degrees and certificates. Degrees awarded from July 1 to June 30 of each fiscal year.

Percent Graduate and Professional Degrees Granted to Students from Underrepresented* Groups FY 2013 – FY 2017

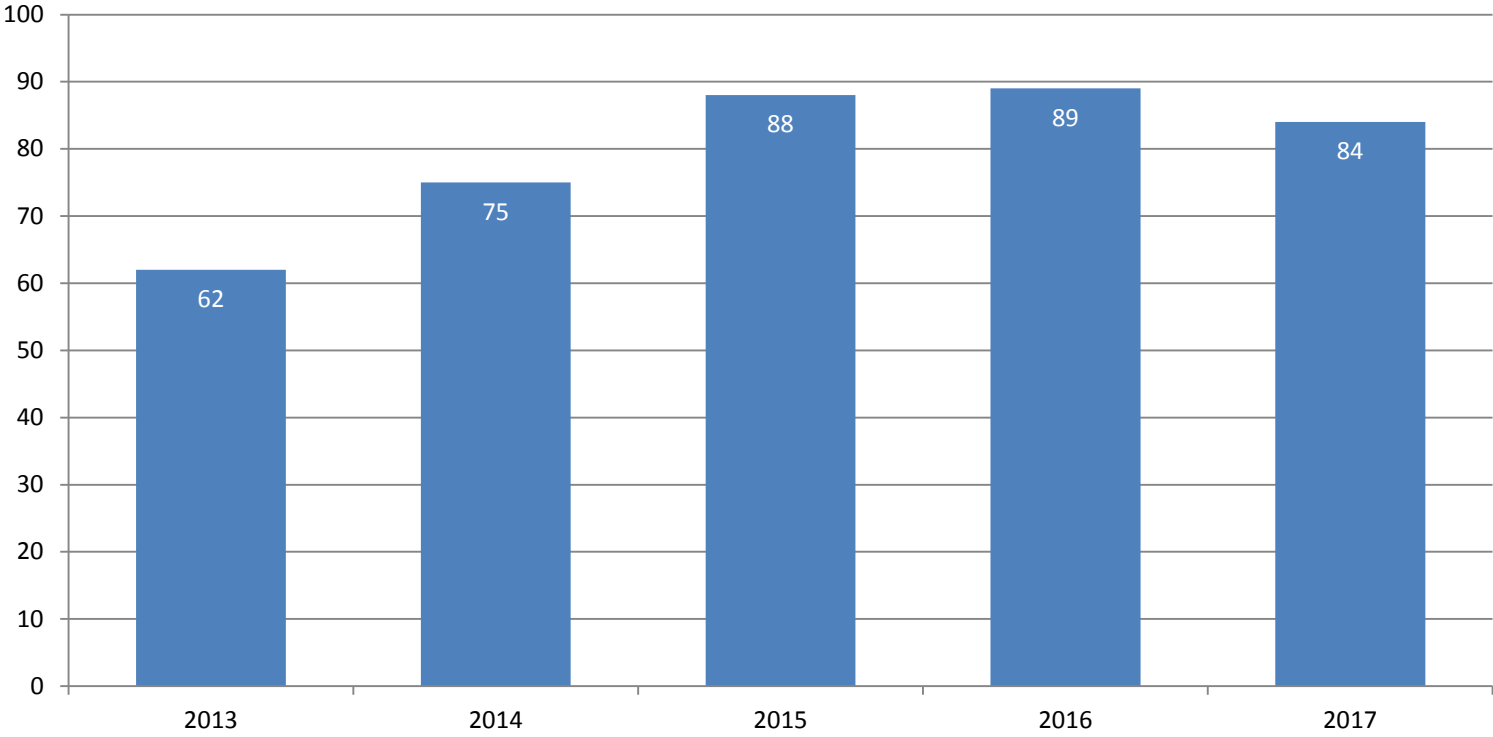


Since FY 2016, the percent of graduate degrees awarded to students from underrepresented groups at the University of Illinois at Springfield is lower than its peer median.

* Includes Black, Hispanic, American Indian, Native Hawaiian/Other Pacific Islander, and multi-racial students.

Note: Only includes master, doctoral, and professional degrees; excludes certificates. Degrees awarded from July 1 to June 30 of each fiscal year.

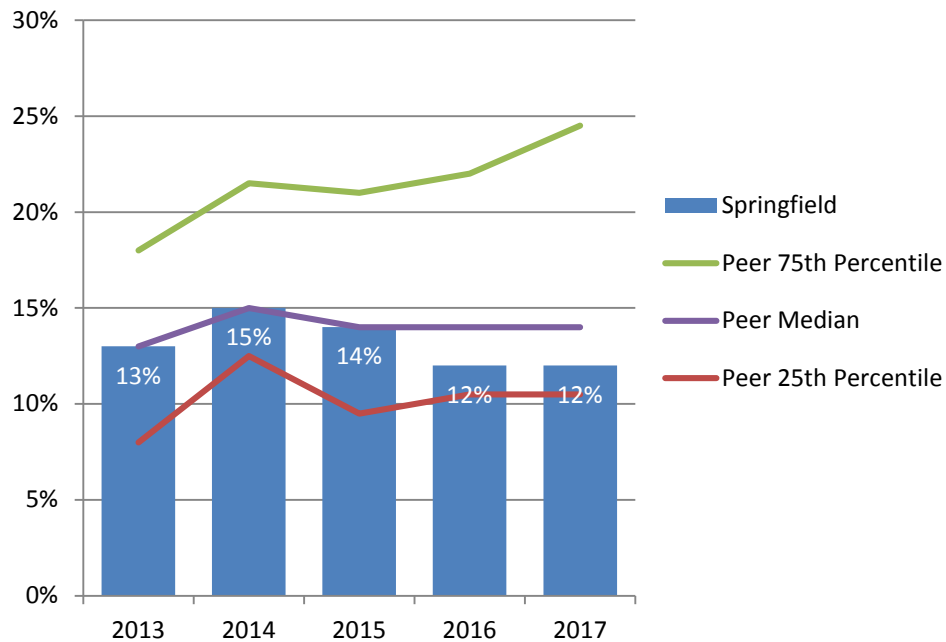
Number of Graduate and Professional Degrees Granted to Students from Underrepresented* Groups FY 2013 – FY 2017



* Includes Black, Hispanic, American Indian, Native Hawaiian/Other Pacific Islander, and multi-racial students.

Note: Only includes master, doctoral, and professional degrees; excludes certificates. Degrees awarded from July 1 to June 30 of each fiscal year.

Percent Total Degrees Granted to Students from Underrepresented* Groups FY 2013 – FY 2017

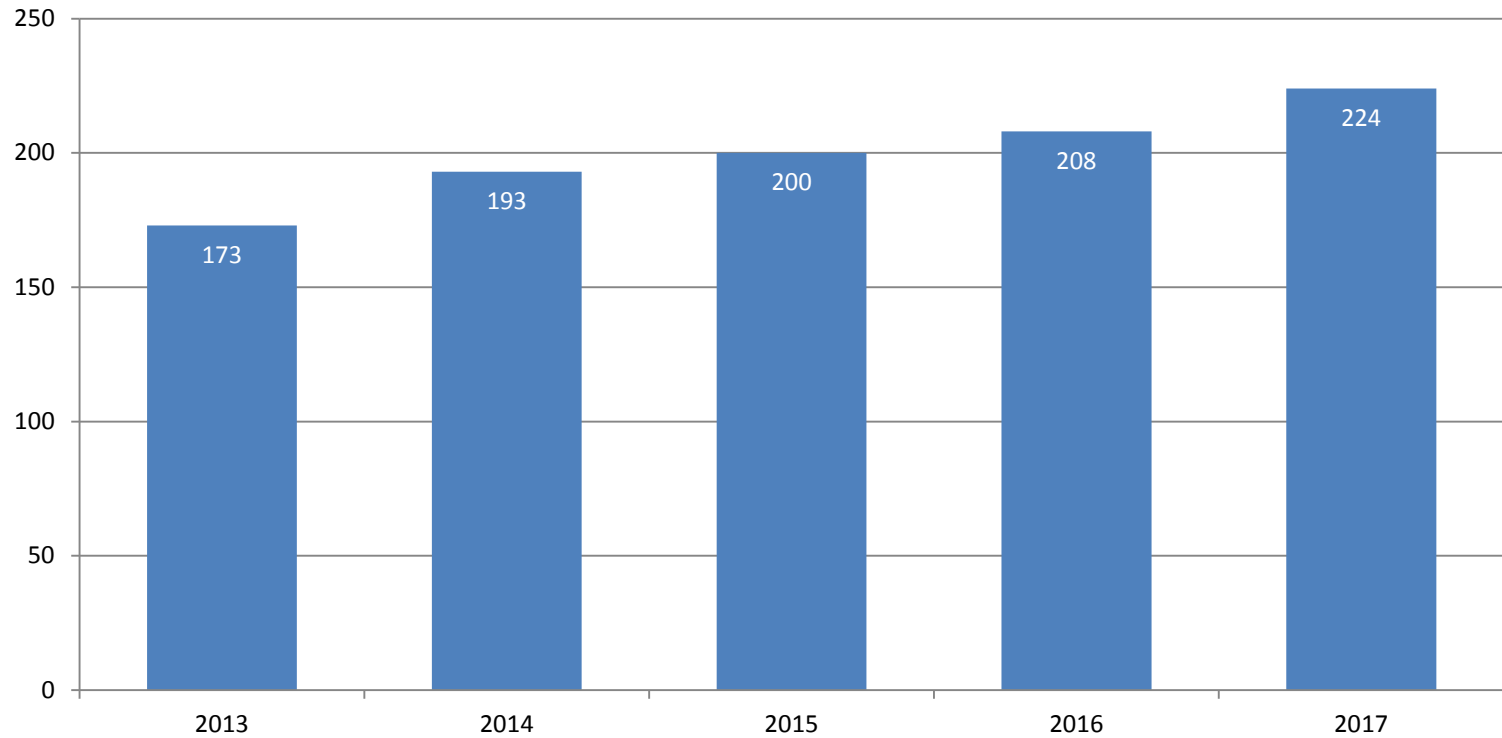


Since FY 2016, the percent of all degrees awarded to students from underrepresented groups at the University of Illinois is lower than its peer median.

* Includes Black, Hispanic, American Indian, Native Hawaiian/Other Pacific Islander, and multi-racial students.

Note: Only includes bachelor, master, doctoral, and professional degrees; excludes associate degrees and certificates. Degrees awarded from July 1 to June 30 of each fiscal year.

Number of Total Degrees Granted to Students from Underrepresented* Groups FY 2013 – FY 2017



* Includes Black, Hispanic, American Indian, Native Hawaiian/Other Pacific Islander, and multi-racial students.

Note: Only includes bachelor, master, doctoral, and professional degrees; excludes associate degrees and certificates. Degrees awarded from July 1 to June 30 of each fiscal year.

University of Illinois at Springfield

Performance Metrics Analysis

ENROLLMENTS, GRADUATION AND RETENTION RATES,
AND DEGREES AWARDED UPDATES:

SUBMITTED BY:
CHANCELLOR SUSAN J. KOCH
NOVEMBER 15, 2018

Areas Meeting or Exceeding Expectations

- Diversity of student population
- Increasing graduation rates among first-time, first-year students
- Undergraduate and graduate STEM degrees

Accomplishments

- Percent of undergraduate students from underrepresented groups is higher than the peer median
- Percent of undergraduate students graduating within four years is higher than the peer median
- Percent of students from underrepresented groups graduating within four years and within six years is higher than the peer median
- Number of bachelor's and graduate degrees granted in STEM fields is higher than the peer median
- New academic programs added in response to market demand
- Student Union completed

Areas Needing Improvement

- Enrollment
- First-time/First-year Student Retention

Strategy to improve enrollment

- **Actions:**
 - Enhance competitive marketing strategies to increase institutional visibility
 - Target strategic Illinois regions
 - Actively engage District 186 in the recruitment of first-time, first-year students
 - EAB Royal & Company partnership
 - PTK College.Fish.org partnership
 - GRE partnership for graduate student recruitment
 - Deploy senior Office of Admissions staff members as leads for online and graduate student recruitment efforts
 - Refine Second Year Experience (SYEP)
 - Continued implementation of innovation online programs
 - Overhaul of print and email pieces and events strategy

Strategy to improve **first-time/first-year student retention**

- **Actions:**
 - Focus on recruiting highly qualified freshmen
 - Make retention an institution-wide priority
 - EAB Student Success Collaborative
 - Continued programming via residential Living/Learning communities

Areas we are watching

- Tuition and fees compared to other Illinois public universities
- Student debt
- Online enrollments