

University of Illinois at Springfield



Dashboard Indicators

PREPARED BY:

UNIVERSITY OFFICE FOR PLANNING AND BUDGETING

OCTOBER 15, 2012

REVISIONS FOR BOARD OF TRUSTEES

NOVEMBER 8, 2012

Peer Groups



University of Illinois at Springfield

Auburn University-Montgomery (AL)

Clark University* (Worcester, MA)

College of Charleston (SC)

Georgia College and State University (Milledgeville, GA)

Iona College* (New Rochelle, NY)

Lake Superior State University (Sault Ste. Marie, MI)

Marist College* (Poughkeepsie, NY)

Northern Michigan University (Marquette, MI)

Shippensburg University of Pennsylvania

State University of New York at Brockport

Trinity University (San Antonio, TX)*

Union College (Schenectady, NY)*

University of South Dakota

University of Wisconsin-Green Bay

* Private Institution

Student Access, Enrollment and Outcomes



University of Illinois at Springfield and Peer Institutions Fall Term Enrollment Fall 2007 – Fall 2011

Institution	All Student					Undergraduate					Graduate and Professional				
	2007	2008	2009	2010	2011	2007	2008	2009	2010	2011	2007	2008	2009	2010	2011
University of Illinois at Springfield	4,855	4,711	4,977	5,174	5,137	2,863	2,889	3,027	3,197	3,112	1,992	1,822	1,950	1,977	2,025
Auburn University - Montgomery	5,138	5,296	5,567	5,817	5,305	4,368	4,469	4,695	4,829	4,403	770	827	872	988	902
Clark University	3,210	3,330	3,416	3,451	3,462	2,320	2,380	2,333	2,317	2,311	890	950	1,083	1,134	1,151
College of Charleston	11,316	11,367	11,772	11,532	11,649	9,923	9,784	10,147	10,121	10,461	1,393	1,583	1,625	1,411	1,188
Georgia College and State University	6,249	6,506	6,633	6,737	6,636	5,319	5,490	5,644	5,715	5,635	930	1,016	989	1,022	1,001
Iona College	4,323	4,375	4,248	4,123	4,065	3,507	3,460	3,344	3,256	3,189	816	915	904	867	876
Lake Superior State University	2,819	2,575	2,588	2,662	2,805	2,799	2,557	2,568	2,588	2,727	20	18	20	74	78
Marist College	5,727	5,828	6,179	6,140	6,303	4,851	5,031	5,330	5,189	5,442	876	797	849	951	861
Northern Michigan University	9,358	9,347	9,428	9,417	9,405	8,634	8,598	8,684	8,719	8,712	724	749	744	698	693
Shippensburg University of Penn	7,765	7,942	8,253	8,326	8,183	6,621	6,733	6,942	7,143	7,132	1,144	1,209	1,311	1,183	1,051
SUNY College at Brockport	8,303	8,275	8,490	8,589	8,413	6,926	6,970	7,119	7,297	7,166	1,377	1,305	1,371	1,292	1,247
Trinity University	2,686	2,703	2,693	2,498	2,535	2,484	2,489	2,487	2,296	2,331	202	214	206	202	204
Union College	2,177	2,240	2,194	2,197	2,220	2,177	2,240	2,194	2,197	2,220	N/A	N/A	N/A	N/A	N/A
University of South Dakota	9,243	9,291	9,617	10,151	9,970	6,844	6,958	7,098	7,220	7,473	2,399	2,333	2,519	2,931	2,497
University of Wisconsin - Green Bay	6,110	6,286	6,638	6,636	6,671	5,911	6,088	6,369	6,389	6,451	199	198	269	247	220

Data Source: IPEDS Data Center. Includes on- and off-campus enrollments.

TASK: Make enrollment growth a top institutional priority.

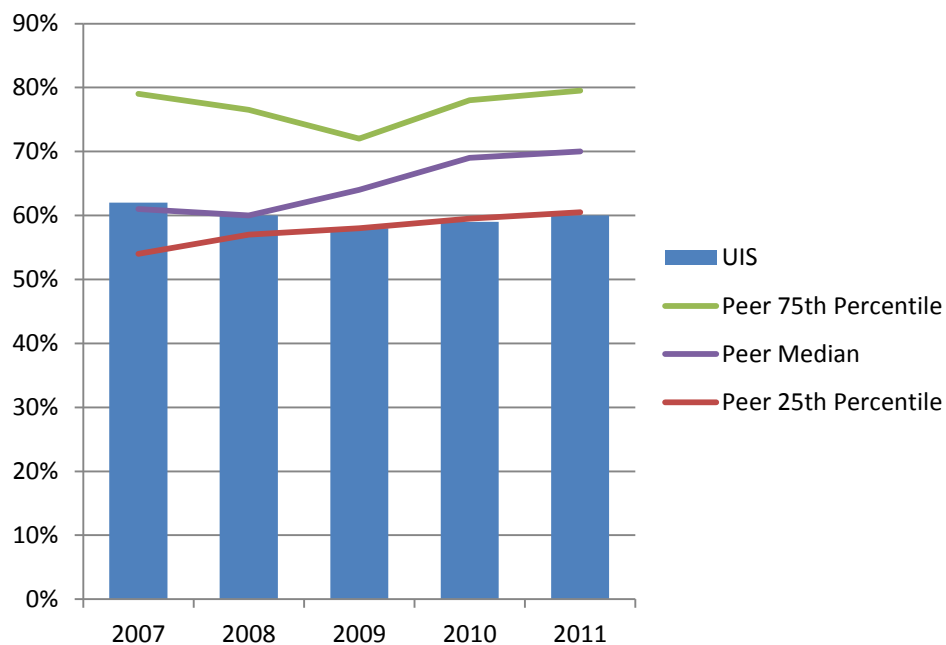
University of Illinois at Springfield and Peer Institutions First-Time Freshmen Enrollment Fall 2007 – Fall 2011

	<u>2007</u>	<u>2008</u>	<u>2009</u>	<u>2010</u>	<u>2011</u>
University of Illinois at Springfield	261	309	288	294	241
Auburn University - Montgomery	630	821	877	930	831
Clark University	574	591	550	578	546
College of Charleston	2,064	1,956	2,143	2,010	2,334
Georgia College and State University	1,201	1,179	1,206	1,203	1,209
Iona College	908	923	792	871	812
Lake Superior State University	483	519	457	514	499
Marist College	1,019	1,022	1,041	1,088	1,174
Northern Michigan University	1,812	1,810	1,757	1,659	1,745
Shippensburg University of Pennsylvania	1,726	1,724	1,679	1,712	1,752
The College at Brockport	1,038	994	1,090	1,048	1,050
Trinity University (San Antonio, TX)	631	655	640	587	636
Union College (Schenectady, NY)	560	580	520	554	572
University of South Dakota	1,184	1,162	1,125	1,175	1,248
University of Wisconsin - Green Bay	1,003	1,017	1,049	906	910

Data Source: IPEDS Data Center.

TASK: Increase freshman enrollment by 16% by AY14.

Percent First-Time Freshmen Applicants Admitted* Fall 2007 – Fall 2011



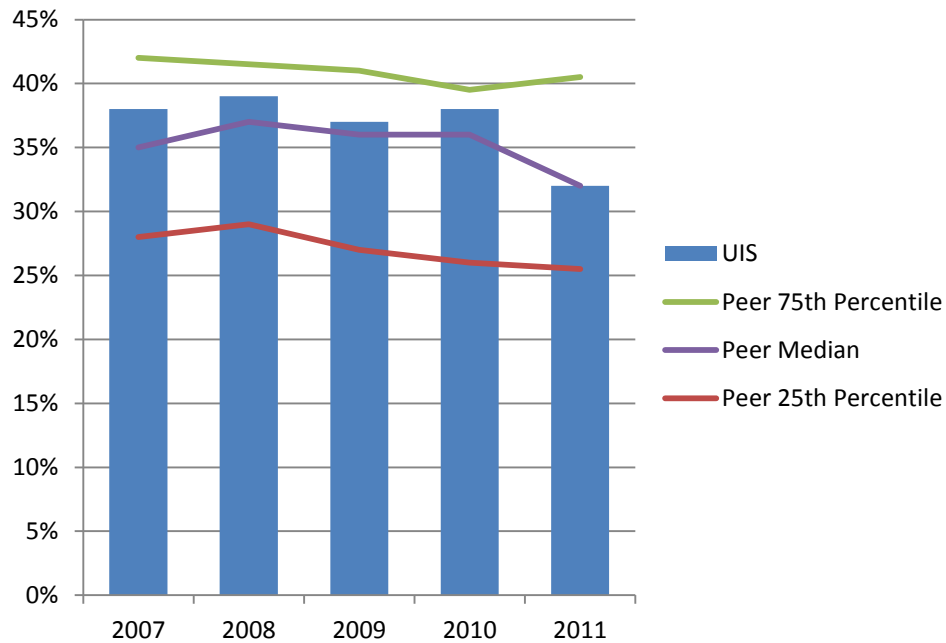
University of Illinois at Springfield admits a lower percent of freshmen applicants compared to the peer median.

TASK: Increase scholarships, especially for more highly academically qualified students.

* Percent Admitted = Percent of (total admits divided by total applicants).

Percent First-Time Freshmen Admissions Yield*

Fall 2007 – Fall 2011

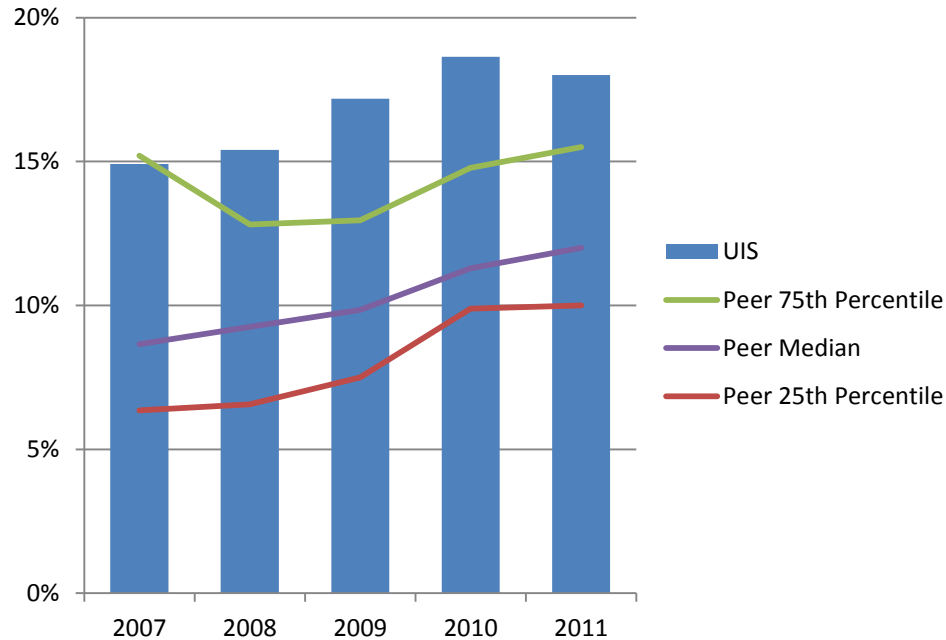


University of Illinois at Springfield has an admissions yield similar to the peer median.

TASK: Review retention rates and increase yield rate on applicants most likely to succeed at UIS.

* Admissions Yield = Percent of (total enrolled divided by total admits).

Percent Enrolled Undergraduate Students from Underrepresented* Groups Fall 2007 – Fall 2011

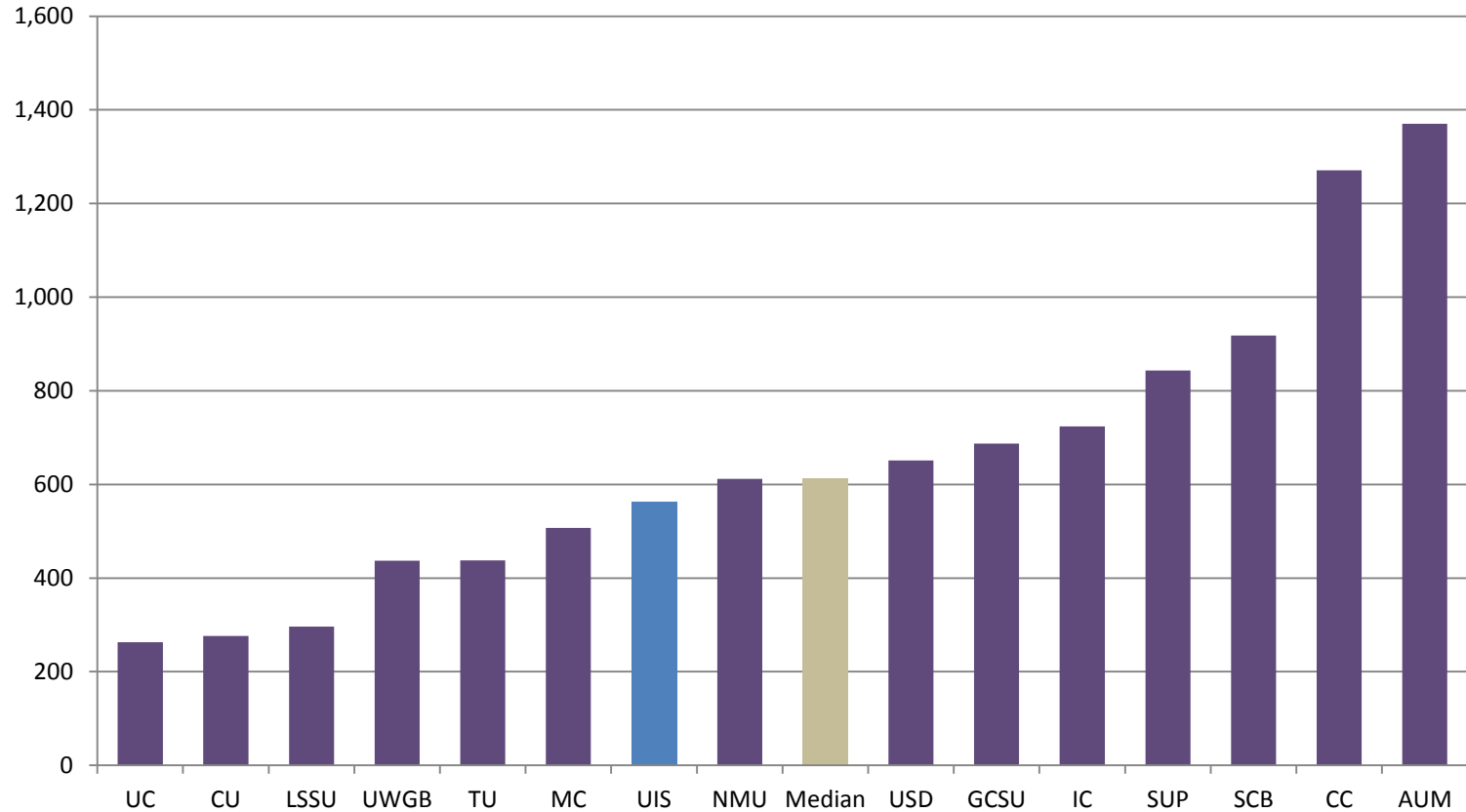


The percent of undergraduate students from underrepresented groups at the University of Illinois at Springfield is higher than the peer median.

TASK: Continue and enhance current practices that result in successful recruitment of undergraduate students from underrepresented groups.

* Includes Black, Hispanic, American Indian, Native Hawaiian/Other Pacific Islander, and multi-racial students.

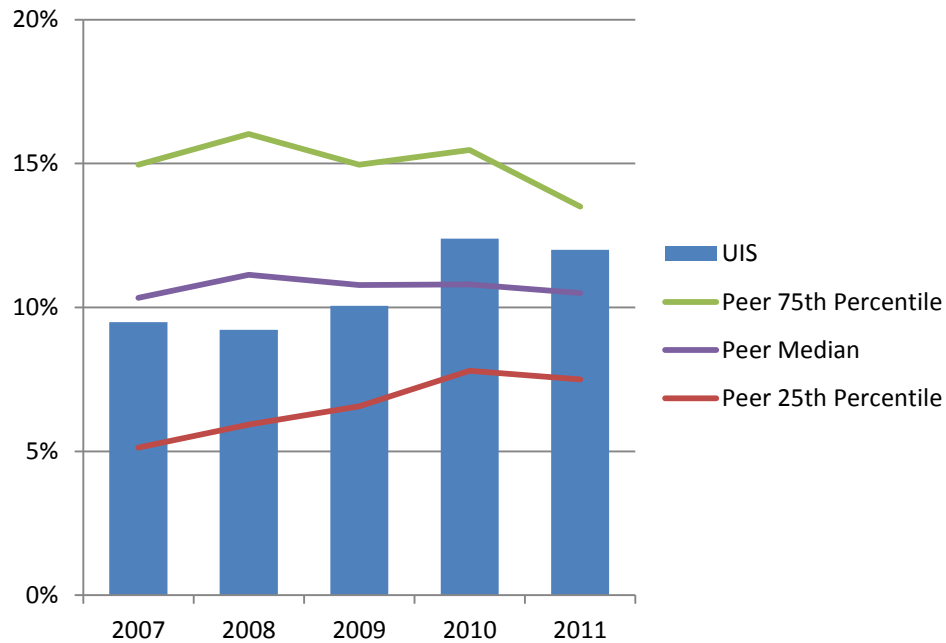
Enrolled Undergraduate Students from Underrepresented* Groups Fall 2011



TASK: Increase overall enrollment with intentional recruitment from underrepresented groups.

* Includes Black, Hispanic, American Indian, Native Hawaiian/Other Pacific Islander, and multi-racial students.

Percent Enrolled Graduate and Professional Students from Underrepresented* Groups Fall 2007 – Fall 2011

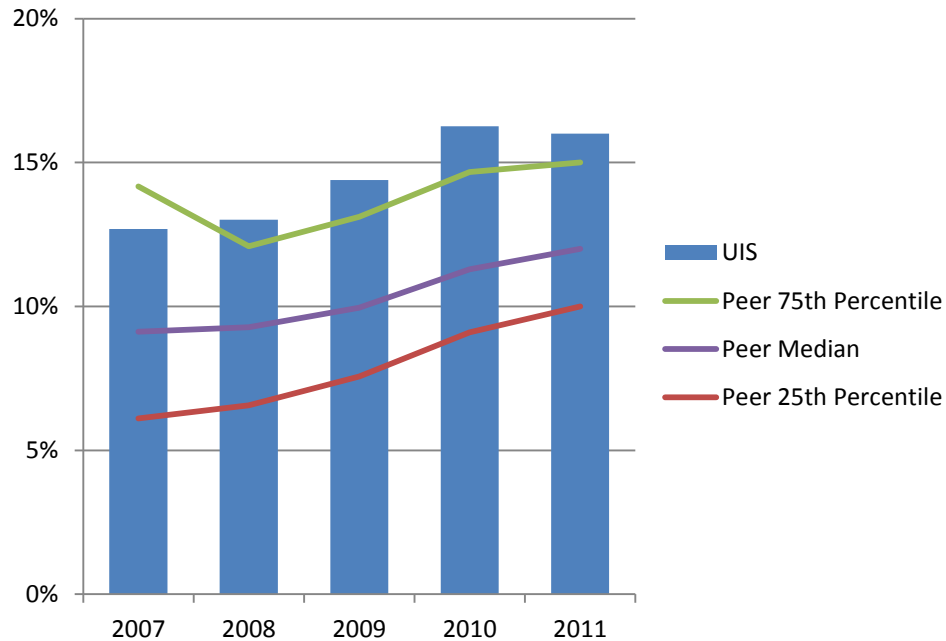


Since 2010, the percent of graduate and professional students from underrepresented groups at the University of Illinois at Springfield is higher than its peer median.

TASK: Increase overall enrollment with intentional recruitment from underrepresented groups.

* Includes Black, Hispanic, American Indian, Native Hawaiian/Other Pacific Islander, and multi-racial students.

Percent All Enrolled Students from Underrepresented* Groups Fall 2007 – Fall 2011

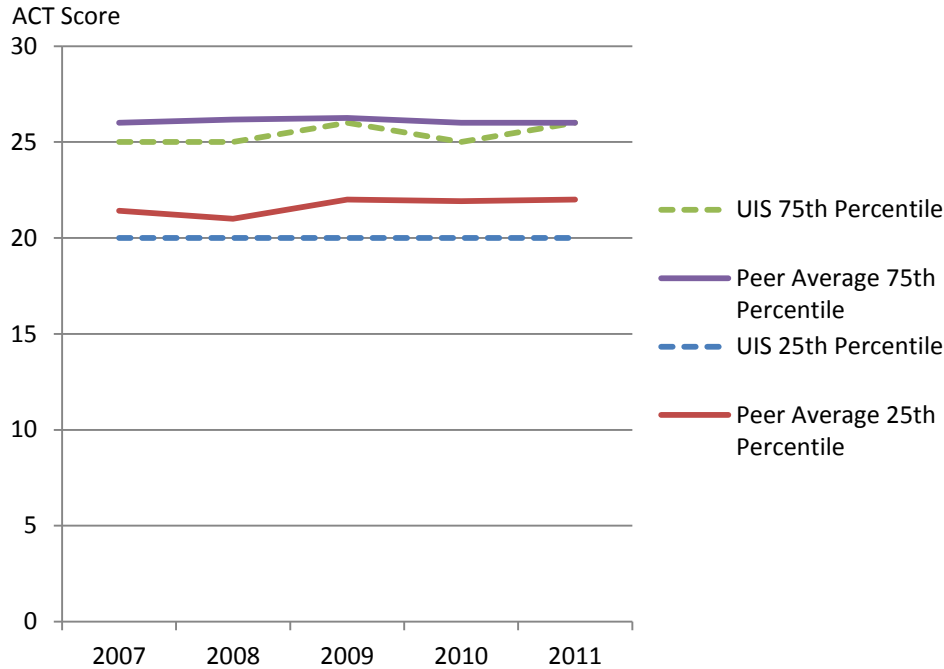


The percent of total students from underrepresented groups at the University of Illinois at Springfield has been consistently higher than its peer median.

TASK: Increase overall enrollment with intentional recruitment from underrepresented groups.

* Includes Black, Hispanic, American Indian, Native Hawaiian/Other Pacific Islander, and multi-racial students.

Entering Freshmen ACT Composite Scores 25th and 75th Percentile Fall 2007 – Fall 2011

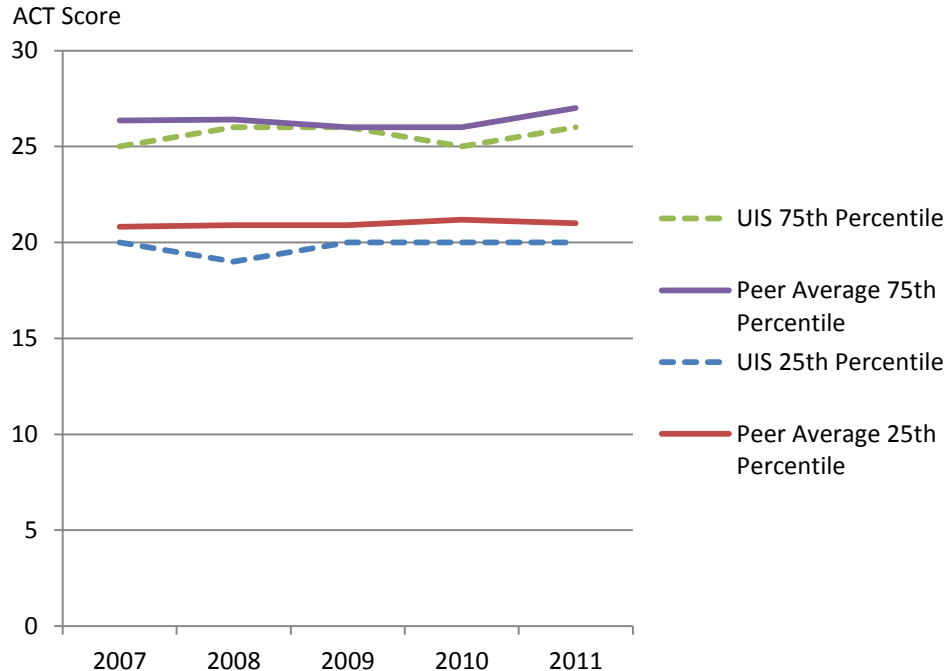


ACT scores of entering freshmen at the University of Illinois at Springfield are slightly below the peer averages.

TASK: Increase yield rate of more academically qualified students and recruit more highly qualified international students through a targeted strategy.

Note: Excludes Iona College, Shippensburg University of Pennsylvania, Clark University, Marist College, and Union College due to lack of available data. Fewer students at peer institutions submit ACT scores.

Entering Freshmen ACT English Score 25th and 75th Percentile Fall 2007 – Fall 2011

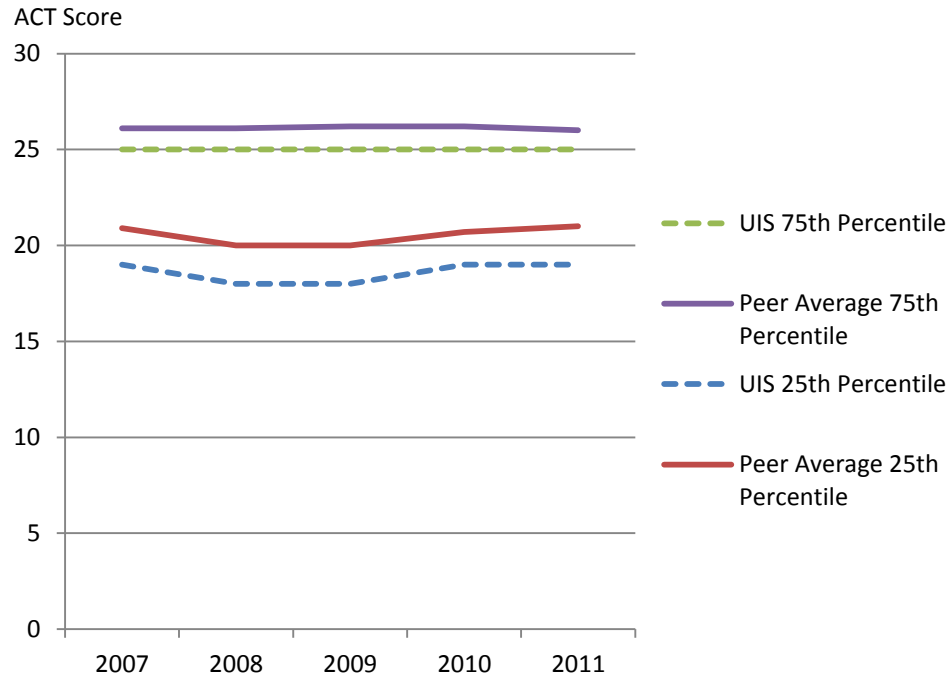


ACT English scores of entering freshmen at the University of Illinois at Springfield are slightly below the peer averages.

TASK: Increase yield rate of more academically qualified students and recruit more highly qualified international students through a targeted strategy.

Note: Excludes Iona College, Shippensburg University of Pennsylvania, Clark University, Marist College, and Union College due to lack of available data. Fewer students at peer institutions submit ACT scores.

Entering Freshmen ACT Math Score 25th and 75th Percentile Fall 2007 – Fall 2011



ACT Math scores of entering freshmen at the University of Illinois at Springfield are slightly below the peer averages.

TASK: Increase yield rate of more academically qualified students and recruit more highly qualified international students through a targeted strategy.

Note: Excludes Iona College, Shippensburg University of Pennsylvania, Clark University, Marist College, and Union College due to lack of available data. Fewer students at peer institutions submit ACT scores.

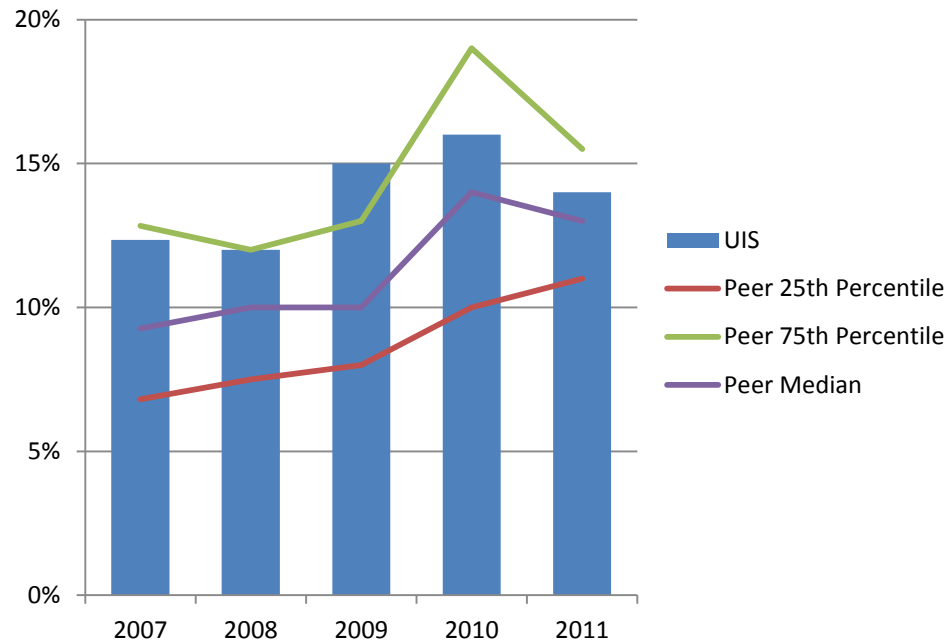
University of Illinois at Springfield and Peer Institutions First-Time Transfers Enrollment Fall 2007 – Fall 2011

	<u>2007</u>	<u>2008</u>	<u>2009</u>	<u>2010</u>	<u>2011</u>
University of Illinois at Springfield	624	661	649	653	606
Auburn University - Montgomery	88	325	333	399	358
Clark University	72	59	32	56	70
College of Charleston	685	707	724	805	756
Georgia College and State University	428	416	455	419	402
Iona College	123	103	105	97	103
Lake Superior State University	259	270	225	228	297
Marist College	274	312	303	290	167
Northern Michigan University	459	431	523	570	577
Shippensburg University of Pennsylvania	380	371	458	447	414
The College at Brockport	907	919	961	1,042	961
Trinity University (San Antonio, TX)	26	20	28	23	21
Union College (Schenectady, NY)	15	33	21	26	28
University of South Dakota	931	586	701	772	820
University of Wisconsin - Green Bay	540	587	592	586	628

Data Source: IPEDS Data Center.

TASK: Explore dual enrollments and develop more articulation agreements with community colleges.

Percent First-Time Transfers from Underrepresented* Groups Fall 2007 – Fall 2011

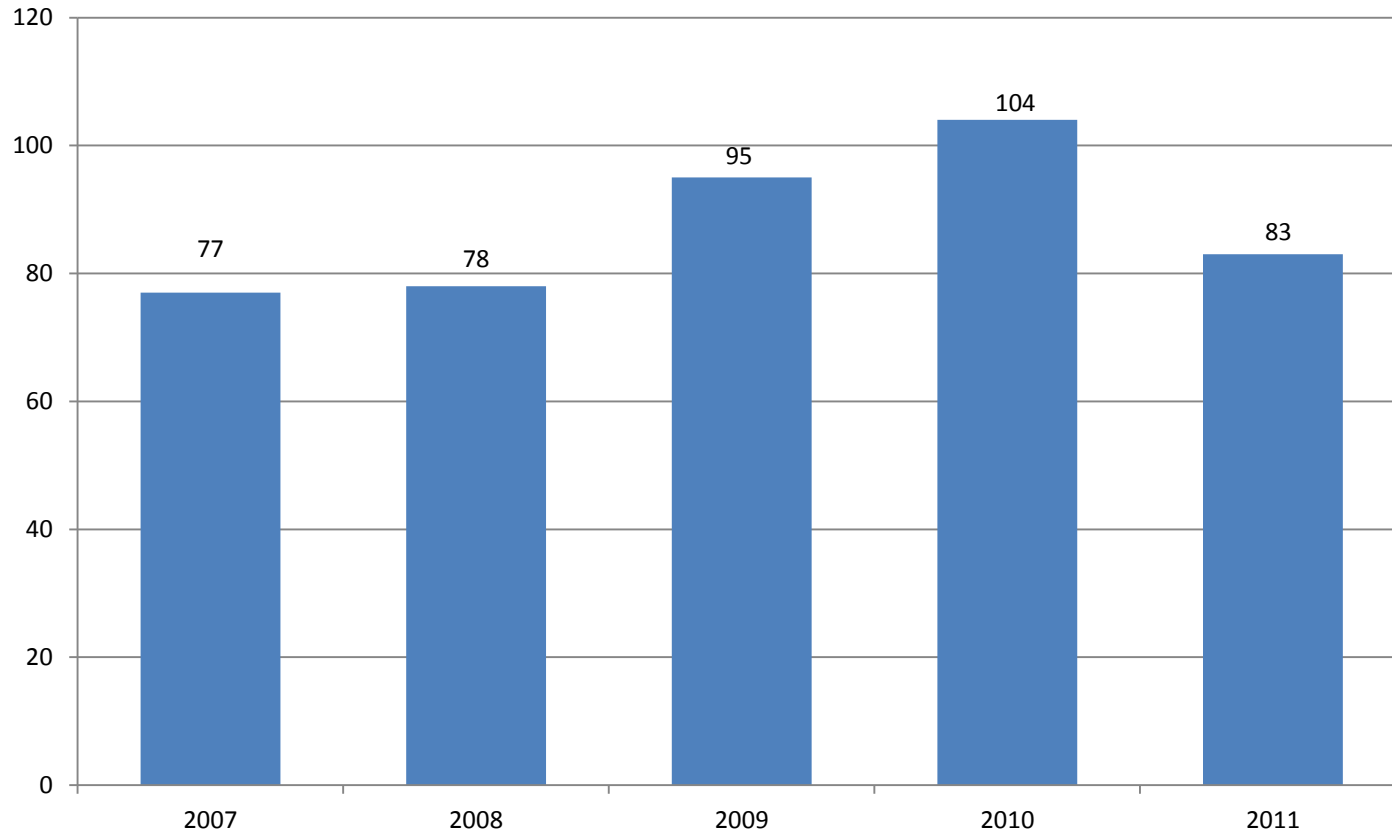


The percent of first-time transfers from underrepresented groups at the University of Illinois at Springfield is higher than its peer median.

TASK: Explore dual enrollments and develop more articulation agreements with community colleges that serve underrepresented groups.

* Includes Black, Hispanic, American Indian, Native Hawaiian/Other Pacific Islander, and multi-racial students.

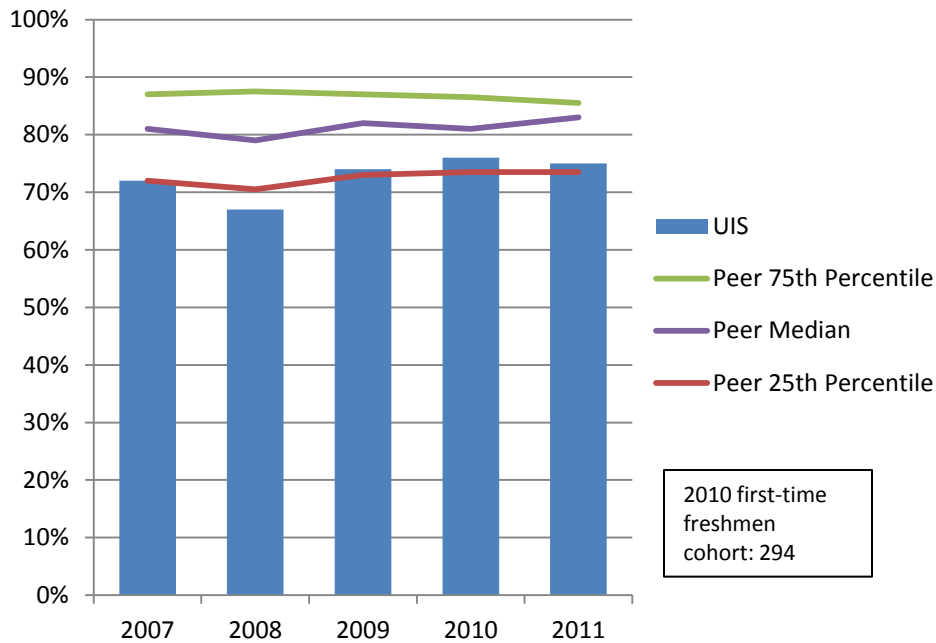
Enrolled First-Time Transfers from Underrepresented* Groups Fall 2007 – Fall 2011



TASK: Explore dual enrollments and develop more articulation agreements with community colleges that serve underrepresented groups.

* Includes Black, Hispanic, American Indian, Native Hawaiian/Other Pacific Islander, and multi-racial students.

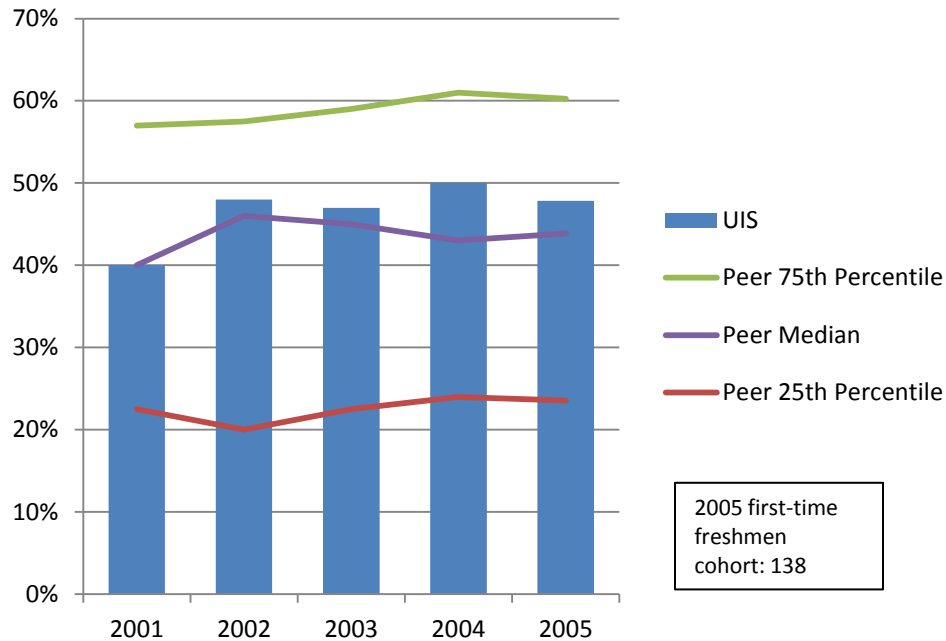
Freshman to Sophomore One-Year Retention Rates Fall 2007 – Fall 2011



Although improving since 2008, freshmen retention rate at University of Illinois at Springfield is lower than the peer median.

TASK: Increase need-based financial aid; design living-learning communities that provide academic and social support.

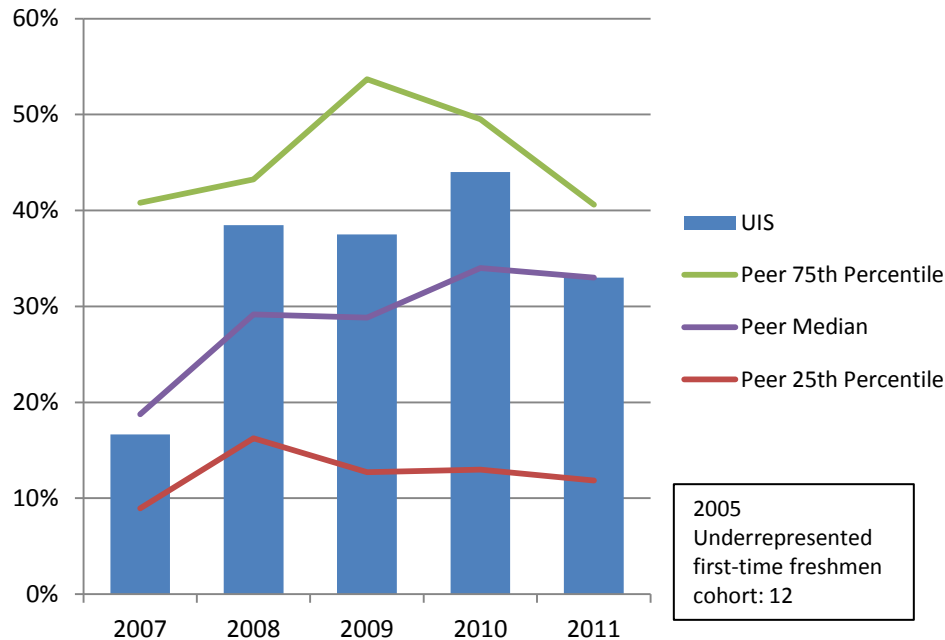
First-Time Freshmen Four-Year Graduation Rates 2001 – 2005 Cohorts



University of Illinois at Springfield graduates a higher percent of undergraduate students within four years compared to its peer median.

TASK: Increase need-based financial aid; improve academic advising and student persistence to graduation.

Percent First-Time Freshmen from Underrepresented* Groups Four-Year Graduation Rates 2001 – 2005 Cohorts

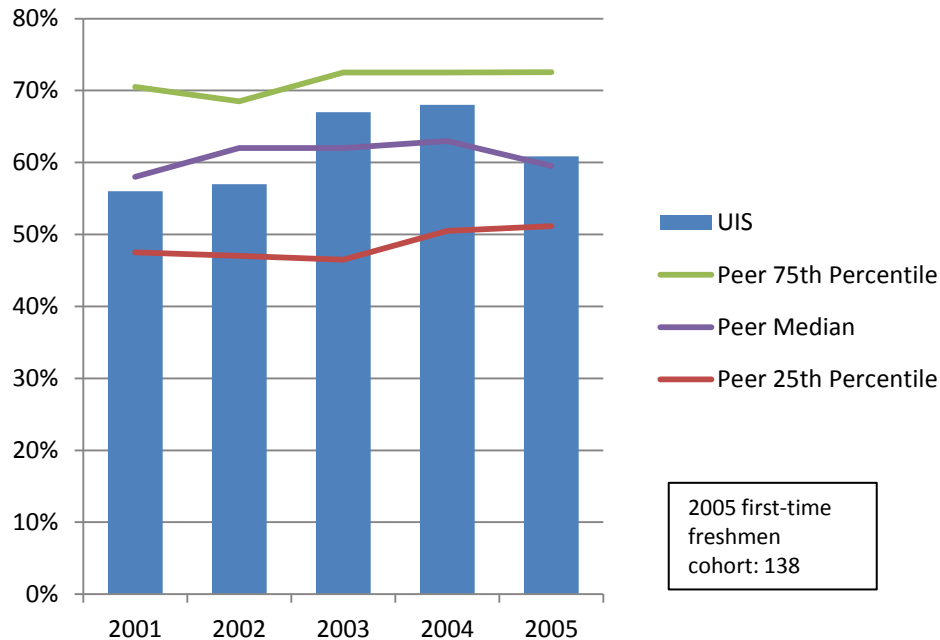


Compared to the peer median, the University of Illinois at Springfield graduates a similar or higher percent of students from underrepresented groups within four years.

TASK: Increase need-based financial aid; provide additional academic and social support for students from underrepresented groups.

* Includes Black, Hispanic, American Indian, Native Hawaiian/Other Pacific Islander, and multi-racial students.

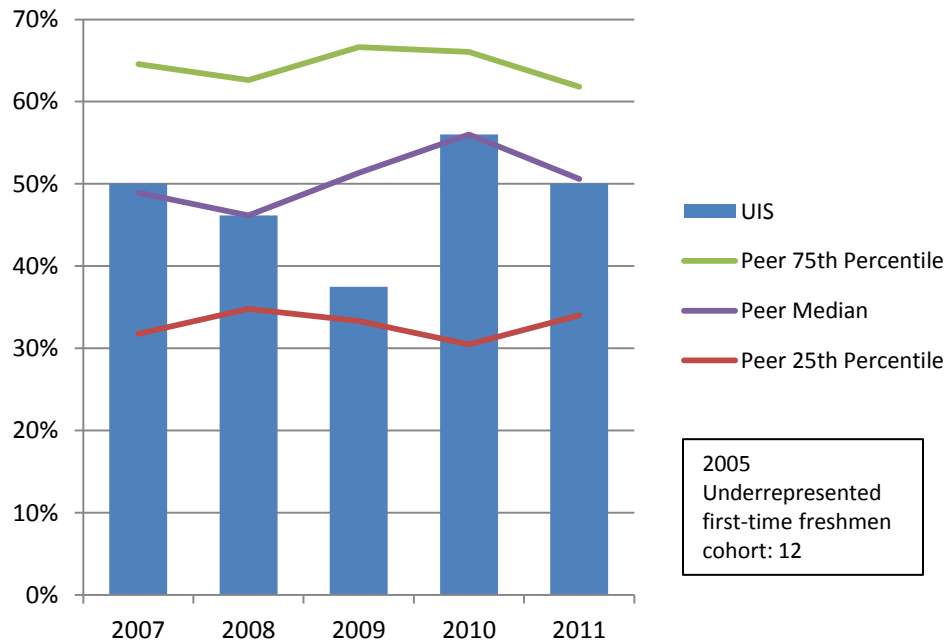
First-Time Freshmen Six-Year Graduation Rates 2001 – 2005 Cohorts



University of Illinois at Springfield graduates a similar or higher percent of students within six years compared to its peer median.

TASK: Increase need-based financial aid and provide more academic support for at-risk students.

Percent First-Time Freshmen from Underrepresented* Groups Six-Year Graduation Rates 2001 – 2005 Cohorts



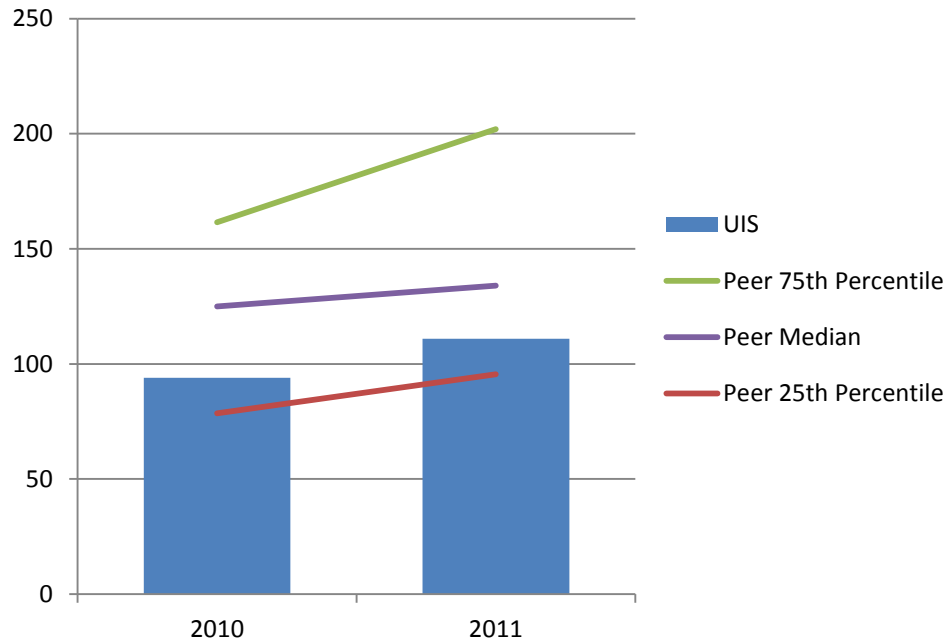
Except for 2009, University of Illinois at Springfield graduated a similar percent of students from underrepresented groups within six years compared to its peer median.

Note: Reported percentages are unstable due to low freshmen enrollments in 2004 and earlier.

TASK: Increase need-based financial aid; provide more academic and social support.

* Includes Black, Hispanic, American Indian, Native Hawaiian/Other Pacific Islander, and multi-racial students.

Number of Degrees Granted in STEM* Fields - Bachelor's FY 2010 – FY 2011

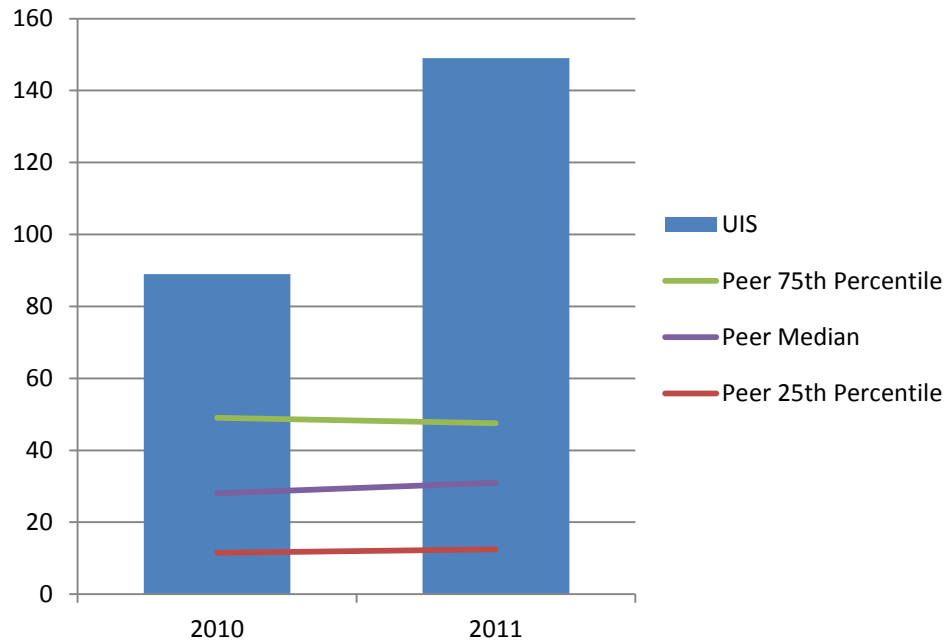


University of Illinois at Springfield grants fewer undergraduate degrees in STEM fields than its peer median.

TASK: Consider additional undergraduate STEM programs and develop joint admission agreements for UIS graduates with medical and professional schools.

* Science, Technology, Engineering, and Mathematics.

Number of Degrees Granted in STEM* Fields - Master's and Doctorate FY 2010 – FY 2011

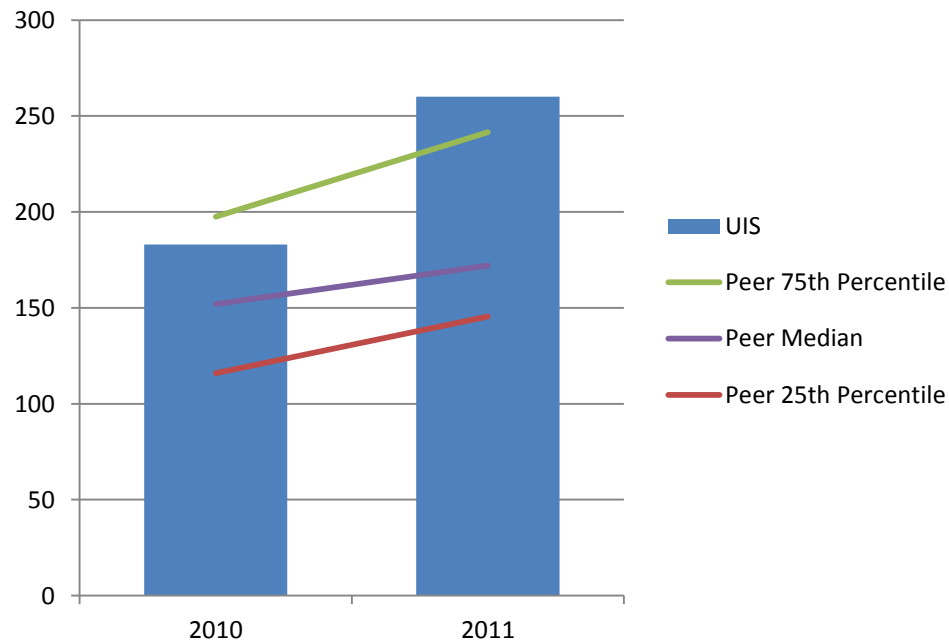


University of Illinois at Springfield grants more graduate degrees in STEM fields than its peer median.

TASK: Increase enrollment in master's-level STEM programs.

* Science, Technology, Engineering, and Mathematics.

Number of Degrees Granted in STEM* Fields - Total Degrees FY 2010 – FY 2011

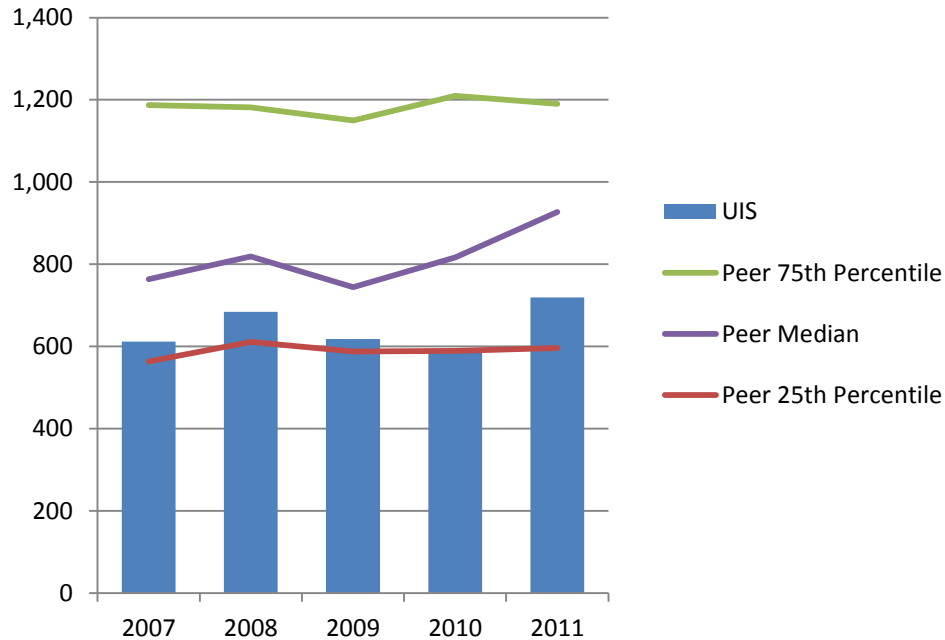


University of Illinois at Springfield grants more degrees in STEM fields than its peer median.

TASK: Consider more undergraduate programs in STEM fields and maintain strong graduate programs.

* Science, Technology, Engineering, and Mathematics.

Number of Degrees Granted – Bachelor's FY 2007 – FY 2011

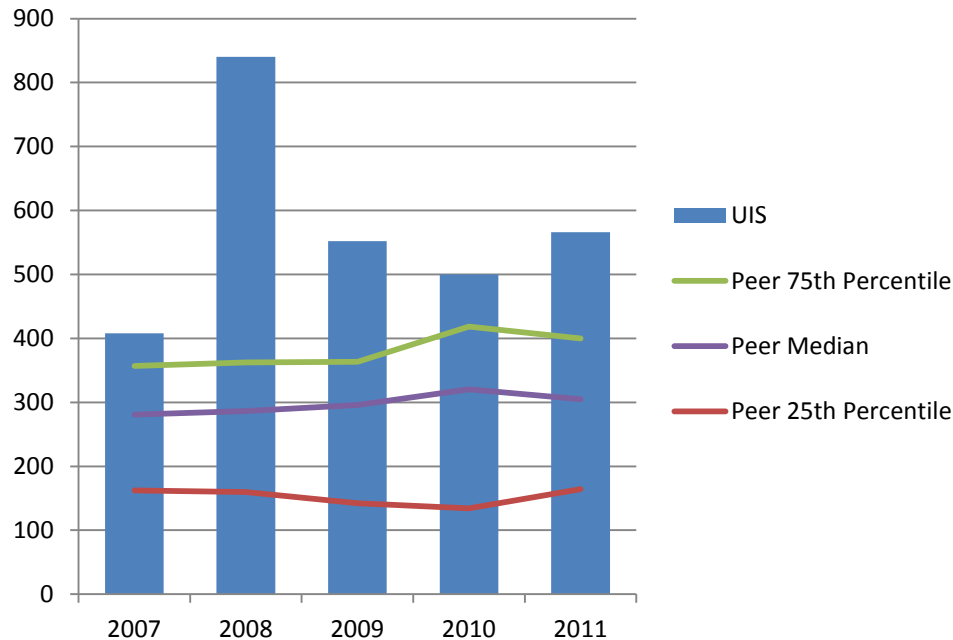


University of Illinois at Springfield grants fewer undergraduate degrees than its peer median.

TASK: Increase overall enrollment and add academic programs in high-demand areas.

Note: Only includes bachelor's degrees, excludes associate degrees and certificates. Degrees awarded from July 1 to June 30 of each fiscal year.

Number of Degrees Granted – Master's and Doctoral FY 2007 – FY 2011

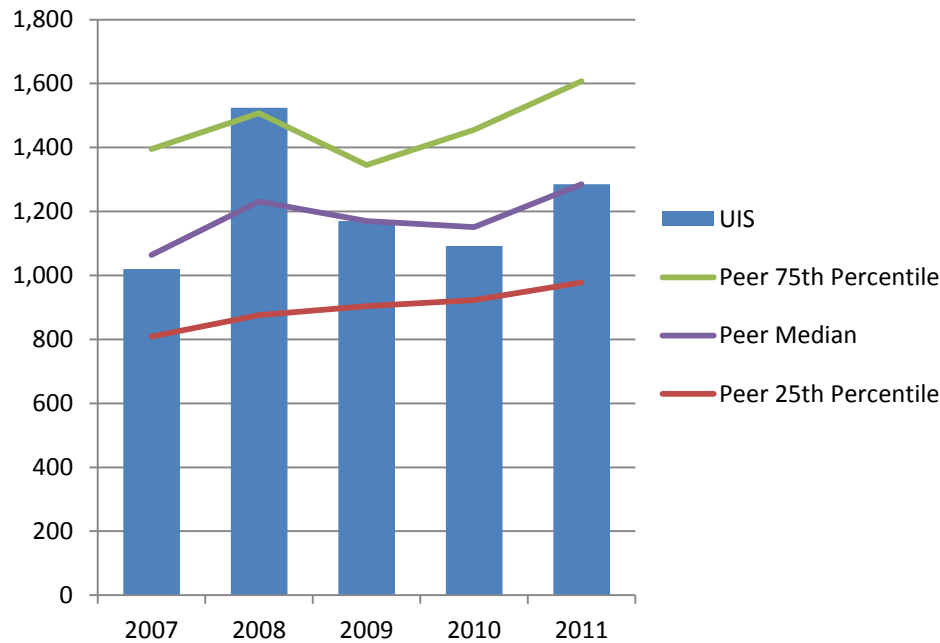


University of Illinois at Springfield grants more graduate degrees than its peer median.

TASK: Increase enrollment in high-demand graduate programs.

Note: Only includes master's and doctoral degrees, excludes certificates. Degrees awarded from July 1 to June 30 of each fiscal year.

Number of Degrees Granted – Total Degrees FY 2007 – FY 2011

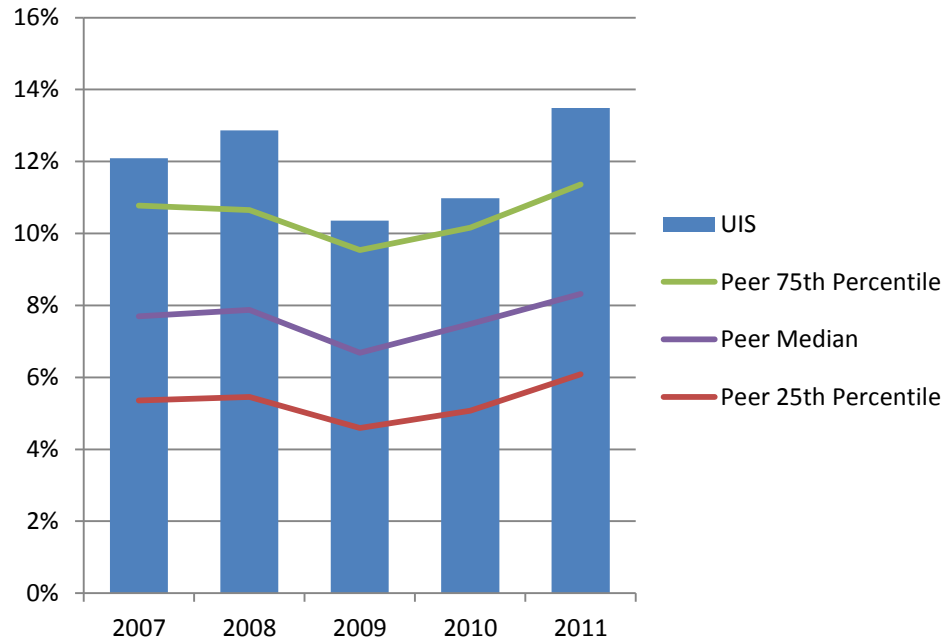


The number of degrees granted at University of Illinois at Springfield is on par with its peer median.

TASK: Increase overall enrollment and add academic programs in high-demand areas.

Note: Only includes bachelor's, master's and doctoral degrees; excludes associate degrees and certificates. Degrees awarded from July 1 to June 30 of each fiscal year.

Percent Bachelor's Degrees Granted to Students from Underrepresented* Groups FY 2007 – FY 2011



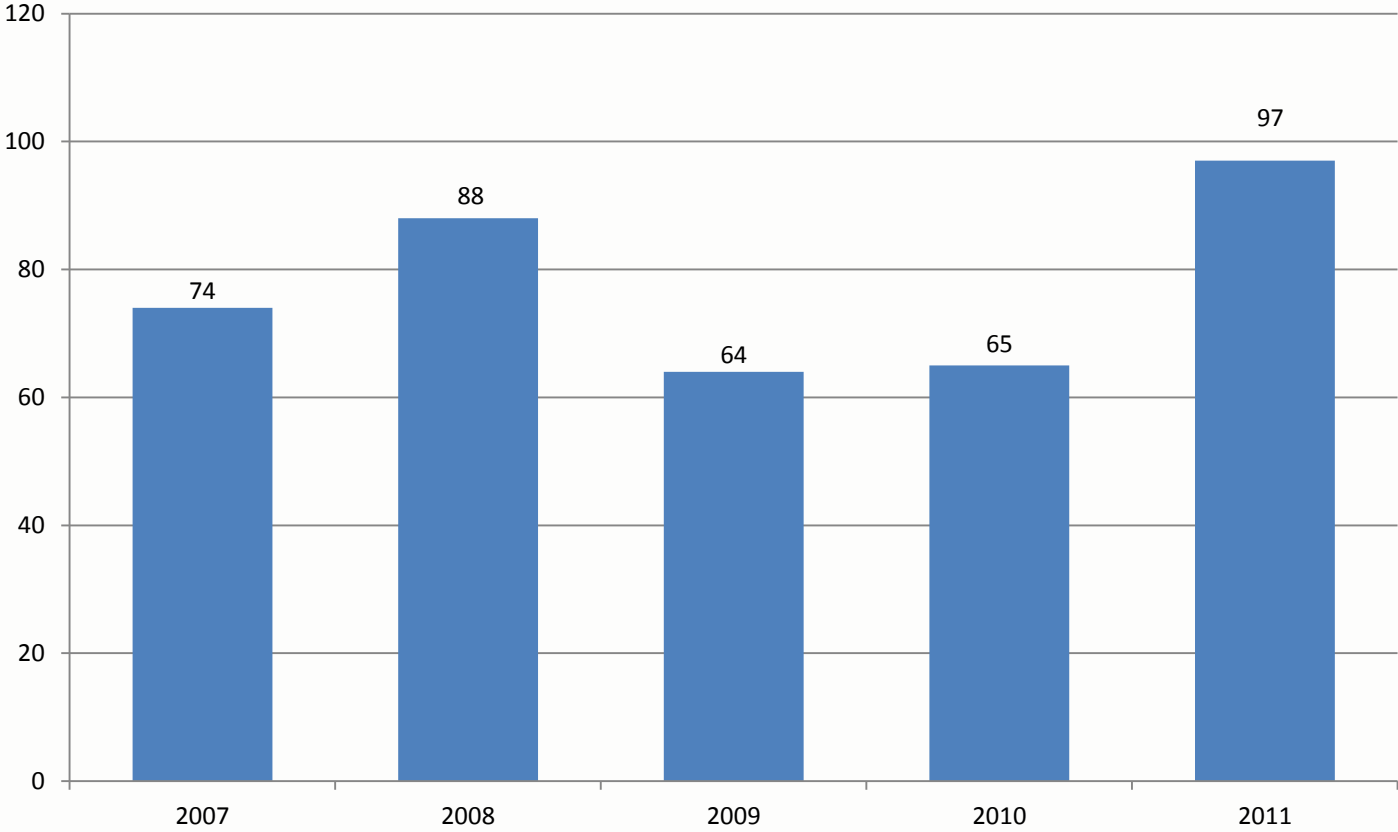
The percent of undergraduate degrees awarded to students from underrepresented groups at the University of Illinois at Springfield is higher than its peer median.

TASK: Increase need-based financial aid and academic support services for students from underrepresented groups.

* Includes Black, Hispanic, American Indian, Native Hawaiian/Other Pacific Islander, and multi-racial students.

Note: Only includes bachelor's degrees, excludes associate degrees and certificates. Degrees awarded from July 1 to June 30 of each fiscal year.

Number of Bachelor's Degrees Granted to Students from Underrepresented* Groups FY 2007 – FY 2011

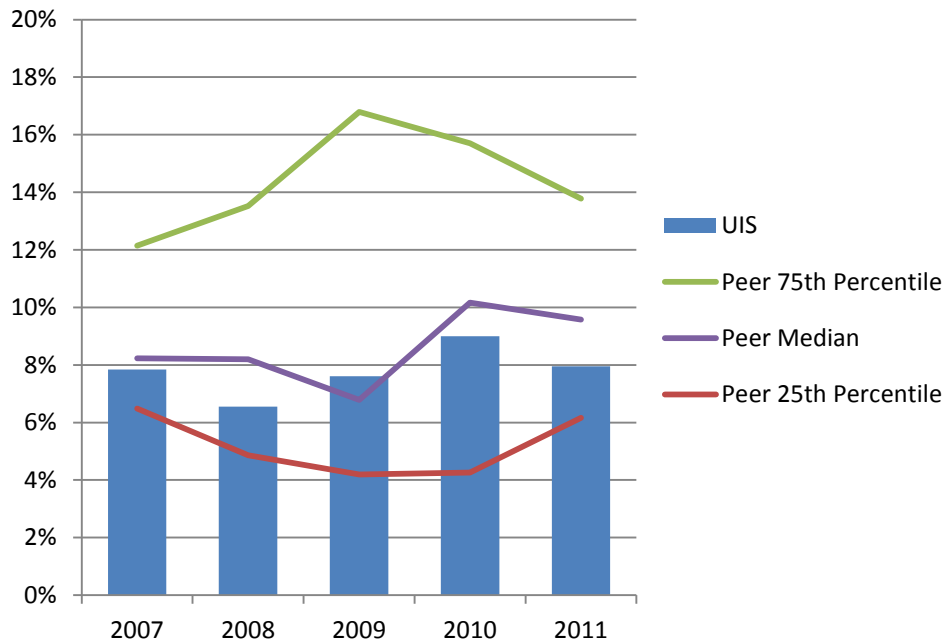


TASK: Increase need-based financial aid for students from underrepresented groups.

* Includes Black, Hispanic, American Indian, Native Hawaiian/Other Pacific Islander, and multi-racial students.

Note: Only includes bachelor's degrees, excludes associate degrees and certificates. Degrees awarded from July 1 to June 30 of each fiscal year.

Percent Master's and Doctoral Degrees Granted to Students from Underrepresented* Groups FY 2007 – FY 2011



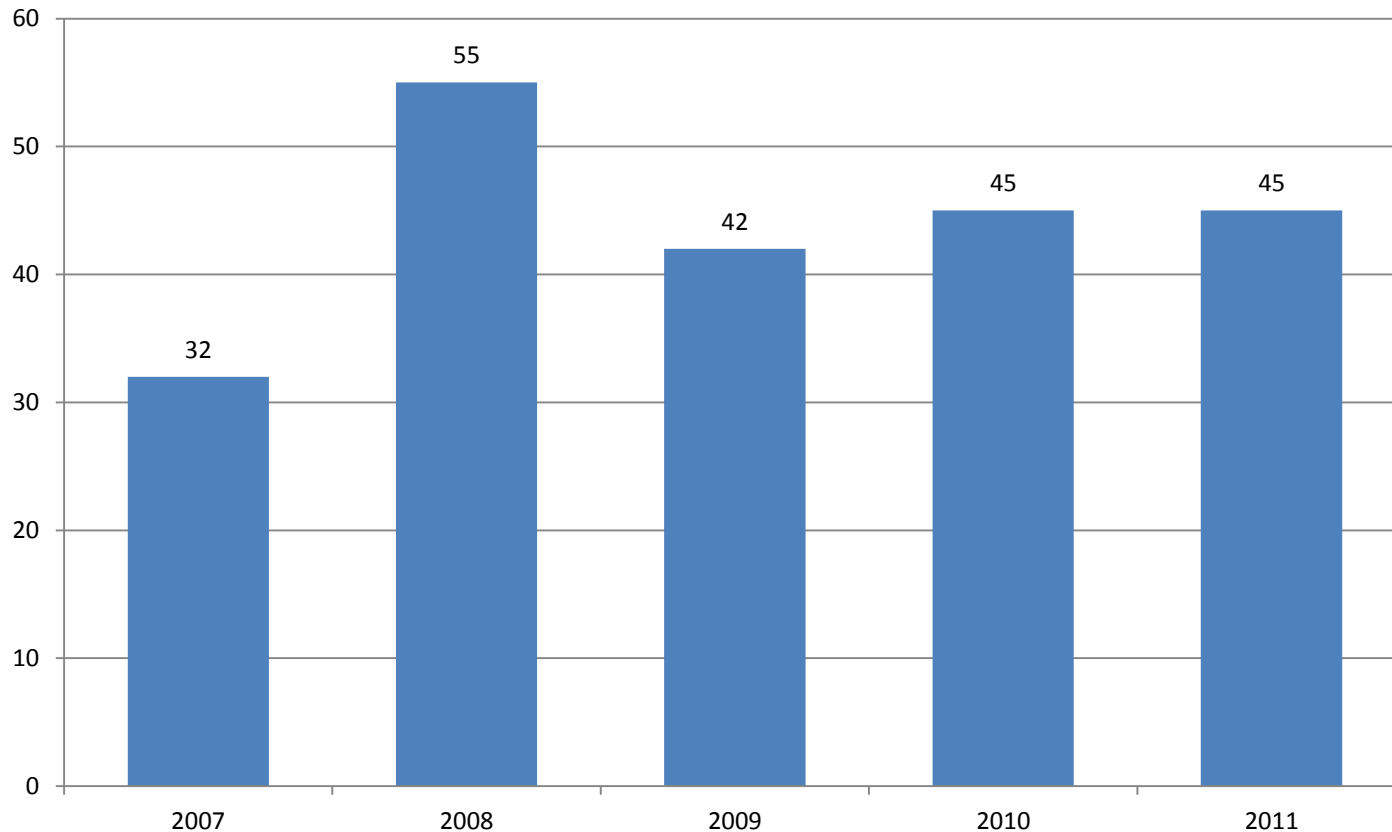
The percent of graduate degrees awarded to students from underrepresented groups at the University of Illinois at Springfield is slightly lower than its peer median.

TASK: Enhance graduate recruitment efforts for students from underrepresented groups.

* Includes Black, Hispanic, American Indian, Native Hawaiian/Other Pacific Islander, and multi-racial students.

Note: Only includes master's and doctoral degrees, excludes certificates. Degrees awarded from July 1 to June 30 of each fiscal year.

Number of Master's and Doctoral Degrees Granted to Students from Underrepresented* Groups FY 2007 – FY 2011

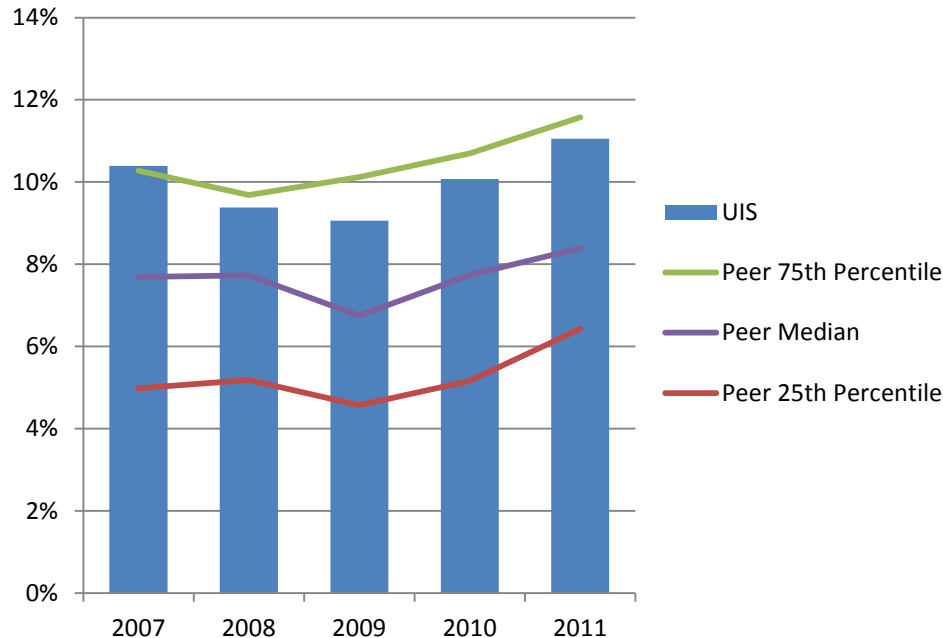


TASK: Enhance graduate recruitment efforts for students from underrepresented groups.

* Includes Black, Hispanic, American Indian, Native Hawaiian/Other Pacific Islander, and multi-racial students.

Note: Only includes master's and doctoral degrees, excludes certificates. Degrees awarded from July 1 to June 30 of each fiscal year.

Percent Total Degrees Granted to Students from Underrepresented* Groups FY 2007 – FY 2011



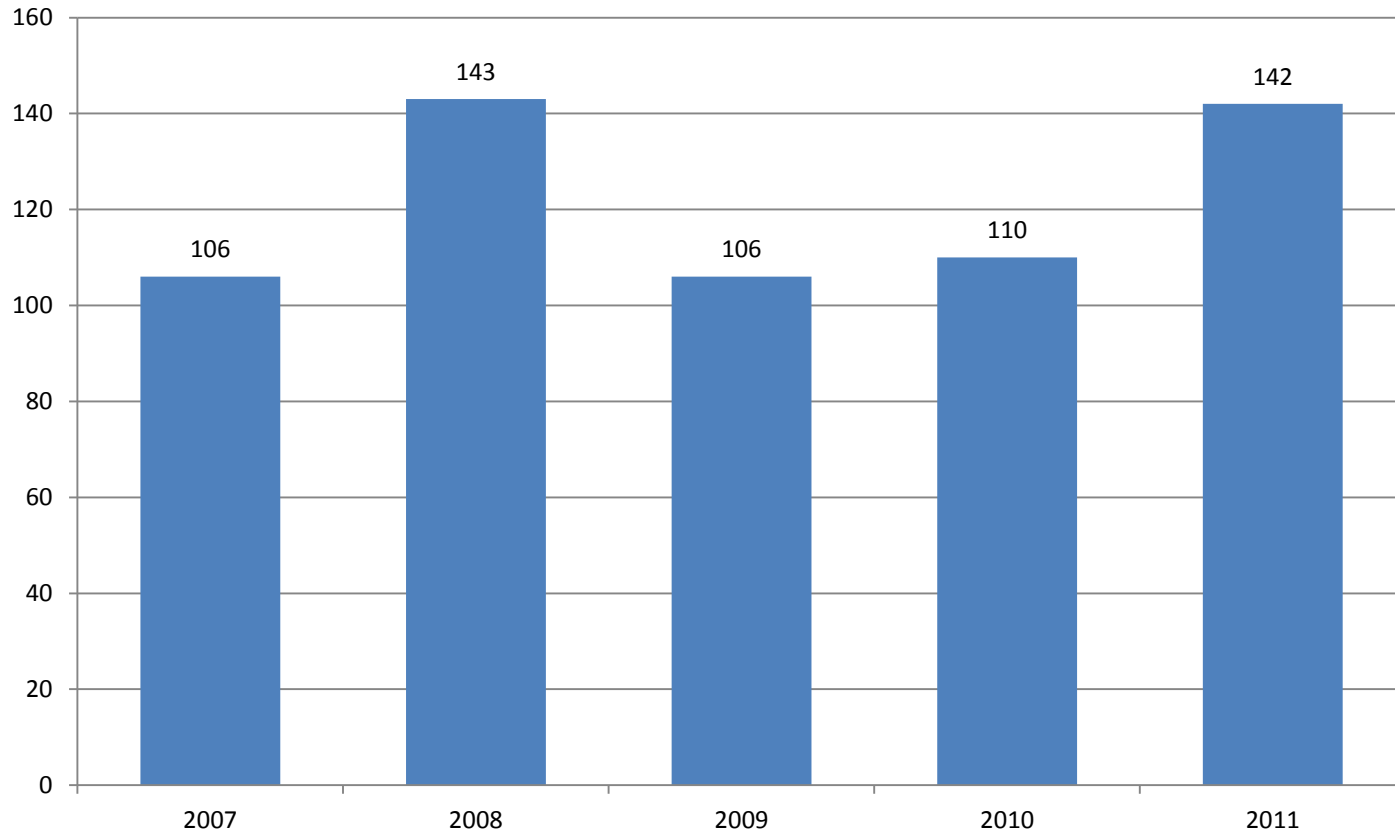
The percent of all degrees awarded to students from underrepresented groups at the University of Illinois at Springfield is higher than its peer median.

TASK: Continue to recruit students from underrepresented groups effectively and expand efforts in geographical areas where we are successful.

* Includes Black, Hispanic, American Indian, Native Hawaiian/Other Pacific Islander, and multi-racial students.

Note: Only includes bachelor's, master's and doctoral degrees; excludes associate degrees and certificates. Degrees awarded from July 1 to June 30 of each fiscal year.

Number of Total Degrees Granted to Students from Underrepresented* Groups FY 2007 – FY 2011



TASK: Continue to recruit students from underrepresented groups effectively and expand efforts in geographical areas where we are successful.

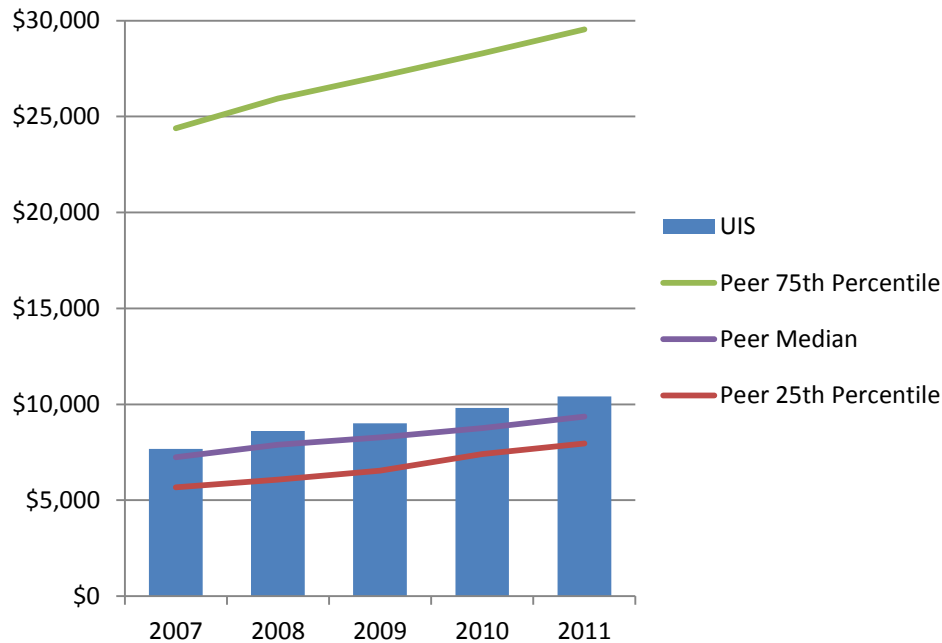
* Includes Black, Hispanic, American Indian, Native Hawaiian/Other Pacific Islander, and multi-racial students.

Note: Only includes bachelor's, master's and doctoral degrees; excludes associate degrees and certificates. Degrees awarded from July 1 to June 30 of each fiscal year.

Tuition and Financial Aid



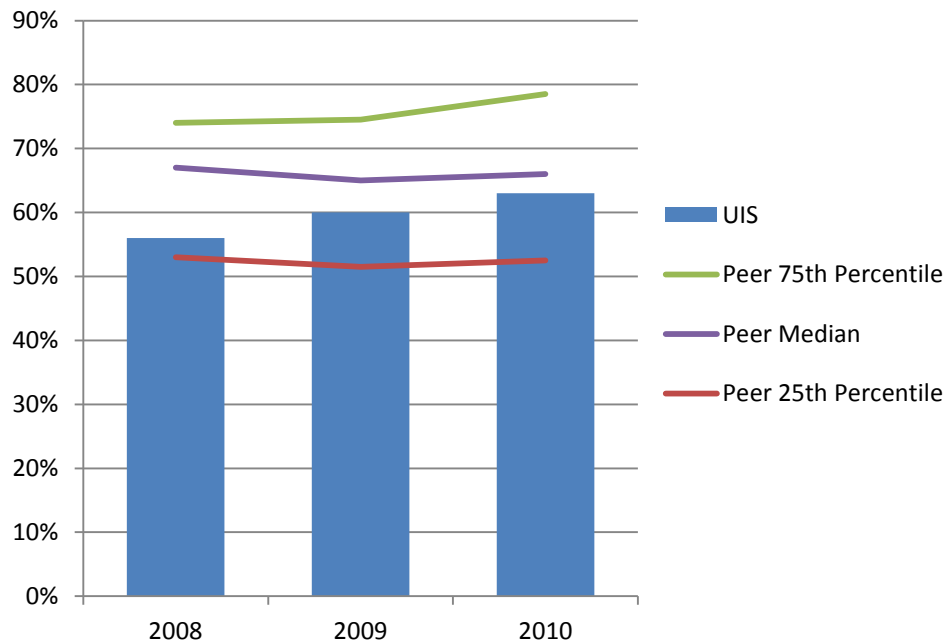
Undergraduate In-State Tuition and Fees Per Academic Year AY 2007 – AY 2011



Undergraduate tuition and fees at the University of Illinois at Springfield are higher than its peer median.

TASK: Promote high-quality education at an affordable price. Increase scholarship support and continue to deploy financial aid as strategically as possible.

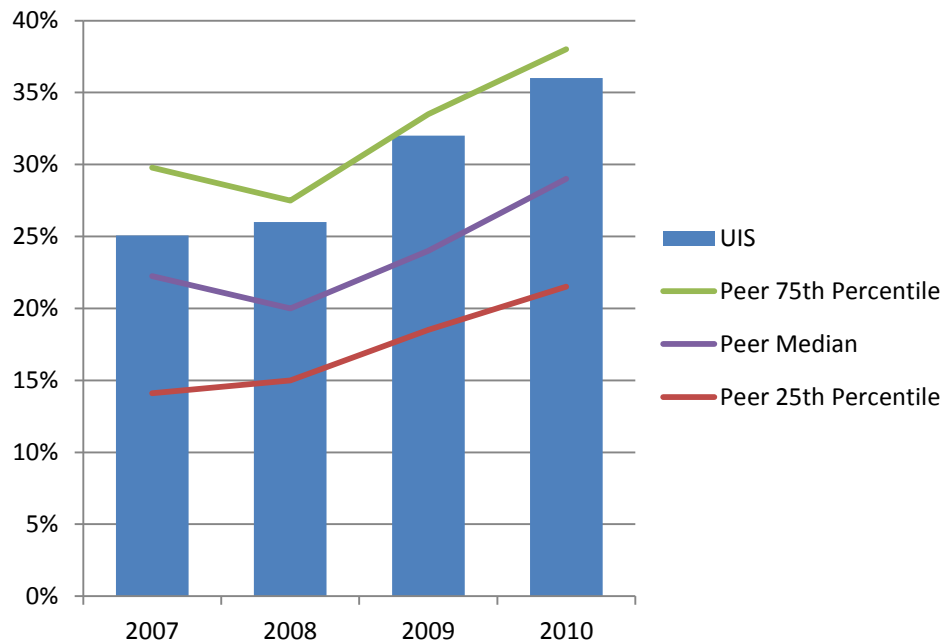
Percent Undergraduate Students Receiving Federal, State, or Local Institutional or Other Sources of Need or Merit Grant Aid: AY 2008 – AY 2010



Percent of students receiving aid at the University of Illinois at Springfield is below its peer median.

TASK: Increase financial aid and deploy financial aid as strategically as possible.

Percent Undergraduate Students Receiving Pell Grants AY 2007 – AY 2010

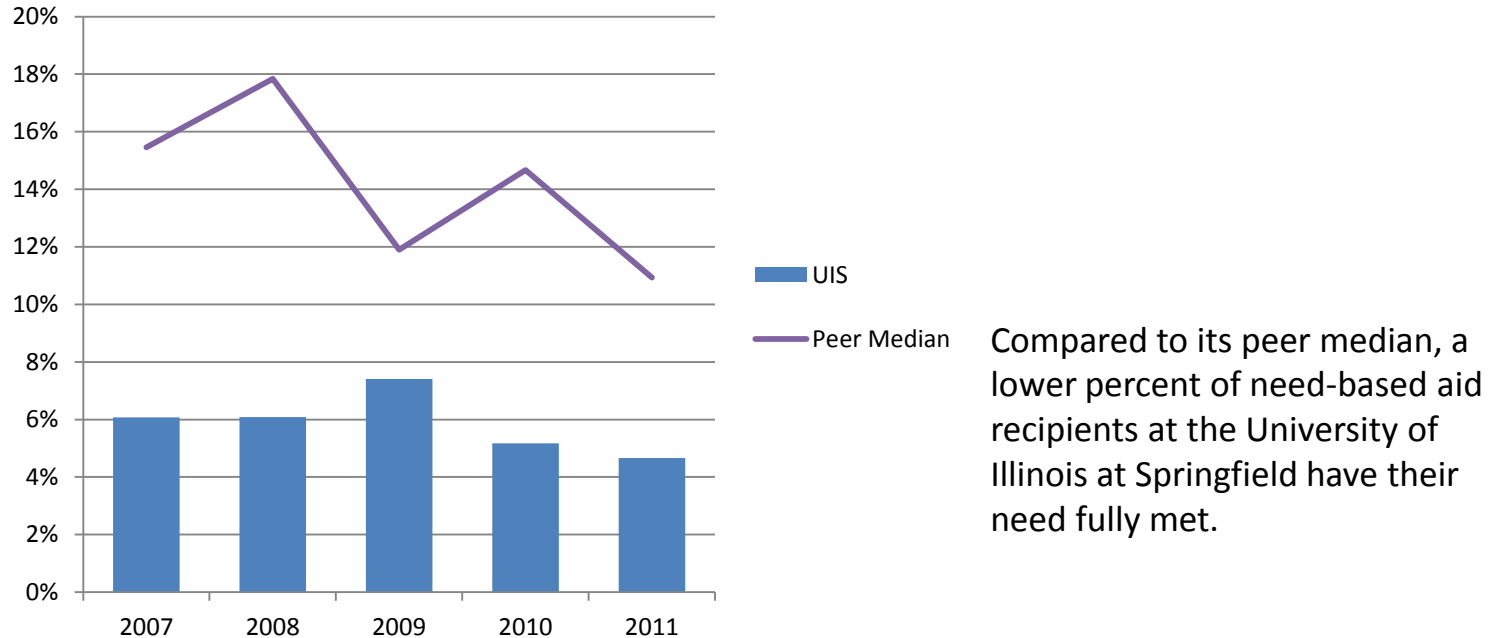


University of Illinois at Springfield has a higher percent of Pell grant recipients than its peer median.

TASK: Maintain the percent of students getting Pell grants.

Percent Full-Time Undergraduates Awarded Any Need-Based Scholarship/Grant Aid Where Need Was Fully Met: AY 2007 – AY 2011

(excludes PLUS loans, unsubsidized, and private alternative loans)

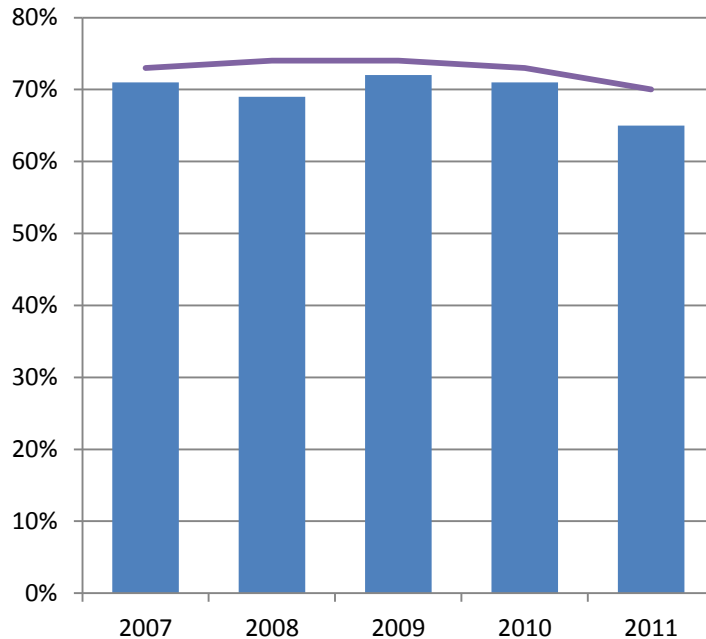


TASK: Increase scholarship support and provide more need-based aid. Encourage the state to address funding issues related to the Illinois Veteran Grants (IVG) and Illinois National Guard Grants (ING) awards so that UIS could capture \$1.3 million in additional aid for other students.

Note: Excludes Auburn University-Montgomery, Clark University, Georgia College and State University, Iona College, Lake Superior State University, and Marist College due to lack of available data.

Percent Need Met of Full-Time Undergraduates Awarded Any Need-Based Aid AY 2007 – AY 2011

(excludes any aid awarded in excess of need as well as any that were awarded to replace EFC: PLUS, unsubsidized and private alternative loans)



UIS
Peer Median

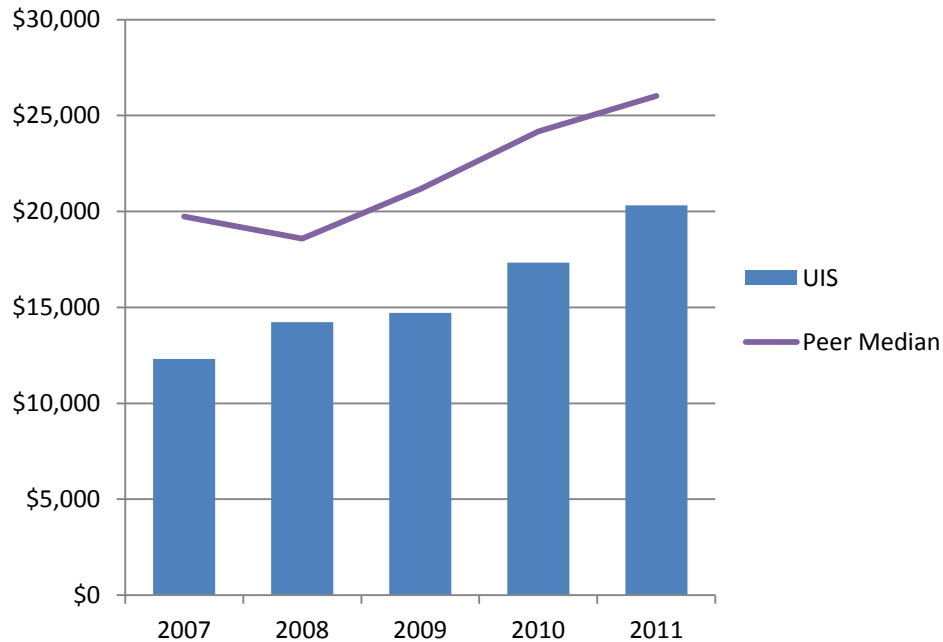
University of Illinois at Springfield students who receive need-based aid have a slightly lower percent of financial need met as their peer median.

TASK: Increase scholarship support and provide more need-based aid. Encourage the state to address funding issues related to the Illinois Veteran Grants (IVG) and Illinois National Guard Grants (ING) awards so that UIS could capture \$1.3 million in additional aid for other students.

Note: Excludes Auburn University-Montgomery, Clark University, Georgia College and State University, Iona College, Lake Superior State University, and Marist College due to lack of available data.

Average Per Undergraduate-Borrower Cumulative Principal Borrowed AY 2007 – AY 2011

(excludes any aid awarded in excess of need as well as any that were awarded to replace EFC: PLUS, unsubsidized and private alternative loans)



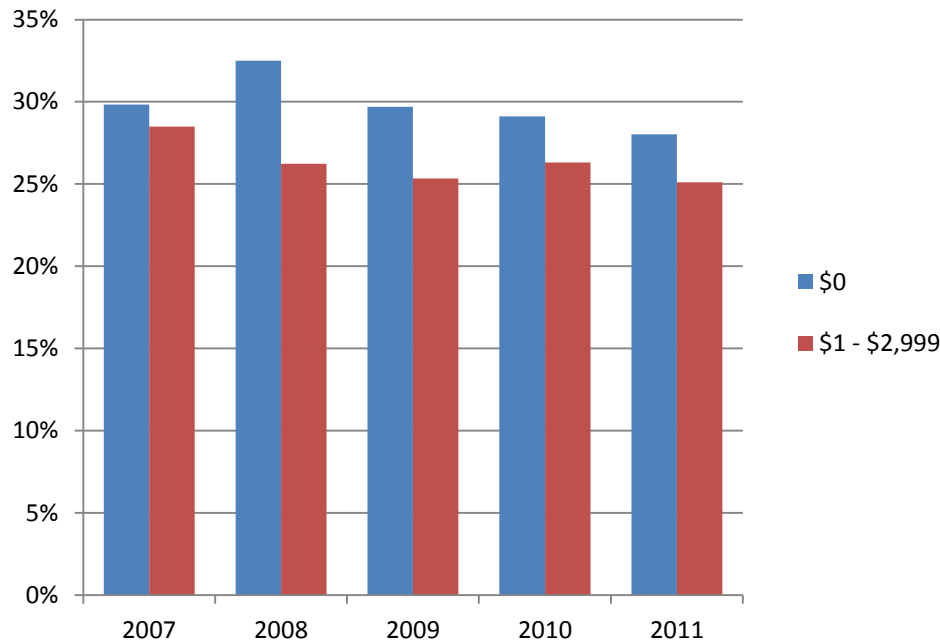
Compared to the peer median, the average debt of University of Illinois at Springfield students is lower.

TASK: Increase scholarship support and provide more need-based aid.

Note: Excludes Auburn University-Montgomery, Clark University, Georgia College and State University, Iona College, Lake Superior State University, Marist College, Trinity University, and University of South Dakota due to lack of available data.

Percent Full-Time Undergraduates Paying Less than \$3,000 Per Semester Fall 2007 – Fall 2011

(Includes all forms of financial aid and tuition waivers. Excludes loans and employment)



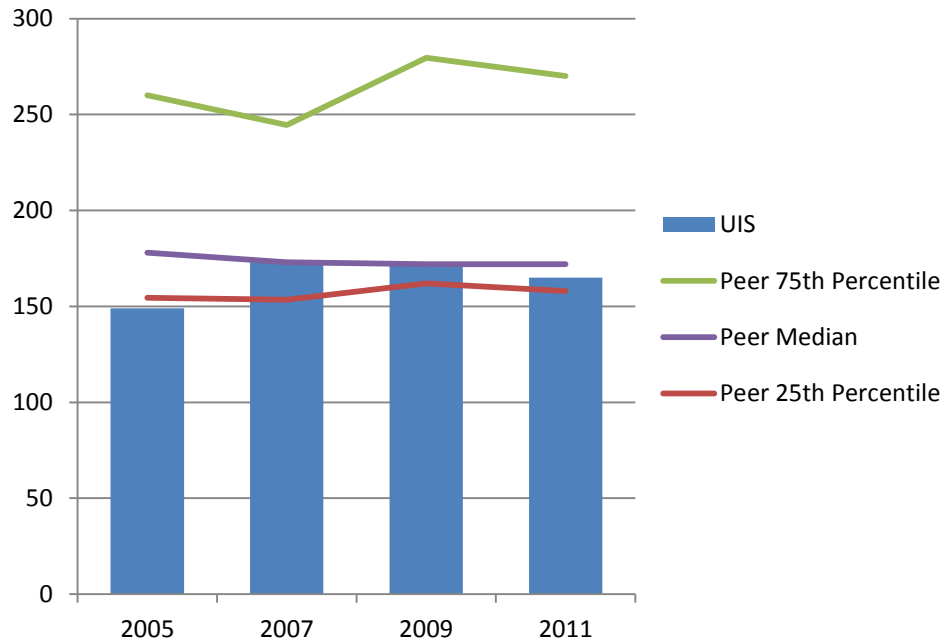
One-half of undergraduates at the University of Illinois at Springfield pay less than \$3,000 per semester for tuition.

TASK: Maintain the current level of students paying under \$3,000 per semester.

Faculty



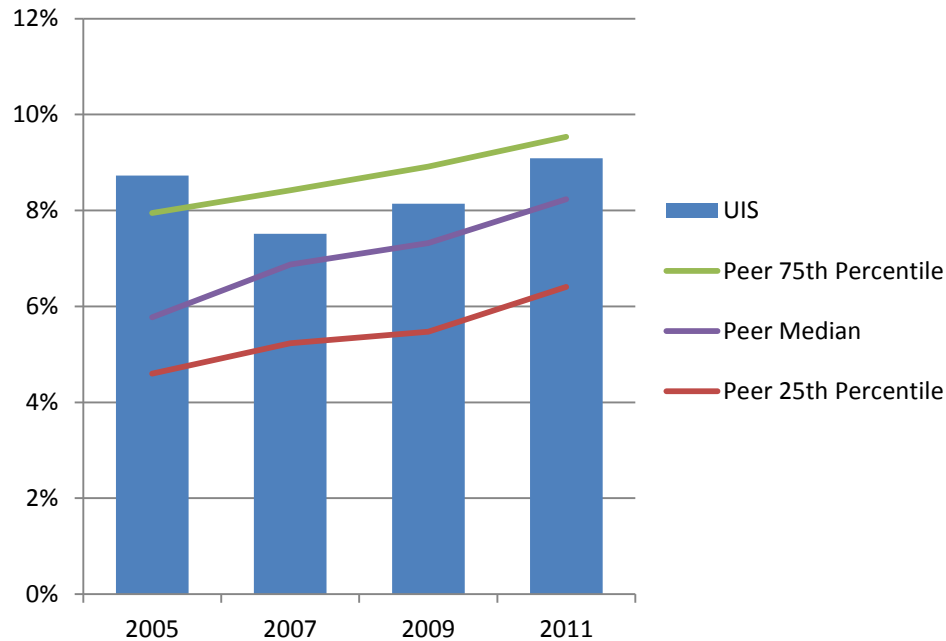
Number of Tenure System Faculty Selected Fall Terms



Except for 2005, the number of tenure system faculty at the University of Illinois at Springfield is on par with its peer median.

TASK: Add academic programs in high-demand areas and increase enrollment so that the number of tenure-system faculty can be increased.

Percent Tenure System Faculty from Underrepresented* Groups Selected Fall Terms

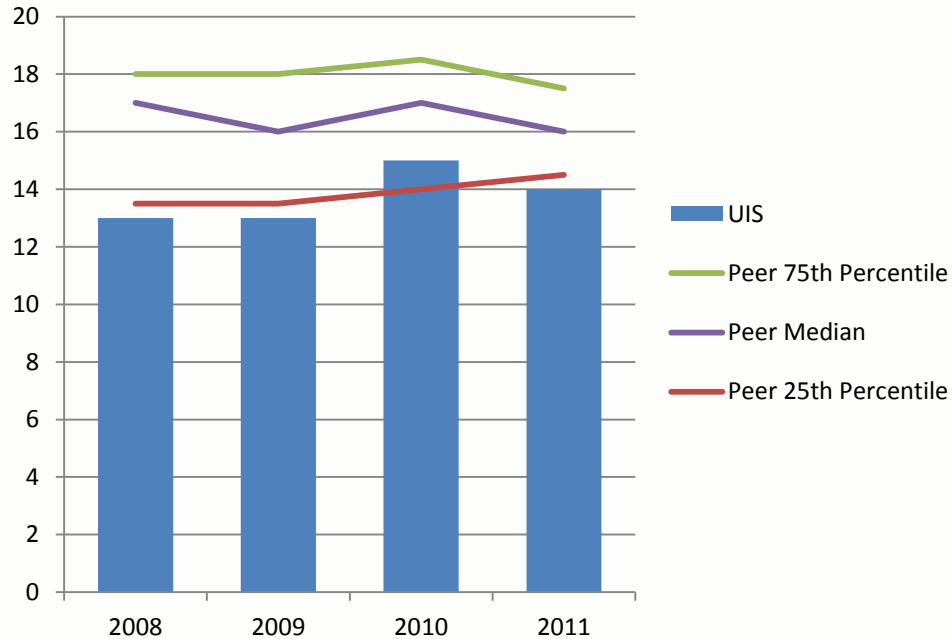


University of Illinois at Springfield has a higher percent of tenure system faculty from underrepresented groups than its peer median.

TASK: Complete Affirmative Action Plan to track faculty hires at the department and college levels and recruit minority faculty members with more assertive outreach.

* Includes Black, Hispanic, American Indian, Native Hawaiian/Other Pacific Islander, and multi-racial faculty.

Student to Faculty Ratios Fall 2008 – Fall 2011



University of Illinois at Springfield has a lower student to faculty ratio than its peer median.

TASK: Monitor class section sizes and make adjustments to maximize use of faculty resources.

Percent Undergraduate Class Sections with Fewer Than 20 Students Fall 2007 – Fall 2011



The percent of classes with fewer than 20 students at the University of Illinois at Springfield is higher than its peer median.

TASK: Monitor class section sizes and assess opportunities for economies of scale while preserving the quality of the UIS educational experience for students.

Note: Excludes Clark University, Georgia College and State University, Iona College, Marist College, and Lake Superior State University due to lack of available data.

Percent Undergraduate Class Sections with More Than 50 Students Fall 2007 – Fall 2011

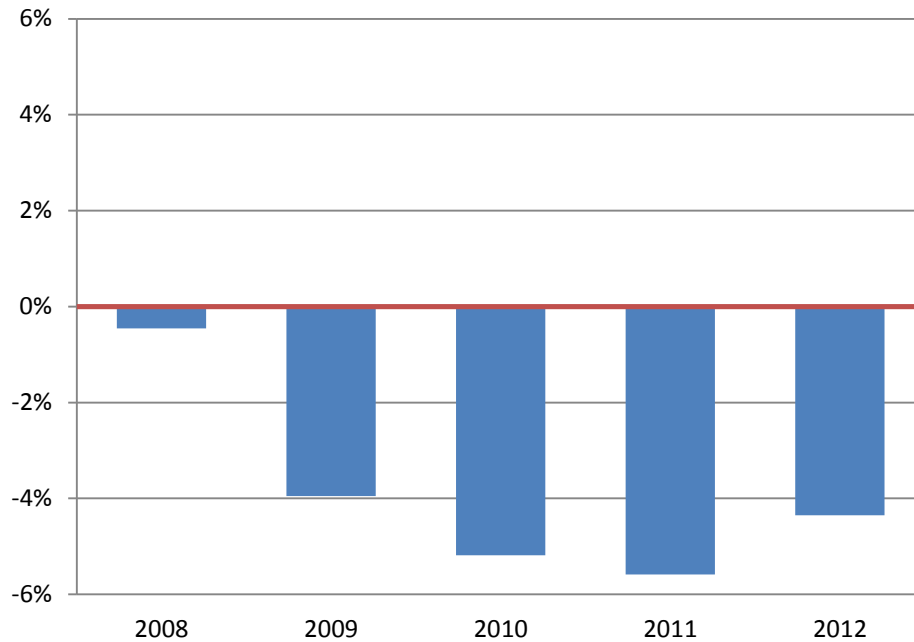


The percent of classes with more than 50 students at the University of Illinois at Springfield is less than its peer median.

TASK: Monitor class section sizes and assess opportunities for economies of scale while preserving the quality of the UIS educational experience for students.

Note: Excludes Clark University, Georgia College and State University, Iona College, Marist College, and Lake Superior State University due to lack of available data.

Faculty* Salary - Difference from Peer Median FY 2008 – FY 2012



Average faculty salary at the University of Illinois at Springfield is lower than its peer median.

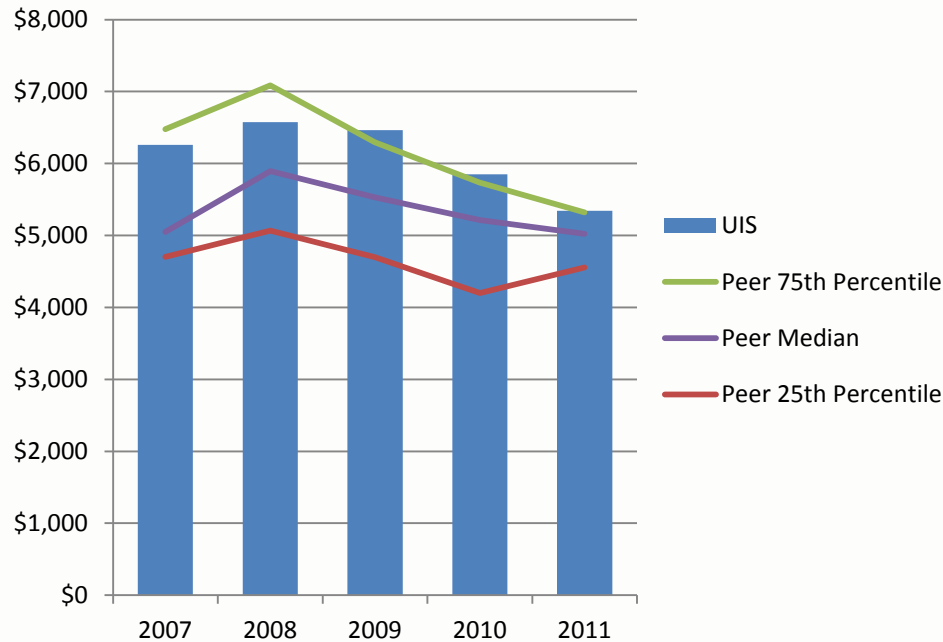
TASK: Develop a plan to increase average faculty salaries.

* Includes full-time "Instructional" faculty and excludes clinical faculty.

Financial Indicators



State Appropriations per FTE Enrollment FY 2007 – FY 2011

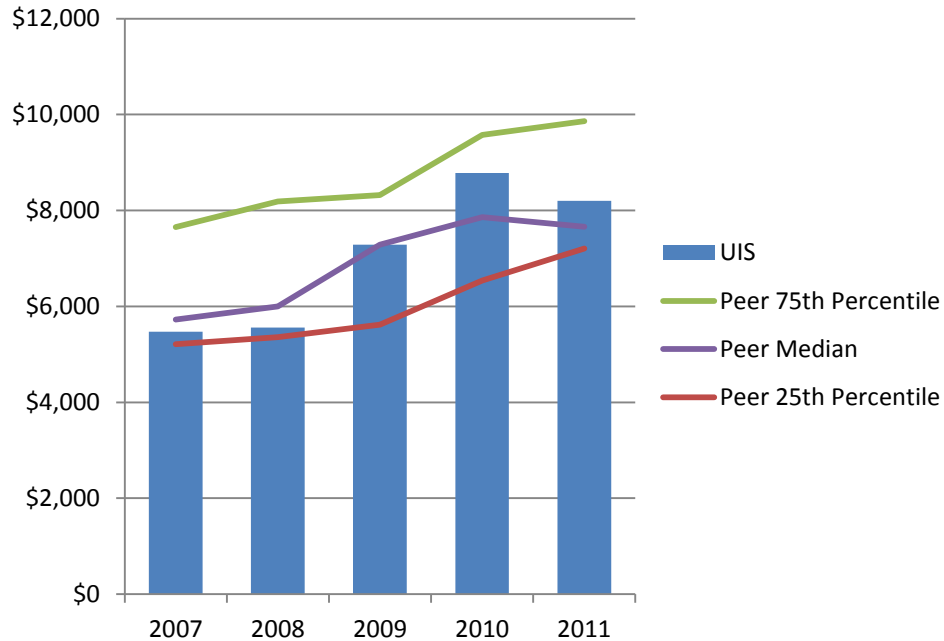


University of Illinois at Springfield receives more state support per student than the median amount for its public university peers.

TASK: Work with UI Government Relations, UIS student groups, and the Illinois Connection to advocate for state support of public universities in Illinois.

Note: Does not include any allocation of University Administration expenses.

Instructional Expenses per FTE Enrollment FY 2007 – FY 2011



Instructional expenses per student at the University of Illinois at Springfield is higher than its peer median.

TASK: Monitor class sizes and student-to-faculty ratios, increase enrollment and continue implementation of cost-control measures.

Note: Does not include any allocation of University Administration expenses.
Increase in FY09 is related to benefit payments being spread by function.

Advancement Peer Groups



University of Illinois at Springfield

Georgia College and State University - Milledgeville

Northern Michigan University - Marquette

Ramapo College of New Jersey

Sonoma State University

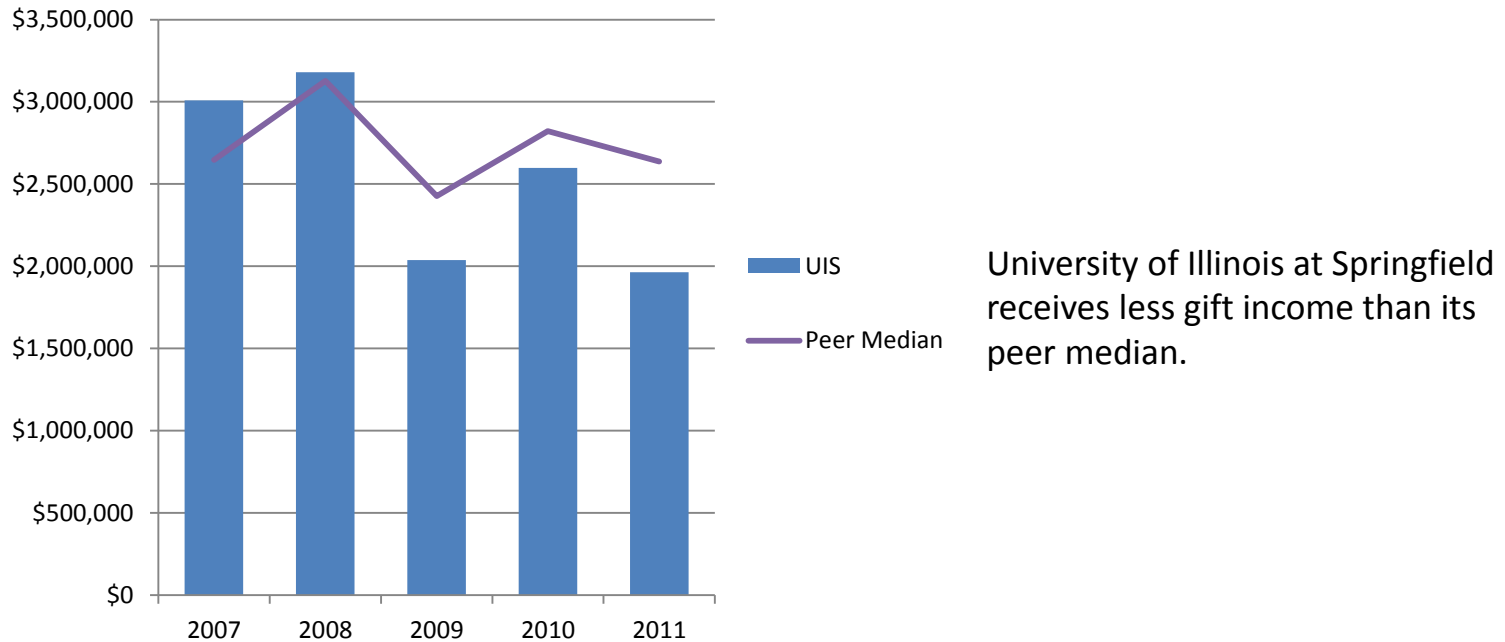
State University of New York - Geneseo

Truman State University

University of Texas - Tyler

Note: All institutions are public.

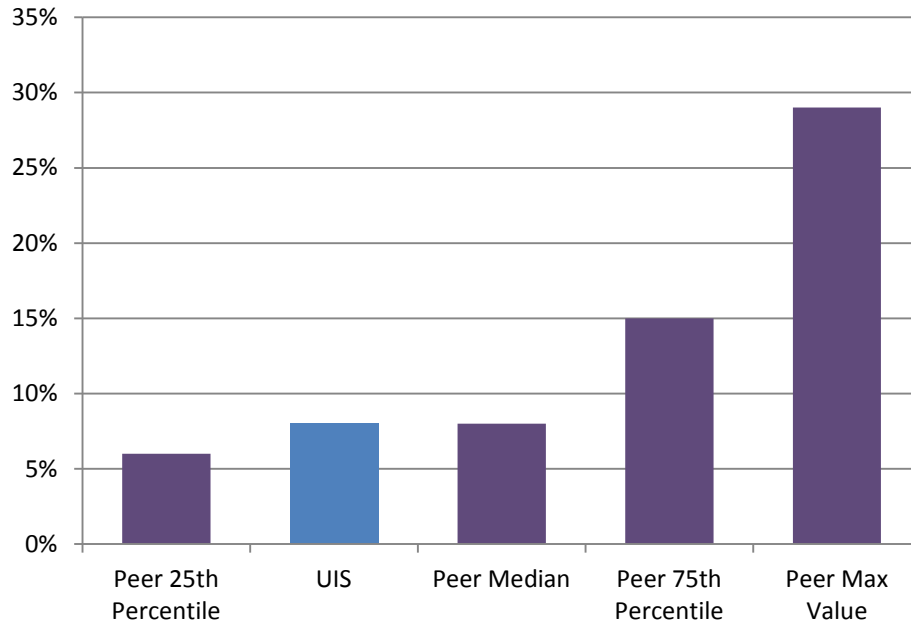
Gift Income – Total Gifts FY 2007 – FY 2011



TASK: Strengthen the UIS Development and Alumni operations and employ best practices in advancement; raise expectations among administrators for fundraising results.

Note: UI Advancement Peer Group.

Annual Giving Rate by Alumni AY 2009 – AY 2010

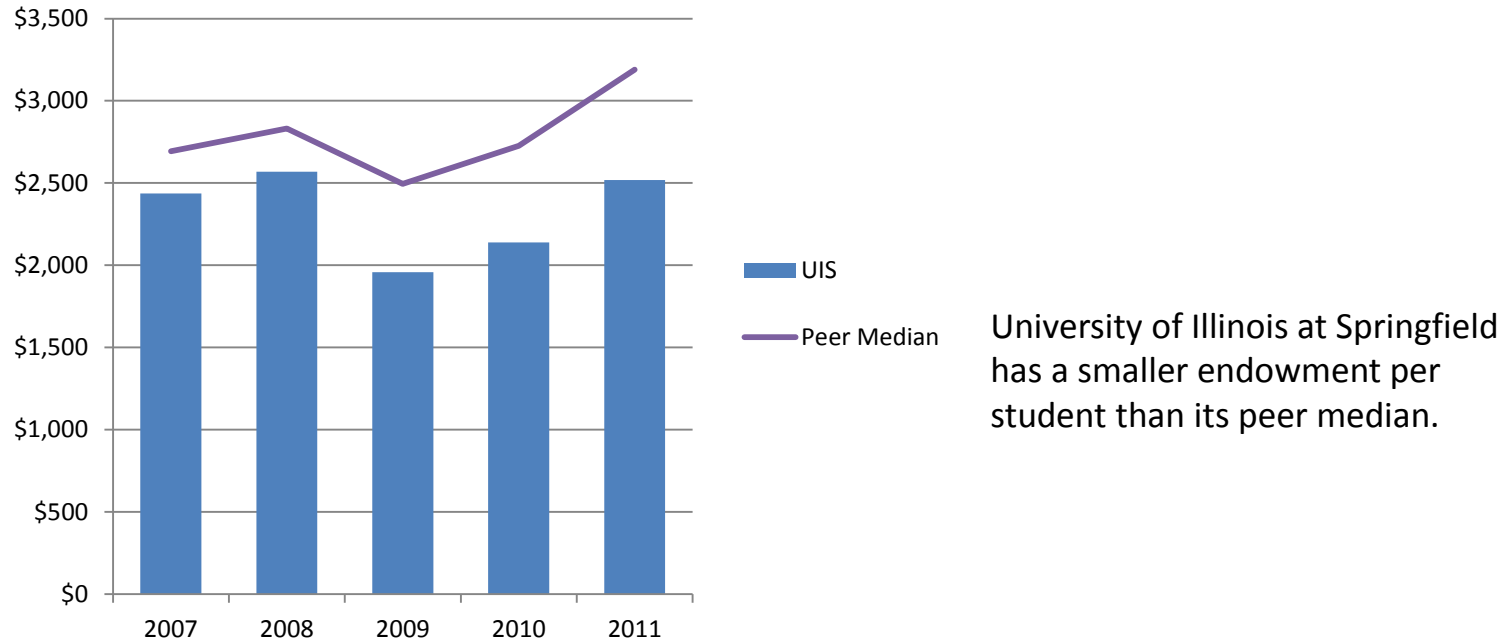


University of Illinois at Springfield has a similar percent of its alumni donating money than the peer median.

TASK: Integrate Alumni operations more effectively with Development to create an advancement model that will increase the annual giving rate by alumni.

Note: Peer data from US News & World Report, 2013 Edition. Annual giving rate is a two year average.

Endowment Assets per FTE Enrollment FY 2007 – FY 2011



TASK: Strengthen the UIS Development and Alumni operations and employ best practices in advancement; raise expectations among administrators for fundraising results.

Note: UI Advancement Peer Group, which is different from the primary formal peer group.