

# **University of Illinois at Urbana-Champaign**

## **Dashboard Indicators**

**PREPARED BY:  
UNIVERSITY OFFICE FOR PLANNING AND BUDGETING  
SEPTEMBER 12, 2012**

**PRESENTED BY:  
CHANCELLOR PHYLLIS WISE  
SEPTEMBER 14, 2012**

# Student Access, Enrollment and Outcomes



# University of Illinois at Urbana-Champaign and Peer Institutions Fall Term Enrollment

## Fall 2006 – Fall 2010

| Institution                                       | All Student Total |               |               |               |               | Undergraduate |               |               |               |               | Graduate and Professional |               |               |               |               |
|---|-------------------|---------------|---------------|---------------|---------------|---------------|---------------|---------------|---------------|---------------|---------------------------|---------------|---------------|---------------|---------------|
|   | 2006              | 2007          | 2008          | 2009          | 2010          | 2006          | 2007          | 2008          | 2009          | 2010          | 2006                      | 2007          | 2008          | 2009          | 2010          |
| <b>University of Illinois at Urbana-Champaign</b> | <b>42,738</b>     | <b>42,326</b> | <b>43,246</b> | <b>43,881</b> | <b>43,862</b> | <b>31,472</b> | <b>30,895</b> | <b>31,417</b> | <b>31,477</b> | <b>31,540</b> | <b>11,266</b>             | <b>11,431</b> | <b>11,829</b> | <b>12,404</b> | <b>12,322</b> |
| University of California - Berkeley               | 33,920            | 34,940        | 35,396        | 35,830        | 35,833        | 23,863        | 24,636        | 25,151        | 25,530        | 25,540        | 10,057                    | 10,304        | 10,245        | 10,300        | 10,293        |
| University of California - Los Angeles            | 36,611            | 37,476        | 38,220        | 38,550        | 38,157        | 25,432        | 25,928        | 26,536        | 26,687        | 26,162        | 11,179                    | 11,548        | 11,684        | 11,863        | 11,995        |
| University of California - San Diego              | 26,247            | 27,020        | 27,520        | 28,418        | 29,176        | 21,369        | 22,048        | 22,518        | 23,143        | 23,663        | 4,878                     | 4,972         | 5,002         | 5,275         | 5,513         |
| University of Michigan - Ann Arbor                | 40,025            | 41,042        | 41,028        | 41,674        | 41,924        | 25,555        | 26,083        | 25,994        | 26,208        | 27,027        | 14,470                    | 14,959        | 15,034        | 15,466        | 14,897        |
| University of North Carolina - Chapel Hill        | 27,717            | 28,136        | 28,567        | 28,916        | 29,390        | 17,124        | 17,628        | 17,895        | 17,981        | 18,579        | 10,593                    | 10,508        | 10,672        | 10,935        | 10,811        |
| University of Texas - Austin                      | 49,697            | 50,170        | 49,984        | 50,995        | 51,195        | 37,037        | 37,459        | 37,389        | 38,168        | 38,420        | 12,660                    | 12,711        | 12,595        | 12,827        | 12,775        |
| University of Washington                          | 39,524            | 40,218        | 39,675        | 45,943        | 42,451        | 27,836        | 28,570        | 29,397        | 32,718        | 29,307        | 11,688                    | 11,648        | 10,278        | 13,225        | 13,144        |
| University of Wisconsin - Madison                 | 41,028            | 41,563        | 41,620        | 41,654        | 42,180        | 29,639        | 30,166        | 30,362        | 29,925        | 30,170        | 11,389                    | 11,397        | 11,258        | 11,729        | 12,010        |
| University of Virginia                            | 24,068            | 24,257        | 24,541        | 24,355        | 24,391        | 14,676        | 15,078        | 15,208        | 15,476        | 15,595        | 9,392                     | 9,179         | 9,333         | 8,879         | 8,796         |

Data Source: IPEDS Data Center. Includes on- and off-campus enrollments.

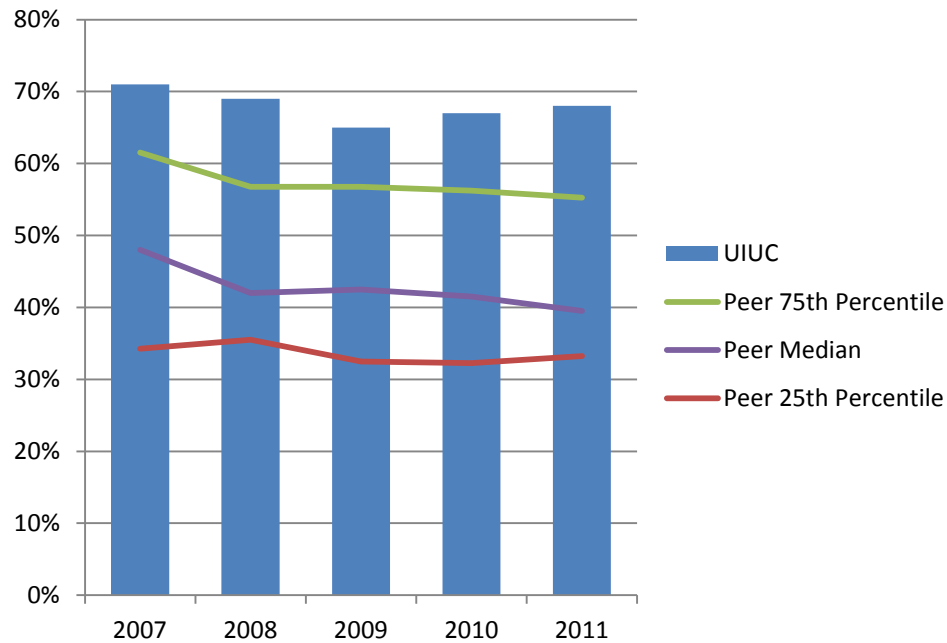
## University of Illinois at Urbana-Champaign and Peer Institutions First-Time Freshmen Enrollment Fall 2006 – Fall 2010

|   | <u>2006</u>  | <u>2007</u>  | <u>2008</u>  | <u>2009</u>  | <u>2010</u>  |
|---|--------------|--------------|--------------|--------------|--------------|
| <b>University of Illinois at Urbana-Champaign</b> | <b>7,172</b> | <b>6,940</b> | <b>7,287</b> | <b>6,984</b> | <b>6,929</b> |
| University of California - Berkeley               | 4,157        | 4,225        | 4,261        | 4,356        | 4,109        |
| University of California - Los Angeles            | 4,810        | 4,563        | 4,735        | 4,472        | 4,636        |
| University of California - San Diego              | 4,589        | 4,141        | 4,292        | 3,749        | 3,949        |
| University of Michigan - Ann Arbor                | 5,399        | 5,992        | 5,783        | 6,079        | 6,496        |
| University of North Carolina - Chapel Hill        | 3,807        | 3,893        | 3,865        | 3,960        | 3,960        |
| The University of Texas - Austin                  | 7,417        | 7,479        | 6,718        | 7,243        | 7,275        |
| University of Washington                          | 5,475        | 5,325        | 5,579        | 6,184        | 5,502        |
| University of Wisconsin-Madison                   | 5,643        | 5,994        | 5,773        | 5,680        | 5,927        |
| University of Virginia                            | 3,091        | 3,248        | 3,256        | 3,246        | 3,243        |

Data Source: IPEDS Data Center.

# Percent First-Time Freshmen Applicants Admitted\*

## Fall 2007 – Fall 2011

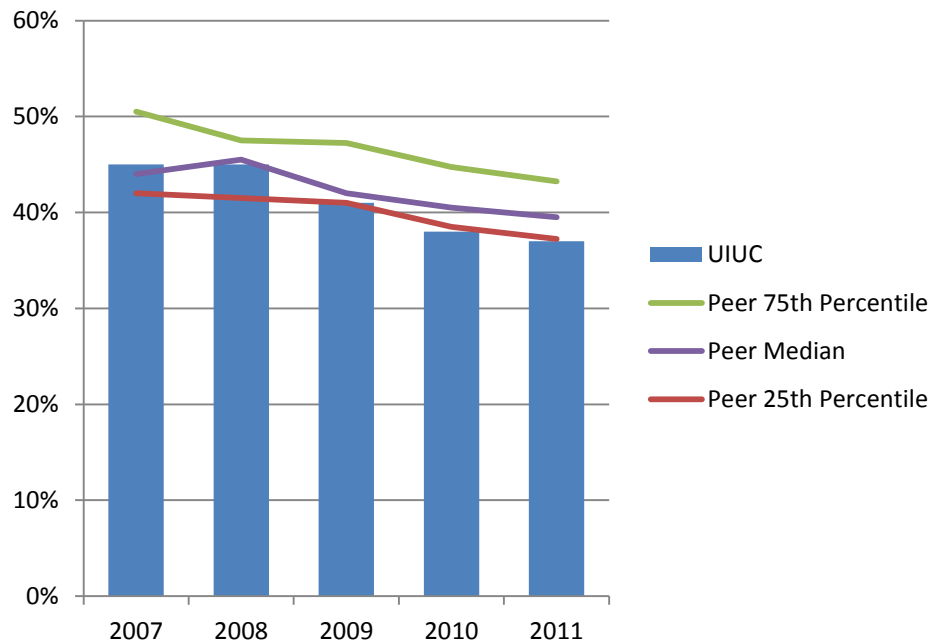


University of Illinois at Urbana-Champaign admits a higher percent of freshman applicants compared to the peer median.

\* Percent Admitted = Percent of (total admits divided by total applicants).

# Percent First-Time Freshmen Admissions Yield\*

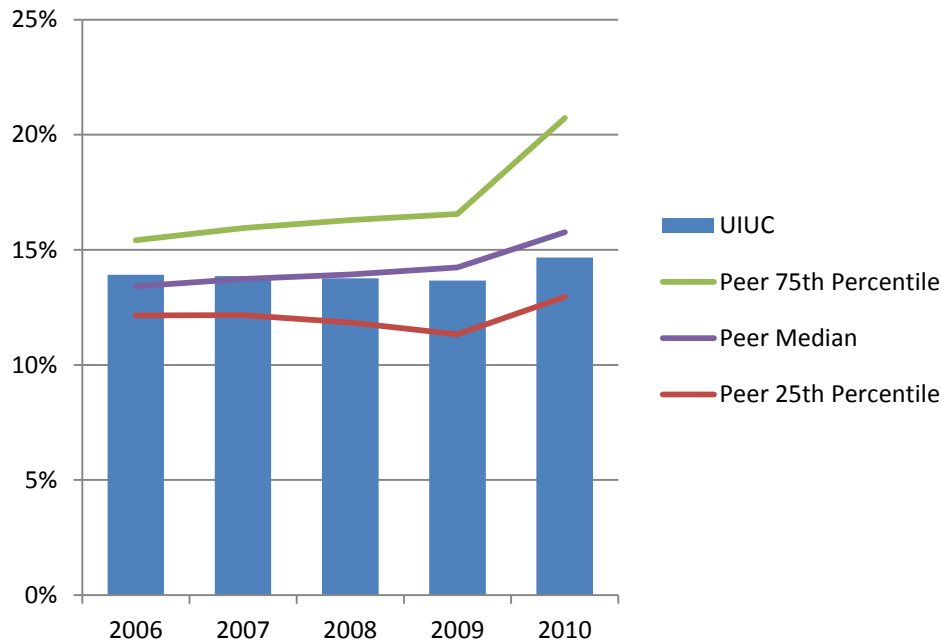
## Fall 2007 – Fall 2011



Admissions yield at the University of Illinois at Urbana-Champaign has fallen below the peer median.

\* Admissions Yield = Percent of (total enrolled divided by total admits).

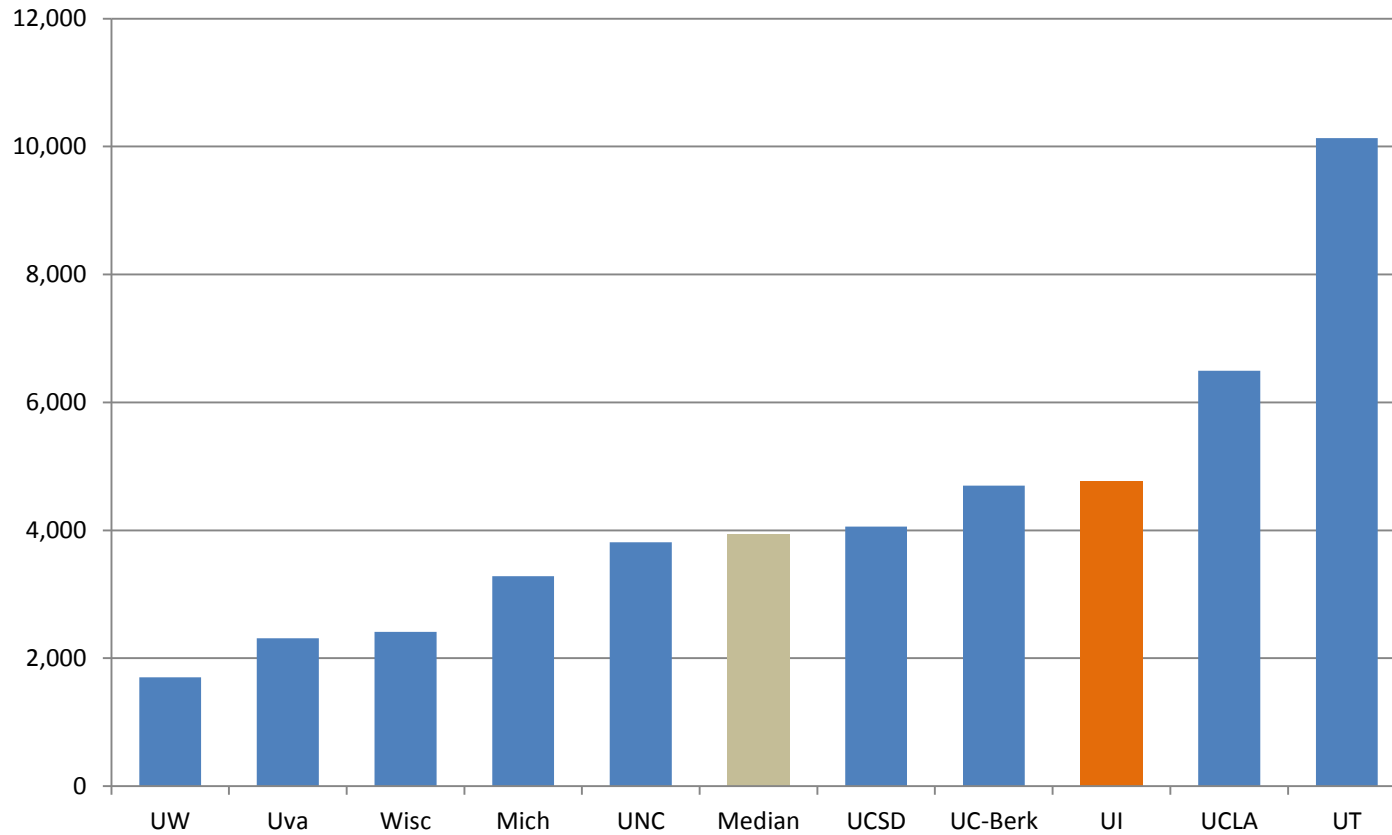
# Percent Enrolled Undergraduate Students from Underrepresented\* Groups Fall 2006 – Fall 2010



The percent of undergraduate students from underrepresented groups at the University of Illinois at Urbana-Champaign is about the same as the peer median.

\* Includes Black, Hispanic, American Indian, Native Hawaiian/Other Pacific Islander, and multi-racial students.

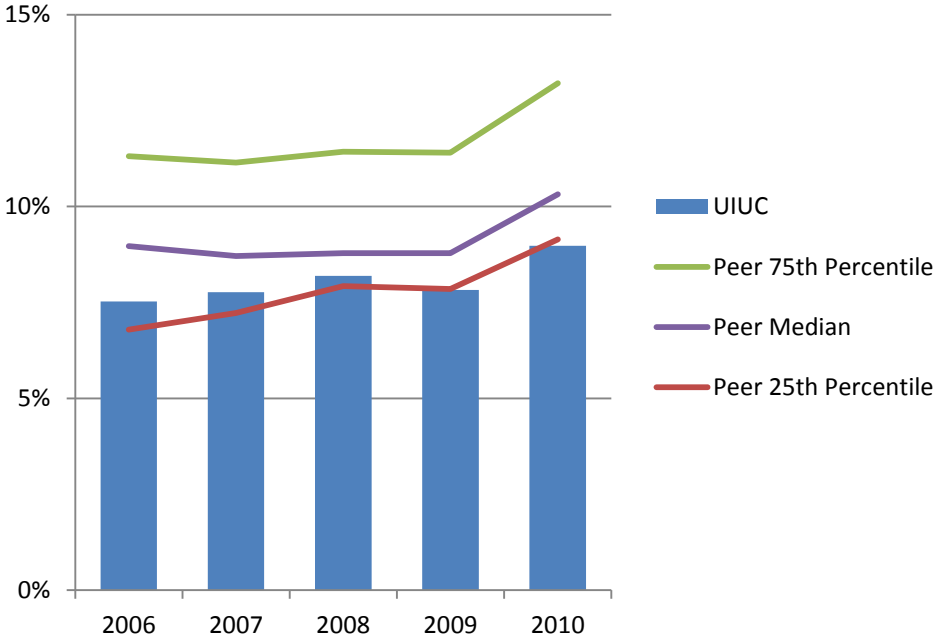
# Enrolled Undergraduate Students from Underrepresented\* Groups Fall 2011



\* Includes Black, Hispanic, American Indian, Native Hawaiian/Other Pacific Islander, and multi-racial students.



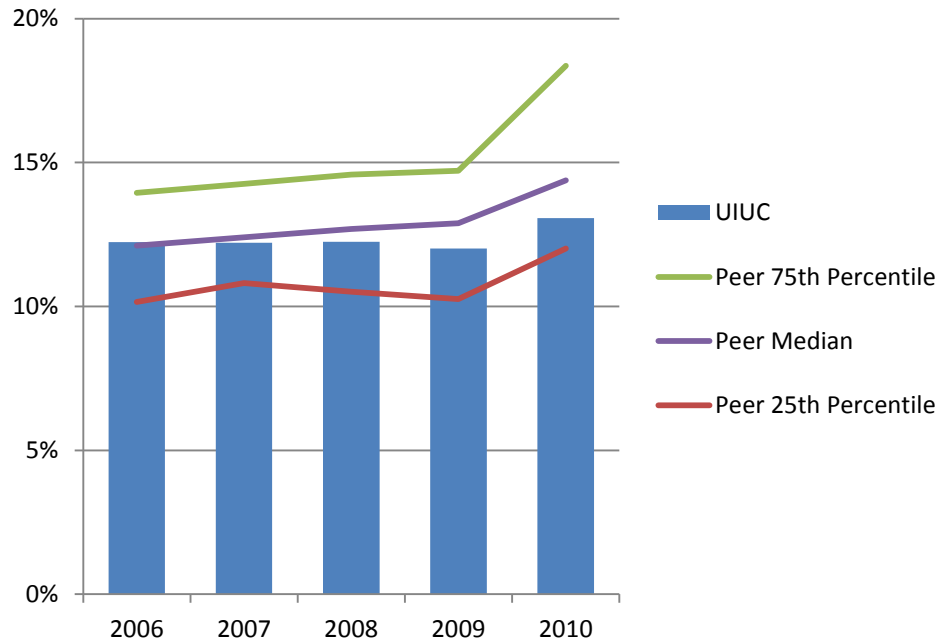
# Percent Enrolled Graduate and Professional Students from Underrepresented\* Groups Fall 2006 – Fall 2010



The percent of graduate and professional students from underrepresented groups at the University of Illinois at Urbana-Champaign is lower than the peer median.

\* Includes Black, Hispanic, American Indian, Native Hawaiian/Other Pacific Islander, and multi-racial students.

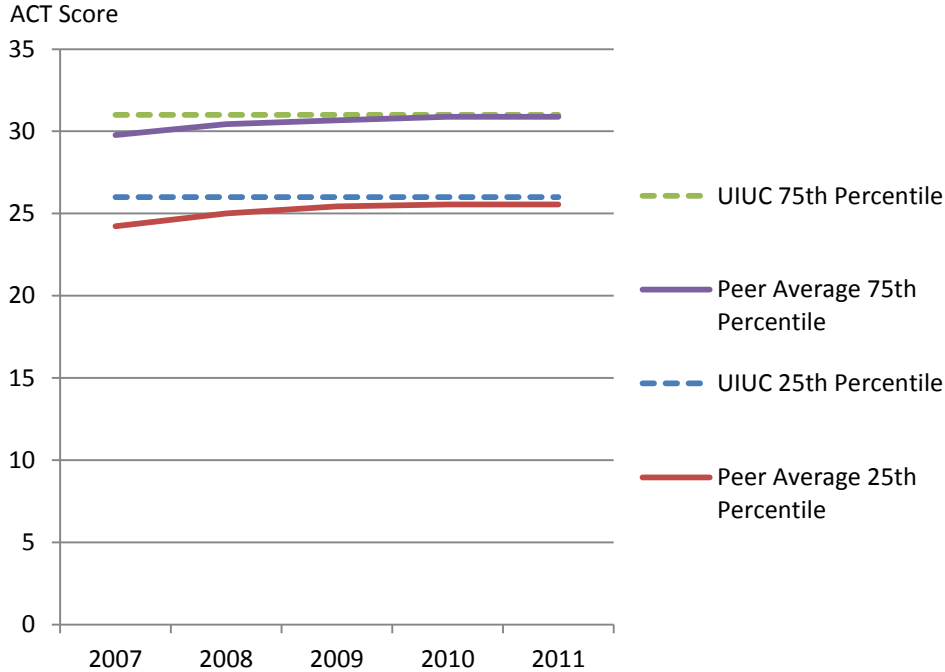
# Percent All Enrolled Students from Underrepresented\* Groups Fall 2006 – Fall 2010



The percent of total students from underrepresented groups at the University of Illinois at Urbana-Champaign is lower than the peer median.

\* Includes Black, Hispanic, American Indian, Native Hawaiian/Other Pacific Islander, and multi-racial students.

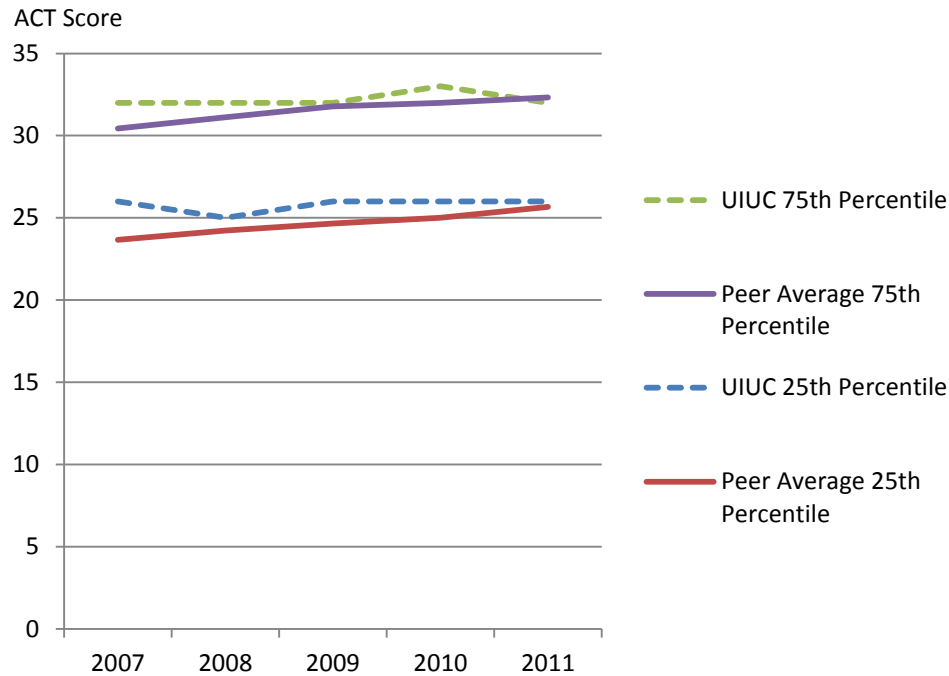
# Entering Freshmen ACT Composite Scores 25<sup>th</sup> and 75<sup>th</sup> Percentile Fall 2007 – Fall 2011



ACT scores of incoming freshmen at the University of Illinois at Urbana-Champaign are on par with peers.

Note: Fewer students at peer institutions submit ACT scores.

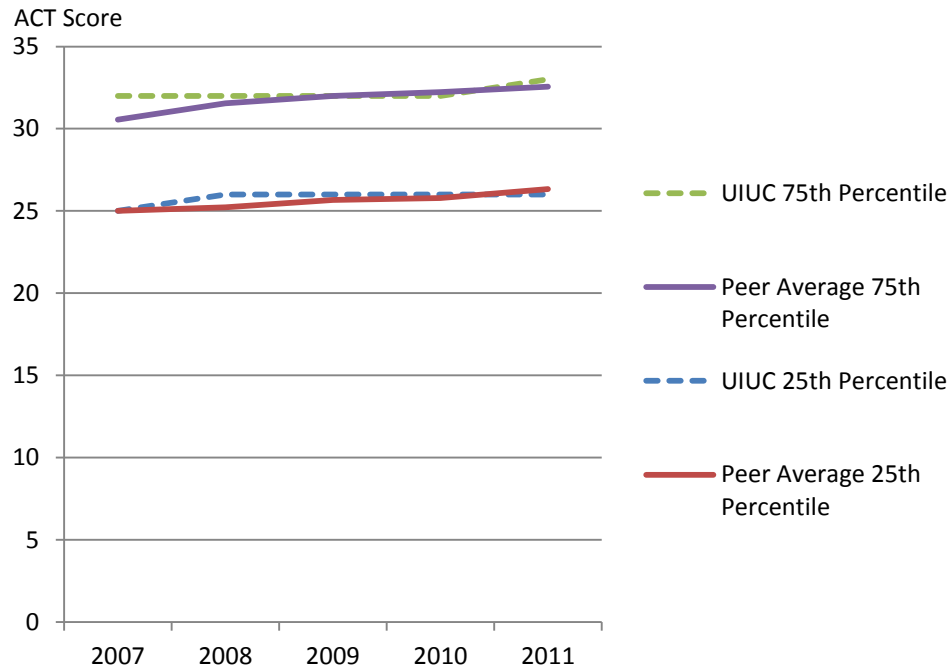
# Entering Freshmen ACT English Score 25<sup>th</sup> and 75<sup>th</sup> Percentile Fall 2007 – Fall 2011



ACT English scores of incoming freshmen at the University of Illinois at Urbana-Champaign are on par with peers.

Note: Fewer students at peer institutions submit ACT scores.

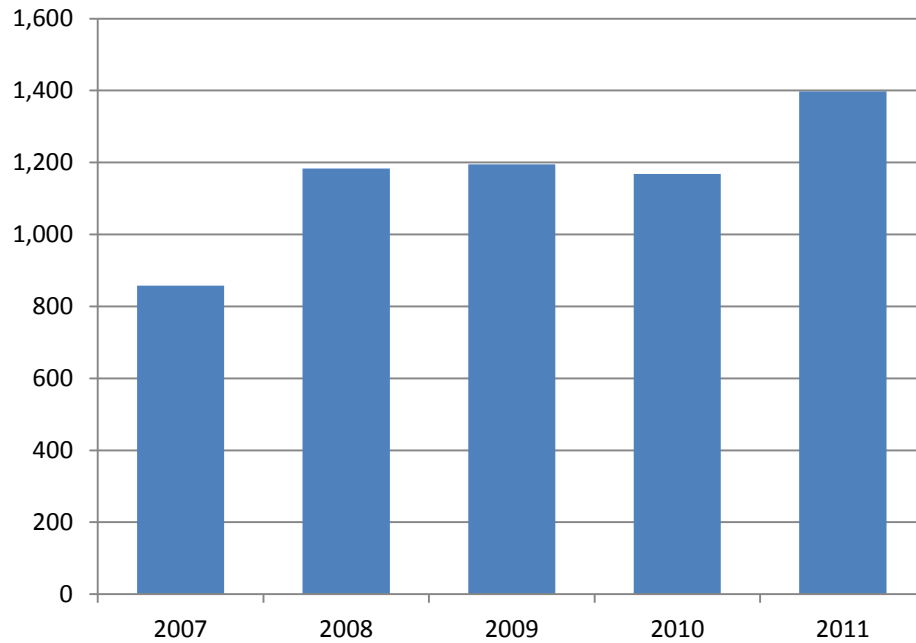
# Entering Freshmen ACT Math Score 25<sup>th</sup> and 75<sup>th</sup> Percentile Fall 2007 – Fall 2011



ACT Math scores of entering freshmen at the University of Illinois at Urbana-Champaign are on par with peers.

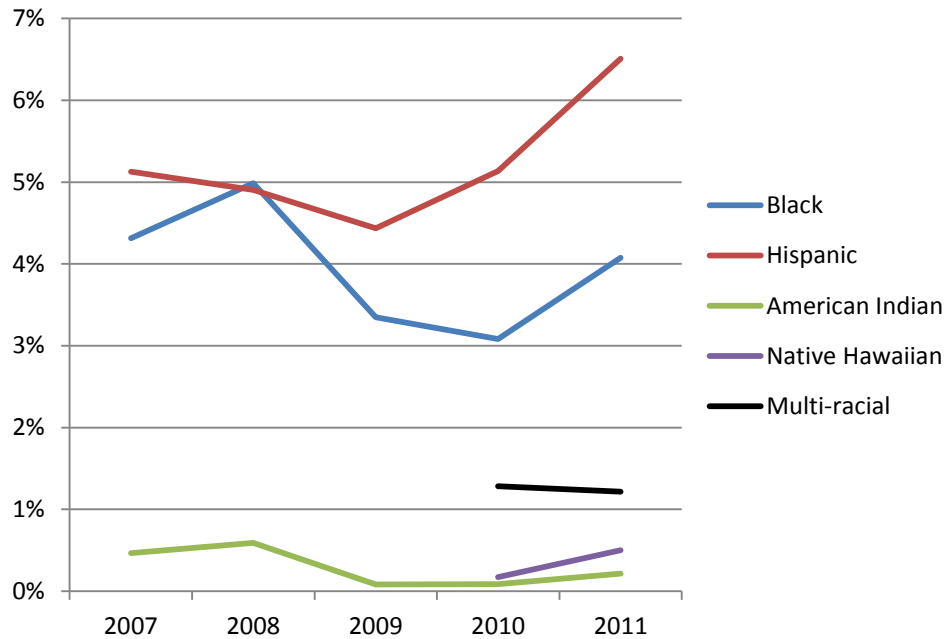
Note: Fewer students at peer institutions submit ACT scores.

# Number of Enrolled First-Time Transfers Fall 2007 – Fall 2011



The number of enrolled first-time transfers at the University of Illinois at Urbana-Champaign has reached all time high in Fall 2011.

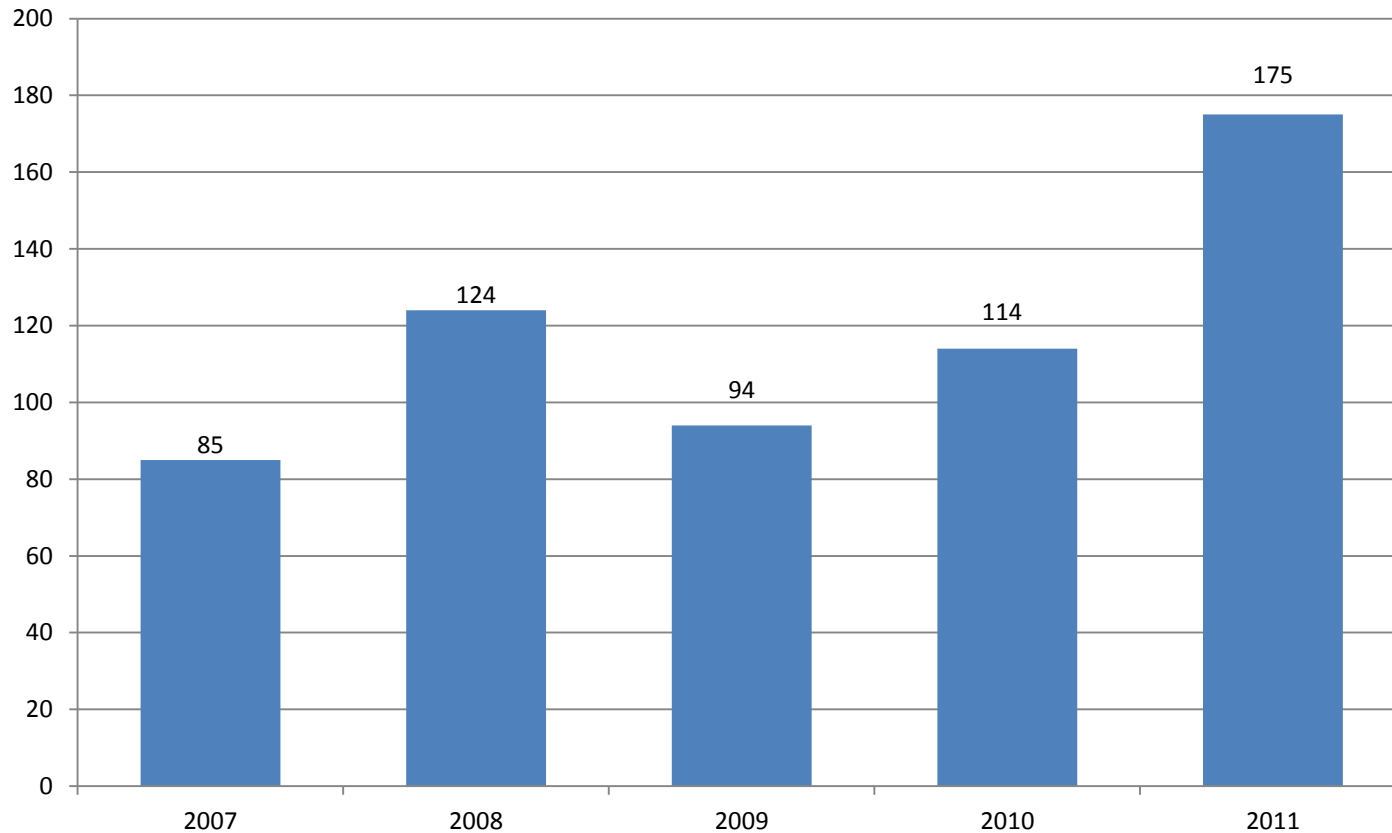
# Percent First-Time Transfers from Underrepresented\* Groups Fall 2007 – Fall 2011



About 13% of the first-time transfers at the University of Illinois at Urbana-Champaign are from an underrepresented group.

\* Includes Black, Hispanic, American Indian, Native Hawaiian/Other Pacific Islander, and multi-racial students.

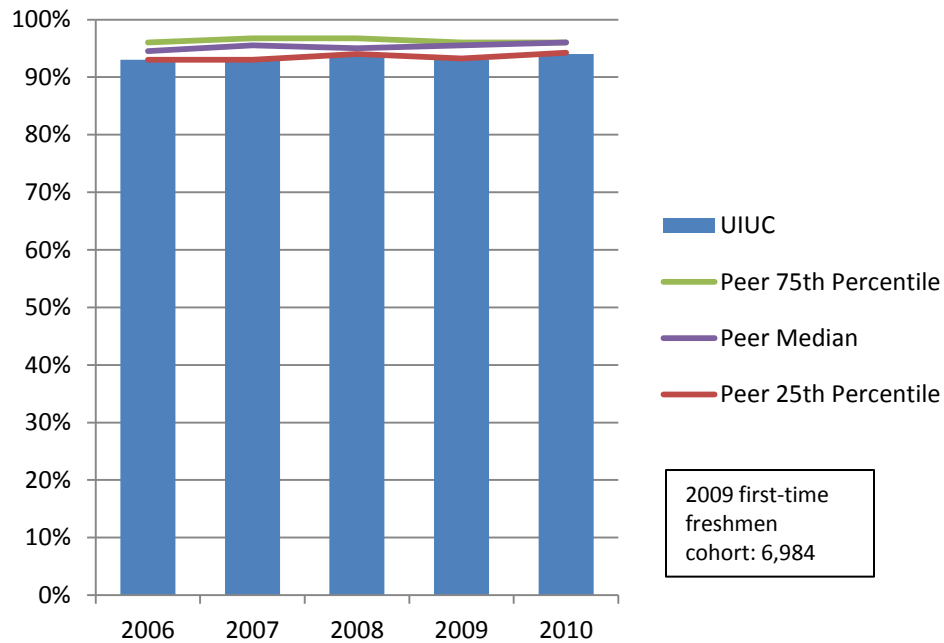
# Number of First-Time Transfers from Underrepresented\* Groups Fall 2007 – Fall 2011



\* Includes Black, Hispanic, American Indian, Native Hawaiian/Other Pacific Islander, and multi-racial students.

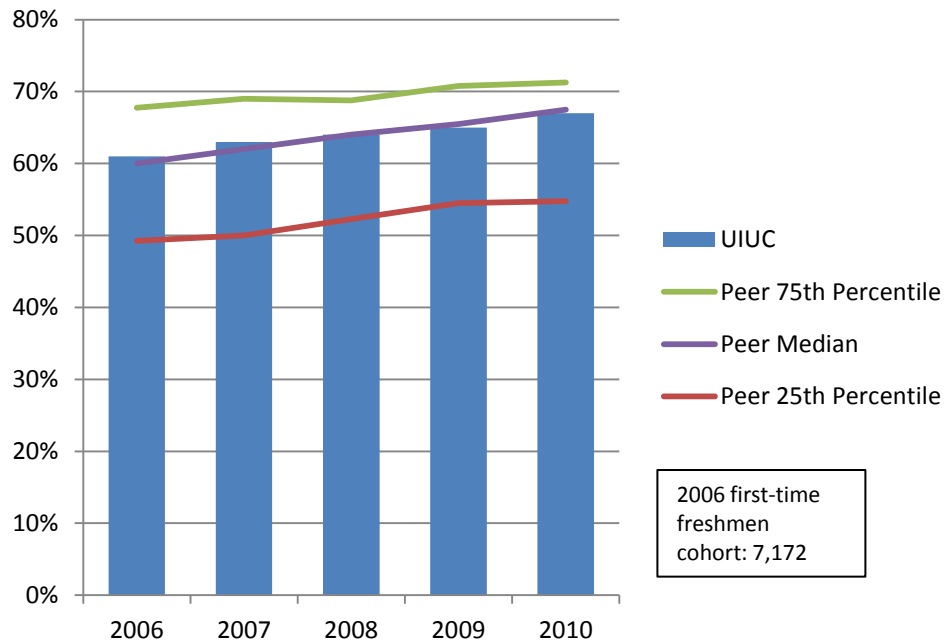


# Freshman to Sophomore One-Year Retention Rates Fall 2006 – Fall 2010



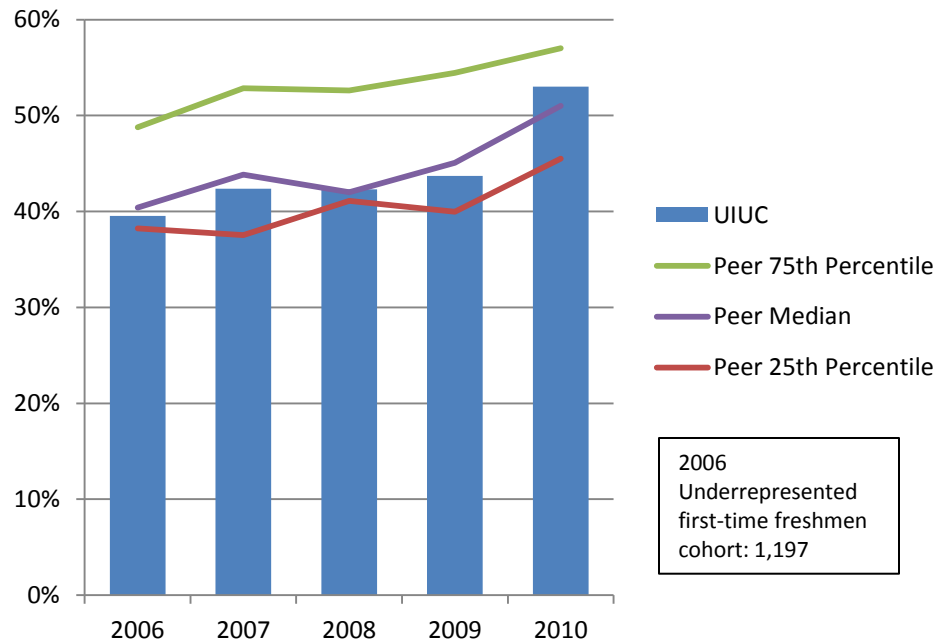
The freshmen retention rate at the University of Illinois at Urbana-Champaign is high and similar to its peers.

# First-Time Freshmen Four-Year Graduation Rates Fall 2006 – Fall 2010



The four year graduation rate for undergraduates at the University of Illinois at Urbana-Champaign is similar to the peer median.

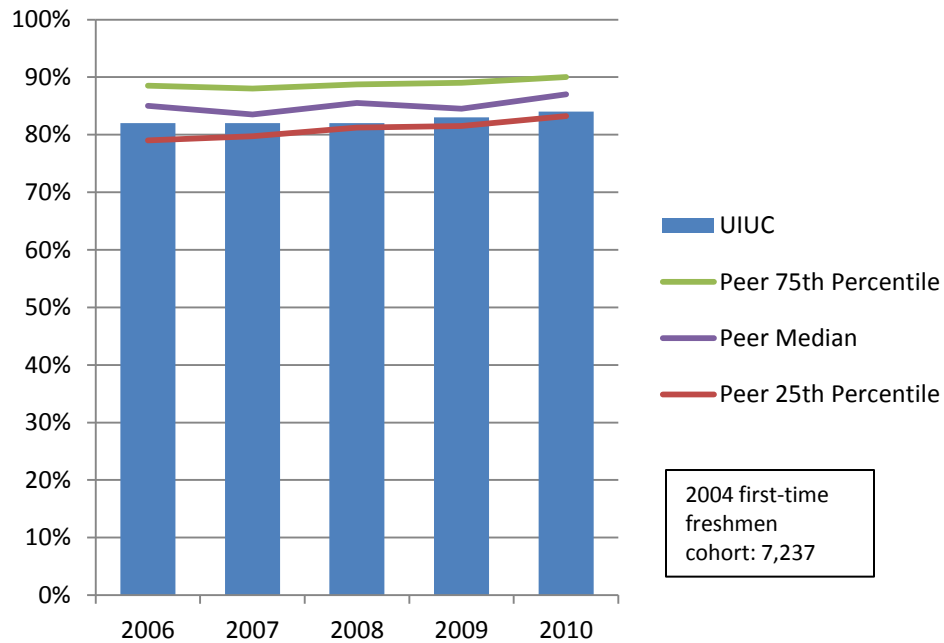
# Percent First-Time Freshmen from Underrepresented\* Groups Four-Year Graduation Rates Fall 2006 – Fall 2010



In 2010 the University of Illinois at Urbana-Champaign graduated a higher percent of students from underrepresented groups within four years compared to its peer median.

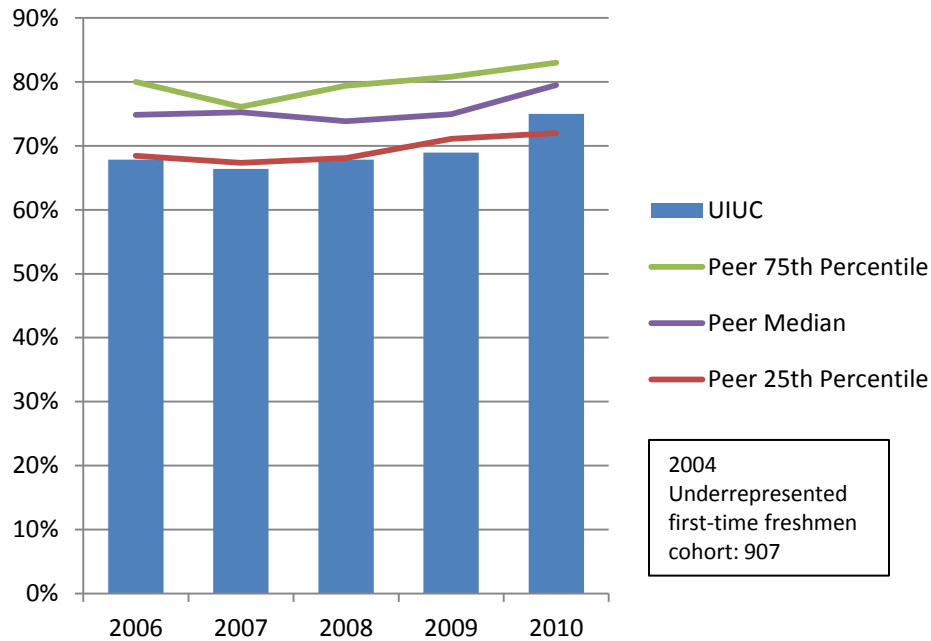
\* Includes Black, Hispanic, American Indian, Native Hawaiian/Other Pacific Islander, and multi-racial students.

# First-Time Freshmen Six-Year Graduation Rates Fall 2006 – Fall 2010



The six year graduation rate at the University of Illinois at Urbana-Champaign has been consistently above 80% but is slightly lower than the peer median.

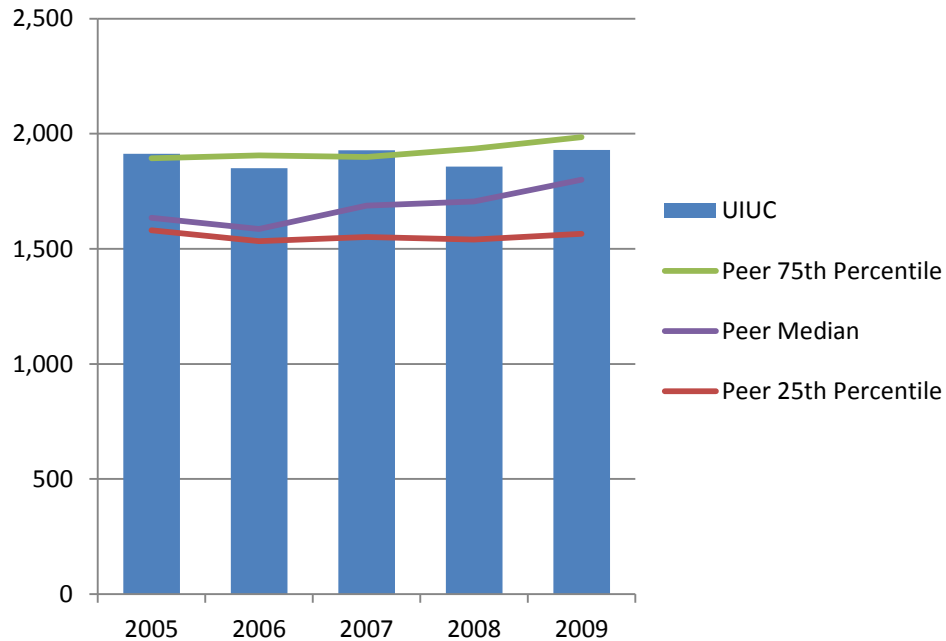
# Percent First-Time Freshmen from Underrepresented\* Groups Six-Year Graduation Rates Fall 2006 – Fall 2010



Over 70% of the students from underrepresented groups at the University of Illinois at Urbana-Champaign graduate within six years, but that number is lower than the peer median.

\* Includes Black, Hispanic, American Indian, Native Hawaiian/Other Pacific Islander, and multi-racial students.

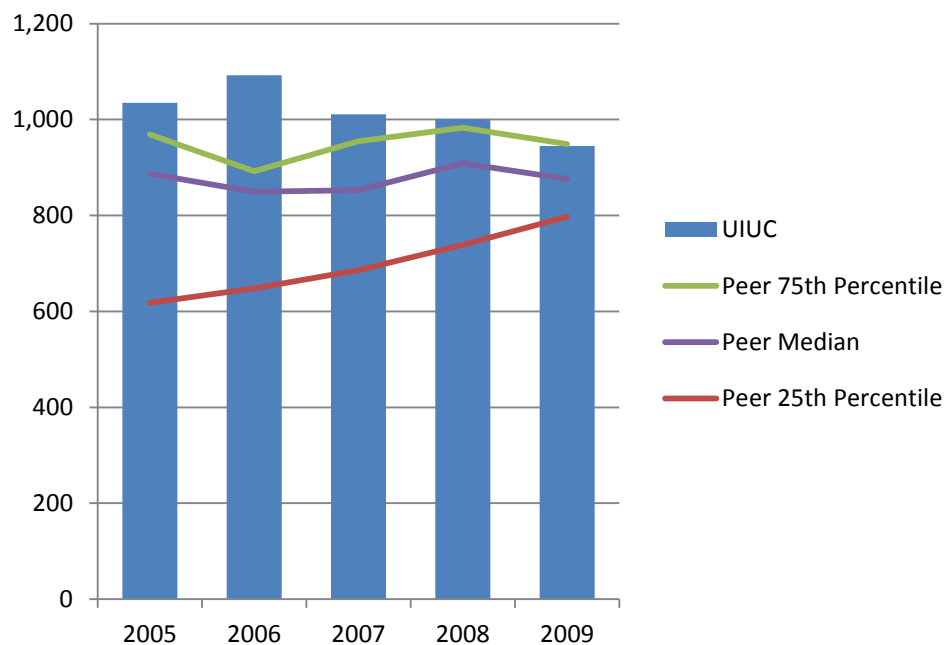
# Number of Degrees Granted in STEM\* Fields - Bachelor's FY 2005 – FY 2009



University of Illinois at Urbana-Champaign grants more undergraduate degrees in STEM fields than its peer median.

\* Science, Technology, Engineering, and Mathematics.

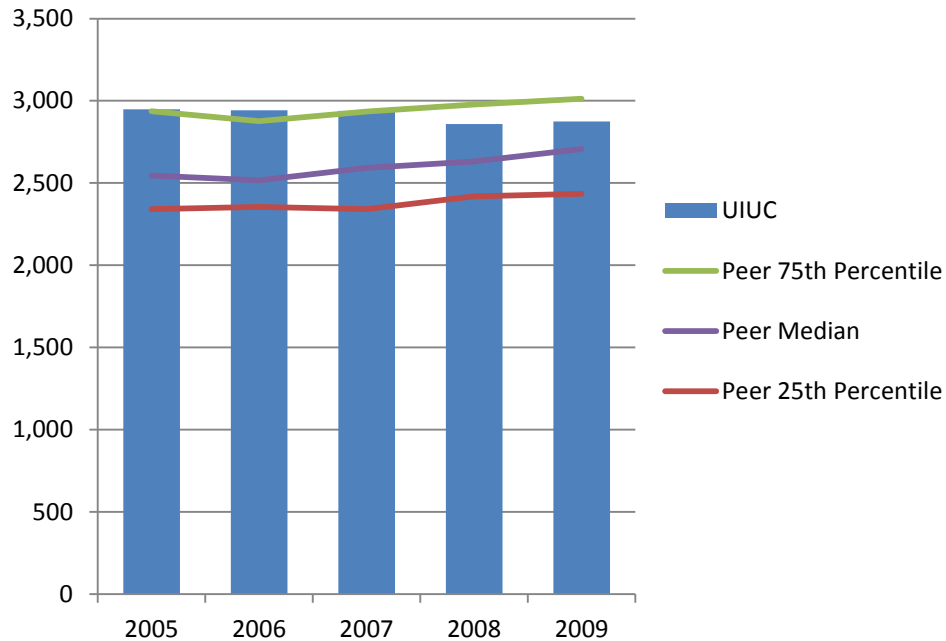
# Number of Degrees Granted in STEM\* Fields - Master's and Doctorate FY 2005 – FY 2009



University of Illinois at Urbana-Champaign grants more master's and doctorate degrees in STEM fields than its peer median.

\* Science, Technology, Engineering, and Mathematics.

# Number of Degrees Granted in STEM\* Fields - Total Degrees FY 2005 – FY 2009

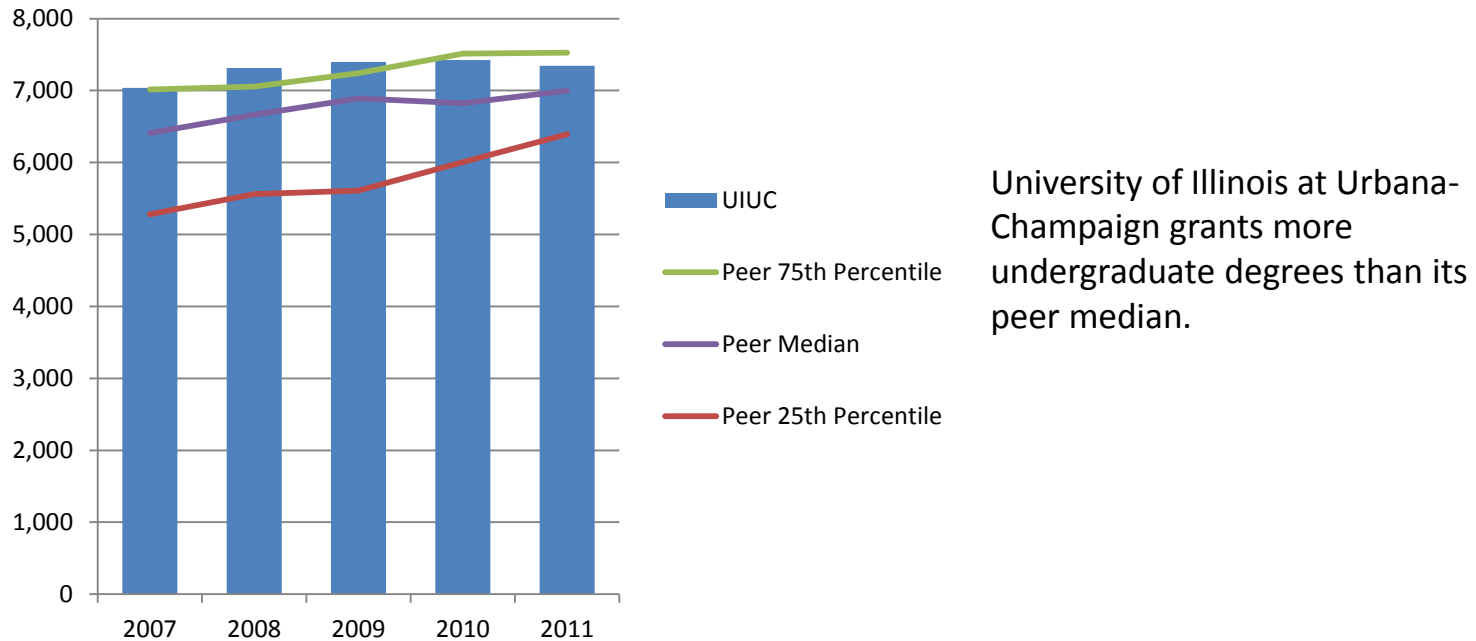


In total, the University of Illinois at Urbana-Champaign grants more degrees in STEM fields than its peer median.

\* Science, Technology, Engineering, and Mathematics.

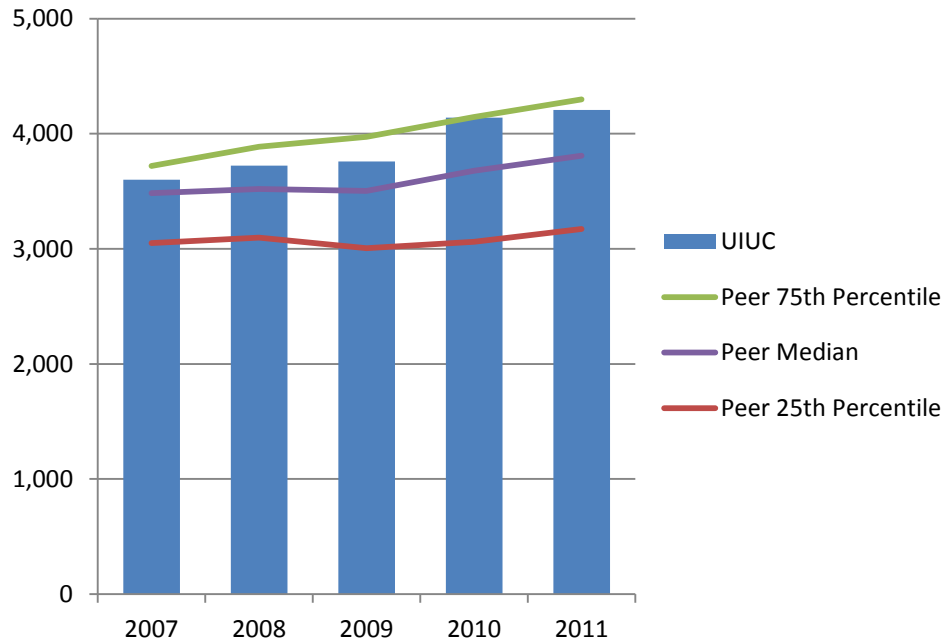


# Number of Degrees Granted - Undergraduate FY 2007 – FY 2011



Note: Only includes undergraduate degrees, excludes associate degrees and all certificates. Degrees awarded from July 1 to June 30 of each fiscal year.

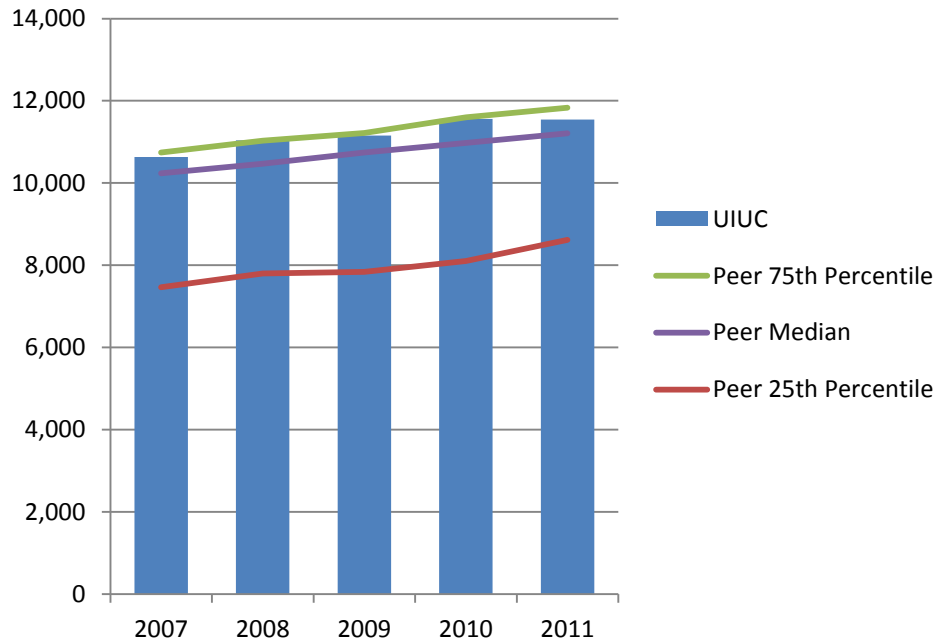
# Number of Degrees Granted - Graduate and Professional FY 2007 – FY 2011



University of Illinois at Urbana-Champaign grants more graduate and professional degrees than its peer median.

Note: Only includes graduate and professional degrees, excludes all certificates. Degrees awarded from July 1 to June 30 of each fiscal year.

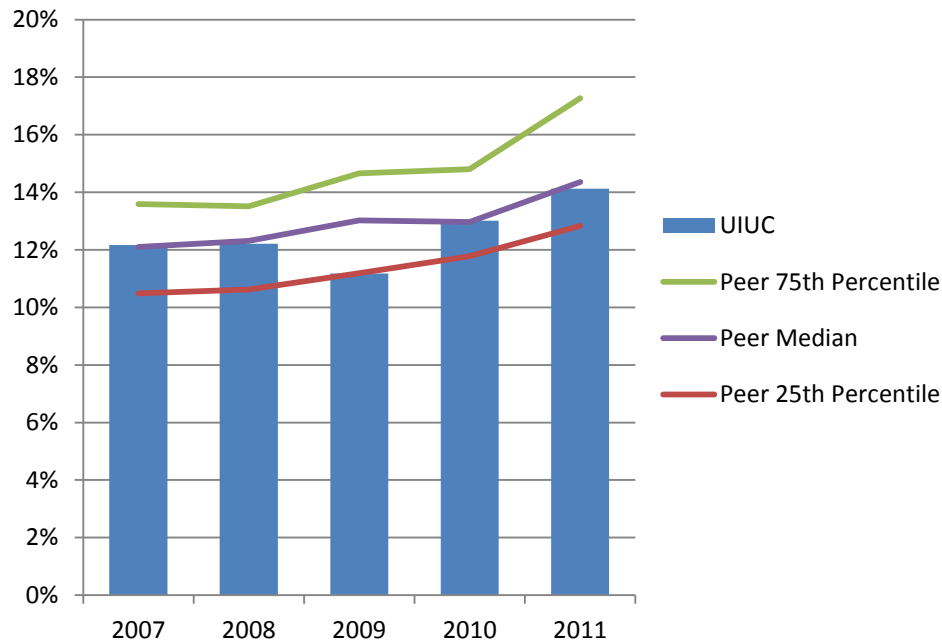
# Number of Degrees Granted - All Levels FY 2007 – FY 2011



In total, the University of Illinois at Urbana-Champaign grants more degrees than its peer median.

Note: Only includes undergraduate, graduate and professional degrees; excludes associate degrees and all certificates. Degrees awarded from July 1 to June 30 of each fiscal year.

# Percent Undergraduate Degrees Granted to Students from Underrepresented\* Groups FY 2007 – FY 2011

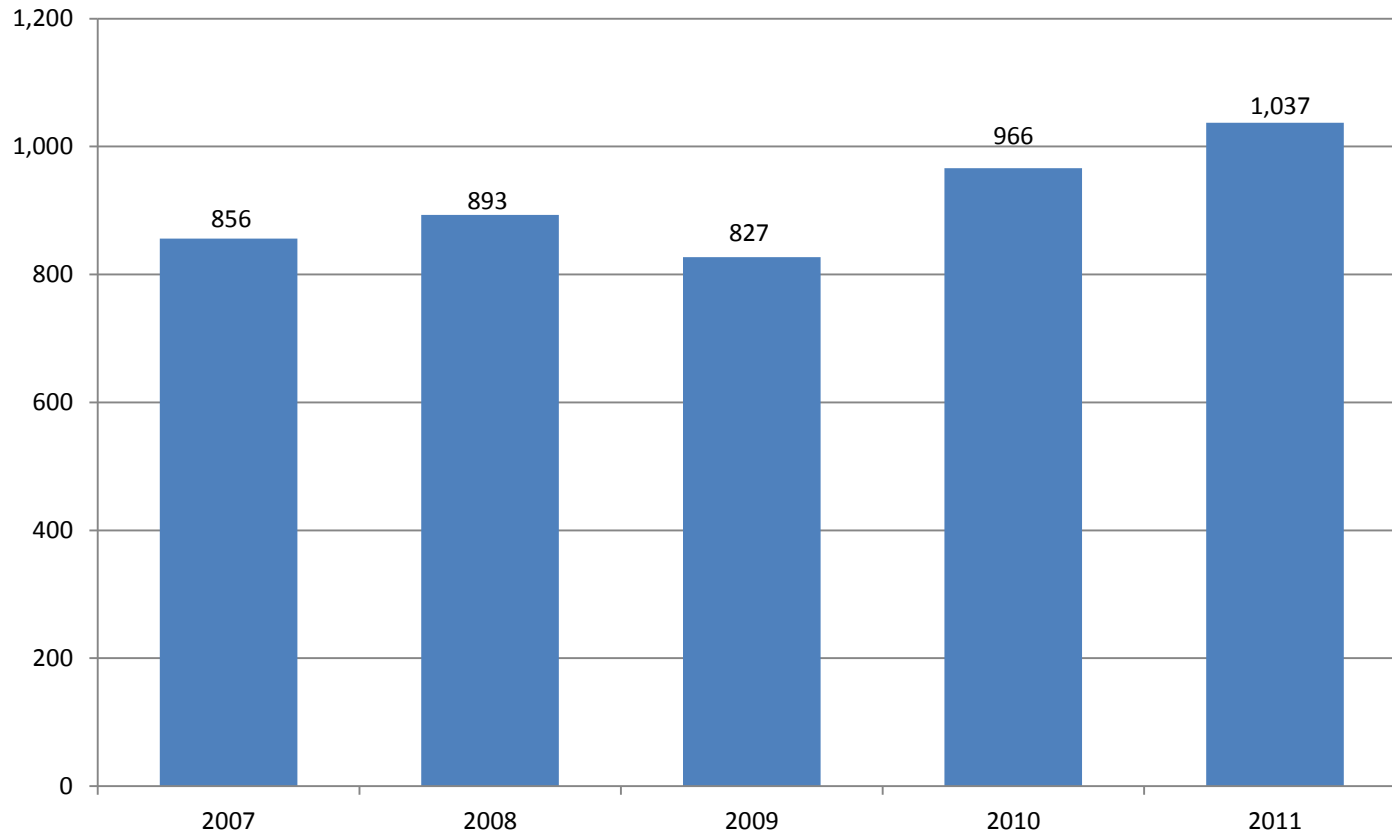


The percent of undergraduate degrees awarded to students from underrepresented groups at the University of Illinois at Urbana-Champaign is on par with its peer median.

\* Includes Black, Hispanic, American Indian, Native Hawaiian/Other Pacific Islander, and multi-racial students.

Note: Only includes undergraduate degrees, excludes associate degrees and all certificates. Degrees awarded from July 1 to June 30 of each fiscal year.

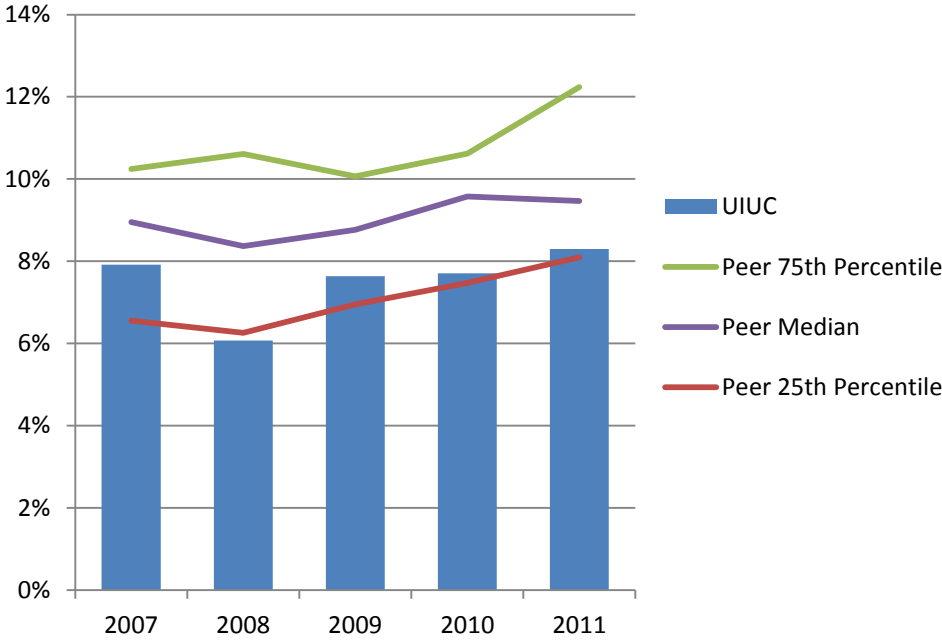
# Number of Undergraduate Degrees Granted to Students from Underrepresented\* Groups FY 2007 – FY 2011



\* Includes Black, Hispanic, American Indian, Native Hawaiian/Other Pacific Islander, and multi-racial students.

Note: Only includes undergraduate degrees, excludes associate degrees and all certificates. Degrees awarded from July 1 to June 30 of each fiscal year.

# Percent Graduate and Professional Degrees Granted to Students from Underrepresented\* Groups FY 2007 – FY 2011

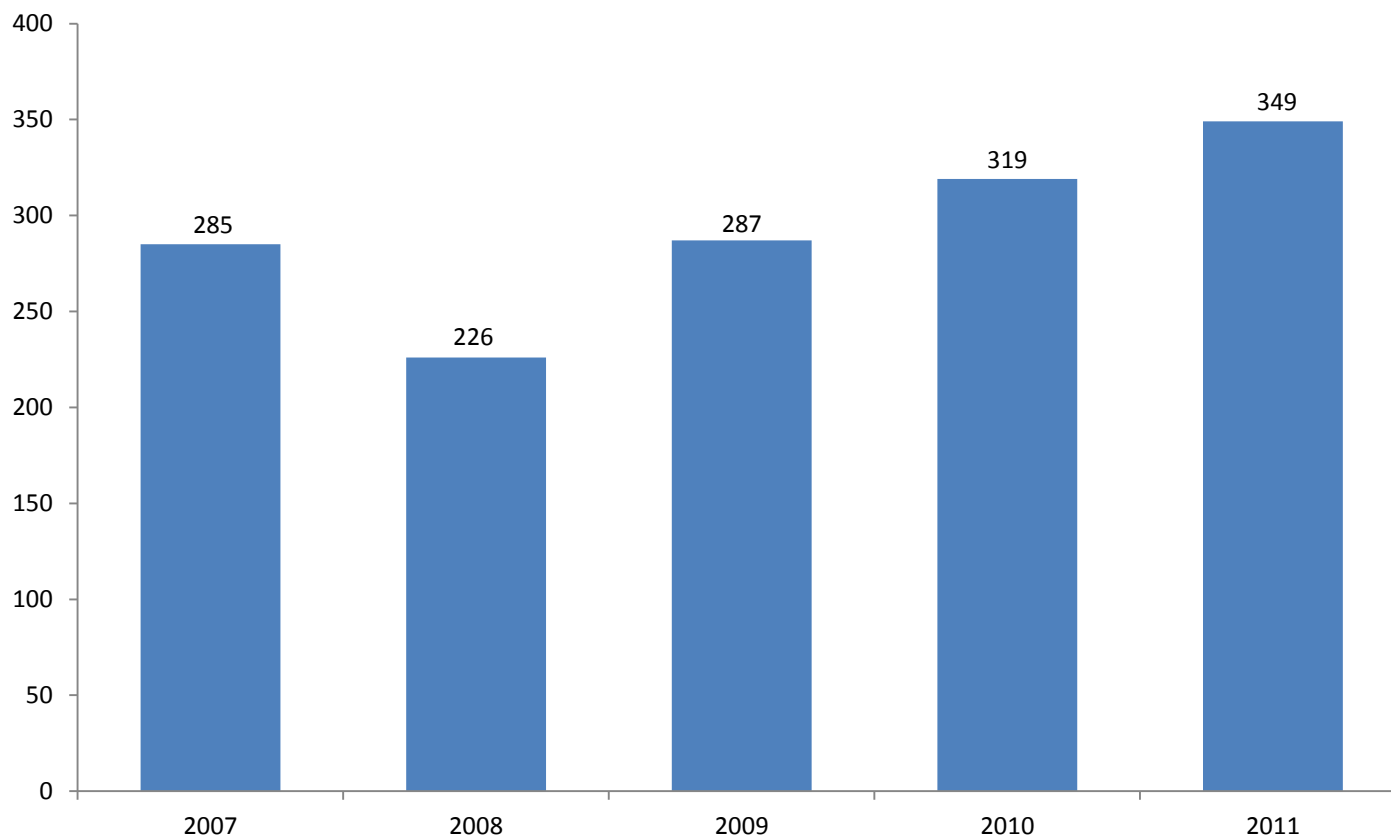


The percent of graduate and professional degrees awarded to students from underrepresented groups at the University of Illinois at Urbana-Champaign is less than its peer median.

\* Includes Black, Hispanic, American Indian, Native Hawaiian/Other Pacific Islander, and multi-racial students.

Note: Only includes graduate and professional degrees, excludes all certificates. Degrees awarded from July 1 to June 30 of each fiscal year.

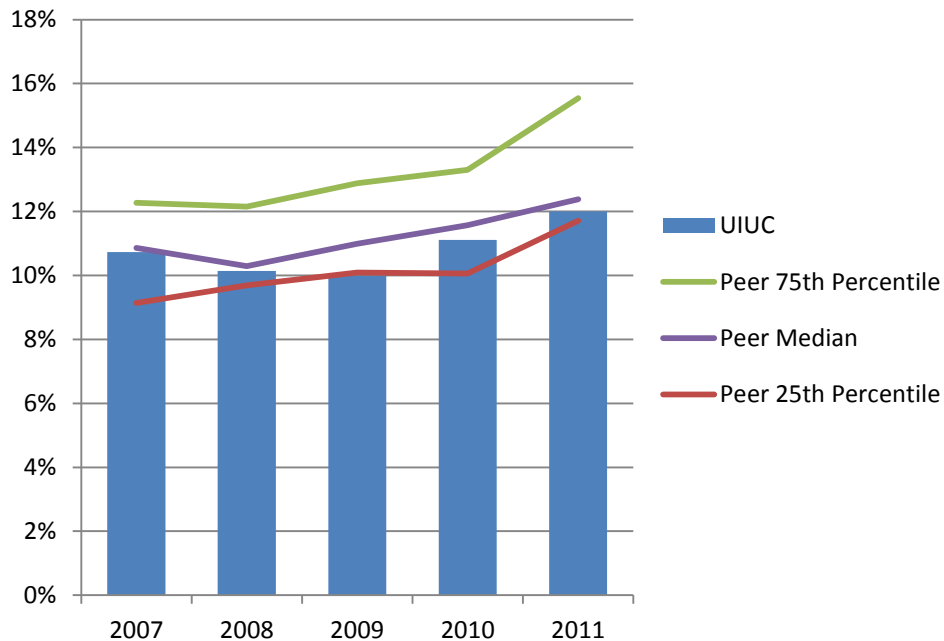
## Number of Graduate and Professional Degrees Granted to Students from Underrepresented\* Groups FY 2007 – FY 2011



\* Includes Black, Hispanic, American Indian, Native Hawaiian/Other Pacific Islander, and multi-racial students.

Note: Only includes graduate and professional degrees, excludes all certificates. Degrees awarded from July 1 to June 30 of each fiscal year.

# Percent All Degrees Granted to Students from Underrepresented\* Groups FY 2007 – FY 2011



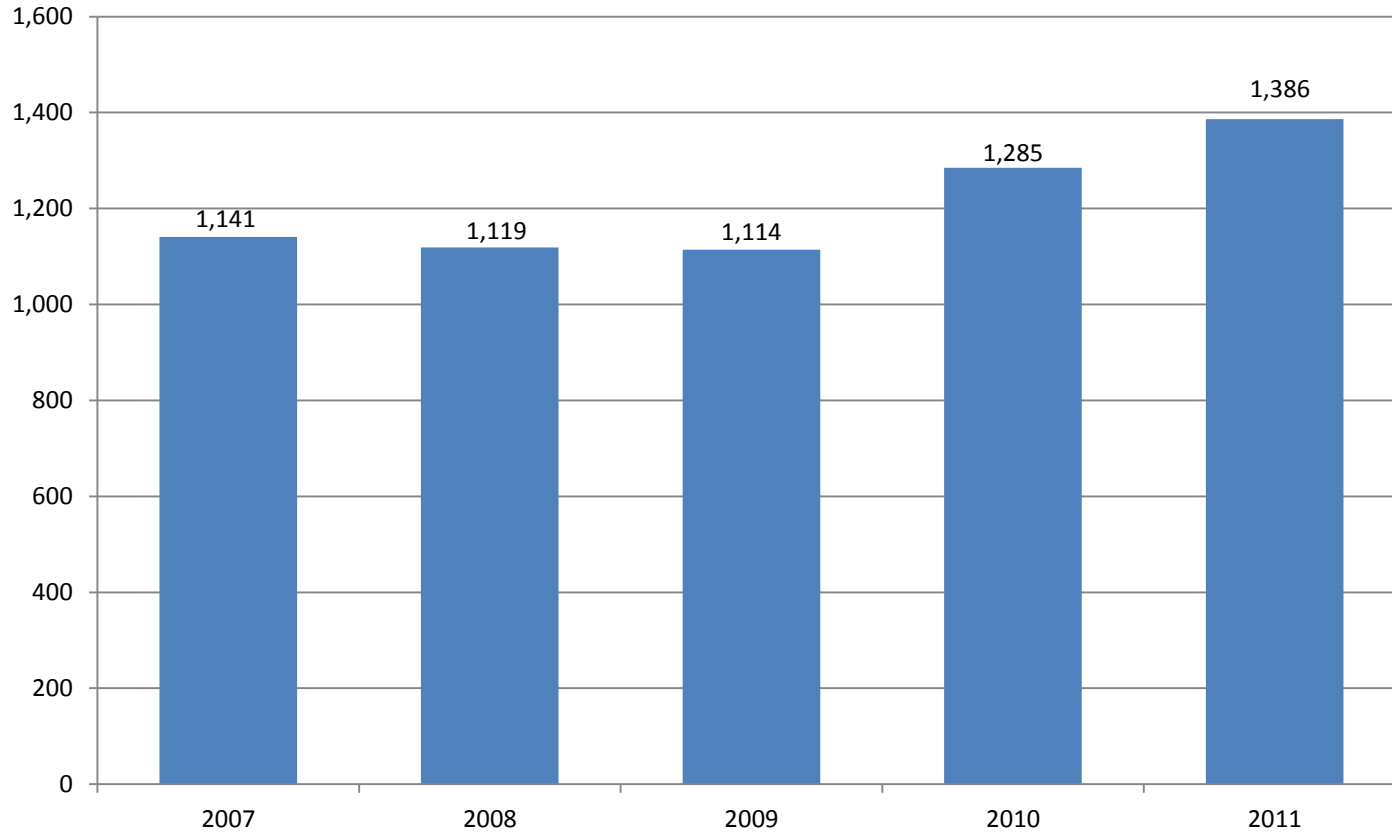
The percent of total degrees awarded to students from underrepresented groups at the University of Illinois at Urbana-Champaign is similar to its peer median.

\* Includes Black, Hispanic, American Indian, Native Hawaiian/Other Pacific Islander, and multi-racial students.

Note: Only includes undergraduate, graduate, and professional degrees; excludes associate degrees and all certificates. Degrees awarded from July 1 to June 30 of each fiscal year.



# Number of All Degrees Granted to Students from Underrepresented\* Groups FY 2007 – FY 2011



\* Includes Black, Hispanic, American Indian, Native Hawaiian/Other Pacific Islander, and multi-racial students.

Note: Only includes undergraduate, graduate, and professional degrees; excludes associate degrees and all certificates. Degrees awarded from July 1 to June 30 of each fiscal year.

# 2010 Doctoral Program Assessment

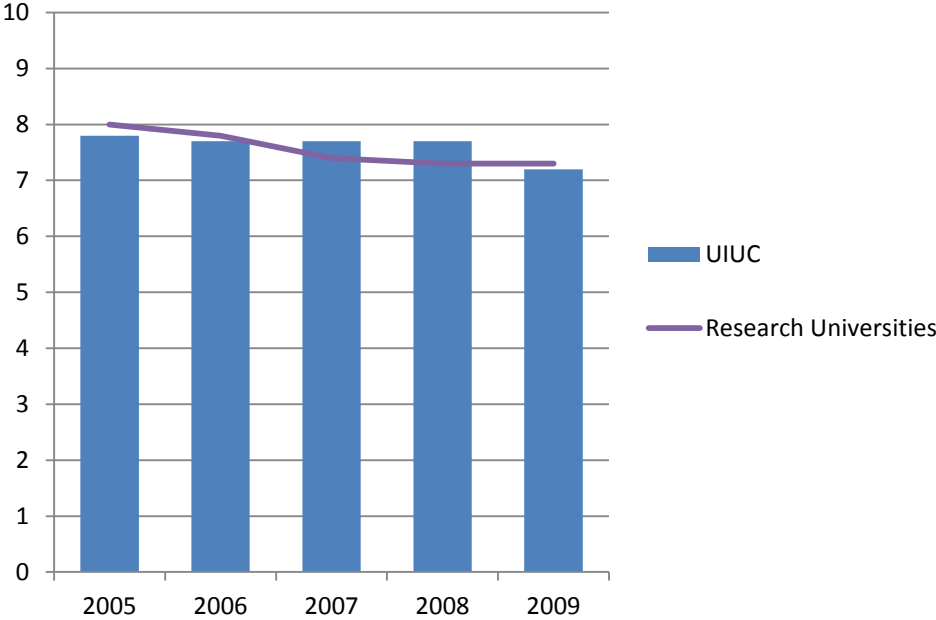
**Area – I**  
**Engineering & Physical Sciences**  
**22 programs**

**Area-II**  
**Humanities & Creative Arts**  
**24 programs**

**Area-III**  
**Social & Behavioral Sciences**  
**32 programs**

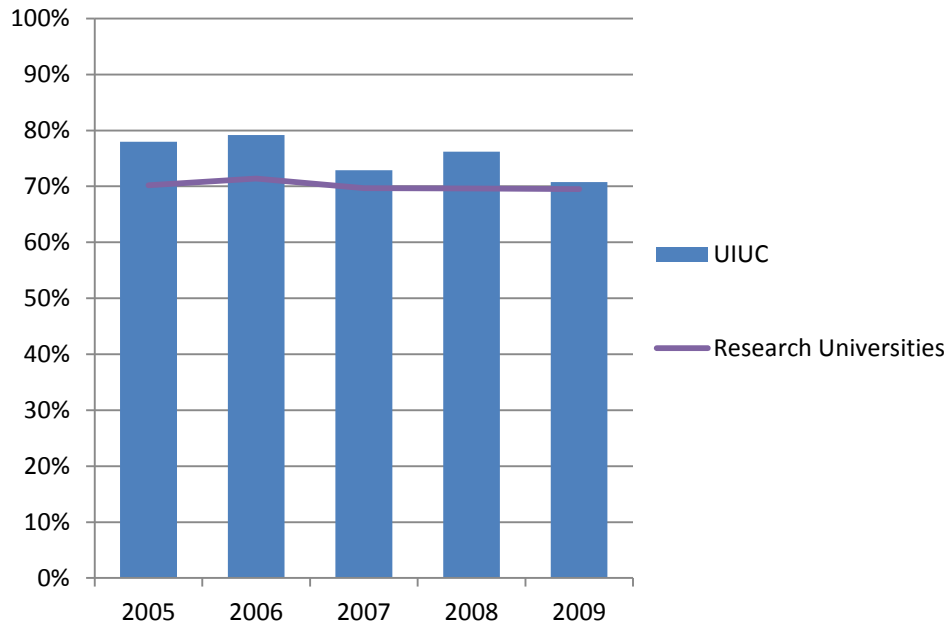
**Area-IV**  
**Agricultural & Biological Sciences**  
**20 programs**

# Doctoral Median Time to Degree Since Starting Graduate School (Number of Years) AY 2005 – AY 2009



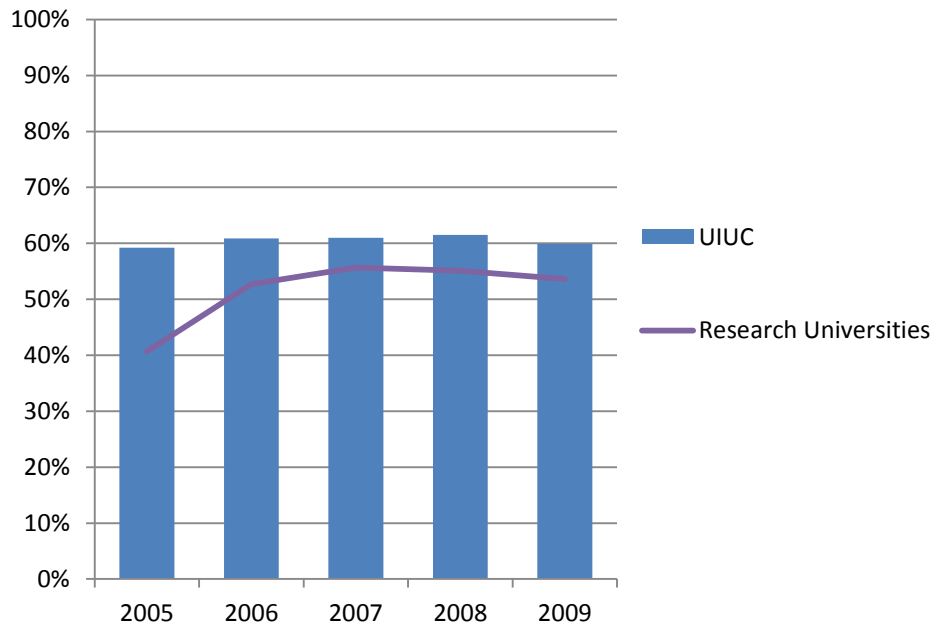
The time taken to complete a doctoral degree at the University of Illinois at Urbana-Champaign is on par with other research universities.

# % Doctorates with Employment or Postdoctoral Research Training Commitments AY 2005 – AY 2009



The percent of research doctorate recipients at the University of Illinois at Urbana-Champaign who have definite commitments for employment or postdoctoral research training at graduation is higher than at other research universities.

# % Doctorates Having No Graduate or Undergraduate Education–Related Debt AY 2005 – AY 2009

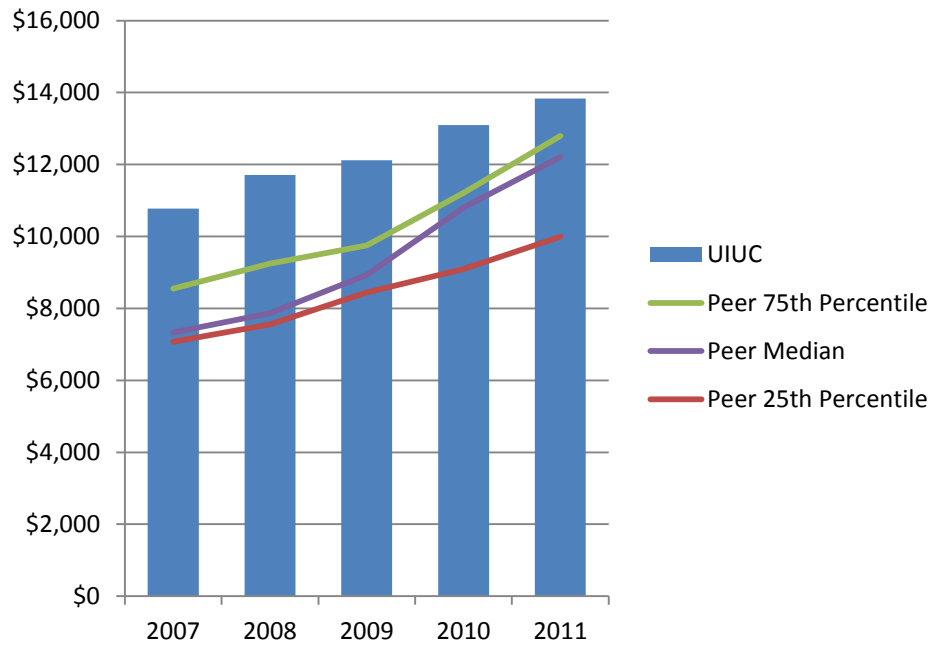


The percent of research doctorate recipients at the University of Illinois at Urbana-Champaign who had no debt related to their undergraduate or graduate education when they were awarded their doctorate is higher than at other research universities.

# Tuition and Financial Aid

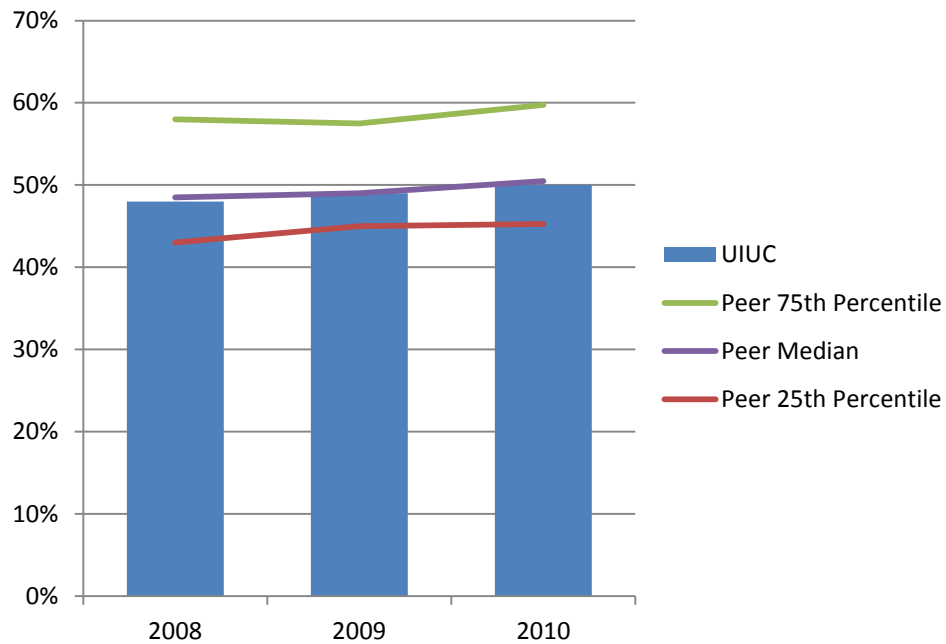


# Undergraduate In-State Tuition and Fees Per Academic Year AY 2007 – AY 2011



Undergraduate tuition and fees at the University of Illinois at Urbana-Champaign are higher than its peer median.

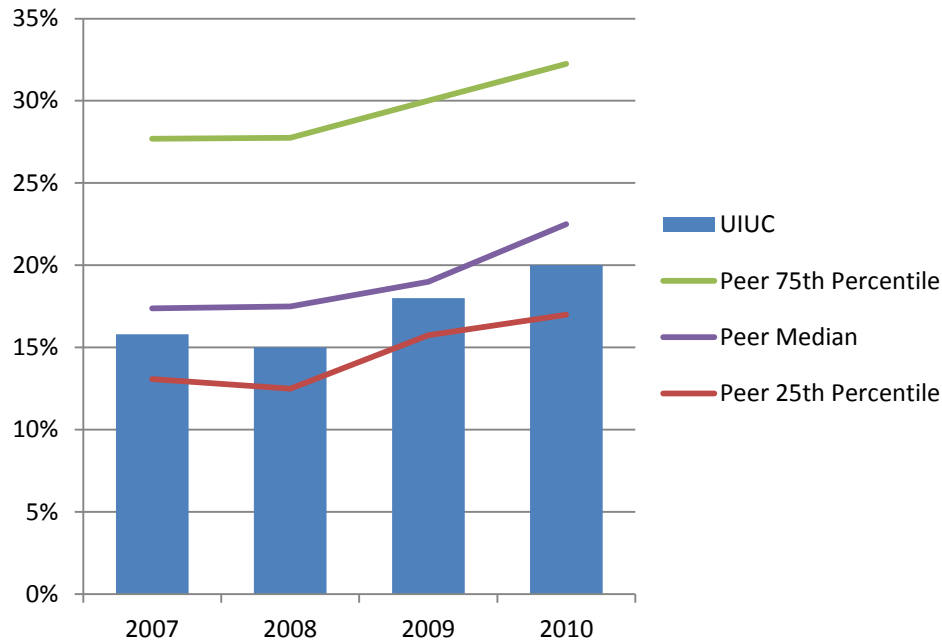
# Percent Undergraduate Students Receiving Federal, State, or Local Institutional or Other Sources of Need or Merit Grant Aid: AY 2008 – AY 2010



The percent of undergraduate students at the University of Illinois at Urbana-Champaign who receive financial aid is on par with its peer median.



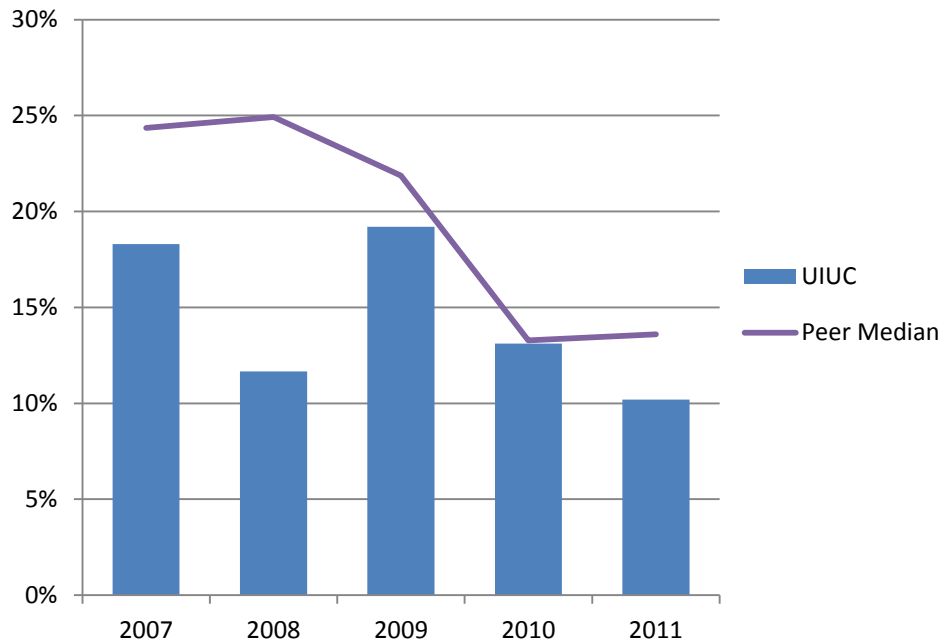
# Percent Undergraduate Students Receiving Pell Grants AY 2007 – AY 2010



University of Illinois at Urbana-Champaign has a lower percent of Pell grant recipients than its peer median.

# Percent Full-Time Undergraduates Awarded Any Need-Based Scholarship/Grant Aid Where Need Was Fully Met: AY 2007 – AY 2011

(excludes PLUS loans, unsubsidized, and private alternative loans)

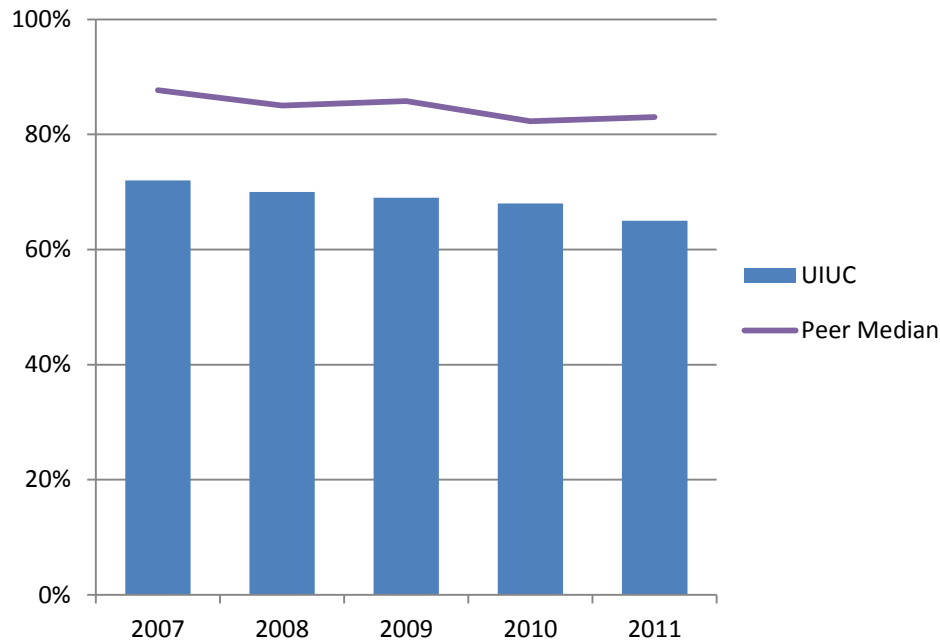


Compared to its peer median, a lower percentage of need-based aid recipients at the University of Illinois at Urbana-Champaign have their needs fully met.

Note: Excludes University of Washington due to lack of available data.

# Percent Need Met of Full-Time Undergraduates Awarded Any Need-Based Aid AY 2007 – AY 2011

(excludes any aid awarded in excess of need as well as any that were awarded to replace EFC: PLUS, unsubsidized and private alternative loans)

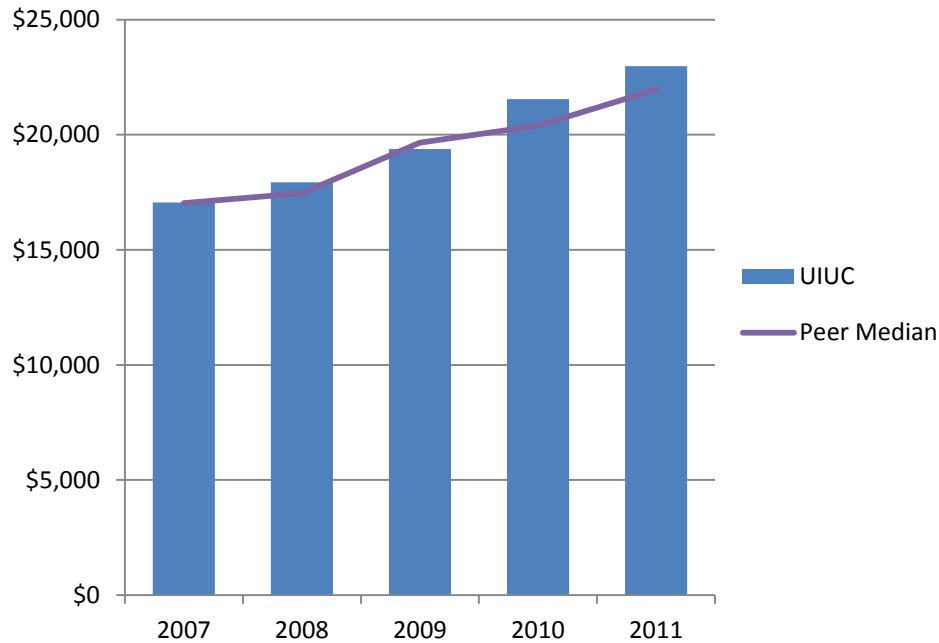


University of Illinois at Urbana-Champaign students who receive need-based aid have a lower percentage of their financial need met compared to the peer median.

Note: Excludes University of Washington due to lack of available data.

# Average Per Undergraduate-Borrower Cumulative Principal Borrowed AY 2007 – AY 2011

(excludes any aid awarded in excess of need as well as any that were awarded to replace EFC: PLUS, unsubsidized and private alternative loans)

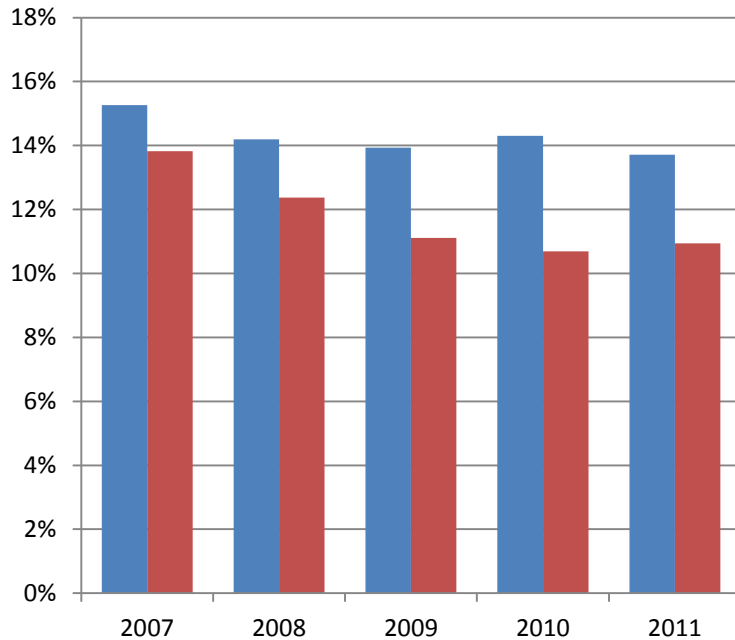


The average debt of the University of Illinois at Urbana-Champaign students is on par with the peer median.

Note: Excludes University of Washington and University of North Carolina-Chapel Hill due to lack of available data.

# Percent Full-Time Undergraduates Paying Less than \$3,000 Per Semester Fall 2007 – Fall 2011

(Includes all forms of financial aid and tuition waivers. Excludes loans and employment)



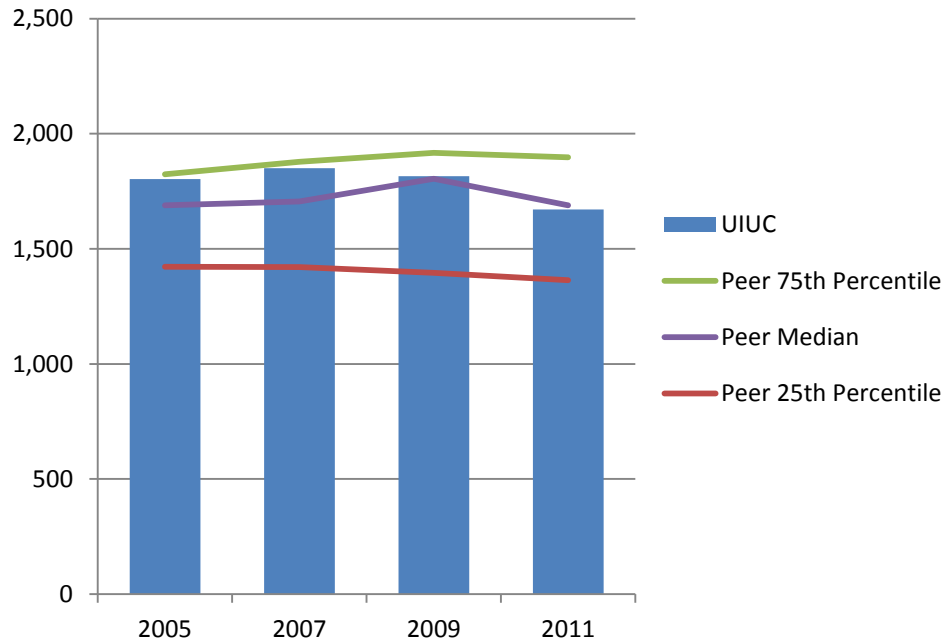
■ \$0  
■ \$1 - \$2,999

One-fourth of undergraduates at the University of Illinois at Urbana-Champaign pay less than \$3,000 per semester for tuition.

# Faculty and Scholarship

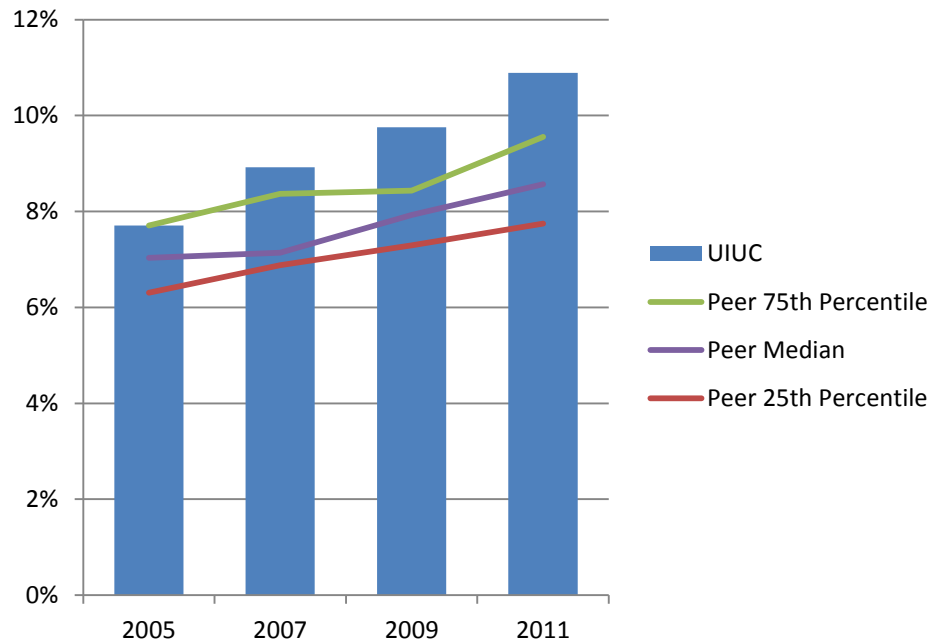


# Number of Tenure System Faculty Selected Fall Terms



University of Illinois at Urbana-Champaign has about the same number of tenure system faculty as its peer median.

# Percent Tenure System Faculty from Underrepresented\* Groups Selected Fall Terms

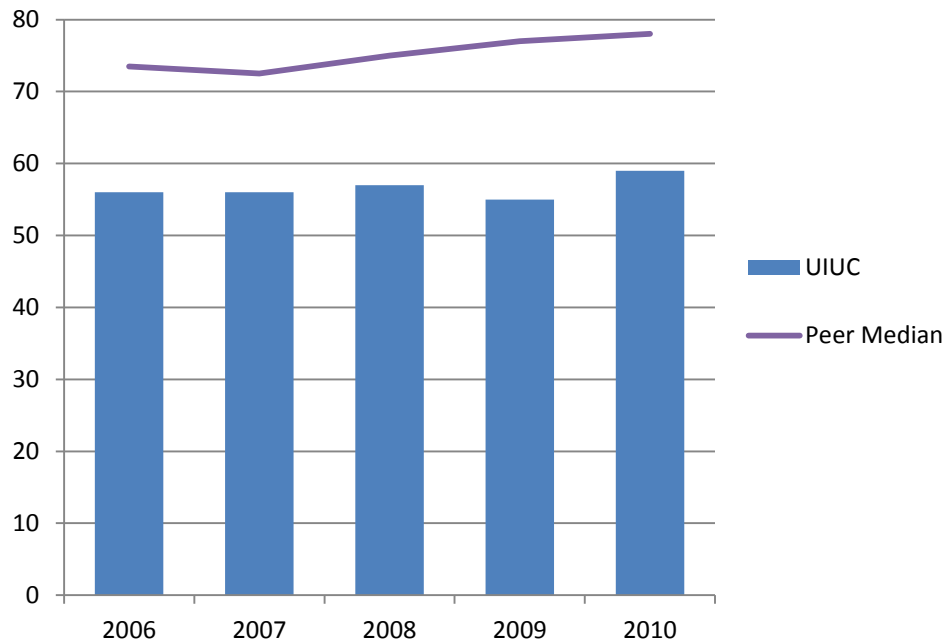


Compared to its peer median, the University of Illinois at Urbana-Champaign has a higher percent of tenure system faculty from underrepresented groups.

\* Includes Black, Hispanic, American Indian, Native Hawaiian/Other Pacific Islander, and multi-racial faculty.



# National Academy Memberships FY 2006 – FY 2010



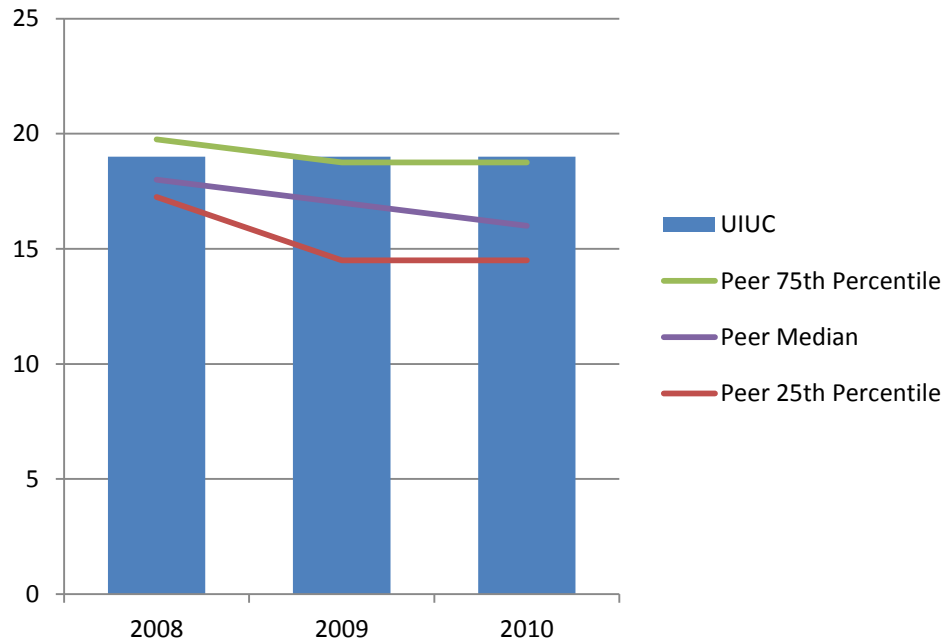
University of Illinois at Urbana-Champaign has fewer National Academy memberships than its peer median.

# National Academy Memberships

## Current Year

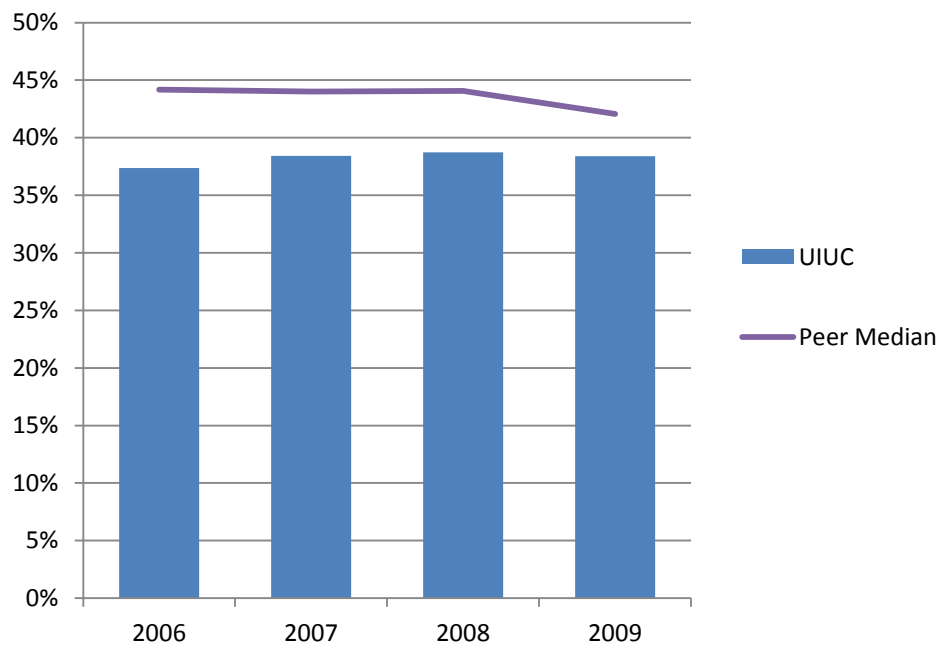
| Academy                         | Faculty Members | National Rank (AAU) | New Since 2000 |
|---------------------------------|-----------------|---------------------|----------------|
| National Academy of Sciences    | 27              | 18                  | 8              |
| National Academy of Engineering | 28              | 7                   | 9              |
| Institute of Medicine           | 2               |                     | 2              |

# Student to Faculty Ratios Fall 2008 – Fall 2010



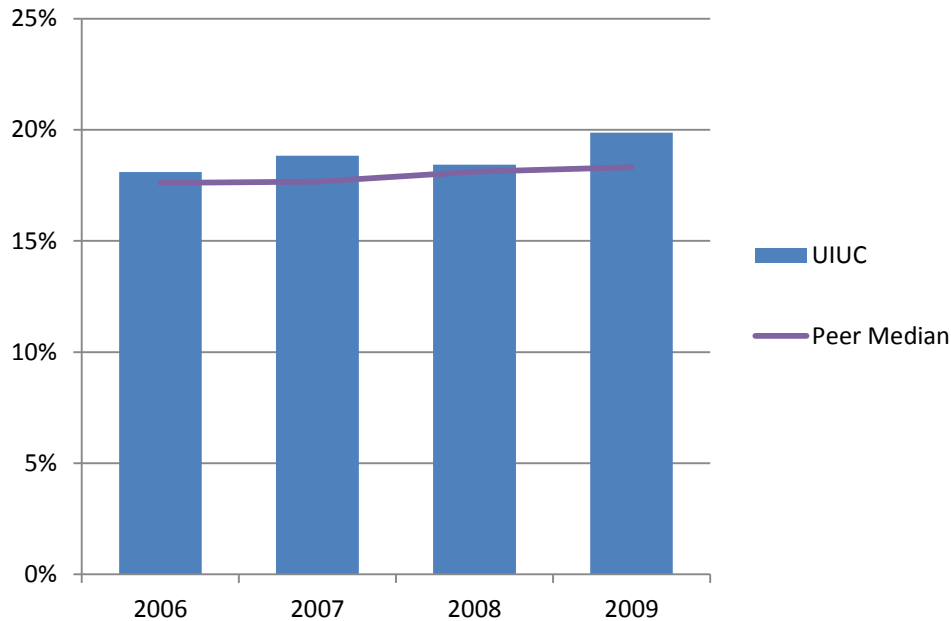
University of Illinois at Urbana-Champaign has a higher student to faculty ratio than its peer median.

# Percent Undergraduate Class Sections with Fewer Than 20 Students Fall 2006 – Fall 2009



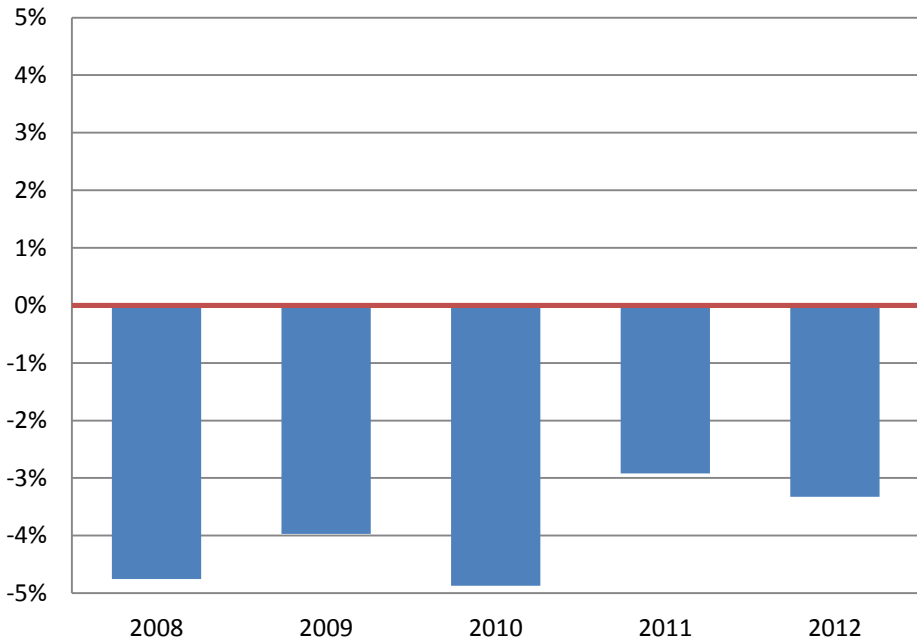
The percent of classes with less than 20 students at the University of Illinois at Urbana-Champaign is less than its peer median.

# Percent Undergraduate Class Sections with More Than 50 Students Fall 2006 – Fall 2009



The percent of classes with more than 50 students at the University of Illinois at Urbana-Champaign is higher than its peer median.

# Faculty\* Salary - Difference from Peer Median FY 2008 – FY 2012



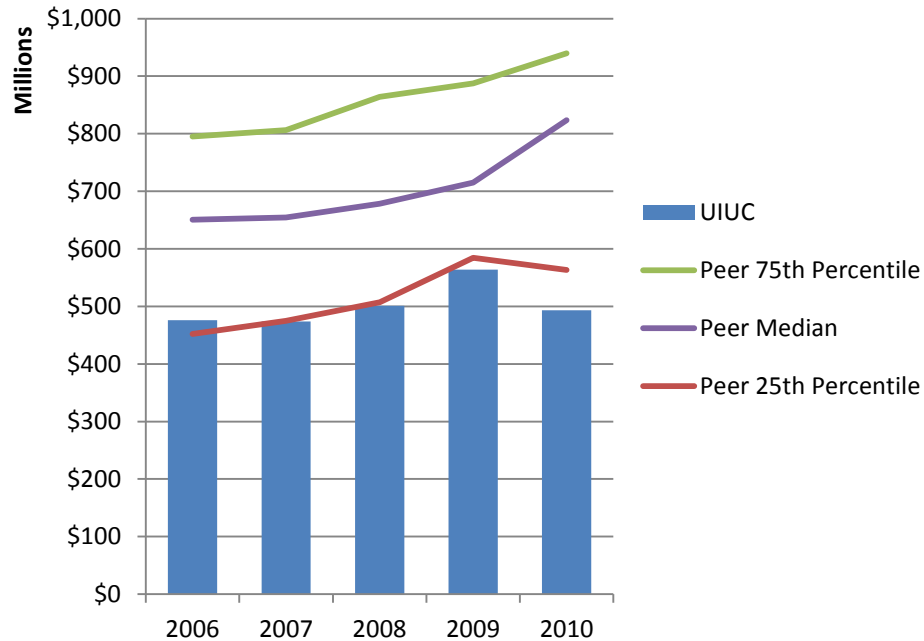
Average faculty salary at the University of Illinois at Urbana-Champaign is lower than its peer median.

\* Includes full-time instructional faculty and excludes clinical faculty.

# Research Performance



# Total Science and Engineering Research and Development Expenditures\* FY 2006 – FY 2010



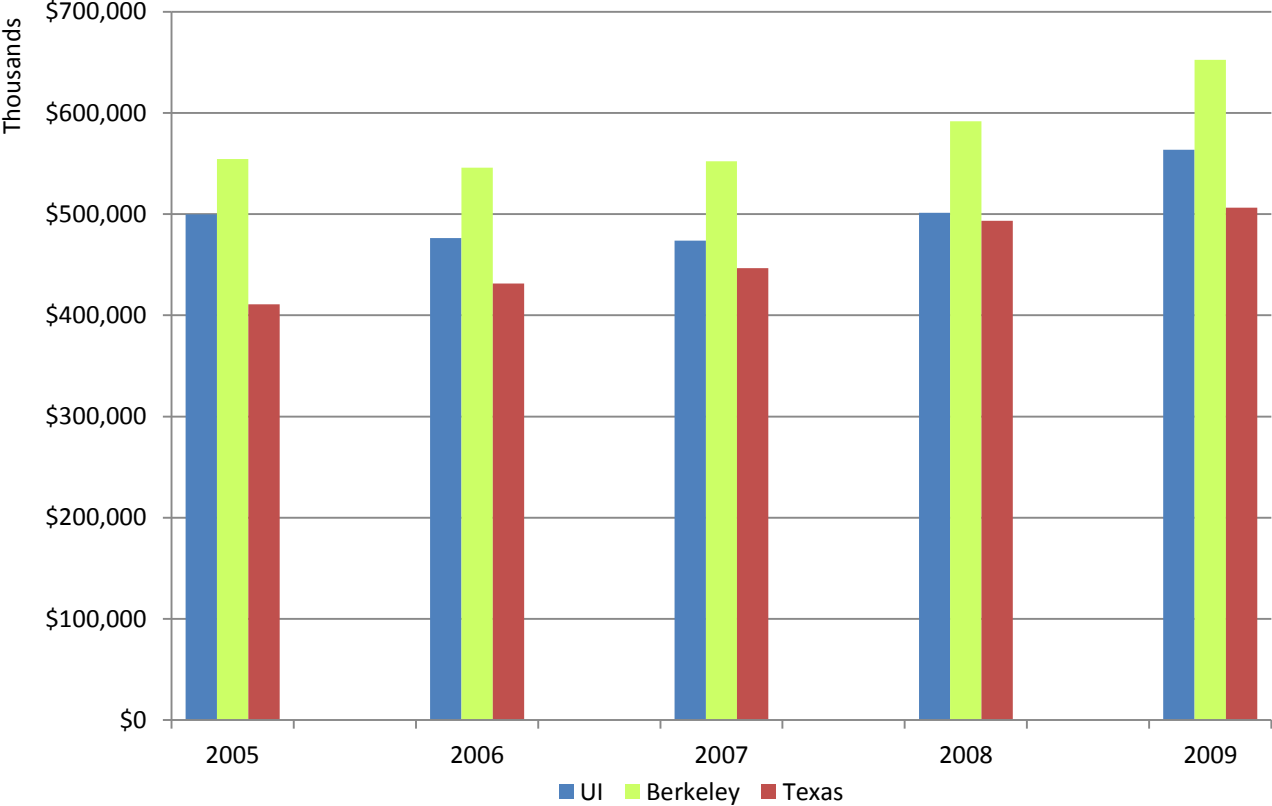
Though increasing in FY 2008 and FY 2009, science and engineering research expenditures at the University of Illinois at Urbana-Champaign are less than the peer median.

Urbana-Champaign does not have a medical center but six of its nine peers do have one and another peer is affiliated with one.

\* As reported to the NSF Survey of Research and Development Expenditures.

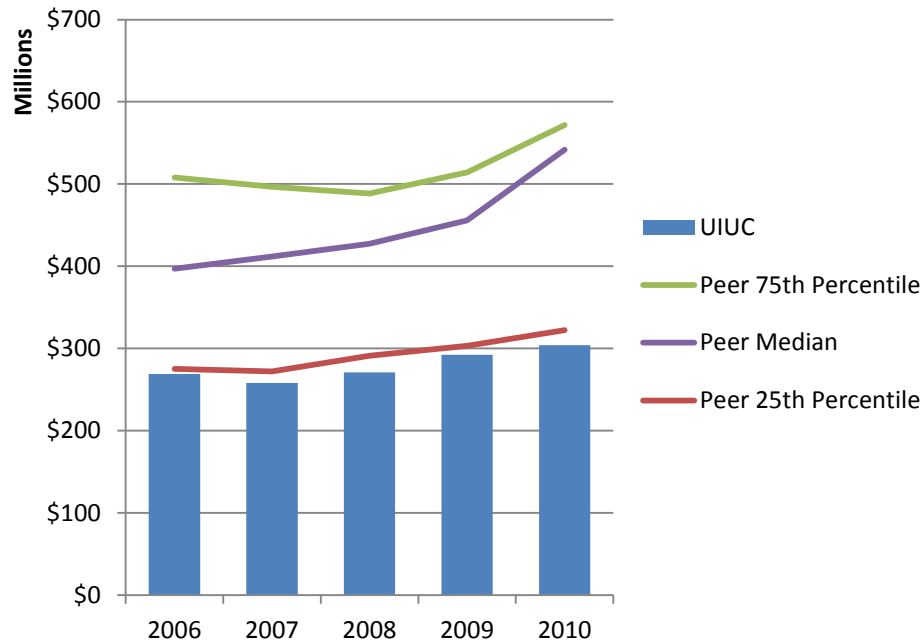


# Total Science and Engineering Research and Development Expenditures\* Among Peers Without Medical Center or Affiliated Medical Center FY 2005 – FY 2009



\* As reported to the NSF Survey of Research and Development Expenditures.

# Total Federal Research Funding\* FY 2006 – FY 2010



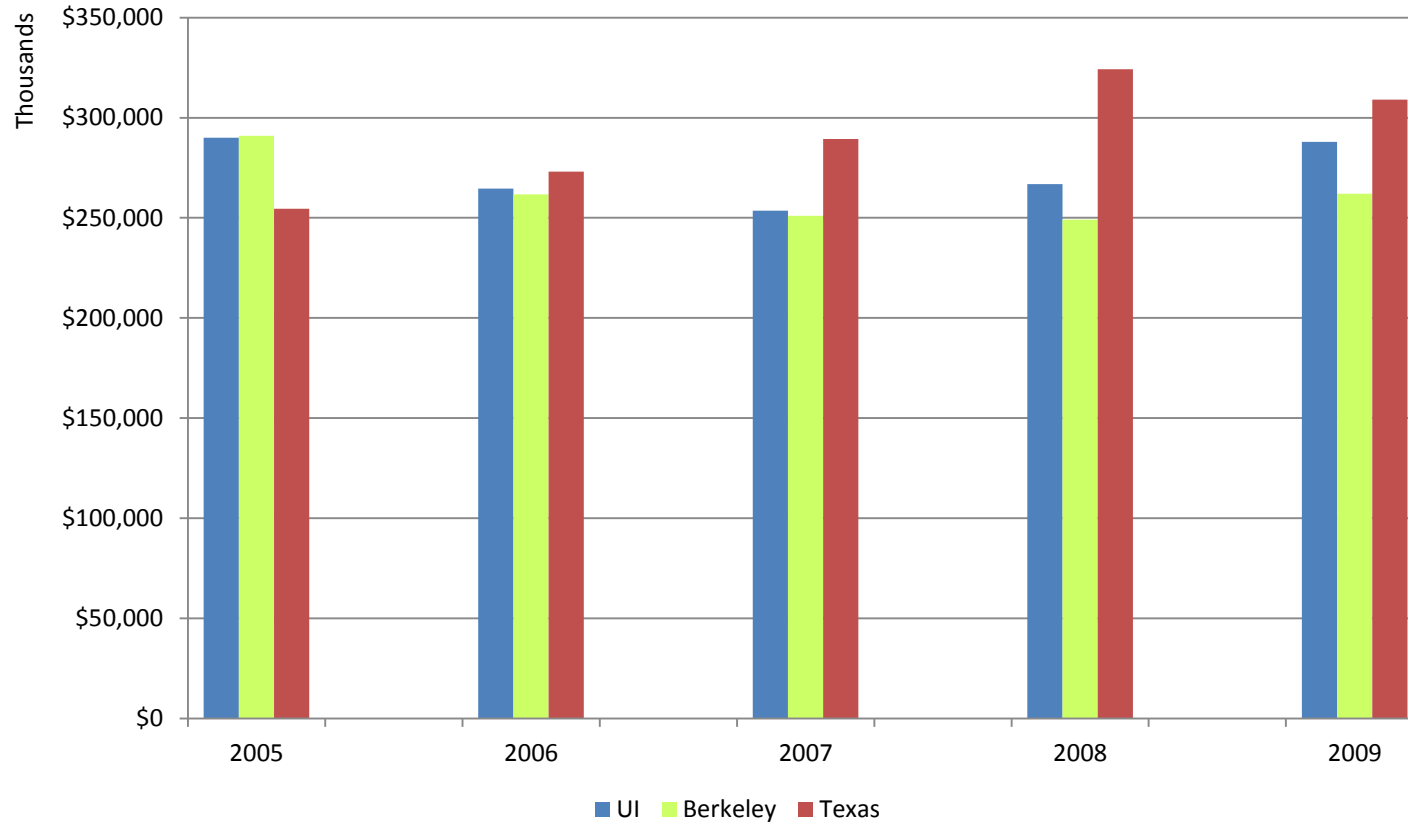
University of Illinois at Urbana-Champaign receives less total federal research funding than its peer median.

Urbana-Champaign does not have a medical center but six of its nine peers do have one and another is affiliated with one.

\* As reported to the NSF Survey of Research and Development Expenditures.

# Total Federal Research Funding\*

## Among Peers Without Medical Center or Affiliated Medical Center FY 2005 – FY 2009



\* As reported to the NSF Survey of Research and Development Expenditures.

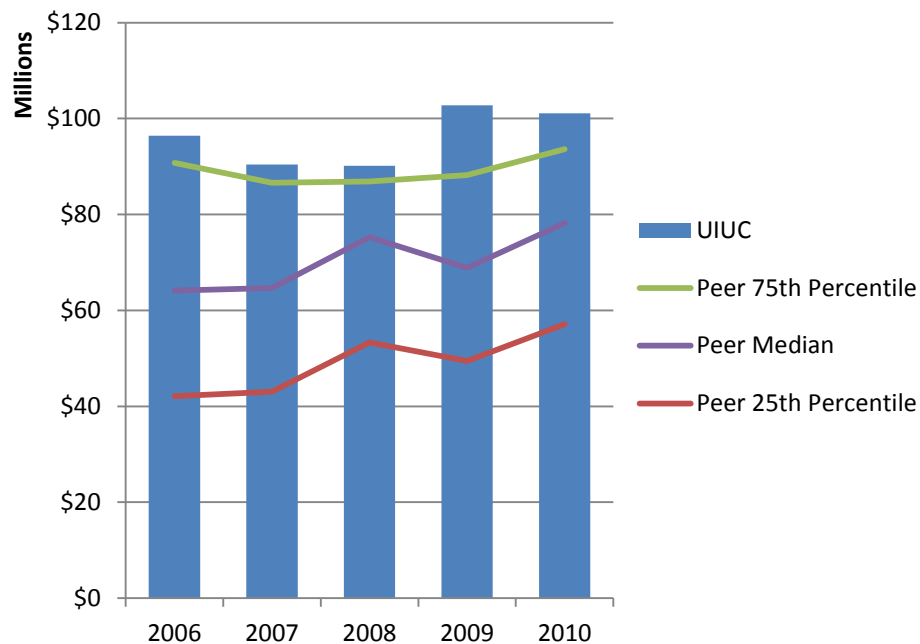
# National Rank by Federal Agency Research Funding\* FY 2009

|                | NSF | DOE | USDA | DOD | NASA | HHS |
|----------------|-----|-----|------|-----|------|-----|
| UI             | 1   | 4   | 8    | 15  | 43   | 81  |
| Wisconsin      | 5   | 1   | 22   | 48  | 21   | 21  |
| Washington     | 6   | 12  | 84   | 99  | 26   | 5   |
| UCSD           | 7   | 23  | 133  | 14  | 40   | 12  |
| Berkeley       | 10  | 54  | 52   | 27  | 10   | 59  |
| Michigan       | 12  | 7   | 87   | 10  | 16   | 3   |
| UCLA           | 13  | 10  | 118  | 23  | 25   | 10  |
| Texas          | 18  | 19  | 103  | 4   | 32   | 93  |
| North Carolina | 54  | 99  | 163  | 188 | 179  | 9   |
| Virginia       | 57  | 83  | 351  | 58  | 56   | 43  |

| UI Share of All Agency R&D 2009 |       |
|---------------------------------|-------|
| DOD                             | 1.29% |
| DOE                             | 2.42% |
| NSF                             | 2.60% |
| NASA                            | 0.52% |
| USDA                            | 0.69% |
| HHS                             | 0.35% |

\* As reported to the NSF Survey of Research and Development Expenditures. Among all universities, public and private.

# National Science Foundation Funded Research and Development FY 2006 – FY 2010



University of Illinois at Urbana-Champaign receives more NSF funding than its peer median and is consistently ranked in the top five among its peers.

NSF is the largest source of Federal R&D funding for the University of Illinois at Urbana-Champaign.

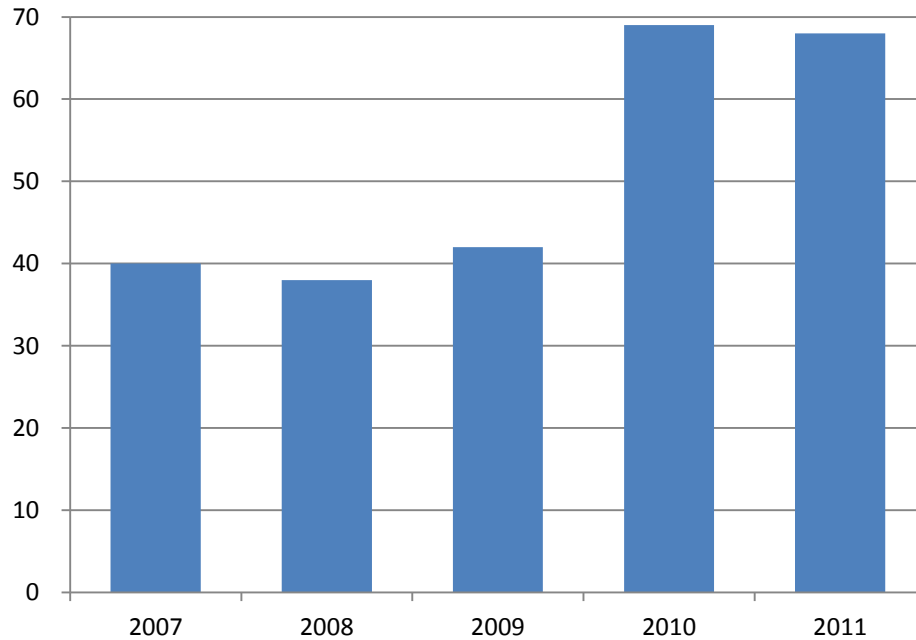
\* Some institutions reported combined campus data.

# National Science Foundation Funded Research Development Top 15 Institutions FY 2011

| Institution  | Total            | Research Support | Education & Human Resources | Major Research Equipment |
|--|------------------|------------------|-----------------------------|--------------------------|
| <b>University of Illinois at Urbana-Champaign</b>                | <b>\$195,802</b> | <b>\$192,670</b> | <b>\$3,133</b>              | <b>\$0</b>               |
| RAYTHEON TECHNICAL SERVICES COMPANY LLC                          | \$161,621        | \$161,621        | \$0                         | \$0                      |
| University Corporation For Atmospheric Res                       | \$145,385        | \$141,604        | \$3,781                     | \$0                      |
| Consortium for Ocean Leadership, Inc                             | \$140,505        | \$75,257         | \$248                       | \$65,000                 |
| Cornell University   | \$122,709        | \$113,388        | \$9,321                     | \$0                      |
| University of California-Berkeley                                | \$119,092        | \$100,264        | \$18,827                    | \$0                      |
| California Institute of Technology                               | \$96,265         | \$69,303         | \$3,382                     | \$23,580                 |
| University of Texas at Austin                                    | \$93,480         | \$86,575         | \$6,905                     | \$0                      |
| University of Wisconsin-Madison                                  | \$90,786         | \$80,363         | \$8,800                     | \$1,623                  |
| University of Washington   | \$85,901         | \$75,890         | \$10,010                    | \$0                      |
| University of Michigan Ann Arbor                                 | \$85,166         | \$68,615         | \$16,551                    | \$0                      |
| Associated Universities Inc/National Radio Astronomy Observatory | \$81,913         | \$68,024         | \$0                         | \$13,889                 |
| Columbia University  | \$81,508         | \$75,262         | \$6,246                     | \$0                      |
| Massachusetts Institute of Technology                            | \$81,222         | \$69,685         | \$11,536                    | \$0                      |
| Purdue University  | \$79,310         | \$69,406         | \$9,904                     | \$0                      |

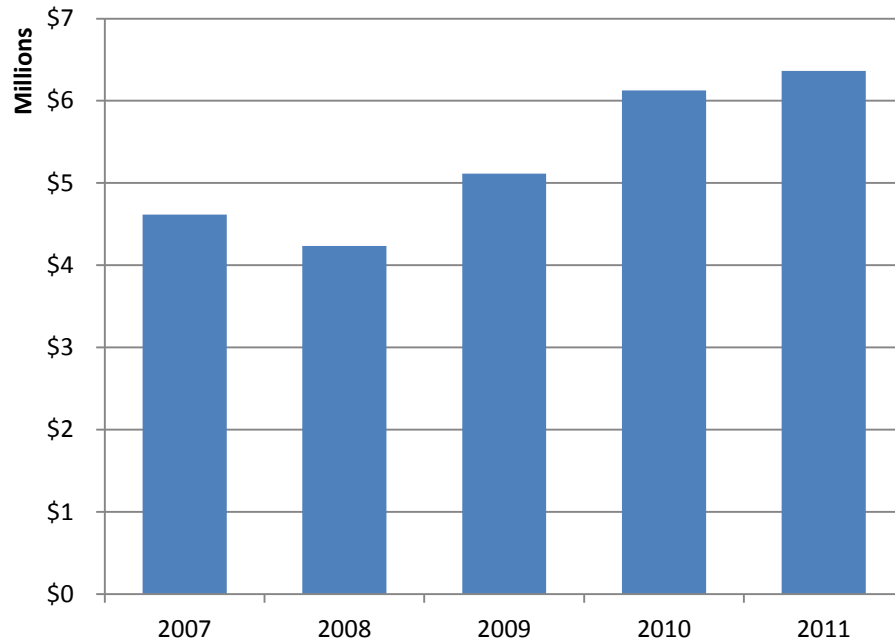
Source: <http://dellweb.bfa.nsf.gov/Top50Inst2/default.asp>

# Number of Patents Received FY 2007 – FY 2011



The number of patents received by the University of Illinois at Urbana-Champaign increased significantly since FY 2009.

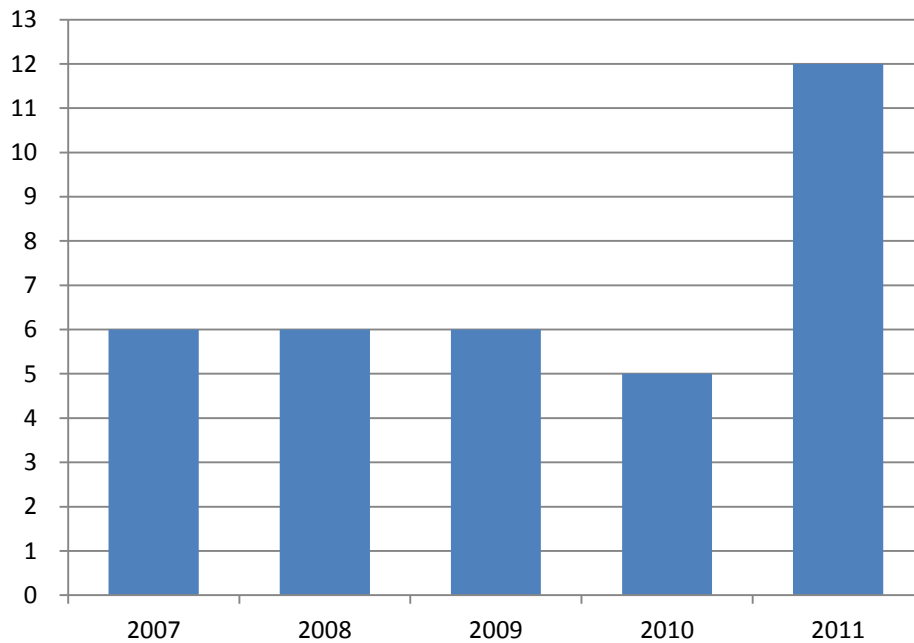
# Licensing Revenues FY 2007 – FY 2011



Licensing revenues earned at the University of Illinois at Urbana-Champaign have been growing since FY 2008.



# Number of New Start-Up Companies Formed FY 2007 – FY 2011

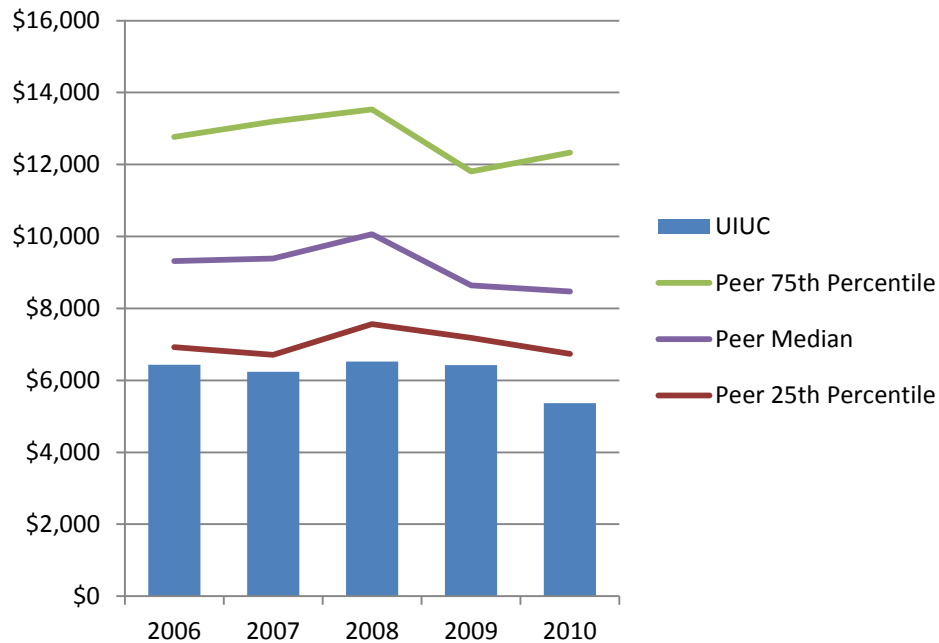


In 2011 the number of new companies started based on technology developed at the University of Illinois at Urbana-Champaign more than doubled compared with previous years.

# Financial Indicators



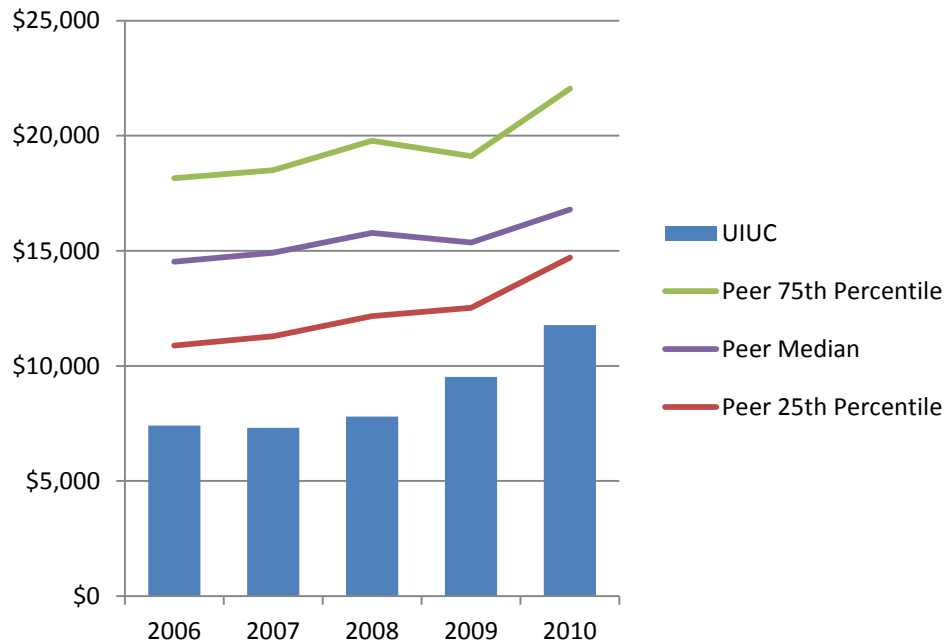
# State Appropriations per FTE Enrollment FY 2006 – FY 2010



University of Illinois at Urbana-Champaign receives less state support per student than the median of its public peers.

Note: Does not include any allocation of University Administration expenses.

# Instructional Expenses per FTE Enrollment FY 2006 – FY 2010



Instructional expenses per student at the University of Illinois at Urbana-Champaign is lower than its peer median.

Note: Does not include any allocation of University Administration expenses.  
Increase in FY09 is related to benefit payments being spread by function.

# Advancement Peer Groups



## **University of Illinois at Urbana-Champaign**

Indiana University - Bloomington

Michigan State University

Pennsylvania State University

University of California - Berkeley

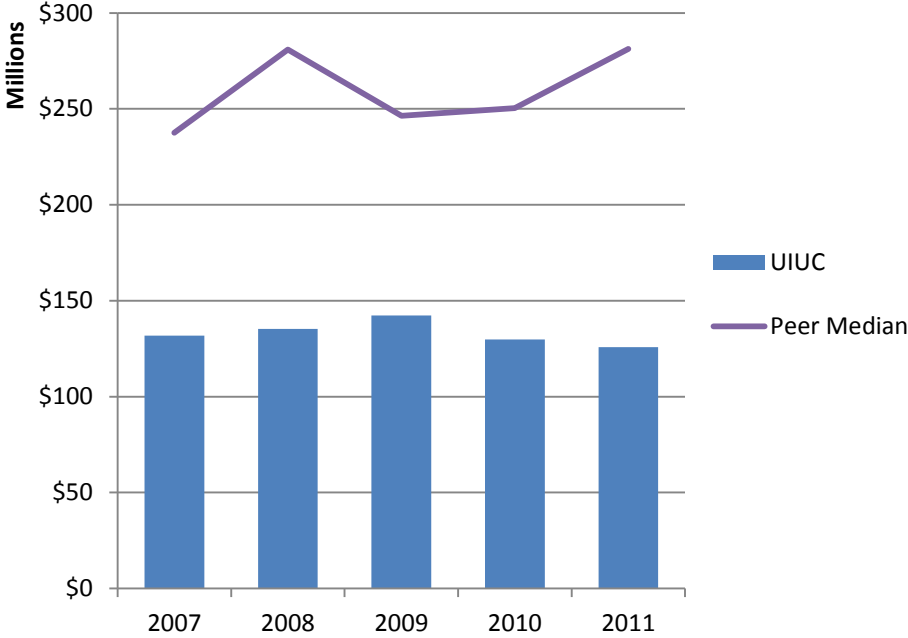
University of Michigan - Ann Arbor

University of Texas - Austin

University of Wisconsin - Madison

Note: All institutions are public.

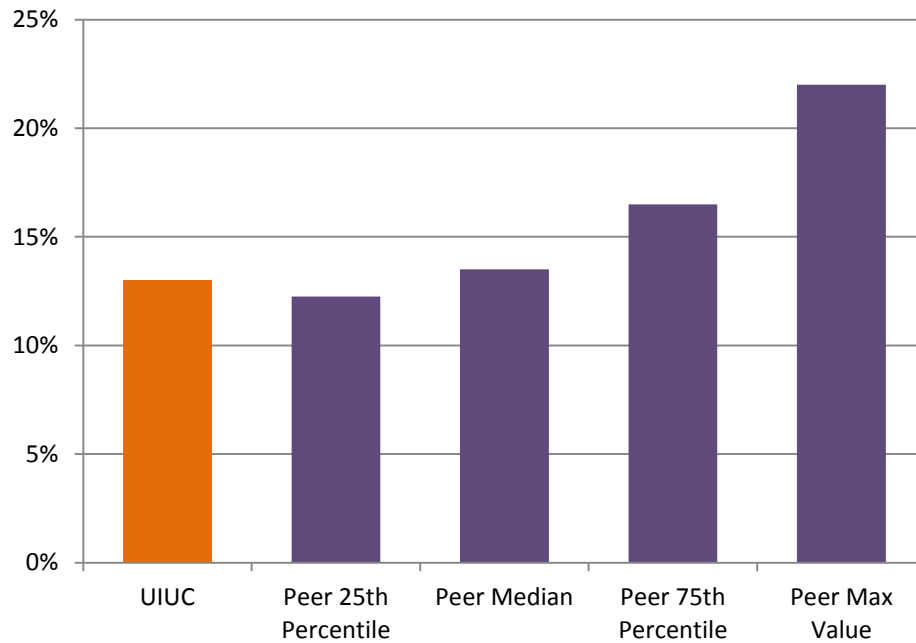
# Gift Income - Total Gifts FY 2007 – FY 2011



University of Illinois at Urbana-Champaign receives less gift income than its peer median.

Note: UI Advancement Peer Group.

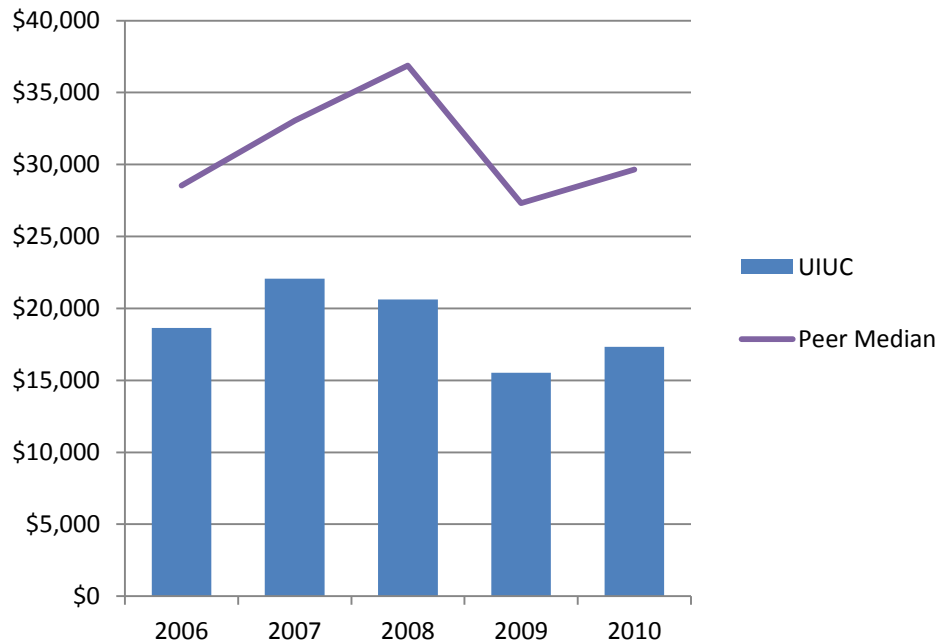
# Annual Giving Rate AY 2009 – AY 2010



University of Illinois at Urbana-Champaign has a slightly lower percent of alumni donating money than its peer median.

Note: Peer data from US News & World Report, 2011 Edition. Annual giving rate is a two year average.

# Endowment Assets per FTE Enrollment FY 2006 – FY 2010



University of Illinois at Urbana-Champaign has a smaller endowment per student than its peer median.

Note: UI Advancement Peer Group.





ABOUT | VISIONING SESSIONS | LISTENING AND LEARNING SUMMARY | TAKE OUR SURVEY

## Announcements

### Chancellor's Blog

Dr. Wise makes every effort to keep in touch and let you know how she's progressing. She wants to hear your ideas from you:

<http://illinois.edu/blog/view/1100>

### The Research University in the World of the Future Seminar Series

"The Research University in the World of the Future," is designed to provide the campus community the opportunity to engage leaders in higher education as we seek to address society's changing needs. As we envision our campus 20 to 50 years into the future, we are exploring how to best position the university for continued relevance and impact.

The first talk in the series is scheduled for May 2 and features Maria Helena Nazare, the newly elected and first female president of the European University Association. She will deliver her public message from 4-5 p.m. in the ballroom of the Alice Campbell Alumni Center, 601 S. Lincoln Ave., Urbana.

### Visioning Excellence Survey

You can participate in a short survey that will allow you to share your ideas on the critical issues facing society as well as Illinois' role in addressing those challenges.

The responses to this survey will help forward our long-term strategic planning. All responses to the survey are anonymous. Your participation in the survey is completely voluntary. You may access the survey by clicking on this link: <https://illinois.edu/ib/sec/2152588>.

## From the Chancellor



Welcome to "Visioning Future Excellence at Illinois." This site will serve as a guide to a series of luncheons that bring together a diverse cross-section of the university and external community. Professor Doug Beck will host a speaker series of some of the most respected academic leaders from around the nation and the world. They will visit our campus and speak on the topic "The Research University in the World of the Future." This site will document the progress. We hope to highlight the impact of critical social issues, the sharing of ideas and challenges, and discuss strategic plans to maintain vibrancy of this institution.

## Up Next...

The following sessions have been scheduled to continue to reach out for campus input:

May 2 – Named and Endowed Chairs

May 7 – Named and Endowed Chairs

May 15 – Chancellor's Staff

May 19 – Alumni

