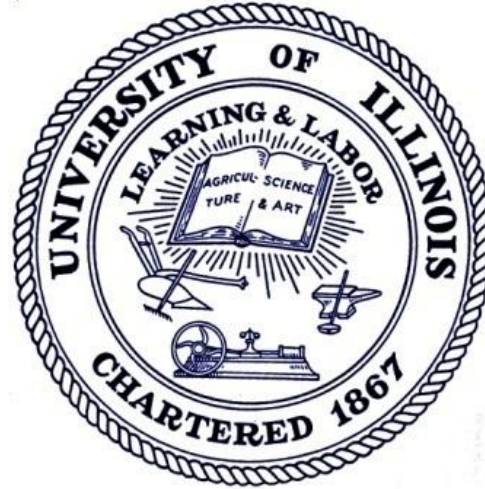


DASHBOARD INDICATORS



UNIVERSITY OF ILLINOIS

URBANA-CHAMPAIGN • CHICAGO • SPRINGFIELD

Presentation to
BOARD OF TRUSTEES
January 18, 2012

Strategic Priorities

- **Student Access and Enrollment**
- **Student Outcomes**
- Tuition and Financial Aid
- Faculty and Scholarship
- Research Performance
- Financial Indicators
- Hospital and Clinical Practice

Diversity

Metrics

- **Student Access and Enrollment**

- Fall Term Enrollment by Level
- First-Time Freshmen Enrollment
- % First-Time Freshmen Applicants Admitted
- % First-Time Freshmen Admissions Yield
- % Enrolled Students from Underrepresented Groups
- ACT Composite Scores 25th and 75th Percentile
- ACT English, Math Scores 25th and 75th Percentile
- Number of Enrolled First-Time Transfers
- % Enrolled Transfers from Underrepresented Groups

- **Student Outcomes**

- Freshmen to Sophomore One-Year Retention Rates
- First-Time Freshmen Four-Year Graduation Rates
- % First-Time Freshmen from Underrepresented Groups Four-Year Graduation Rates
- First-Time Freshmen Six-Year Graduation Rates
- % First-Time Freshmen from Underrepresented Groups Six-Year Graduation Rates
- Number of Degrees Granted in STEM Fields
- Number of Health Related Degrees Granted
- Number of Degrees Granted
- % Degrees Granted to Students from Underrepresented Groups
- Graduate Education

2010 Enrollment Levels

	Urbana- Champaign	Chicago	Springfield
Total Enrollment	43,862	27,850	5,174
Undergraduate Enrollment	31,540	16,806	3,197
Freshmen Enrollment	6,929	3,204	294

Undergraduate Enrollment

Applications

**% of Applicants
Admitted**

Enrollment

**% of Admits
who Enroll**

**Student
Preparedness**

ACT Scores

Diversity of Students

Five Year Trend Comparison to Peers

Peer Group

University of Illinois at Urbana-Champaign

University of California - Berkeley
University of California - Los Angeles
University of California - San Diego
University of Michigan - Ann Arbor
University of North Carolina - Chapel Hill
University of Texas - Austin
University of Washington
University of Wisconsin - Madison
University of Virginia

Peer Group

University of Illinois at Chicago

Florida State University

Temple University*

University of Alabama at Birmingham

University of Arizona - Tucson

University of California - Irvine

University of Cincinnati

University of Colorado Denver*

University of New Mexico - Albuquerque

University of South Florida - Tampa

Virginia Commonwealth University

Wayne State University

*** State related research institutions**

Peer Group

University of Illinois at Springfield

Auburn University - Montgomery

Clark University*

College of Charleston

Georgia College and State University

Iona College*

Lake Superior State University

Marist College*

Northern Michigan University

Shippensburg University of Pennsylvania

The College at Brockport

Trinity University (San Antonio, TX)*

Union College (Schenectady, NY)*

University of South Dakota

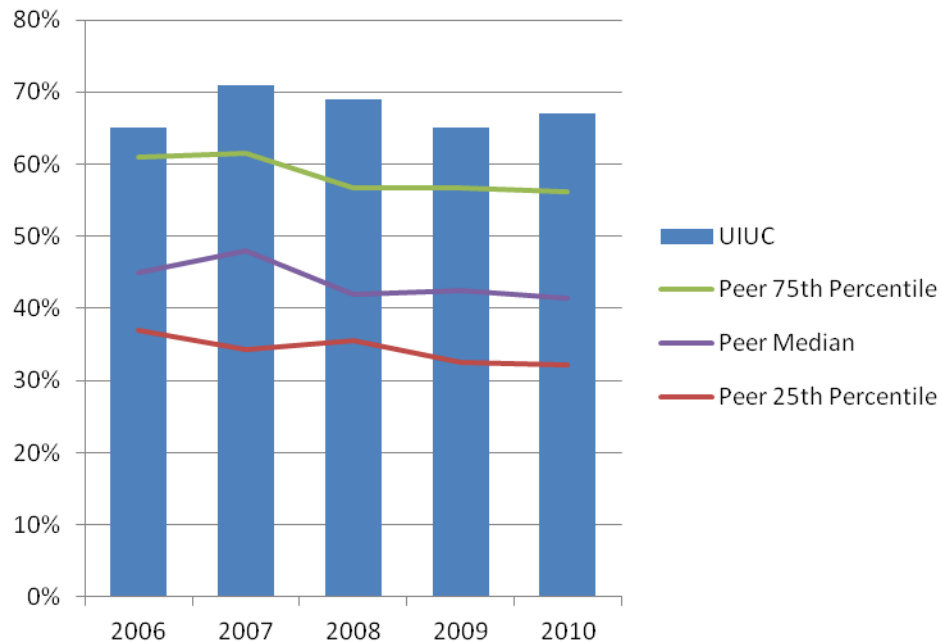
University of Wisconsin - Green Bay

*** Private Institution**

Percent First-Time Freshmen Applicants Admitted*

Fall 2006 – Fall 2010

University of Illinois at Urbana-Champaign



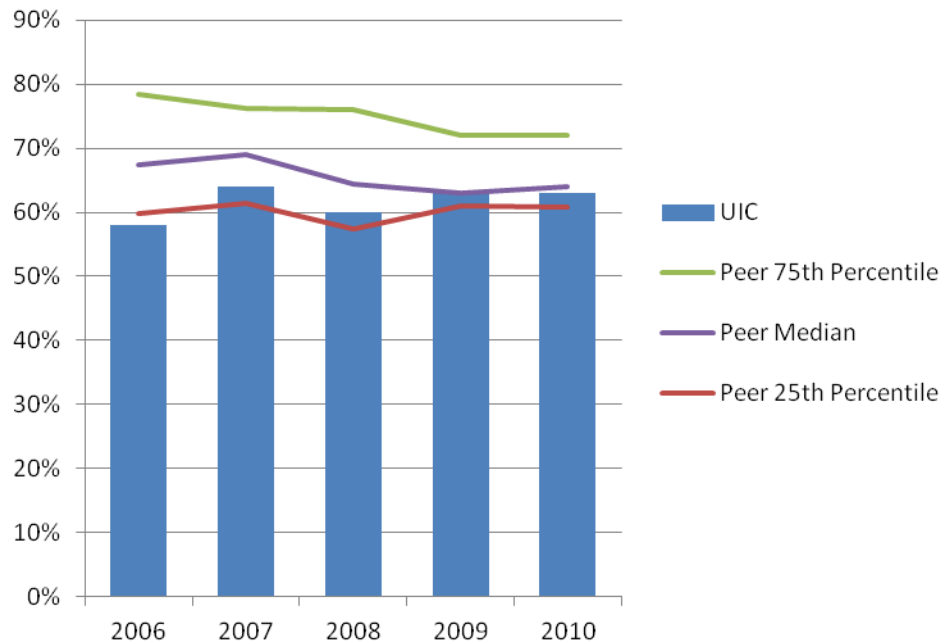
University of Illinois at Urbana-Champaign admits a higher percent of freshman applicants compared to the peer median.

* Percent Admitted = Percent of (total admits divided by total applicants).

Percent First-Time Freshmen Applicants Admitted*

Fall 2006 – Fall 2010

University of Illinois at Chicago



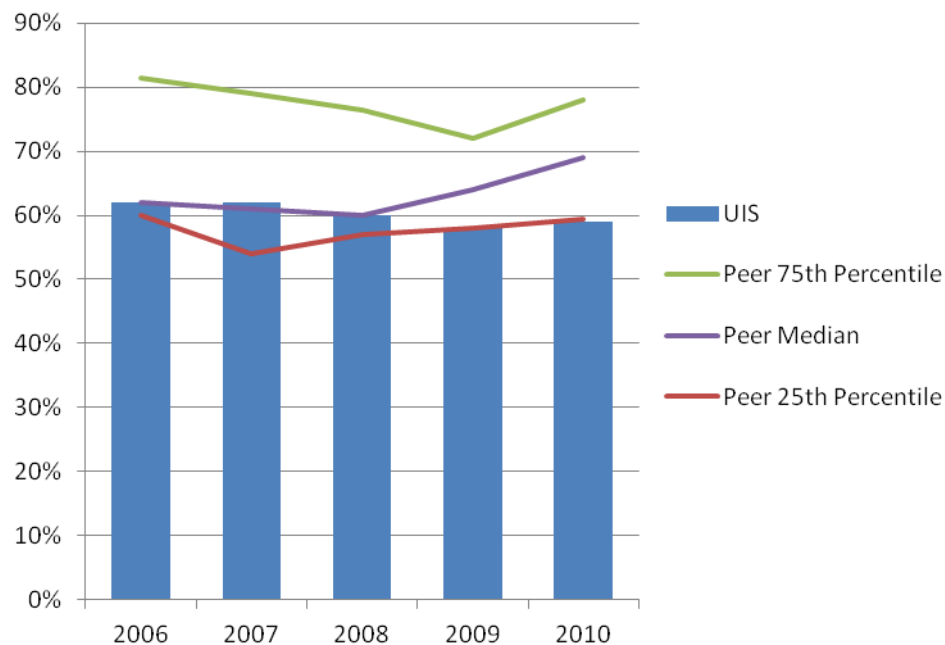
The percent of freshmen applicants admitted to University of Illinois at Chicago is currently at par with its peer median.

* Percent Admitted = Percent of (total admits divided by total applicants).

Percent First-Time Freshmen Applicants Admitted*

Fall 2006 – Fall 2010

University of Illinois at Springfield



University of Illinois at Springfield admits a lower percent of freshmen applicants compared to the peer median.

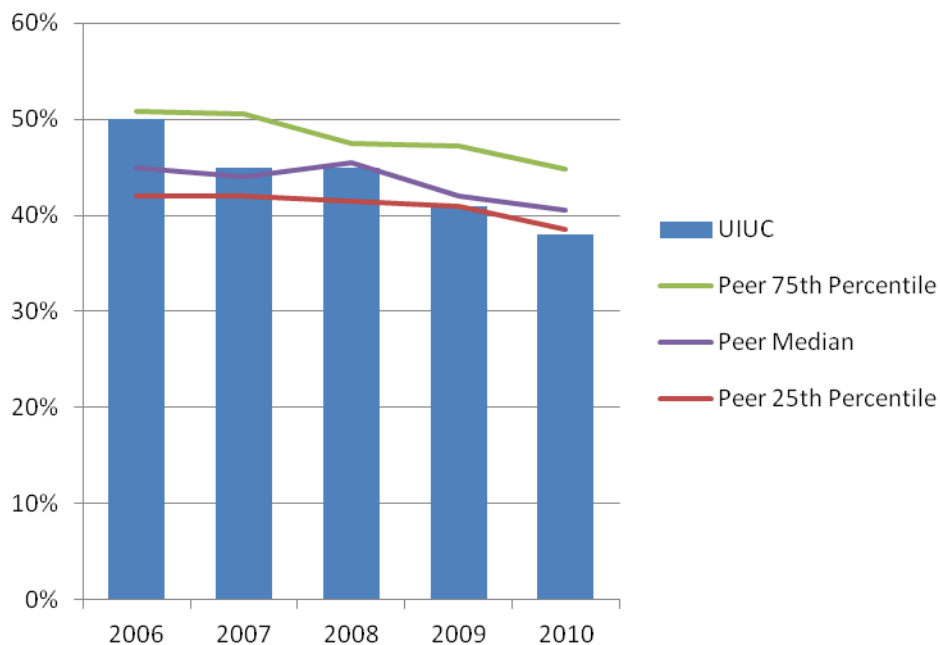
* Percent Admitted = Percent of (total admits divided by total applicants).

Enrollment Yield

Percent First-Time Freshmen Admissions Yield*

Fall 2006 – Fall 2010

University of Illinois at Urbana-Champaign



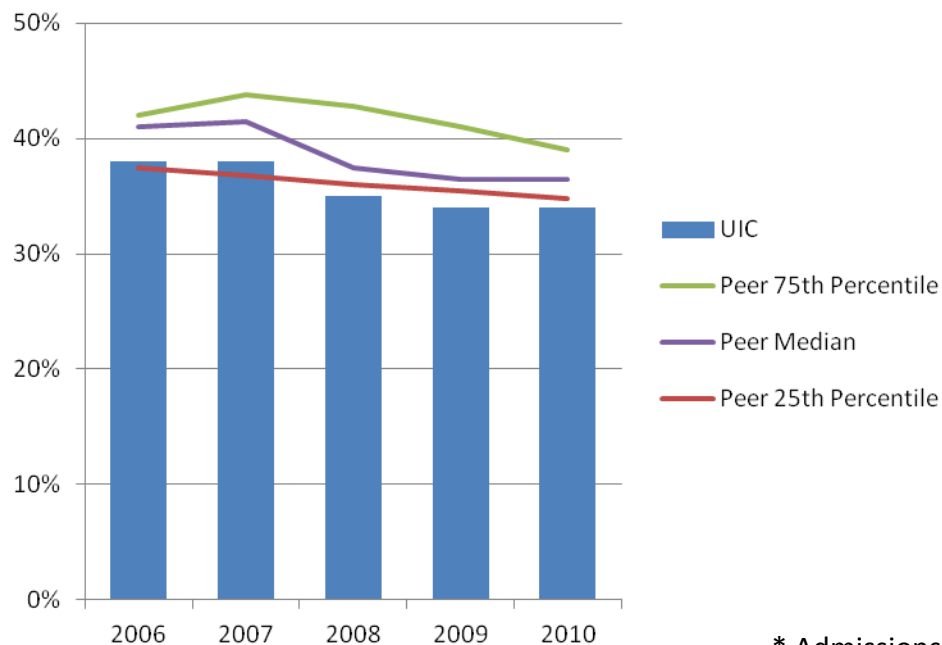
Admissions yield at the University of Illinois at Urbana-Champaign has fallen below the peer median.

* Admissions Yield = Percent of (total enrolled divided by total admits).

Percent First-Time Freshmen Admissions Yield*

Fall 2006 – Fall 2010

University of Illinois at Chicago



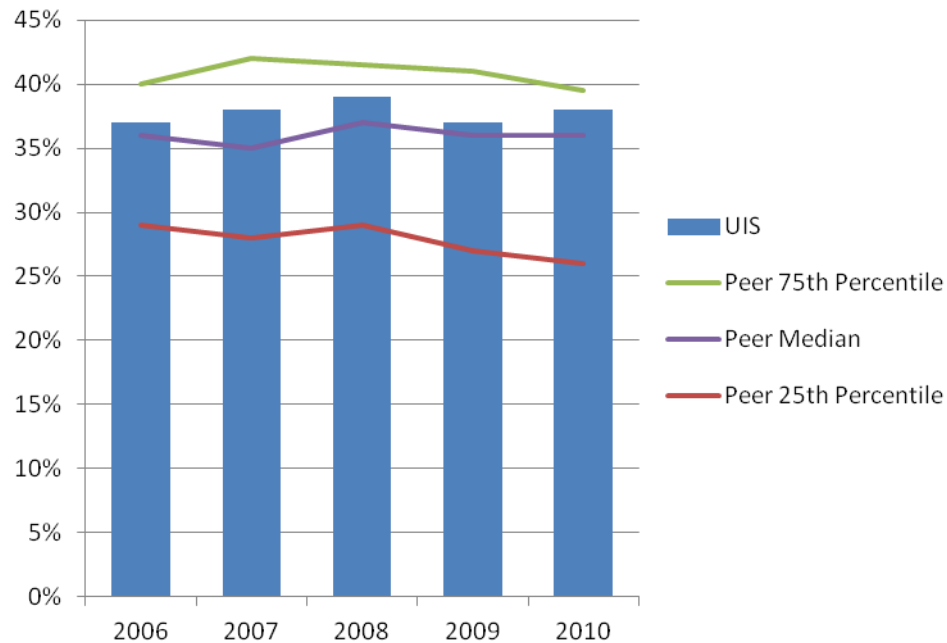
Admissions yield at the University of Illinois at Chicago is lower than its peer median.

* Admissions Yield = Percent of (total enrolled divided by total admits).

Percent First-Time Freshmen Admissions Yield*

Fall 2006 – Fall 2010

University of Illinois at Springfield



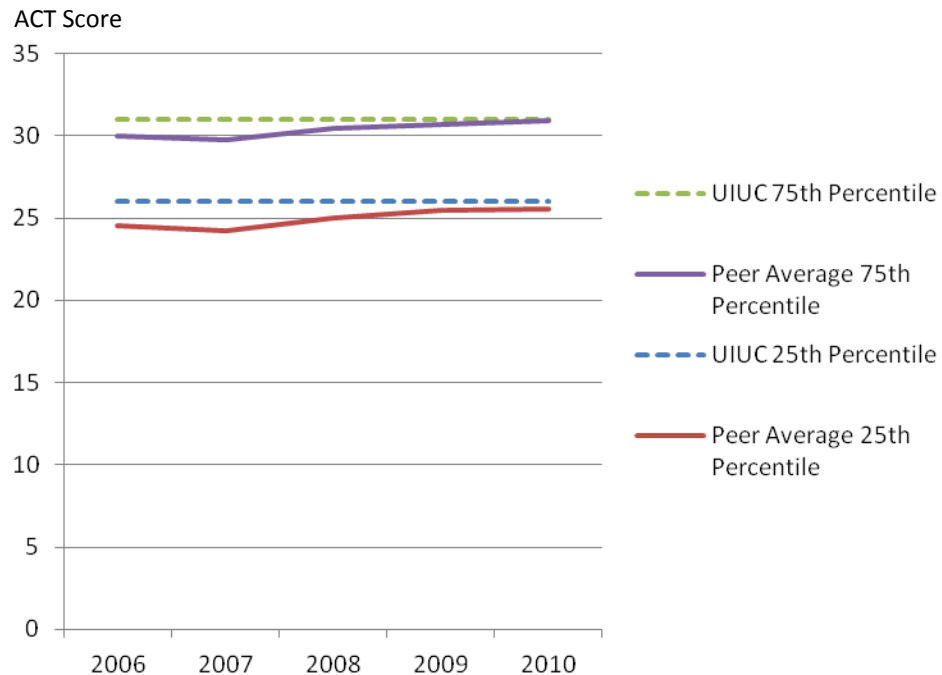
University of Illinois at Springfield has a higher admissions yield than its peer median.

* Admissions Yield = Percent of (total enrolled divided by total admits).

Student Preparedness

Entering Freshmen ACT Composite Scores 25th and 75th Percentile Fall 2006 – Fall 2010

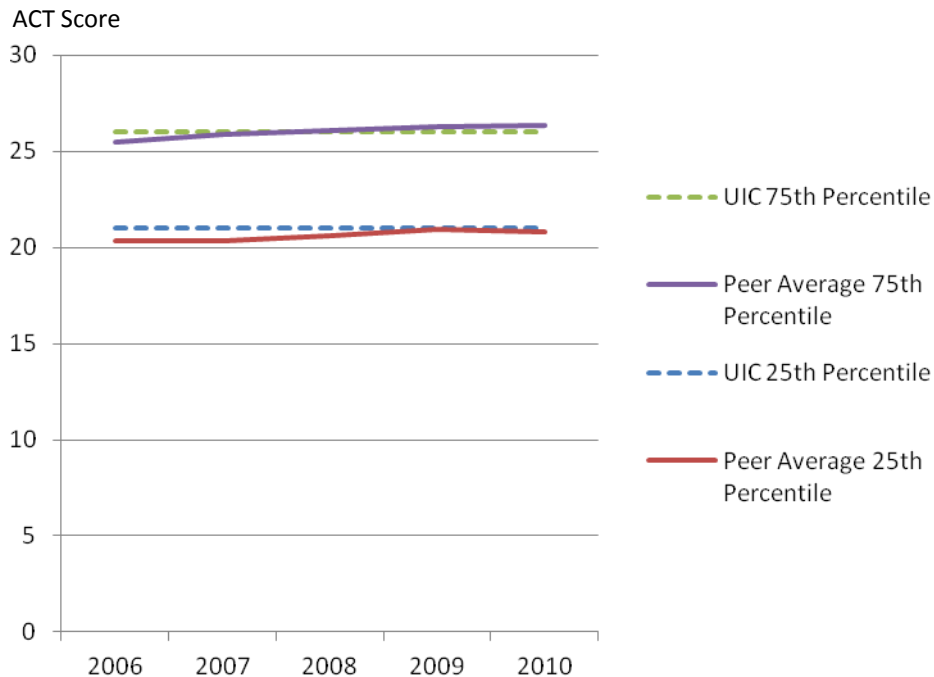
University of Illinois at Urbana-Champaign



ACT scores of incoming freshmen at the University of Illinois at Urbana-Champaign are on par with peers.

Entering Freshmen ACT Composite Scores 25th and 75th Percentile Fall 2006 – Fall 2010

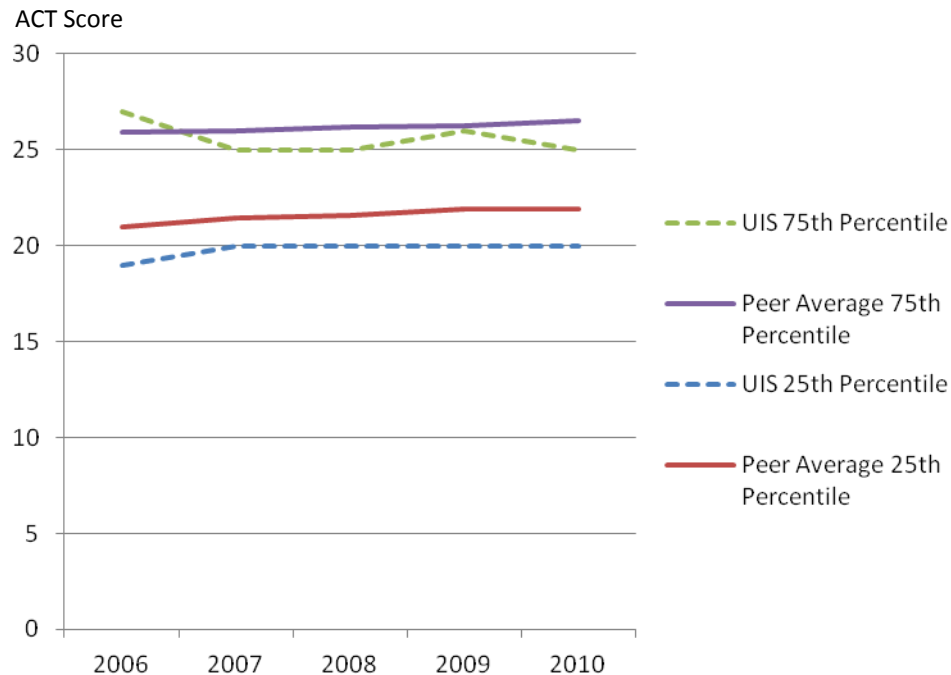
University of Illinois at Chicago



ACT scores of freshmen entering the University of Illinois at Chicago are on par with those at peer institutions.

Entering Freshmen ACT Composite Scores 25th and 75th Percentile Fall 2006 – Fall 2010

University of Illinois at Springfield



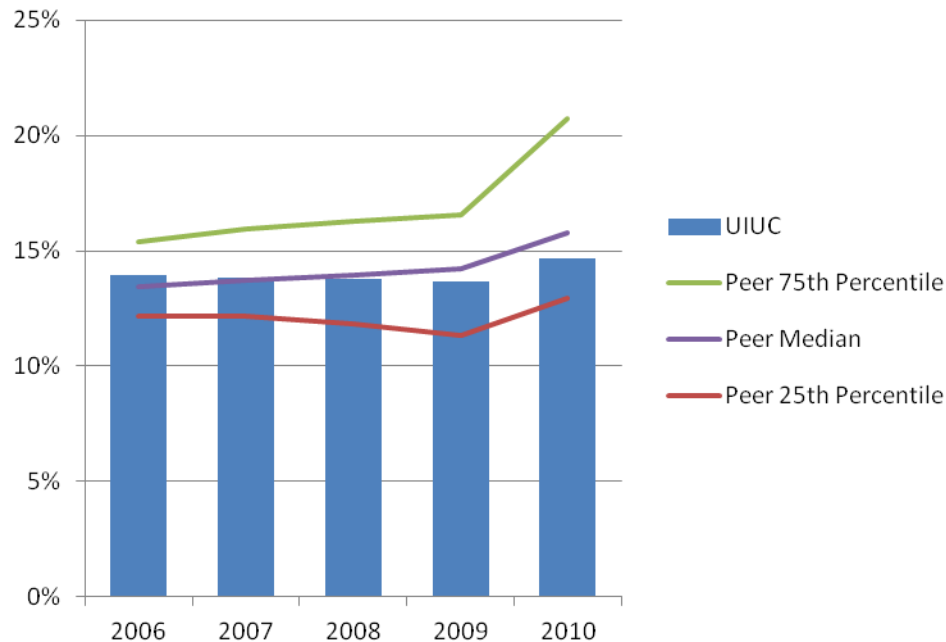
ACT scores of entering freshmen at the University of Illinois at Springfield are slightly below the peer averages.

Student Diversity

Percent Enrolled Undergraduate Students from Underrepresented* Groups

Fall 2006 – Fall 2010

University of Illinois at Urbana-Champaign

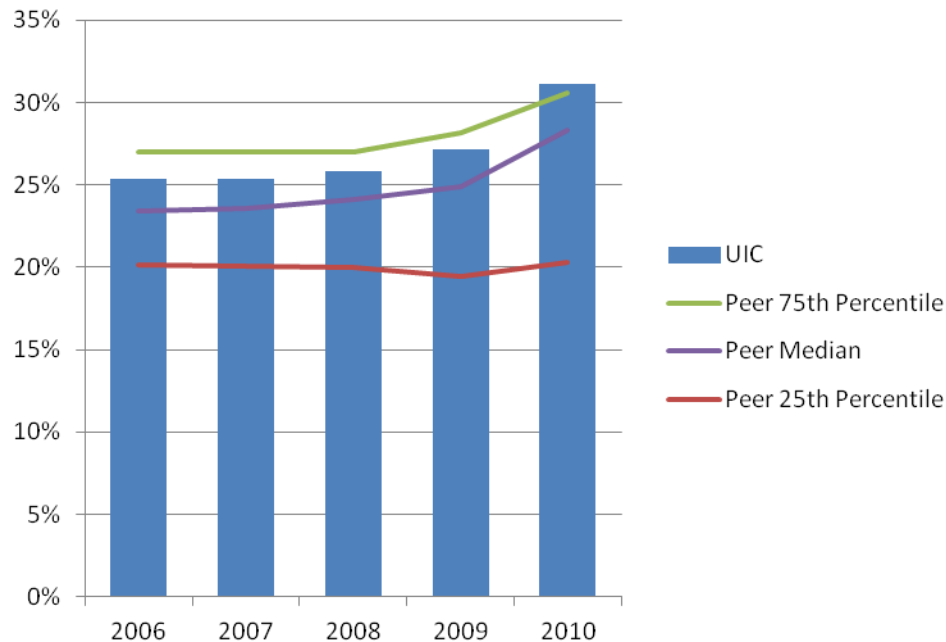


The percent of undergraduate students from underrepresented groups at the University of Illinois at Urbana-Champaign is about the same as the peer median.

* Includes Black, Hispanic, American Indian, Native Hawaiian/Other Pacific Islander, and multi-racial students.

Percent Enrolled Undergraduate Students from Underrepresented* Groups Fall 2006 – Fall 2010

University of Illinois at Chicago

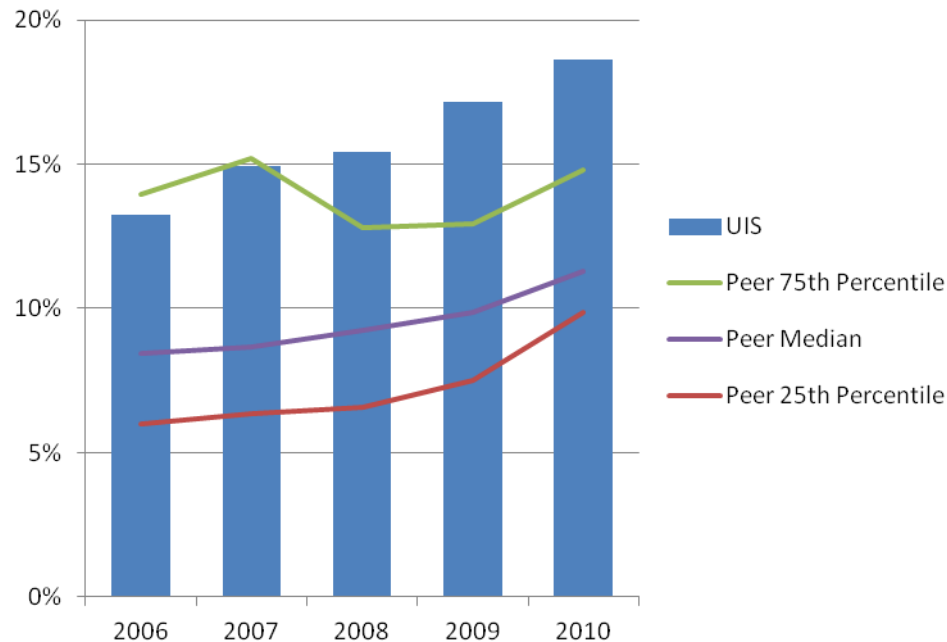


The percent of undergraduate students from underrepresented groups at the University of Illinois at Chicago is higher than the peer median.

* Includes Black, Hispanic, American Indian, Native Hawaiian/Other Pacific Islander, and multi-racial students.

Percent Enrolled Undergraduate Students from Underrepresented* Groups Fall 2006 – Fall 2010

University of Illinois at Springfield

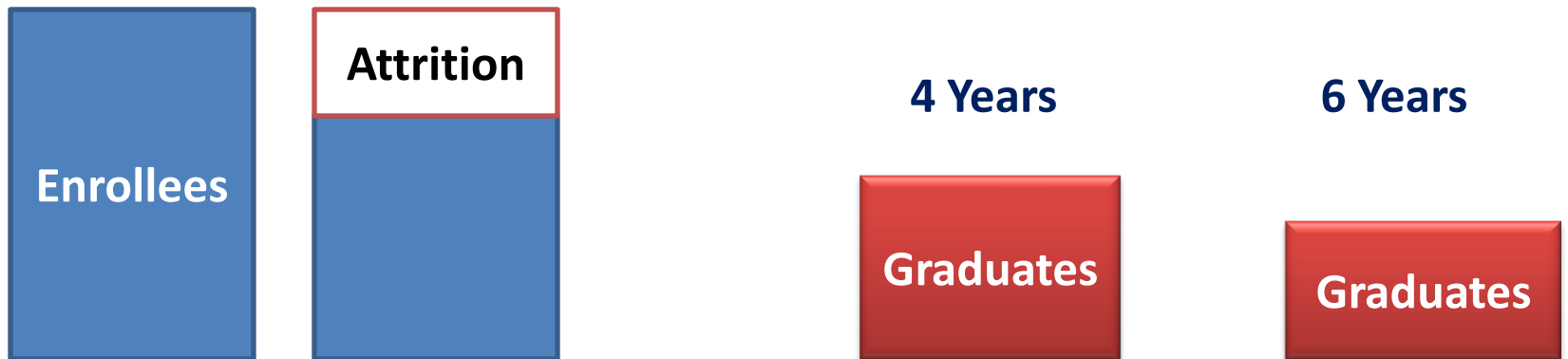


The percent of undergraduate students from underrepresented groups at the University of Illinois at Springfield is higher than the peer median.

* Includes Black, Hispanic, American Indian, Native Hawaiian/Other Pacific Islander, and multi-racial students.

Student Outcomes

Student Outcomes



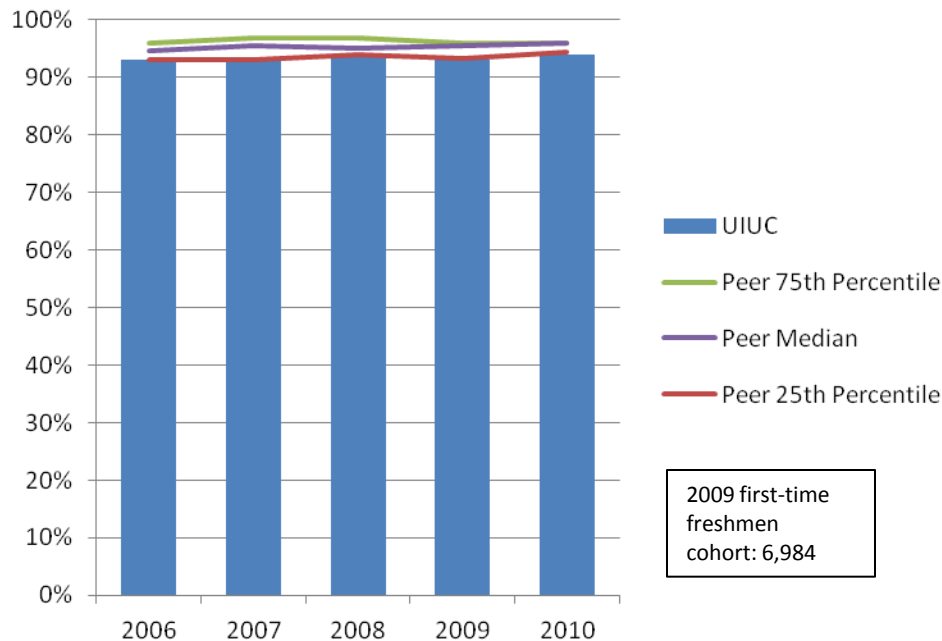
Student Outcome Metrics

- Freshmen Retention
- Four Year and Six Year Graduation Rates
- Degrees in STEM Fields

Freshman to Sophomore One-Year Retention Rates

Fall 2006 – Fall 2010

University of Illinois at Urbana-Champaign

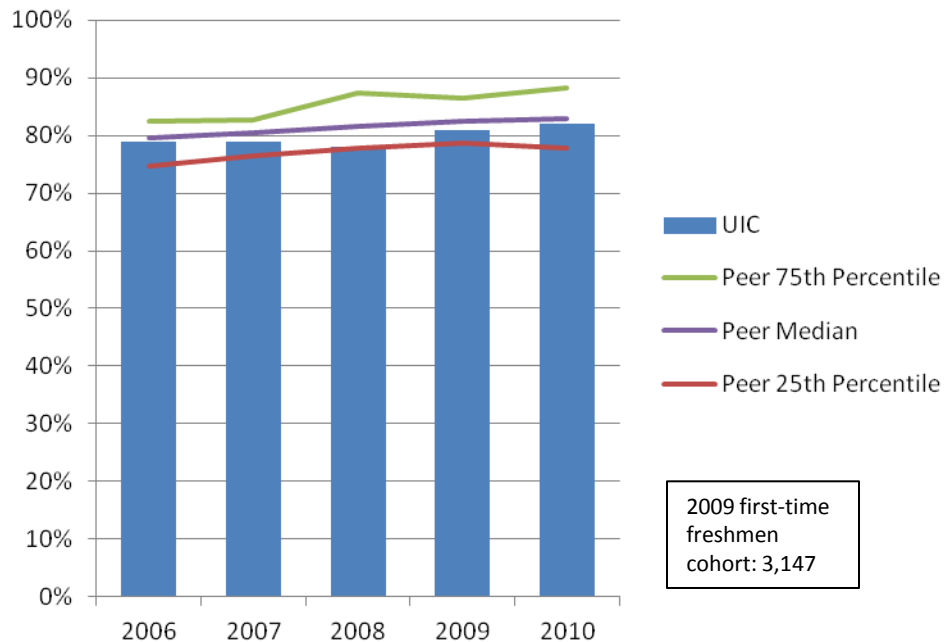


The freshmen retention rate at the University of Illinois at Urbana-Champaign is high and similar to its peers.

Freshman to Sophomore One-Year Retention Rates

Fall 2006 – Fall 2010

University of Illinois at Chicago

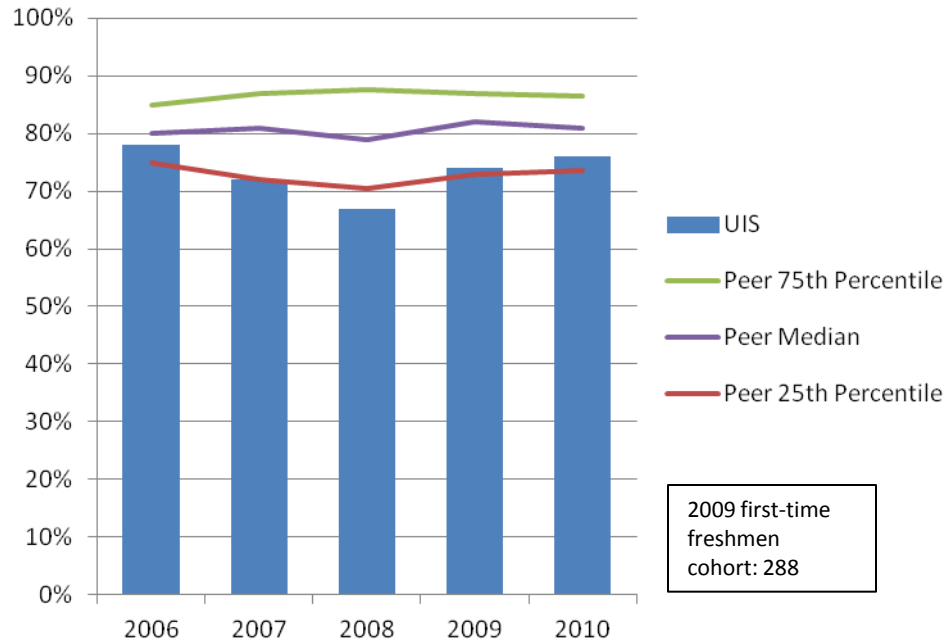


The freshman retention rate at the University of Illinois at Chicago is about the same as the peer median.

Freshman to Sophomore One-Year Retention Rates

Fall 2006 – Fall 2010

University of Illinois at Springfield



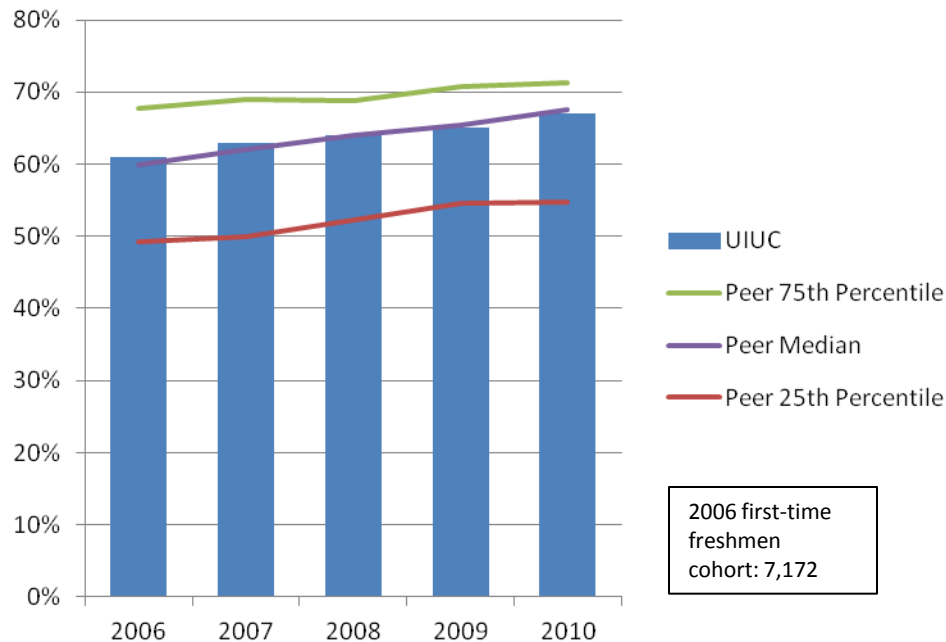
Although improving since 2008, freshmen retention rate at University of Illinois at Springfield is lower than the peer median.

Graduation Rates

First-Time Freshmen Four-Year Graduation Rates

Fall 2006 – Fall 2010

University of Illinois at Urbana-Champaign

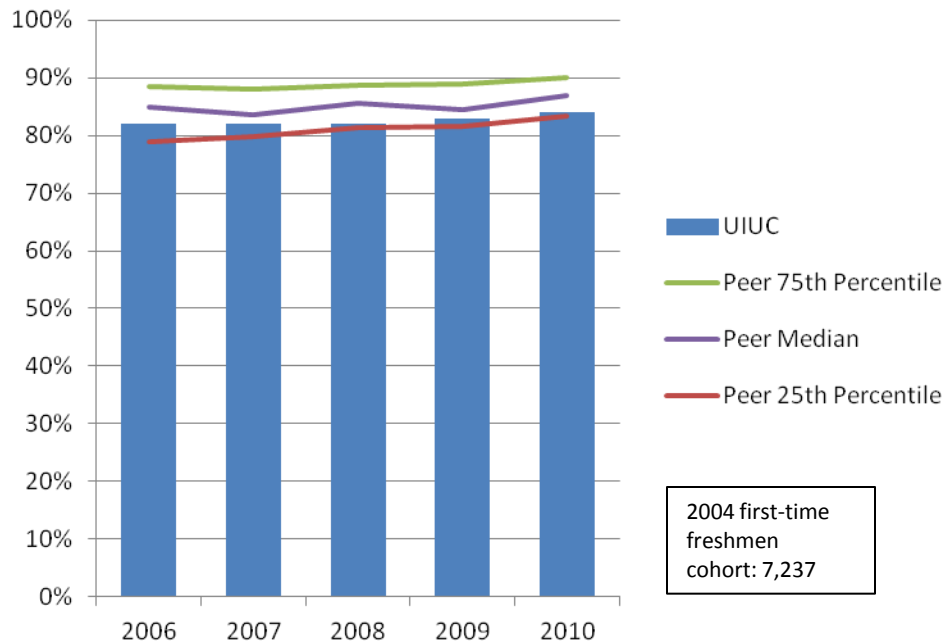


The four year graduation rate for undergraduates at the University of Illinois at Urbana-Champaign is similar to the peer median.

First-Time Freshmen Six-Year Graduation Rates

Fall 2006 – Fall 2010

University of Illinois at Urbana-Champaign

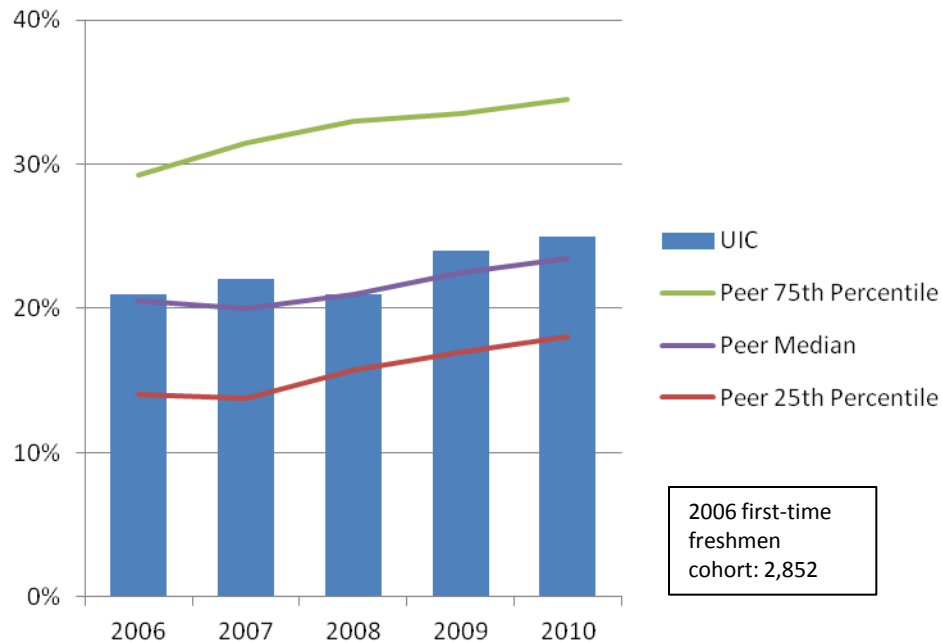


The six year graduation rate at the University of Illinois at Urbana-Champaign has been consistently above 80% but is slightly lower than the peer median.

First-Time Freshmen Four-Year Graduation Rates

Fall 2006 – Fall 2010

University of Illinois at Chicago

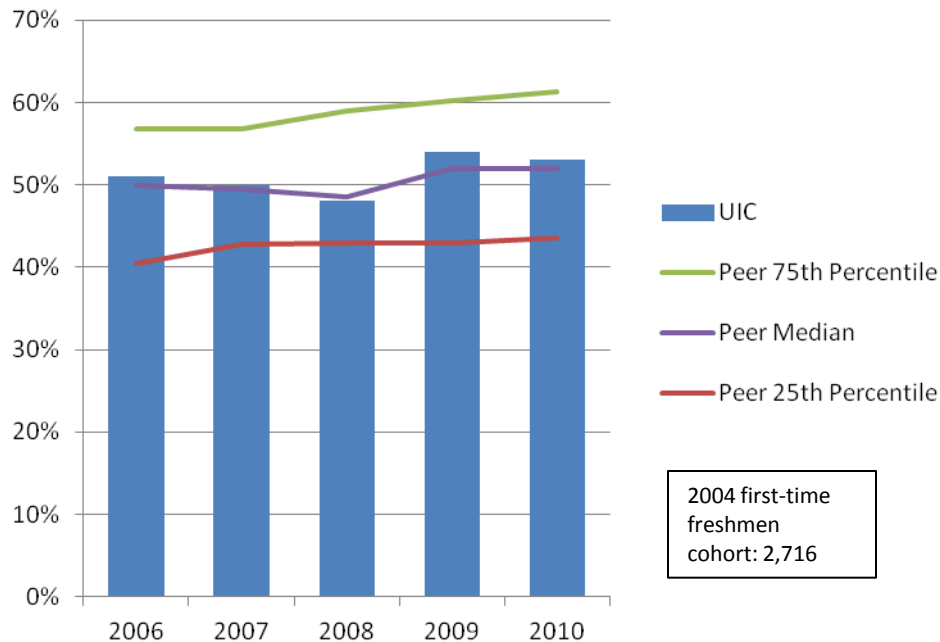


The four year graduation rate of undergraduate students at the University of Illinois at Chicago is slightly higher than the peer median.

First-Time Freshmen Six-Year Graduation Rates

Fall 2006 – Fall 2010

University of Illinois at Chicago

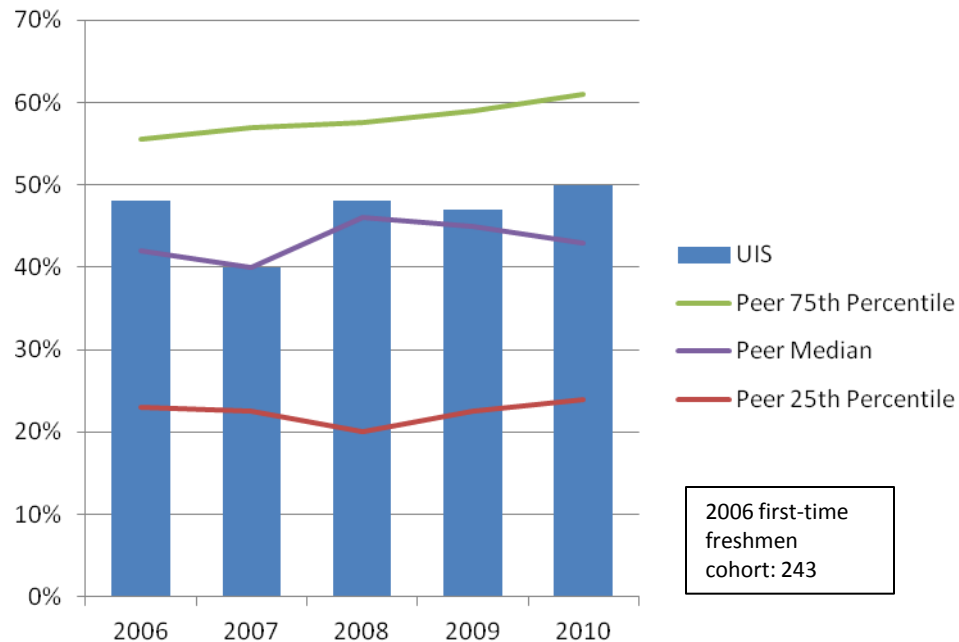


The six year graduation rate of undergraduate students at the University of Illinois at Chicago is on par with the peer median.

First-Time Freshmen Four-Year Graduation Rates

Fall 2006 – Fall 2010

University of Illinois at Springfield

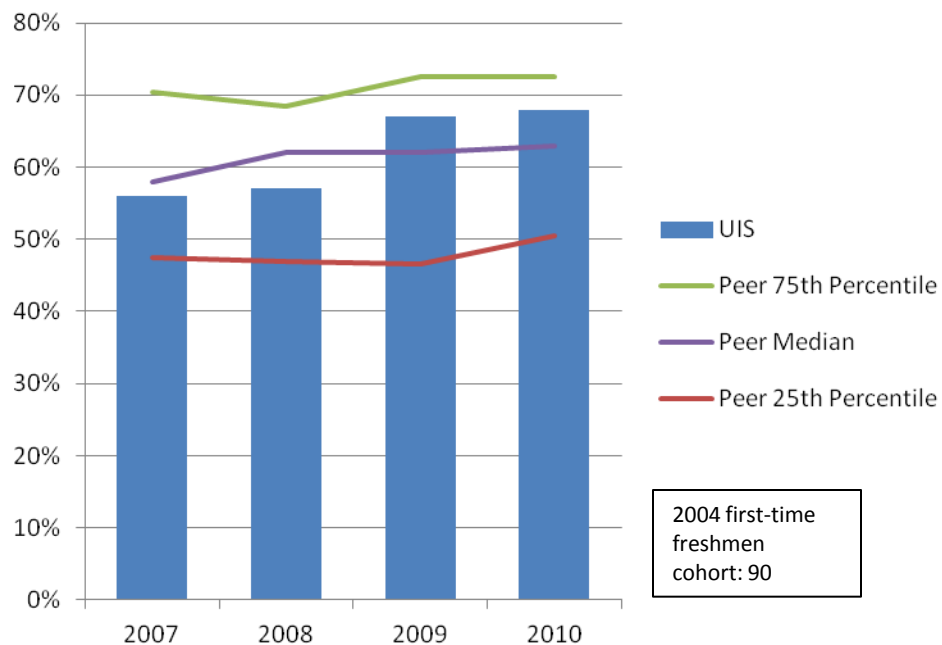


Compared to its peer median the University of Illinois at Springfield graduates a higher percent of undergraduate students within four years.

First-Time Freshmen Six-Year Graduation Rates

Fall 2006 – Fall 2010

University of Illinois at Springfield

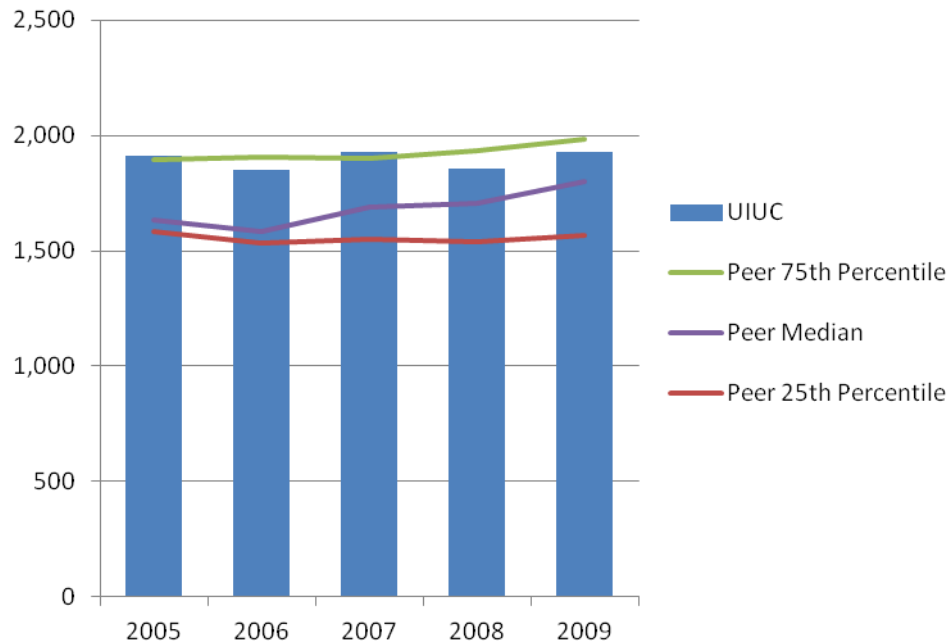


Compared to its peer median the University of Illinois at Springfield graduates a higher percent of students within six years.

Degrees in STEM Fields

Number of Degrees Granted in STEM* Fields - Bachelor's FY 2005 – FY 2009

University of Illinois at Urbana-Champaign

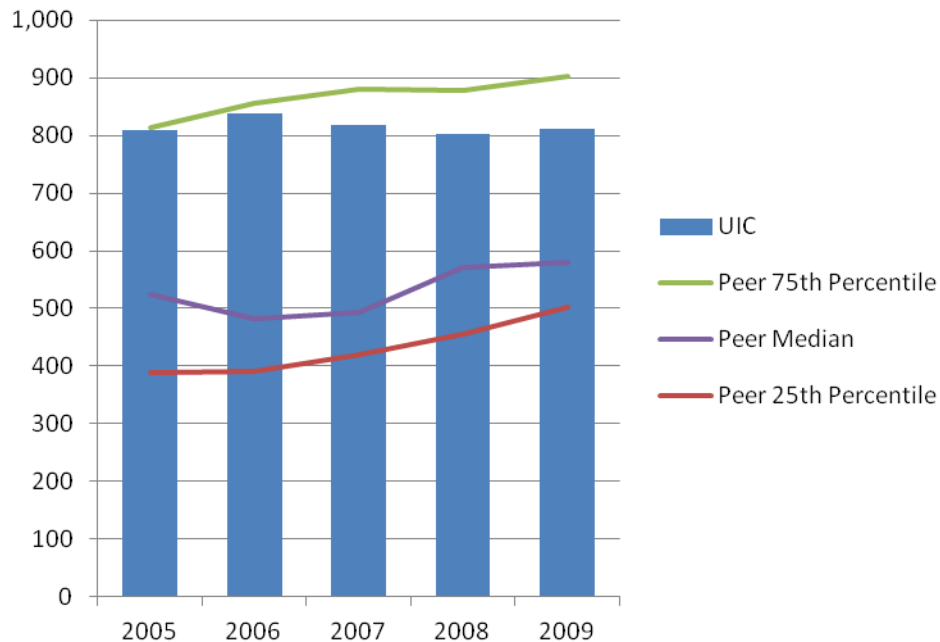


University of Illinois at Urbana-Champaign grants more undergraduate degrees in STEM fields than its peer median.

* Science, Technology, Engineering, and Mathematics.

Number of Degrees Granted in STEM* Fields - Bachelor's FY 2005 – FY 2009

University of Illinois at Chicago



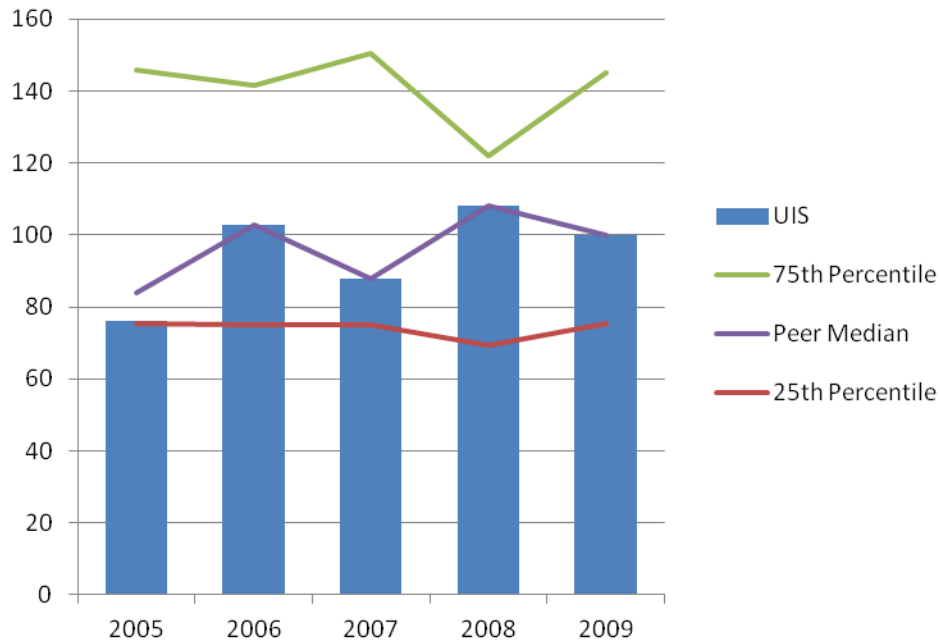
University of Illinois at Chicago grants more undergraduate degrees in STEM fields than its peer median.

* Science, Technology, Engineering, and Mathematics.

Number of Degrees Granted in STEM* Fields - Bachelor's

FY 2005 – FY 2009

University of Illinois at Springfield



University of Illinois at Springfield grants about as many undergraduate degrees in STEM fields as its peer median.

* Science, Technology, Engineering, and Mathematics.

Thank You