

USC Report

JORGE VILLEGAS

CHAIR, UNIVERSITY SENATES CONFERENCE

JULY 24, 2014

How can we **maximize** the **impact** of our university on **people's lives**?

```
graph TD; A[How can we maximize the impact of our university on people's lives?] --- B[What is the University of Illinois?]; A --- C[Why come and stay at our university?];
```

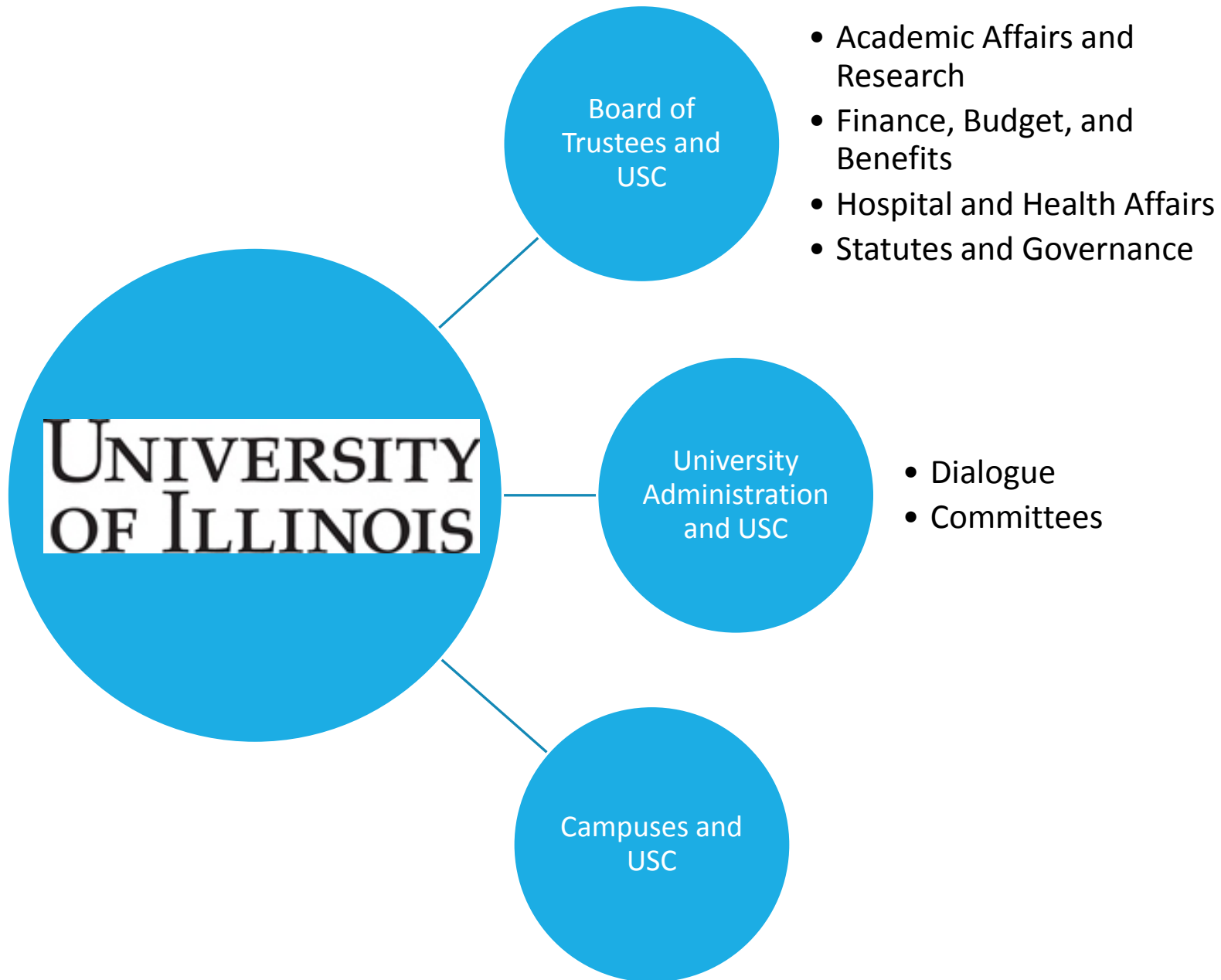
What is the University of Illinois?

Why come and stay at our university?

Answers & Implementation

Collaboration

Excellence



Answers & Implementation

Collaboration

Excellence

USC Statement on Excellence

“Inasmuch as the University of Illinois, through its three campuses, is the leading public university in the state in each of these categories, **the successes of each of the three campuses are the successes of the University and of the state of Illinois**, just as threats to the well-being of any of the campuses constitute a threat to the University and to the state”.

“**Excellent campuses ensure the excellence of the University of Illinois**. The University Senates Conference affirms that the successes of each of the three campuses benefit the entire state as well as the University of Illinois, our professional home”.

Thanks

Board of Trustees members

- Susan Kies

President Easter and his team

VPs Pierre, Schook, Knorr and their teams

USC members

- Don Chambers, Chair: 2014-2015
- Connie Sailor

Senate chairs and staff