

# University of Illinois at Springfield

## Dashboard Indicators

ADMISSIONS, STUDENT QUALIFICATIONS, TRANSFER ENROLLMENTS UPDATES BY:  
UNIVERSITY OFFICE FOR PLANNING AND BUDGETING

MAY 20, 2014

PRESENTED BY:

CHANCELLOR SUSAN KOCH

JULY 24, 2014

Reported to the Board of Trustees  
July 24, 2014

# Peer Groups



## **University of Illinois at Springfield**

Auburn University - Montgomery

Clark University\*

College of Charleston

Georgia College and State University

Iona College\*

Lake Superior State University

Marist College\*

Northern Michigan University

Shippensburg University of Pennsylvania

State University of New York at Brockport

Trinity University (San Antonio, TX)\*

Union College (Schenectady, NY)\*

University of South Dakota

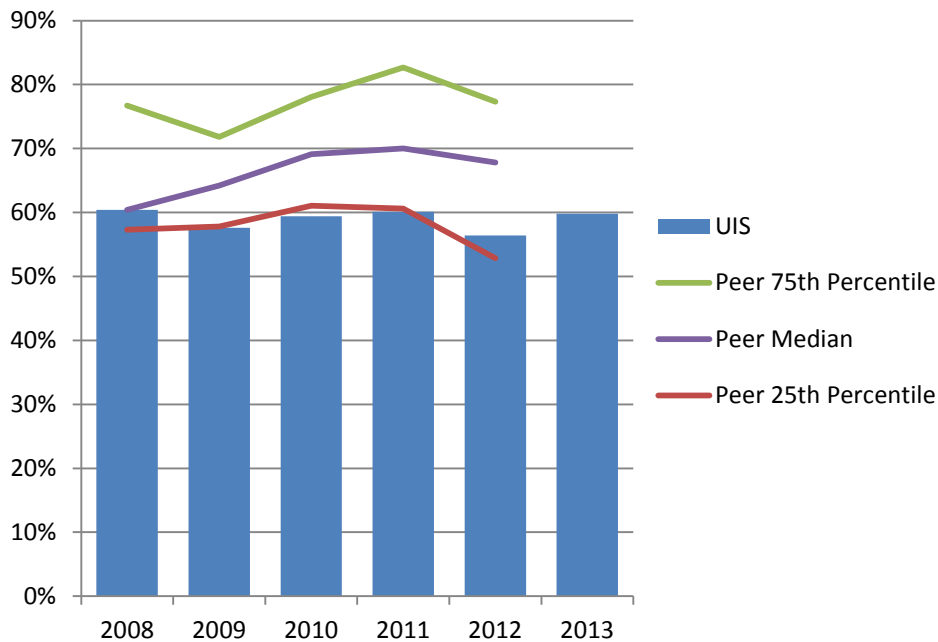
University of Wisconsin - Green Bay

\* Private Institution

# Admissions, Student Qualifications and Transfer Enrollments



# Percent First-Time Freshmen Applicants Admitted\* Fall 2008 – Fall 2013

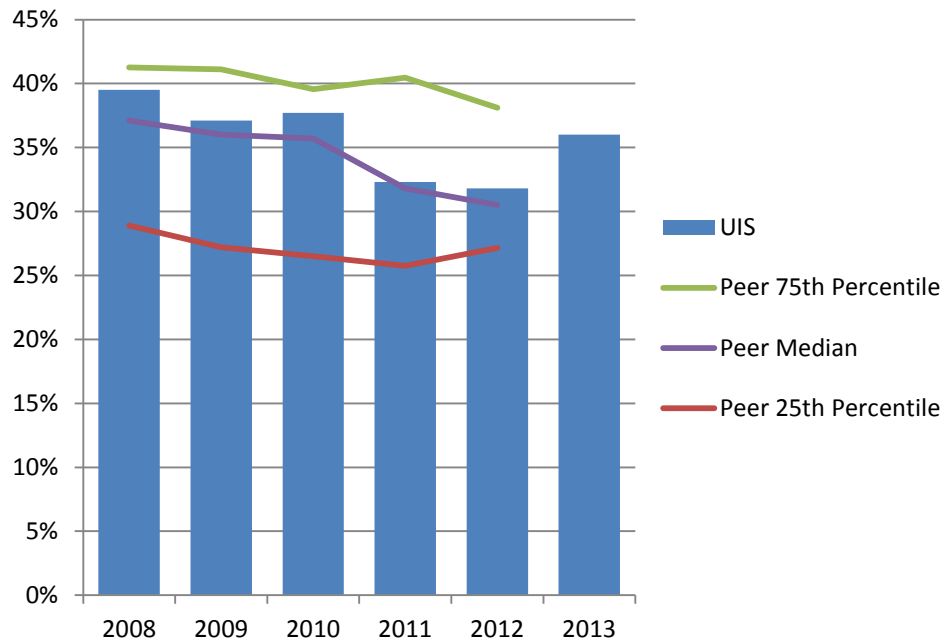


University of Illinois at Springfield admits a lower percent of freshmen applicants compared to the peer median.

\* Percent Admitted = Percent of (total admits divided by total applicants).

# Percent First-Time Freshmen Admissions Yield\*

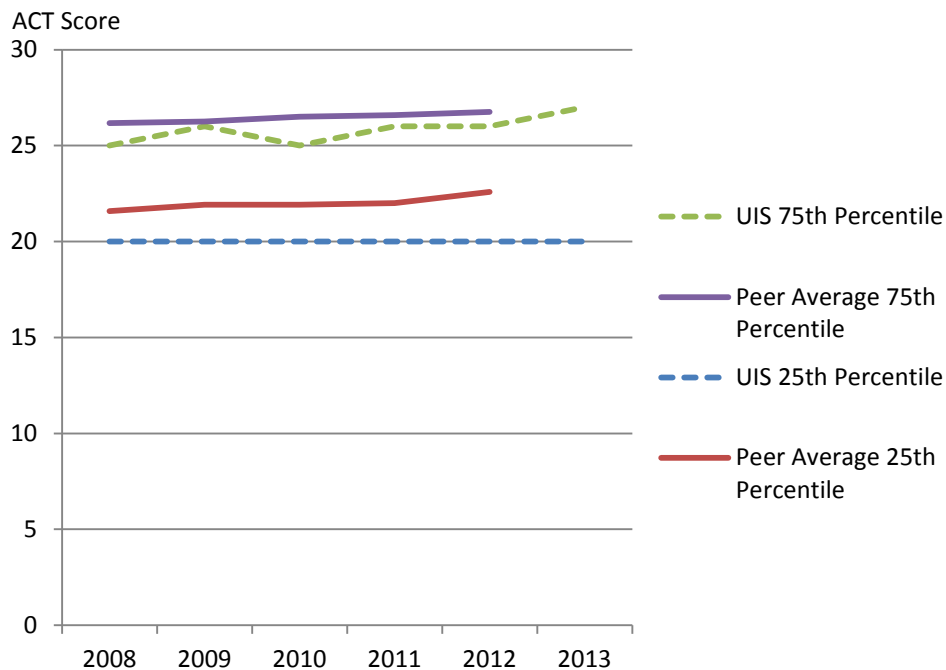
## Fall 2008 – Fall 2013



University of Illinois at Springfield has an admissions yield similar to the peer median.

\* Admissions Yield = Percent of (total enrolled divided by total admits).

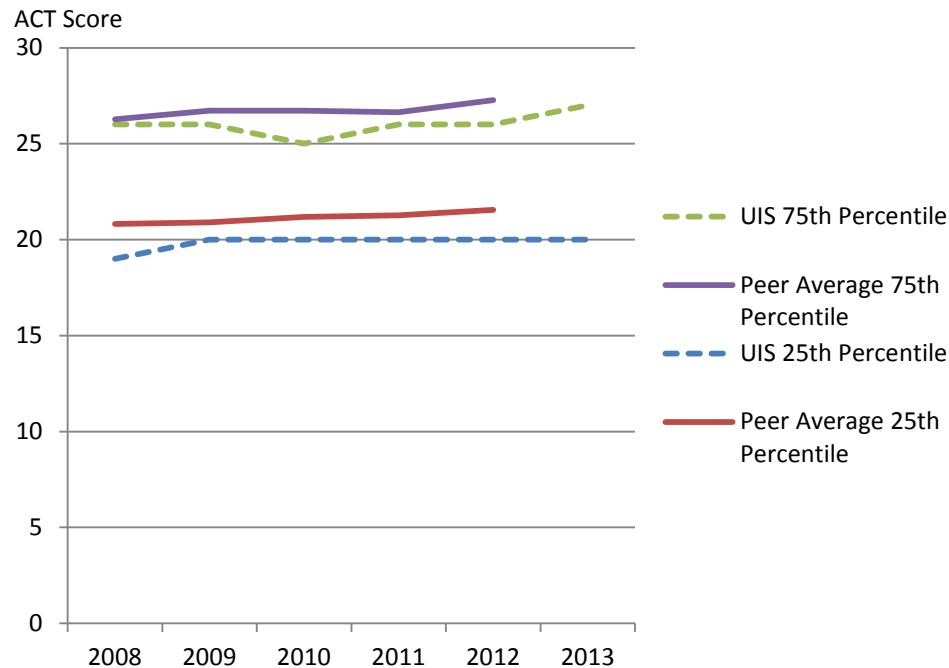
# Entering Freshmen ACT Composite Scores 25<sup>th</sup> and 75<sup>th</sup> Percentile Fall 2008 – Fall 2013



The 75<sup>th</sup> percentile ACT score of entering freshmen at the University of Illinois at Springfield is on par with the peer averages; the 25<sup>th</sup> percentile ACT score is slightly below the peer averages.

Note: Excludes Iona College and Shippensburg University of Pennsylvania due to lack of available data. Fewer students at peer institutions submit ACT scores.

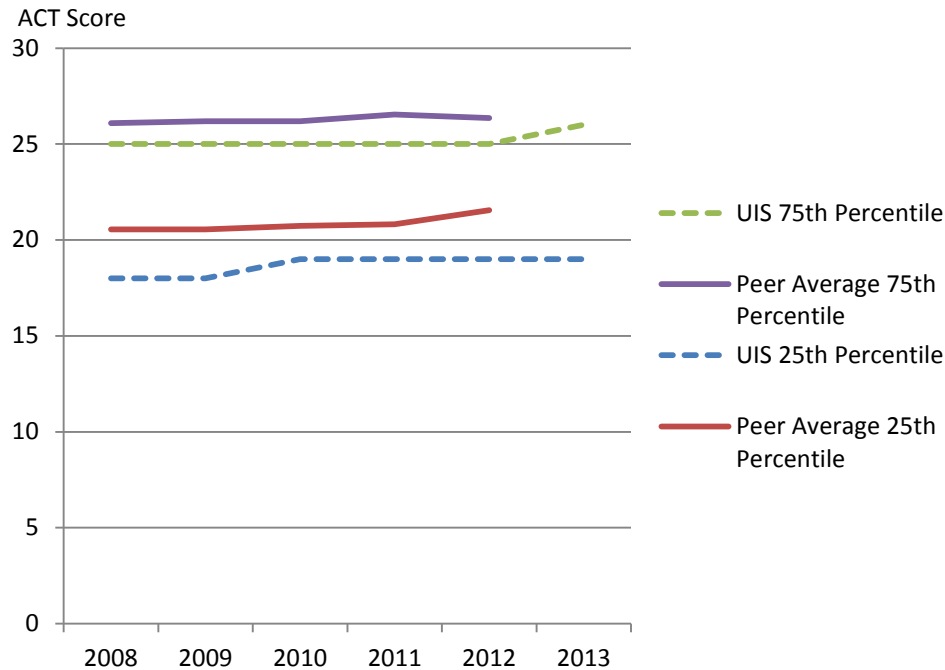
# Entering Freshmen ACT English Score 25<sup>th</sup> and 75<sup>th</sup> Percentile Fall 2008 – Fall 2013



ACT English scores of entering freshmen at the University of Illinois at Springfield are slightly below the peer averages.

Note: Excludes Iona College, Shippensburg University of Pennsylvania, and Marist College due to lack of available data. Fewer students at peer institutions submit ACT scores.

# Entering Freshmen ACT Math Score 25<sup>th</sup> and 75<sup>th</sup> Percentile Fall 2008 – Fall 2013



ACT Math scores of entering freshmen at the University of Illinois at Springfield are slightly below the peer averages.

Note: Excludes Iona College, Shippensburg University of Pennsylvania, and Marist College due to lack of available data. Fewer students at peer institutions submit ACT scores.

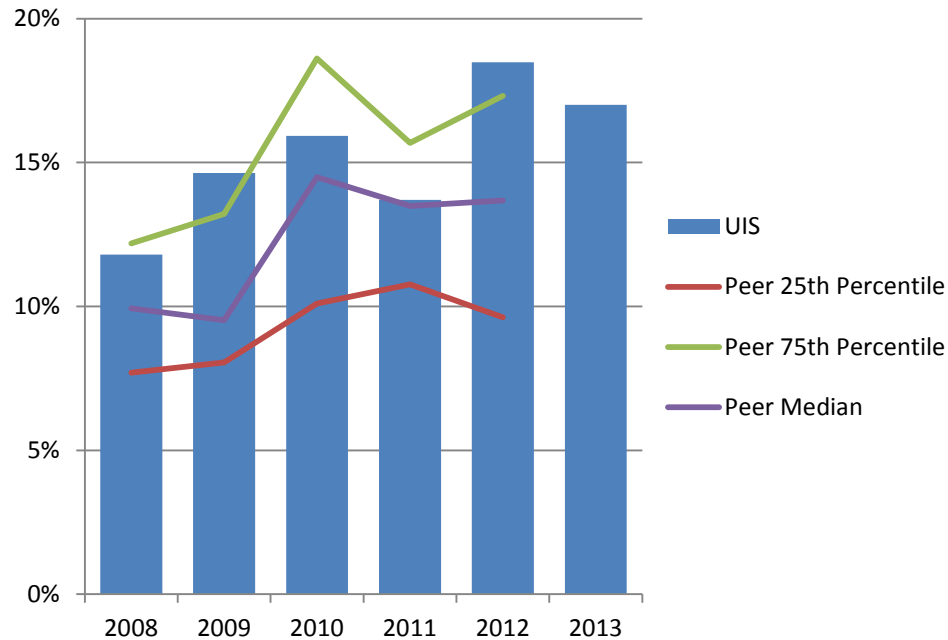


# University of Illinois at Springfield and Peer Institutions First-Time Transfers Enrollment Fall 2008 – Fall 2013

	<u>2008</u>	<u>2009</u>	<u>2010</u>	<u>2011</u>	<u>2012</u>	<u>2013</u>
<b>University of Illinois at Springfield</b>	<b>661</b>	<b>649</b>	<b>653</b>	<b>606</b>	<b>637</b>	<b>620</b>
Auburn University at Montgomery	325	333	399	358	299	
Clark University	59	32	56	70	41	
College of Charleston	707	724	805	756	731	
Georgia College and State University	416	455	419	402	345	
Iona College	103	105	97	103	89	
Lake Superior State University	270	225	228	297	236	
Marist College	312	303	290	167	188	
Northern Michigan University	431	523	570	577	545	
Shippensburg University of Pennsylvania	371	458	447	414	365	
The College at Brockport	919	961	1,042	961	971	
Trinity University (San Antonio, TX)	20	28	23	21	24	
Union College (Schenectady, NY)	33	21	26	28	20	
University of South Dakota	586	701	772	820	715	
University of Wisconsin-Green Bay	587	592	586	628	648	

Data Source: IPEDS Data Center.

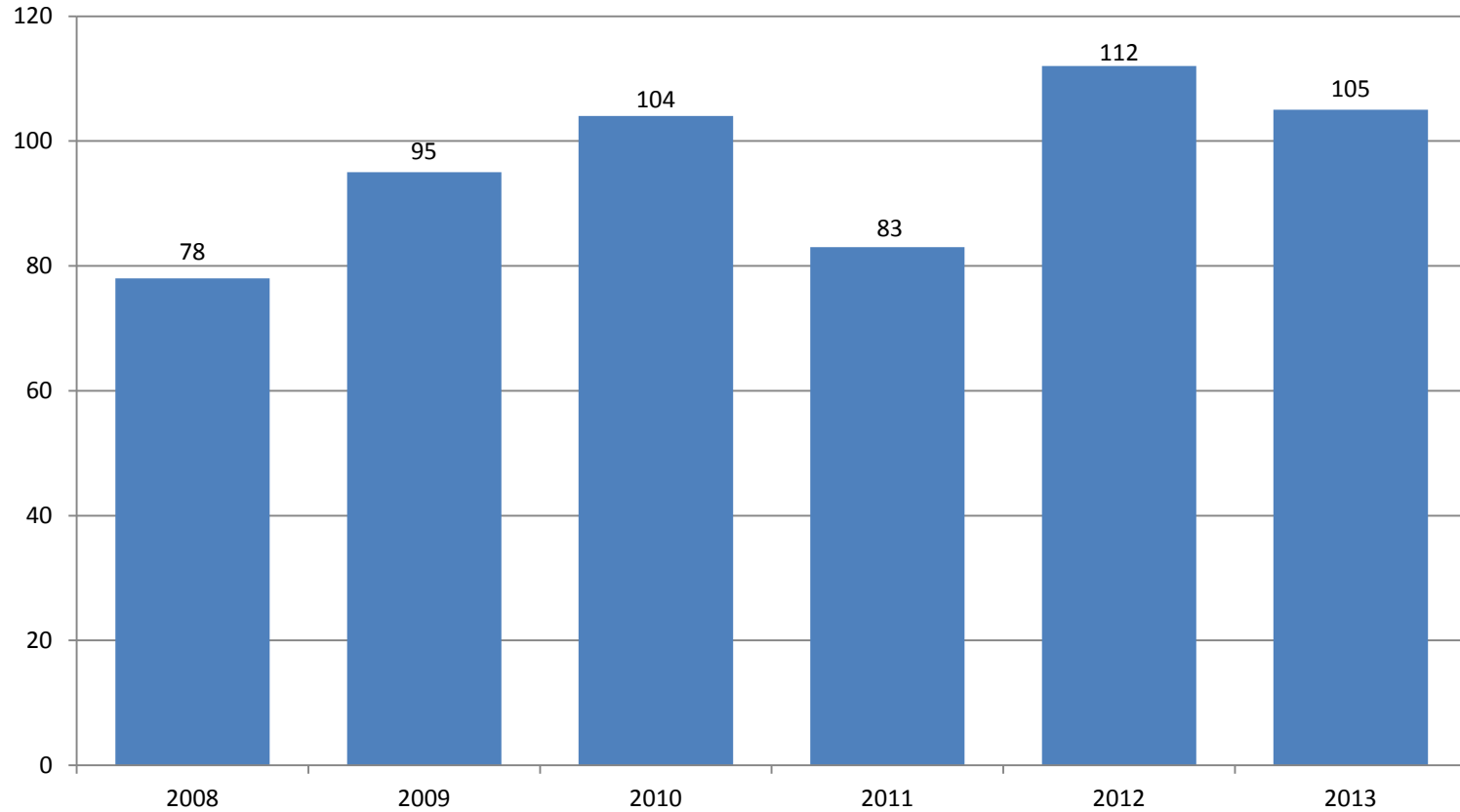
# Percent First-Time Transfers from Underrepresented\* Groups Fall 2008 – Fall 2013



The percent of first-time transfers from underrepresented groups at the University of Illinois at Springfield is higher than its peer median.

\* Includes Black, Hispanic, American Indian, Native Hawaiian/Other Pacific Islander, and multi-racial students.

# Number of First-Time Transfers from Underrepresented\* Groups Fall 2008 – Fall 2013



\* Includes Black, Hispanic, American Indian, Native Hawaiian/Other Pacific Islander, and multi-racial students.

# Admissions, Student Qualifications and Transfer Enrollments: Goals



- Campus Goal
- Campus Goal

# Action Items



- Campus action item
- ★ Campus action item

- time-frame (1-2 year)
- ★ time-frame (3-5 year)

# Questions?

