

University of Illinois at Chicago



Performance Metric Report

ADMISSIONS, STUDENT QUALIFICATIONS, AND
TRANSFER ENROLLMENTS UPDATE

REPORTED BY:
CHANCELLOR MICHAEL D. AMIRIDIS
MAY 11, 2017

Reported to the Board of Trustees
May 11, 2017

PEER GROUPS

Peer Group

SUNY, University at Buffalo
University of Alabama at Birmingham
University of Cincinnati
University of Connecticut
University of Louisville
University of South Florida - Tampa
University of Utah
Virginia Commonwealth University

Aspirational Peer Group

Rutgers University
University of Arizona
University of California – Los Angeles
University of California – Irvine
University of Washington

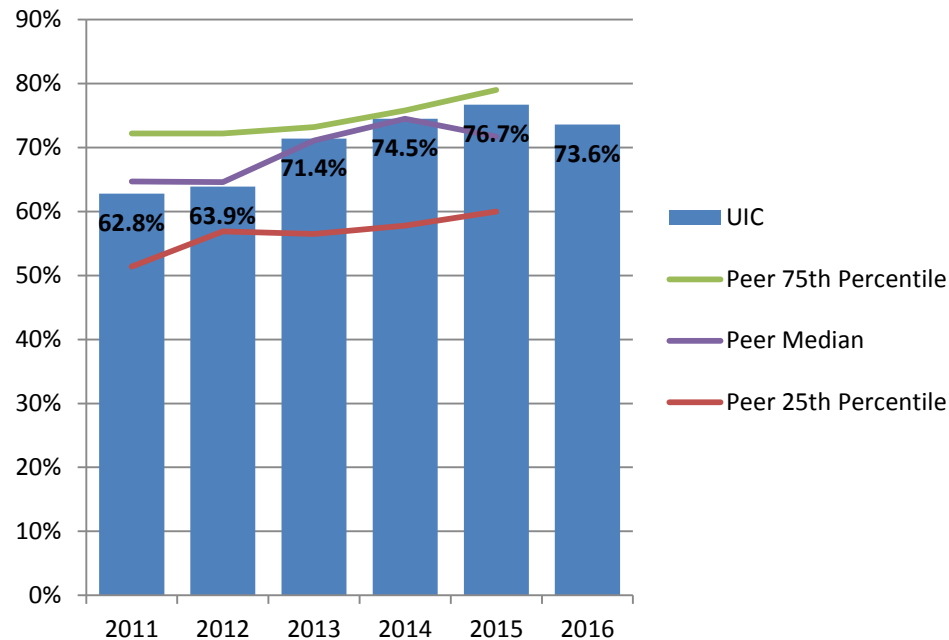
ADMISSIONS



PERCENT FIRST-TIME FRESHMEN APPLICANTS ADMITTED*

FALL 2011 – FALL 2016

The percent of freshmen applicants admitted to UIC remains on par with its peer group median. UIC's admit rate has been rising at a rate similar to peers. The peer group admit rates range from a high (less selective) of 86% to a low (more selective) of 45%.



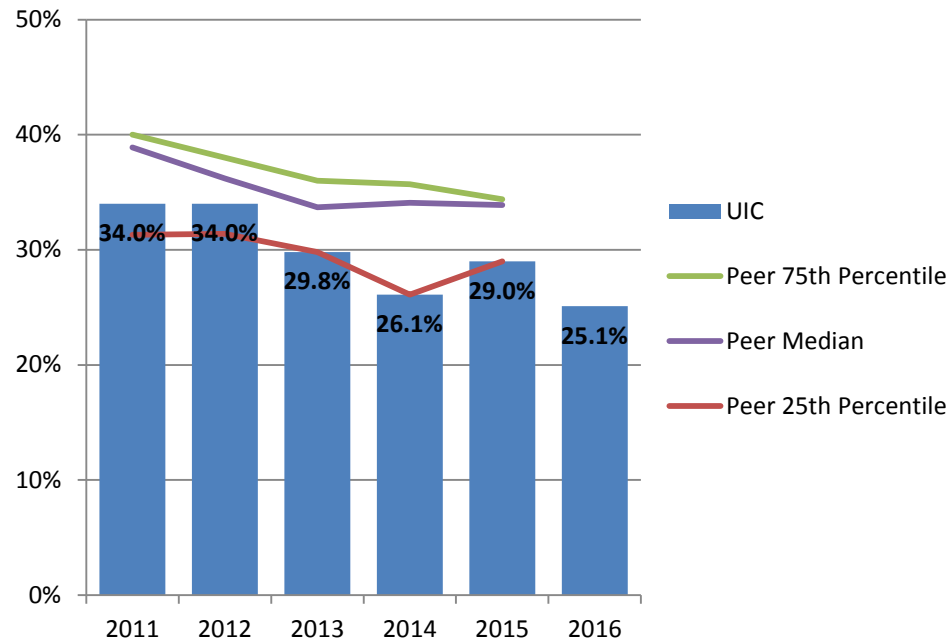
* Percent Admitted = Percent of (total admits divided by total applicants).



PERCENT FIRST-TIME FRESHMEN ADMISSIONS YIELD*

FALL 2011 – FALL 2016

Admissions yield at UIC is lower than the peer group median. UIC's yield rate has ranged between 25% and 30% the last four years. The peer group median was 34% in fall 2015.



* Admissions Yield = Percent of (total enrolled divided by total admits).

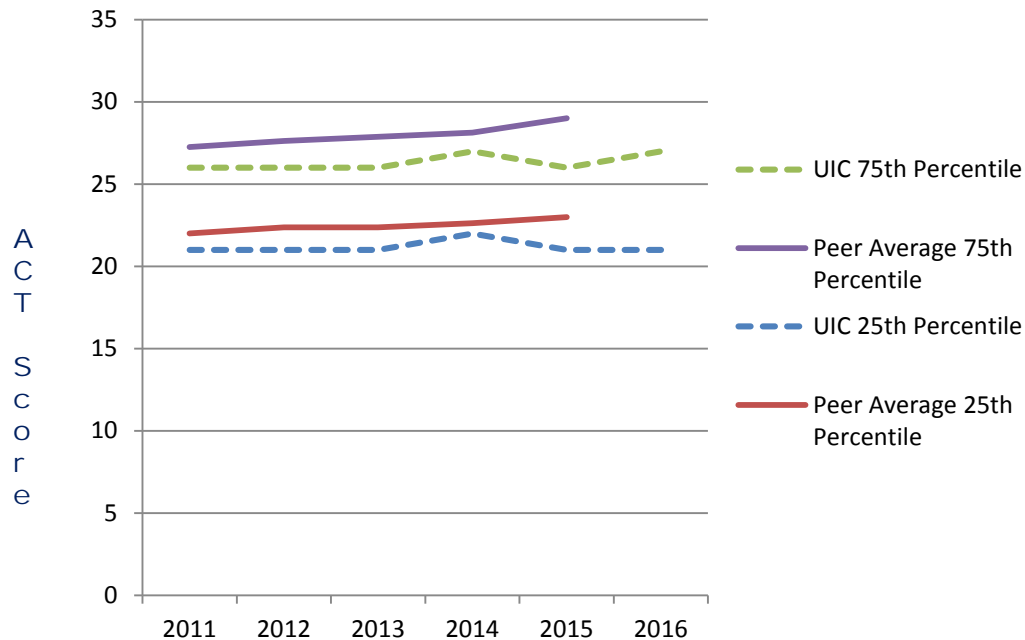


STUDENT QUALIFICATIONS



ENTERING FRESHMEN ACT COMPOSITE SCORES 25TH AND 75TH PERCENTILE FALL 2011 – FALL 2016

UIC's 25th percentile and 75th percentile scores are two to three points lower than the peer group (21 vs. 23 and 26 vs. 29). Research has shown that ACT is a poor predictor of student success nationally. A commitment to access and diversity has led UIC to consider and adopt other measures of student quality, including high school GPA, Selective Index, high school rank and non-cognitive skills.



Note: Fewer students at peer institutions submit ACT scores.



TRANSFER ENROLLMENTS

FIRST-TIME TRANSFERS ENROLLMENT

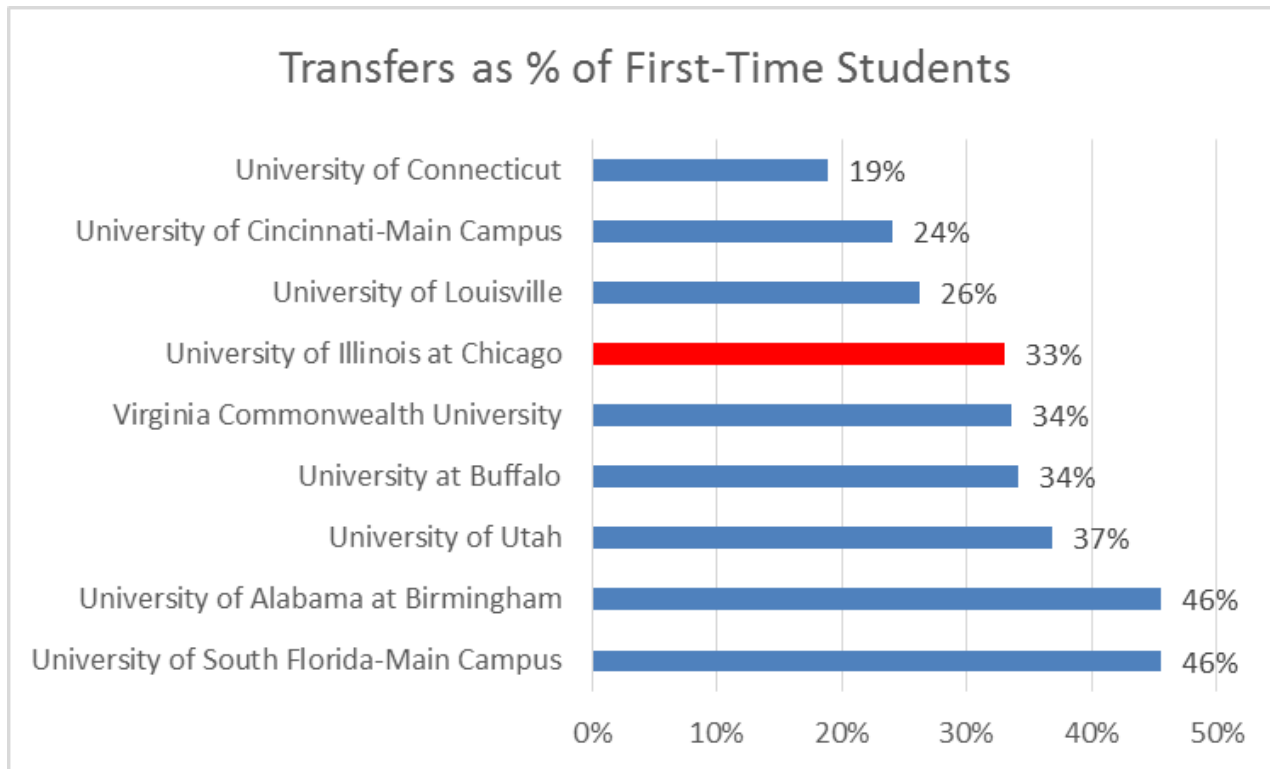
FALL 2010 – FALL 2016

A significant number of transfer enrollments also occurs in the spring semester at UIC. In 2013 and 2014, UIC had more first-time transfer students than its peer group median. In 2015, UIC was slightly below the peer group median.

Institution	2011	2012	2013	2014	2015	2016
University of South Florida	3,125	3,505	3,355	3,352	3,454	
Virginia Commonwealth University	2,145	2,018	2,093	2,283	2,020	
University of Utah	2,183	2,017	1,841	1,703	1,993	
University at Buffalo	1,883	1,917	1,924	1,749	1,881	
University of Cincinnati	1,071	1,290	1,168	1,165	1,408	
University of Alabama at Birmingham	1,266	1,259	1,397	1,449	1,357	
University of Louisville	1,124	1,172	1,142	1,050	1,001	
University of Connecticut	911	867	785	809	876	
Peer Group Median	1,575	1,604	1,619	1,576	1,645	
University of Illinois at Chicago	1,522	1,452	1,640	1,718	1,569	1,958

FIRST-TIME TRANSFERS AS PERCENTAGE OF FIRST-TIME STUDENTS FALL 2015

In 2015, the percentage of first-time UIC transfer students was 33%, near the peer group median with a wide variation among peers, ranging from 18% to 45%.

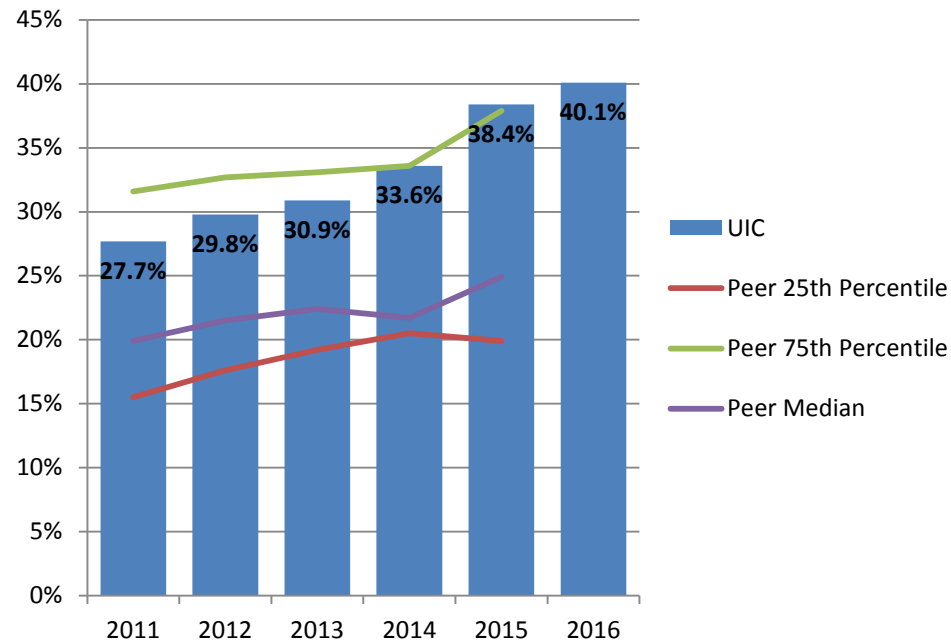


Note: IPEDS data are based on fall only.



PERCENT OF TRANSFER STUDENTS WHO SELF-IDENTIFIED FROM UNDERREPRESENTED* GROUPS, FALL 2011 – FALL 2016

The percent of first-time transfers from underrepresented groups at UIC is higher than its peer group median and near the peer group 75th percentile.



* Includes American Indian, Black, Hispanic, Native Hawaiian/Other Pacific Islander, and multi-racial students.



AREAS MEETING OR EXCEEDING EXPECTATIONS

Yield and Diversity of Applicant Pool

Year to Date Comparisons, 4/24/17

	2016	2017	% Chg
<u>Applications</u>			
Total	18,627	19,169	2.9%
URM	8,479	9,154	8.0%
Early Action	5,606	6,107	8.9%
Mean GPA	2.98	3.03	1.7%
<u>Admits</u>			
Total	13,006	14,127	8.6%
URM	5,209	6,121	17.5%
Early Action	4,895	5,355	9.4%
Mean GPA	3.39	3.39	0.0%



AREAS MEETING OR EXCEEDING EXPECTATIONS

Pathways to Attract Illinois Students

- Admission Via Excellence Program provides first year applicants ranked in the top 4% of their class or with a 3.9 unweighted GPA at schools that do not rank, admission to the college of their choice
- Transfer Admission Guarantee (TAG) program established agreements with 10 area community colleges during the 2016-2017 academic year for guaranteed admission to several UIC programs
- Augmented College Criteria and Evaluation for Student Success (ACCESS) program incorporates an assessment of non-cognitive factors in an interview process for admission
 - In Fall 2017, the process identified 478 students, of which 387 (262 underrepresented) were admitted

AREAS MEETING OR EXCEEDING EXPECTATIONS

Pathways to Attract Chicago Students

- Partnered with City Colleges of Chicago on STAR Scholars Program, with maximum of 250 scholarships to be awarded each year, beginning Fall 2017, 46 in pipeline
- Augmented Guaranteed Admission Transfer (GAT) Program with City College of Chicago to include STAR Scholars

AREAS MEETING OR EXCEEDING EXPECTATIONS

UIC is a federally designated Minority Serving Institution

- Designated Hispanic Serving Institution (HSI) in 2015
 - In 2016, received a \$5.3 million HSI Grant to establish L@S Ganas program to improve Latino S.T.E.M. retention and graduation
- Designated Asian American Native American Pacific Islander Serving Institution (AANAPISI), 2010
 - Since 2010, awarded 3 federal grants totaling \$5.6 million to support Asian American academic programs and social support services



AREAS FOR IMPROVEMENT

- Maintain comparable yield rate in a highly competitive market
- Increase enrollment of African American students
- Increase geographical diversity by expanding engagement throughout the Midwest, Northeast, Northwest, Southwest, and Southcentral regions
- Increase partnerships with community-based organizations to build awareness of UIC and its educational opportunities

STRATEGY TO ADDRESS AREAS FOR IMPROVEMENT

Maintain Comparable Yield:

- Fully implement the Admission Via Excellence Top 4% Program
- Pilot expansion of the Admission Via Excellence Program, Fall 2017
- Begin STAR Scholarship Program with Fall 2017 entering class
- Expand yield events (FIRESTARTER and IGNITE) and increase participation

STRATEGY TO ADDRESS AREAS FOR IMPROVEMENT

Increase Geographic Diversity:

- Increase out-of-state recruitment events and outreach
 - In Fall 2017, all U.S. states and territories were represented in the applicant pool
- Continue to expand the Chicago Grant to enhance out-of-state recruitment
 - In Fall 2017, there are 5% more Chicago Grant admits than the year to date comparison
- Increase international recruitment efforts through the International Accelerator Program/Shorelight Education Agreement
- Continue to hold Illinois High School and Community College recruitment events
 - Held over Illinois 827 events in the Fall 2017 cycle

STRATEGY TO ADDRESS AREAS FOR IMPROVEMENT

- **Build enrollment capacity in high demand degree programs requiring:**
 - new space
 - faculty and support services (advising)
- **Capital improvements:**
 - new student housing
 - critical deferred maintenance
 - Upgrade classrooms, labs and other facility upgrades