

University of Illinois at Springfield

Performance Metric Report Indicators

ADMISSIONS, STUDENT QUALIFICATIONS, AND TRANSFER ENROLLMENTS
UPDATES BY:

UNIVERSITY OFFICE FOR PLANNING AND BUDGETING
APRIL 7, 2017

REPORTED BY:
CHANCELLOR SUSAN J. KOCH
MAY 11, 2017

Reported to the Board of Trustees
May 11, 2017

Peer Groups



University of Illinois at Springfield

Auburn University - Montgomery

Clark University*

College of Charleston

Georgia College and State University

Iona College*

Lake Superior State University

Marist College*

Northern Michigan University

Shippensburg University of Pennsylvania

State University of New York at Brockport

Trinity University (San Antonio, TX)*

Union College (Schenectady, NY)*

University of South Dakota

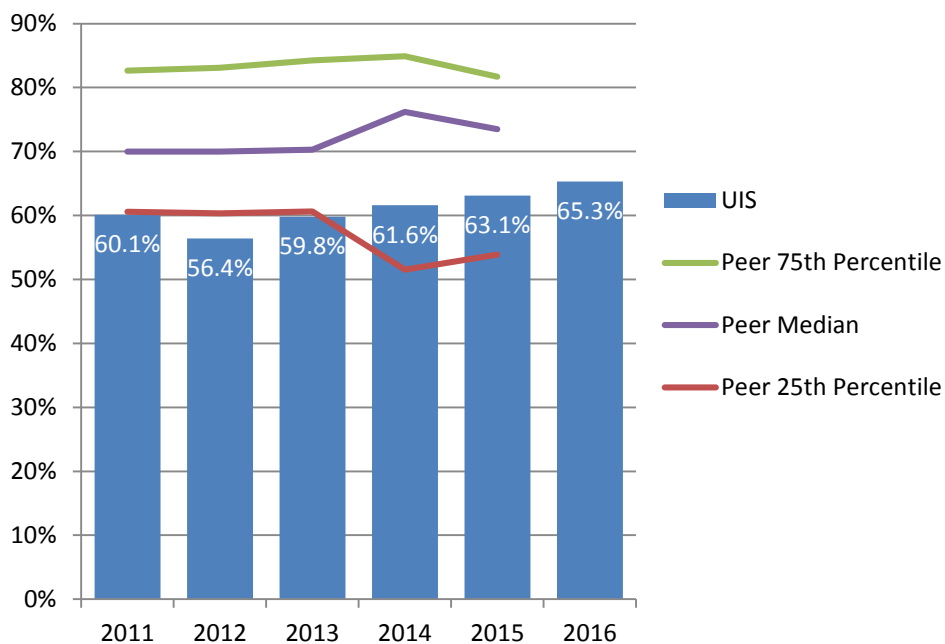
University of Wisconsin - Green Bay

* Private Institution

Admissions, Student Qualifications, and Transfer Enrollments



Percent First-Time Freshmen Applicants Admitted* Fall 2011 – Fall 2016

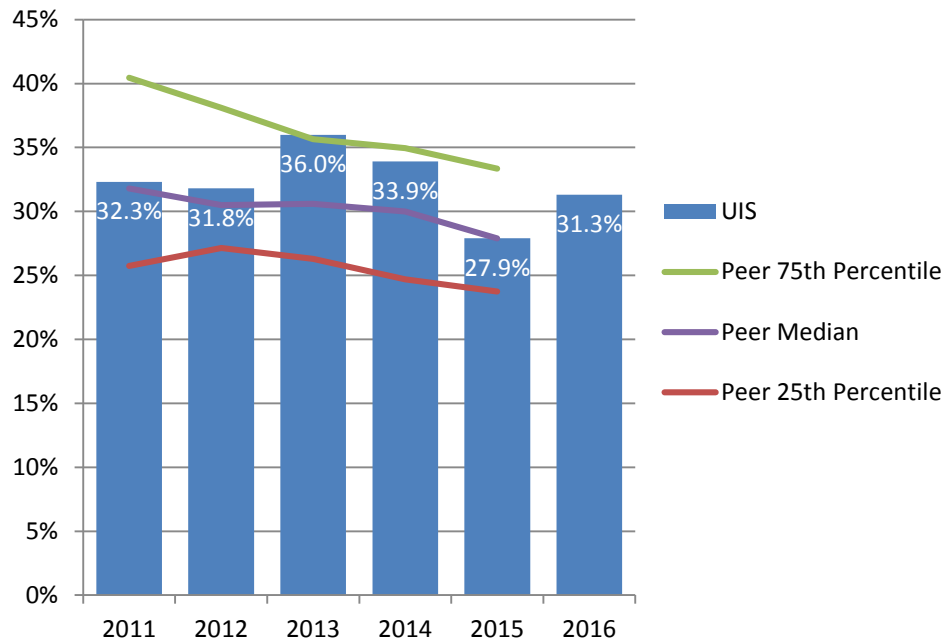


University of Illinois at Springfield admits a lower percent of freshmen applicants compared to the peer median.

* Percent Admitted = Percent of (total admits divided by total applicants).

Percent First-Time Freshmen Admissions Yield*

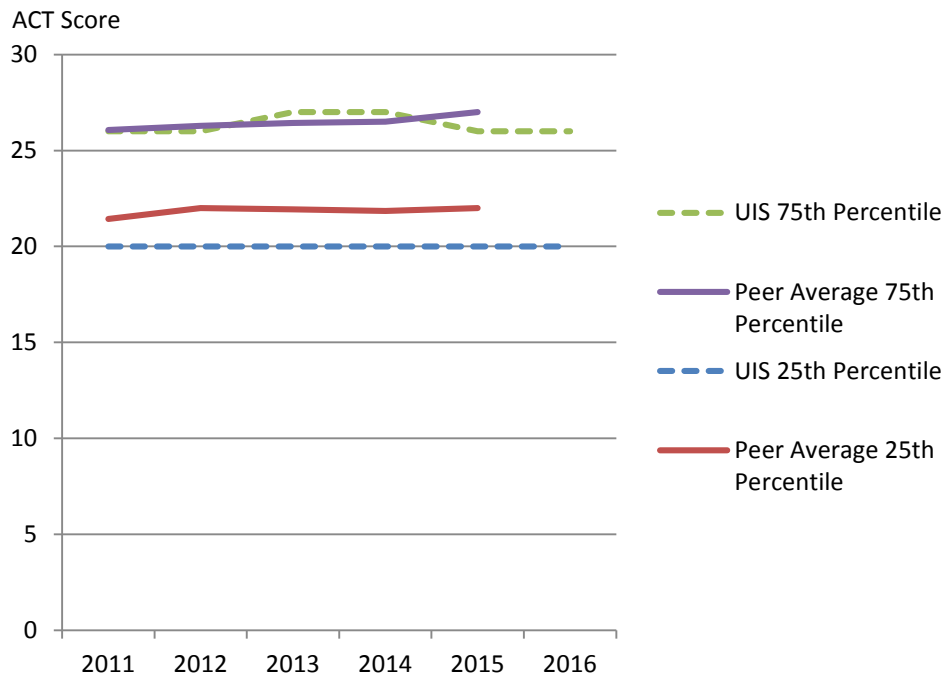
Fall 2011 – Fall 2016



University of Illinois at Springfield has an admissions yield higher than its peer median.

* Admissions Yield = Percent of (total enrolled divided by total admits).

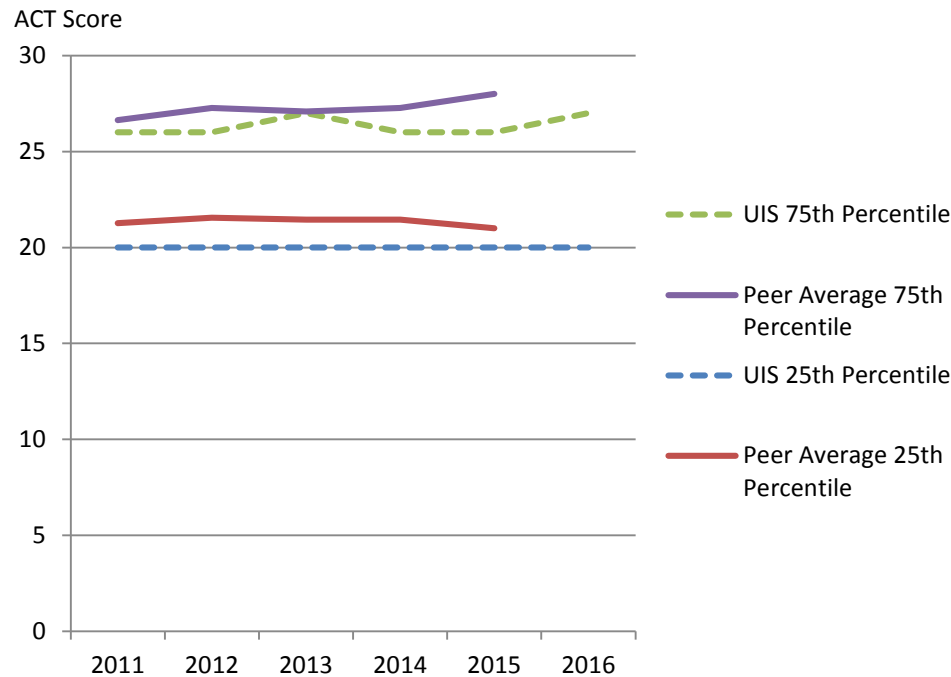
Entering Freshmen ACT Composite Scores 25th and 75th Percentile Fall 2011 – Fall 2016



The 75th percentile ACT composite scores of entering freshmen at the University of Illinois at Springfield are on par with the peer averages; the 25th percentile ACT composite scores are slightly below the peer averages.

Note: Fewer students at peer institutions submit ACT scores.

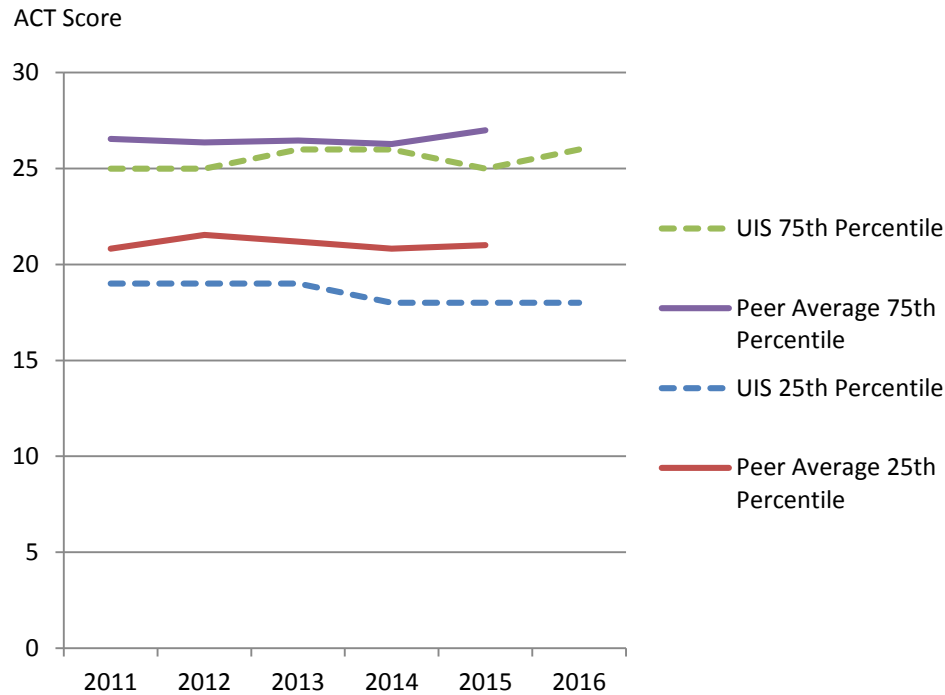
Entering Freshmen ACT English Score 25th and 75th Percentile Fall 2011 – Fall 2016



ACT English scores of entering freshmen at the University of Illinois at Springfield are slightly below the peer averages.

Note: Excludes Iona College, Marist College, and Shippensburg University of Pennsylvania due to lack of available data. Fewer students at peer institutions submit ACT scores.

Entering Freshmen ACT Math Score 25th and 75th Percentile Fall 2011 – Fall 2016



ACT Math scores of entering freshmen at the University of Illinois at Springfield are slightly below the peer averages.

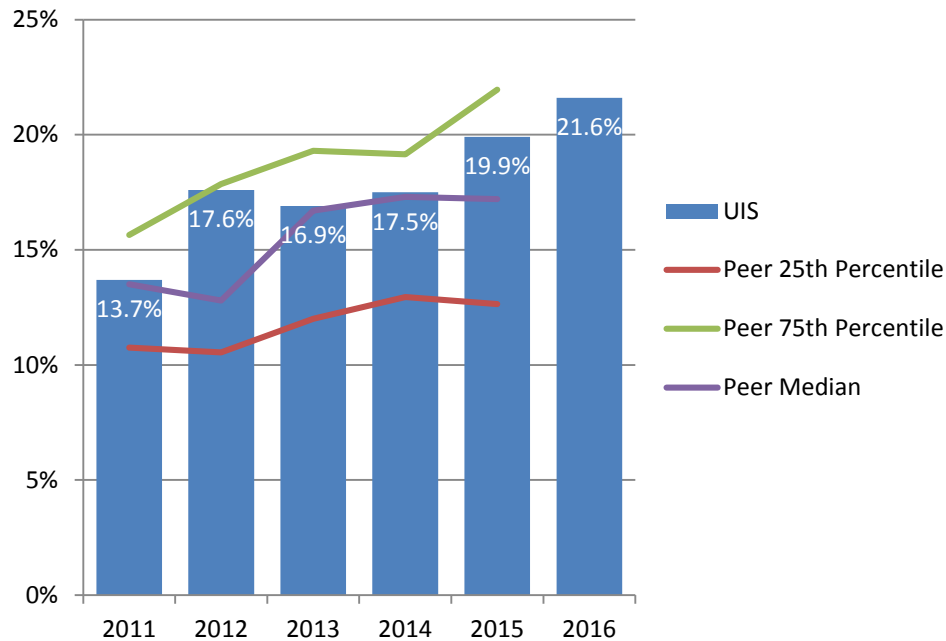
Note: Excludes Iona College, Marist College, and Shippensburg University of Pennsylvania due to lack of available data. Fewer students at peer institutions submit ACT scores.

University of Illinois at Springfield and Peer Institutions First-Time Transfers Enrollment Fall 2011 – Fall 2016

Institution	2011	2012	2013	2014	2015	2016
University of Illinois at Springfield	606	637	620	594	547	588
Auburn University at Montgomery	358	299	434	465	449	
Clark University	70	41	51	60	29	
College of Charleston	756	731	747	690	712	
Georgia College and State University	402	345	355	349	307	
Iona College	103	89	117	92	92	
Lake Superior State University	297	236	220	190	181	
Marist College	167	188	149	162	160	
Northern Michigan University	577	545	502	440	401	
Shippensburg University of Pennsylvania	414	365	387	356	314	
The College at Brockport	961	971	976	1,012	1,007	
Trinity University (San Antonio, TX)	21	24	25	25	28	
Union College (Schenectady, NY)	28	20	23	23	17	
University of South Dakota	820	715	635	597	523	
University of Wisconsin-Green Bay	628	648	587	611	604	

Data Source: IPEDS Data Center.

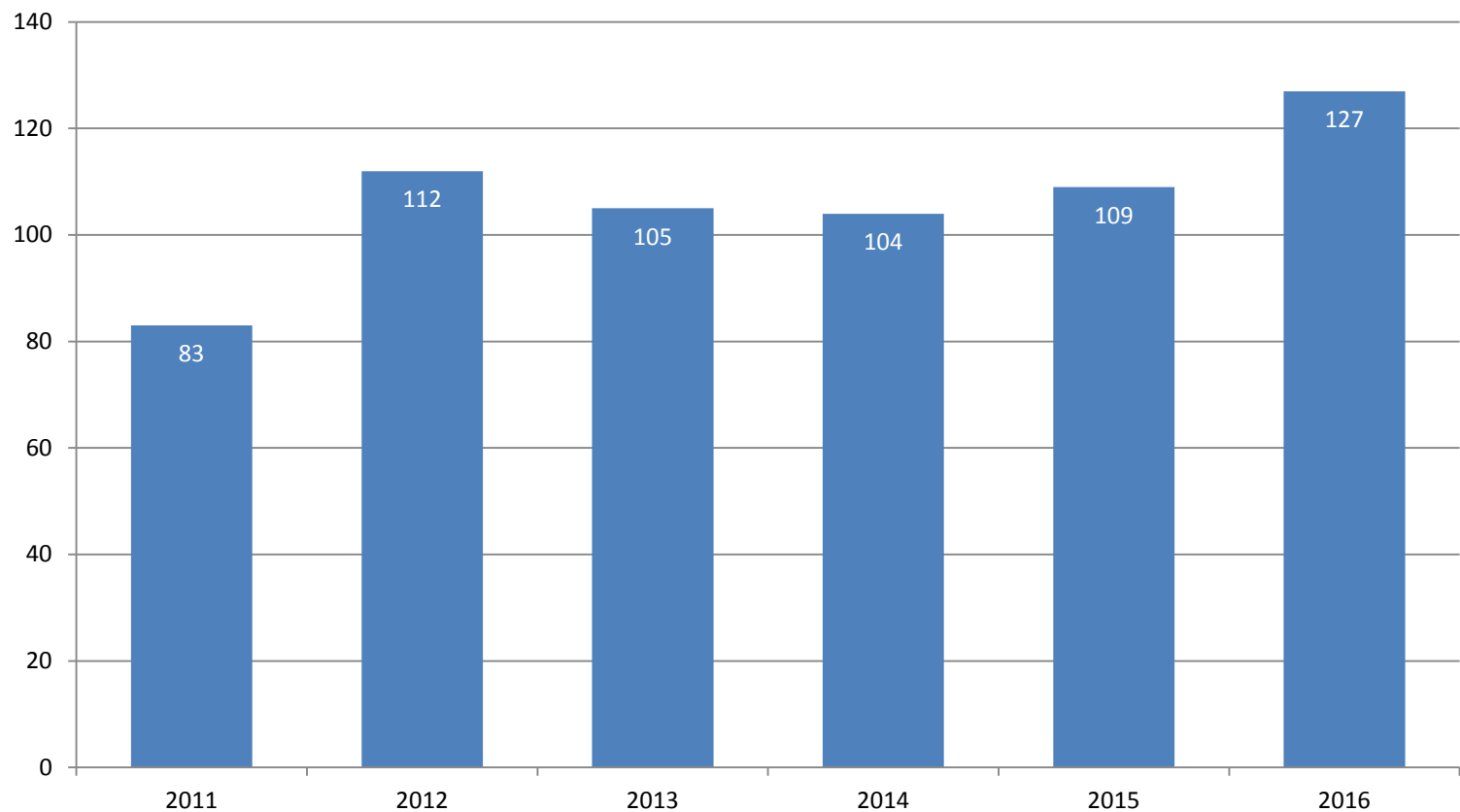
Percent First-Time Transfers from Underrepresented* Groups Fall 2011 – Fall 2016



The percent of first-time transfers from underrepresented groups at the University of Illinois at Springfield is higher than its peer median.

* Includes American Indian, Black, Hispanic, Native Hawaiian/Other Pacific Islander, and multi-racial students.

Number of First-Time Transfers from Underrepresented* Groups Fall 2011 – Fall 2016



* Includes American Indian, Black, Hispanic, Native Hawaiian/Other Pacific Islander, and multi-racial students.

University of Illinois at Springfield

Performance Metric Report Analysis of Indicators

Admissions, Student Qualifications, Transfer Enrollments Updates

REPORTED BY:

CHANCELLOR SUSAN J. KOCH

May 11, 2017

Areas Meeting or Exceeding Expectations

- Number of inquiries from prospective freshmen
- Percent of students accepting offers of admission
- Enrollment of highly qualified freshmen

Accomplishments

- The yield of enrolled freshmen and transfer students has increased. UIS had a record number of inquiries.
- More than 240 Pre-Nursing applications have been received for the third year of the BSN Nursing program—a partnership with UIC College of Nursing and Memorial Health Systems.
- Among its peer institutions, UIS ranks in the top 10% for first-time transfer enrollment.
- Among its peer institutions, the percent of first-time transfers from underrepresented groups at UIS is higher than its peer median.

Areas Needing Improvement

- Freshman enrollment
- Recruitment and enrollment of qualified applicants
- Enrollment of transfer students

Strategy to improve **freshman enrollment**

- Actions:
 - Focus on recruiting highly qualified freshmen
 - Increase recruitment activities in targeted markets
 - Implement high-touch strategies to better connect with admitted students
 - Implement new undergraduate programs
 - Complete student union project

Strategy to improve enrollment of highly qualified applicants

- Actions:
 - Increase financial support for highly qualified students
 - Continue recruitment in targeted high schools and community colleges
 - Add academic programs in high-demand areas
 - Implement My Degree Matters initiative
 - Targeted communications to recruit students redirected from UIUC admission

Strategy to improve **enrollment of transfer students**

- **Actions:**
 - Continue to enhance relationships with targeted community colleges
 - Add academic programs in high-demand areas to meet the needs and interests of transfer students
 - Continue implementation of new online marketing campaigns
 - UIS Admissions established Transfer Center office space at Illinois Central Community College and Richland Community College

Areas we are watching

- Transfer and freshman enrollments
- Applicant qualifications
- Constantly changing financial factors that affect enrollment decisions