

University of Illinois at Urbana-Champaign

Performance Metric Report

**ADMISSIONS, STUDENT QUALIFICATIONS, AND TRANSFER ENROLLMENTS
UPDATES BY:**

**UNIVERSITY OFFICE FOR PLANNING AND BUDGETING
APRIL 7, 2017**

**REPORTED BY:
CHANCELLOR ROBERT J. JONES
MAY 11, 2017**

Reported to the Board of Trustees
May 11, 2017

Peer Group



University of Illinois at Urbana-Champaign*

University of California - Berkeley*

University of California - Los Angeles

University of California - San Diego

University of Michigan - Ann Arbor

University of North Carolina - Chapel Hill**

University of Texas - Austin***

University of Washington

University of Wisconsin - Madison

University of Virginia

* No medical center.

** Medical center affiliated with the university, but owned by the state.

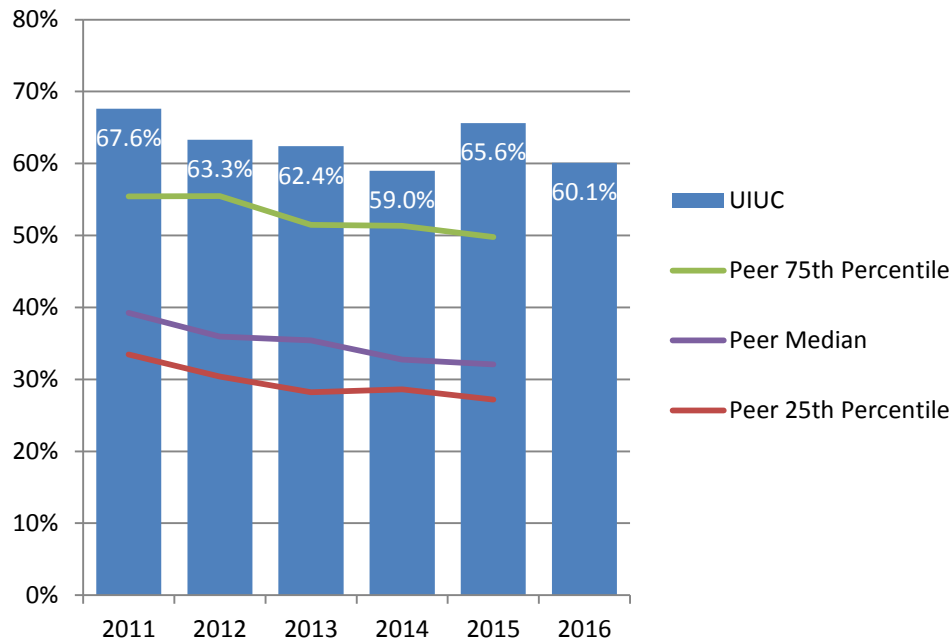
*** An affiliated medical center is under construction and will begin operations in 2017.

Admissions, Student Qualifications, and Transfer Enrollments





Percent First-Time Freshmen Applicants Admitted* Fall 2011 – Fall 2016



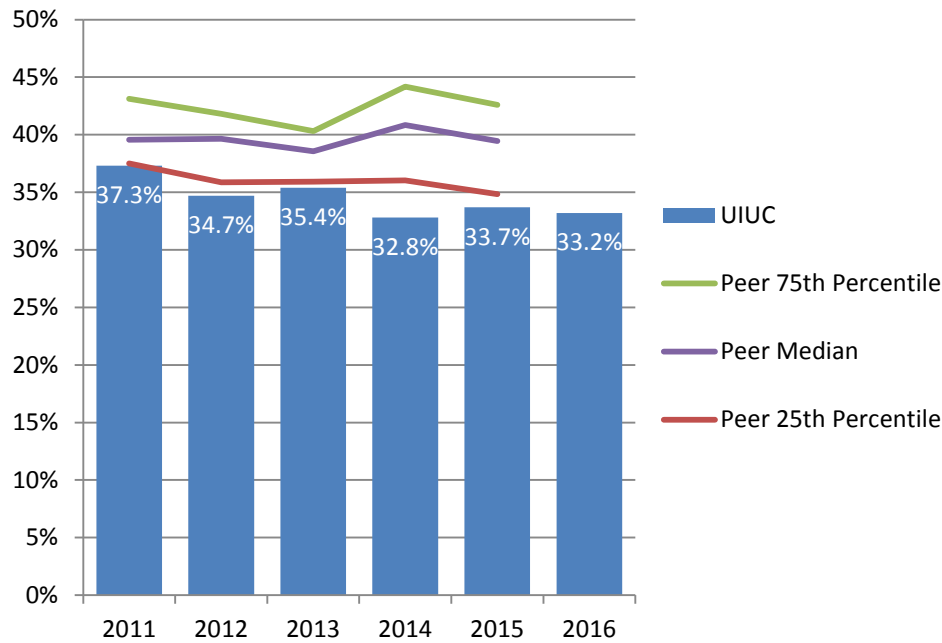
University of Illinois at Urbana-Champaign admits a higher percent of freshman applicants compared to the peer median.

* Percent Admitted = Percent of (total admits divided by total applicants).



Percent First-Time Freshmen Admissions Yield*

Fall 2011 – Fall 2016



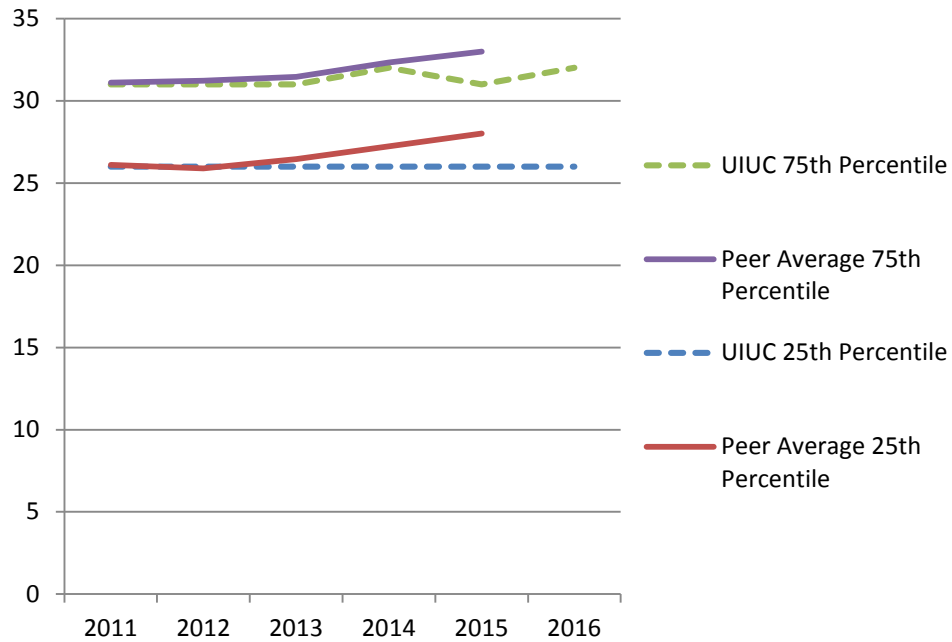
Admissions yield at the University of Illinois at Urbana- Champaign has fallen below the peer median.

* Admissions Yield = Percent of (total enrolled divided by total admits).



Entering Freshmen ACT Composite Scores 25th and 75th Percentile Fall 2011 – Fall 2016

ACT Score

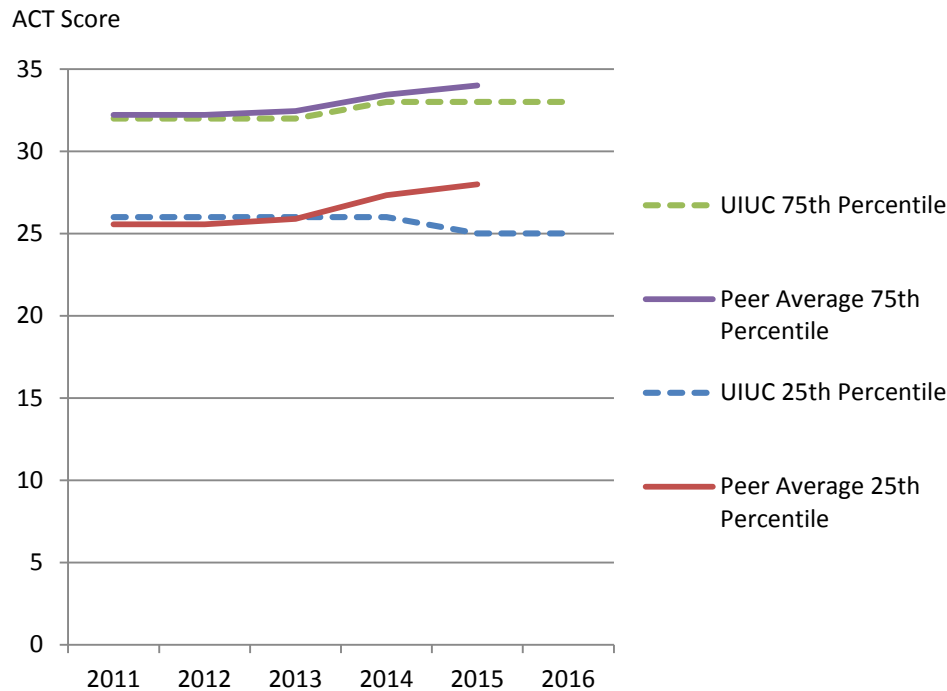


ACT composite scores of incoming freshmen at the University of Illinois at Urbana-Champaign are slightly below the peer averages in Fall 2015.

Note: Fewer students at peer institutions submit ACT scores.



Entering Freshmen ACT English Score 25th and 75th Percentile Fall 2011 – Fall 2016

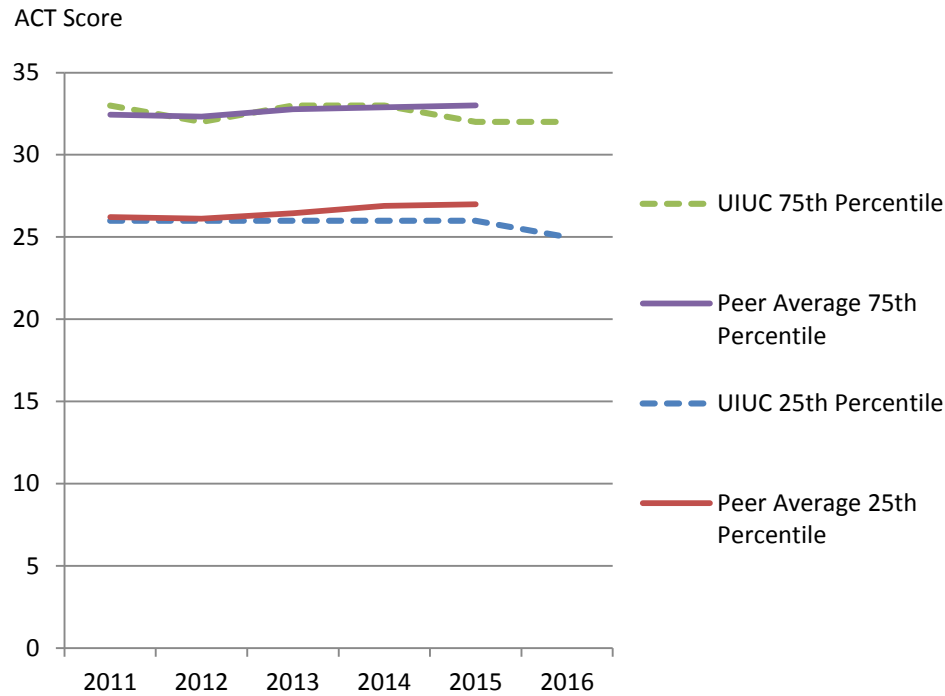


ACT English scores of incoming freshmen at the University of Illinois at Urbana-Champaign are slightly below the peer averages in Fall 2015.

Note: Fewer students at peer institutions submit ACT scores.



Entering Freshmen ACT Math Score 25th and 75th Percentile Fall 2011 – Fall 2016



ACT Math scores of entering freshmen at the University of Illinois at Urbana-Champaign are on par with peer averages.

Note: Fewer students at peer institutions submit ACT scores.



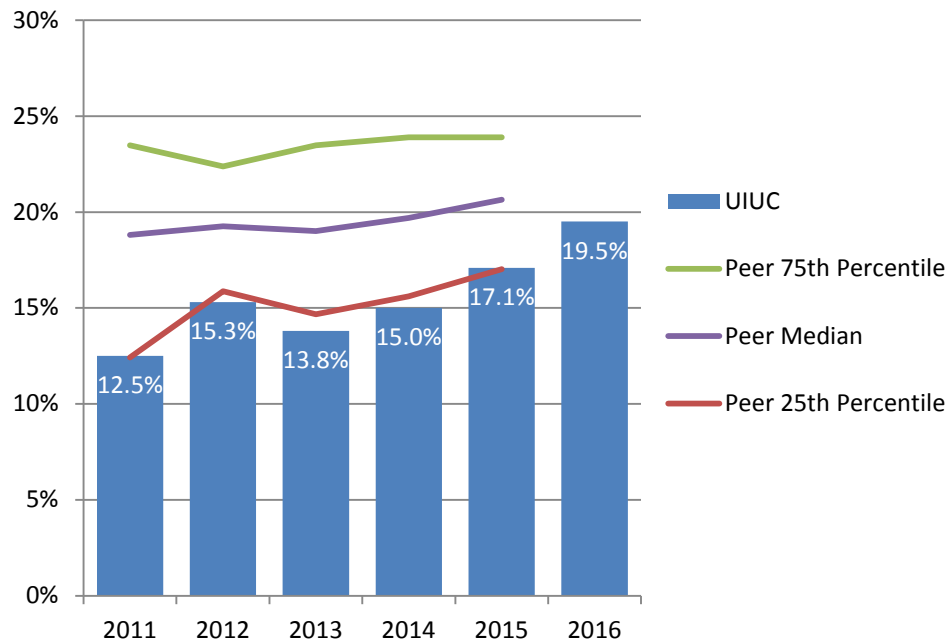
University of Illinois at Urbana-Champaign and Peer Institutions First-Time Transfers Enrollment Fall 2011 – Fall 2016

<u>Institution</u>	<u>2011</u>	<u>2012</u>	<u>2013</u>	<u>2014</u>	<u>2015</u>	<u>2016</u>
University of Illinois at Urbana-Champaign	1,398	1,350	1,343	1,331	1,381	1,380
University of California - Berkeley	2,336	2,182	2,241	2,187	2,170	
University of California - Los Angeles	3,116	3,173	2,821	3,167	3,107	
University of California - San Diego	2,795	2,228	2,699	2,459	2,676	
University of Michigan - Ann Arbor	874	905	966	929	888	
University of North Carolina - Chapel Hill	791	845	876	884	850	
University of Texas - Austin	2,492	2,579	2,597	2,307	2,472	
University of Virginia	621	599	671	665	655	
University of Washington	2,001	1,774	1,503	1,927	1,785	
University of Wisconsin-Madison	1,326	1,227	1,092	771	1,272	

Data Source: IPEDS Data Center.



Percent First-Time Transfers from Underrepresented* Groups Fall 2011 – Fall 2016

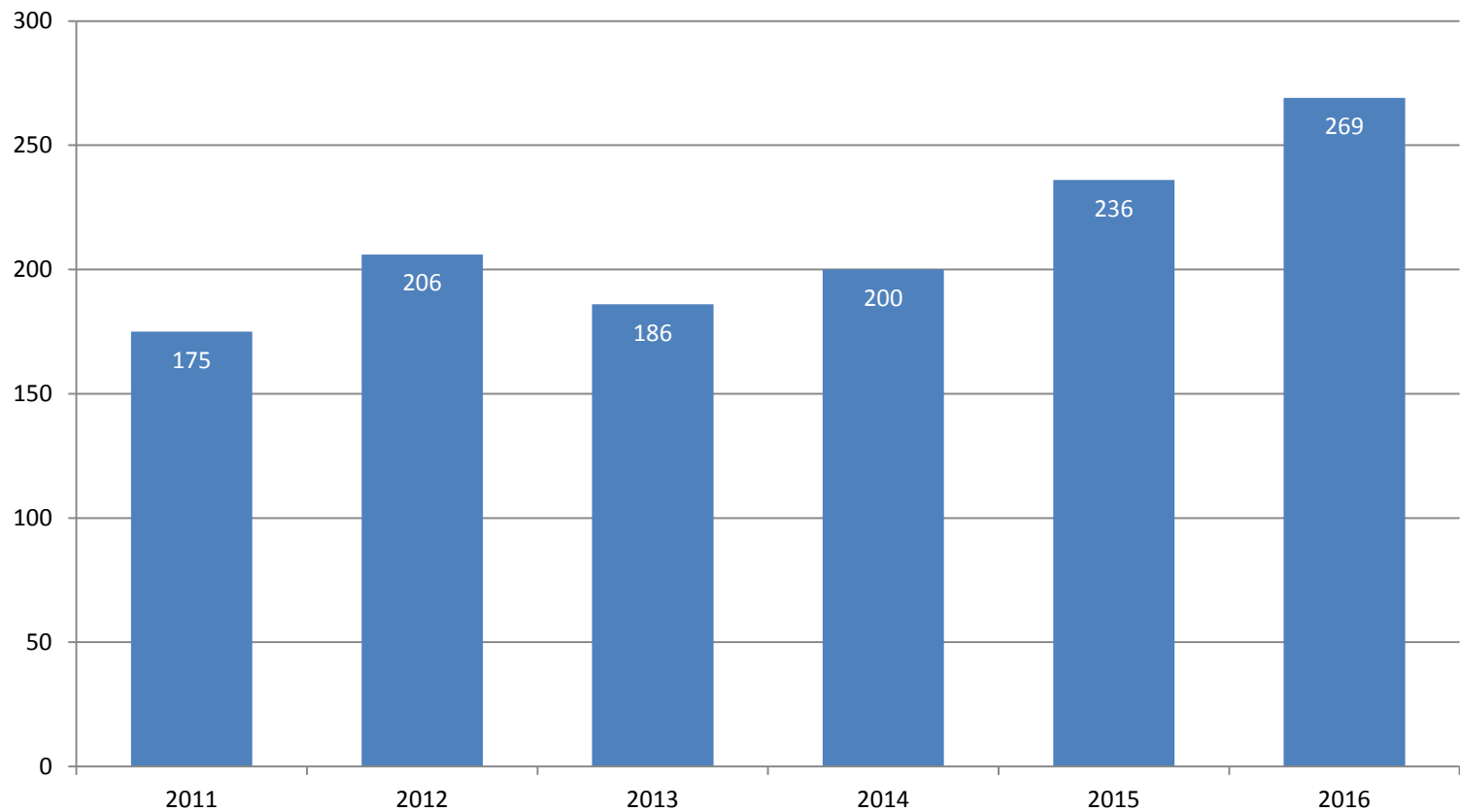


The percent of first-time transfers from underrepresented groups at the University of Illinois at Urbana-Champaign is lower than its peer median.

* Includes American Indian, Black, Hispanic, Native Hawaiian/Other Pacific Islander, and multi-racial students.



Number of First-Time Transfers from Underrepresented* Groups Fall 2011 – Fall 2016



* Includes American Indian, Black, Hispanic, Native Hawaiian/Other Pacific Islander, and multi-racial students.

Overview

Areas of Strength/Accomplishments

- Illinois continues to serve the State of Illinois by enrolling one of the largest freshman classes and one of the highest percentage of residents in our peer group, while matching the academic quality of peers with much smaller enrollments.
- Transfer enrollments and the percent of transfer students from underrepresented groups has grown significantly in the last five years.

Areas for Improvement

- Improve selectivity by increasing applications from qualified students and continue efforts to increase the yield of admitted students.
- Continue efforts to enroll more transfer students from underrepresented groups.

Strategy to Address Areas for Improvement

- Intensify scholarship fundraising to help offset our high cost of attendance.
- Implement Coalition Application (a competitor to the Common Application that is limited to highly selective universities).
- Continue implementation of a new cutting-edge recruitment management system (Slate).
- Explore the use of the Common Application for 2018.



Areas to Watch

- Potential cuts to the Monetary Award Program (MAP grants).
- The lack of a state budget may impact applications, yields and enrollments if families perceive the cuts will impact the quality of education or support services provided at Illinois.
- Implementation of “prior-prior year” for financial aid processing.
- Continued uncertainty around visas may result in decreased international student enrollment.