

# University of Illinois at Chicago



## Performance Metrics

**ADMISSIONS, STUDENT QUALIFICATIONS, AND  
TRANSFER ENROLLMENTS UPDATE**

**REPORTED BY:  
CHANCELLOR MICHAEL D. AMIRIDIS  
MAY 16, 2019**

Reported to the Board of Trustees  
May 16, 2019

# PEER GROUPS

## Peer Group

SUNY, University at Buffalo

University of Alabama at Birmingham

University of Cincinnati

University of Connecticut

University of Kentucky

University of New Mexico

University of South Florida

University of Utah

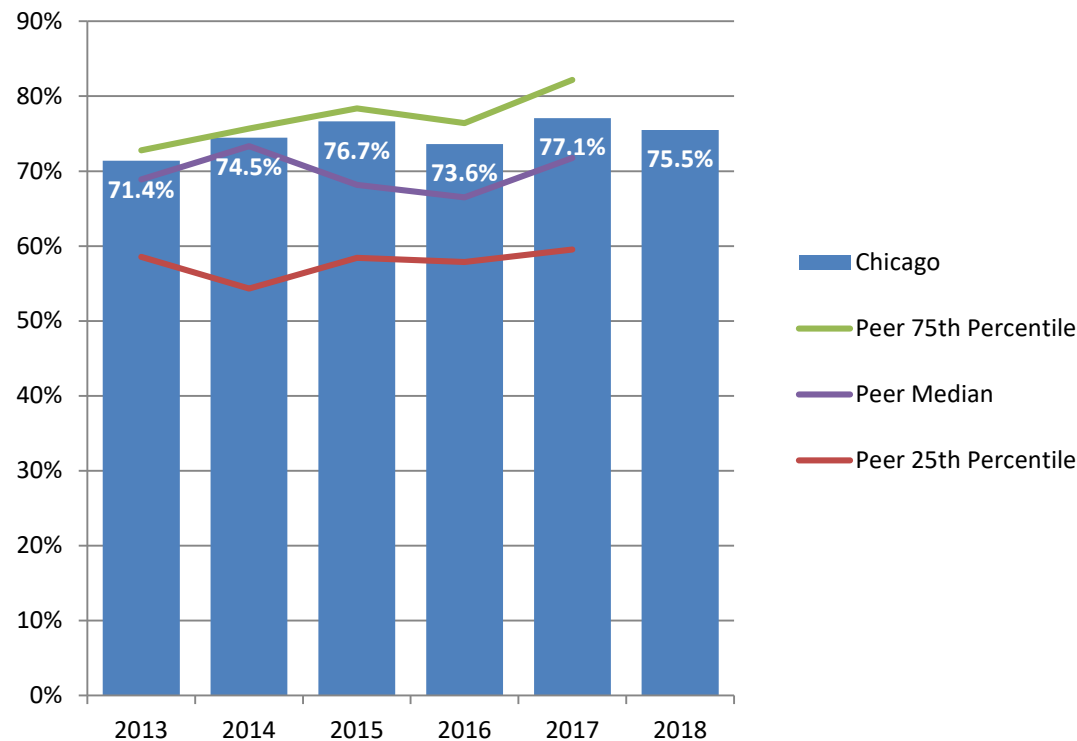
Virginia Commonwealth University

# ADMISSIONS

# PERCENT FIRST-TIME FRESHMEN APPLICANTS ADMITTED\*

## FALL 2013 – FALL 2018

The percent of freshmen applicants admitted to UIC remains on par with its peer group median. The trend of UIC's admit rate has been following a pattern similar to peers. The peer group admit rates range from a high (least selective) of 96% to a low (most selective) of 48%.



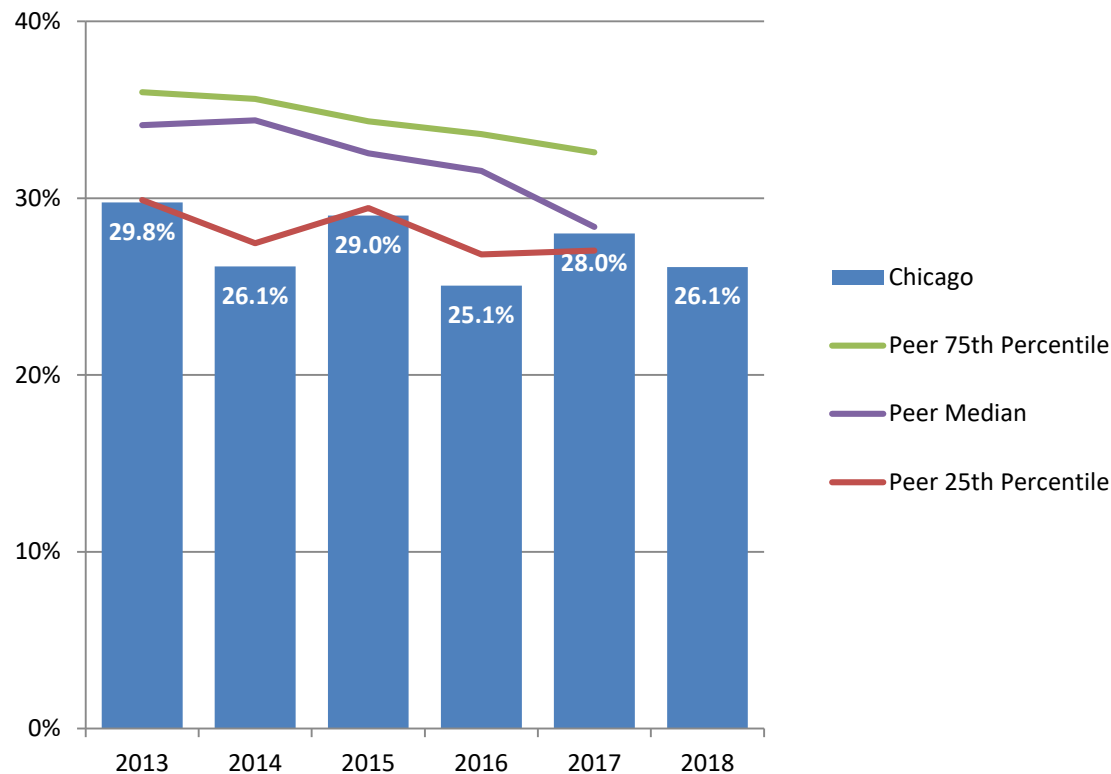
\* Percent Admitted = Percent of (total admits divided by total applicants).



# PERCENT FIRST-TIME FRESHMEN ADMISSIONS YIELD\*

## FALL 2013 – FALL 2018

The peer group median admissions yield has declined in recent years, and as a result, UIC's yield rate is now similar to the peer group median. UIC's yield rate has ranged between 25% and 30% the last six years. The peer group median was 28% in fall 2017, the same as UIC's yield rate.



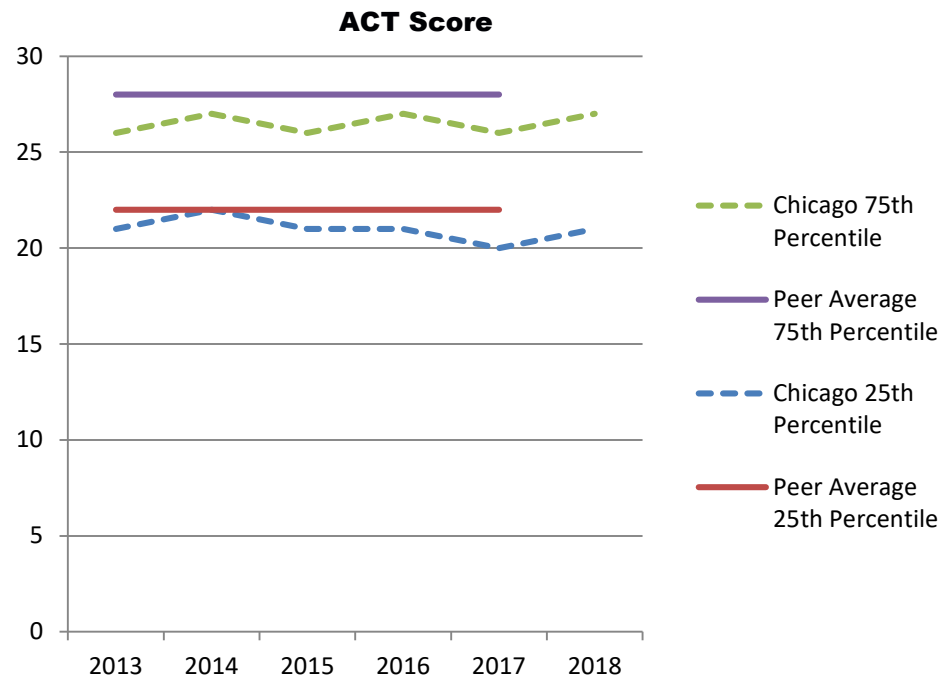
\* Admissions Yield = Percent of (total enrolled divided by total admits).



# STUDENT QUALIFICATIONS

# ENTERING FRESHMEN ACT COMPOSITE SCORES 25TH AND 75TH PERCENTILE FALL 2013 – FALL 2018

UIC's 25th percentile and 75th percentile ACT scores are similar to the peer group. Research has shown that ACT is a poor predictor of student success at UIC (a common finding in higher education literature). A commitment to access and diversity has led UIC to consider and adopt other measures of student quality, including high school GPA, Selective Index, high school rank and non-cognitive skills.



Note: More students at peer institutions submit ACT scores. The State of Illinois provides funding to Illinois public high schools to administer college entrance exams. In 2016, the State of Illinois changed contractors from ACT to the College Board. This resulted in many more applicants reporting SAT scores UIC and less reporting ACT scores. Since many high schools had already paid for students to take the ACT that spring, the transition occurred over several years and was evident in both Fall 2017 and Fall 2018 applications.



# TRANSFER ENROLLMENTS



# FIRST-TIME TRANSFERS ENROLLMENT

## FALL 2013 – FALL 2018

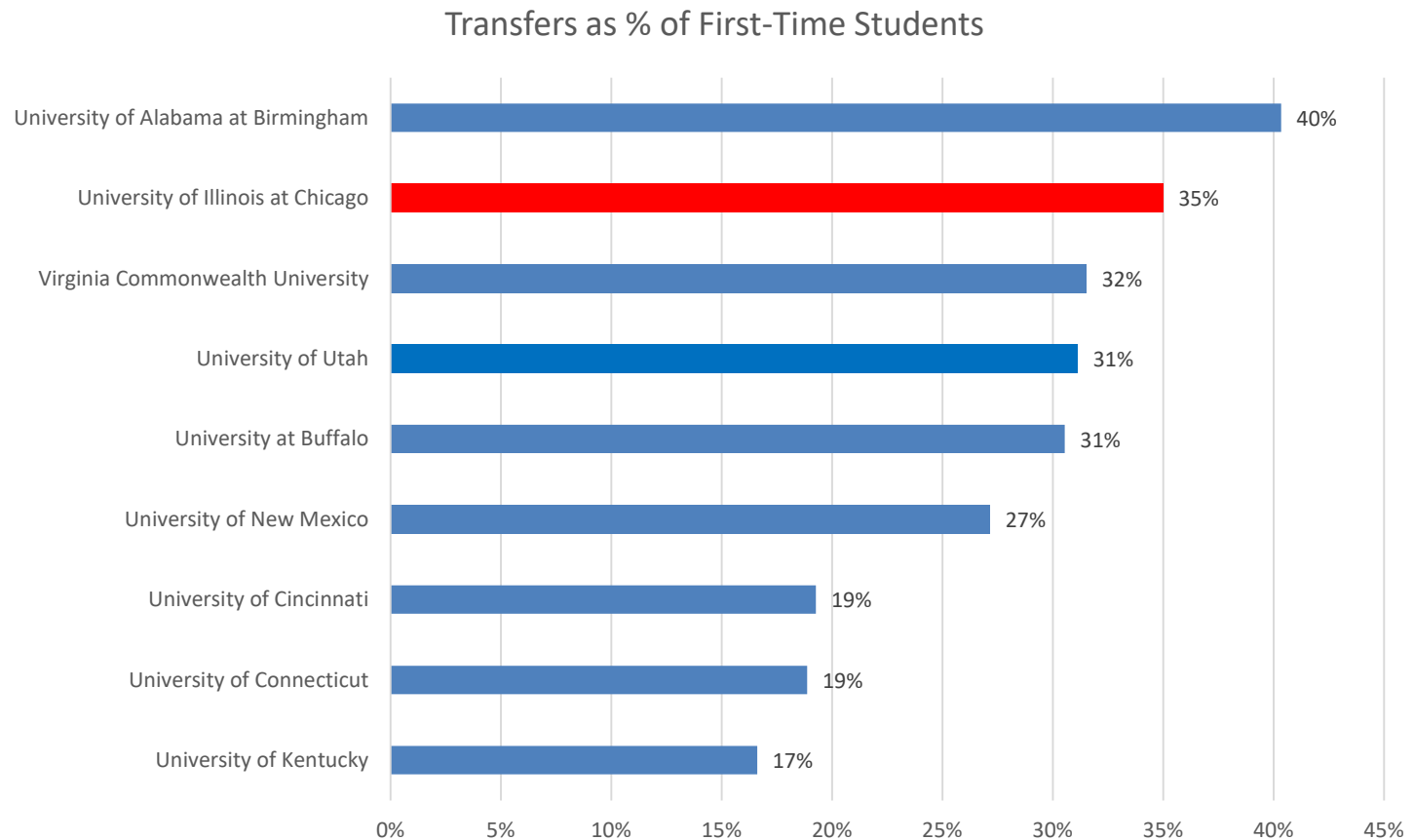
The number of UIC first-time transfer students has grown from 1,640 in 2013 to 2,181 in 2017, and 2,080 in 2018. This is the largest increase of the peer group during this time period in both numbers and percentage change.

Institution	2013	2014	2015	2016	2017	2018	2013-17 N Chg	2013-17 % Chg
University at Buffalo	1,924	1,749	1,881	1,858	1,838		(86)	-4.5%
University of Alabama at Birmingham	1,397	1,449	1,357	1,598	1,555		158	11.3%
University of Cincinnati	1,168	1,165	1,408	1,338	1,289		121	10.4%
University of Connecticut	785	809	876	874	857		72	9.2%
University of Kentucky	1,100	1,026	935	897	967		(133)	-12.1%
University of New Mexico	1,250	1,253	1,218	1,229	1,200		(50)	-4.0%
University of South Florida	3,355	3,352	3,454	3,571	3,759		404	12.0%
University of Utah	1,841	1,703	1,993	1,893	1,862		21	1.1%
Virginia Commonwealth University	2,093	2,283	2,020	2,068	1,902		(191)	-9.1%
<b>Peer Group Median</b>	<b>1,397</b>	<b>1,449</b>	<b>1,408</b>	<b>1,598</b>	<b>1,555</b>		<b>158</b>	<b>11.3%</b>
<b>University of Illinois at Chicago</b>	<b>1,640</b>	<b>1,718</b>	<b>1,569</b>	<b>1,958</b>	<b>2,181</b>	<b>2,080</b>	<b>541</b>	<b>33.0%</b>

# FIRST-TIME TRANSFERS AS PERCENTAGE OF FIRST-TIME STUDENTS

## FALL 2017

In Fall 2017, the percentage of first-time UIC transfer students was 35%, second highest among the peer group.



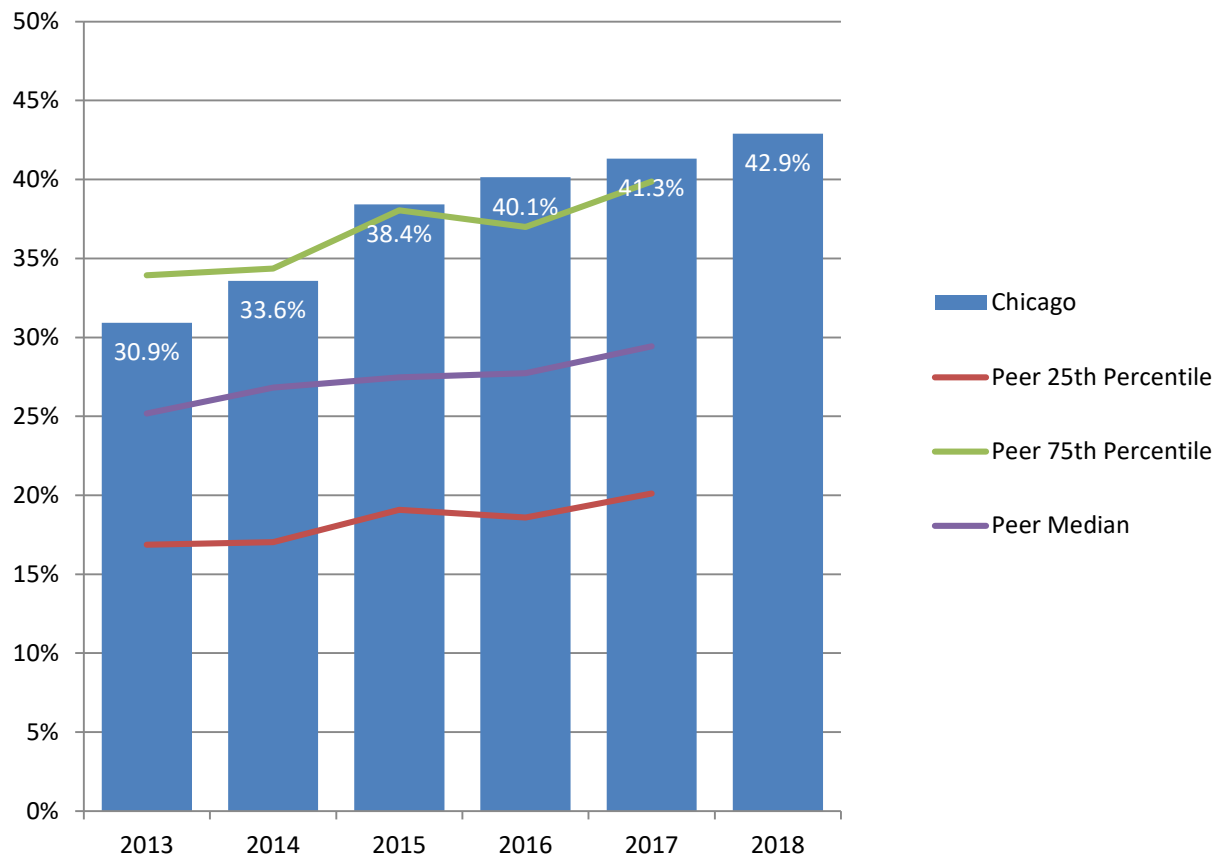
Note: First-time students includes full-time first-time and transfers. Percentage equals transfers/total. IPEDS data are based on fall only. A significant number of transfer enrollments also occur in the spring semester at UIC.



# PERCENT FIRST-TIME TRANSFERS FROM UNDERREPRESENTED\* GROUPS

## FALL 2013 – FALL 2018

The percent of first-time transfers from underrepresented groups at UIC is higher than its peer group median and near the peer group 75th percentile.



\* Includes American Indian, Black, Hispanic, Native Hawaiian/Other Pacific Islander, and multi-racial students.



# AREAS MEETING OR EXCEEDING EXPECTATIONS

## Yield and Diversity of Applicant Pool

- In Fall 2018, UIC had its largest first year applicant pool in its history. Fall 2019 submitted applications set a new record and surpassed the 23,000-application mark, an increase of 5% compared to Fall 2018 year-to-date submissions.
- In Fall 2018, underrepresented applicants increased 17%. Compared to year-to-date figures, there is a 8% increase in underrepresented applicants in Fall 2019.
- In Fall 2018, underrepresented admits increased 11%. Fall 2019 underrepresented admits increased another 6% based on a year-to-date comparison.

# AREAS MEETING OR EXCEEDING EXPECTATIONS

## Pathways to Attract Illinois Students

- Admission Via Excellence Program provides first-year applicants ranked in the top 4% of their class or with a 3.9 unweighted GPA at schools that do not rank, admission to the academic college of their choice.
- Transfer Admission Guarantee (TAG) program established agreements with 10 area community colleges during the 2016-2017 academic year for guaranteed admission to several UIC programs.
- Augmented College Criteria and Evaluation for Student Success (ACCESS) program incorporates an assessment of non-cognitive factors in an interview process for admission.

# AREAS MEETING OR EXCEEDING EXPECTATIONS

## Pathways to Attract Chicago Students

- Partnered with City Colleges of Chicago on STAR Scholars Program
  - Fall 2018, admitted approximately 50 STAR scholars
- Augmented Guaranteed Admission Transfer (GAT) Program with City College of Chicago to include STAR Scholars

# AREAS MEETING OR EXCEEDING EXPECTATIONS

## UIC is a federally designated Minority Serving Institution

- Designated Asian American Native American Pacific Islander Serving Institution (AANAPISI) in 2010
  - Since 2010, UIC has been awarded 3 federal grants totaling \$5.6 million to support Asian American academic programs and social support services.
- Designated Hispanic Serving Institution (HSI) in 2015
  - In 2016, UIC received an HSI Grant to establish L@S Ganas program to improve Latino S.T.E.M. retention and graduation.
  - In AY2018, L@S GANAS supported 37 students through the Research Fellowship, 60 students through peer mentoring (30 mentoring pairs/dyads), and 11 peer leaders for study groups in STEM courses.



# AREAS FOR IMPROVEMENT

- Maintain comparable yield rate in a highly competitive market
- Increase yield of underrepresented students, especially African American
- Increase geographic diversity
- Expand engagement throughout the Midwest, Northeast, Northwest, Southwest, and Southcentral regions of the United States
- Placement of full-time recruiters in California, and the Sub-central and mid-Atlantic region.
- Increase partnerships with community-based organizations, both within Illinois and nationally, to build meaningful relationships with UIC constituency





# STRATEGY TO ADDRESS AREAS FOR IMPROVEMENT

## Increase Yield Rate:

- Fully implement the Admission Via Excellence Top 4% Program
- Pilot expansion of the Admission Via Excellence Program to the top 10% with the College of Business
- Fully implement the STAR Scholarship Program
- Continue yield events (FIRESTARTER and IGNITE), and encourage increased participation:
  - Open House hosted over 10,000 guests in September 2018
  - Ignite: Admitted Student Day hosted over 4,000 guests in April 2019
  - Conducted over 130 visits to Chicago Public Schools

# STRATEGY TO ADDRESS AREAS FOR IMPROVEMENT

## Increase Geographic Diversity:

- Increase out-of-state recruitment events and outreach
  - In Fall 2019, freshmen were admitted from all 50 states and 6 US territories; from 80 countries other than the US
  - In Fall 2019, transfer students were admitted from 35 states and no US territory; from 7 countries other than the US
- Increase international recruitment efforts through the International Accelerator Program/Shorelight Education Agreement
- Counselor Fly-ins, bring counselors to Chicago from across the nation

# STRATEGY TO ADDRESS AREAS FOR IMPROVEMENT

## **Increase Geographic Diversity:**

- Continue to expand the Chicago Grant to enhance out-of-state recruitment
  - In Fall 2019, there are 5% plus Chicago Grant admits than the year to date comparison
- Continue to hold Illinois High School and Community College recruitment events
  - Held over 1,300 events in Illinois for the Fall 2019 cycle

## **Build enrollment capacity in high demand degree programs requiring:**

- New space for classroom and housing
- Faculty and support services (advising)

# STRATEGY TO ADDRESS AREAS FOR IMPROVEMENT

## Capital Improvements:

- New student housing
- Critical deferred maintenance
- Upgrade classrooms, labs and other facilities
- Academic and Residential Complex, an 83,000 sq. ft. residential space with 550-bed occupancy and 51,000 sq. ft. of academic space, to open on August 2019.
- Engineering Innovation Building, a 50,000 square-foot instructional space, research labs and staff offices, will open August 2019. It will also include the university's first high-bay structural research lab where researchers can perform tests on large-scale structures.