

University of Illinois at Urbana-Champaign

Dashboard Indicators

ADMISSIONS, STUDENT QUALIFICATIONS, TRANSFER ENROLLMENTS UPDATES BY:
UNIVERSITY OFFICE FOR PLANNING AND BUDGETING
APRIL 13, 2016

PRESENTED BY:
INTERIM CHANCELLOR BARBARA J. WILSON
MAY 19, 2016

Reported to the Board of Trustees
May 19, 2016

Peer Group



University of Illinois at Urbana-Champaign*

University of California - Berkeley*

University of California - Los Angeles

University of California - San Diego

University of Michigan - Ann Arbor

University of North Carolina - Chapel Hill**

University of Texas - Austin***

University of Washington

University of Wisconsin - Madison

University of Virginia

* No medical center.

** Medical center affiliated with the university, but owned by the state.

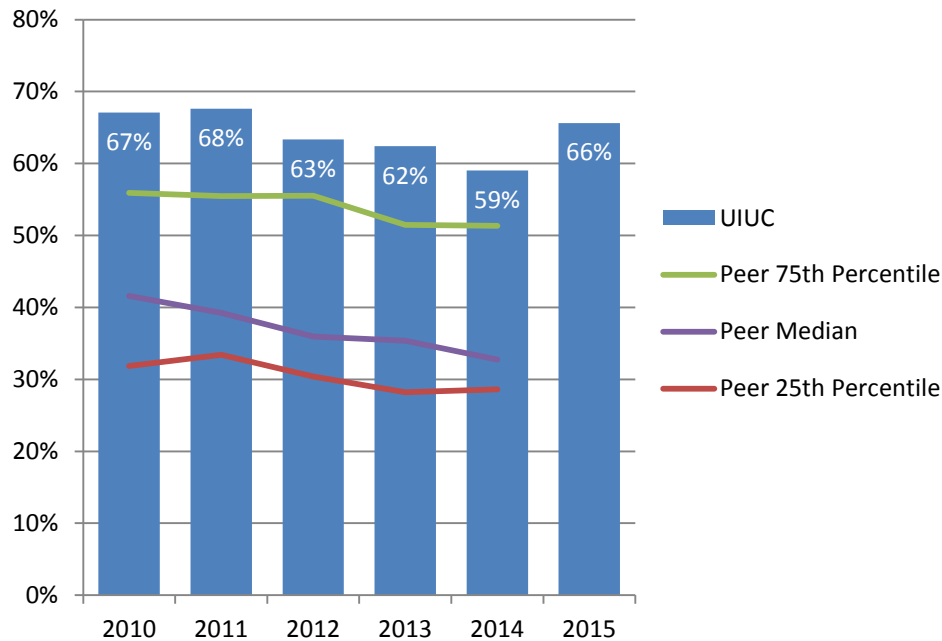
*** An affiliated medical center is under construction and will begin operations in 2017.

Admissions, Student Qualifications and Transfer Enrollments





Percent First-Time Freshmen Applicants Admitted* Fall 2010 – Fall 2015



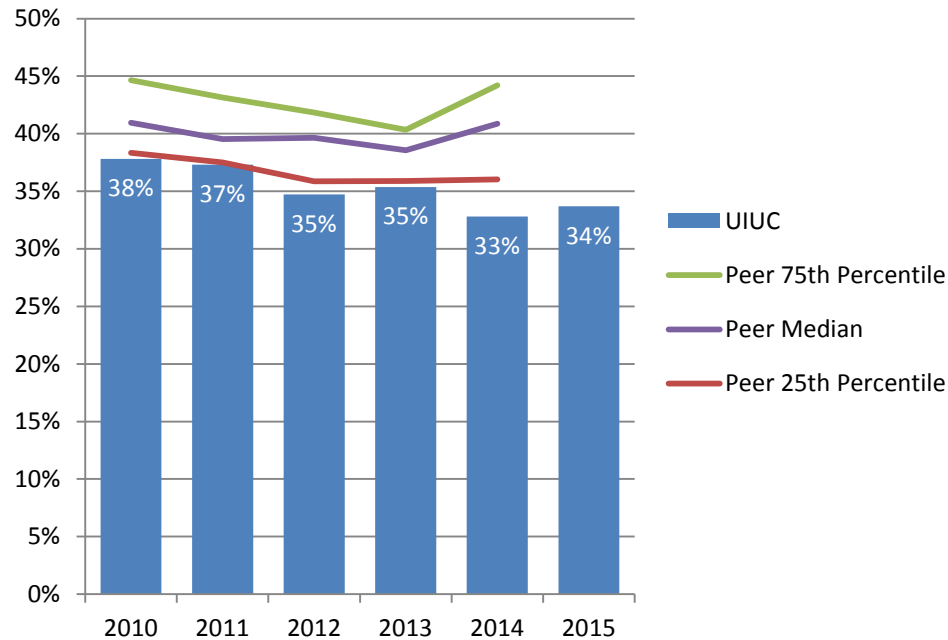
University of Illinois at Urbana-Champaign admits a higher percent of freshmen applicants compared to the peer median.

* Percent Admitted = Percent of total admits divided by total applicants.



Percent First-Time Freshmen Admissions Yield*

Fall 2010 – Fall 2015

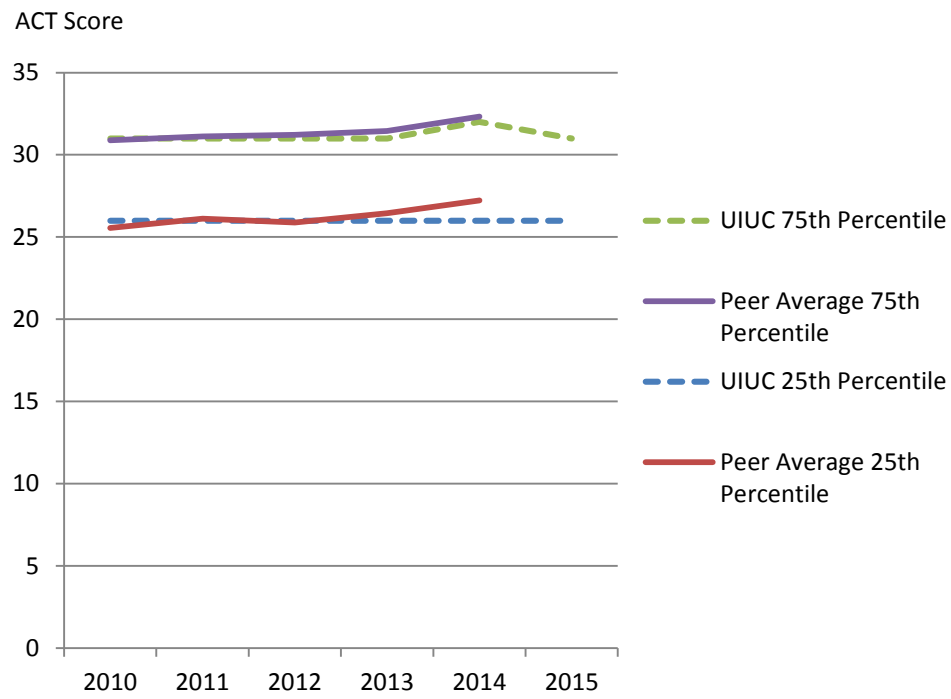


Admissions yield at the University of Illinois at Urbana-Champaign is below the peer median.

* Admissions Yield = Percent of total enrolled divided by total admits.



Entering Freshmen ACT Composite Scores 25th and 75th Percentile Fall 2010 – Fall 2015

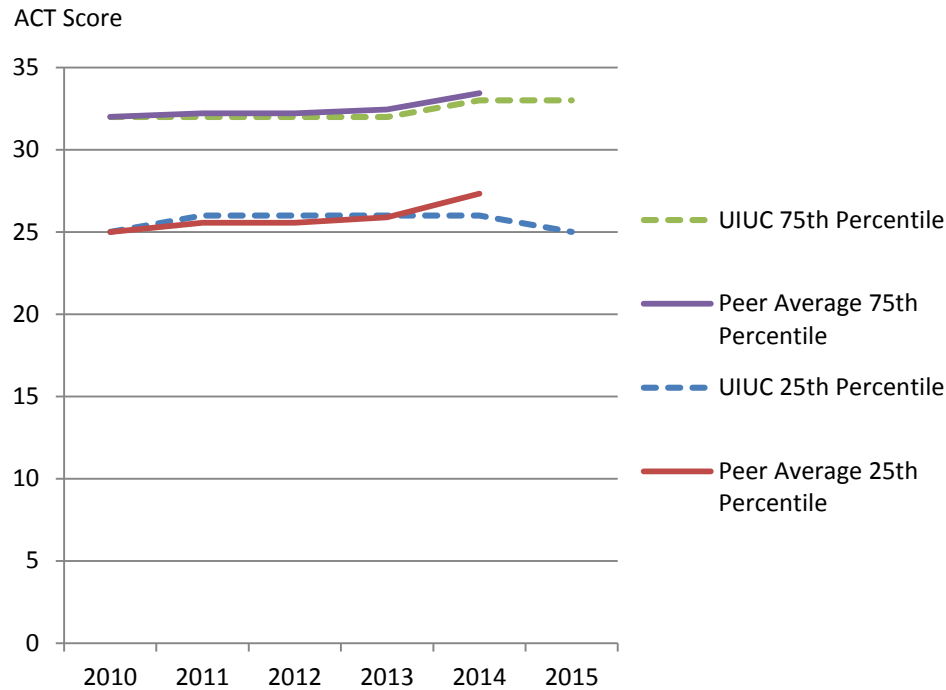


ACT scores of incoming freshmen at the University of Illinois at Urbana-Champaign are on par with peers.

Note: Fewer students at peer institutions submit ACT scores.



Entering Freshmen ACT English Score 25th and 75th Percentile Fall 2010 – Fall 2015

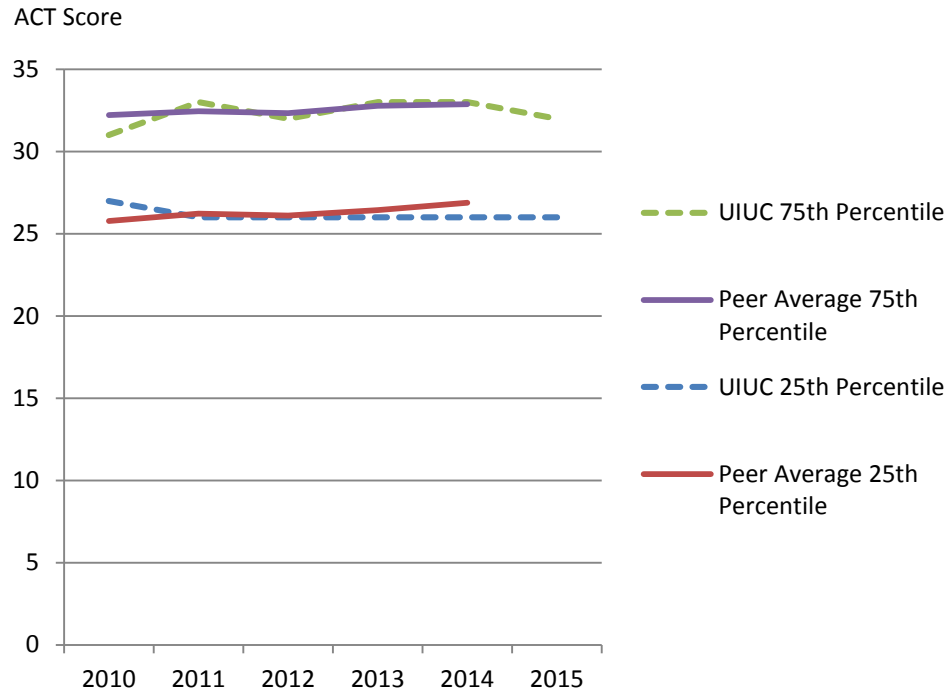


ACT English scores of incoming freshmen at the University of Illinois at Urbana-Champaign are on par with peers.

Note: Fewer students at peer institutions submit ACT scores.



Entering Freshmen ACT Math Score 25th and 75th Percentile Fall 2010 – Fall 2015



ACT Math scores of entering freshmen at the University of Illinois at Urbana-Champaign are on par with peers.

Note: Fewer students at peer institutions submit ACT scores.



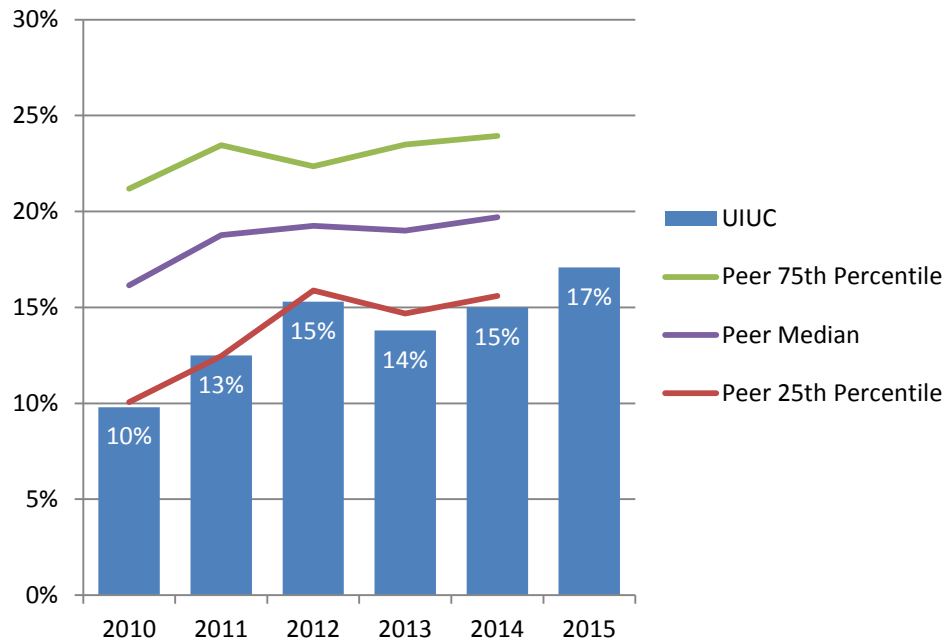
University of Illinois at Urbana-Champaign and Peer Institutions' First-Time Transfers Enrollment Fall 2010 – Fall 2015

Institution	2010	2011	2012	2013	2014	2015
University of Illinois at Urbana-Champaign	1,168	1,398	1,350	1,343	1,331	1,381
University of California - Berkeley	2,195	2,336	2,182	2,241	2,187	
University of California - Los Angeles	3,228	3,116	3,173	2,821	3,167	
University of California - San Diego	2,567	2,795	2,228	2,699	2,459	
University of Michigan - Ann Arbor	928	874	905	966	929	
University of North Carolina - Chapel Hill	922	791	845	876	884	
University of Texas - Austin	2,452	2,492	2,579	2,597	2,307	
University of Virginia	631	621	599	671	665	
University of Washington	1,623	2,001	1,774	1,503	1,927	
University of Wisconsin-Madison	1,304	1,326	1,227	1,092	771	

Data Source: IPEDS Data Center.



Percent First-Time Transfers from Underrepresented* Groups Fall 2010 – Fall 2015

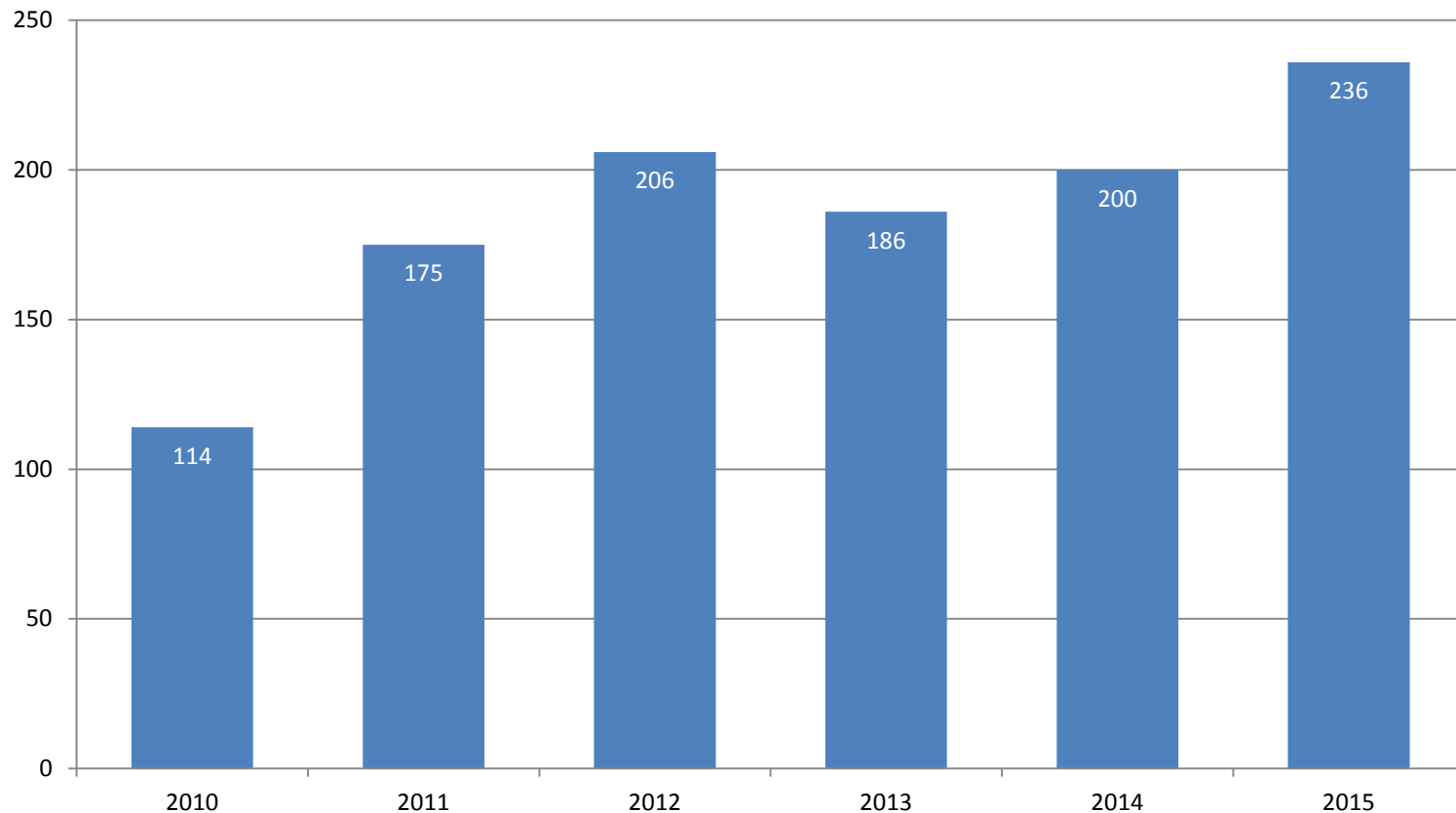


The percent of first-time transfers from underrepresented groups at the University of Illinois at Urbana-Champaign is lower than its peer median.

* Includes American Indian, Black, Hispanic, Native Hawaiian/Other Pacific Islander, and multi-racial students.



Number of First-Time Transfers from Underrepresented* Groups Fall 2010 – Fall 2015



* Includes American Indian, Black, Hispanic, Native Hawaiian/Other Pacific Islander, and multi-racial students.

Overview

Areas of Strength/Accomplishments

- Illinois continues to serve the State of Illinois by enrolling one of the largest freshmen classes and one of the highest percentage of resident students in our peer group, while matching the academic quality of peers with much smaller enrollments.
- Transfer enrollments and the percent of transfer students from underrepresented groups has nearly doubled in five years.

Areas for Improvement

- Improve selectivity by increasing applications from qualified students and continue increasing the yield of admitted students
- Continue efforts to enroll more freshmen and transfer students from underrepresented groups



Strategy to Address Areas for Improvement

- Intensify scholarship fundraising to help offset our high cost of attendance
- Continue our role in the creation of the Coalition Application (a competitor to the Common Application that will be designed for highly selective universities)
- Implement a new cutting-edge recruitment management system (Slate)
- Welcome a new director of Undergraduate Admissions



Areas to Watch

- Potential cuts to the Monetary Award Program (MAP grants)
- Large budget cuts may impact applications, yields and enrollments if families perceive the cuts will impact the quality of education or support services provided at Illinois
- Implementation of “prior-prior year” for financial aid processing