

University of Illinois at Springfield

Dashboard Indicators

ADMISSIONS, STUDENT QUALIFICATIONS, TRANSFER ENROLLMENTS UPDATES BY:
UNIVERSITY OFFICE FOR PLANNING AND BUDGETING

PRESENTED BY:
CHANCELLOR SUSAN J. KOCH
MAY 29, 2013

Peer Groups



University of Illinois at Springfield

Auburn University - Montgomery

Clark University*

College of Charleston

Georgia College and State University

Iona College*

Lake Superior State University

Marist College*

Northern Michigan University

Shippensburg University of Pennsylvania

State University of New York at Brockport

Trinity University (San Antonio, TX)*

Union College (Schenectady, NY)*

University of South Dakota

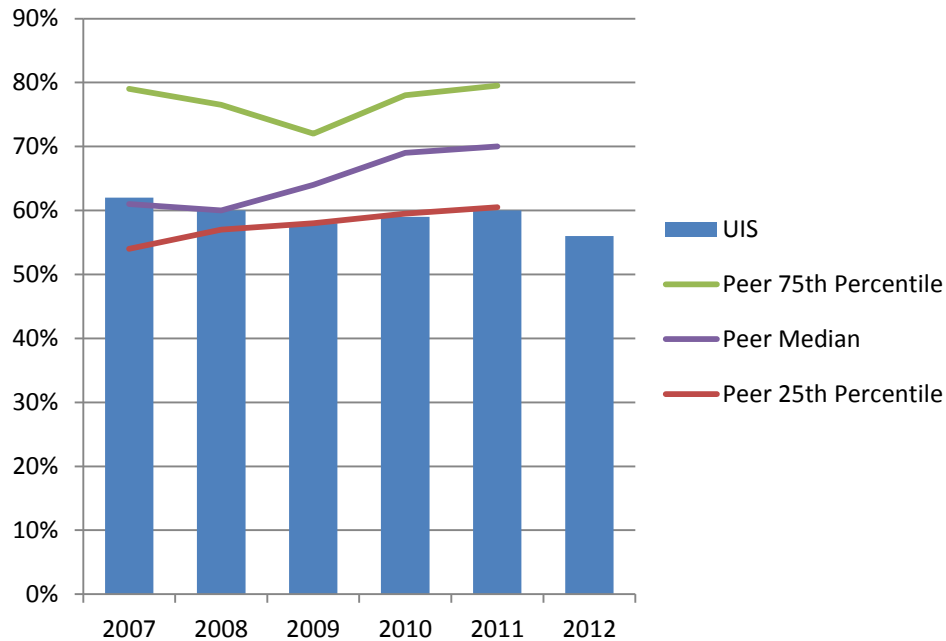
University of Wisconsin - Green Bay

* Private Institution

Admissions, Student Qualifications and Transfer Enrollments



Percent First-Time Freshmen Applicants Admitted* Fall 2007 – Fall 2012

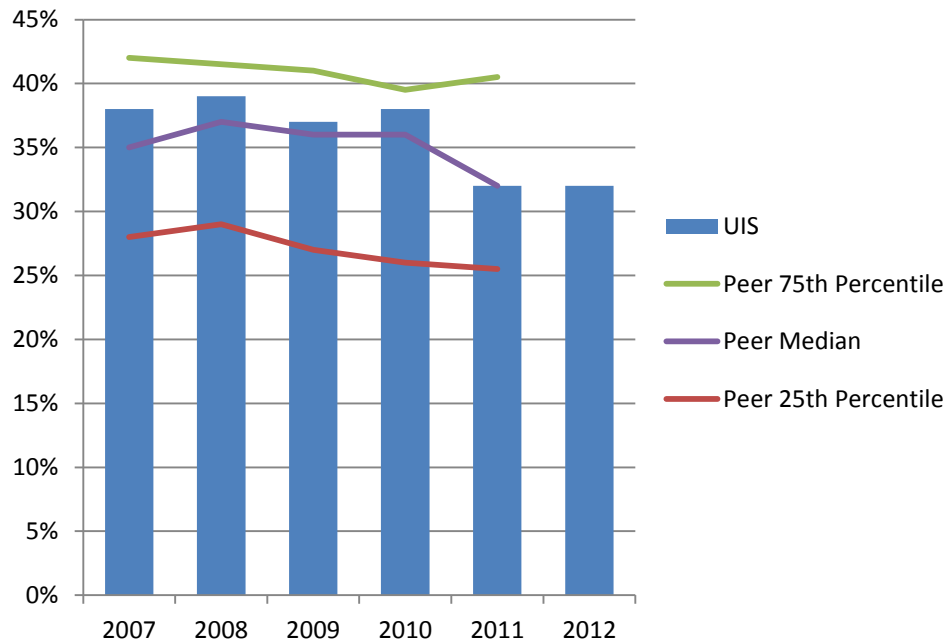


University of Illinois at Springfield admits a lower percent of freshmen applicants compared to the peer median.

* Percent Admitted = Percent of (total admits divided by total applicants).

Percent First-Time Freshmen Admissions Yield*

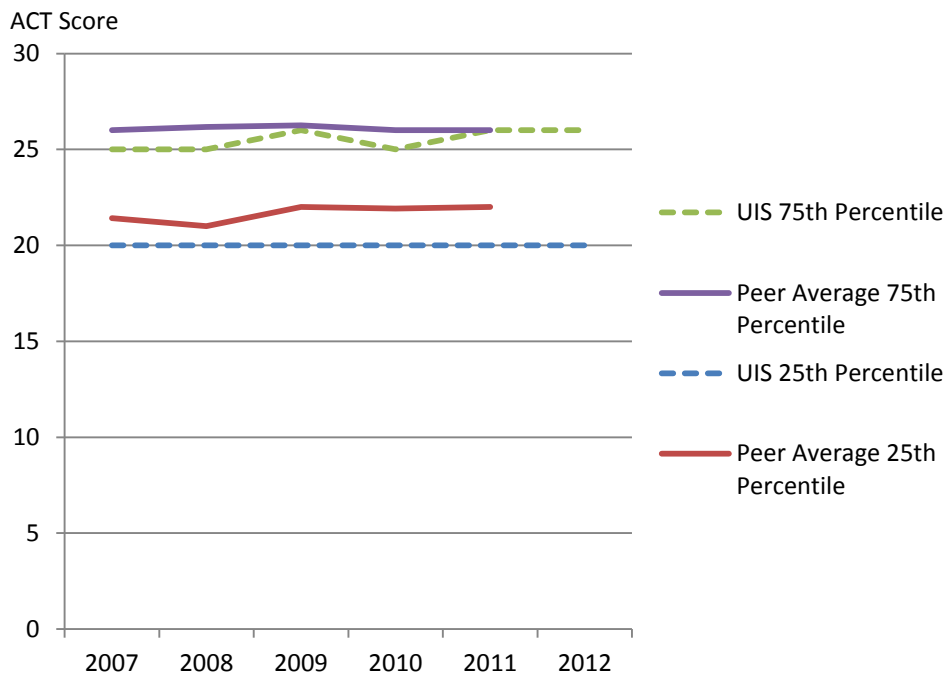
Fall 2007 – Fall 2012



University of Illinois at Springfield has an admissions yield similar to the peer median.

* Admissions Yield = Percent of (total enrolled divided by total admits).

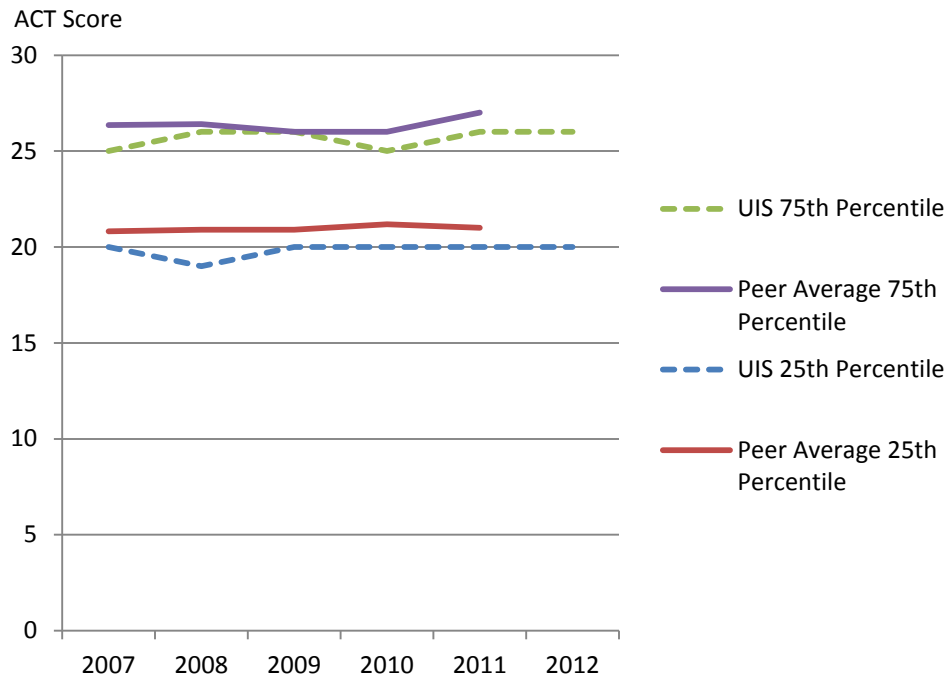
Entering Freshmen ACT Composite Scores 25th and 75th Percentile Fall 2007 – Fall 2012



The 75th percentile ACT score of entering freshmen at the University of Illinois at Springfield is on par with the peer averages; the 25th percentile ACT score is slightly below the peer averages.

Note: Excludes Iona College, Shippensburg University of Pennsylvania, Clark University, Marist College, and Union College due to lack of available data. Fewer students at peer institutions submit ACT scores.

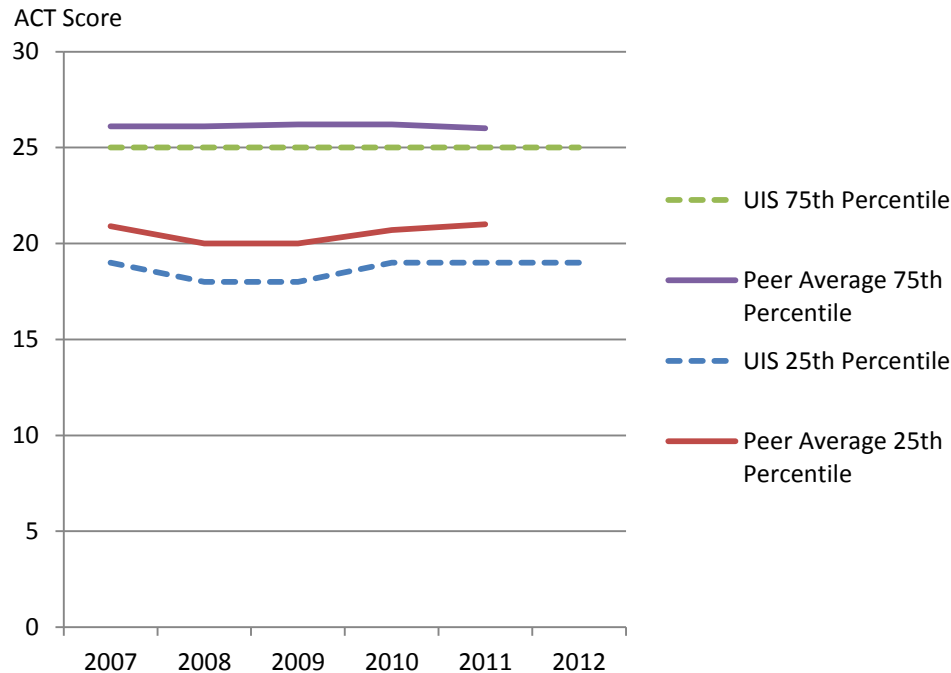
Entering Freshmen ACT English Score 25th and 75th Percentile Fall 2007 – Fall 2012



ACT English scores of entering freshmen at the University of Illinois at Springfield are slightly below the peer averages.

Note: Excludes Iona College, Shippensburg University of Pennsylvania, Clark University, Marist College, and Union College due to lack of available data. Fewer students at peer institutions submit ACT scores.

Entering Freshmen ACT Math Score 25th and 75th Percentile Fall 2007 – Fall 2012



ACT Math scores of entering freshmen at the University of Illinois at Springfield are slightly below the peer averages.

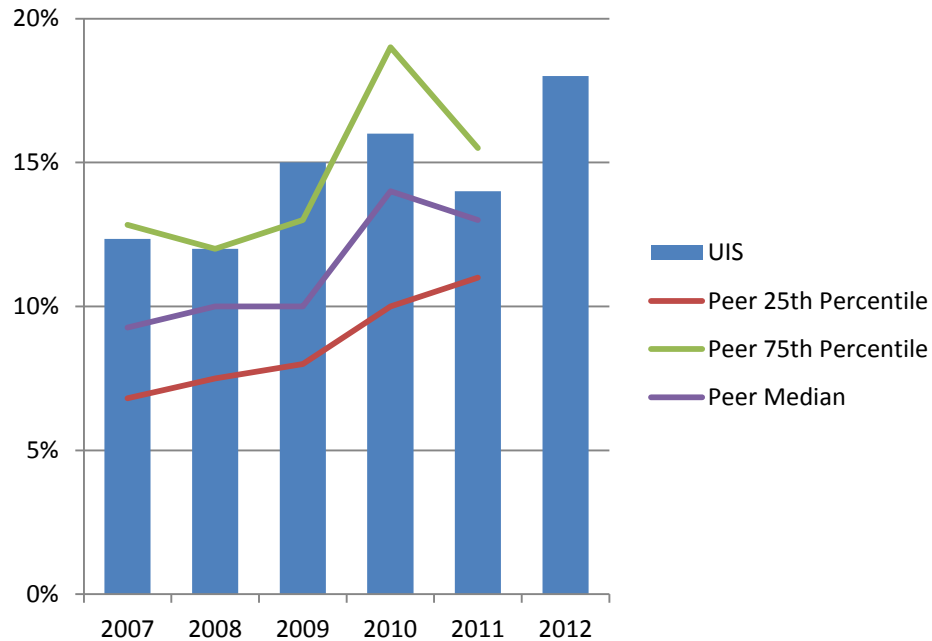
Note: Excludes Iona College, Shippensburg University of Pennsylvania, Clark University, Marist College, and Union College due to lack of available data. Fewer students at peer institutions submit ACT scores.

University of Illinois at Springfield and Peer Institutions First-Time Transfers Enrollment Fall 2007 – Fall 2012

	2007	2008	2009	2010	2011	2012
University of Illinois at Springfield	624	661	649	653	606	637
Auburn University at Montgomery	88	325	333	399	358	
Clark University	72	59	32	56	70	
College of Charleston	685	707	724	805	756	
Georgia College and State University	428	416	455	419	402	
Iona College	123	103	105	97	103	
Lake Superior State University	259	270	225	228	297	
Marist College	274	312	303	290	167	
Northern Michigan University	459	431	523	570	577	
Shippensburg University of Pennsylvania	380	371	458	447	414	
The College at Brockport	907	919	961	1,042	961	
Trinity University (San Antonio, TX)	26	20	28	23	21	
Union College (Schenectady, NY)	15	33	21	26	28	
University of South Dakota	931	586	701	772	820	
University of Wisconsin-Green Bay	540	587	592	586	628	

Data Source: IPEDS Data Center.

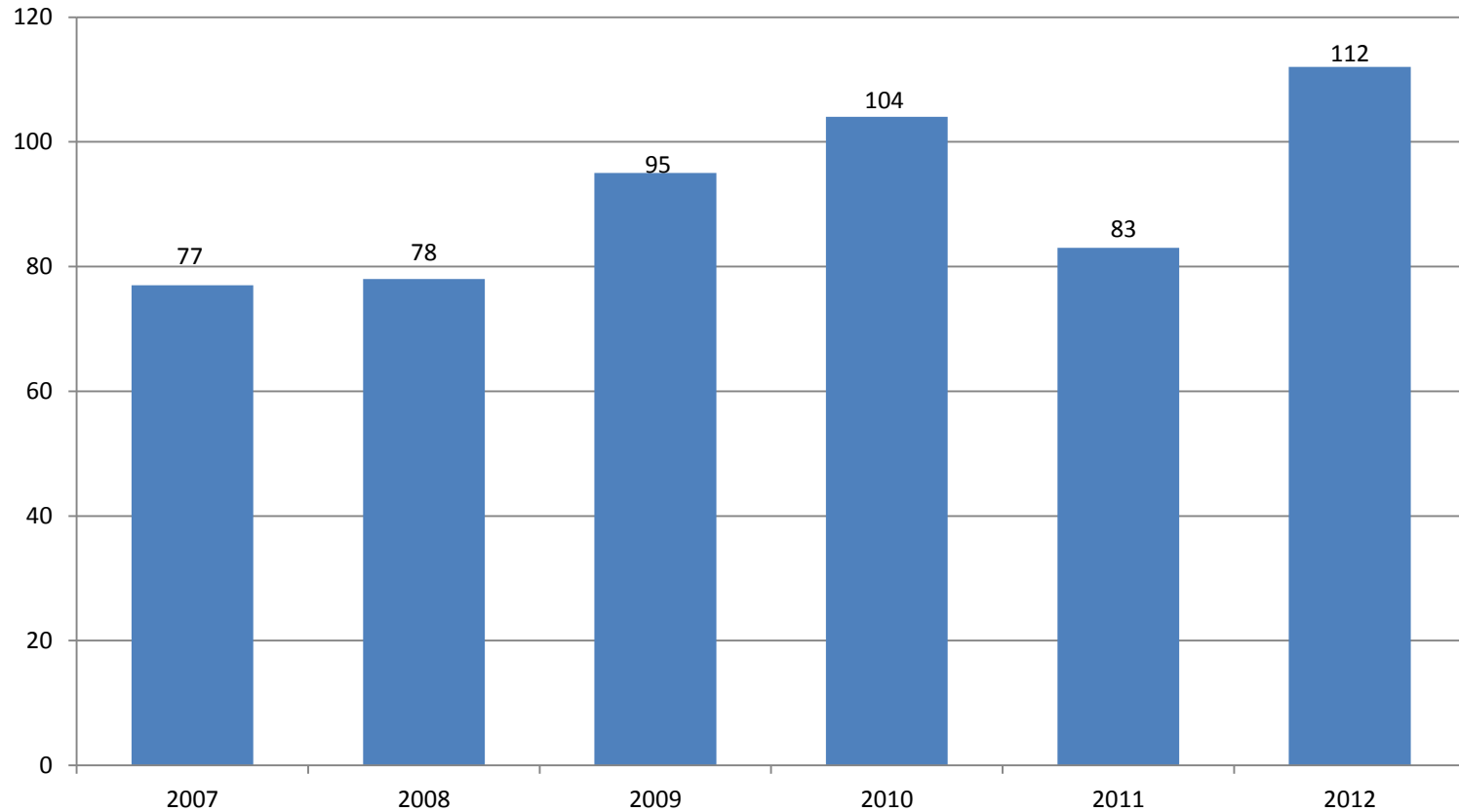
Percent First-Time Transfers from Underrepresented* Groups Fall 2007 – Fall 2012



The percent of first-time transfers from underrepresented groups at the University of Illinois at Springfield is higher than its peer median.

* Includes Black, Hispanic, American Indian, Native Hawaiian/Other Pacific Islander, and multi-racial students.

Number of First-Time Transfers from Underrepresented* Groups Fall 2007 – Fall 2012



* Includes Black, Hispanic, American Indian, Native Hawaiian/Other Pacific Islander, and multi-racial students.

Successes and Highlights



600 high schools were visited by the UIS Admissions staff in 2012-13.

24 is the average ACT score of the UIS freshmen who have made enrollment deposits for fall 2013. That is a full **one-point increase** from fall 2012.

19 students were President's Award Program recipients in fall 2012, **the largest number to date** for the UIS campus.

44% of the UIS fall 2012 freshman class self-identified as a racial or ethnic minority.

36% of the fall 2012 freshman Capitol Honors class self-identified as racial or ethnic minorities.

UIS **online students** were enrolled from **77 Illinois counties, 47 states, and 10 countries** in the spring semester, 2013.

Goals



1. Increase the size of the freshman class
2. Increase the number of transfer students from community colleges
3. Improve the yield of highly qualified students
4. Continue to recruit a diverse student body

Action Items



- ❖ Increase scholarship support for students
 - ❖ Continue recruitment in targeted high schools
 - ❖ Enhance relationships with targeted community colleges
 - ❖ Complete the UIS student union project
 - ☐ Add academic programs in high-interest areas
-
- ❖ time-frame (e.g. 1-2 years)
 - ☐ time-frame (e.g. 2-5 years)

Questions?

