

University of Illinois at Springfield

Dashboard Indicators

ADMISSIONS, STUDENT QUALIFICATIONS, TRANSFER ENROLLMENTS UPDATES BY:
UNIVERSITY OFFICE FOR PLANNING AND BUDGETING

APRIL 9, 2015

PRESENTED BY:
CHANCELLOR KOCH

MAY 7, 2015

Peer Groups



University of Illinois at Springfield

Auburn University - Montgomery

Clark University*

College of Charleston

Georgia College and State University

Iona College*

Lake Superior State University

Marist College*

Northern Michigan University

Shippensburg University of Pennsylvania

State University of New York at Brockport

Trinity University (San Antonio, TX)*

Union College (Schenectady, NY)*

University of South Dakota

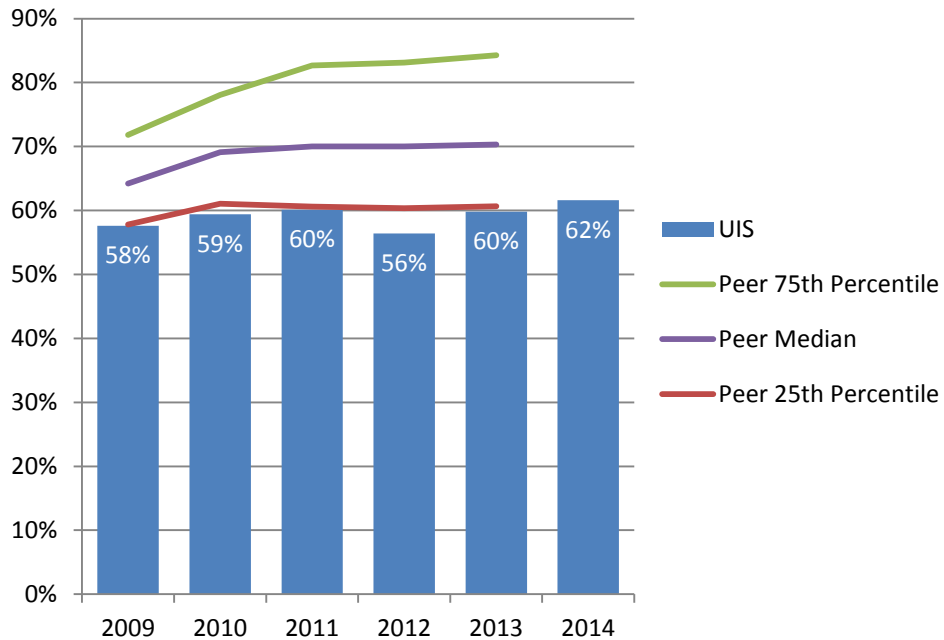
University of Wisconsin - Green Bay

* Private Institution

Admissions, Student Qualifications and Transfer Enrollments



Percent First-Time Freshmen Applicants Admitted* Fall 2009 – Fall 2014

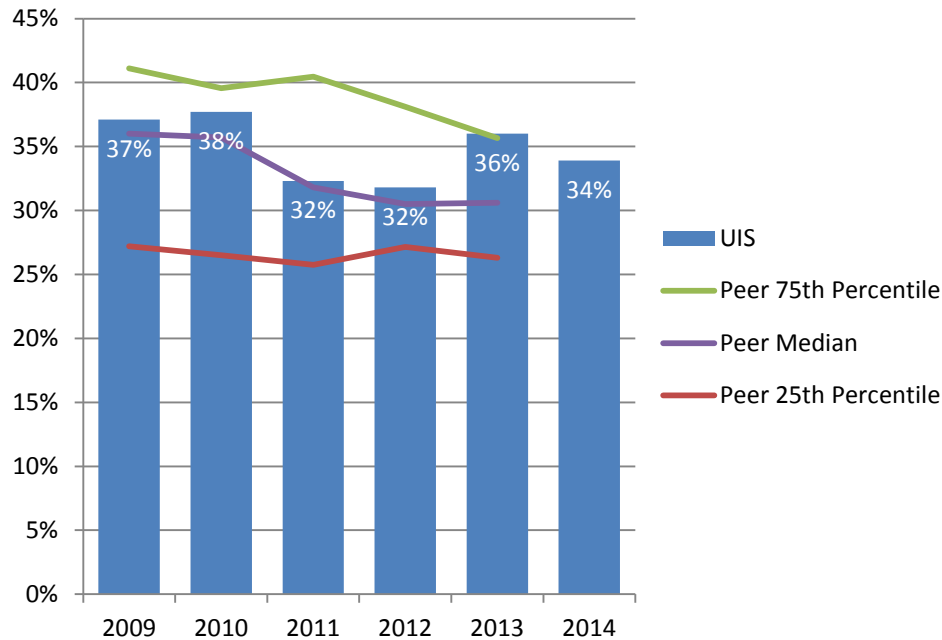


University of Illinois at Springfield admits a lower percent of freshmen applicants compared to the peer median.

* Percent Admitted = Percent of (total admits divided by total applicants).

Percent First-Time Freshmen Admissions Yield*

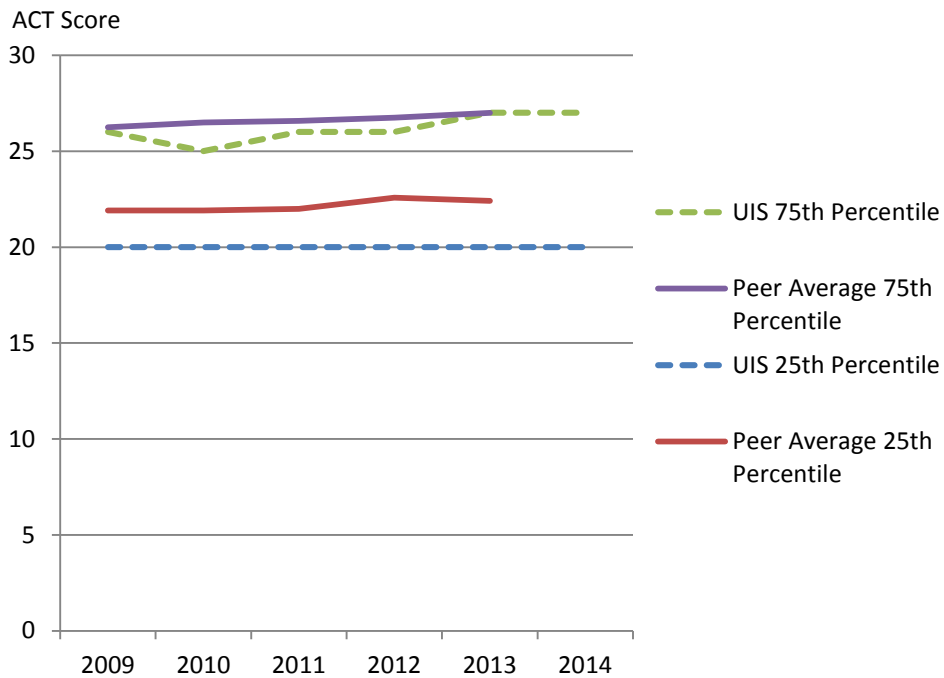
Fall 2009 – Fall 2014



University of Illinois at Springfield has an admissions yield higher than its peer median.

* Admissions Yield = Percent of (total enrolled divided by total admits).

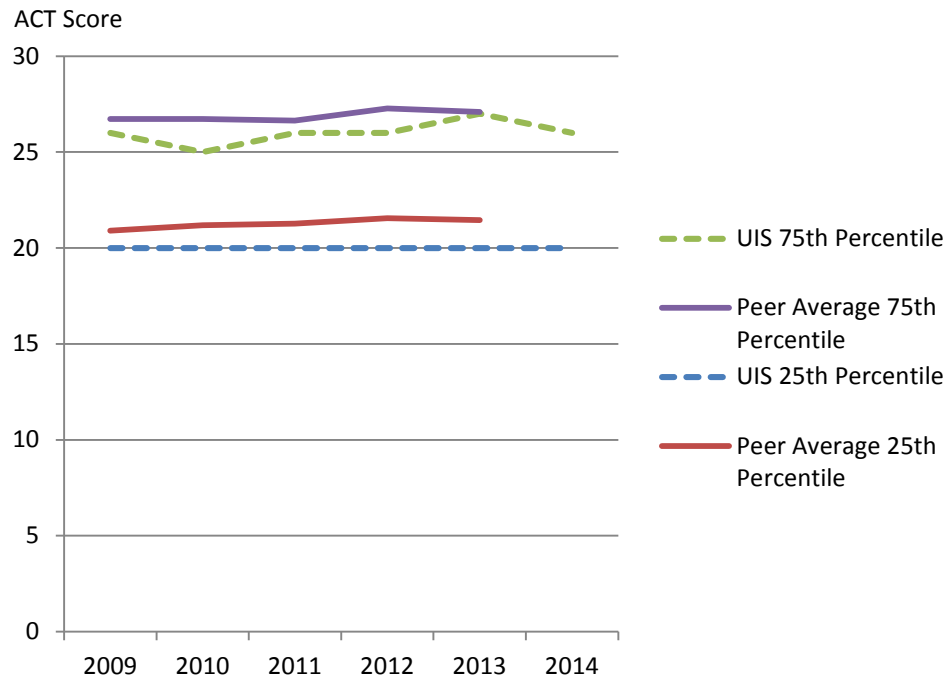
Entering Freshmen ACT Composite Scores 25th and 75th Percentile Fall 2009 – Fall 2014



The 75th percentile ACT score of entering freshmen at the University of Illinois at Springfield is on par with the peer averages; the 25th percentile ACT score is slightly below the peer averages.

Note: Excludes Iona College and Shippensburg University of Pennsylvania due to lack of available data. Fewer students at peer institutions submit ACT scores.

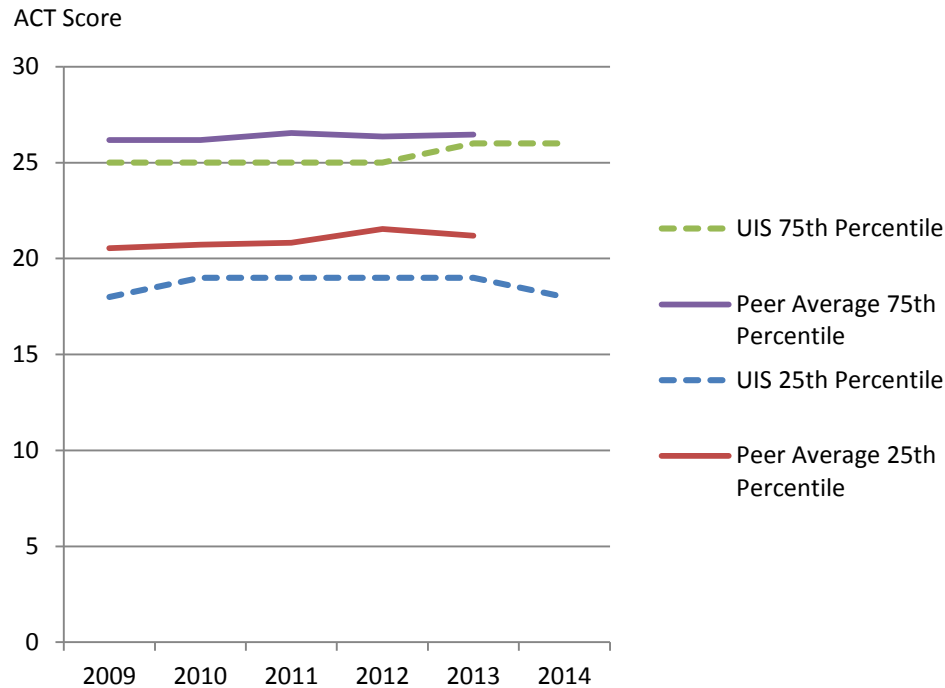
Entering Freshmen ACT English Score 25th and 75th Percentile Fall 2009 – Fall 2014



ACT English scores of entering freshmen at the University of Illinois at Springfield are slightly below the peer averages.

Note: Excludes Iona College, Marist College, and Shippensburg University of Pennsylvania due to lack of available data. Fewer students at peer institutions submit ACT scores.

Entering Freshmen ACT Math Score 25th and 75th Percentile Fall 2009 – Fall 2014



ACT Math scores of entering freshmen at the University of Illinois at Springfield are slightly below the peer averages.

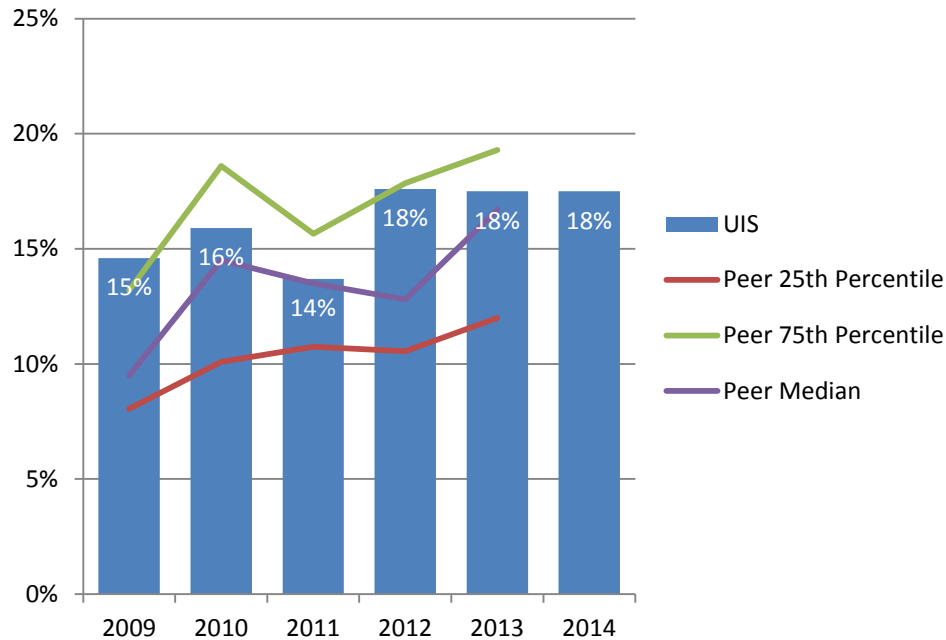
Note: Excludes Iona College, Marist College, and Shippensburg University of Pennsylvania due to lack of available data. Fewer students at peer institutions submit ACT scores.

University of Illinois at Springfield and Peer Institutions First-Time Transfers Enrollment Fall 2009 – Fall 2014

	<u>2009</u>	<u>2010</u>	<u>2011</u>	<u>2012</u>	<u>2013</u>	<u>2014</u>
University of Illinois at Springfield	649	653	606	637	639	594
Auburn University at Montgomery	333	399	358	299	434	
Clark University	32	56	70	41	51	
College of Charleston	724	805	756	731	747	
Georgia College and State University	455	419	402	345	355	
Iona College	105	97	103	89	117	
Lake Superior State University	225	228	297	236	220	
Marist College	303	290	167	188	149	
Northern Michigan University	523	570	577	545	502	
Shippensburg University of Pennsylvania	458	447	414	365	387	
The College at Brockport	961	1,042	961	971	976	
Trinity University (San Antonio, TX)	28	23	21	24	25	
Union College (Schenectady, NY)	21	26	28	20	23	
University of South Dakota	701	772	820	715	635	
University of Wisconsin-Green Bay	592	586	628	648	587	

Data Source: IPEDS Data Center.

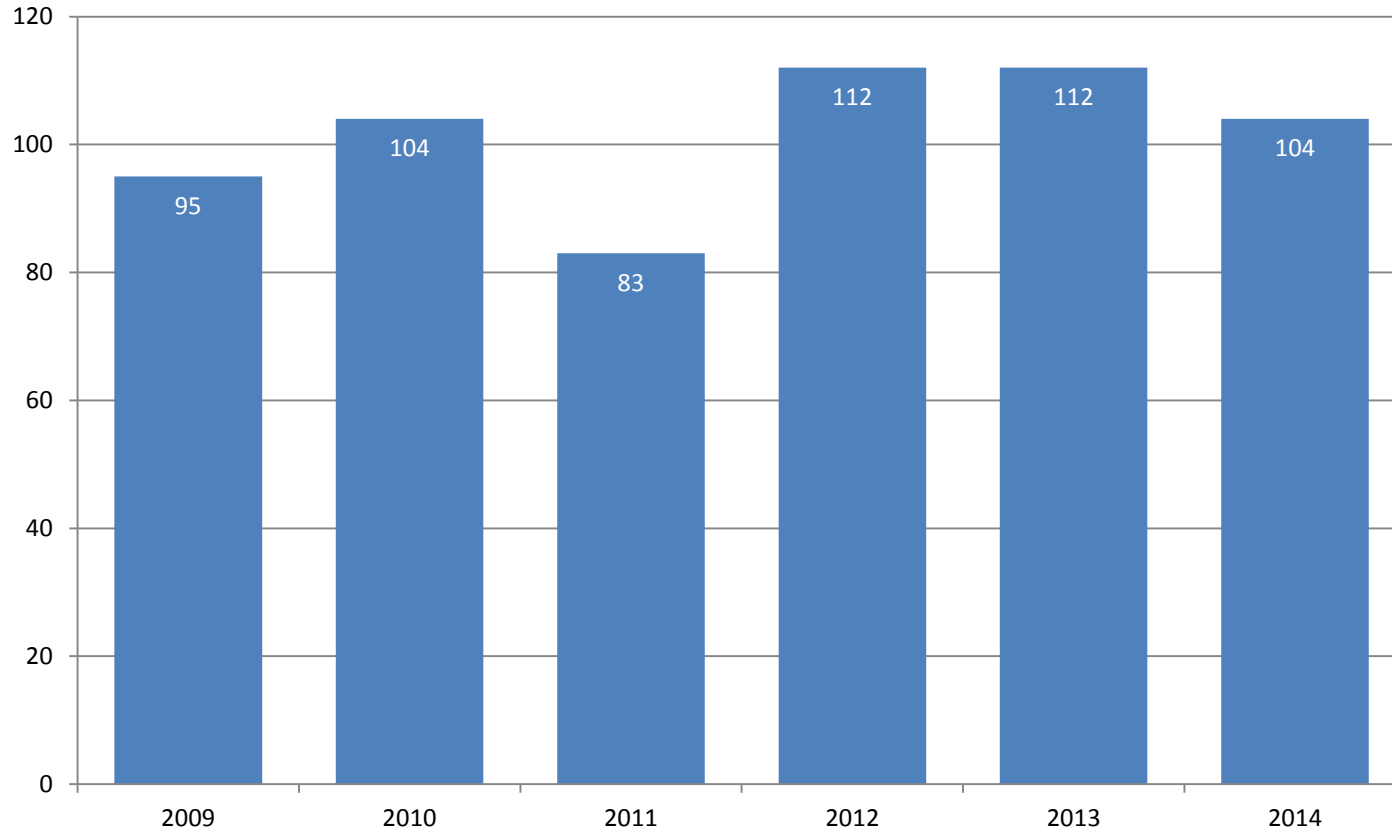
Percent First-Time Transfers from Underrepresented* Groups Fall 2009 – Fall 2014



The percent of first-time transfers from underrepresented groups at the University of Illinois at Springfield is higher than its peer median.

* Includes Black, Hispanic, American Indian, Native Hawaiian/Other Pacific Islander, and multi-racial students.

Number of First-Time Transfers from Underrepresented* Groups Fall 2009 – Fall 2014



* Includes Black, Hispanic, American Indian, Native Hawaiian/Other Pacific Islander, and multi-racial students.

Admissions, Student Qualifications and Transfer Enrollments: Goals



- Campus Goal
- Campus Goal

Action Items



❖ Campus Action Item

❑ Campus Action Item

❖ time-frame (e.g. 1-2 year)

❑ time-frame (e.g. 3-5 year)

Questions?

