

University of Illinois at Springfield

Dashboard Indicators

ENROLLMENTS, GRADUATION AND RETENTION RATES,
AND DEGREES AWARDED UPDATES BY:
UNIVERSITY OFFICE FOR PLANNING AND BUDGETING
OCTOBER 5, 2016

PRESENTED BY:
CHANCELLOR SUSAN J. KOCH
NOVEMBER 10, 2016

Reported to the Board of Trustees
November 10, 2016

Peer Groups



University of Illinois at Springfield

Auburn University - Montgomery

Clark University*

College of Charleston

Georgia College and State University

Iona College*

Lake Superior State University

Marist College*

Northern Michigan University

Shippensburg University of Pennsylvania

State University of New York at Brockport

Trinity University (San Antonio, TX)*

Union College (Schenectady, NY)*

University of South Dakota

University of Wisconsin - Green Bay

* Private Institution

Enrollments



University of Illinois at Springfield and Peer Institutions Fall Term Enrollment

Fall 2010 – Fall 2016

Institution	All Student Total						Undergraduate						Graduate and Professional					
	2010	2011	2012	2013	2014	2015	2010	2011	2012	2013	2014	2015	2010	2011	2012	2013	2014	2015
University of Illinois at Springfield	5,174	5,137	5,048	5,137	5,431	5,402	3,197	3,112	3,054	3,039	3,038	2,937	1,977	2,025	1,994	2,098	2,393	2,465
Auburn University - Montgomery	5,817	5,305	5,005	5,084	5,057		4,829	4,403	4,240	4,322	4,377		988	902	765	762	680	
Clark University	3,451	3,462	3,503	3,551	3,423		2,317	2,311	2,352	2,380	2,301		1,134	1,151	1,151	1,171	1,122	
College of Charleston	11,532	11,649	11,723	11,619	11,456		10,121	10,461	10,506	10,488	10,440		1,411	1,188	1,217	1,131	1,016	
Georgia College and State University	6,737	6,636	6,444	6,551	6,772		5,715	5,635	5,568	5,729	5,927		1,022	1,001	876	822	845	
Iona College	4,123	4,065	4,241	4,241	3,909		3,256	3,189	3,462	3,539	3,301		867	876	779	702	608	
Lake Superior State University	2,662	2,805	2,590	2,435	2,407		2,588	2,727	2,582	2,429	2,406		74	78	8	6	1	
Marist College	6,140	6,303	6,377	6,365	6,356		5,189	5,442	5,560	5,566	5,516		951	861	817	799	840	
Northern Michigan University	9,417	9,405	9,159	8,918	8,781		8,719	8,712	8,474	8,221	8,001		698	693	685	697	780	
Shippensburg University of Pennsylvania	8,326	8,183	7,724	7,548	7,355		7,143	7,132	6,712	6,550	6,305		1,183	1,051	1,012	998	1,050	
SUNY College at Brockport	8,589	8,413	8,271	8,128	8,106		7,297	7,166	7,133	7,090	7,040		1,292	1,247	1,138	1,038	1,066	
Trinity University	2,498	2,535	2,458	2,358	2,432		2,296	2,331	2,286	2,161	2,241		202	204	172	197	191	
Union College	2,197	2,220	2,241	2,246	2,242		2,197	2,220	2,241	2,246	2,242		--	--	--	--	--	
University of South Dakota	10,151	9,970	10,284	10,235	10,061		7,220	7,473	7,690	7,633	7,541		2,931	2,497	2,594	2,602	2,520	
University of Wisconsin - Green Bay	6,636	6,671	6,801	6,668	6,927		6,389	6,451	6,622	6,445	6,674		247	220	179	223	253	

UIS Fall 2016 Total Enrollments

All Student Total: 5,428

Undergraduate: 2,959

Graduate: 2,469

Data Source: IPEDS Data Center. Includes on- and off-campus enrollments.

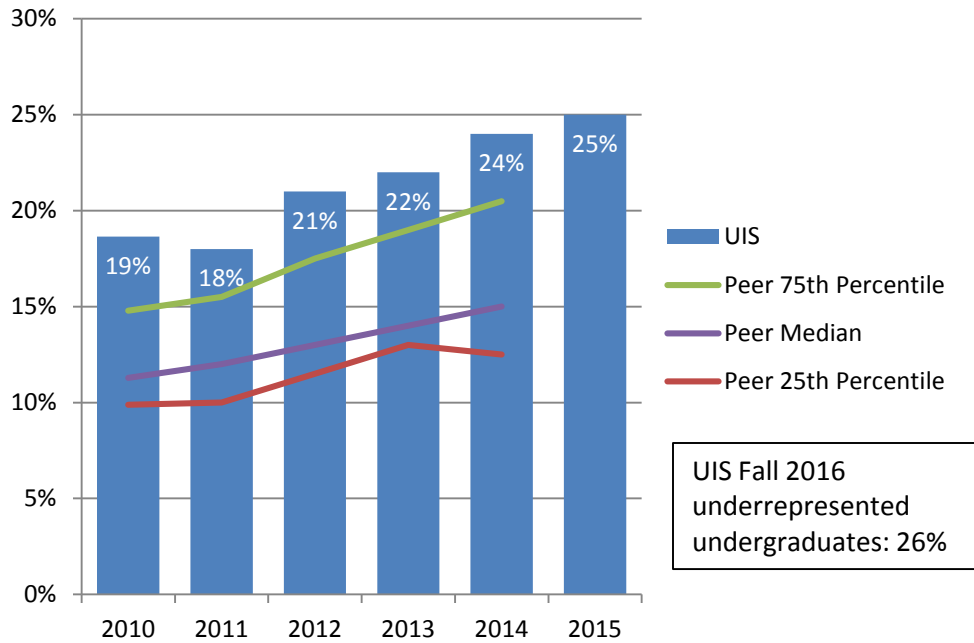
University of Illinois at Springfield and Peer Institutions First-Time Freshmen Enrollment Fall 2010 – Fall 2016

	2010	2011	2012	2013	2014	2015
University of Illinois at Springfield	294	241	270	316	305	268
Auburn University - Montgomery	930	831	679	671	694	
Clark University	578	546	594	621	552	
College of Charleston	2,010	2,334	2,138	2,116	2,166	
Georgia College and State University	1,203	1,209	1,311	1,395	1,465	
Iona College	871	812	722	922	802	
Lake Superior State University	514	499	439	409	461	
Marist College	1,088	1,174	1,098	1,149	1,127	
Northern Michigan University	1,659	1,745	1,638	1,665	1,595	
Shippensburg University of Pennsylvania	1,712	1,752	1,485	1,522	1,484	
The College at Brockport	1,048	1,050	1,085	1,080	1,090	
Trinity University (San Antonio, TX)	587	636	596	534	655	
Union College (Schenectady, NY)	554	572	591	559	570	
University of South Dakota	1,175	1,248	1,353	1,342	1,247	
University of Wisconsin - Green Bay	906	910	921	809	770	

UIS Fall 2016 first-time freshmen: 300

Data Source: IPEDS Data Center. Includes on- and off-campus enrollments.

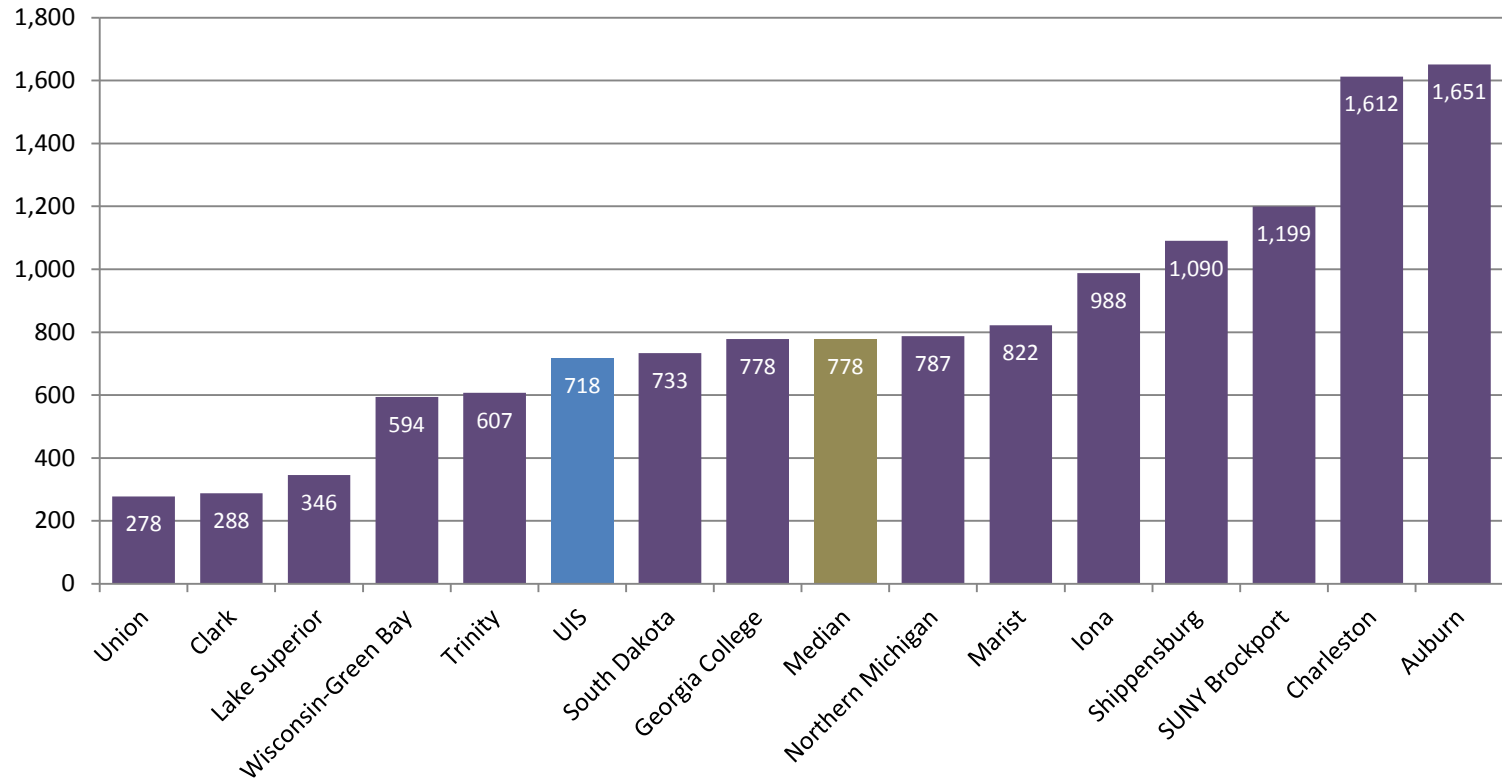
Percent Enrolled Undergraduate Students from Underrepresented* Groups Fall 2010 – Fall 2016



The percent of undergraduate students from underrepresented groups at the University of Illinois at Springfield is higher than the peer median.

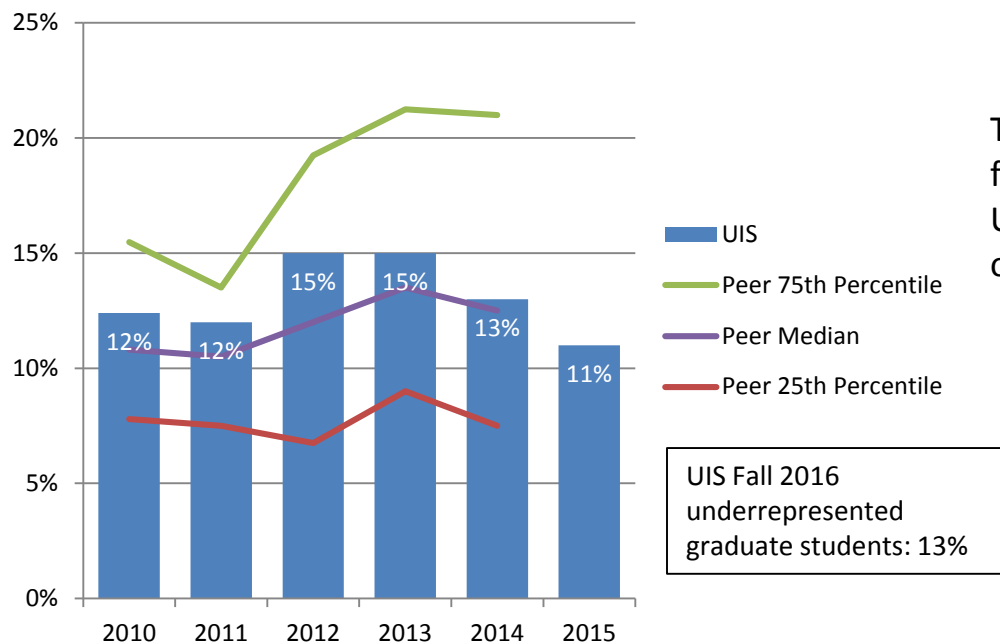
* Includes Black, Hispanic, American Indian, Native Hawaiian/Other Pacific Islander, and multi-racial students.

Enrolled Undergraduate Students from Underrepresented* Groups Fall 2014



* Includes Black, Hispanic, American Indian, Native Hawaiian/Other Pacific Islander, and multi-racial students.

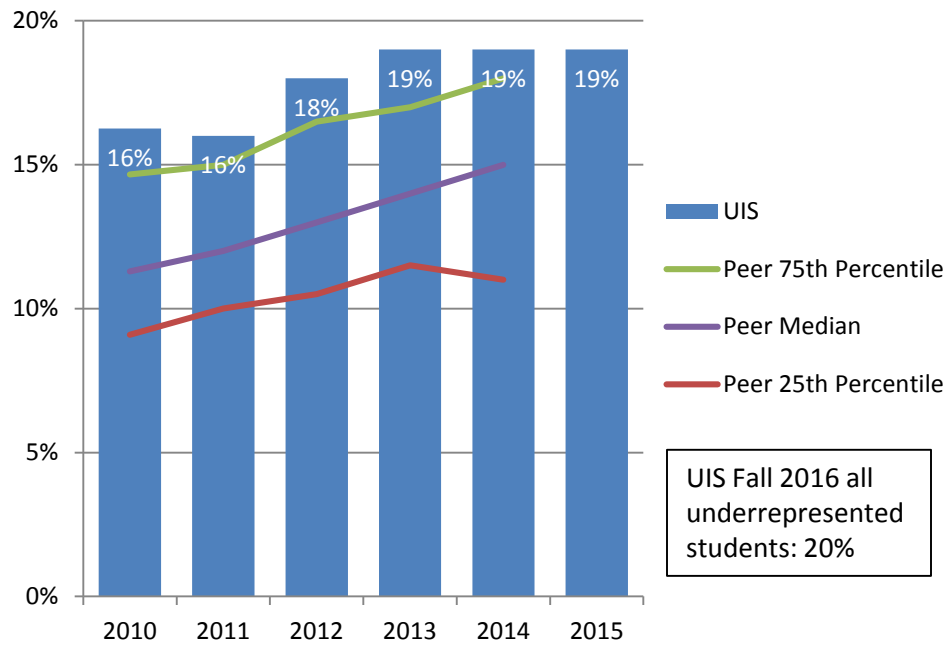
Percent Enrolled Graduate and Professional Students from Underrepresented* Groups Fall 2010 – Fall 2016



The percent of graduate students from underrepresented groups at the University of Illinois at Springfield is on par with the peer median.

* Includes Black, Hispanic, American Indian, Native Hawaiian/Other Pacific Islander, and multi-racial students.

Percent All Enrolled Students from Underrepresented* Groups Fall 2010 – Fall 2016



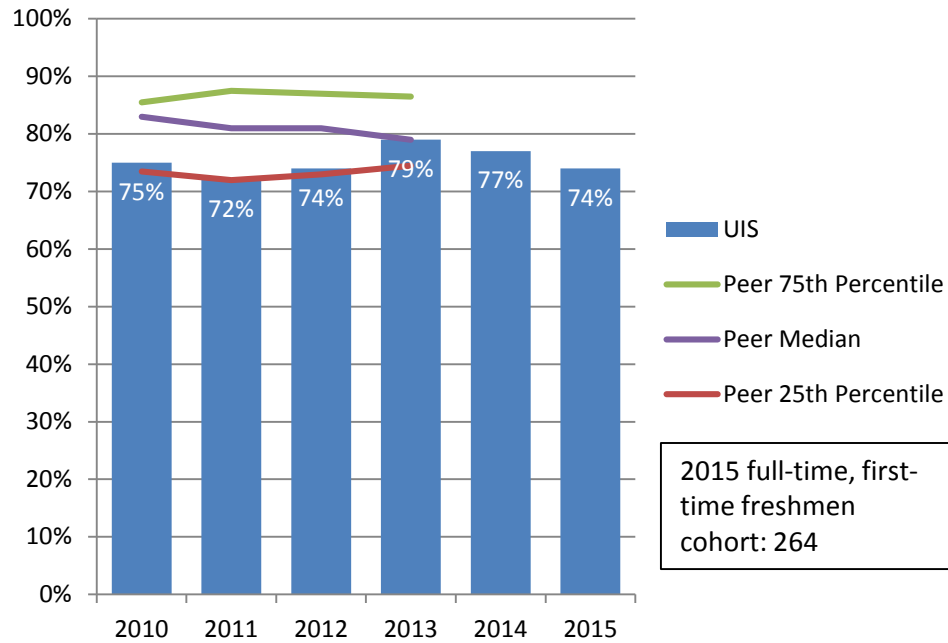
The percent of total students from underrepresented groups at the University of Illinois at Springfield has been consistently higher than its peer median.

* Includes Black, Hispanic, American Indian, Native Hawaiian/Other Pacific Islander, and multi-racial students.

Graduation and Retention Rates

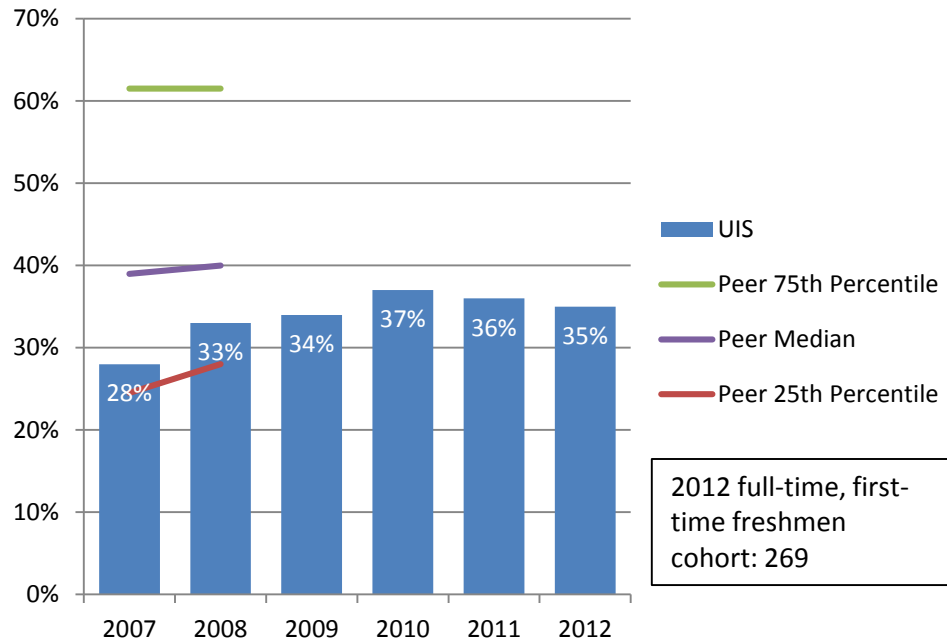


Freshman to Sophomore One-Year Retention Rates 2010 – 2015 Cohorts



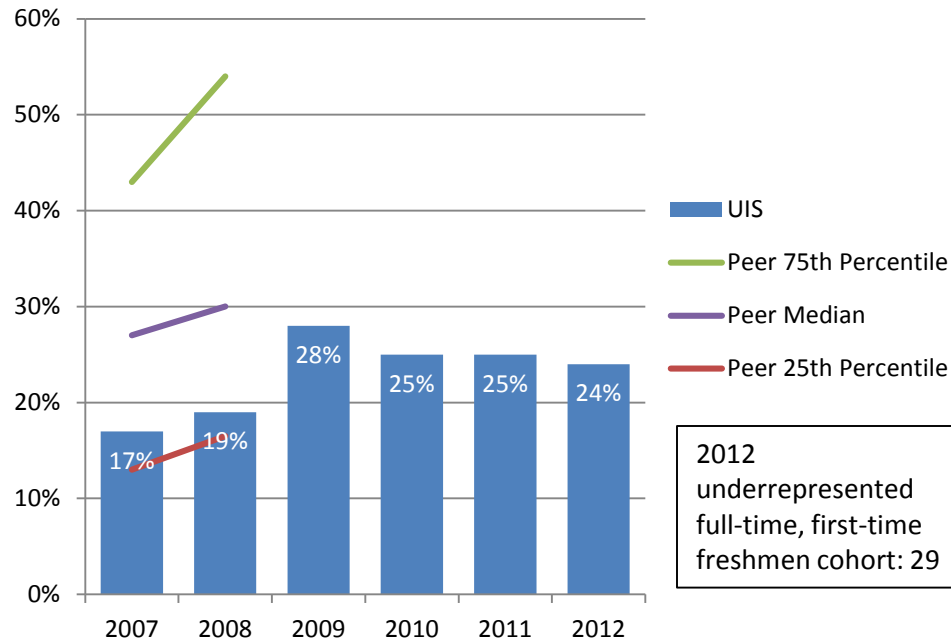
The freshmen retention rate at University of Illinois at Springfield is on par with the peer median.

First-Time Freshmen Four-Year Graduation Rates 2007 – 2012 Cohorts



University of Illinois at Springfield graduates a lower percent of undergraduate students within four years compared to its peer median.

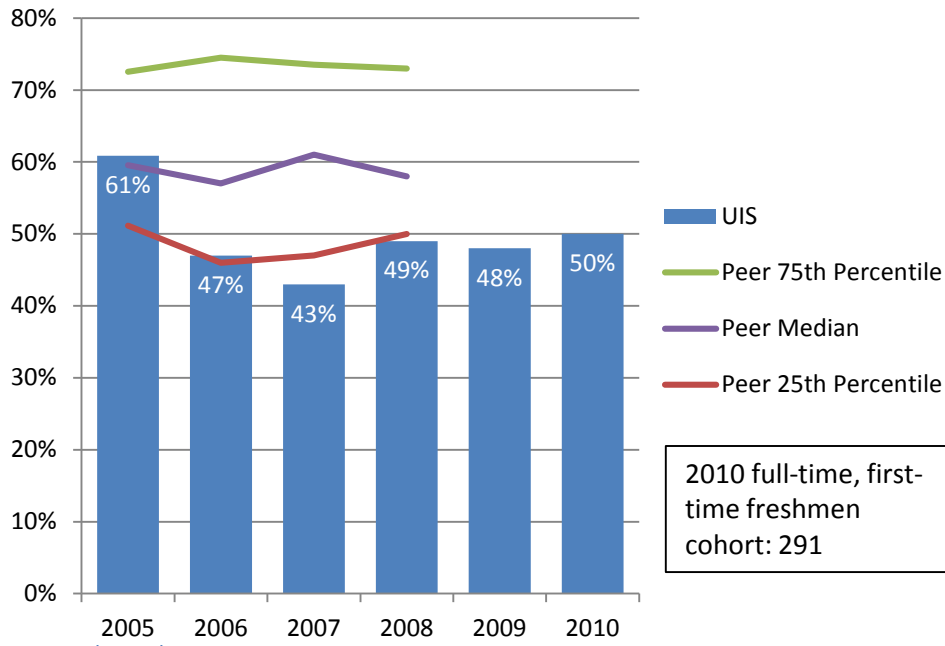
Percent First-Time Freshmen from Underrepresented* Groups Four-Year Graduation Rates 2007 – 2012 Cohorts



Compared to the peer median, the University of Illinois at Springfield graduates a lower percent of students from underrepresented groups within four years.

* Includes Black, Hispanic, American Indian, Native Hawaiian/Other Pacific Islander, and multi-racial students.

First-Time Freshmen Six-Year Graduation Rates 2005 – 2010 Cohorts

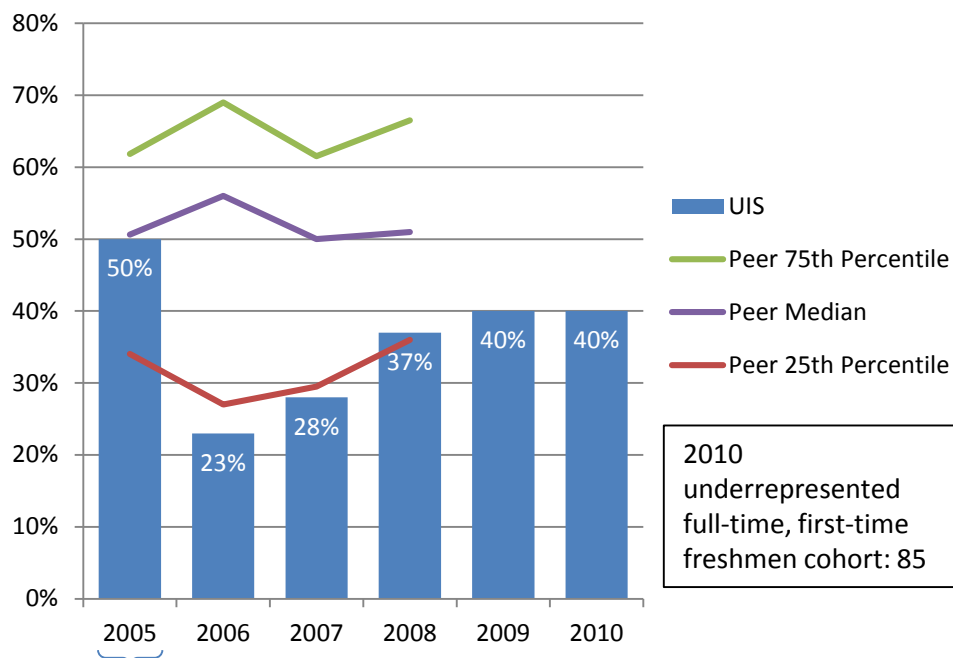


Capital Scholars only.

University of Illinois at Springfield graduates a lower percent of students within six years compared to its peer median.

2010 full-time, first-time freshmen cohort: 291

Percent First-Time Freshmen from Underrepresented* Groups Six-Year Graduation Rates 2005 – 2010 Cohorts



Compared to the peer median, the University of Illinois at Springfield graduates a lower percent of students from underrepresented groups within six years.

2010
underrepresented
full-time, first-time
freshmen cohort: 85

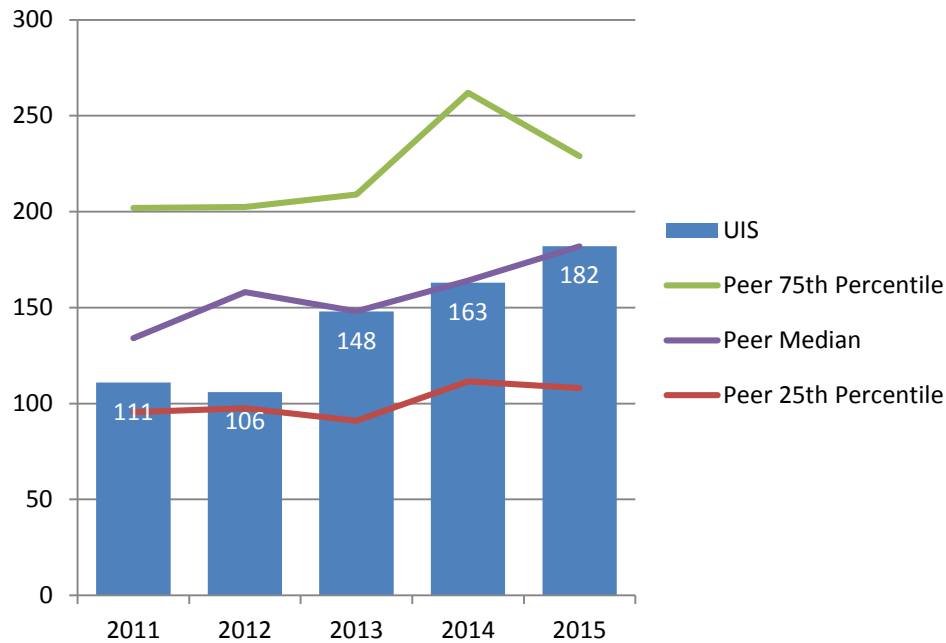
Capital Scholars only.

* Includes Black, Hispanic, American Indian, Native Hawaiian/Other Pacific Islander, and multi-racial students.

Degrees Awarded



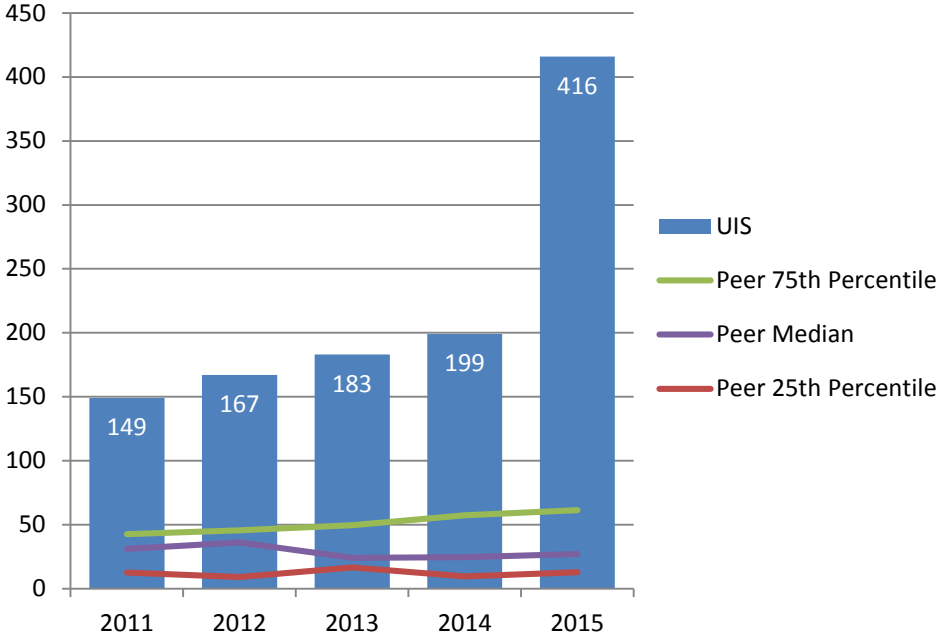
Number of Bachelor Degrees Granted in STEM* Fields FY 2011 – FY 2015



Since FY 2013, University of Illinois at Springfield granted a similar number of undergraduate degrees in STEM fields as its peer median.

* Science, Technology, Engineering, and Mathematics.

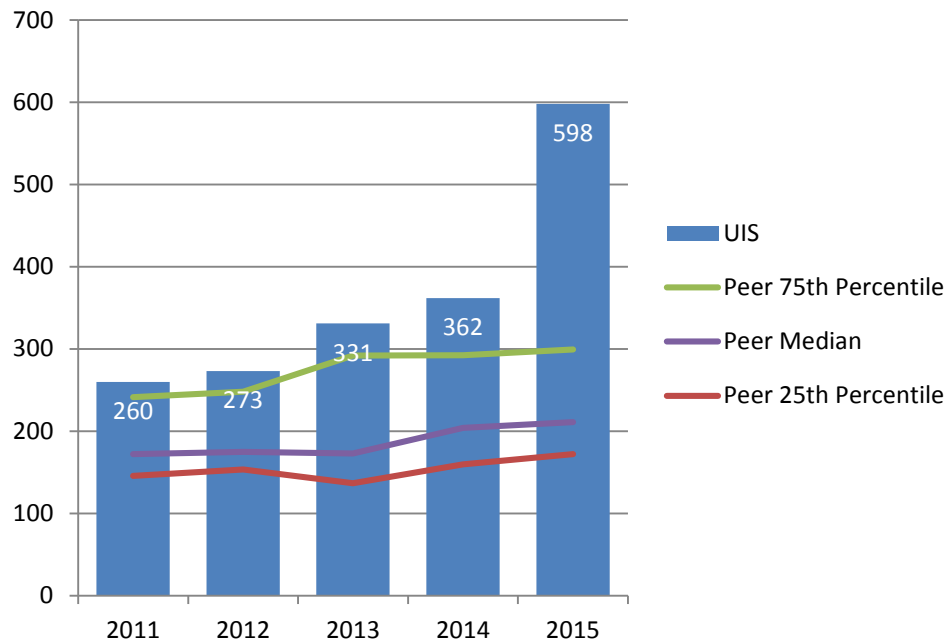
Number of Master and Doctoral Degrees Granted in STEM* Fields FY 2011 – FY 2015



University of Illinois at Springfield grants more graduate degrees in STEM fields than its peer median.

* Science, Technology, Engineering, and Mathematics.

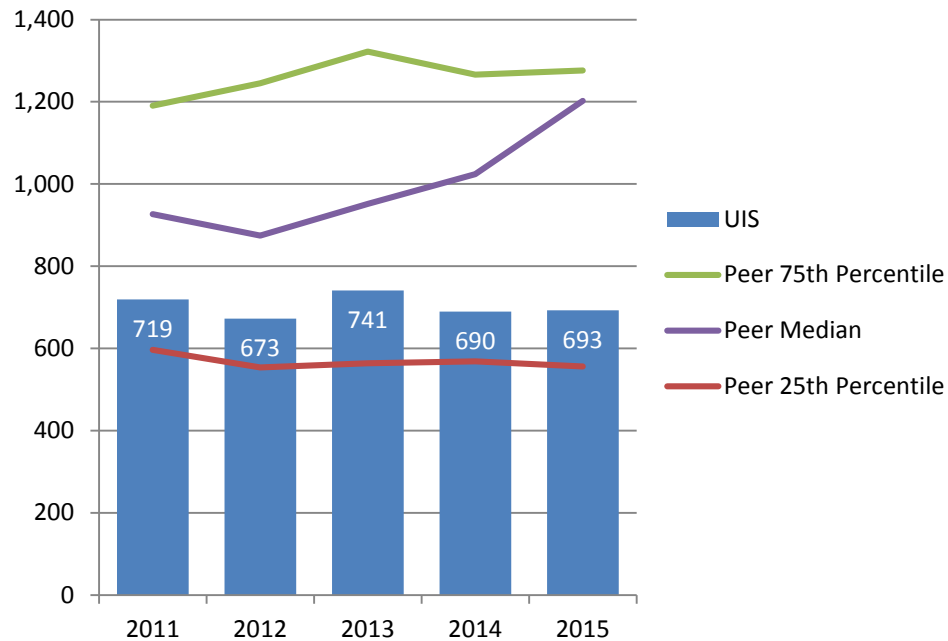
Number of Total Degrees Granted in STEM* Fields FY 2011 – FY 2015



In total, the University of Illinois at Springfield grants more degrees in STEM fields than its peer median.

* Science, Technology, Engineering, and Mathematics.

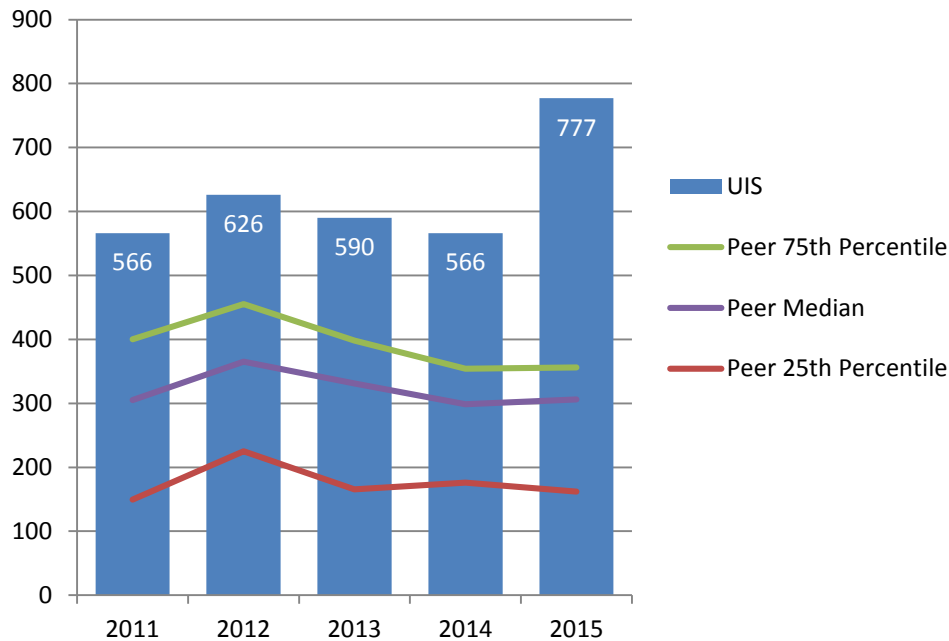
Number of Bachelor Degrees Granted FY 2011 – FY 2015



University of Illinois at Springfield grants fewer undergraduate degrees than its peer median.

Note: Only includes bachelor degrees, excludes associate degrees and certificates. Degrees awarded from July 1 to June 30 of each fiscal year.

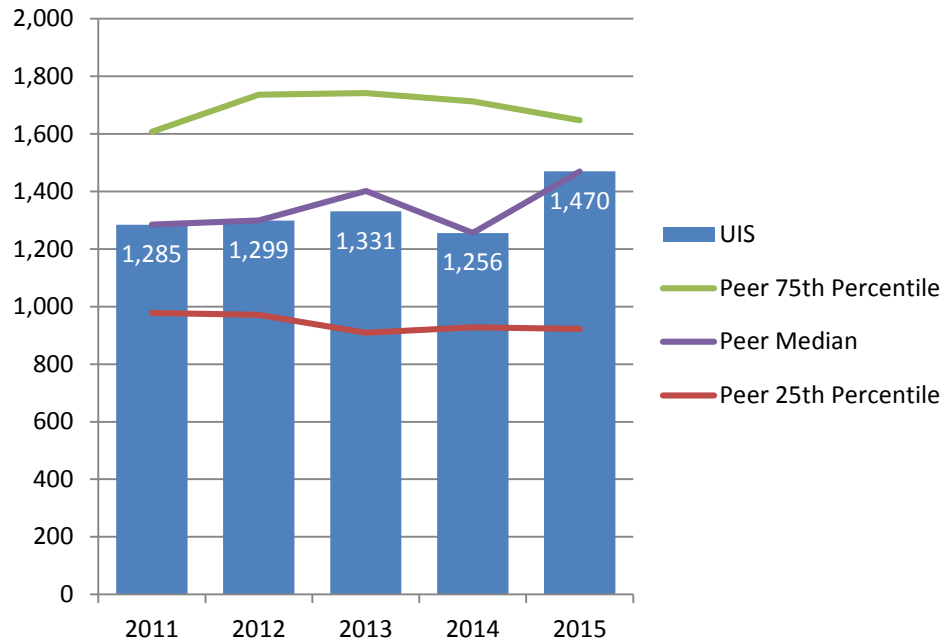
Number of Graduate and Professional Degrees Granted FY 2011 – FY 2015



University of Illinois at Springfield grants more graduate degrees than its peer median.

Note: Only includes master, doctoral, and professional degrees; excludes certificates. Degrees awarded from July 1 to June 30 of each fiscal year.

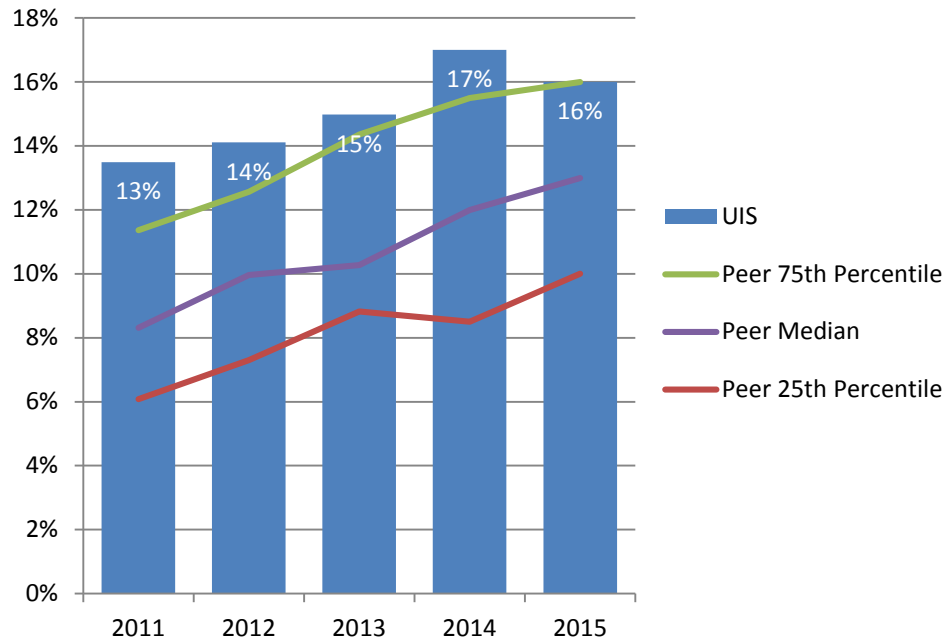
Number of Total Degrees Granted FY 2011 – FY 2015



In total, the University of Illinois at Springfield granted a similar number of degrees as its peer median.

Note: Only includes bachelor, master, doctoral, and professional degrees; excludes associate degrees and certificates. Degrees awarded from July 1 to June 30 of each fiscal year.

Percent Bachelor Degrees Granted to Students from Underrepresented* Groups FY 2011 – FY 2015

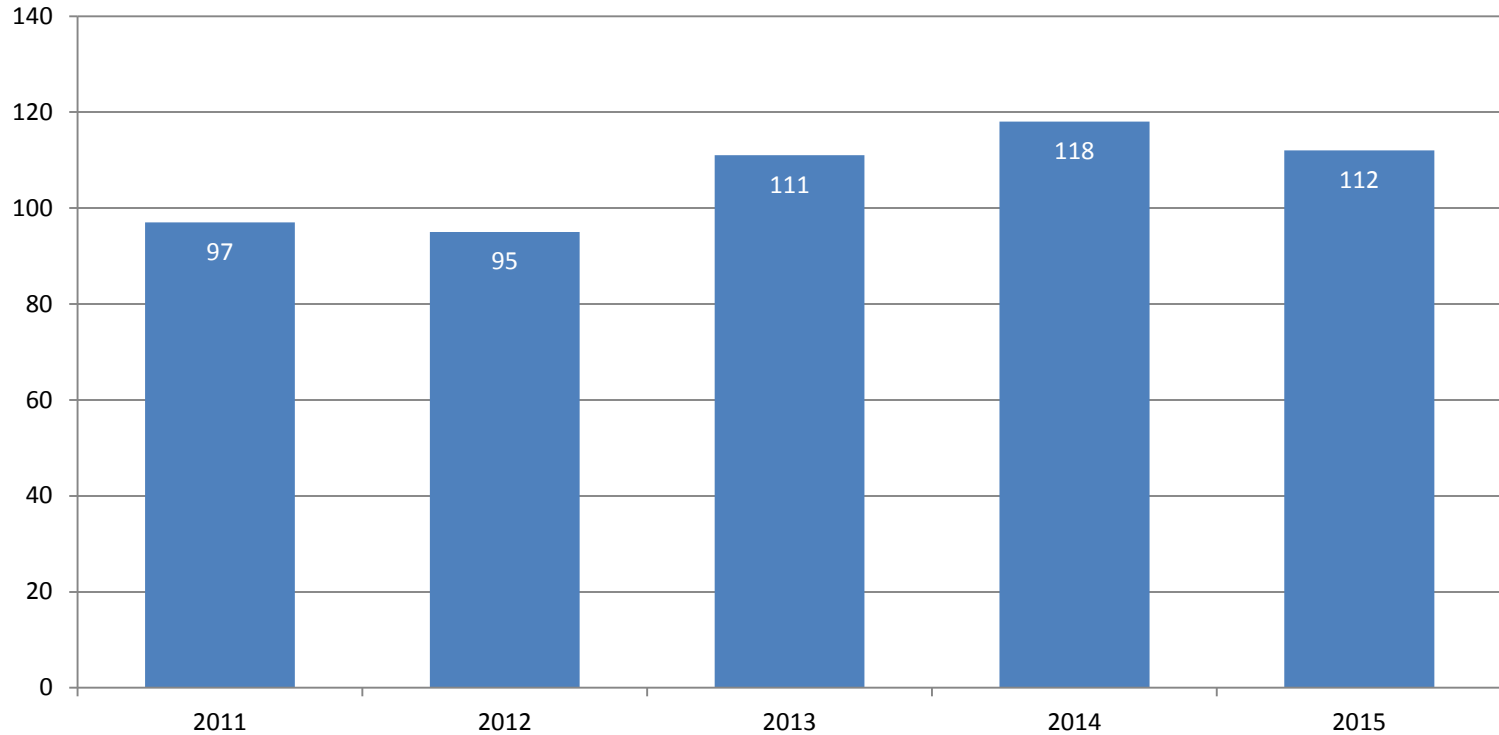


The percent of undergraduate degrees awarded to students from underrepresented groups at the University of Illinois at Springfield is higher than its peer median.

* Includes Black, Hispanic, American Indian, Native Hawaiian/Other Pacific Islander, and multi-racial students.

Note: Only includes bachelor degrees, excludes associate degrees and certificates. Degrees awarded from July 1 to June 30 of each fiscal year.

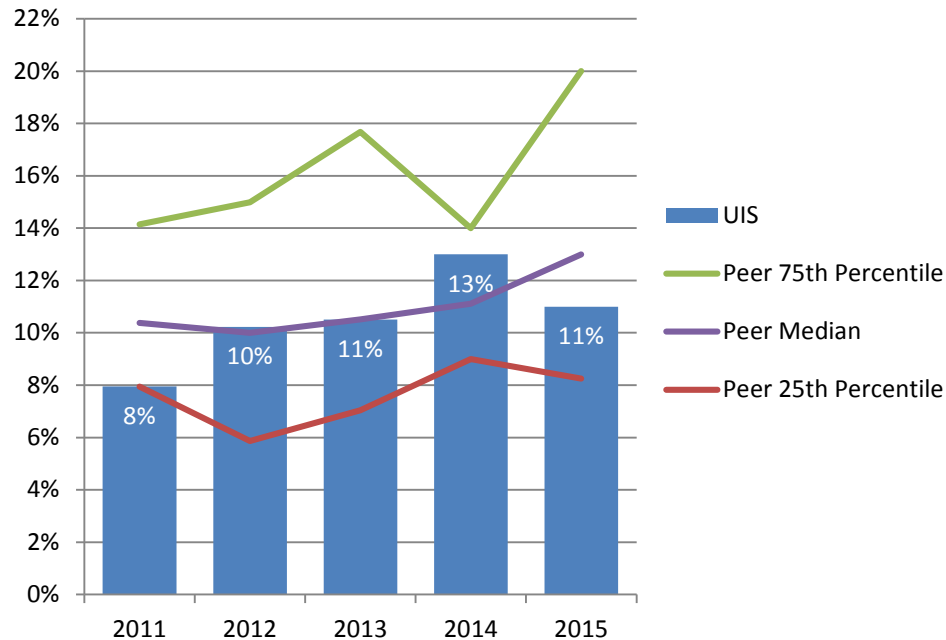
Number of Bachelor Degrees Granted to Students from Underrepresented* Groups FY 2011 – FY 2015



* Includes Black, Hispanic, American Indian, Native Hawaiian/Other Pacific Islander, and multi-racial students.

Note: Only includes bachelor degrees, excludes associate degrees and certificates. Degrees awarded from July 1 to June 30 of each fiscal year.

Percent Graduate and Professional Degrees Granted to Students from Underrepresented* Groups FY 2011 – FY 2015

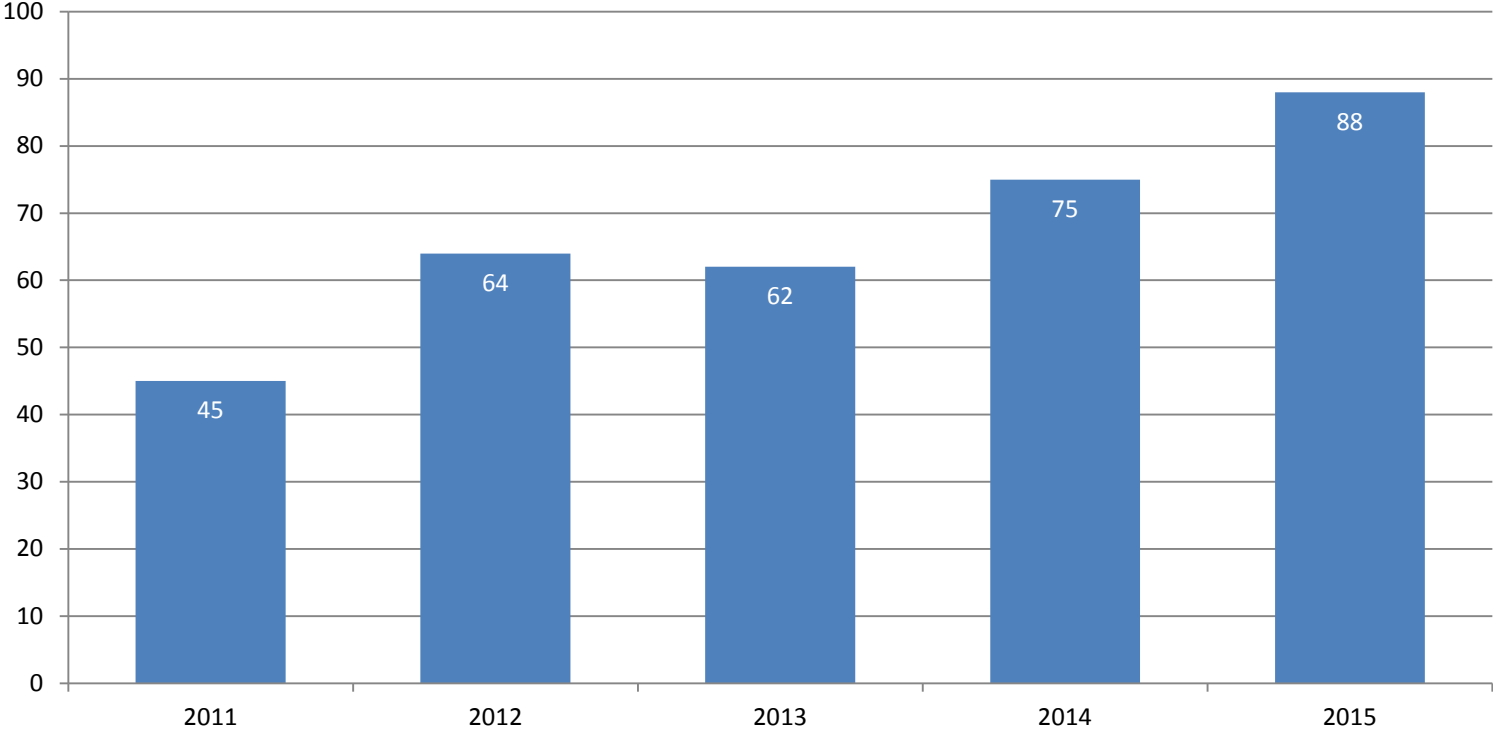


In FY 2015, the percent of graduate degrees awarded to students from underrepresented groups at the University of Illinois at Springfield is lower than its peer median.

* Includes Black, Hispanic, American Indian, Native Hawaiian/Other Pacific Islander, and multi-racial students.

Note: Only includes master, doctoral, and professional degrees; excludes certificates. Degrees awarded from July 1 to June 30 of each fiscal year.

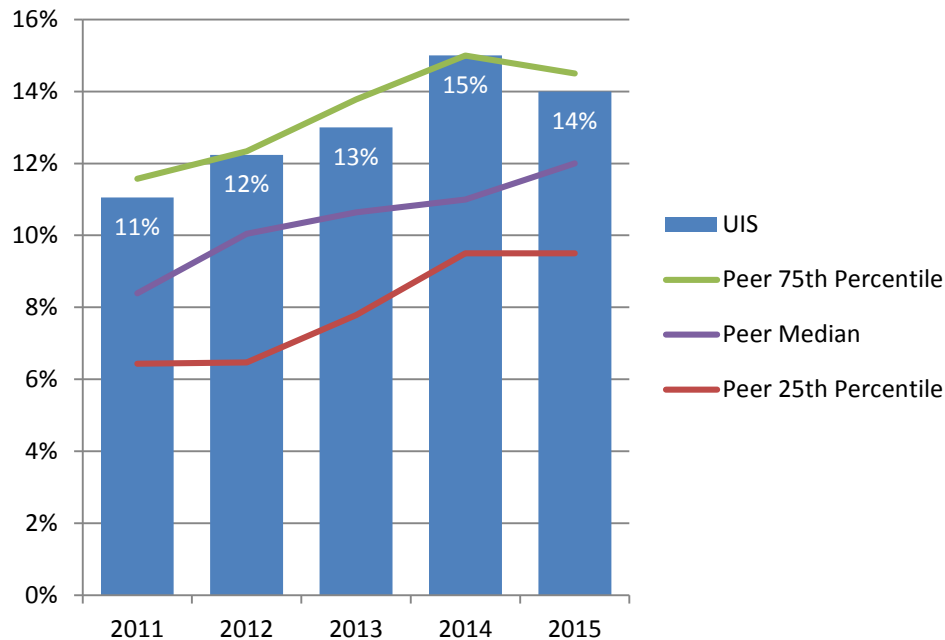
Number of Graduate and Professional Degrees Granted to Students from Underrepresented* Groups FY 2011 – FY 2015



* Includes Black, Hispanic, American Indian, Native Hawaiian/Other Pacific Islander, and multi-racial students.

Note: Only includes master, doctoral, and professional degrees; excludes certificates. Degrees awarded from July 1 to June 30 of each fiscal year.

Percent Total Degrees Granted to Students from Underrepresented* Groups FY 2011 – FY 2015

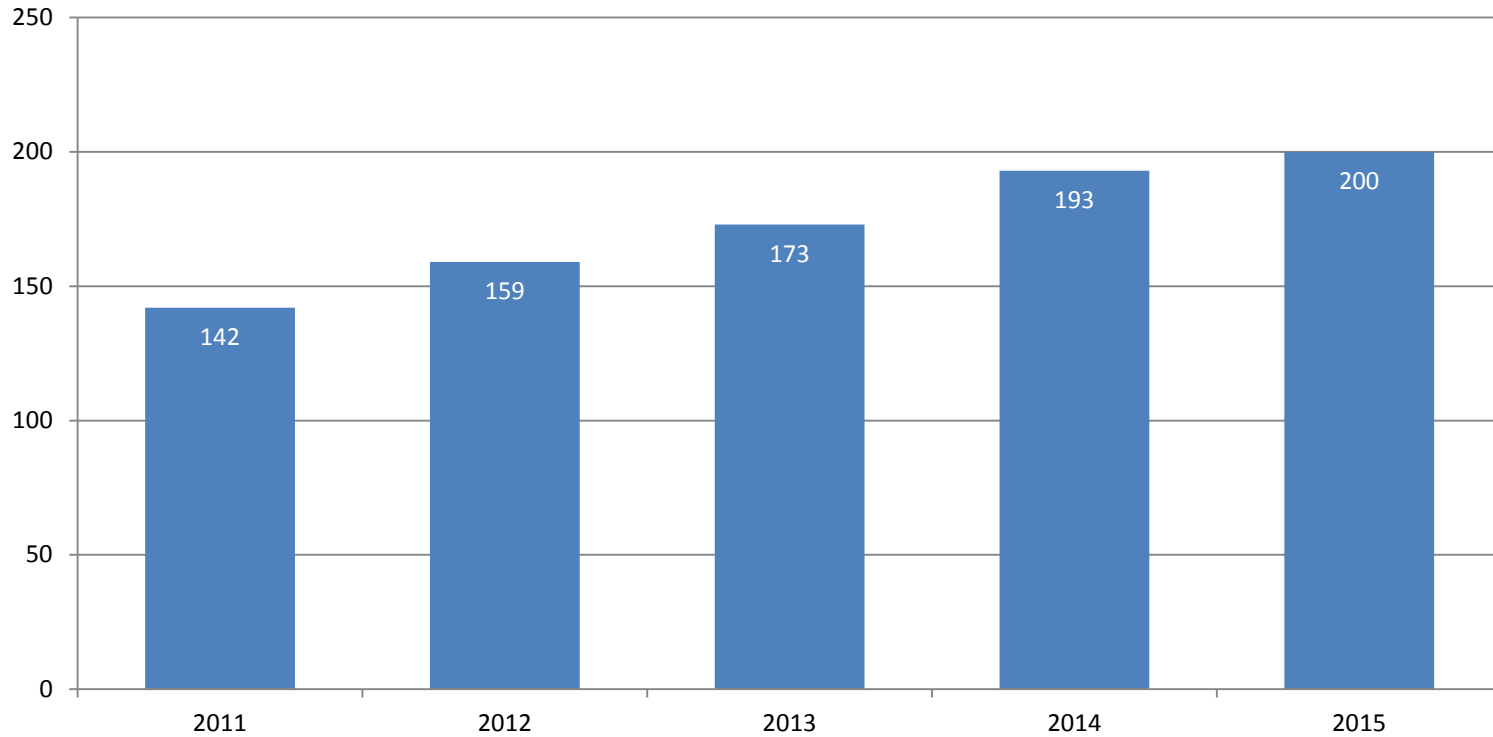


The percent of all degrees awarded to students from underrepresented groups at the University of Illinois is higher than its peer median.

* Includes Black, Hispanic, American Indian, Native Hawaiian/Other Pacific Islander, and multi-racial students.

Note: Only includes bachelor, master, doctoral, and professional degrees; excludes associate degrees and certificates. Degrees awarded from July 1 to June 30 of each fiscal year.

Number of Total Degrees Granted to Students from Underrepresented* Groups FY 2011 – FY 2015



* Includes Black, Hispanic, American Indian, Native Hawaiian/Other Pacific Islander, and multi-racial students.

Note: Only includes bachelor, master, doctoral, and professional degrees; excludes associate degrees and certificates. Degrees awarded from July 1 to June 30 of each fiscal year.

University of Illinois at Springfield

Analysis of Dashboard Indicators

ENROLLMENTS, GRADUATION AND RETENTION RATES,
AND DEGREES AWARDED UPDATES:

PRESENTED BY:
CHANCELLOR SUSAN J. KOCH
NOVEMBER 10, 2016

Areas Meeting or Exceeding Expectations

- Graduate enrollment
- Diversity of student body
- Undergraduate and graduate STEM degrees
- Undergraduate and graduate degrees granted to students from underrepresented groups

Accomplishments

- Percent of bachelor's degrees awarded to students in underrepresented groups is higher than peer median
- Number of bachelor's degrees granted in STEM fields has increased
- Number of graduate and professional degrees well above peer median
- Number of graduate degrees granted in STEM fields is higher than peer median

Areas Needing Improvement

- Enrollment
- Freshman retention rate
- Graduation rates

Strategy to improve **enrollment**

- **Actions:**
 - Increase number of academic programs in high-demand areas
 - Continue to implement innovative online programs
 - Enhance competitive marketing strategies to increase institutional visibility
 - Completion of Student Union

Strategy to improve freshman retention rates

- **Actions:**
 - Focus on recruiting highly qualified freshmen
 - Make retention an institution-wide priority
 - Promote programs offered through new Center for Academic Success
 - Continued programming via residential Living/Learning communities
 - Second-year Residential Initiative has been implemented

Strategy to improve **graduation rates**

- **Actions:**
 - Increase availability of need-based financial aid
 - Make scholarships a top priority of the Office of Advancement
 - Develop and implement Sophomore Experience Program

Areas we are watching

- Size of freshman class
- Tuition and fees compared to other public universities in Illinois
- Student debt
- Retention and graduation rates