

Board Meeting
November 12, 2015

APPOINT VICE CHANCELLOR FOR HEALTH AFFAIRS, CHICAGO

Action: Appoint Vice Chancellor for Health Affairs

Funding: Institutional Funds

The Chancellor, University of Illinois at Chicago, and Vice President, University of Illinois recommends the appointment of Robert A. Barish, presently Professor of Emergency Medicine and Chancellor, Louisiana State University (LSU) Health Sciences Center at Shreveport, as Vice Chancellor for Health Affairs, Chicago, non-tenured, on a twelve-month service basis, on 90 percent time, at an annual salary of \$300,000, and an administrative increment of \$350,000, beginning January 1, 2016.

In addition, Dr. Barish will be appointed to the rank of Visiting Professor of Emergency Medicine, College of Medicine at Chicago, non-tenured, on a twelve-month service basis, on 10 percent time, at an annual salary of \$30,000, beginning January 1, 2016; and Physician Surgeon, non-tenured, on a twelve-month service basis, on zero percent time, non-salaried, beginning January 1, 2016, for a total annual salary of \$680,000.

Dr. Barish will succeed Dr. Jerry L. Bauman, who has served as Interim Vice President for Health Affairs since September 1, 2013. Dr. Bauman will return to service as Professor of Pharmacy Practice and Dean, College of Pharmacy.

At the Board of Trustees meeting in March 2014, the Trustees approved a health-care reorganization plan that aligned the clinical and academic enterprises at the Chicago campus under the Vice Chancellor for Health Affairs to enhance patient care, teaching, and research. The realignment eliminated the Vice President for Health Affairs position and created a Vice Chancellor for Health Affairs reporting to the Chancellor at the Chicago campus, as set forth in the attached organizational structure.

The Board action recommended in this item complies in all material respects with applicable State and federal laws, University of Illinois *Statutes, The General Rules Concerning University Organization and Procedure* and the Board of Trustees policies and directives.

This recommendation was forwarded following a national search and based on the advice of a search committee.¹

The Vice President for Academic Affairs concurs.

The President of the University recommends approval.

(A biosketch follows).

¹ George W. Crabtree, *Co-Chair*, Professor and UIC Distinguished Professor of Physics, College of Liberal Arts and Sciences; Terry Vanden Hoek, *Co-Chair*, Professor, Physician Surgeon and Head, Department of Emergency Medicine, and Physician Surgeon and Chief of Service, College of Medicine at Chicago; Faith Johnson Bonecutter, Clinical Associate Professor and Associate Dean, Jane Addams College of Social Work; Cynthia A. Barnes-Boyd, Senior Director of Community Engagement and Neighborhood Health Partnerships, Mile Square Health Center, and Clinical Associate Professor, Division of Community Health Sciences, School of Public Health; Paul Brandt-Rauf, Professor, Division of Environmental and Occupational Health Sciences, and Dean, School of Public Health; Donald Arthur Chambers, retired Professor of Biochemistry and Molecular Genetics, College of Medicine at Chicago; Fady T. Charbel, Professor and Richard and Gertrude Fruin Professor, Physician Surgeon, and Head, Department of Neurological Surgery, College of Medicine at Chicago, and Chief of Service, University of Illinois Hospital and Health Sciences System; Karen J. Colley, Professor of Biochemistry and Molecular Genetics, College of Medicine at Chicago, and Dean, Graduate College; Carol J. Ferrans, Professor of Biobehavioral Health Science and Associate Dean, College of Nursing; Patricia W. Finn, Professor and Earl M. Bane Professor of Medicine, Physician Surgeon, and Head, Department of Medicine, College of Medicine at Chicago; William E. Fitzsimmons, Alumnus and Divisional Executive Vice President for Global Regulatory Affairs, Global Clinical and Research Quality Assurance, Astellas Pharm Global Development; Heather J. Haberaecker, former Executive Assistant Vice President, Office of the Vice President for Health Affairs; Jodi S. Joyce, Associate Vice President for Quality, Office of the Vice President for Health Affairs; David H. Loffing, Chief Operating Officer, University of Illinois Hospital and Health Sciences System; Peter C. Nelson, Professor of Computer Science, and Dean, College of Engineering; Carol Anne Petersen, Associate Director of Student Development Services, Office of the Vice Chancellor for Student Affairs; Jose R. Sanchez, President and Chief Executive Officer, Norwegian American Hospital; Marieke Dekker Schoen, Clinical Associate Professor of Pharmacy Practice, Visiting Vice Dean, and Associate Dean for Academic Affairs, College of Pharmacy; David Eric Schwartz, Professor of Clinical Anesthesiology, and Head, Department of Anesthesiology, and Physician Surgeon and Co-Associate Dean for Clinical Affairs, College of Medicine at Chicago; Clark Stanford, UIC Distinguished Professor and Dean, College of Dentistry; Yolanda Suarez-Balcazar, Professor and Head, Department of Occupational Therapy, College of Applied Health Sciences; Vidyani Suryadevara, Ph.D. candidate, Department of Bioengineering, College of Engineering, and Treasurer of Graduate Student Council; Patrick Anthony Tranmer, Professor of Clinical Family Medicine and Physician Surgeon, Department of Family Medicine, Co-Associate Dean for Clinical Affairs and Executive Director, MSP, College of Medicine at Chicago, and Medical Director, Managed Care, University of Illinois Hospital and Health Sciences System; Catherine Vincent, Associate Professor of Women, Children, and Family Health Science, College of Nursing, and Secretary of the Senate, Faculty Senate; Astrida Orle Tantillo, Professor of Germanic Studies, Professor of History, and Dean, College of Liberal Arts and Sciences; Henry Taylor, Jr., Executive Director, Mile Square Health Center.

ROBERT A. BARISH

Education

University of New Hampshire, Durham, B.A., 1975

New York Medical College, Valhalla, M.D., 1979

Loyola University Maryland, Baltimore, M.B.A., 1995

Professional and Other Experiences

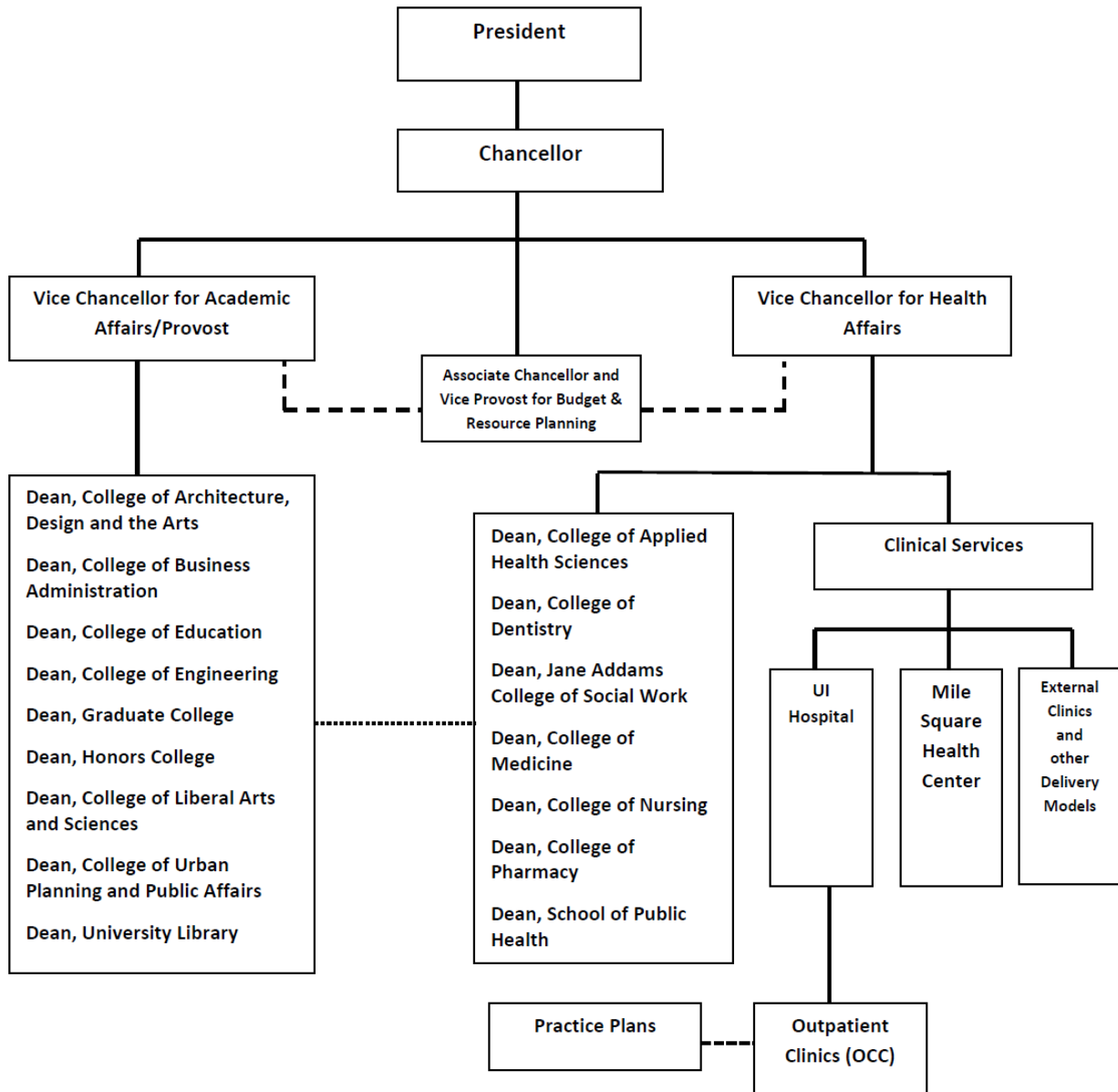
University of Maryland Baltimore School of Medicine, 1985-91, Assistant Professor, Department of Surgery and Department of Medicine; 1991-95, Associate Professor, Department of Surgery and Department of Medicine; 1995-2006, Professor, Department of Surgery and Department of Medicine; 1998-2004, Associate Dean for Clinical Affairs; 2004-05, Senior Associate Dean for Clinical Affairs; 2005-09, Vice Dean for Clinical Affairs; 2006-09, Professor, Department of Emergency Medicine and Department of Medicine

University of Maryland Baltimore Medical Center, 1985-88, Chief, Section of Emergency Medicine; 1985-96, Director, Emergency Medical Services; 1988-96, Chief, Division of Emergency Medicine; 1990-96, Chief, Division of Emergency Medicine, Mercy Medical Center; 1993-96, Co-Director, Chest Pain Evaluation Center; 1993-96, Director, Critical Care Transport; 1996-98, Chief Executive Officer, UniversityCARE

Uniformed Services University of the Health Sciences, Bethesda, Maryland, 1992, Clinical Assistant Professor of Military Medicine, Department of Military Medicine
University of Maryland Baltimore, 1993, Affiliate Associate Professor, Department of Emergency Health Services

Louisiana State University Health Sciences Center at Shreveport, 2009-date, Professor, Department of Emergency Medicine; 2009, Chancellor and Interim Dean; 2009-date, Chancellor; 2010-date, Institutional Official

ACADEMIC HEALTH CENTER
ORGANIZATIONAL STRUCTURE



The dotted line between the Vice Chancellor for Academic Affairs/Provost and the Vice Chancellor for Health Affairs (VCHA) is shown to denote a close collaborative relationship in leading the entire academic mission of UIC, rather than a dotted "reporting" line.

The dotted lines between the faculty practice plans and the UI Clinics are shown to denote a shared governance model for the clinical practices, the faculty, and the

ambulatory health care facilities within the VCHA's portfolio. In this model, the dean of each college serves as the CEO of their respective practice plan and clinical services; consistent with this, clinical department heads report solely to the dean for these activities.