

University of Illinois at Chicago

Dashboard Indicators

**ENROLLMENT, GRADUATION AND RETENTION RATES,
DEGREES AWARDED, AND GRADUATE EDUCATION UPDATES BY:**

University Office for Planning and Budgeting

OCTOBER 12, 2015

PRESENTED BY:

CHANCELLOR MICHAEL D. AMIRIDIS

NOVEMBER 12, 2015

Reported to the Board of Trustees
November 12, 2015

Peer Groups



University of Illinois at Chicago

SUNY, University at Buffalo

University of Alabama at Birmingham

University of Cincinnati

University of Connecticut

University of Louisville

University of South Florida - Tampa

University of Utah

Virginia Commonwealth University

Aspiration Groups



University of Illinois at Chicago

Rutgers University

University of Arizona

University of California – Los Angeles

University of California – Irvine

University of Washington

Enrollment



Accomplishments/Areas Exceeding Expectations



- Fall 2015 census of 29,048 students was UIC's highest 10th day enrollment
 - Undergraduate enrollment increased by 4.8% (16,707 to 17,511)
 - New Freshman increased by 15% (3,030 to 3,485)
- UIC ranked #80 of all public institutions and #129 of both private & public schools (*US News & World Report-Best College Rankings*)
 - Tied with Arizona State University, Louisiana State University, University at Albany (SUNY) and University of Arkansas
- First cohort in the President's Award Program STEM Scholarship award completed the UIC Summer Research Experience

Accomplishments/Areas Exceeding Expectations



- Increased participation in recruitment and outreach events
 - Increase of 250 events
 - 30% more events than 2014 and 100% more events than in 2013
 - Hosted prospective and admitted students and families at:
 - Open House
 - Firestarter
 - LARES Family Day
 - Virtual College Fairs
 - Admitted Student Welcome
 - AARERI Faculty Brunch
 - IGNITE: Admitted Student Day
- Launched strategic outreach and communication initiatives
 - UIC Transfer Assistance Center
 - UIC International Recruitment Unit
 - Admissions Marketing Unit with media center
- Hosted 22,000 visitors at the UIC Visitor Center for daily information sessions and campus tours

Accomplishments/Areas Exceeding Expectations



- Improved marketing and communication efforts
 - Updated publications and recruitment materials with new UIC brand
 - Customized prospective student view book to be audience specific
 - Transmitted +1.3 million communications through Banner Relationship Management, fielded 120,000 Admissions telephone inquiries, and provided over 1,000 tele-counseling sessions
- Reinforced strategic admission policies to smooth student transitions
 - Implementing Transfer Admission Guarantee (TAG) Agreements with various Illinois Community Colleges
 - Announced Chicago Star Scholar Program partnership with Mayor Emanuel and the City Colleges of Chicago
 - Increased number of students admitted through Early Action by 27% (4,230 in Fall 2014 to 5,360 in Fall 2015)

Strategies for Improvement



- Complete strategic enrollment management plan to identify capacity and resource requirements
- Evaluate and revise tuition structure: create tiered non-resident rates and international tuition rate; implement a reduced, per credit hour summer tuition rate for Summer 2016
- Execute international recruitment contract to increase undergraduate student population
- Implement ACCESS program (augmented admission review) for 1st year applicants
- Expand TAG admissions pathways to students from surrounding area and statewide community colleges
- Continue membership in "I'm First" college search engine for first generation college students

Graduation and Retention Rates



Accomplishments/Areas Exceeding Expectations



- Increased first year retention between Fall 2014 and Fall 2015
 - Overall student retention up 1.8% to 81.5%
 - African American student retention increased by 6.9% to 81.7%
 - Hispanic student retention increased by 2.2% to 77.5%
- 6 year graduation rate (2009) held steady at 60%, a similar rate to peers
- Upgraded student success systems and processes
 - Improved faculty participation in use of early alert system, a 300% increase in academic warnings (1,366)
 - Targeted 34 courses in 8 subjects for early alert system participation
 - Participation in Upgraded Banner Student System to support Block Scheduling for UIC Student Success Initiative
 - Enhanced the Undergraduate Advising Resource Center

Strategies for Improvement



- Provide more opportunities for undergraduate research and other high impact practices
- Implement first-year Student Success Initiatives
 - Operate *Teaching and Learning Center* to assist faculty in adopting new and improved pedagogical techniques to engage student learning
 - Implement transition coaching programs with high schools
 - Increase number of courses in the academic warning system
 - Improve participation of CPS graduates in the Summer College Bridge program
 - Increase percent of first-year students completing 15 credit hours
 - Improve and measure quality of student advising through training and implementation of baseline metrics

Degrees Awarded



Accomplishments/Areas Exceeding Expectations



- 5 year graduation rate for new transfers entering Fall 2010 is 74.8%
 - Asian, 74.9%
 - African American, 61.4%
 - Hispanic, 72.0 %
 - Caucasian, 77.2%
- Awards more degrees in the following areas than peers
 - 21.6% more graduate and professional degrees
 - 50.7% more health related professional degrees
 - 25.5% more total health related degrees
 - 13.0% more degrees to underrepresented groups

Graduate Education



Accomplishments/Areas Exceeding Expectations



- Graduate programs maintained high national rankings
 - #9 City Management and Urban Policy
 - #13 Nursing; #9 among public institutions
 - #16 Physical Therapy; #7 among public institutions
 - #17 Public Health; #9 among public institutions
 - #19 Criminology
 - #24 Social Work; #14 among public institutions
- Professional programs maintained high rankings
 - #4 Occupational Therapy; #1 among public institutions
 - #13 Dentistry; #9 among public institutions (*Source: Quality Stars*)
 - #14 Pharmacy
 - #16 Physical Therapy
 - #49 Best Medical Schools - Research; #24 among publics

(Source: US News and World Report unless otherwise noted)

Accomplishments/Areas Exceeding Expectations



- Offered professional development for graduate students
 - Conducted over 50 academic and writing skills workshops/events
 - Emphasized topics such as life skills, wellness, and career and professional development
 - Provided courses in college level teaching and responsible conduct of research
- Provided fellowship and research funding opportunities focused on interdisciplinary research, external proposal development, and degree completion in all disciplines

Accomplishments/Areas Exceeding Expectations



- Awarded a higher percent of doctoral degrees to African American students (11%) compared to very high research universities (4.9%) and all universities (6.4%)
- Awarded more baccalaureates, graduate and professional degrees combined to Latinos than at any four year university in Illinois.
- College of Medicine has the largest total Latino enrollment in the nation.
- Decreased average time to degree for PhD students from 8.7 years in 2012 to 8.0 years (*Source: Survey of Earned Doctorates 2013*)

Strategies for Improvement



- Engage students and track their progress
 - Establish and enforce time limits to complete preliminary qualifying exams and advancement to PhD candidacy Continue to mandate that programs track students and provide annual progress reports
- Reduce financial stop-outs
 - Increase fellowship funding through development and philanthropic giving
 - Improve access and assistance to identifying and applying for external funding awards
- Implement diversity initiatives to retain and graduate underrepresented students
 - Provide targeted fellowships, undergraduate-to-graduate research-transition programs, and mentoring programs

Strategies for Improvement



- Directly address student job preparation and placement upon degree completion, particularly for non-STEM students
 - Continue to develop and offer professional development workshops
 - Incentivize workshop participation by connecting attendance to fellowship funding
 - Encourage students to find summer internships
 - Improve career services for graduate students

Enrollments



University of Illinois at Chicago and Peer Institutions

Fall Term Enrollment, Fall 2009 – Fall 2015

Institution	All Student Total						Undergraduate						Graduate and Professional					
	2009	2010	2011	2012	2013	2014	2009	2010	2011	2012	2013	2014	2009	2010	2011	2012	2013	2014
University of Illinois at Chicago	26,840	27,850	28,091	27,875	28,038	27,969	16,044	16,806	16,925	16,678	16,671	16,718	10,796	11,044	11,166	11,197	11,367	11,251
SUNY, University at Buffalo	28,881	29,117	28,849	28,952	29,850		19,368	19,397	19,334	19,514	19,831		9,513	9,720	9,515	9,438	10,019	
University of Alabama at Birmingham	16,874	17,543	17,575	17,999	18,568		10,646	11,028	11,128	11,291	11,502		6,228	6,515	6,447	6,708	7,066	
University of Cincinnati	31,134	32,283	33,329	33,347	34,379		21,884	22,449	22,893	23,096	23,706		9,250	9,834	10,436	10,251	10,673	
University of Connecticut	25,029	25,498	25,868	25,483	25,911		17,008	17,345	17,815	17,528	18,032		8,021	8,153	8,053	7,955	7,879	
University of Louisville	21,016	21,234	21,152	21,239	21,444		15,477	15,644	15,596	15,724	15,954		5,539	5,590	5,556	5,515	5,490	
University of South Florida - Tampa	40,022	40,431	39,596	41,116	41,428		30,536	30,914	29,975	31,125	31,100		9,486	9,517	9,621	9,991	10,328	
University of Utah	29,284	30,819	31,660	32,388	32,077		22,149	23,371	24,297	24,840	24,492		7,135	7,448	7,363	7,548	7,585	
Virginia Commonwealth University	32,172	32,027	31,627	31,445	30,974		22,886	23,217	23,498	23,661	23,356		9,286	8,810	8,129	7,784	7,618	

UIC Fall 2015 Total Enrollments

All Student Total: 29,048

Undergraduate: 17,575

Graduate and Professional: 11,473

Data Source: IPEDS Data Center. Includes on- and off-campus enrollments.

University of Illinois at Chicago and Peer Institutions

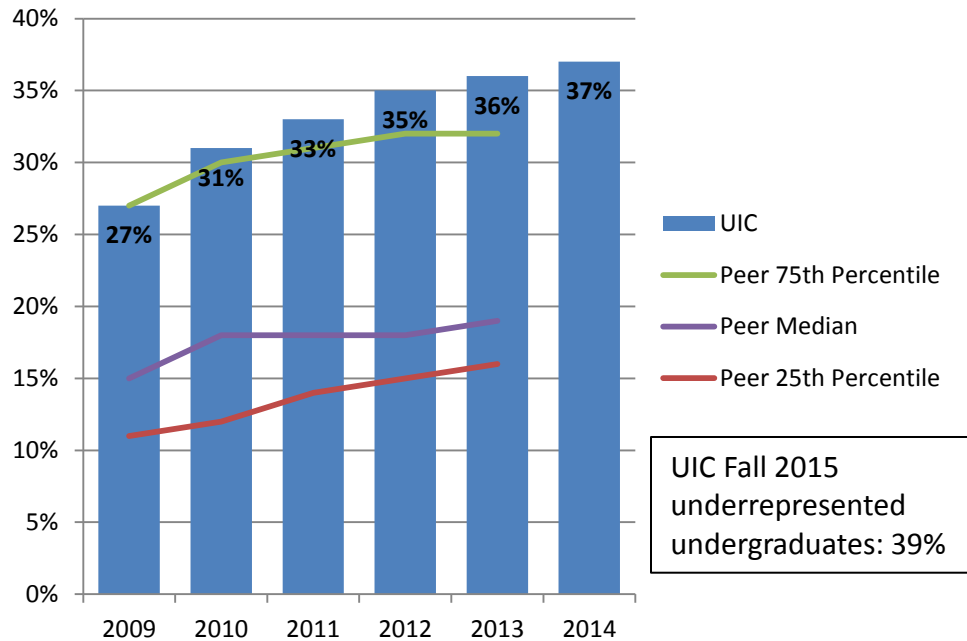
First-Time Freshmen Enrollment, Fall 2009 – Fall 2015

	2009	2010	2011	2012	2013	2014
University of Illinois at Chicago	3,147	3,204	3,115	3,123	3,104	3,030
SUNY, University at Buffalo	3,428	3,393	3,255	3,647	3,653	
University of Alabama at Birmingham	1,517	1,571	1,606	1,676	1,773	
University of Cincinnati	4,301	3,936	4,300	4,160	4,486	
University of Connecticut	3,221	3,339	3,327	3,114	3,755	
University of Louisville	2,478	2,562	2,569	2,705	2,855	
University of South Florida - Tampa	3,767	4,430	3,378	3,750	3,736	
University of Utah	2,867	3,110	3,268	3,494	3,124	
Virginia Commonwealth University	3,610	3,555	3,742	3,554	3,526	

UIC Fall 2015 first-time freshmen: 3,485

Data Source: IPEDS Data Center. Includes on- and off-campus enrollments.

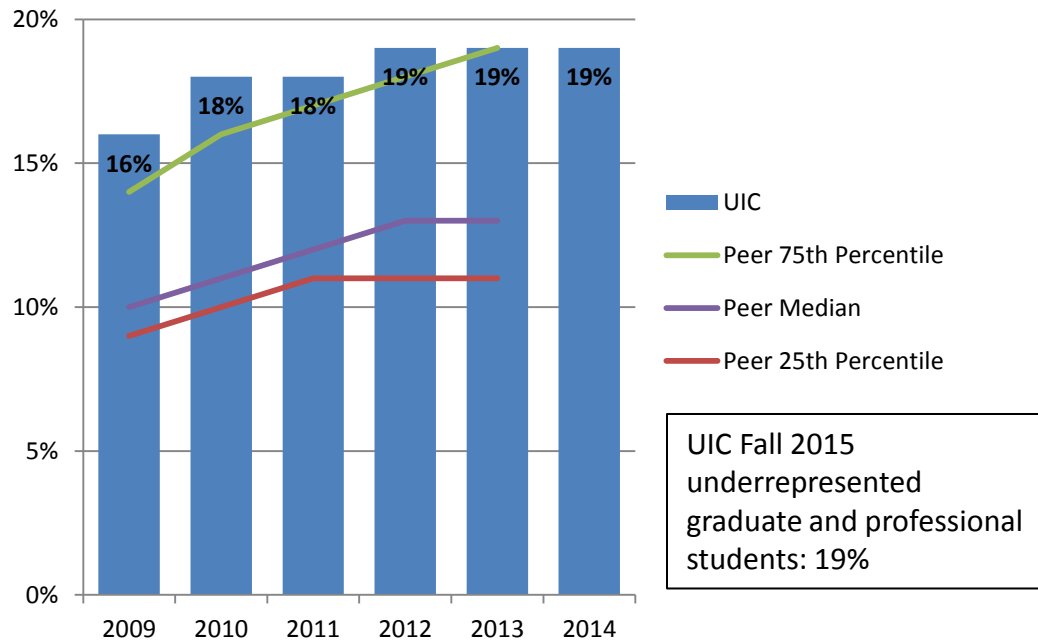
Percent Enrolled Undergraduate Students from Underrepresented* Groups, Fall 2009 – Fall 2015



The percent of undergraduate students from underrepresented groups at the University of Illinois at Chicago is higher than the peer median.

* Includes Black, Hispanic, American Indian, Native Hawaiian/Other Pacific Islander, and multi-racial students.

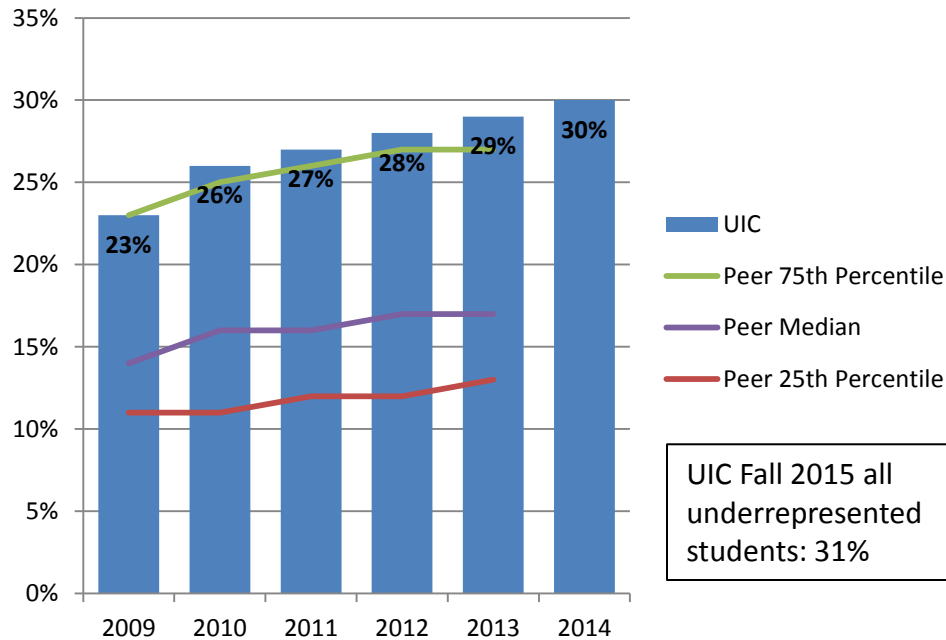
Percent Enrolled Graduate and Professional Students from Underrepresented* Groups, Fall 2009 – Fall 2015



The percent of graduate and professional students from underrepresented groups at the University of Illinois at Chicago is higher than the peer median.

* Includes Black, Hispanic, American Indian, Native Hawaiian/Other Pacific Islander, and multi-racial students.

Percent All Enrolled Students from Underrepresented* Groups Fall 2009 – Fall 2015



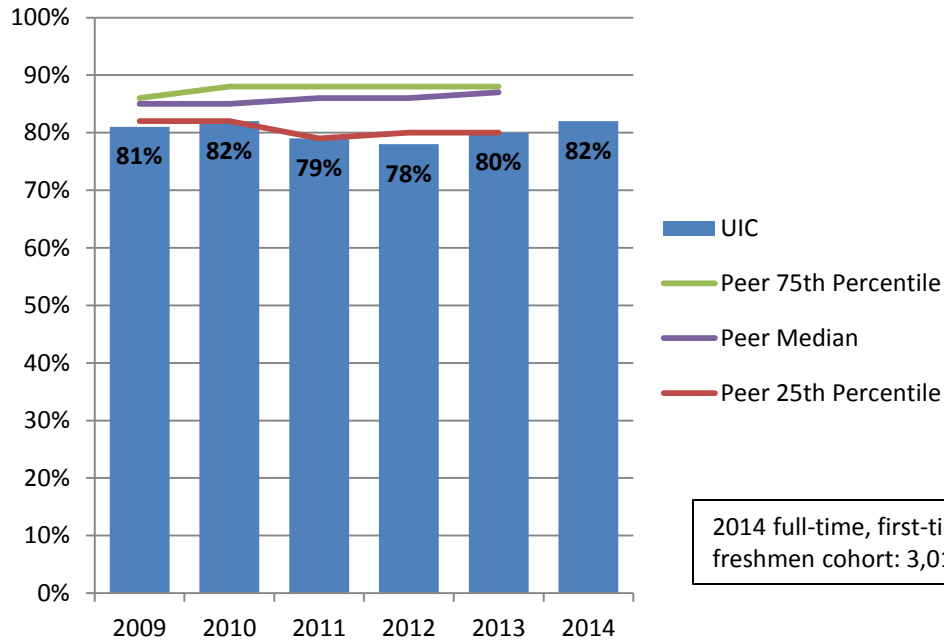
The percent of total students from underrepresented groups at the University of Illinois at Chicago is higher than the peer median.

* Includes Black, Hispanic, American Indian, Native Hawaiian/Other Pacific Islander, and multi-racial students.

Graduation and Retention Rates

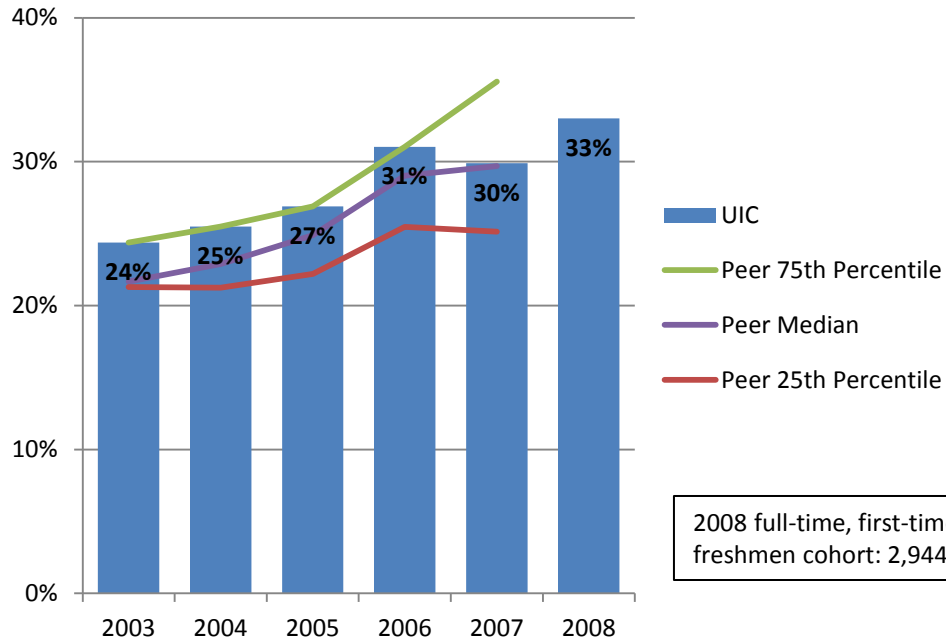


Freshman to Sophomore One-Year Retention Rates 2009 – 2014 Cohorts



The freshman retention rate at the University of Illinois at Chicago is lower than the peer median.

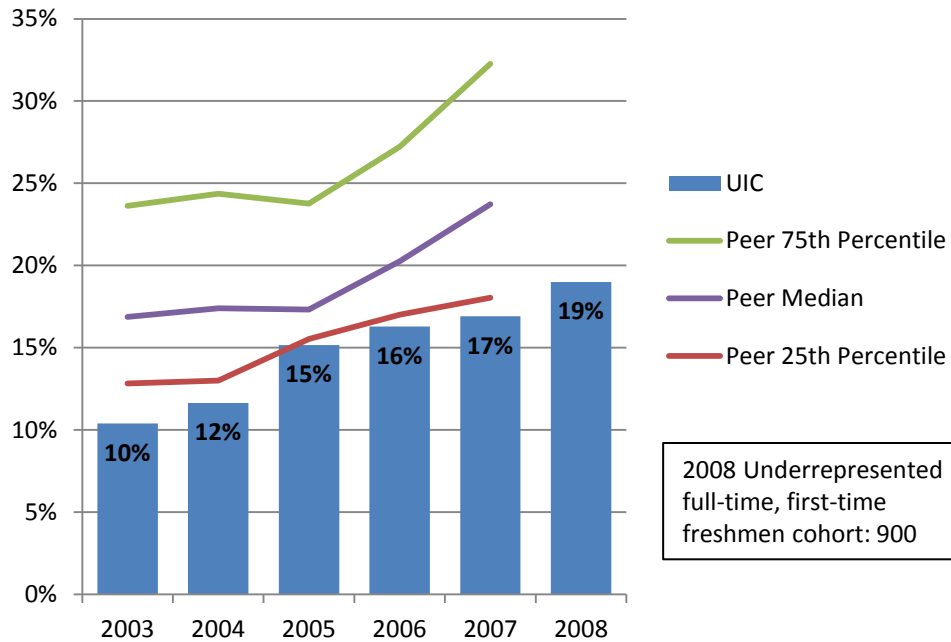
First-Time Freshmen Four-Year Graduation Rates 2003 – 2008 Cohorts



2008 full-time, first-time
freshmen cohort: 2,944

The four year graduation rate of undergraduate students at the University of Illinois at Chicago is higher than the peer median.

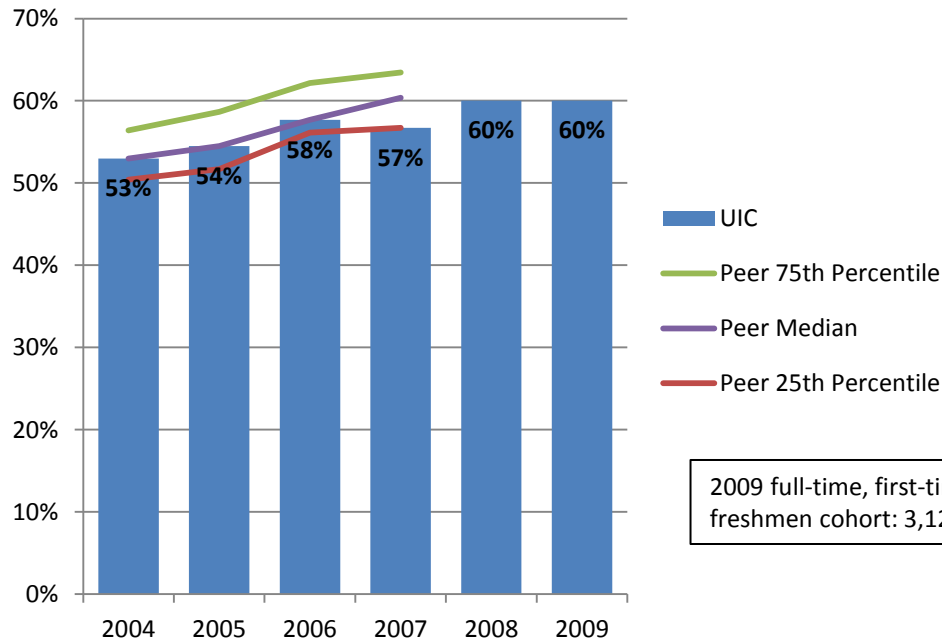
Percent First-Time Freshmen from Underrepresented* Groups Four-Year Graduation Rates, 2003 – 2008 Cohorts



Compared to its peer median, the University of Illinois at Chicago graduates a lower percent of students from underrepresented groups within four years.

* Includes Black, Hispanic, American Indian, Native Hawaiian/Other Pacific Islander, and multi-racial students.

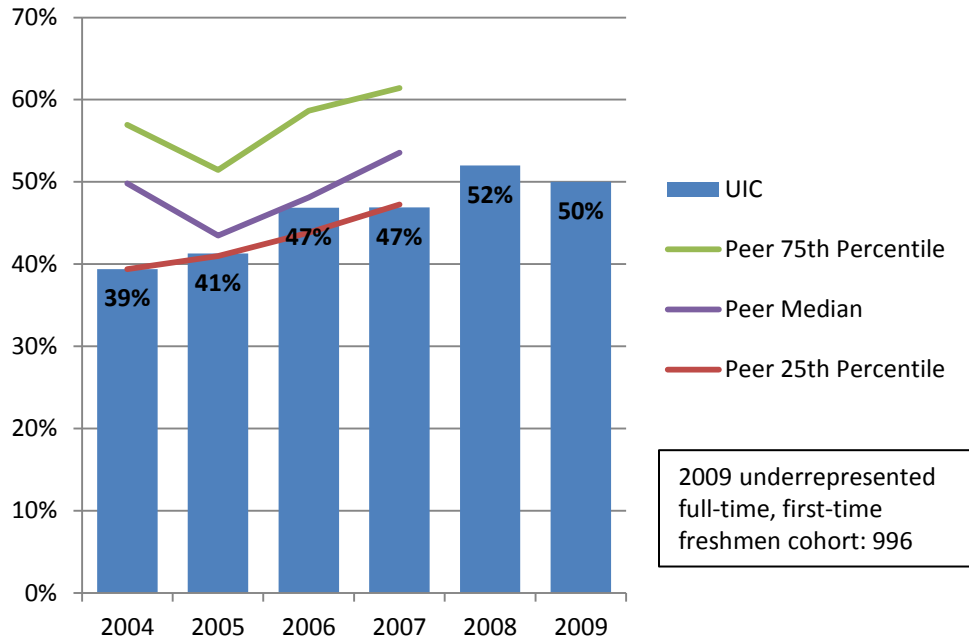
First-Time Freshmen Six-Year Graduation Rates 2004 – 2009 Cohorts



2009 full-time, first-time
freshmen cohort: 3,126

The six year graduation rate of undergraduate students at the University of Illinois at Chicago is on par with the peer median.

Percent First-Time Freshmen from Underrepresented* Groups Six-Year Graduation Rates, 2004 – 2009 Cohorts



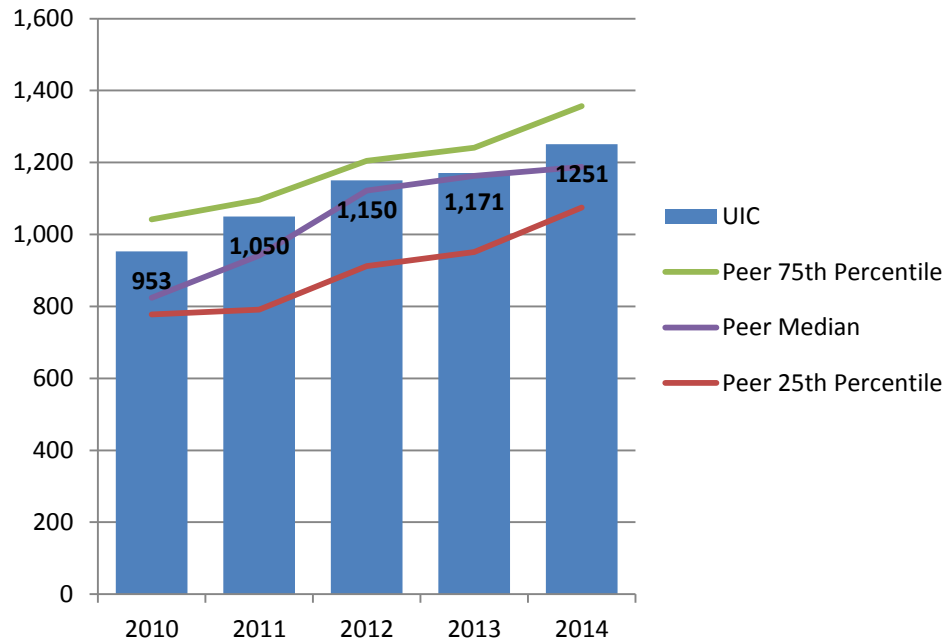
Compared to its peer median, the University of Illinois at Chicago graduates a lower percent of students from underrepresented groups within six years.

* Includes Black, Hispanic, American Indian, Native Hawaiian/Other Pacific Islander, and multi-racial students.

Degrees Awarded



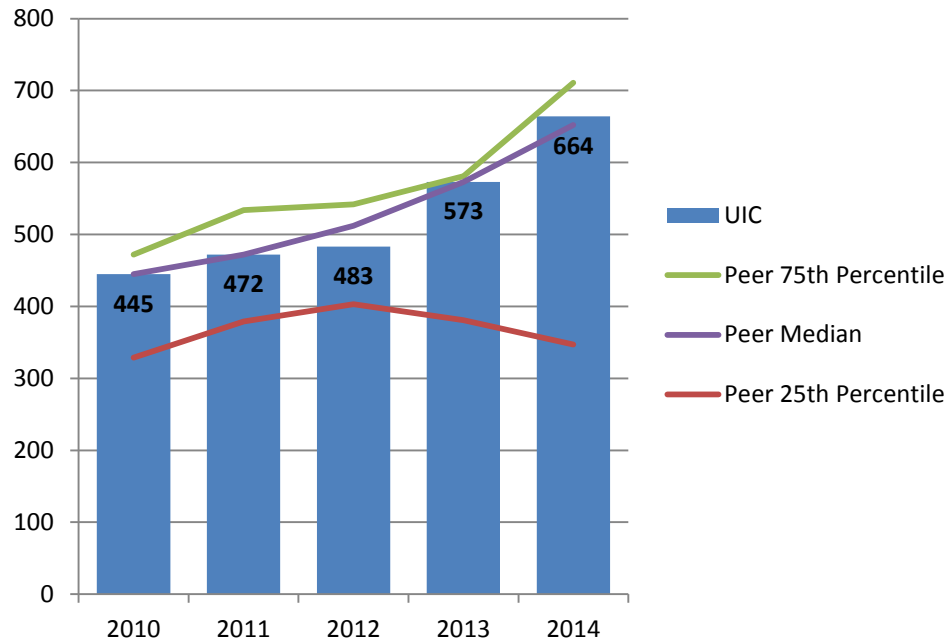
Number of Degrees Granted in STEM* Fields - Bachelor's FY 2010 – FY 2014



University of Illinois at Chicago grants more undergraduate degrees in STEM fields than its peer median.

* Science, Technology, Engineering, and Mathematics.

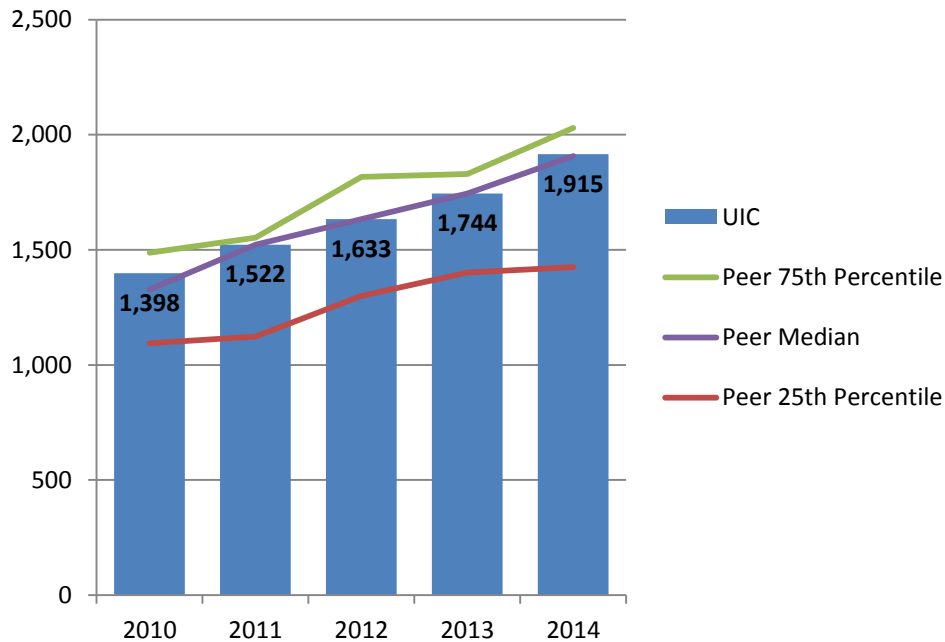
Number of Degrees Granted in STEM* Fields - Master's and Doctorate FY 2010 – FY 2014



In FY 2014, University of Illinois at Chicago grants more graduate degrees in STEM fields than its peer median.

* Science, Technology, Engineering, and Mathematics.

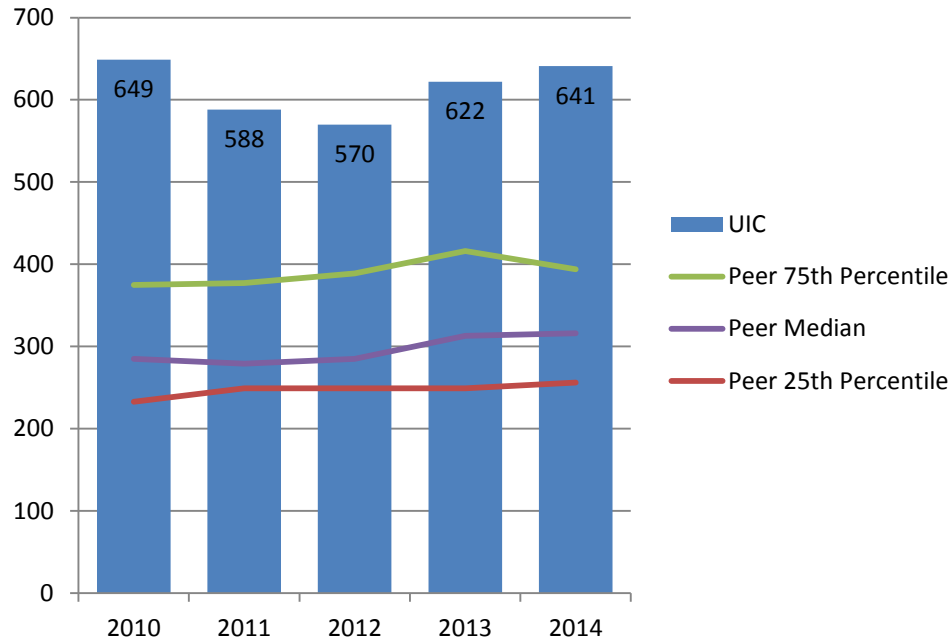
Number of Degrees Granted in STEM* Fields - Total Degrees FY 2010 – FY 2014



The total number of degrees in STEM fields at the University of Illinois at Chicago is similar to the peer median.

* Science, Technology, Engineering, and Mathematics.

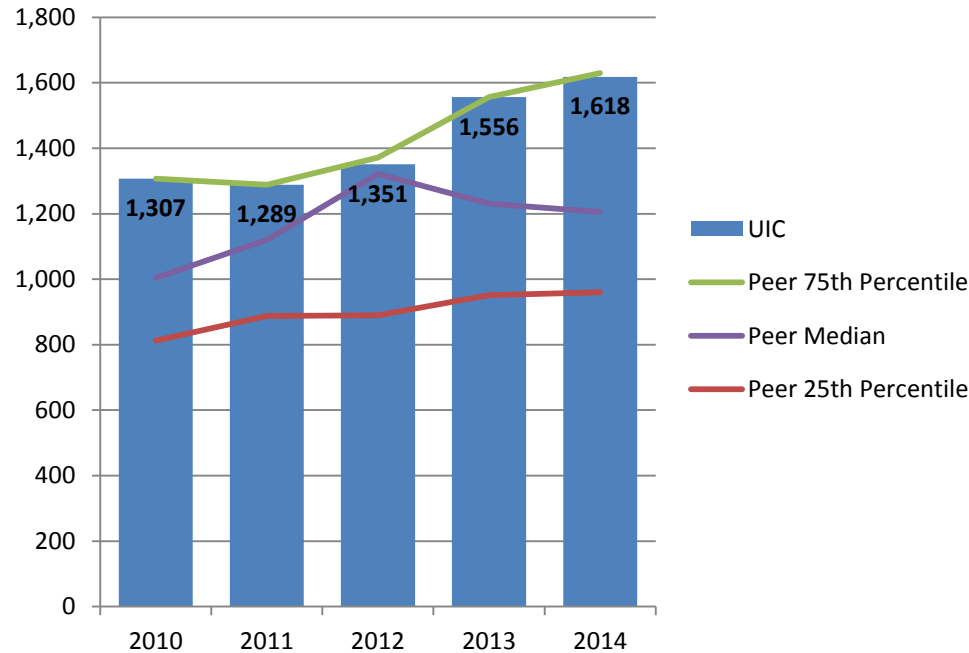
Number of Health-Related Degrees Granted - First-Professional Degree FY 2010 – FY 2014



University of Illinois at Chicago grants more first-professional degrees in health-related fields than its peer median.

Note: Includes all degrees reported under CIP code 51.

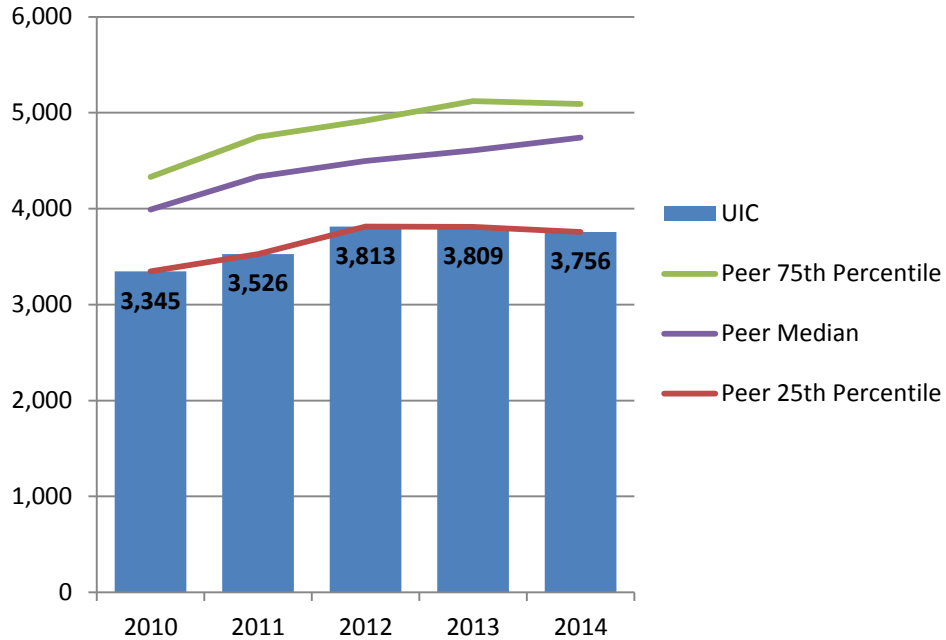
Number of Health-Related Degrees Granted – Total Degrees FY 2010 – FY 2014



University of Illinois at Chicago grants more health-related degrees than its peer median.

Note: Includes all degrees reported under CIP code 51.

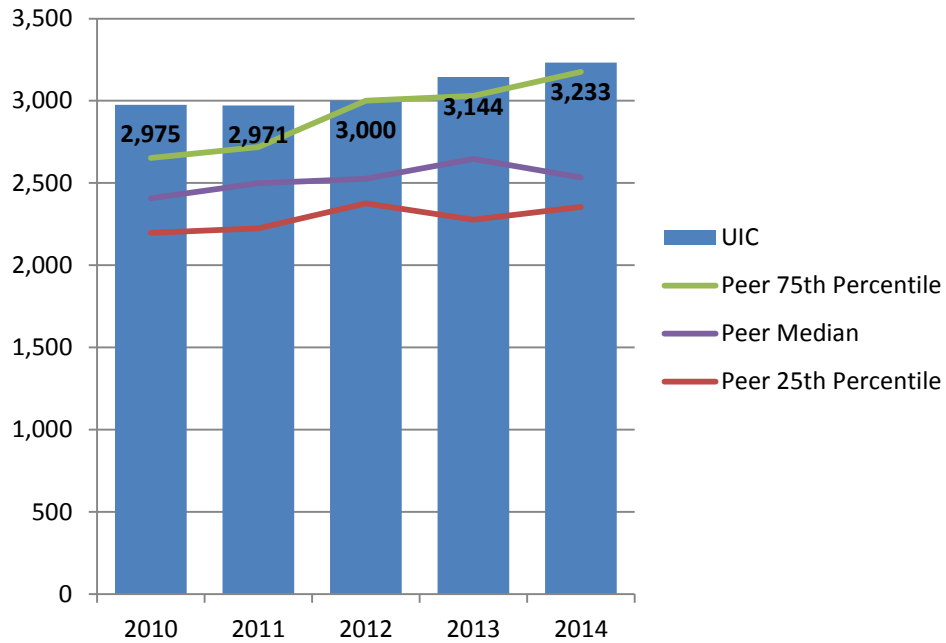
Number of Degrees Granted – Bachelor's FY 2010 – FY 2014



University of Illinois at Chicago grants fewer undergraduate degrees than its peer median.

Note: Only includes bachelor's degrees, excludes associate degrees and certificates. Degrees awarded from July 1 to June 30 of each fiscal year.

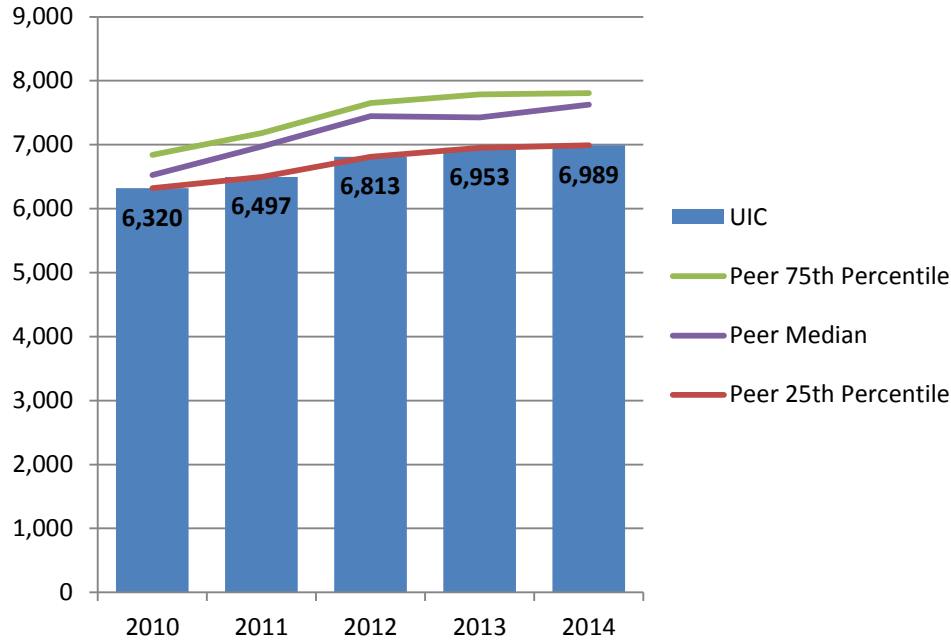
Number of Degrees Granted – Graduate and Professional FY 2010 – FY 2014



University of Illinois at Chicago grants more graduate and professional degrees than its peer median.

Note: Only includes master's and doctoral degrees, excludes certificates. Degrees awarded from July 1 to June 30 of each fiscal year.

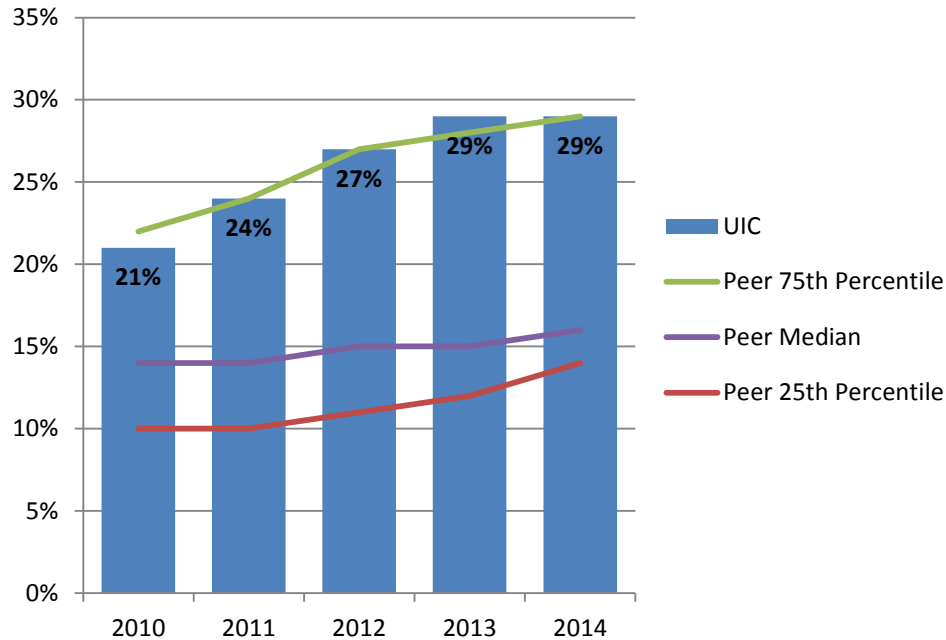
Number of Degrees Granted – Total Degrees FY 2010 – FY 2014



The number of degrees granted by the University of Illinois at Chicago is lower than the peer median.

Note: Only includes bachelor's, master's and doctoral degrees; excludes associate degrees and certificates. Degrees awarded from July 1 to June 30 of each fiscal year.

Percent Bachelor's Degrees Granted to Students from Underrepresented* Groups, FY 2010 – FY 2014

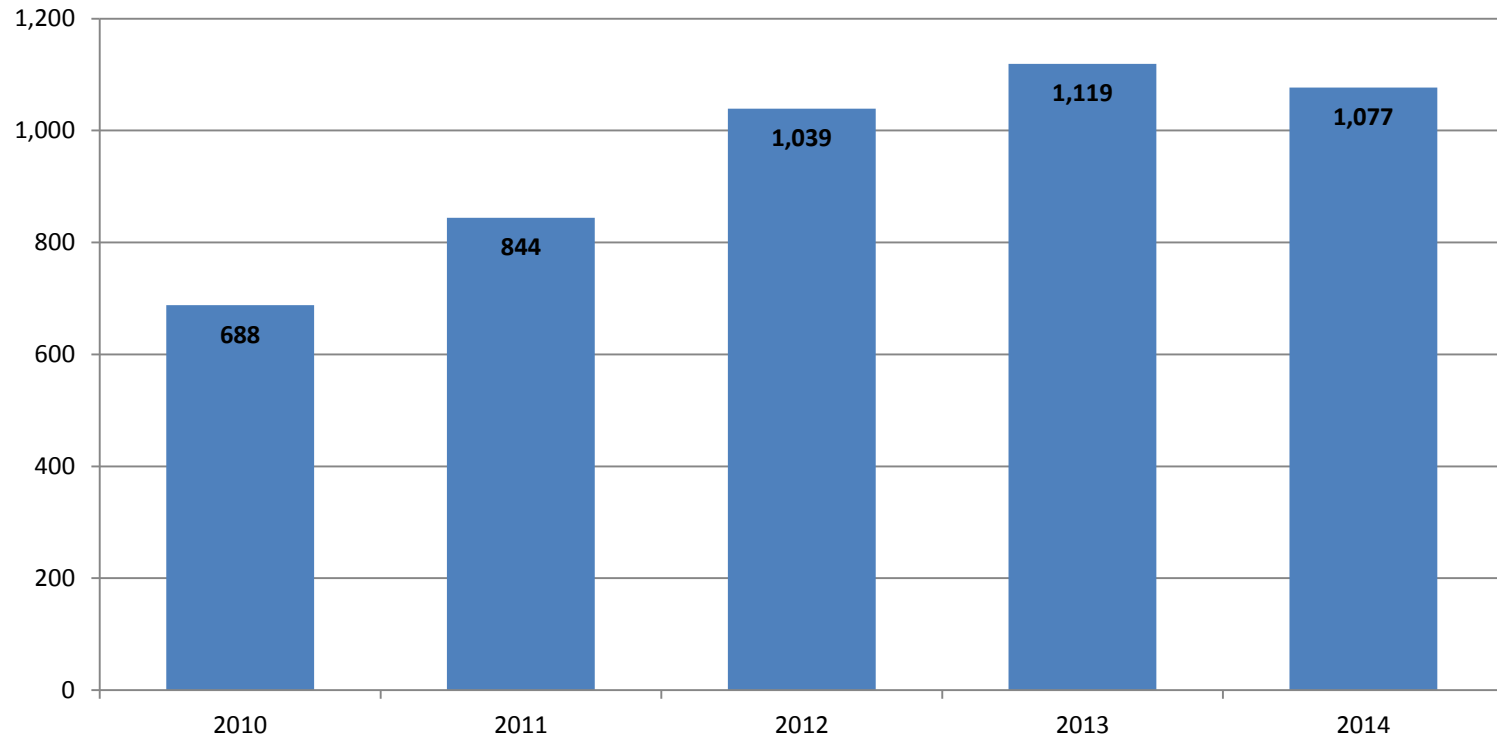


The percent of undergraduate degrees awarded to students from underrepresented groups at the University of Illinois at Chicago is higher than the peer median.

* Includes Black, Hispanic, American Indian, Native Hawaiian/Other Pacific Islander, and multi-racial students.

Note: Only includes bachelor's degrees, excludes associate degrees and certificates. Degrees awarded from July 1 to June 30 of each fiscal year.

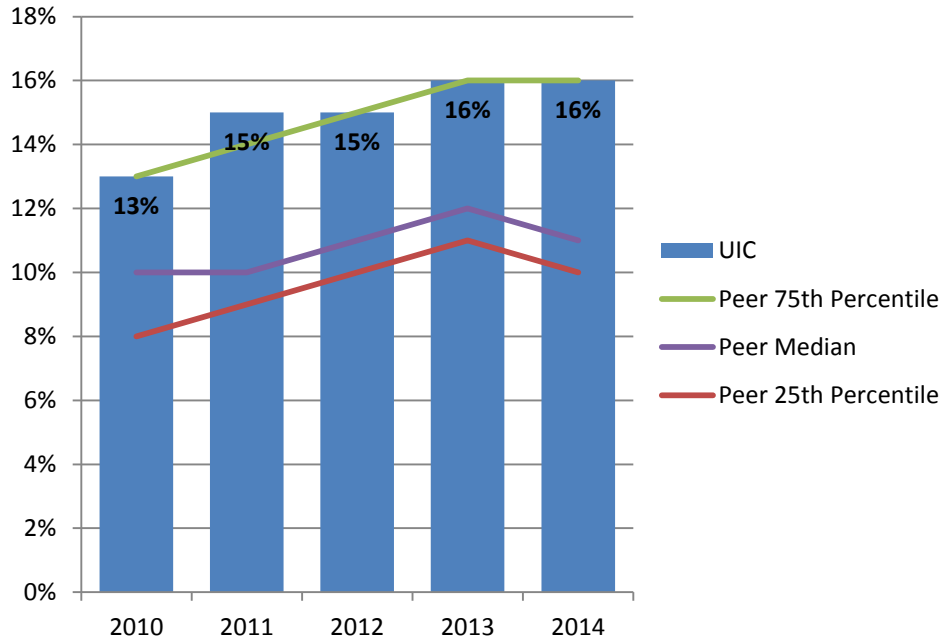
Number of Bachelor's Degrees Granted to Students from Underrepresented* Groups, FY 2010 – FY 2014



* Includes Black, Hispanic, American Indian, Native Hawaiian/Other Pacific Islander, and multi-racial students.

Note: Only includes bachelor's degrees, excludes associate degrees and certificates. Degrees awarded from July 1 to June 30 of each fiscal year.

Percent Graduate and Professional Degrees Granted to Students from Underrepresented* Groups, FY 2010 – FY 2014

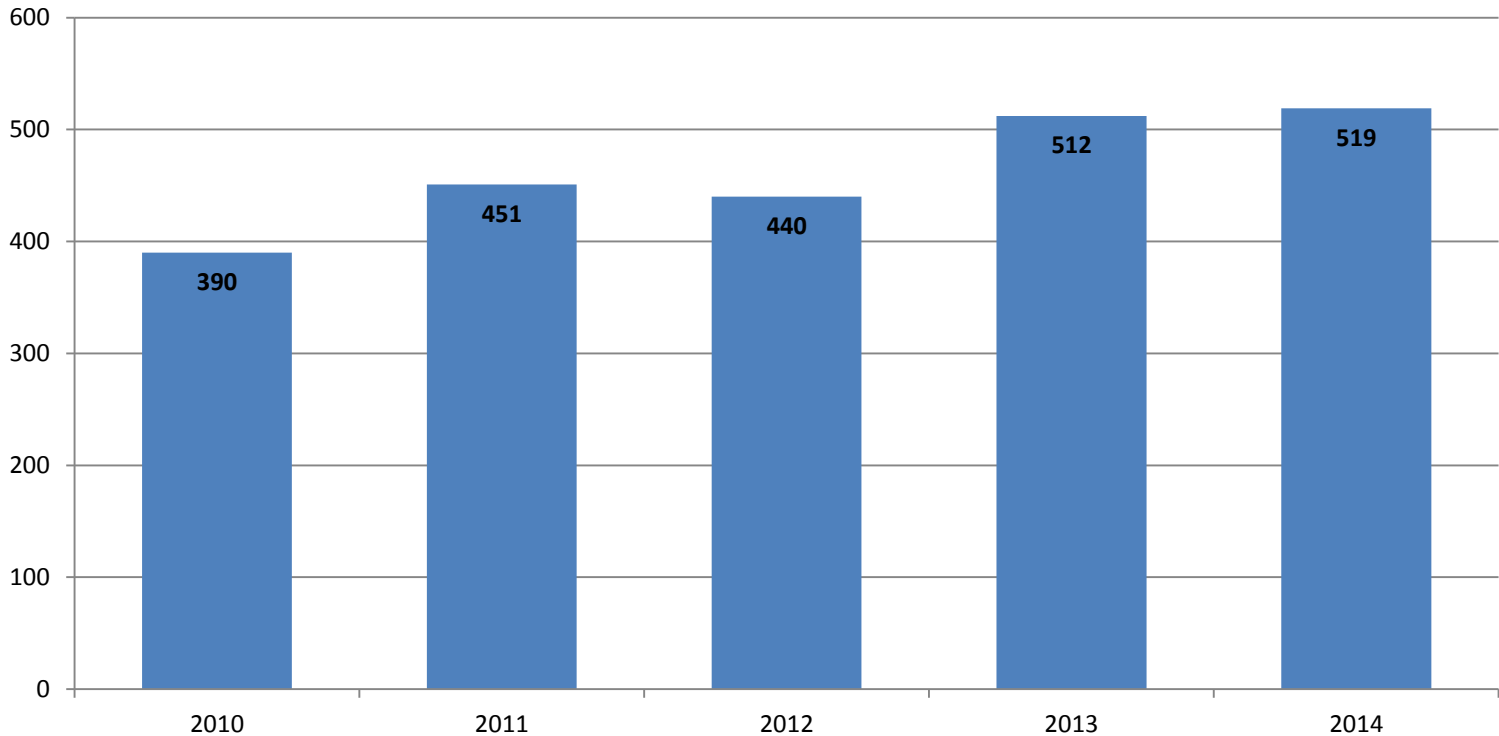


The percent of graduate and professional degrees awarded to students from underrepresented groups at the University of Illinois at Chicago is higher than the peer median.

* Includes Black, Hispanic, American Indian, Native Hawaiian/Other Pacific Islander, and multi-racial students.

Note: Only includes master's and doctoral degrees, excludes certificates. Degrees awarded from July 1 to June 30 of each fiscal year.

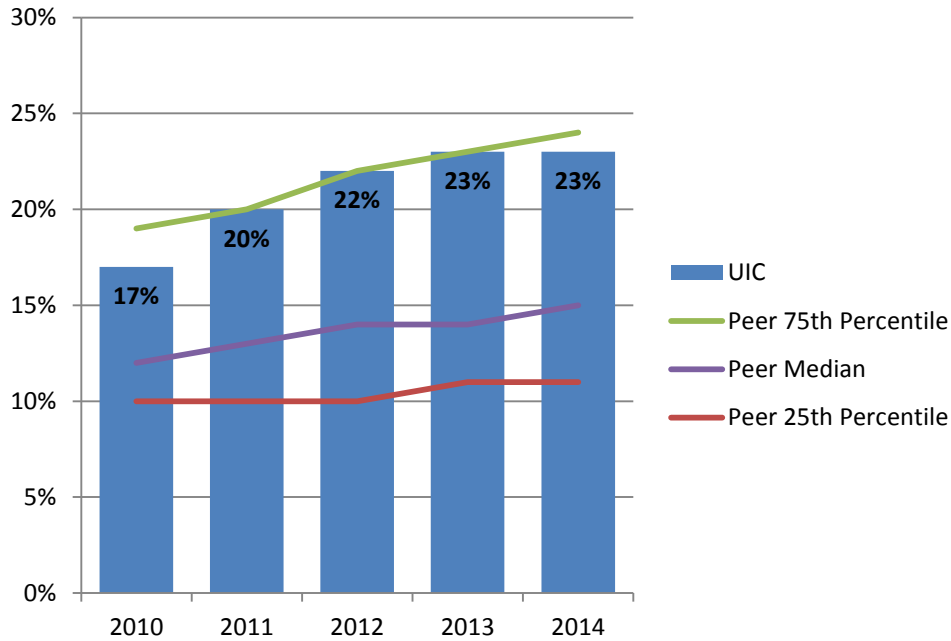
Number of Graduate and Professional Degrees Granted to Students from Underrepresented* Groups, FY 2010 – FY 2014



* Includes Black, Hispanic, American Indian, Native Hawaiian/Other Pacific Islander, and multi-racial students.

Note: Only includes master’s and doctoral degrees, excludes certificates. Degrees awarded from July 1 to June 30 of each fiscal year.

Percent Total Degrees Granted to Students from Underrepresented* Groups, FY 2010 – FY 2014

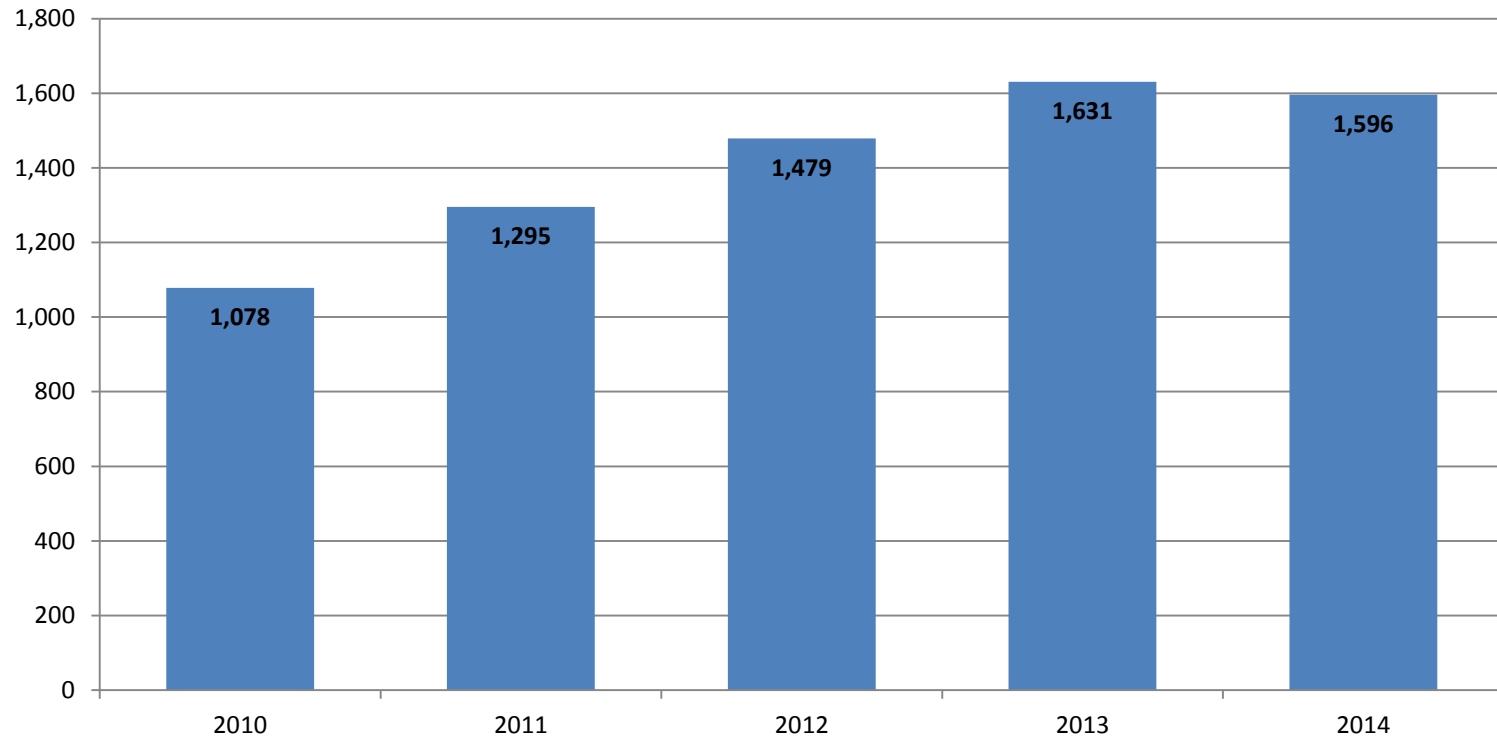


The percent of total degrees awarded to students from underrepresented groups at the University of Illinois at Chicago is higher than the peer median.

* Includes Black, Hispanic, American Indian, Native Hawaiian/Other Pacific Islander, and multi-racial students.

Note: Only includes bachelor's, master's and doctoral degrees; excludes associate degrees and certificates. Degrees awarded from July 1 to June 30 of each fiscal year.

Number of Total Degrees Granted to Students from Underrepresented* Groups, FY 2010 – FY 2014



* Includes Black, Hispanic, American Indian, Native Hawaiian/Other Pacific Islander, and multi-racial students.

Note: Only includes bachelor's, master's and doctoral degrees; excludes associate degrees and certificates. Degrees awarded from July 1 to June 30 of each fiscal year.

Graduate Education

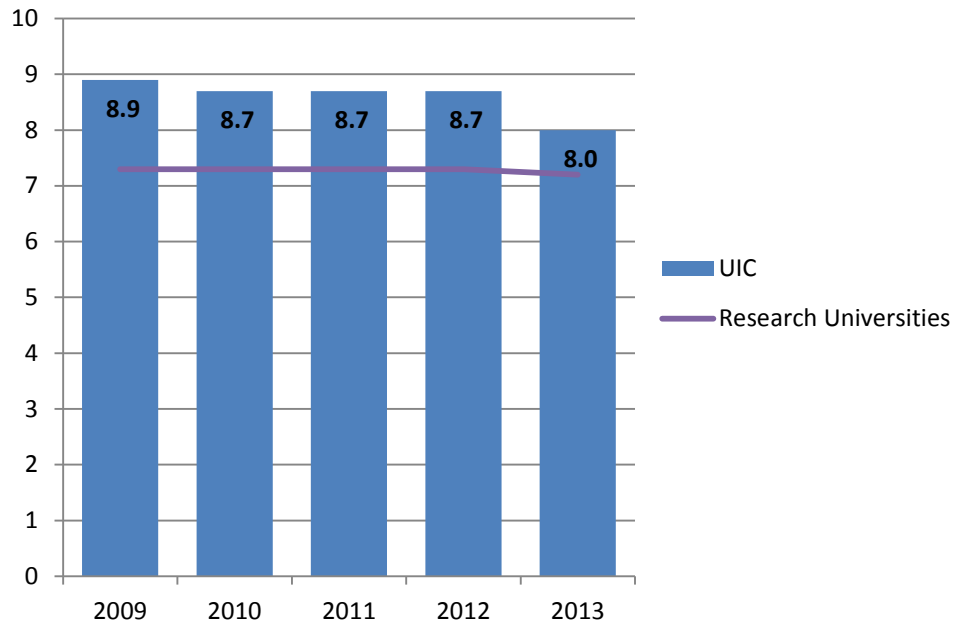


UIC Number of Doctoral Programs, Fall Terms 2010-2015

Field of Study	2010	2011	2012	2013	2014	2015
Education	7	7	6	6	6	6
Engineering	7	7	7	7	7	7
Humanities	7	7	8	8	8	7
Life Sciences	28	27	26	26	24	26
Other non-science and Engineering	3	3	3	3	3	3
Physical Sciences	7	7	7	6	6	7
Social Sciences	11	10	11	10	10	10
Total	70	68	68	66	64	66

Note: Count of programs with enrollment in Fall terms, including those programs in phase down. Fields of study at concentration level have been excluded.

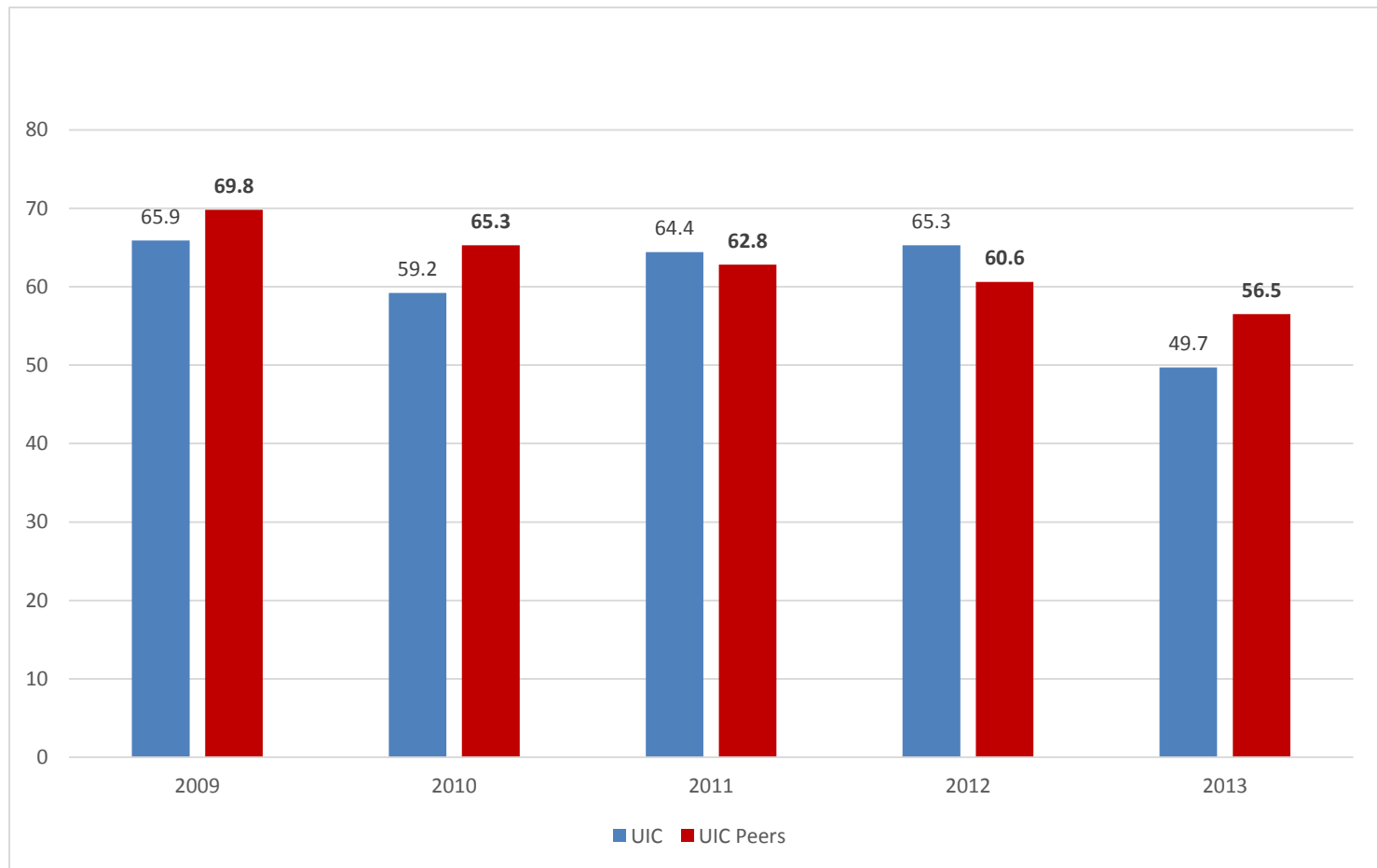
Doctoral Median Time to Degree Since Starting Graduate School (Number of Years), AY 2009 – AY 2013



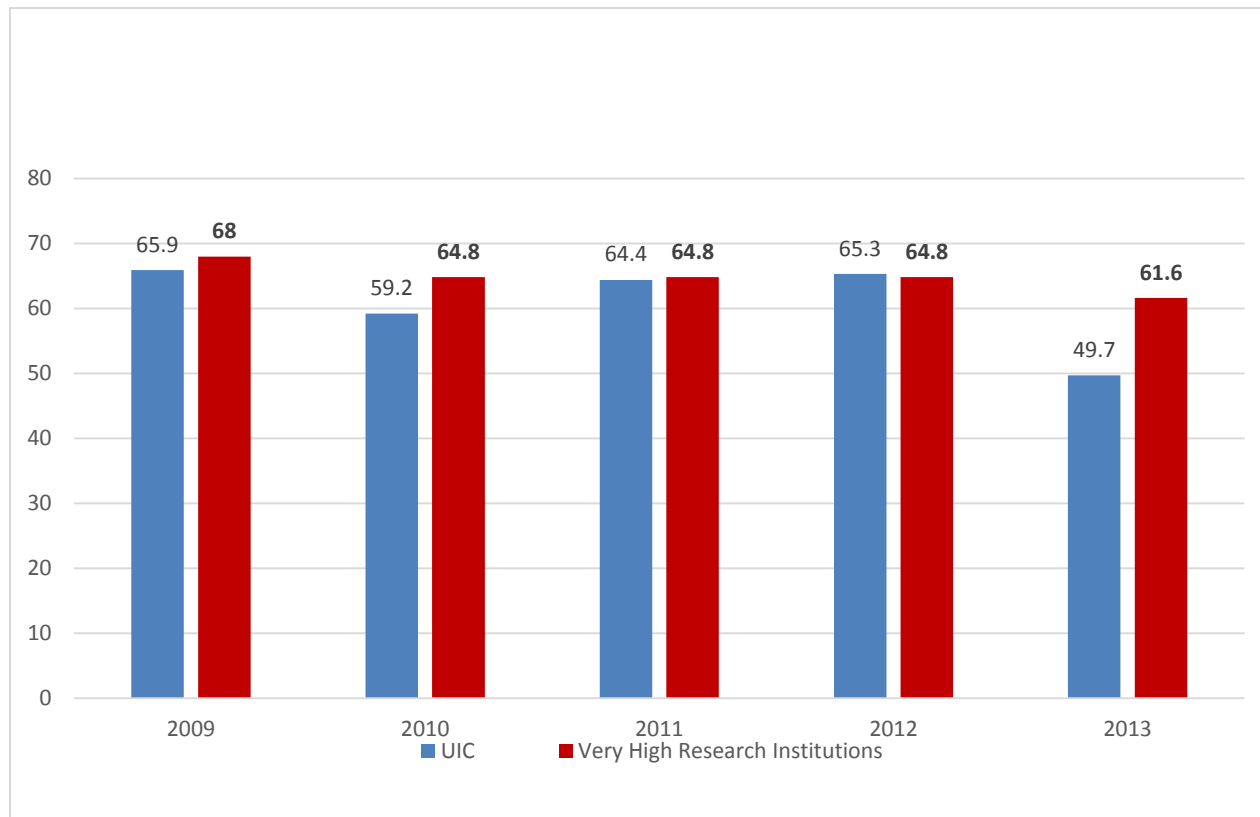
The time taken to complete a doctoral degree at the University of Illinois at Chicago is higher than at other research universities on average.

Data Source: Institutional Profile from the Survey of Earned Doctorates.

Percent Doctorates with Employment or Postdoctoral Research Training Commitments, AY 2009 – AY 2013



Percent Doctorates with Employment or Postdoctoral Research Training Commitments, AY 2009 – AY 2013



It is important to note that an individual checking “Seeking employment or study” may not be unemployed. Many students return to their graduate research groups after they turn in their dissertations (and fill out the Survey of Earned Doctorates) while they search for a job/postdoc. They are employed at a higher level than they were as graduate students, but are “seeking” employment elsewhere. A more granular look at which students reported that they were seeking employment did not reveal any obvious patterns or differences between STEM and non-STEM students.

