

University of Illinois at Chicago

Dashboard Indicators

**ENROLLMENTS, GRADUATION AND RETENTION RATES,
DEGREES AWARDED, AND GRADUATE EDUCATION UPDATES BY:**

University Office for Planning and Budgeting

OCTOBER 1, 2014

PRESENTED BY:

CHANCELLOR PAULA ALLEN-MEARES

NOVEMBER 13, 2014

Reported to the Board of Trustees
November 13, 2014

Standard Peer Group



University of Illinois at Chicago

Florida State University

Temple University*

University of Alabama at Birmingham

University of Arizona - Tucson

University of California - Irvine

University of Cincinnati

University of Colorado Denver*

University of New Mexico - Albuquerque

University of South Florida - Tampa

Virginia Commonwealth University

Wayne State University

* State-related research institution.

Chicago-area Comparison Group



University of Illinois at Chicago

Chicago State University

Columbia College, Chicago*

DePaul University*

Illinois Institute of Technology*

Loyola University, Chicago*

North Park University

Northeastern Illinois University

Northwestern University

Roosevelt University*

Saint Xavier University*

University of Chicago*

* Private institution.

Enrollments



UIC and Standard Peer Group Fall Term Enrollment

Fall 2008 – Fall 2013

Institution	All Student Total						Undergraduate						Graduate and Professional					
	2008	2009	2010	2011	2012	2013	2008	2009	2010	2011	2012	2013	2008	2009	2010	2011	2012	2013
University of Illinois at Chicago	25,835	26,840	27,850	28,091	27,875	28,038	15,665	16,044	16,806	16,925	16,678	16,671	10,170	10,796	11,044	11,166	11,197	11,367
Florida State University	38,682	39,785	40,416	41,087	40,695		29,869	30,803	31,418	32,201	32,171		8,813	8,982	8,998	8,886	8,524	
Temple University	35,490	36,507	37,367	36,855	36,744		26,195	27,047	27,623	27,710	27,567		9,295	9,460	9,744	9,145	9,177	
University of Alabama at Birmingham	16,149	16,874	17,543	17,575	17,999		10,369	10,646	11,028	11,128	11,291		5,780	6,228	6,515	6,447	6,708	
University of Arizona - Tucson	38,057	38,767	39,086	39,236	40,223		29,716	30,346	30,592	30,665	31,565		8,341	8,421	8,494	8,571	8,658	
University of California - Irvine	26,984	27,142	26,994	27,189	27,479		22,122	22,226	21,976	22,004	22,216		4,862	4,916	5,018	5,185	5,263	
University of Cincinnati	29,617	31,134	32,283	33,329	33,347		20,914	21,884	22,449	22,893	23,096		8,703	9,250	9,834	10,436	10,251	
University of Colorado Denver	21,903	23,715	24,108	22,495	22,396		12,087	13,246	13,337	12,674	13,103		9,816	10,469	10,771	9,821	9,293	
University of New Mexico - Albuquerque	25,754	27,241	28,688	28,977	29,033		20,047	21,332	22,476	22,643	22,773		5,707	5,909	6,212	6,334	6,260	
University of South Florida - Tampa	46,189	40,022	40,431	39,596	41,116		35,918	30,536	30,914	29,975	31,125		10,271	9,486	9,517	9,621	9,991	
Virginia Commonwealth University	32,044	32,172	32,027	31,627	31,445		22,552	22,886	23,217	23,498	23,661		9,492	9,286	8,810	8,129	7,784	
Wayne State University	31,024	31,786	31,505	30,765	28,938		20,122	20,765	20,837	20,589	19,342		10,902	11,021	10,668	10,176	9,596	

UIC Fall 2014 On-Campus Counts

All Student Total 27,563

Undergraduate 16,707

Graduate and Professional 10,856

Data Source: IPEDS Data Center. Includes on- and off-campus enrollments.

UIC and Chicago-area Comparison Group Fall Term Enrollment

Fall 2008 – Fall 2013

Institution	All Student Total						Undergraduate						Graduate and Professional					
	2008	2009	2010	2011	2012	2013	2008	2009	2010	2011	2012	2013	2008	2009	2010	2011	2012	2013
University of Illinois at Chicago	25,835	26,840	27,850	28,091	27,875	28,038	15,665	16,044	16,806	16,925	16,678	16,671	10,170	10,796	11,044	11,166	11,197	11,367
Chicago State University	6,820	7,235	7,354	6,882	6,107		5,211	5,398	5,667	5,280	4,618		1,609	1,837	1,687	1,602	1,489	
Columbia College Chicago	12,464	12,127	11,922	11,625	10,783		11,858	11,592	11,400	11,138	10,310		606	535	522	487	473	
DePaul University	24,352	25,072	25,145	25,398	24,966		15,782	16,199	16,052	16,384	16,498		8,570	8,873	9,093	9,014	8,468	
Illinois Institute of Technology	7,453	7,707	7,774	7,787	7,684		2,639	2,665	2,602	2,714	2,801		4,814	5,042	5,172	5,073	4,883	
Loyola University Chicago	15,670	15,879	15,951	16,040	15,720		10,124	10,077	9,747	9,856	9,723		5,546	5,802	6,204	6,184	5,997	
North Park University	3,244	3,186	3,233	3,220	3,141		2,263	2,198	2,224	2,230	2,203		981	988	1,009	990	938	
Northeastern Illinois University	12,320	11,631	11,746	11,580	11,149		10,114	9,191	9,498	9,421	9,140		2,206	2,440	2,248	2,159	2,009	
Northwestern University	19,291	19,853	20,481	20,959	21,215		9,336	9,555	9,535	9,466	9,376		9,955	10,298	10,946	11,493	11,839	
Roosevelt University	7,692	7,306	6,766	6,620	6,343		4,389	4,182	3,919	3,908	3,795		3,303	3,124	2,847	2,712	2,548	
Saint Xavier University	5,337	5,028	4,852	4,709	4,384		3,169	3,084	2,968	2,993	2,843		2,168	1,944	1,884	1,716	1,541	
University of Chicago	14,788	15,094	15,152	14,979	15,245		5,031	5,114	5,270	5,402	5,618		9,757	9,980	9,882	9,577	9,627	

UIC Fall 2014 On-Campus Counts

All Student Total 27,563

Undergraduate 16,707

Graduate and Professional 10,856

Data Source: IPEDS Data Center. Includes on- and off-campus enrollments.

UIC and Standard Peer Group First-Time Freshmen Enrollment Fall 2008 – Fall 2013

	2008	2009	2010	2011	2012	2013
University of Illinois at Chicago	2,964	3,147	3,204	3,115	3,123	3,104
Florida State University	5,012	5,955	5,927	6,121	5,712	
Temple University	4,186	4,203	4,329	4,276	4,132	
University of Alabama at Birmingham	1,277	1,517	1,571	1,606	1,676	
University of Arizona - Tucson	6,709	6,966	7,025	7,300	7,401	
University of California - Irvine	4,583	4,030	4,411	5,115	5,077	
University of Cincinnati	3,876	4,301	3,936	4,300	4,160	
University of Colorado Denver	1,125	1,124	1,111	947	1,030	
University of New Mexico - Albuquerque	3,225	3,409	3,604	3,341	3,424	
University of South Florida - Tampa	4,417	3,767	4,430	3,378	3,750	
Virginia Commonwealth University	3,679	3,665	3,555	3,742	3,554	
Wayne State University	2,917	3,046	2,683	2,466	2,336	

UIC Fall 2014 on-campus first-time freshmen = 3,030

Data Source: IPEDS Data Center.

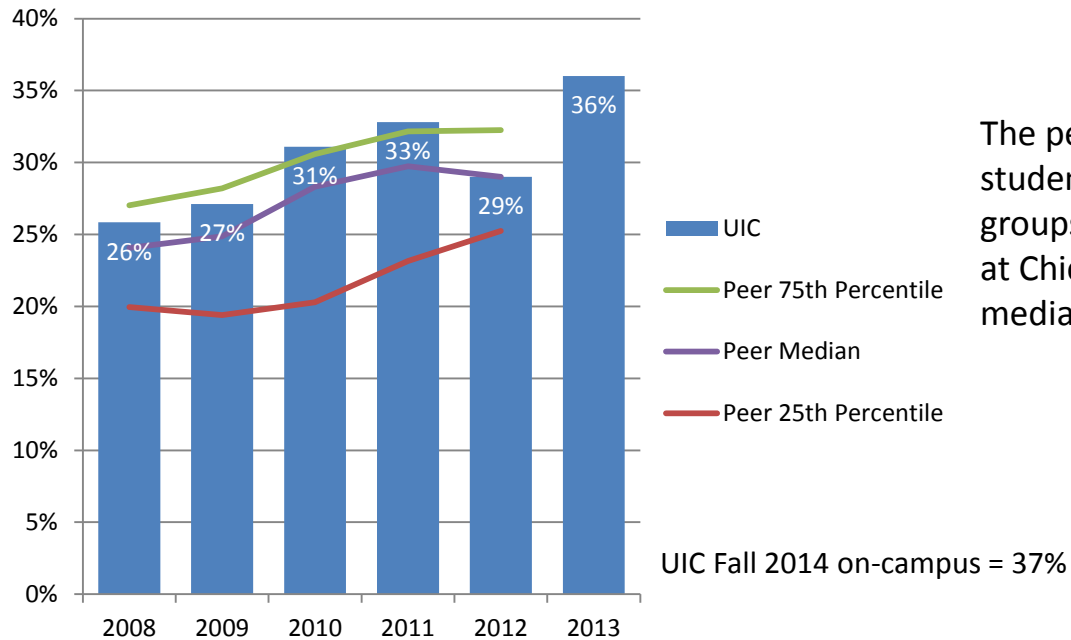
UIC and Chicago-area Comparison Group First-Time Freshmen Enrollment Fall 2008 – Fall 2013

	<u>2008</u>	<u>2009</u>	<u>2010</u>	<u>2011</u>	<u>2012</u>	<u>2013</u>
University of Illinois at Chicago	2,964	3,147	3,204	3,147	3,123	3,104
Chicago State University	450	651	544	486	323	
Columbia College Chicago	2,387	2,158	2,252	2,148	2,091	
DePaul University	2,555	2,531	2,241	2,458	2,593	
Illinois Institute of Technology	530	459	403	448	406	
Loyola University Chicago	2,176	2,076	2,063	1,930	2,003	
North Park University	414	362	375	425	346	
Northeastern Illinois University	1,017	1,071	1,042	950	1,040	
Northwestern University	2,078	2,128	2,128	2,107	2,037	
Roosevelt University	502	596	502	448	553	
Saint Xavier University	550	439	491	583	475	
University of Chicago	1,305	1,336	1,387	1,411	1,527	

UIC Fall 2014 on-campus first-time freshmen = 3,030

Data Source: IPEDS Data Center.

Percent Enrolled Undergraduate Students from Underrepresented* Groups Fall 2008 – Fall 2013

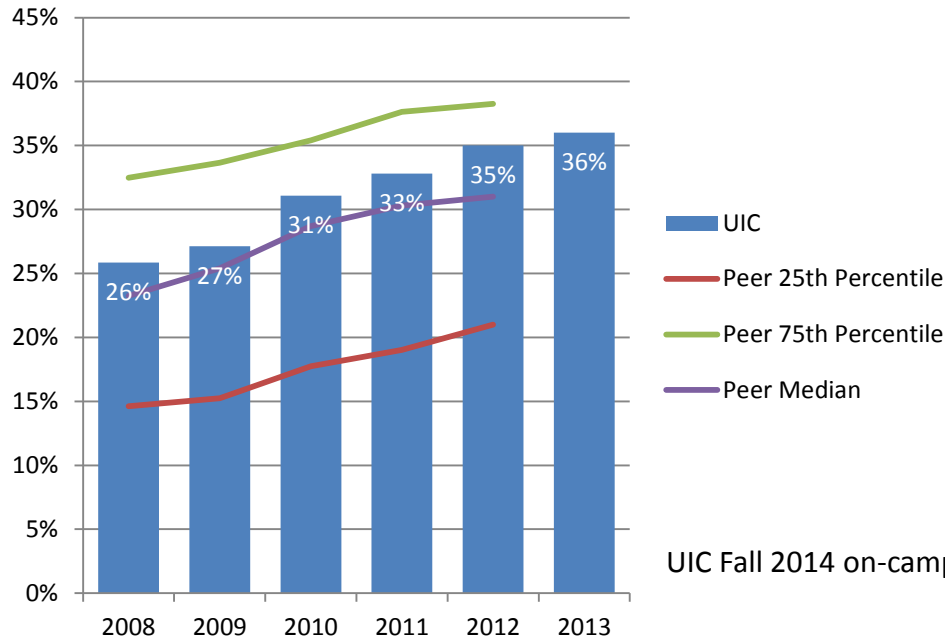


The percent of undergraduate students from underrepresented groups at the University of Illinois at Chicago is higher than the peer median.

* Includes Black, Hispanic, American Indian, Native Hawaiian/Other Pacific Islander, and multi-racial students.

UIC and Chicago-area Comparison Group

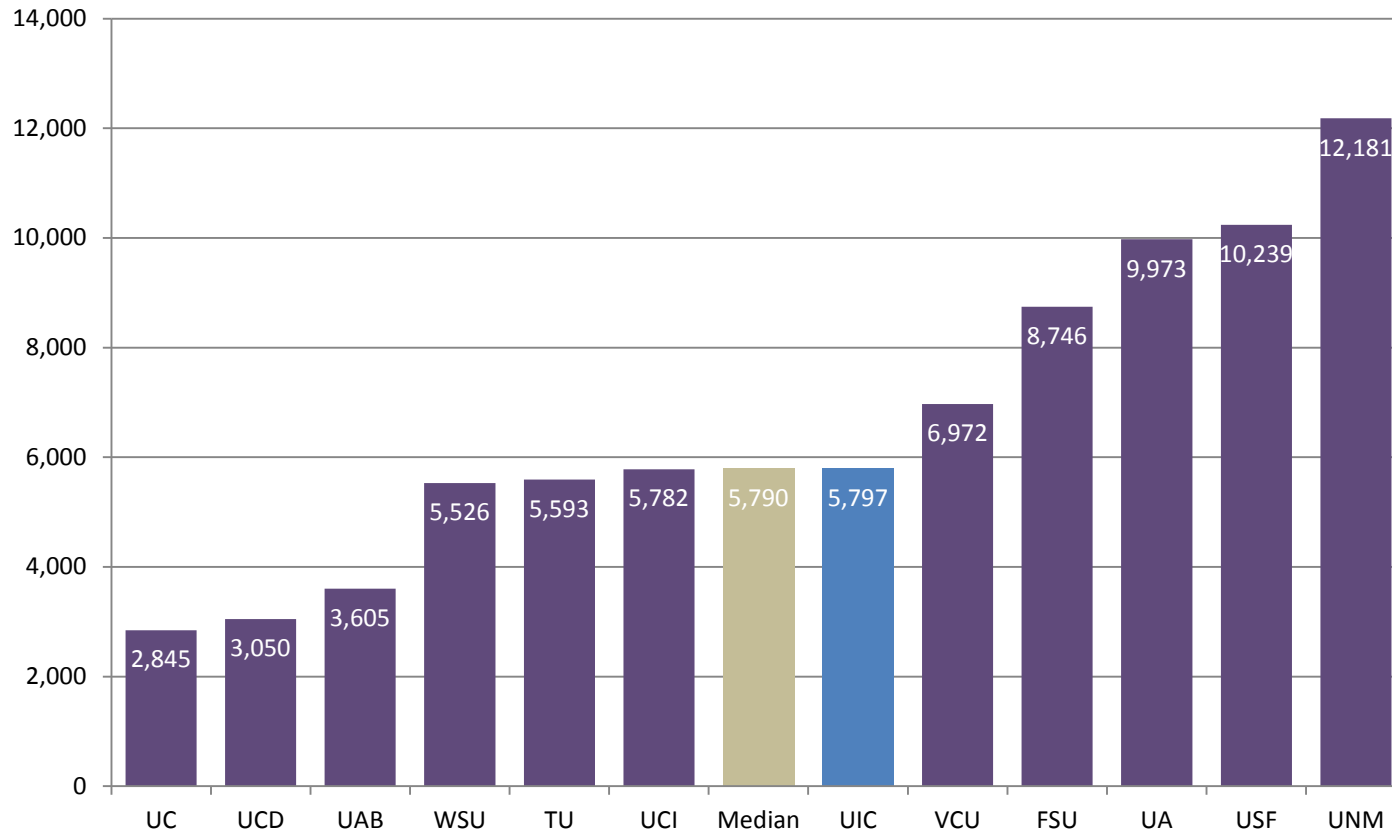
Percent Enrolled Undergraduate Students from Underrepresented* Groups: Fall 2008 – Fall 2013



The percent of undergraduate students from underrepresented groups at the University of Illinois at Chicago is higher than the peer median.

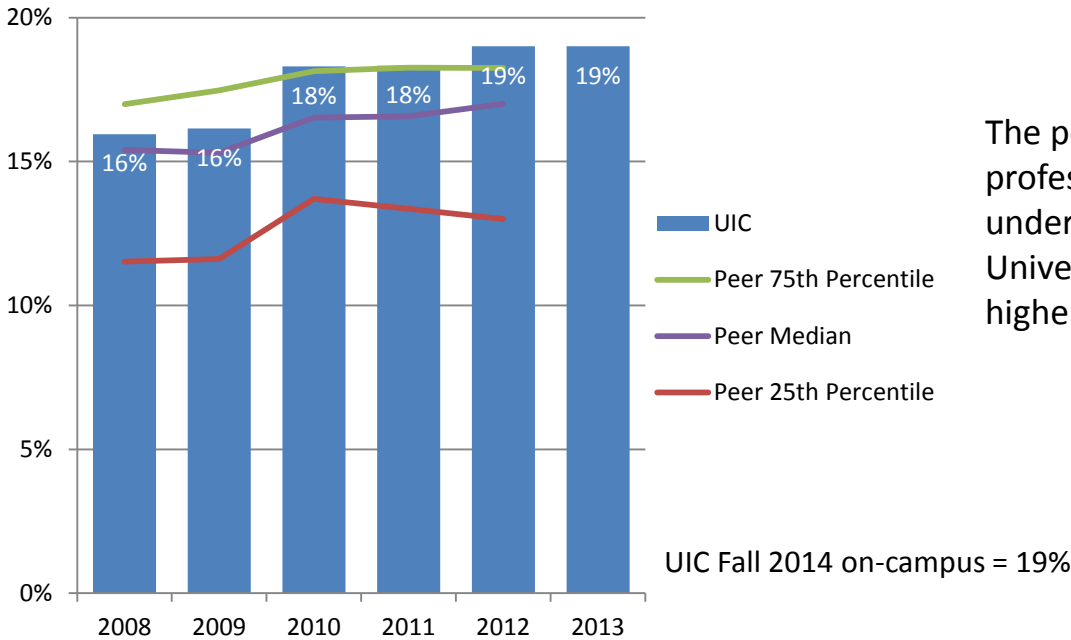
* Includes Black, Hispanic, American Indian, Native Hawaiian/Other Pacific Islander, and multi-racial students.

Enrolled Undergraduate Students from Underrepresented* Groups Fall 2012



* Includes Black, Hispanic, American Indian, Native Hawaiian/Other Pacific Islander, and multi-racial students.

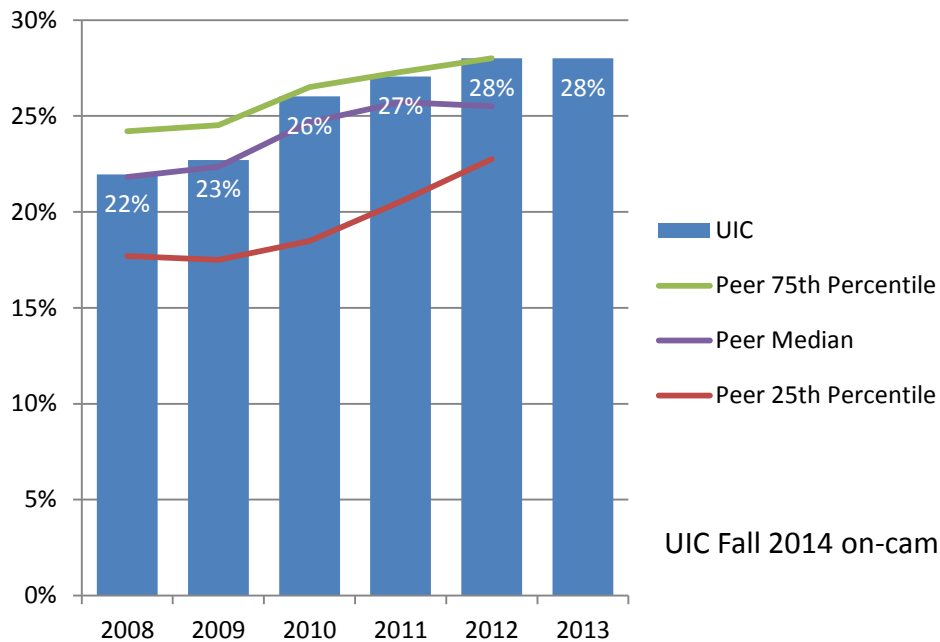
Percent Enrolled Graduate and Professional Students from Underrepresented* Groups Fall 2008 – Fall 2013



The percent of graduate and professional students from underrepresented groups at the University of Illinois at Chicago is higher than the peer median.

* Includes Black, Hispanic, American Indian, Native Hawaiian/Other Pacific Islander, and multi-racial students.

Percent All Enrolled Students from Underrepresented* Groups Fall 2008 – Fall 2013



The percent of total students from underrepresented groups at the University of Illinois at Chicago is at par or higher than the peer median.

UIC Fall 2014 on-campus = 30%

* Includes Black, Hispanic, American Indian, Native Hawaiian/Other Pacific Islander, and multi-racial students.

Enrollments: Goals



- Campus goal
- Campus goal

Action Items



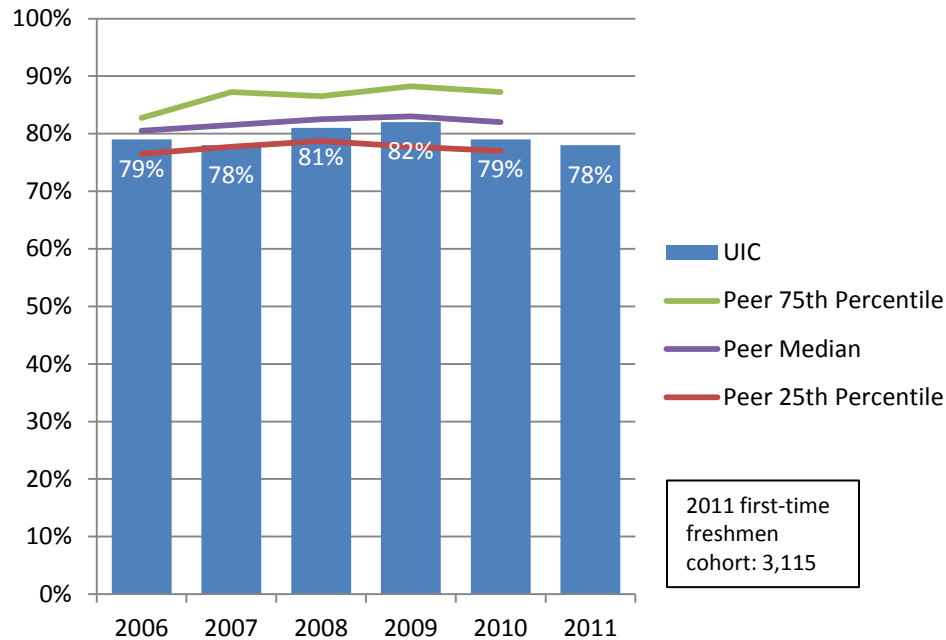
- Campus action item
- ★ Campus action item

- time-frame (1-2 year)
- ★ time-frame (3-5 year)

Graduation and Retention Rates

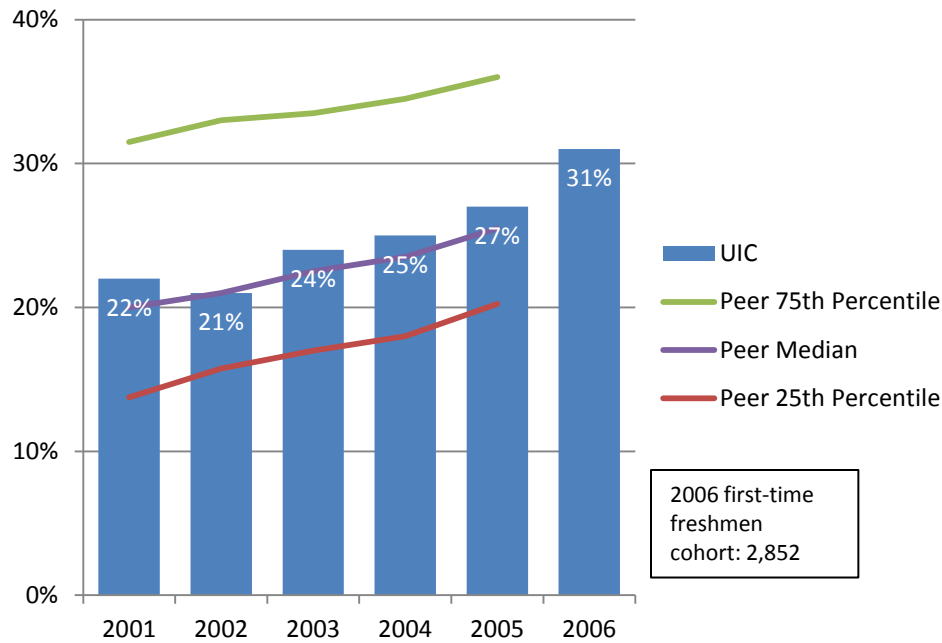


Freshman to Sophomore One-Year Retention Rates 2006 – 2011 Cohorts



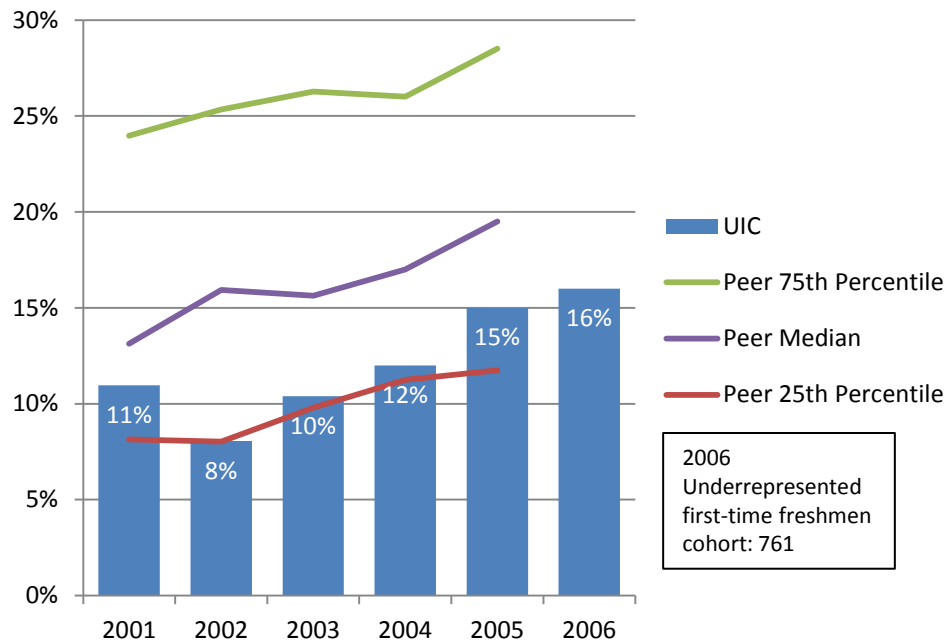
The freshman retention rate at the University of Illinois at Chicago is about the same as the peer median.

First-Time Freshmen Four-Year Graduation Rates 2001 – 2006 Cohorts



The four year graduation rate of undergraduate students at the University of Illinois at Chicago is higher than the peer median.

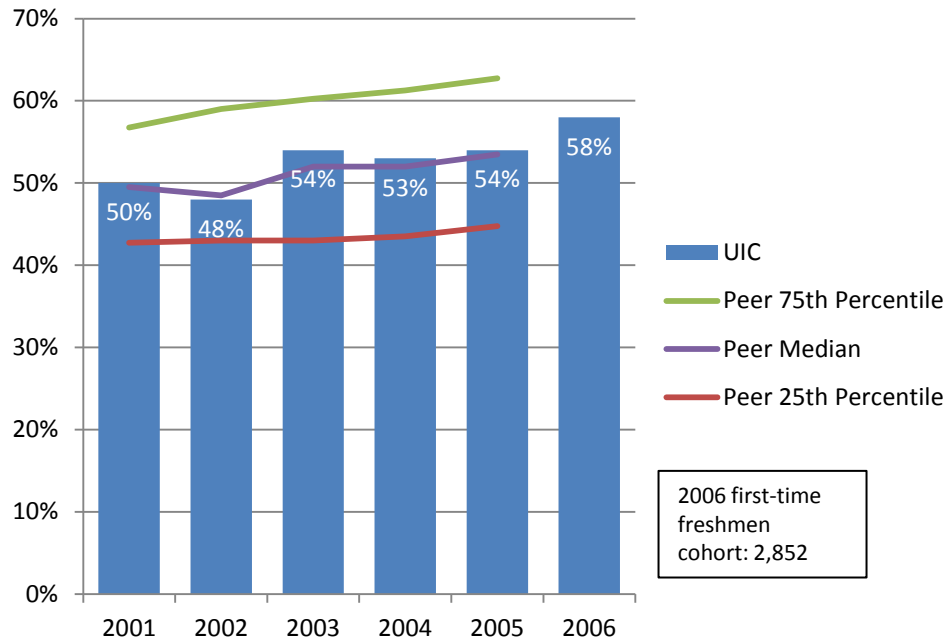
Percent First-Time Freshmen from Underrepresented* Groups Four-Year Graduation Rates 2001 – 2006 Cohorts



Compared to its peer median, the University of Illinois at Chicago graduates a lower percent of students from underrepresented groups within four years.

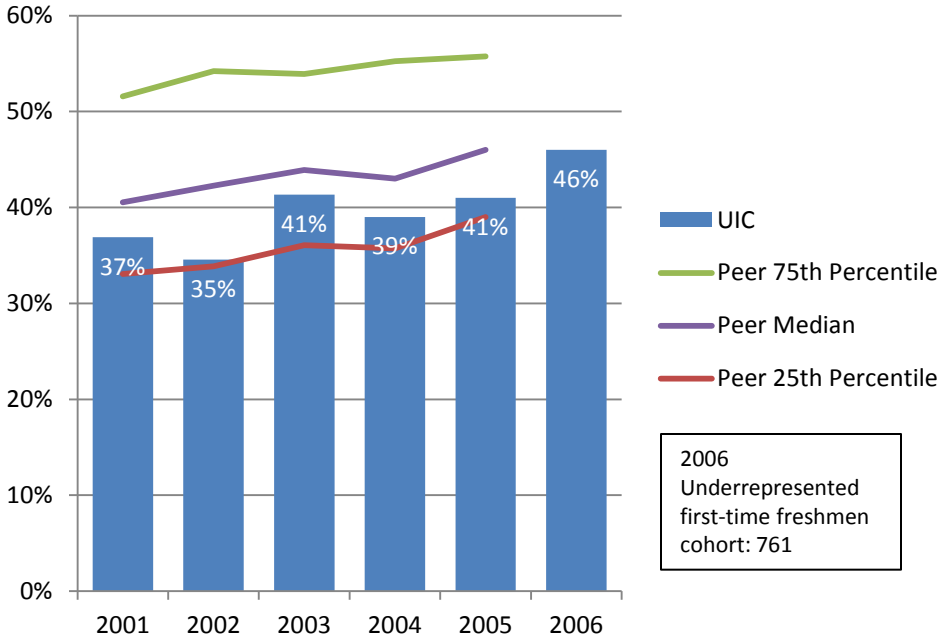
* Includes Black, Hispanic, American Indian, Native Hawaiian/Other Pacific Islander, and multi-racial students.

First-Time Freshmen Six-Year Graduation Rates 2001 – 2006 Cohorts



The six year graduation rate of undergraduate students at the University of Illinois at Chicago is on par with the peer median.

Percent First-Time Freshmen from Underrepresented* Groups Six-Year Graduation Rates 2001 – 2006 Cohorts



Compared to its peer median, the University of Illinois at Chicago graduates a lower percent of students from underrepresented groups within six years.

* Includes Black, Hispanic, American Indian, Native Hawaiian/Other Pacific Islander, and multi-racial students.

Graduation and Retention Rates: Goals



- Campus goal
- Campus goal

Action Items



- Campus action item
- ★ Campus action item

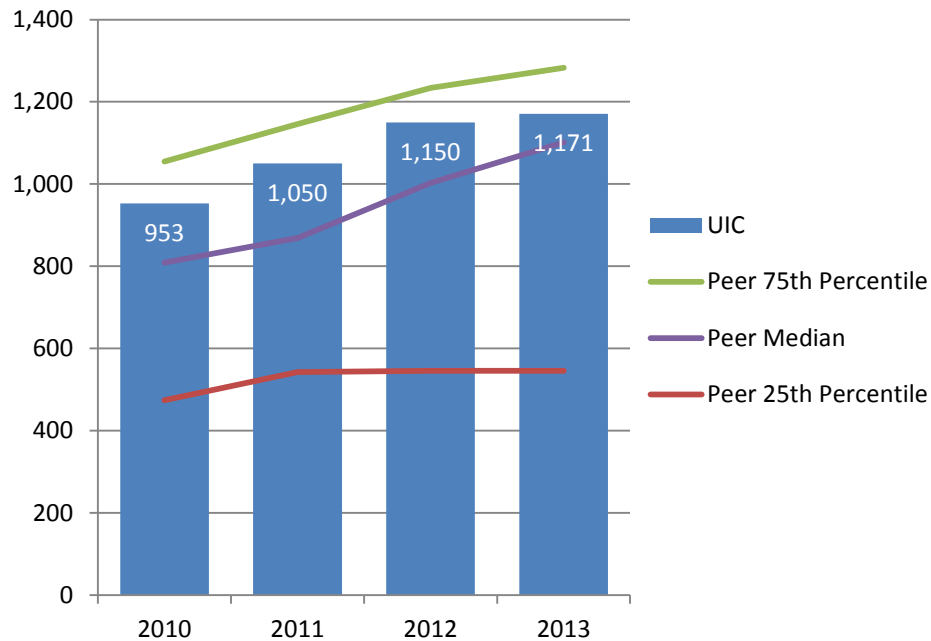
- time-frame (1-2 year)
- ★ time-frame (3-5 year)

Degrees Awarded



UIC and Standard Peer Group

Number of Degrees Granted in STEM* Fields - Bachelor's: FY 2010 – FY 2013

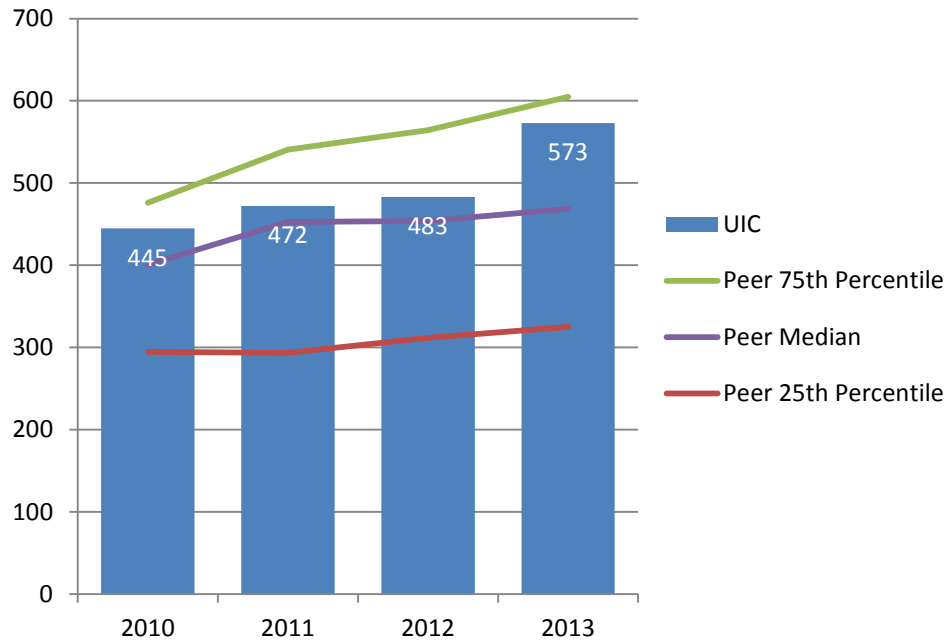


University of Illinois at Chicago grants more undergraduate degrees in STEM fields than its peer median.

* Science, Technology, Engineering, and Mathematics.

UIC and Standard Peer Group

Number of Degrees Granted in STEM* Fields - Master's and Doctorate: FY 2010 – FY 2013

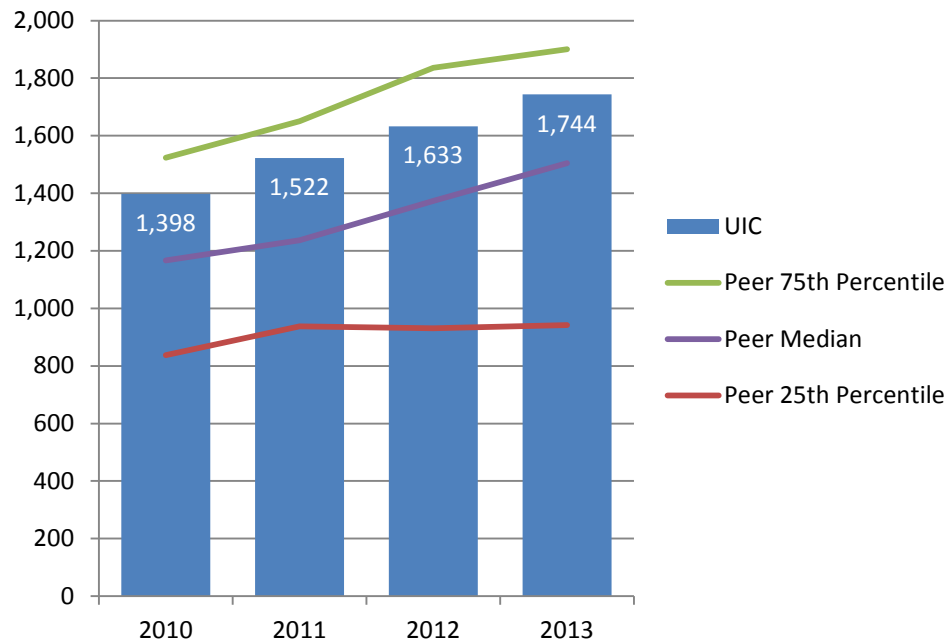


University of Illinois at Chicago grants more graduate degrees in STEM fields than its peer median.

* Science, Technology, Engineering, and Mathematics.

UIC and Standard Peer Group

Number of Degrees Granted in STEM* Fields - Total Degrees: FY 2010 – FY 2013

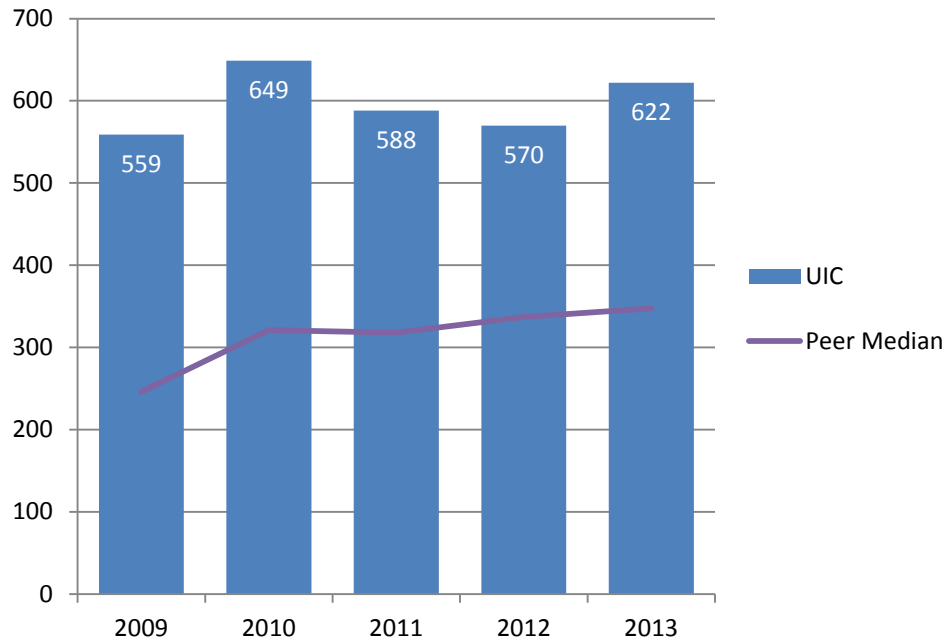


In total, the University of Illinois at Chicago grants more degrees in STEM fields than its peer median.

* Science, Technology, Engineering, and Mathematics.

UIC and Standard Peer Group

Number of Health-Related Degrees Granted - First-Professional Degree: FY 2008 – FY 2013

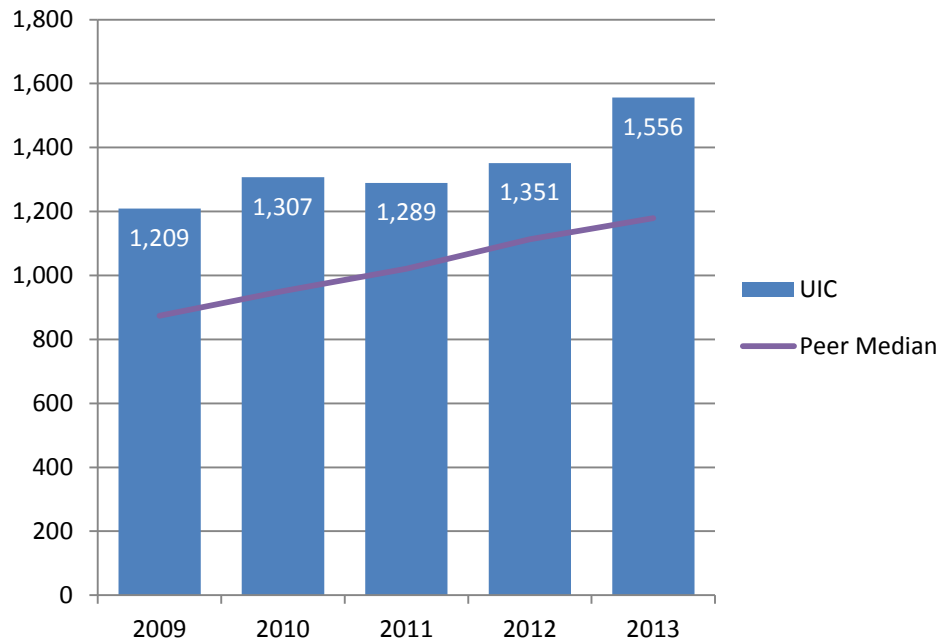


University of Illinois at Chicago grants more first-professional degrees in health-related fields than its peer median.

Note: Includes all degrees reported under CIP code 51.

UIC and Standard Peer Group

Number of Health-Related Degrees Granted – Total Degrees: FY 2008 – FY 2013

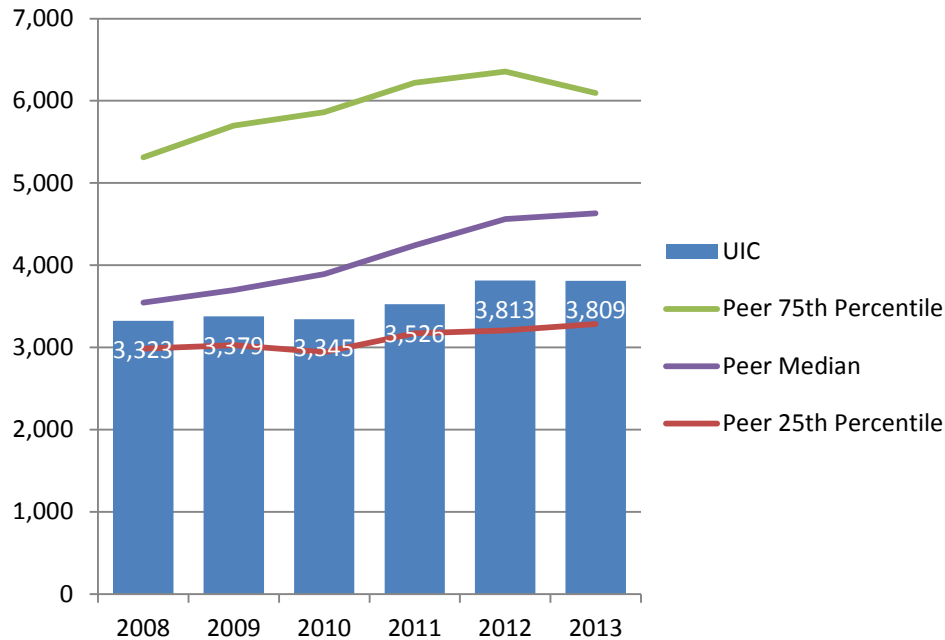


University of Illinois at Chicago grants more health-related degrees than its peer median.

Note: Includes all degrees reported under CIP code 51.

UIC and Standard Peer Group

Number of Degrees Granted – Bachelor's: FY 2008 – FY 2013

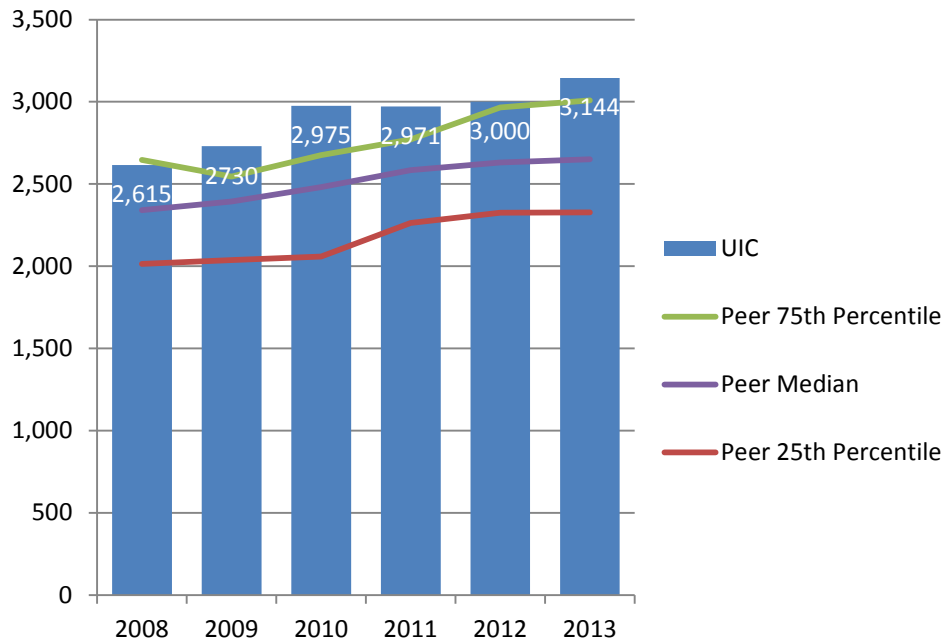


University of Illinois at Chicago grants fewer undergraduate degrees than its peer median.

Note: Only includes bachelor's degrees, excludes associate degrees and certificates. Degrees awarded from July 1 to June 30 of each fiscal year.

UIC Standard Peer Group

Number of Degrees Granted – Graduate and Professional: FY 2008 – FY 2013

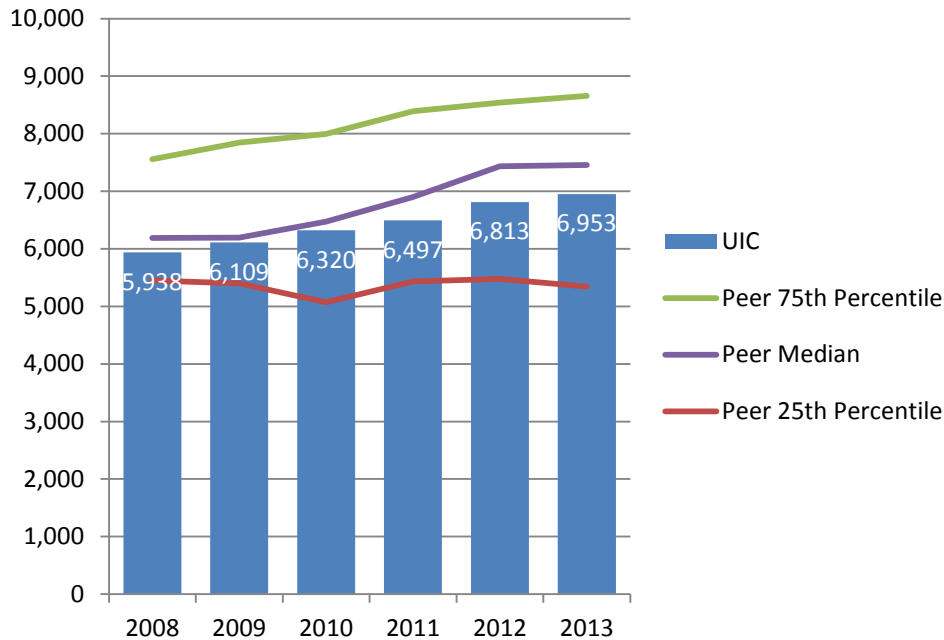


University of Illinois at Chicago grants more graduate and professional degrees than its peer median.

Note: Only includes master's and doctoral degrees, excludes certificates. Degrees awarded from July 1 to June 30 of each fiscal year.

UIC and Standard Peer Group

Number of Degrees Granted – Total Degrees: FY 2008 – FY 2013

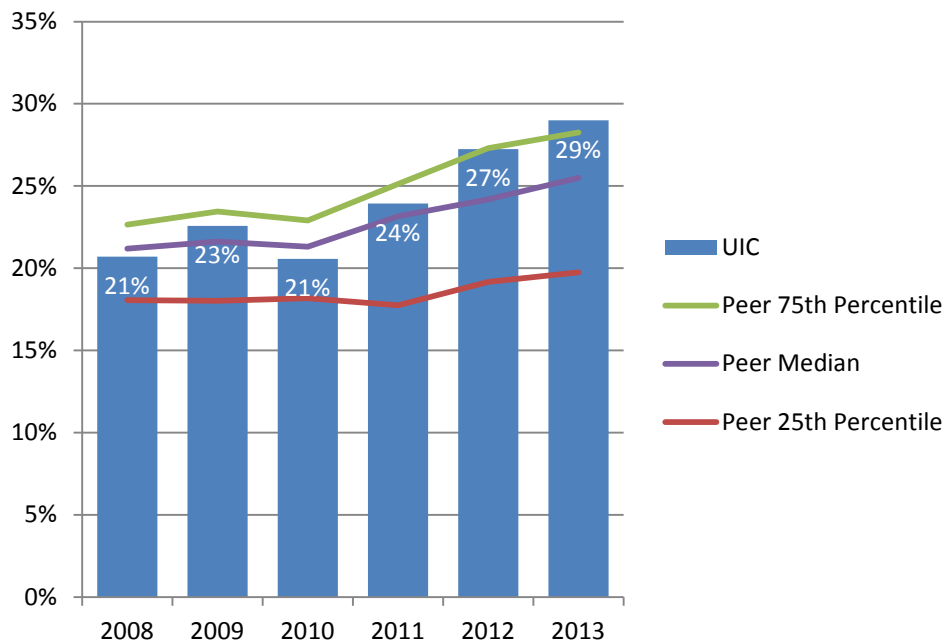


The number of degrees granted by the University of Illinois at Chicago is on par with its peer median.

Note: Only includes bachelor's, master's and doctoral degrees; excludes associate degrees and certificates. Degrees awarded from July 1 to June 30 of each fiscal year.

UIC Standard Peer Group

Percent Bachelor's Degrees Granted to Students from Underrepresented* Groups: FY 2008 – FY 2013



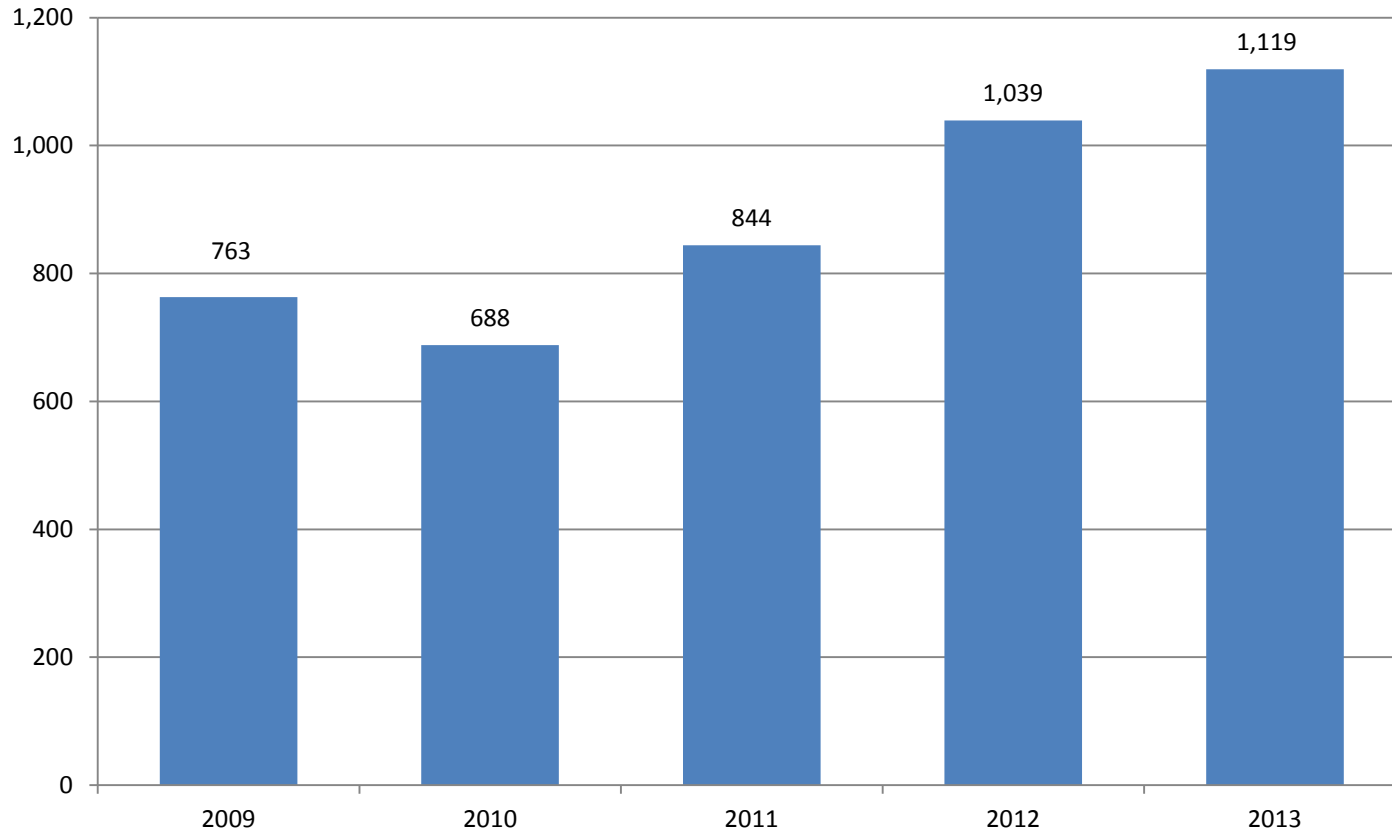
The percent of undergraduate degrees awarded to students from underrepresented groups at the University of Illinois at Chicago is on par with its peer median.

* Includes Black, Hispanic, American Indian, Native Hawaiian/Other Pacific Islander, and multi-racial students.

Note: Only includes bachelor's degrees, excludes associate degrees and certificates. Degrees awarded from July 1 to June 30 of each fiscal year.

UIC

Number of Bachelor's Degrees Granted to Students from Underrepresented* Groups: FY 2008 – FY 2013

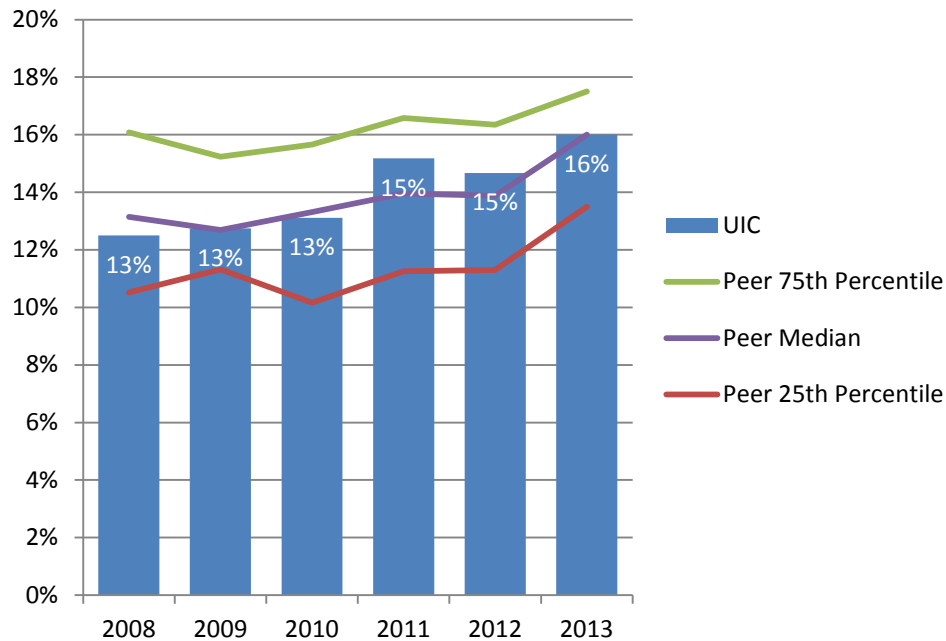


* Includes Black, Hispanic, American Indian, Native Hawaiian/Other Pacific Islander, and multi-racial students.

Note: Only includes bachelor's degrees, excludes associate degrees and certificates. Degrees awarded from July 1 to June 30 of each fiscal year.

UIC Standard Peer Group

Percent Graduate and Professional Degrees Granted to Students from Underrepresented* Groups: FY 2008 – FY 2013



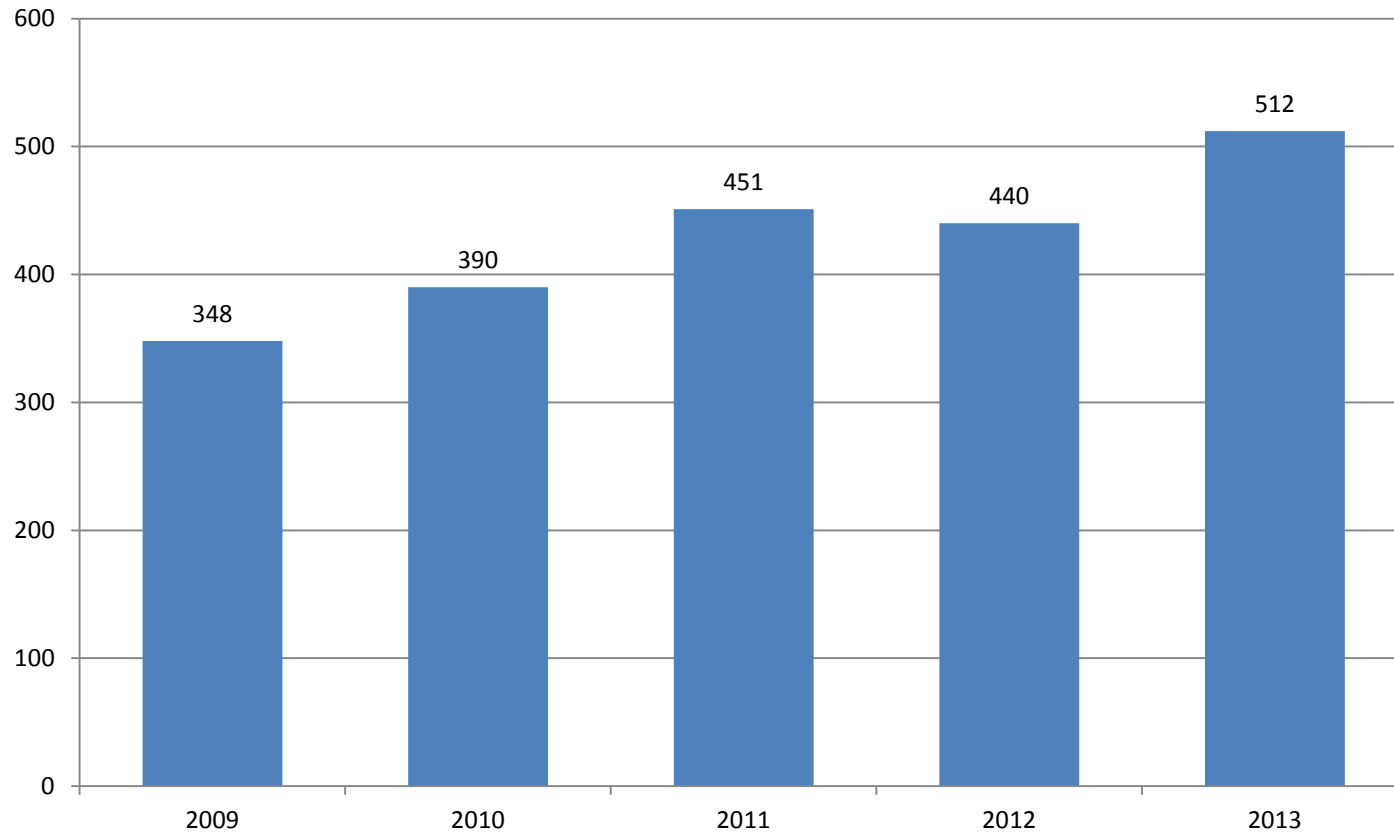
The percent of graduate and professional degrees awarded to students from underrepresented groups at the University of Illinois at Chicago is on par with its peer median.

* Includes Black, Hispanic, American Indian, Native Hawaiian/Other Pacific Islander, and multi-racial students.

Note: Only includes master's and doctoral degrees, excludes certificates. Degrees awarded from July 1 to June 30 of each fiscal year.

UIC

Number of Graduate and Professional Degrees Granted to Students from Underrepresented* Groups: FY 2008 – FY 2013

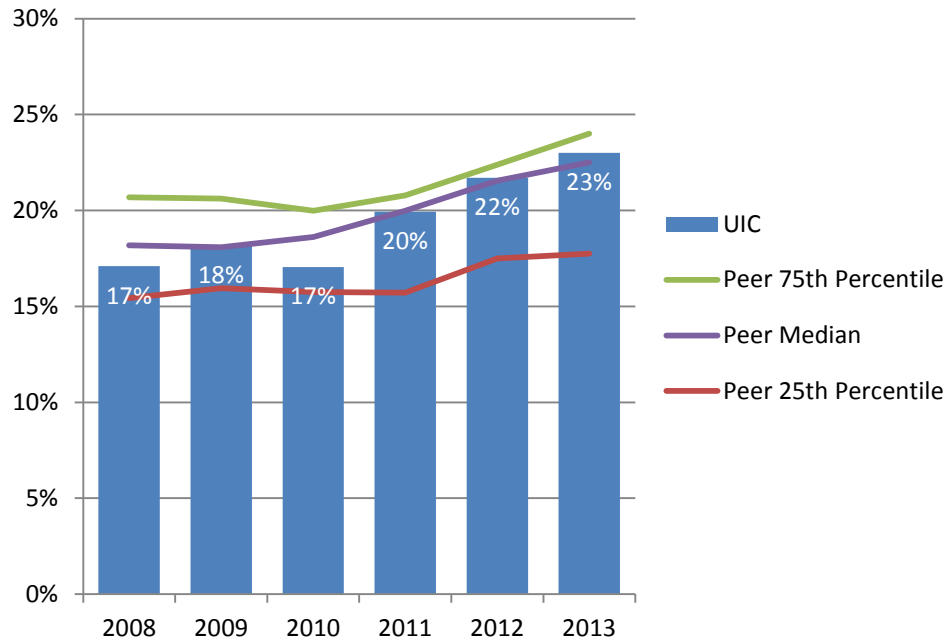


* Includes Black, Hispanic, American Indian, Native Hawaiian/Other Pacific Islander, and multi-racial students.

Note: Only includes master's and doctoral degrees, excludes certificates. Degrees awarded from July 1 to June 30 of each fiscal year.

UIC Standard Peer Group

Percent Total Degrees Granted to Students from Underrepresented* Groups: FY 2008 – FY 2013



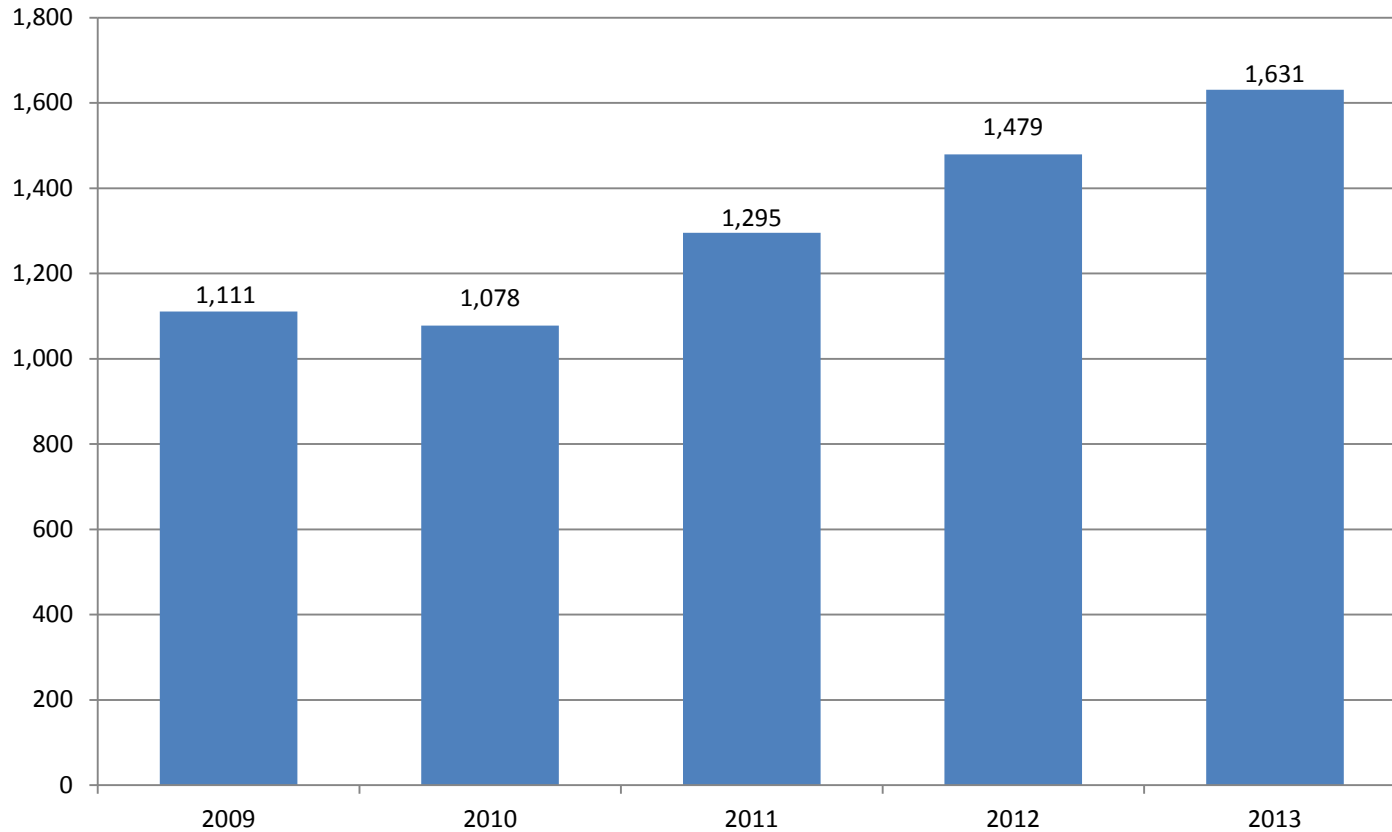
The percent of total degrees awarded to students from underrepresented groups at the University of Illinois at Chicago is on par with the peer median.

* Includes Black, Hispanic, American Indian, Native Hawaiian/Other Pacific Islander, and multi-racial students.

Note: Only includes bachelor's, master's and doctoral degrees; excludes associate degrees and certificates. Degrees awarded from July 1 to June 30 of each fiscal year.

UIC

Number of Total Degrees Granted to Students from Underrepresented* Groups: FY 2008 – FY 2013



* Includes Black, Hispanic, American Indian, Native Hawaiian/Other Pacific Islander, and multi-racial students.

Note: Only includes bachelor's, master's and doctoral degrees; excludes associate degrees and certificates. Degrees awarded from July 1 to June 30 of each fiscal year.

Degrees Awarded: Goals



- Campus goal
- Campus goal

Action Items



- Campus action item
- ★ Campus action item

- time-frame (1-2 year)
- ★ time-frame (3-5 year)

Graduate Education



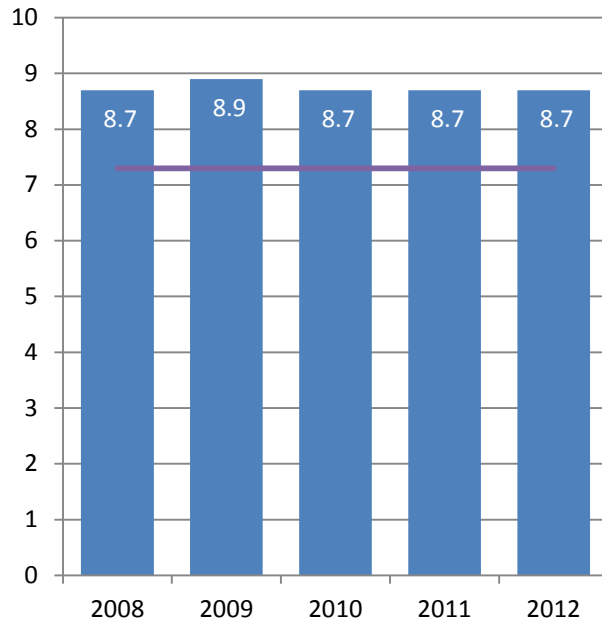
University of Illinois at Chicago Number of Doctoral Programs Fall 2013

<u>Field of Study</u>	<u>Number</u>
Life Sciences	20
Physical Sciences	6
Social Sciences	8
Engineering	7
Education	5
Humanities	8
Other non-Science and Engineering fields	4
Total	58

Note: List includes programs with enrollment in Fall 2013, including those programs in phase down. Fields of study at concentration level have been excluded.

UIC and National Research Universities

Doctoral Median Time to Degree Since Starting Graduate School (Number of Years): AY 2008 – AY 2012

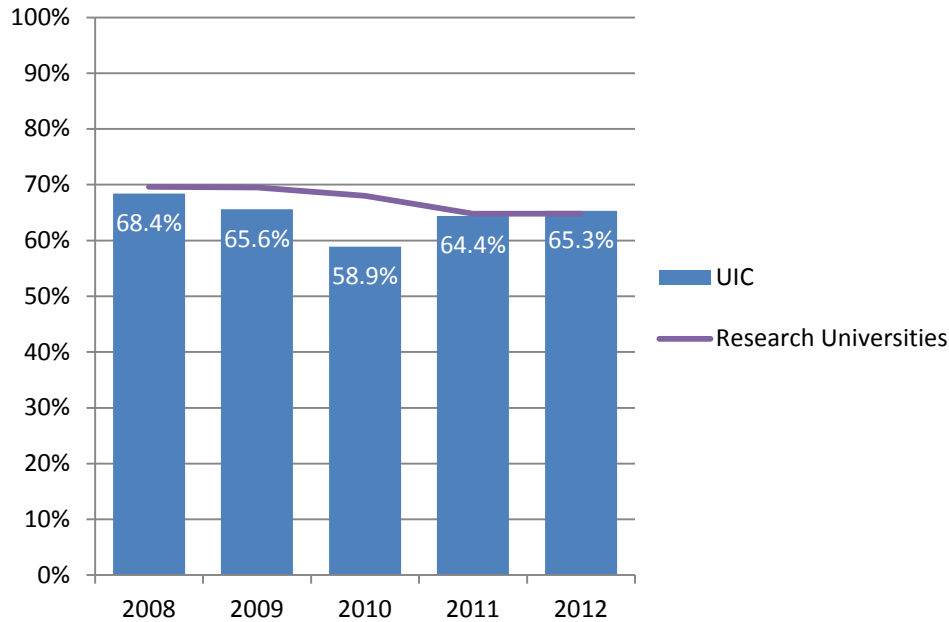


■ UIC
— Research Universities

The time taken to complete a doctoral degree at the University of Illinois at Chicago is higher than at other research universities on average.

UIC and National Research Universities

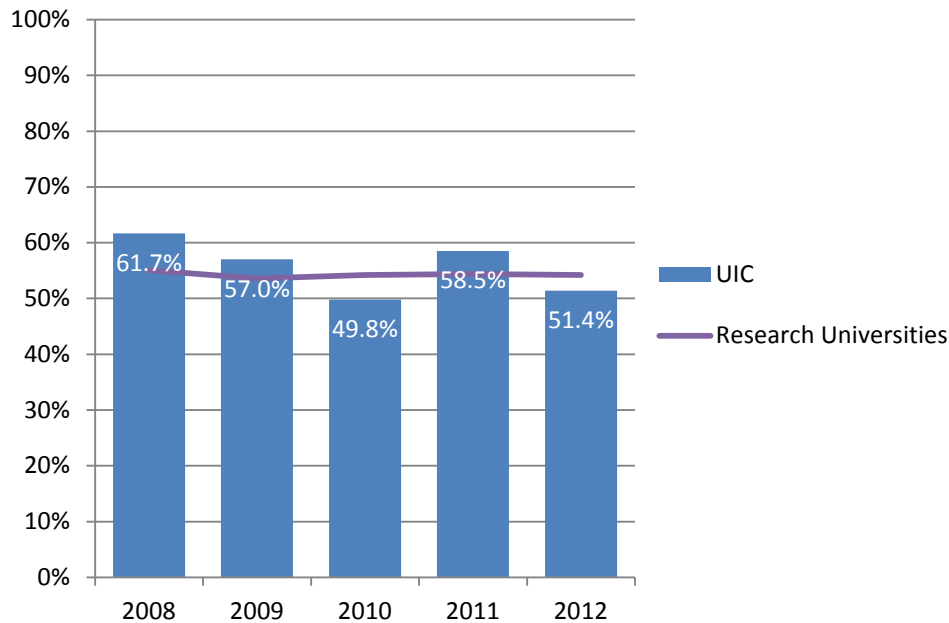
Percent Doctorates with Employment or Postdoctoral Research Training Commitments: AY 2008 – AY 2012



The percent of research doctorate recipients at the University of Illinois at Chicago who have definite commitments for employment or postdoctoral research training is on par or slightly lower than at other research universities.

UIC and National Research Universities

Percent Doctorates Having No Graduate or Undergraduate Education-Related Debt: AY 2008 – AY 2012



The percent of research doctorate recipients at the University of Illinois at Chicago who had no debt related to their undergraduate or graduate education when they were awarded their doctorate is on par or slightly higher than at other research universities.

Graduate Education: Goals



- Campus goal
- Campus goal

Action Items



- Campus action item
- ★ Campus action item

- time-frame (1-2 year)
- ★ time-frame (3-5 year)

Questions?

