

# University of Illinois at Springfield

## Performance Metrics

ENROLLMENTS, GRADUATION AND RETENTION RATES,  
DEGREE AWARDED, AND GRADUATE EDUCATION UPDATES BY:  
UNIVERSITY OFFICE FOR PLANNING AND BUDGETING  
OCTOBER 13, 2017

REPORTED BY:  
CHANCELLOR SUSAN J. KOCH  
NOVEMBER 16, 2017

Reported to the Board of Trustees  
November 16, 2017

# Peer Groups



## **University of Illinois at Springfield**

Auburn University - Montgomery

Clark University\*

College of Charleston

Georgia College and State University

Iona College\*

Lake Superior State University

Marist College\*

Northern Michigan University

Shippensburg University of Pennsylvania

State University of New York at Brockport

Trinity University (San Antonio, TX)\*

Union College (Schenectady, NY)\*

University of South Dakota

University of Wisconsin - Green Bay

\* Private Institution

# Enrollments



# University of Illinois at Springfield and Peer Institutions Fall Term Enrollment

## Fall 2011 – Fall 2017

Institution	All Student Total						Undergraduate						Graduate and Professional					
	2011	2012	2013	2014	2015	2016	2011	2012	2013	2014	2015	2016	2011	2012	2013	2014	2015	2016
<b>University of Illinois at Springfield</b>	<b>5,137</b>	<b>5,048</b>	<b>5,137</b>	<b>5,431</b>	<b>5,402</b>	<b>5,428</b>	<b>3,112</b>	<b>3,054</b>	<b>3,039</b>	<b>3,038</b>	<b>2,937</b>	<b>2,959</b>	<b>2,025</b>	<b>1,994</b>	<b>2,098</b>	<b>2,393</b>	<b>2,465</b>	<b>2,469</b>
Auburn University - Montgomery	5,305	5,005	5,084	5,057	4,919		4,403	4,240	4,322	4,377	4,257		902	765	762	680	662	
Clark University	3,462	3,503	3,551	3,423	3,485		2,311	2,352	2,380	2,301	2,394		1,151	1,151	1,171	1,122	1,091	
College of Charleston	11,649	11,723	11,619	11,456	11,531		10,461	10,506	10,488	10,440	10,468		1,188	1,217	1,131	1,016	1,063	
Georgia College and State University	6,636	6,444	6,551	6,772	6,889		5,635	5,568	5,729	5,927	6,036		1,001	876	822	845	853	
Iona College	4,065	4,241	4,241	3,909	3,977		3,189	3,462	3,539	3,301	3,271		876	779	702	608	706	
Lake Superior State University	2,805	2,590	2,435	2,407	2,249		2,727	2,582	2,429	2,406	2,249		78	8	6	1	0	
Marist College	6,303	6,377	6,365	6,356	6,474		5,442	5,560	5,566	5,516	5,576		861	817	799	840	898	
Northern Michigan University	9,405	9,159	8,918	8,781	8,303		8,712	8,474	8,221	8,001	7,507		693	685	697	780	796	
Shippensburg University of Pennsylvania	8,183	7,724	7,548	7,355	7,048		7,132	6,712	6,550	6,305	6,017		1,051	1,012	998	1,050	1,031	
SUNY College at Brockport	8,413	8,271	8,128	8,106	8,161		7,166	7,133	7,090	7,040	7,069		1,247	1,138	1,038	1,066	1,092	
Trinity University	2,535	2,458	2,358	2,432	2,438		2,331	2,286	2,161	2,241	2,233		204	172	197	191	205	
Union College	2,220	2,241	2,246	2,242	2,269		2,220	2,241	2,246	2,242	2,269		--	--	--	--	--	
University of South Dakota	9,970	10,284	10,235	10,061	9,971		7,473	7,690	7,633	7,541	7,435		2,497	2,594	2,602	2,520	2,536	
University of Wisconsin - Green Bay	6,671	6,801	6,668	6,927	6,784		6,451	6,622	6,445	6,674	6,533		220	179	223	253	251	

### UIS Fall 2017 Total Enrollments

All Student Total: 4,956

Undergraduate: 2,932

Graduate: 2,024

Data Source: IPEDS Data Center. Includes on- and off-campus enrollments.

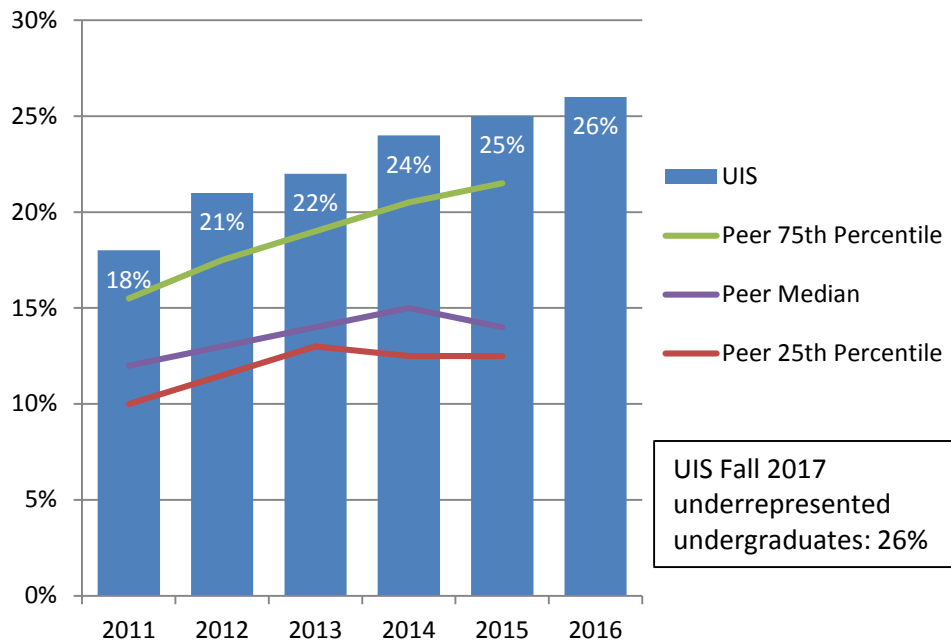
# University of Illinois at Springfield and Peer Institutions First-Time Freshmen Enrollment Fall 2011 – Fall 2017

	2011	2012	2013	2014	2015	2016
<b>University of Illinois at Springfield</b>	<b>241</b>	<b>270</b>	<b>316</b>	<b>305</b>	<b>268</b>	<b>300</b>
Auburn University - Montgomery	831	679	671	694	712	
Clark University	546	594	621	552	671	
College of Charleston	2,334	2,138	2,116	2,166	2,237	
Georgia College and State University	1,209	1,311	1,395	1,465	1,475	
Iona College	812	722	922	802	842	
Lake Superior State University	499	439	409	461	432	
Marist College	1,174	1,098	1,149	1,127	1,209	
Northern Michigan University	1,745	1,638	1,665	1,595	1,482	
Shippensburg University of Pennsylvania	1,752	1,485	1,522	1,484	1,391	
The College at Brockport	1,050	1,085	1,080	1,090	1,146	
Trinity University (San Antonio, TX)	636	596	534	655	602	
Union College (Schenectady, NY)	572	591	559	570	568	
University of South Dakota	1,248	1,353	1,342	1,247	1,287	
University of Wisconsin - Green Bay	910	921	809	770	789	

UIS Fall 2017 first-time freshmen: 278

Data Source: IPEDS Data Center. Includes on- and off-campus enrollments.

# Percent of Undergraduate Students from Underrepresented\* Groups Fall 2011 – Fall 2017

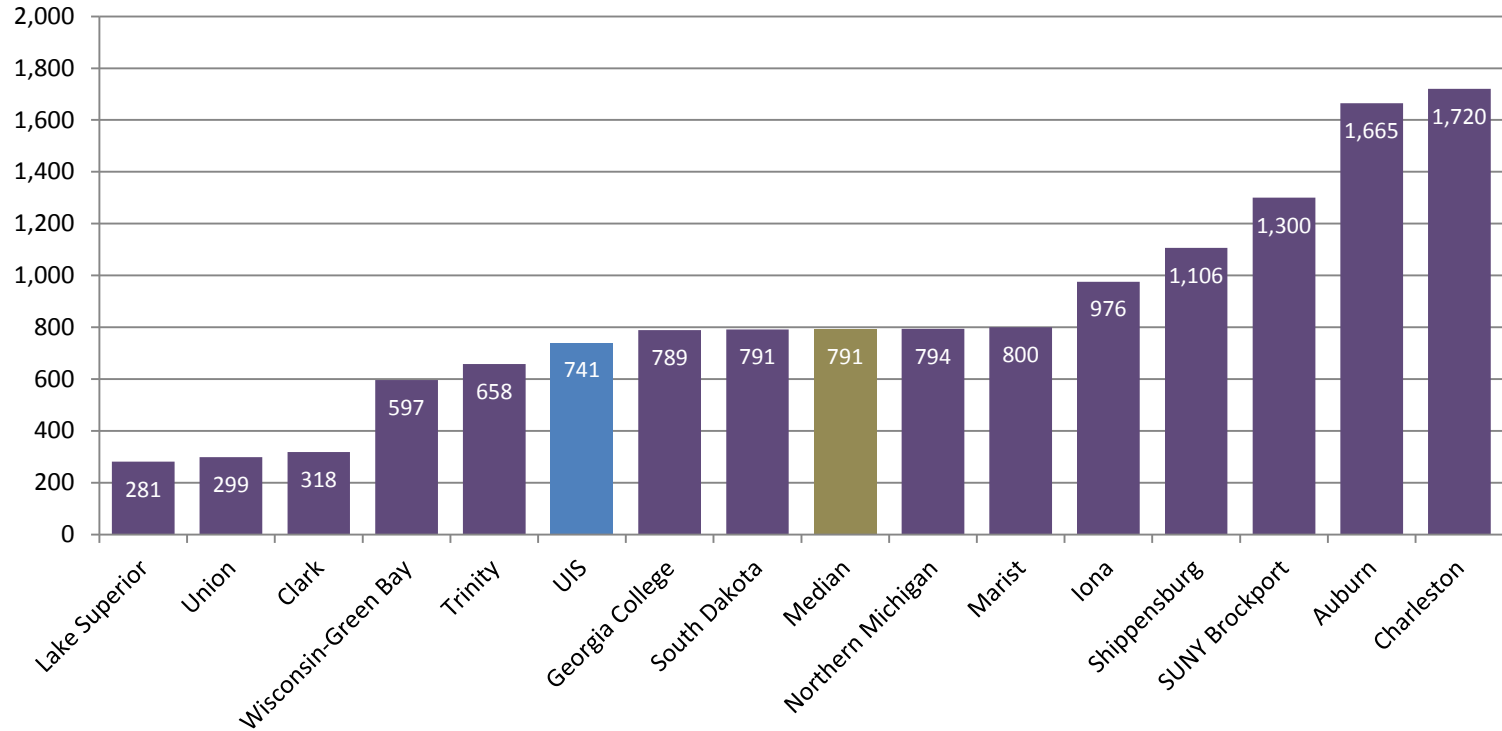


The percent of undergraduate students from underrepresented groups at the University of Illinois at Springfield is higher than the peer median.

UIS Fall 2017  
underrepresented  
undergraduates: 26%

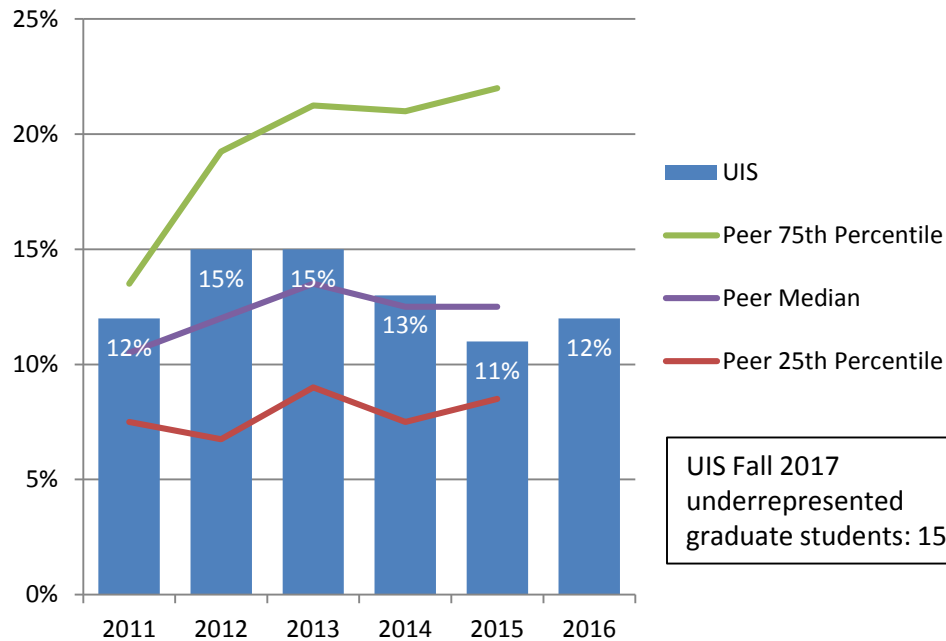
\* Includes Black, Hispanic, American Indian, Native Hawaiian/Other Pacific Islander, and multi-racial students.

# Number of Undergraduate Students from Underrepresented\* Groups Fall 2015



\* Includes Black, Hispanic, American Indian, Native Hawaiian/Other Pacific Islander, and multi-racial students.

# Percent of Graduate and Professional Students from Underrepresented\* Groups Fall 2011 – Fall 2017



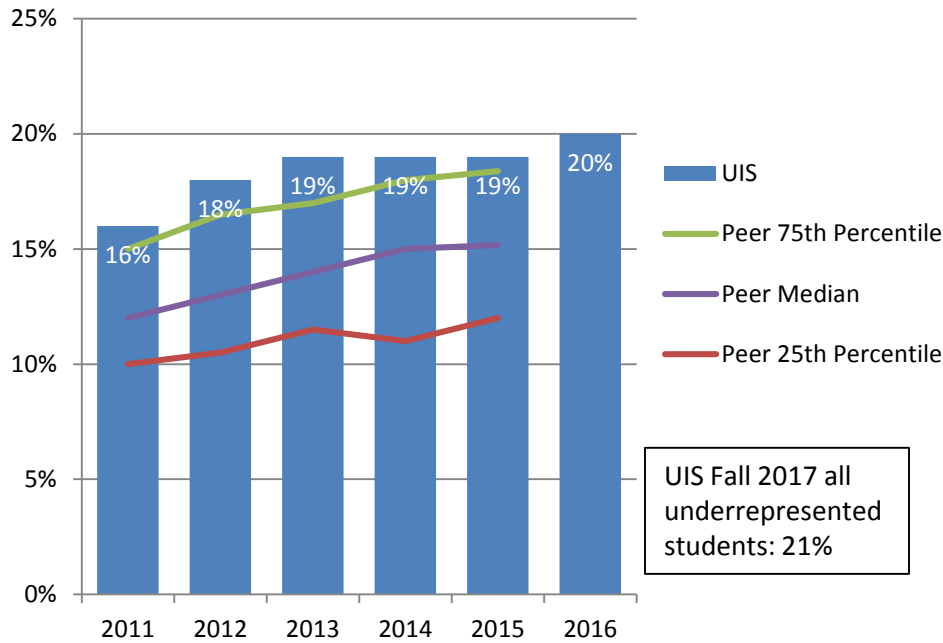
In Fall 2015, the percent of graduate students from underrepresented groups at the University of Illinois at Springfield is lower than its peer median.

UIS Fall 2017  
underrepresented  
graduate students: 15%

\* Includes Black, Hispanic, American Indian, Native Hawaiian/Other Pacific Islander, and multi-racial students.



# Percent of All Students from Underrepresented\* Groups Fall 2011 – Fall 2017



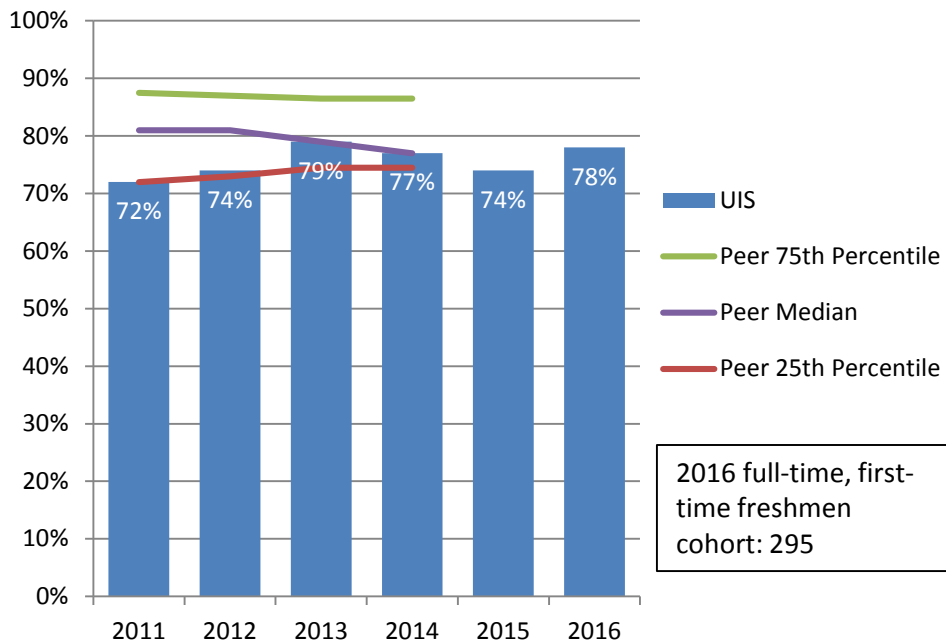
The percent of total students from underrepresented groups at the University of Illinois at Springfield has been consistently higher than its peer median.

\* Includes Black, Hispanic, American Indian, Native Hawaiian/Other Pacific Islander, and multi-racial students.

# Graduation and Retention Rates

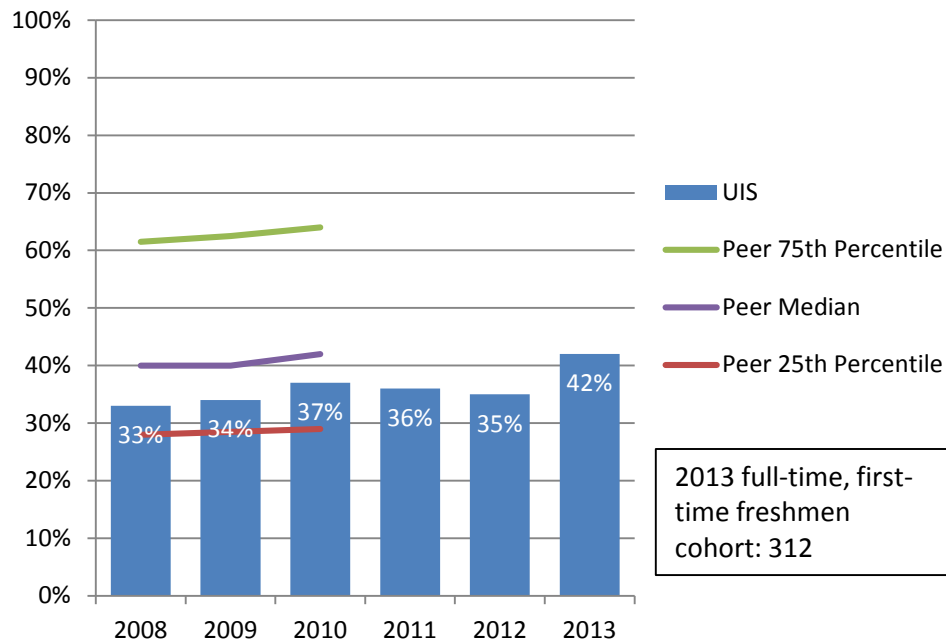


# Freshman to Sophomore One-Year Retention Rates 2011 – 2016 Cohorts



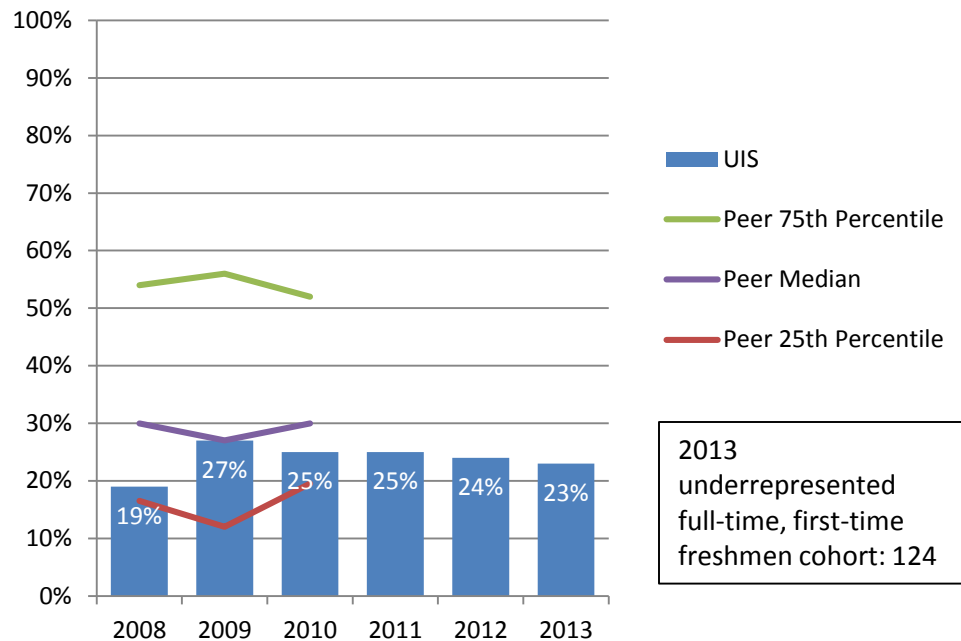
The freshmen retention rate at University of Illinois at Springfield is on par with the peer median.

# First-Time Freshmen Four-Year Graduation Rates 2008 – 2013 Cohorts



University of Illinois at Springfield graduates a lower percent of undergraduate students within four years compared to its peer median.

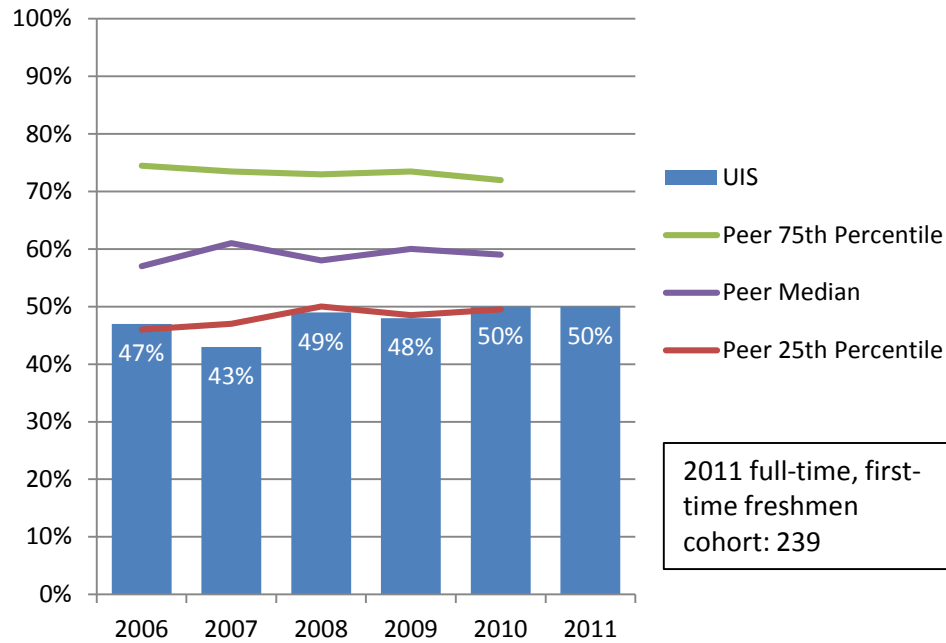
# Percent First-Time Freshmen from Underrepresented\* Groups Four-Year Graduation Rates 2008 – 2013 Cohorts



Compared to the peer median, the University of Illinois at Springfield graduates a lower percent of students from underrepresented groups within four years.

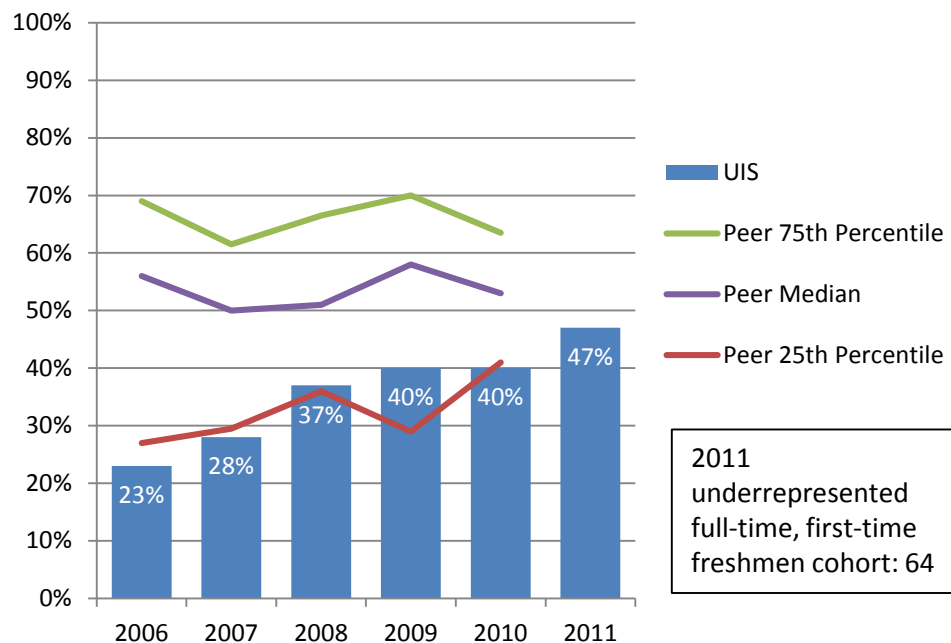
\* Includes Black, Hispanic, American Indian, Native Hawaiian/Other Pacific Islander, and multi-racial students.

# First-Time Freshmen Six-Year Graduation Rates 2006 – 2011 Cohorts



University of Illinois at Springfield graduates a lower percent of students within six years compared to its peer median.

# Percent First-Time Freshmen from Underrepresented\* Groups Six-Year Graduation Rates 2006 – 2011 Cohorts



Compared to the peer median, the University of Illinois at Springfield graduates a lower percent of students from underrepresented groups within six years.

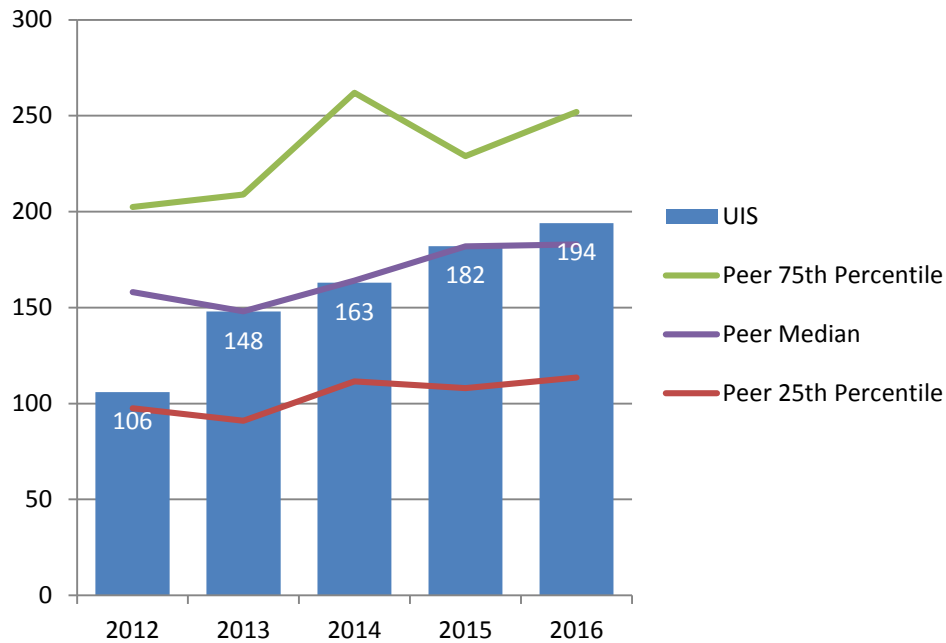
\* Includes Black, Hispanic, American Indian, Native Hawaiian/Other Pacific Islander, and multi-racial students.

# Degrees Awarded





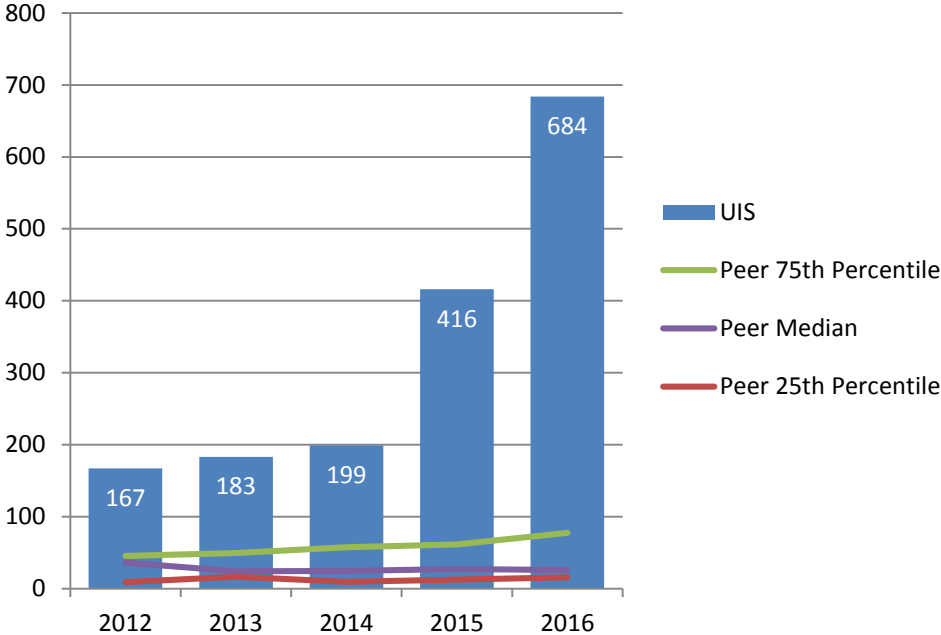
# Number of Bachelor Degrees Granted in STEM\* Fields FY 2012 – FY 2016



In FY 2016, University of Illinois at Springfield granted more undergraduate degrees in STEM fields than its peer median.

\* Science, Technology, Engineering, and Mathematics.

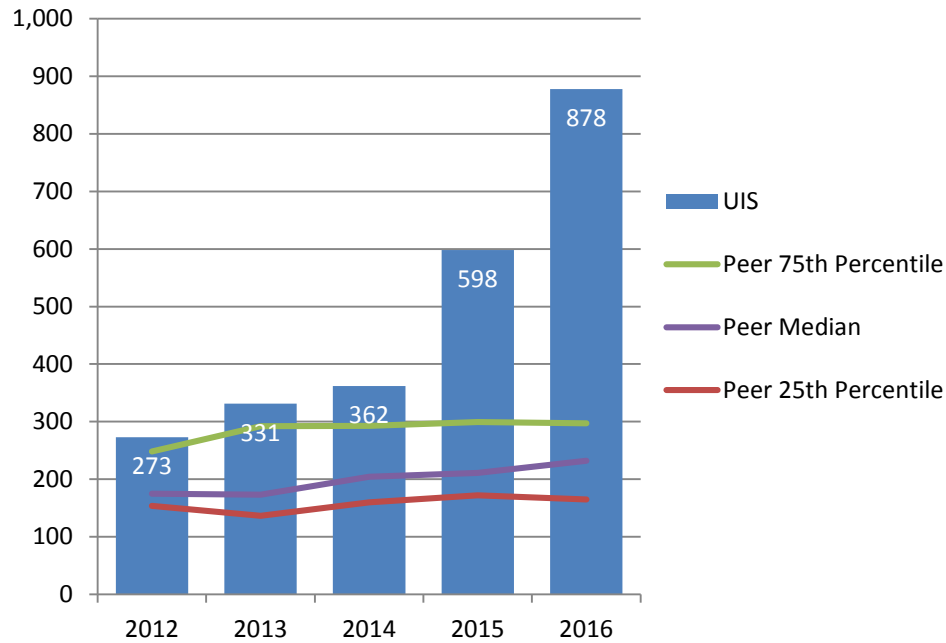
# Number of Master and Doctoral Degrees Granted in STEM\* Fields FY 2012 – FY 2016



University of Illinois at Springfield grants more graduate degrees in STEM fields than its peer median.

\* Science, Technology, Engineering, and Mathematics.

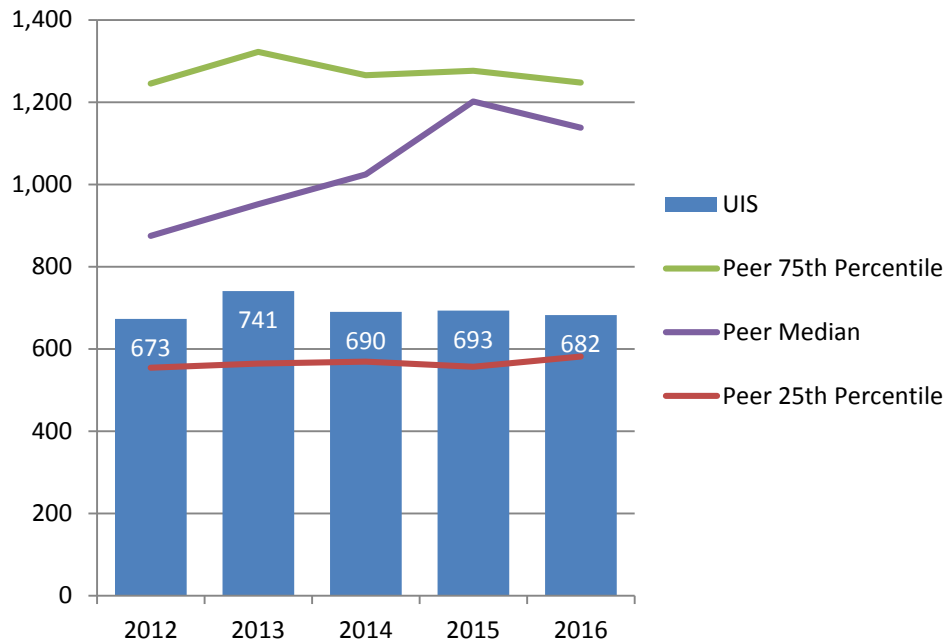
# Number of Total Degrees Granted in STEM\* Fields FY 2012 – FY 2016



In total, the University of Illinois at Springfield grants more degrees in STEM fields than its peer median.

\* Science, Technology, Engineering, and Mathematics.

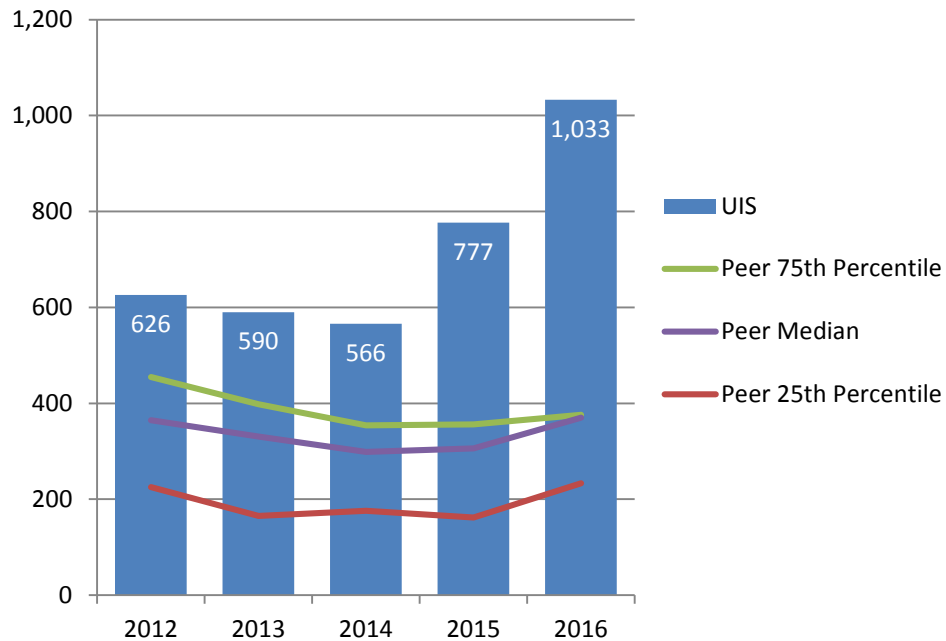
# Number of Bachelor Degrees Granted FY 2012 – FY 2016



University of Illinois at Springfield grants fewer undergraduate degrees than its peer median.

Note: Only includes bachelor degrees, excludes associate degrees and certificates. Degrees awarded from July 1 to June 30 of each fiscal year.

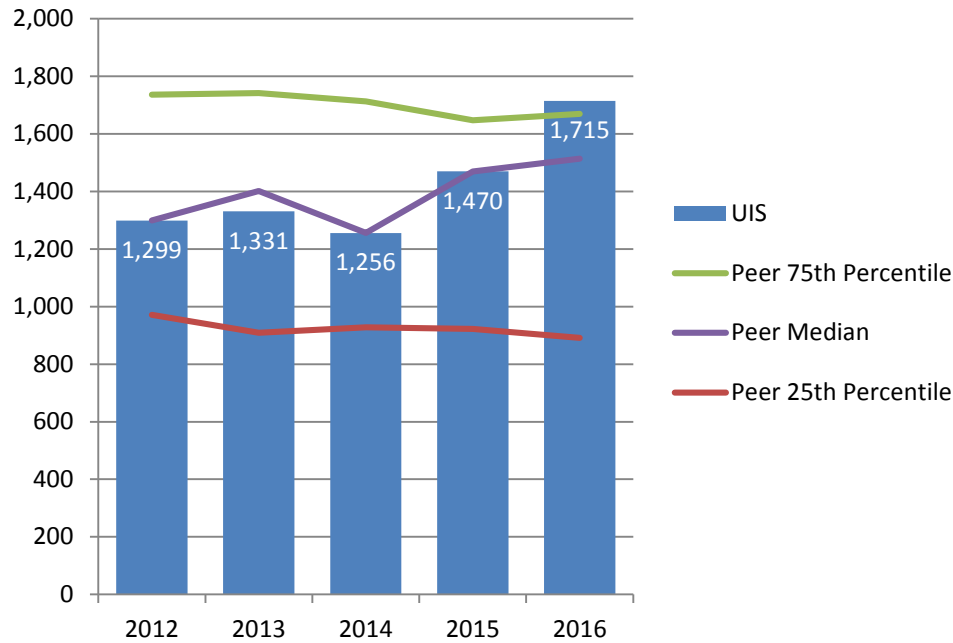
# Number of Graduate and Professional Degrees Granted FY 2012 – FY 2016



University of Illinois at Springfield grants more graduate degrees than its peer median.

Note: Only includes master, doctoral, and professional degrees; excludes certificates. Degrees awarded from July 1 to June 30 of each fiscal year.

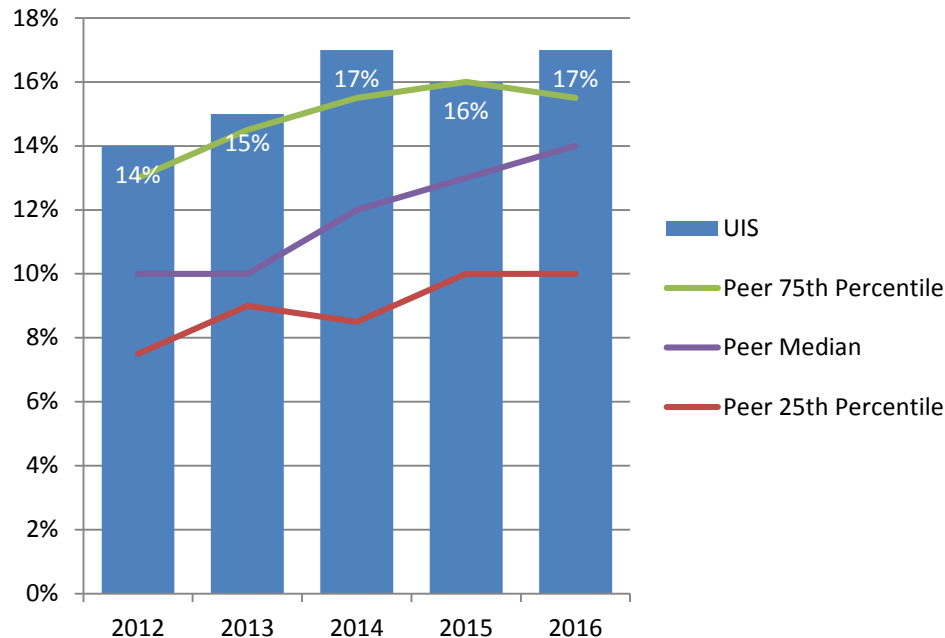
# Number of Total Degrees Granted FY 2012 – FY 2016



In FY 2016, the University of Illinois at Springfield granted more total degrees than its peer median.

Note: Only includes bachelor, master, doctoral, and professional degrees; excludes associate degrees and certificates. Degrees awarded from July 1 to June 30 of each fiscal year.

# Percent Bachelor Degrees Granted to Students from Underrepresented\* Groups FY 2012 – FY 2016

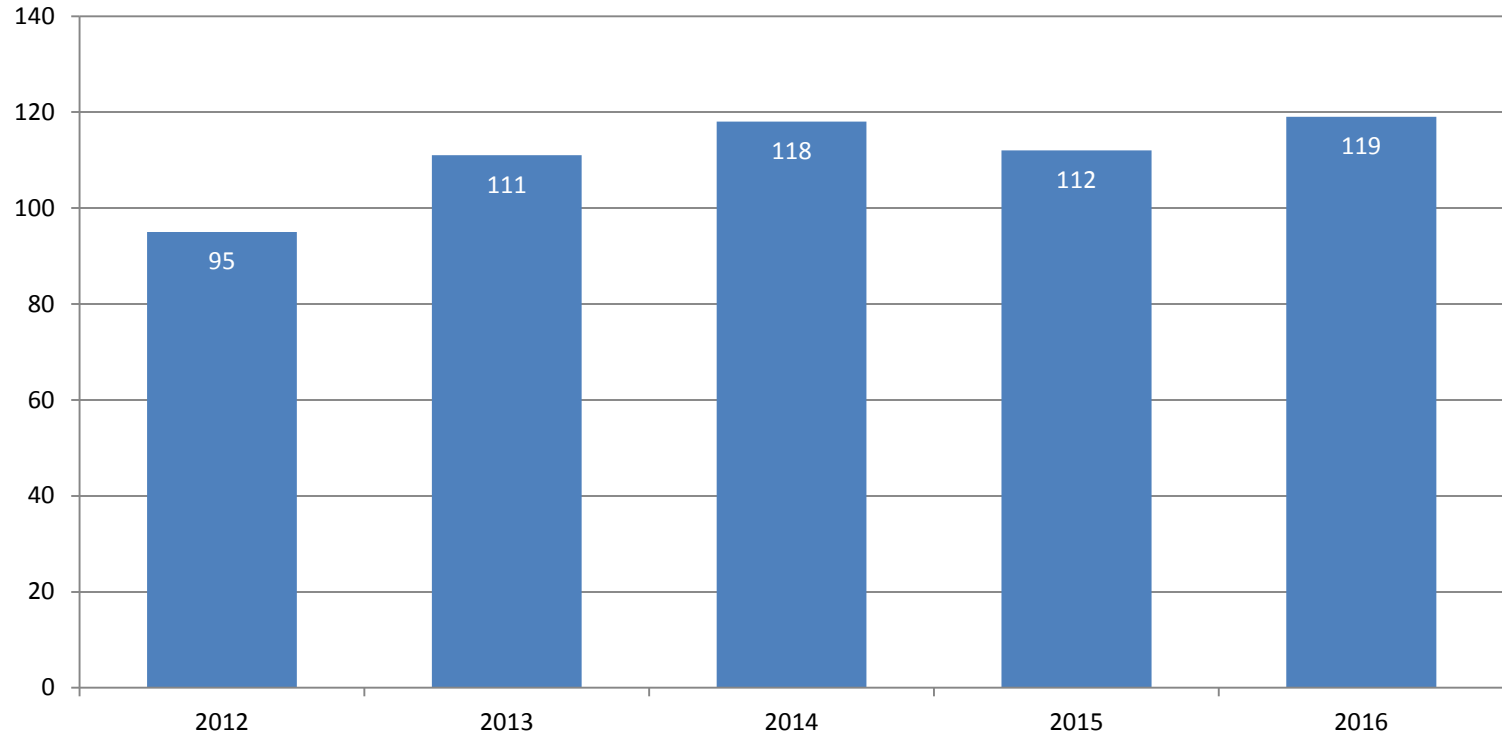


The percent of undergraduate degrees awarded to students from underrepresented groups at the University of Illinois at Springfield is higher than its peer median.

\* Includes Black, Hispanic, American Indian, Native Hawaiian/Other Pacific Islander, and multi-racial students.

Note: Only includes bachelor degrees, excludes associate degrees and certificates. Degrees awarded from July 1 to June 30 of each fiscal year.

# Number of Bachelor Degrees Granted to Students from Underrepresented\* Groups FY 2012 – FY 2016

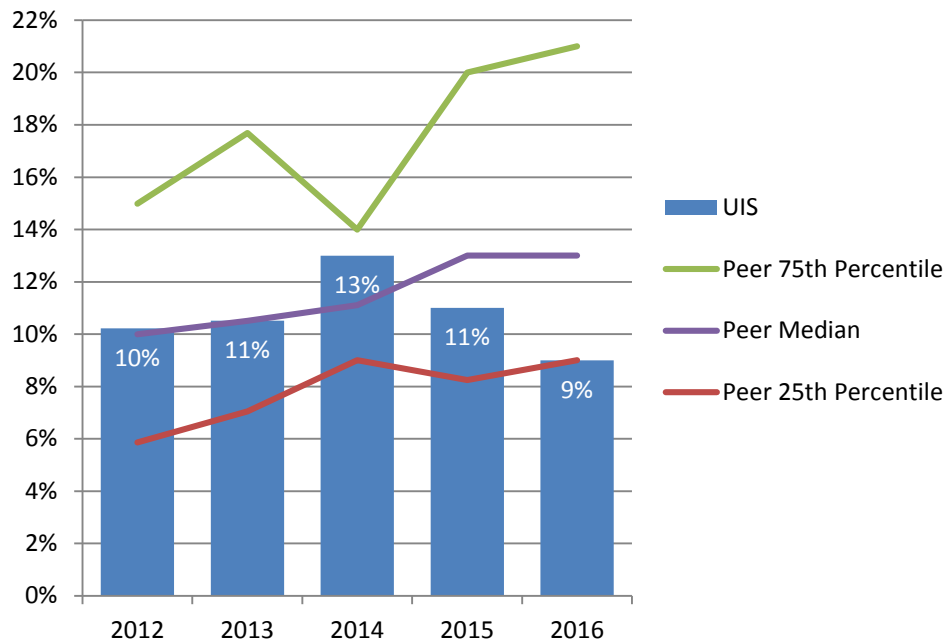


\* Includes Black, Hispanic, American Indian, Native Hawaiian/Other Pacific Islander, and multi-racial students.

Note: Only includes bachelor degrees, excludes associate degrees and certificates. Degrees awarded from July 1 to June 30 of each fiscal year.



## Percent Graduate and Professional Degrees Granted to Students from Underrepresented\* Groups FY 2012 – FY 2016

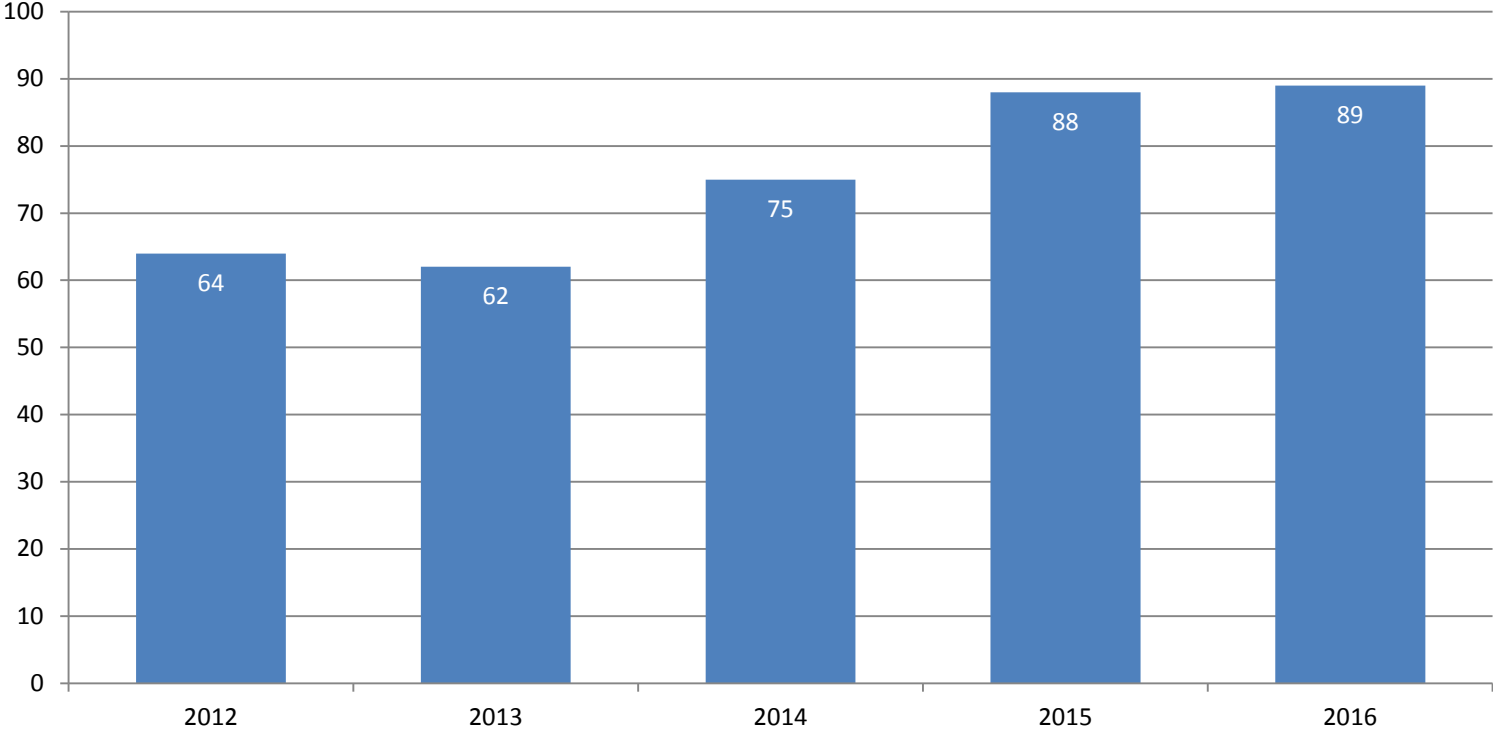


Since FY 2015, the percent of graduate degrees awarded to students from underrepresented groups at the University of Illinois at Springfield is lower than its peer median.

\* Includes Black, Hispanic, American Indian, Native Hawaiian/Other Pacific Islander, and multi-racial students.

Note: Only includes master, doctoral, and professional degrees; excludes certificates. Degrees awarded from July 1 to June 30 of each fiscal year.

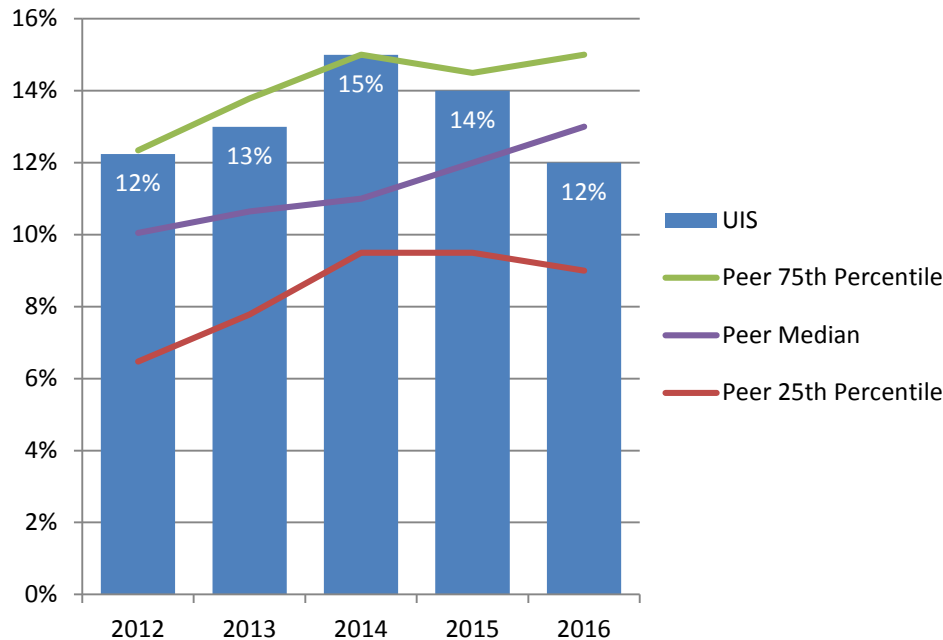
# Number of Graduate and Professional Degrees Granted to Students from Underrepresented\* Groups FY 2012 – FY 2016



\* Includes Black, Hispanic, American Indian, Native Hawaiian/Other Pacific Islander, and multi-racial students.

Note: Only includes master, doctoral, and professional degrees; excludes certificates. Degrees awarded from July 1 to June 30 of each fiscal year.

# Percent Total Degrees Granted to Students from Underrepresented\* Groups FY 2012 – FY 2016

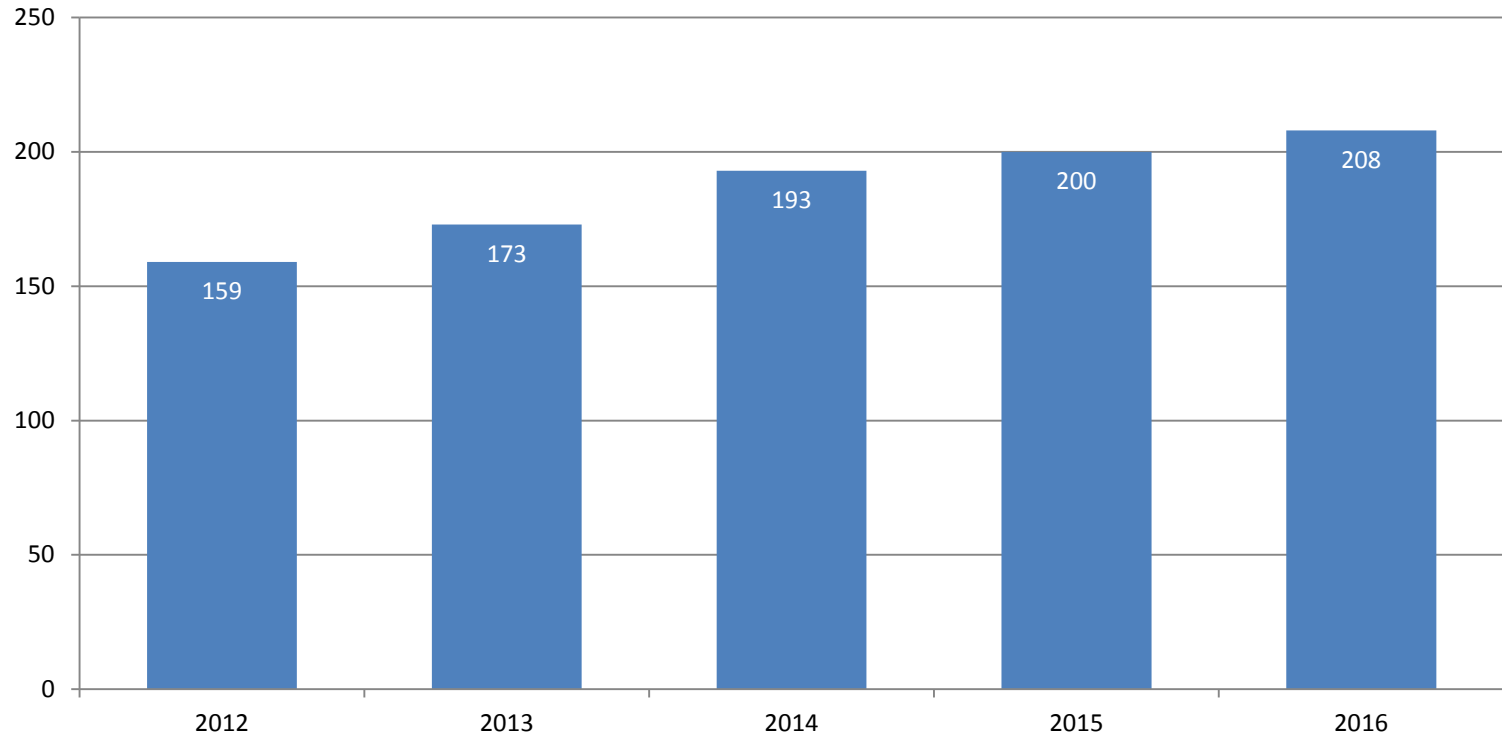


In FY 2016, the percent of all degrees awarded to students from underrepresented groups at the University of Illinois is lower than its peer median.

\* Includes Black, Hispanic, American Indian, Native Hawaiian/Other Pacific Islander, and multi-racial students.

Note: Only includes bachelor, master, doctoral, and professional degrees; excludes associate degrees and certificates. Degrees awarded from July 1 to June 30 of each fiscal year.

# Number of Total Degrees Granted to Students from Underrepresented\* Groups FY 2012 – FY 2016



\* Includes Black, Hispanic, American Indian, Native Hawaiian/Other Pacific Islander, and multi-racial students.

Note: Only includes bachelor, master, doctoral, and professional degrees; excludes associate degrees and certificates. Degrees awarded from July 1 to June 30 of each fiscal year.

# University of Illinois at Springfield

## Performance Metrics Analysis

ENROLLMENTS, GRADUATION AND RETENTION RATES,  
AND DEGREES AWARDED UPDATES:

SUBMITTED BY:  
CHANCELLOR SUSAN J. KOCH  
NOVEMBER 16, 2017

# Areas Meeting or Exceeding Expectations

- Record number of first-year freshman applications
- Diversity of student body
- Number of new Hispanic/Latino/Latina students increased
- Undergraduate and graduate STEM degrees
- Undergraduate degrees granted to students from underrepresented groups

# Accomplishments

- Percent of bachelor's degrees awarded to students in underrepresented groups is higher than peer median
- Number of bachelor's degrees granted in STEM fields higher than peer median
- Number of graduate and professional degrees well above peer median
- Number of graduate degrees granted in STEM fields is higher than peer median
- New academic programs added
- Student Union near completion

# Areas Needing Improvement

- Enrollment
- Freshman retention rate
- Graduation rates



# Strategy to improve **enrollment**

- **Actions:**
  - Increase number of academic programs in high-demand areas
  - Continue to implement innovative online programs
  - Enhance competitive marketing strategies to increase institutional visibility
  - Additional Admissions staff added to target strategic Illinois regions
  - Completion of Student Union
  - Create Campus Welcome Center

# Strategy to improve **freshman retention rates**

- **Actions:**
  - Focus on recruiting highly qualified freshmen
  - Make retention an institution-wide priority
  - Promote programs offered through Center for Academic Success
  - Continued programming via residential Living/Learning communities
  - Additional communications to admitted students to highlight academic support services

# Strategy to improve **graduation rates**

- **Actions:**
  - Increase availability of need-based financial aid
  - Scholarships a top priority of the new capital campaign
  - Develop and implement Sophomore Experience Program
  - Enhance staffing for academic support of student athletes

# Areas we are watching

- Size of freshman class
- Transfer enrollment
- Tuition and fees compared to other public universities in Illinois
- Student debt
- Retention and graduation rates